

by Dutchmen

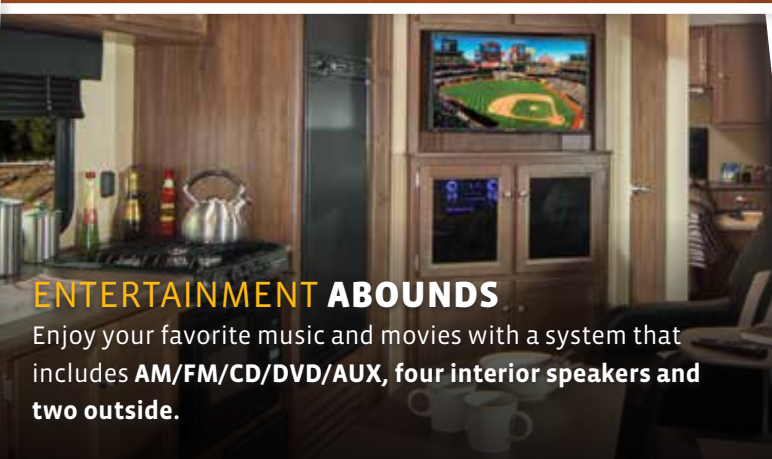
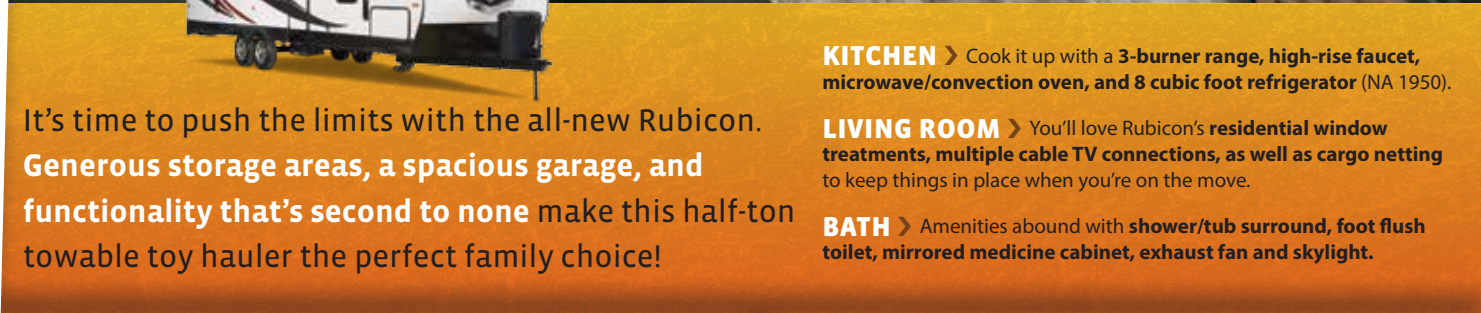
RUBICON

# RUBICON

Your Imagination is Your Only Limit.







Rubicon 2500 | Slate

### FUNCTIONAL FEATURES

- › HappiJac Bunk Bed System with roll over sofa and ladder for top bunk. (N/A 1905 & 2100)
- › Steel reinforced garage floor with flush floor loading zone. (No wheel wells!)
- › 17-foot loading area with cargo lamp lights. (2600)
- › 7-foot insulated bottom-hinged, spring assisted ramp door.

### ← 102" Wide Body Design →



**KITCHEN** › Cook it up with a 3-burner range, high-rise faucet, microwave/convection oven, and 8 cubic foot refrigerator (NA 1950).

**LIVING ROOM** › You'll love Rubicon's residential window treatments, multiple cable TV connections, as well as cargo netting to keep things in place when you're on the move.

**BATH** › Amenities abound with shower/tub surround, foot flush toilet, mirrored medicine cabinet, exhaust fan and skylight.

It's time to push the limits with the all-new Rubicon. Generous storage areas, a spacious garage, and functionality that's second to none make this half-ton towable toy hauler the perfect family choice!

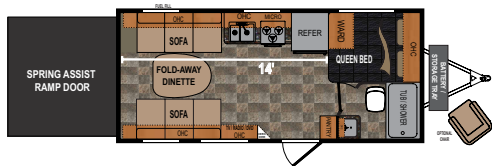
### ENTERTAINMENT ABOUNDS

Enjoy your favorite music and movies with a system that includes AM/FM/CD/DVD/AUX, four interior speakers and two outside.

### RELAX IN COMFORT

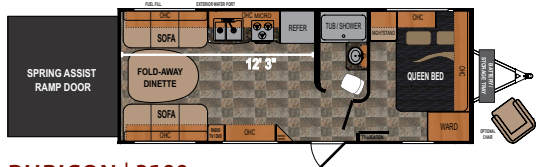
Rest easy on the queen bed, read a book lighted by the convenient overhead lights, and store all you need in the spacious hardwood cabinets.





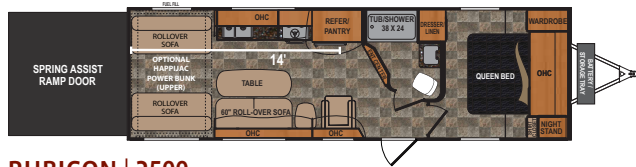
### RUBICON | 1905

Ext. Length: **24' 8"** Ext. Height: **11' 8"** Awning: **16'**  
Average Shipping Weight: **5,650** Sleeps: **4**



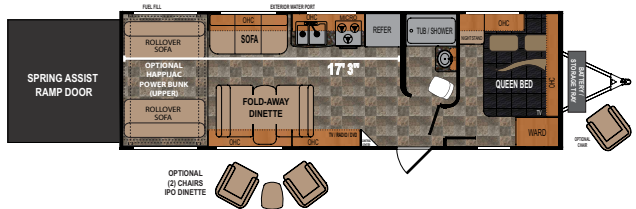
### RUBICON | 2100

Ext. Length: **26' 1"** Ext. Height: **12' 1"** Awning: **18'**  
Average Shipping Weight: **6,522** Sleeps: **4**



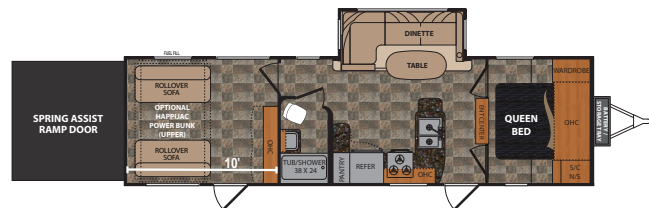
### RUBICON | 2500

Ext. Length: **31' 6"** Ext. Height: **11' 11"** Awning: **18'**  
Average Shipping Weight: **7,623** Sleeps: **6**



### RUBICON | 2600

Ext. Length: **31' 1"** Ext. Height: **12' 1"** Awning: **18'**  
Average Shipping Weight: **7,598** Sleeps: **7**



### RUBICON | 2900

Ext. Length: **34' 8"** Ext. Height: **12' 3"** Awning: **20'**  
Average Shipping Weight: **9,113** Sleeps: **7**

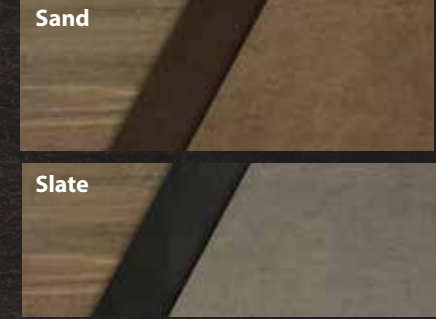
## SPECIFICATIONS

FLOORPLAN	DIMENSIONS			WEIGHTS (LBS.)			TANKS (GALS.)		
	LENGTH	EXTERIOR WIDTH	HEIGHT (WITH A/C)	**AVERAGE SHIPPING WEIGHT	DRY HITCH WEIGHT	CARGO CARRYING CAPACITY	***FRESH WATER CAPACITY	GREY WATER CAPACITY	BLACK WATER CAPACITY
1905	24' 8"	102"	11' 8"	5,650	791	3,350	82	42	42
2100	26' 1"	102"	12' 1"	6,522	913	2,978	92	42	42
2500	31' 6"	102"	11' 11"	7,623	1,145	3,377	82	42	42
2600	31' 1"	102"	12' 1"	7,598	1,064	3,402	92	42	42
2900	34' 8"	102"	12' 3"	9,113	1,549	2,887	92	42	42

\*Length is defined as the distance from the centerline of hitch pin/coupler to rear bumper of trailer. \*\*Our weights represent how most units are built, inclusive of many commonly-ordered options. \*\*\*Fresh water capacity includes water heater capacity.

**DISCLAIMER:** Product information is as accurate as possible as of the date of publication of this brochure. All features, floorplans, and specifications in this brochure are subject to change without notice. Please also consult Dutchmen's website at [www.Dutchmen.com](http://www.Dutchmen.com) for more current product information and specifications. **Tow Vehicle Disclaimer. CAUTION:** Owners of Dutchmen recreational vehicles are solely responsible for the selection and proper use of tow vehicles. All customers should consult with a motor vehicle manufacturer or their dealer concerning the purchase and use of suitable tow vehicles for Dutchmen products. Dutchmen disclaims any liability or damages suffered as a result of the selection, operation, use or misuse of a tow vehicle. DUTCHMEN'S LIMITED WARRANTY DOES NOT COVER DAMAGE TO THE RECREATIONAL VEHICLE OR THE TOW VEHICLE AS A RESULT OF THE SELECTION, OPERATION, USE OR MISUSE OF THE TOW VEHICLE. REFERENCE DUTCHMEN MANUFACTURING OWNERS MANUAL FOR LIMITED WARRANTY DETAILS.

## DÉCOR



## STANDARDS AND OPTIONS

### EXTERIOR

- 2" Quick Release Dump Valve on Fresh Water Tank
- Black Trim Windows w/ Tinted Safety Glass
- Cargo Ramp Loading Lights
- Diamond Plate Rock Guard
- Dual Battery Tray
- Front Cargo/Generator Rack
- Keyed Ramp Door Latches
- Oversized Exterior Storage Compartments
- Radius Entry Door
- Rear Security/Work Lights
- Steel Loops on Chassis for Outside Security Lock
- Triple Entry Steps

### GARAGE

- 2,500 LB Tie Down Rings
- 7" Insulated Bottom Hinged Spring Assisted Ramp Door
- Dovetail Rear Entry
- Flat Floor Design - No Wheel Wells
- Metal Ram Air Vents

- Fuel Station w/12v Pump, 30 Gallon Fuel Tank and Static Line
- Tuff-Ply Gas/Oil Resistant Dovetail Flooring

### EQUIPMENT

- 30 AMP Service w/Power Cord
- (4) 12" Electric Brakes
- 55 AMP Converter
- 6 Gallon LP/Electric Water Heater w/DSI
- Black Tank Flush
- Dual 7.5 Gallon (30 LB each) LP Tanks w/ Cover
- Electric Power Awning w/Adjustable Legs
- Forced Air Furnace
- Front and Rear Stabilizer Jacks
- Heavy-Duty Axles
- Radial Tires
- Steel Wheels

### CONSTRUCTION

- 7/8" One-Piece Floor Decking (main floor)
- 1" Thick Insulated Baggage Doors
- 102" Wide Body
- 5" Trussed Roof
- I-Beam Chassis (8"-1905, 2100, 2600) (10" - 2900)
- Fiberglass Insulation in Roof, Floor & Walls
- Heated and Enclosed Water Tanks
- Steel Reinforced Garage Floor

### INTERIOR

- 12V Disconnect Switch
- 13,500 BTU Ducted AC (1905 non-ducted)
- 3-Burner Range
- 6 CU FT LP/Electric Refrigerator w/Black Front Panel
- Beauflor® Flooring
- Bottle Opener in Kitchen
- Cherry Shaker Style Cabinet Doors
- Custom Rubicon Fold-Away Furniture

- Directional Digital TV Antenna
- Fantastic Fan in Kitchen
- Foot Flush Toilet
- HappiJac Bunk Bed System w/ Roll Over Sofas & Ladder
- Hard Lambrequin Window Treatments
- Kitchen Sink Cover
- Laundry Chute in Bedroom (n/a 1905)
- LCD HDTV w/Outside Entertainment Bracket (19" - 1905, 2100) (24" - 2600) (32" - 2900)
- Metal Blinds
- Metal Drawer Guides
- Microwave/Convection Oven
- Mirrored Medicine Cabinet
- Multiple Cable TV Connections
- Puck Lighting above Cabinets
- Overhead Cargo Netting
- Oversized Tinted Safety Glass Windows
- Power Bathroom Exhaust Fan
- Residential Cabinet Hardware

- Rubicon Central Command Center
- Skylight over Shower/Tub
- Shower/Tub Surround
- Stereo w/AM/FM/CD/DVD/Player w/AUX, 4 Interior Speakers, 2 Exterior Marine Speakers
- Up to 17' of Cargo Space

### OPTIONS

- 15,000 BTU A/C Upgrade
- 2 Rubicon Logo Chairs IPO
- Sit-n-Sleep Dinette (2600)
- 8 CU FT Refrigerator Upgrade
- Aluminum Wheels (16" - 2900)
- Fiberglass Wall Upgrade
- Onan® 4.0 KW Generator w/Start/Stop Switch, Hour Meter & Fuel Gauge
- Rear Screen Wall
- Rubicon Logo Chair
- Spare Tire w/Carrier
- Speaker Upgrade w/ Powered Subwoofer



# YOUR IMAGINATION IS YOUR ONLY LIMIT



## Dutchmen—A North American Campground Classic

Few manufacturers have built RVs for 25+ years, and only one has set the standard for innovation AND value. Dutchmen **IS** “A North American Campground Classic.”



# MORE STANDARD FEATURES MORE VALUE

Dutchmen RVs turn more heads on the lot and in the campground than any other. Why? While other manufacturers offer features as options, Dutchmen tends to make those same features standard. Call it “bang for the buck”, “more for your money”, or simply “more value”. **We’ve built a reputation for bringing RV owners more standard features for less money** over the years . . . and it’s a reputation we plan to keep.

PO BOX 2000 • 2164 Caragana Court • Goshen, Indiana 46527 • Sales: 574.537.0600 • [www.dutchmen.com](http://www.dutchmen.com)

RUB-HP0315-20k

# 3000 STRONG NATION WIDE DEALER NETWORK

300 Dutchmen dealers across North America and the Industry Leading Service Center in Goshen, Indiana, combine for your peace of mind before, during, and after the sale. Rest assured that no matter where your travels take you, **the best-resourced RV manufacturing company in the world is behind you all the way.**

Scan this QR Code to  
**360 VIEW  
FLOORPLANS**  
of the Rubicon.



**[www.dutchmen.com](http://www.dutchmen.com)**

Visit us online to see all of the Dutchmen brands, innovative models and spacious floor plans.

**From giving advice to servicing products, we consider our loyal dealers the best resource for learning about Dutchmen products.**

Your local dealer

