

WARRANTY FOR  
FULL TIME RVING\*

\*REFERENCE KEYSTONE RV COMPANY OWNERS MANUAL FOR LIMITED WARRANTY DETAILS

Montana

LUXURY FIFTH WHEELS

# ENJOY

## WHAT YOU DESERVE



**Keystone RV  
Company**



# The ultimate ownership experience.

The goal of Keystone RV Company is to surprise and delight our owners at each and every touchpoint. We're happy when our campers are happy, and we are committed to providing the very best ownership experience in the industry.



**Keystone RV  
Company**

## 1 EASIER SHOPPING.

At Keystone, we make choosing an RV as easy as finding the Big Dipper on a dark summer night. With comprehensive online product information, Key Connect™ product advisors, and an unparalleled dealer network, we will help you select the perfect RV for your family's adventure.

## 2 INNOVATIVE THINKING.

The road's a nicer place when you have the industry's smartest features behind you. Keystone leads the pack in patented innovations that make our RVs safer, more comfortable, and easier to operate.

## 3 LONG HAUL QUALITY.

To keep you on the road, there are certain things we just won't build a Keystone RV without. Game-changing features like our Unified Wiring Standard, Tru-Fit™ five-point slide construction, and no-fail Tuf-Lok™ A/C duct joiners combined with exhaustive testing and inspections are some of the reasons why Keystone is able to offer our owners the industry's best 3-year limited structural warranty.

## 4 WORRY-FREE CUSTOMER SERVICE.

Wherever the road takes you, you're never too far from an authorized Keystone service center. We also offer live service assistance, ultra-fast parts shipping, online maintenance tips and tricks, and a single-point warranty claims policy. *That's* peace of mind.

## 5 KEYSTONE NATION.

When you choose Keystone, you become a part of one of the largest camping families in the country. We're Keystone Nation. A friendly community where people share photos, travel tips and amazing stories – all in the spirit of camaraderie and adventure. Come join us.

Experience the Montana lifestyle by visiting [#keystonemontana](#)





# Keystone EXCLUSIVE Innovations

Year after year, Keystone RV's experienced team delivers Built For the Long Haul quality you expect and exclusive innovations you won't find anywhere else.



## 3-year Limited Structural Warranty, 1-year Limited Base Warranty

Every new Keystone RV comes with the industry's best three-year limited structural warranty AND a one-year limited base warranty. Ask your dealer, visit [keystonerv.com](http://keystonerv.com), or call Keystone owner relations for details.



## 4G LTE and Wi-Fi Prep

All units are equipped with a new Furrion® antenna that integrates 4G LTE and Wi-Fi with standard VHF/UHF/AM/FM reception.



## KeyTV™

No more connection guesswork or poor reception. KeyTV offers a game-changing, single point of control of over-the-air, cable, and satellite feeds. Visit us online for more information.



## Color-Coded Wiring

Easy-to-trace circuits simplify electrical and entertainment system troubleshooting.



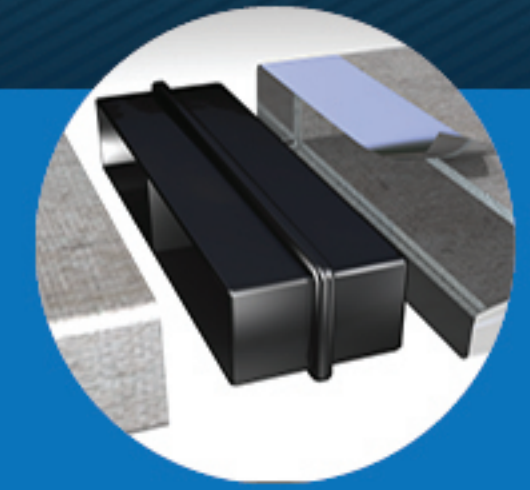
## Automotive-Grade Painted Fiberglass Cap

Six layers of stunning and resilient automotive-grade paint with Key-Shield™ paint technology.



## In-Floor Heating Ducts

Ducting allows for more airflow that distributes heat evenly for optimal comfort.



## Tuf-Lok™ A/C Duct Joiners

Crush resistant design securely joins ductwork and A/C units, and drastically reduces chilled-air leaks to boost cooling efficiency and comfort.



## Tru-Fit™ Slide Construction

A more durable slide room design that minimizes functional motor and structural stress, and resists leaking.



## WARRANTY FOR FULL TIME RVING\*

\*REFERENCE KEYSTONE RV COMPANY OWNERS MANUAL FOR LIMITED WARRANTY DETAILS

# MONTANA



MONTANA | LUXURY FIFTH WHEELS

## 20 years of building luxury.

There is a time in your life when you know your next RV will be a Keystone Montana. You're an experienced camper. You know the ropes. You have the freedom to spend more time on the road and you are ready to see more of the country. You are ready to join more than 100,000 owners who have chosen Montana for its spacious floorplans, exceptional craftsmanship, cutting-edge technology, and the confidence that comes from twenty years of building durable and dependable luxury fifth wheels.

You're ready. And we're thrilled to introduce you to Montana's 20th Anniversary product line-up.

For more information, please visit [keystonerv.com/montana](http://keystonerv.com/montana)





OVER 100K MONTANA FIFTH WHEELS  
ON THE ROAD TODAY



ONE OF THE MOST-AWARDED BRANDS IN THE INDUSTRY

20<sup>TH</sup> ANNIVERSARY EDITION

#1 SELLING LUXURY FIFTH WHEEL BRAND 18 YEARS IN A ROW.





more product detail at  
[www.keystonerv.com/montana](http://www.keystonerv.com/montana)

# Montana Legacy Package

Take your Montana to the next level with these premium upgrades



### E/H Disc Braking

Add the ultimate in safety and stopping power to your Montana with the proven performance of electric over hydraulic disk brakes.



### Generator Prep

Fully integrated wiring and controls to help you to get off the grid and give you more campsite options.



CONTROL • SYSTEMS MONITORING • SAFETY

### iN-Command™ Generation 3 w/ Global Connect

Total control over power, slide rooms, awnings and more from a convenient master control panel as well as your smartphone.



### Surge Protection

Protects electronics without the need for additional equipment.



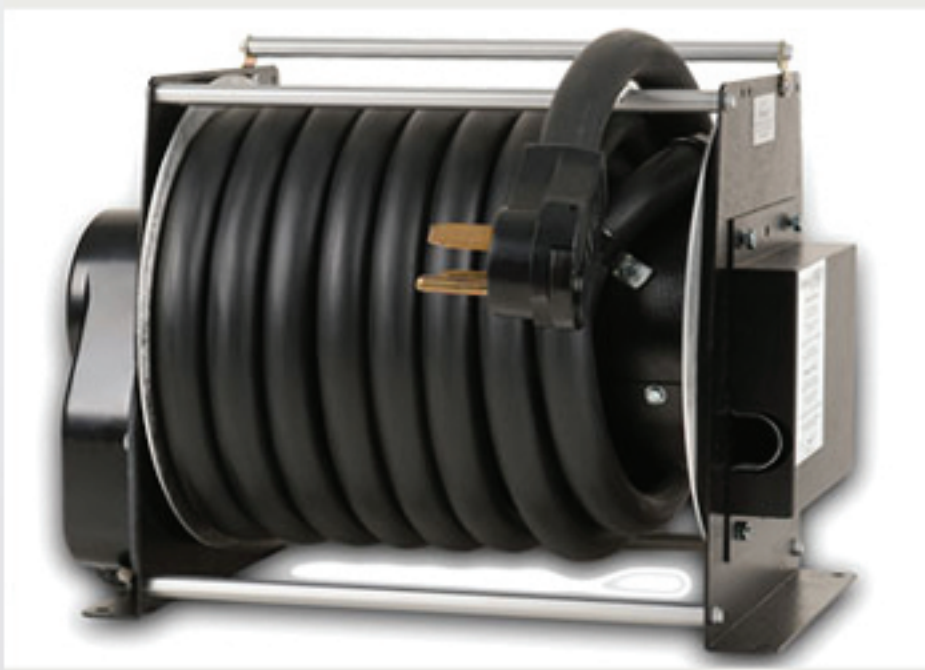
### Furrion® Vision S™ Observation System

Side and rear-view cameras for ultimate safety and peace-of-mind when changing lanes, merging, and making wide turns.



### Hardwood Cabinet Framing (Stiles)

Sturdier construction and consistent finish.



### Electric Power Cord Reel (N/A in 3130RE)

Quick and tidy storage for your power cord.



### Rear Fiberglass Cap

(N/A 3700, 3701, 3740, 3741, 3760, 3761, 3790, 3791)  
One-piece cap completely seals the roof, wall and floor.



Take to the road  
in total luxury





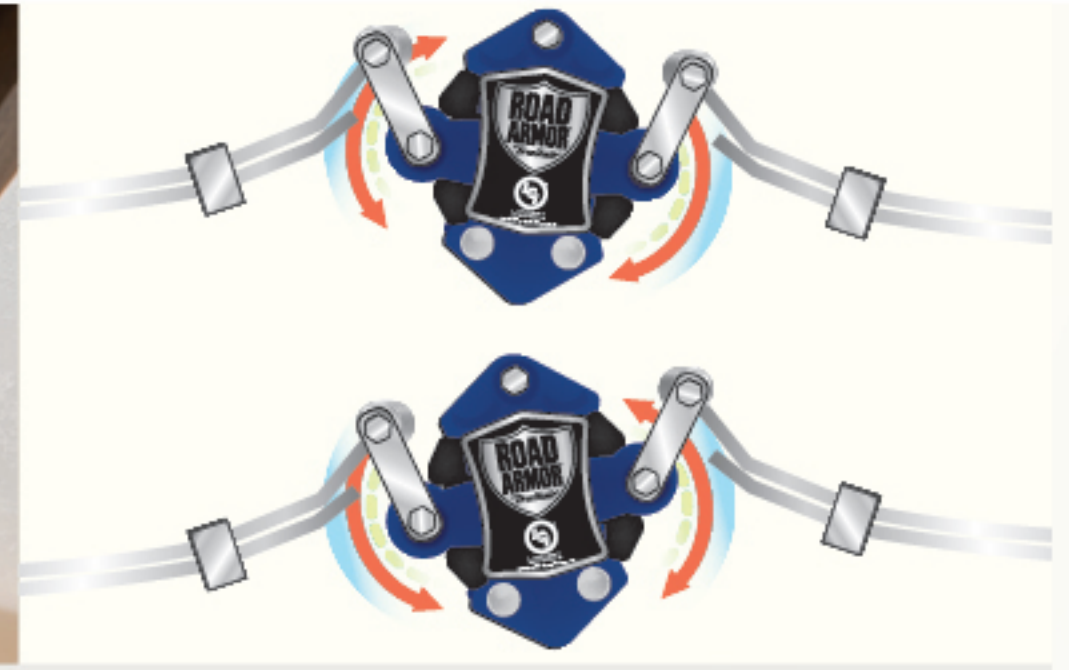
### Super-Brite Taillights

Full exterior LED light package provides ultimate visibility of your RV.



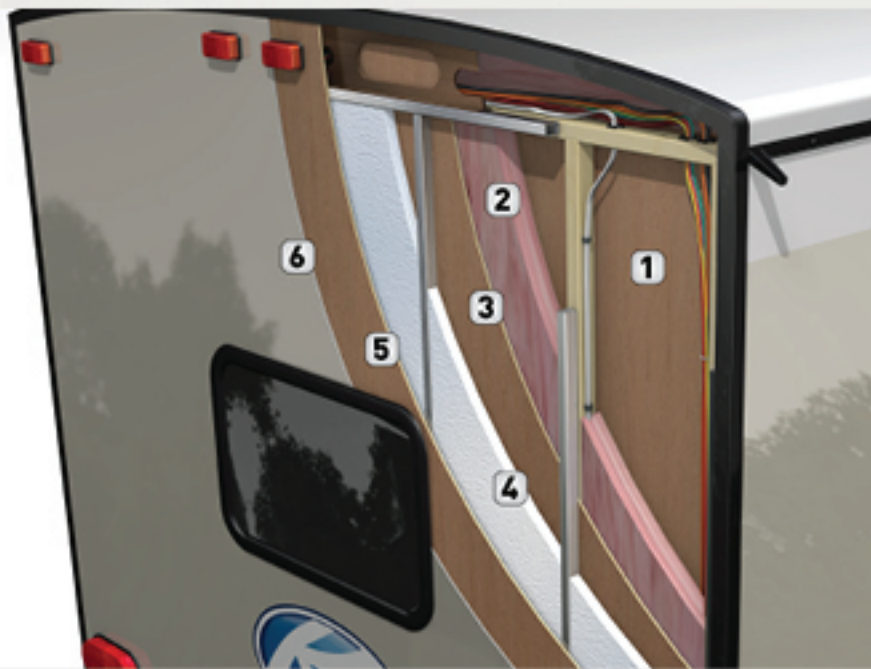
### Pivot Hinge Door

Innovative hinge design increases usable bathroom space.



### EXCLUSIVE Road Armor™ Suspension W/ 360° Vibration Control

Equalizes axle load to dampen shock and vibration.



### Double-Insulated Laminated Rear Wall (Non Legacy)

A Montana EXCLUSIVE and the best insulated rear wall in the industry.



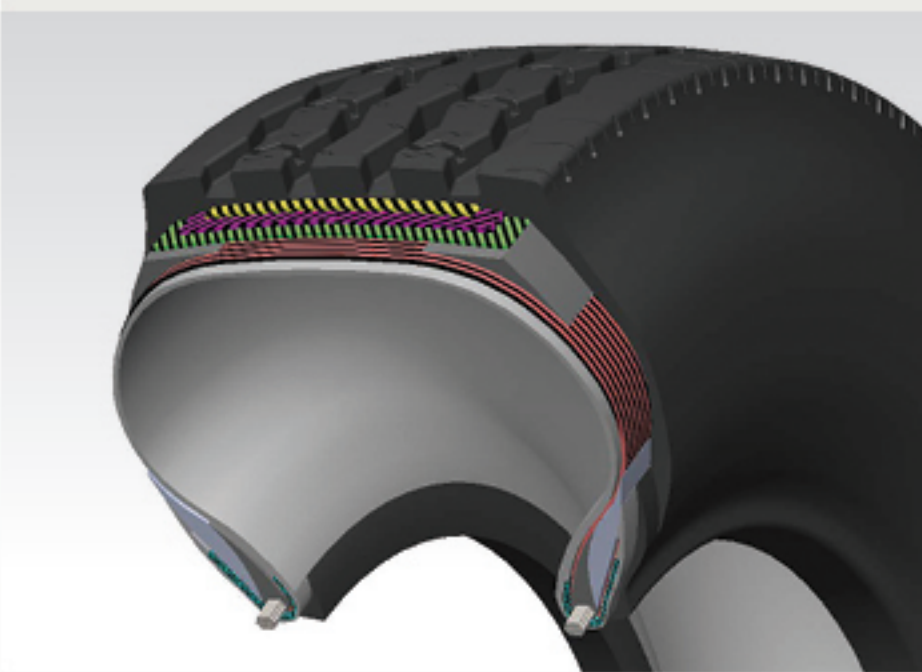
### LED Accent Lighting

Creates a modern soft wash of light beneath kitchen countertops.



### Laundry Hamper (Most Models)

Conveniently stores dirty clothes out of sight.



### Sailun G-Rated Tires W/ 6-Year Warranty

Premium higher ply tires safely allow higher driving speeds and carrying capacity.



### EXCLUSIVE Dometic® PowerChannel Awning

This innovative awning provides reliable shade and as convenient access to electrical power across the length of the roller tube.



### Easy Sweep Resilient Flooring

Keep your RV tidy with durable vinyl flooring in the bedroom.



### Indoor/Outdoor Central Vacuum

Clean up your coach in a snap with this convenient tool.



### Dinette Chair Buddy™

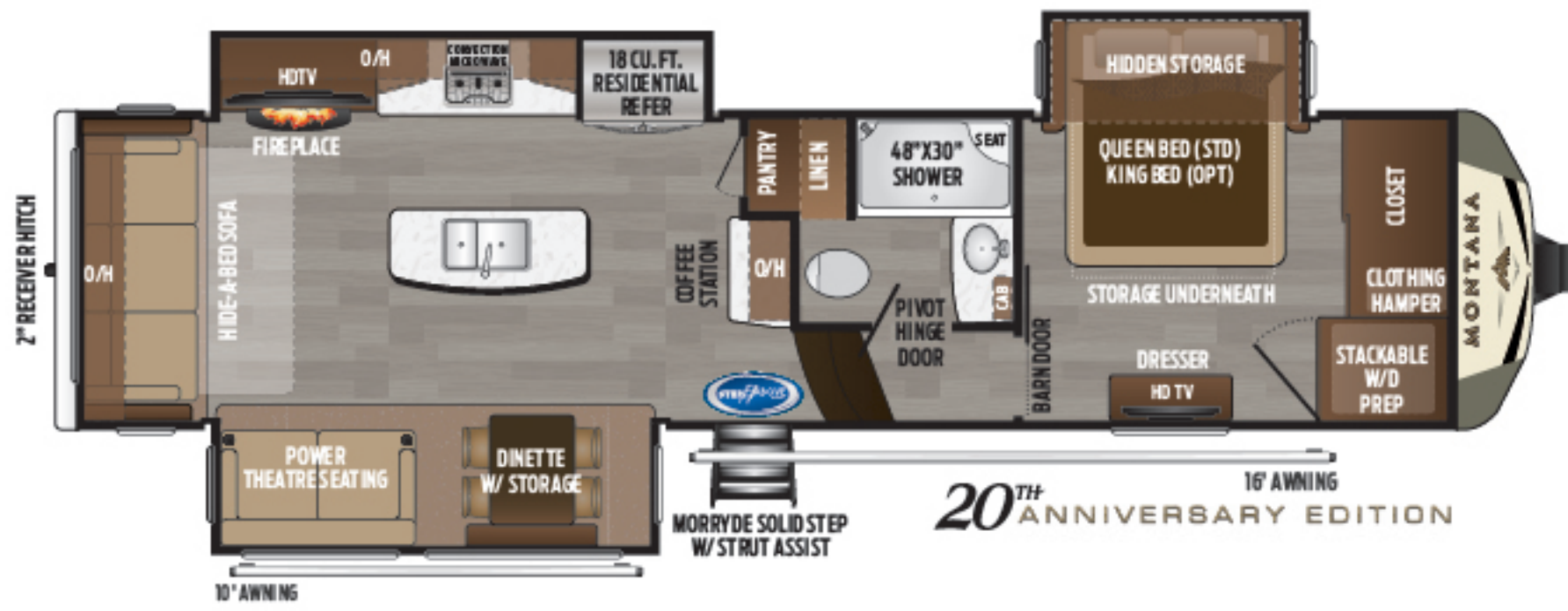
Safely and easily secures chairs in transit.



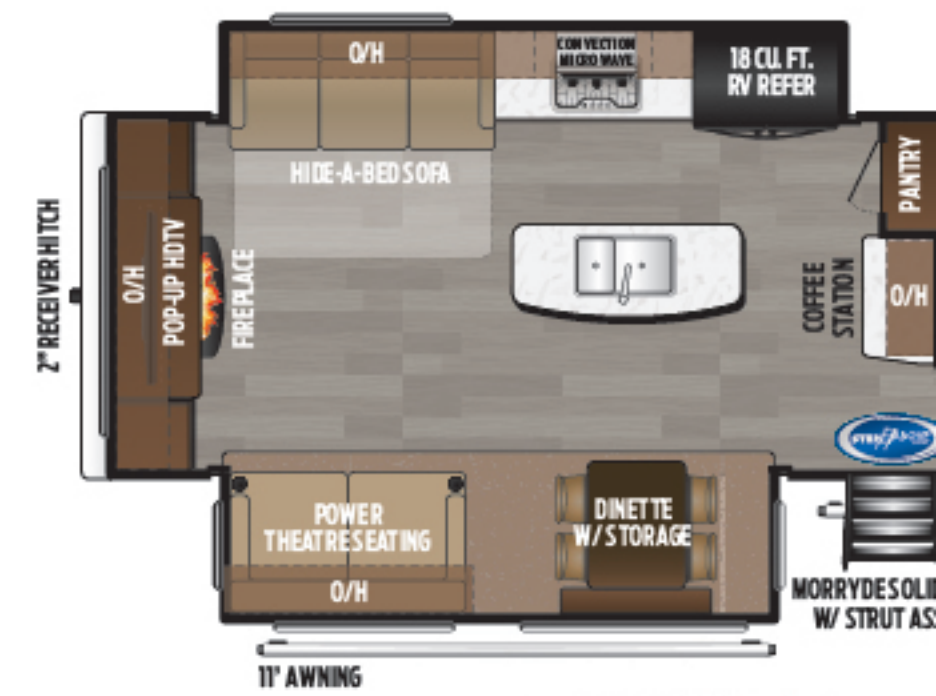
### Four Season Camping

Water lines and tanks protected to keep you camping down to 0°F.

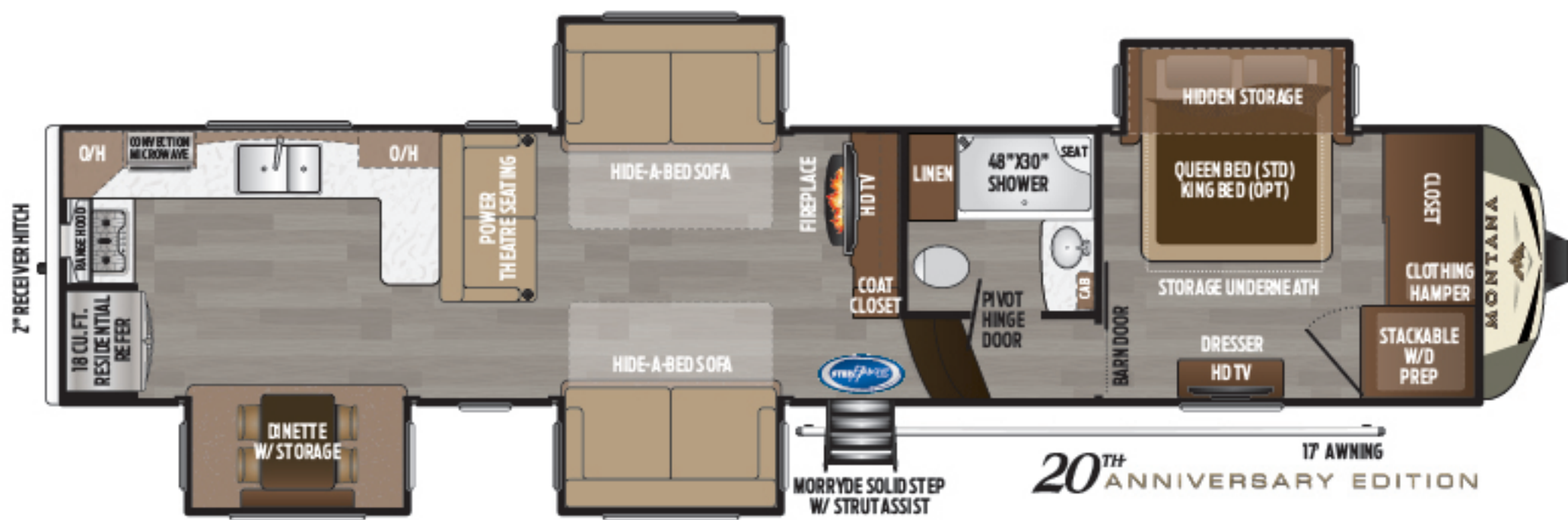




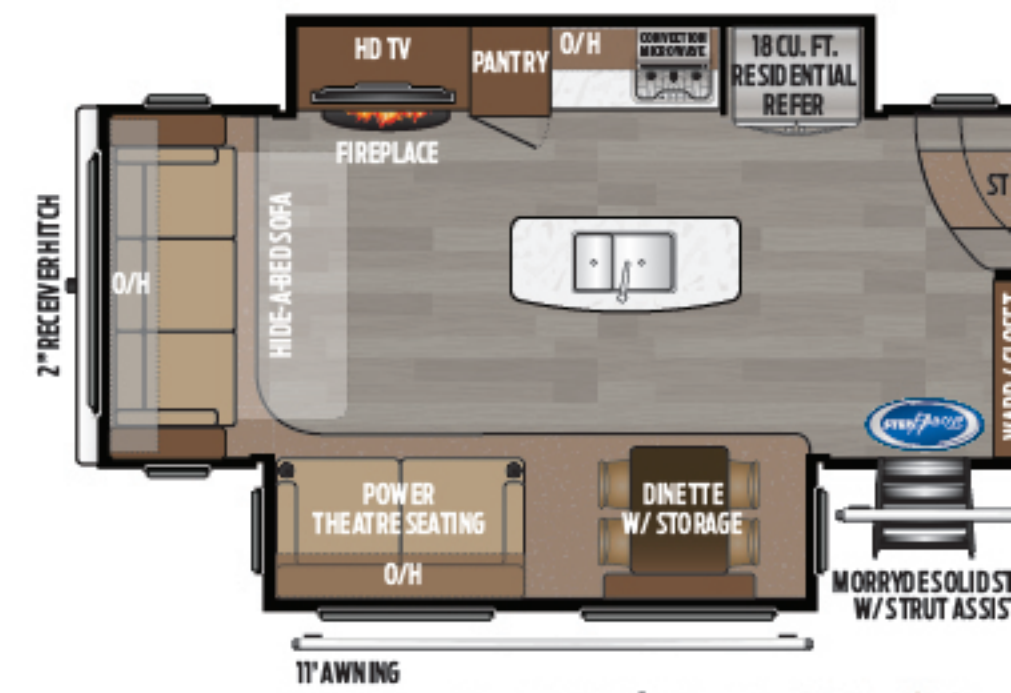
**3120/3121RL** Rear living room, three slides  
 RV REFRIGERATOR RES. REFRIGERATOR Weight: 11895 LBS. | Length: 35'



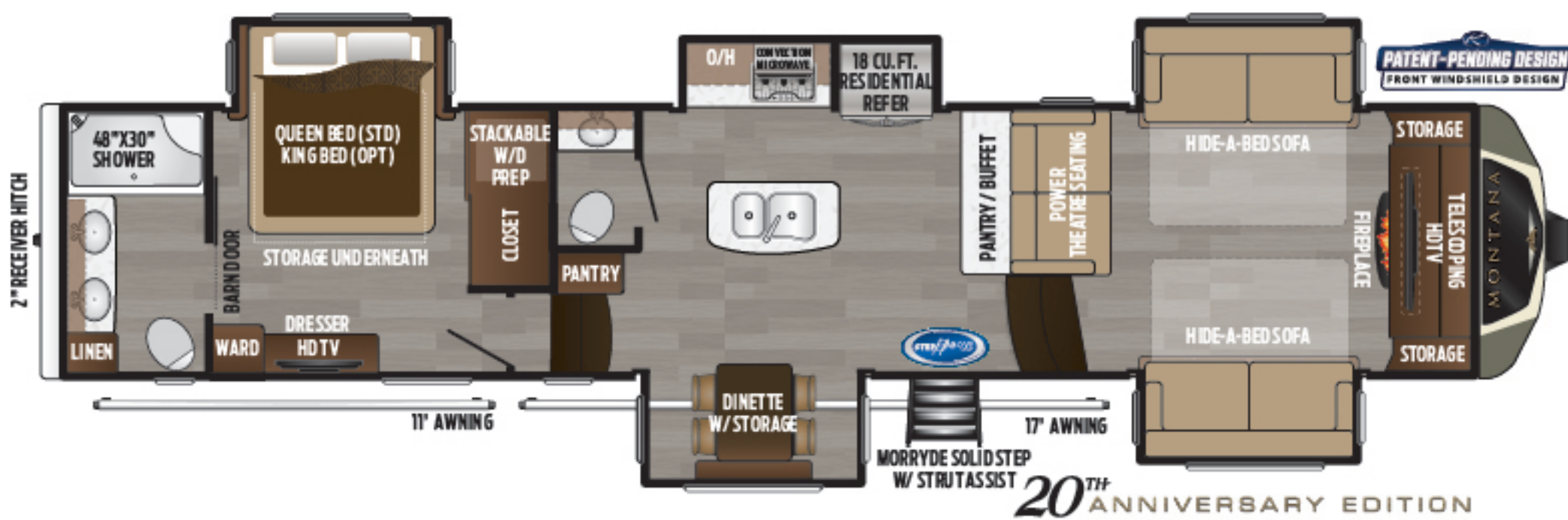
**3130RE** Rear en...  
 RV REFRIGERATOR Weight...



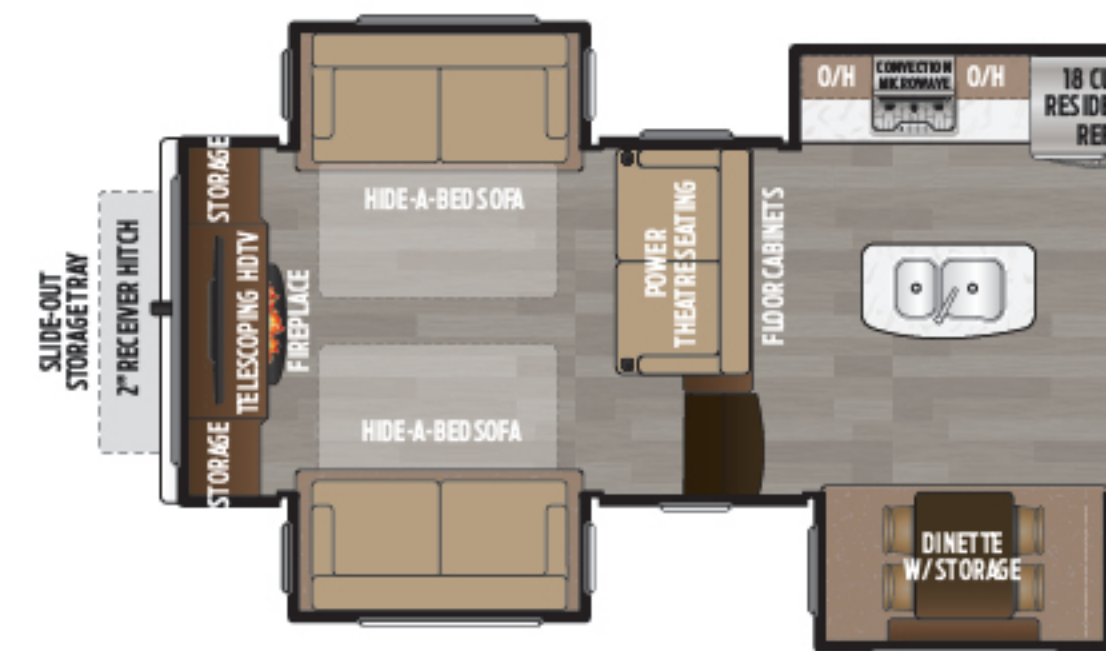
**3700/3701LK** Luxury rear kitchen, four slides  
 RV REFRIGERATOR RES. REFRIGERATOR Weight: 12960 LBS. | Length: 40' 6"



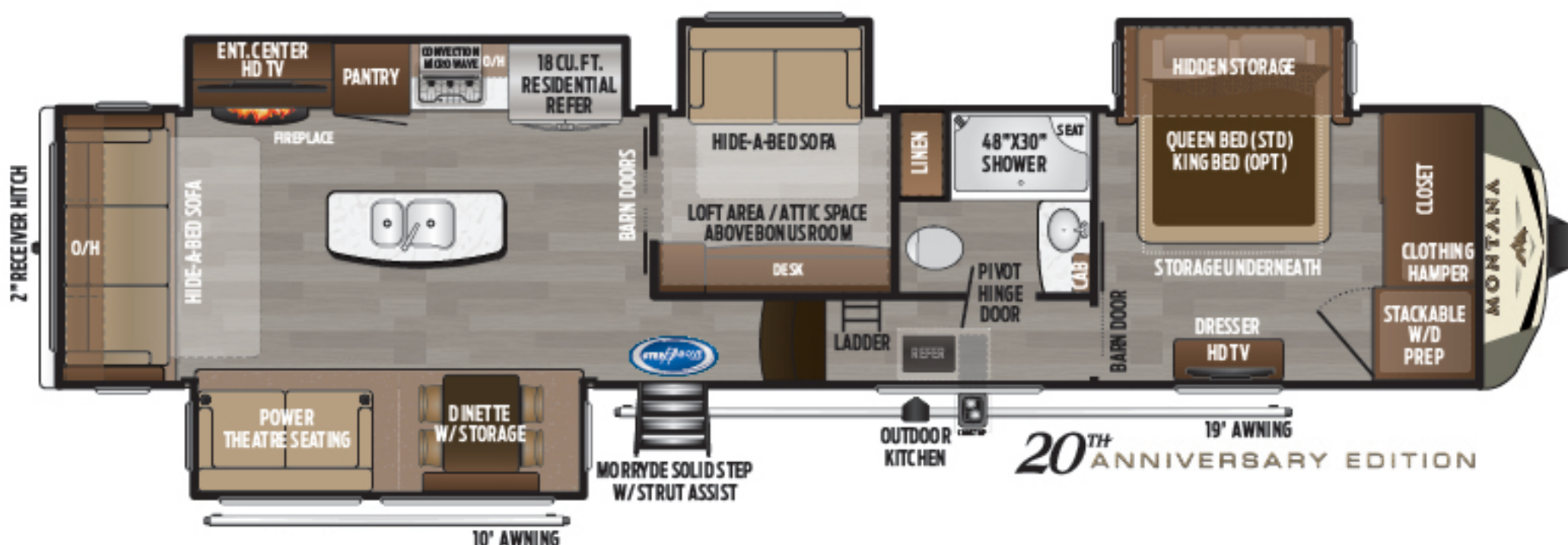
**3720/3721RL** Rear...  
 RV REFRIGERATOR RES. REFRIGERATOR Weight...



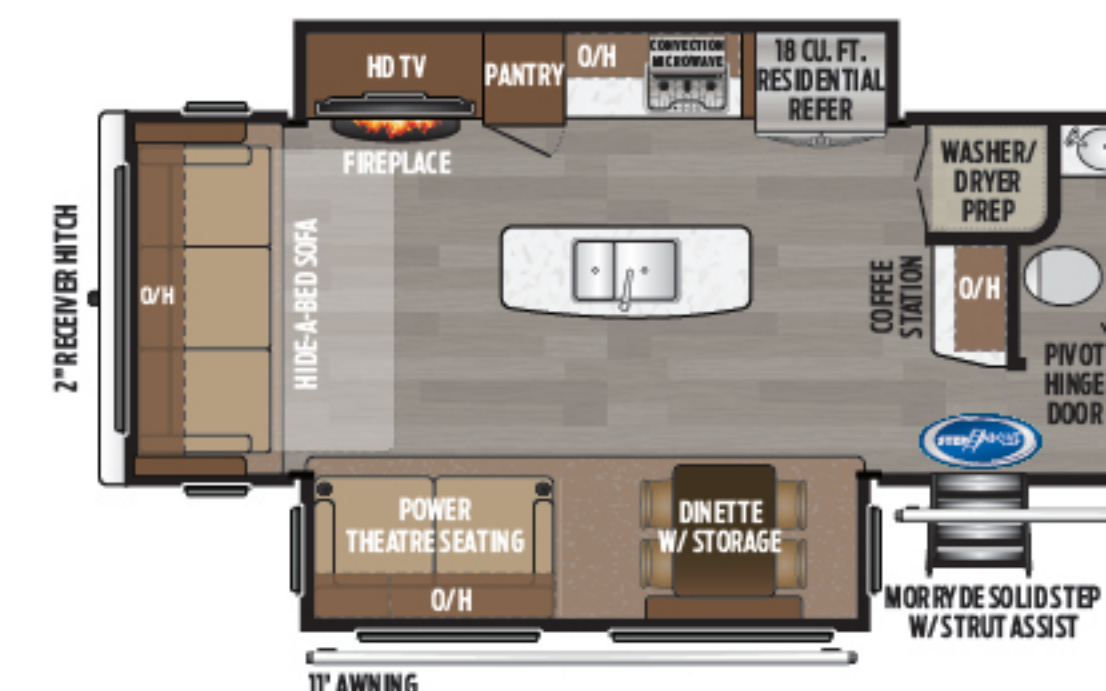
**3760/3761FL** Front living w/ full bathroom and half bathroom  
 RV REFRIGERATOR RES. REFRIGERATOR Weight: TBD LBS. | Length: 41' 0"



**3790/3791RD** Elev...  
 RV REFRIGERATOR RES. REFRIGERATOR Weight...



**3854/3855BR** Bonus room w/ loft and outside kitchen  
 RV REFRIGERATOR RES. REFRIGERATOR Weight: 13630 LBS. | Length: 40' 10"

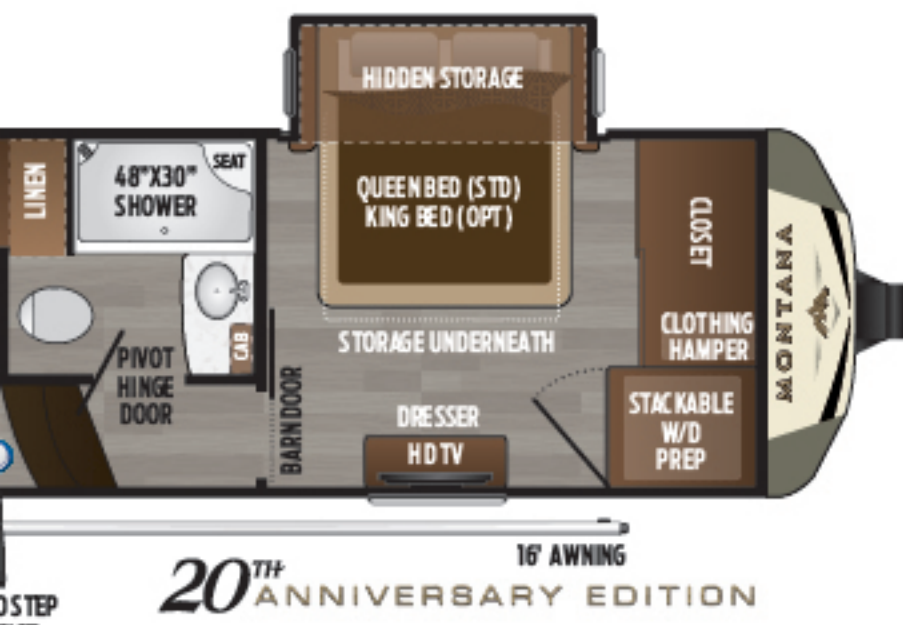


**3920/3921FB**  
 RV REFRIGERATOR RES. REFRIGERATOR

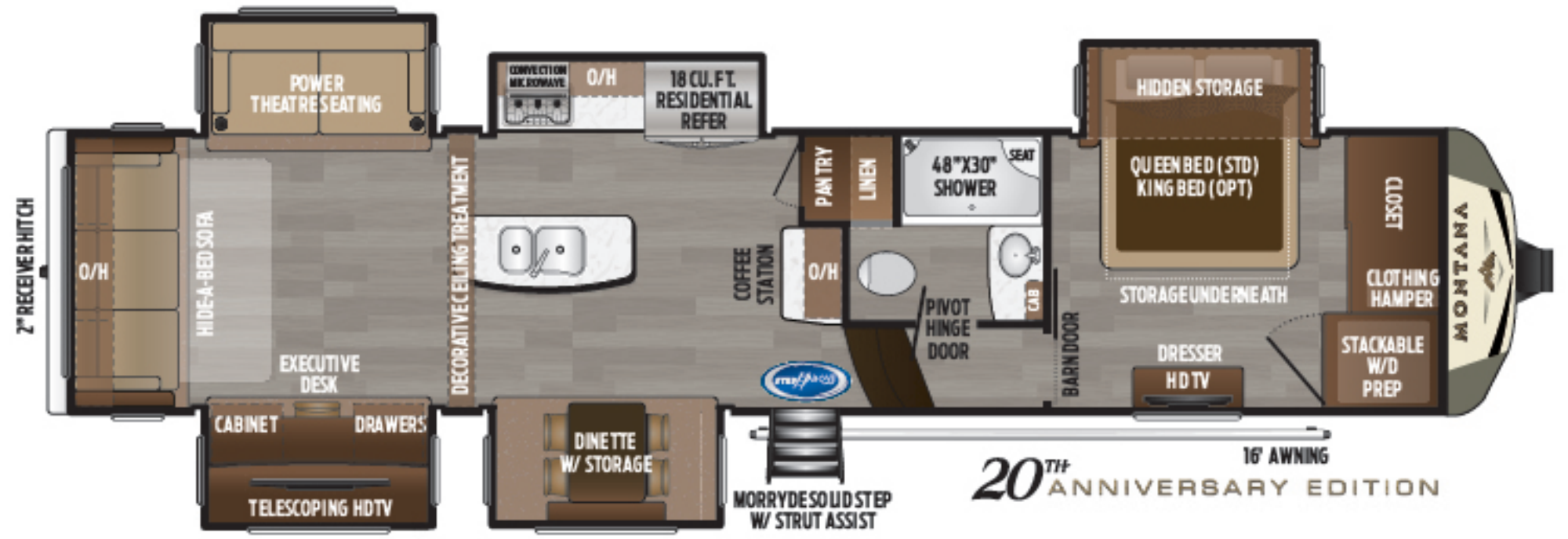


# Montana

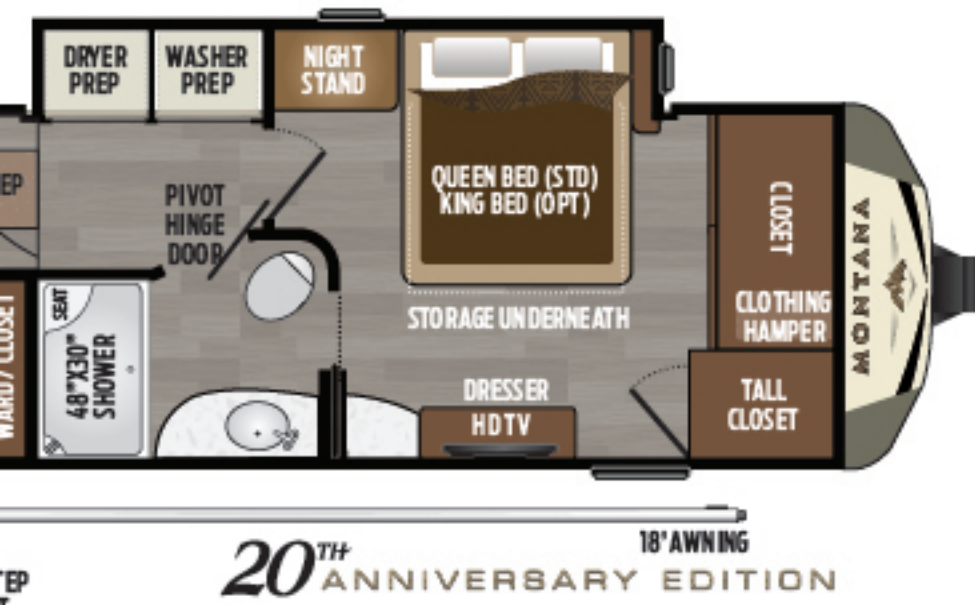
## FIFTH WHEEL FLOOR PLANS



entertainment, three slides  
Weight: 11958 LBS. | Length: 35' 2"



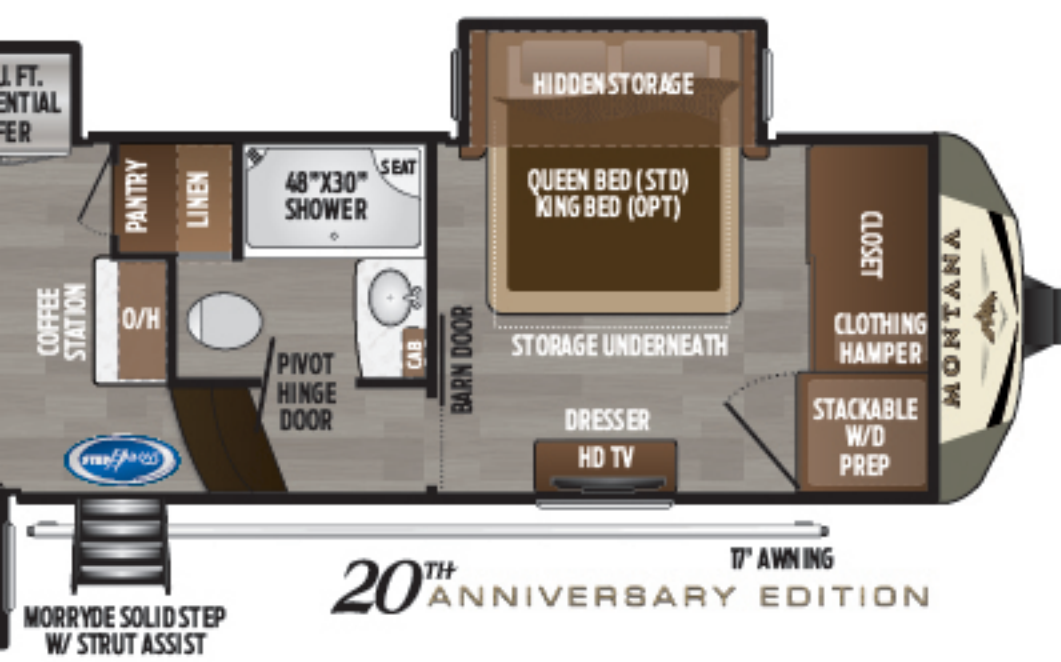
**3560/3561RL** | Rear living room w/ executive desk  
RV REFRIGERATOR RES. REFRIGERATOR  
Weight: 13050 LBS. | Length: 38' 5"



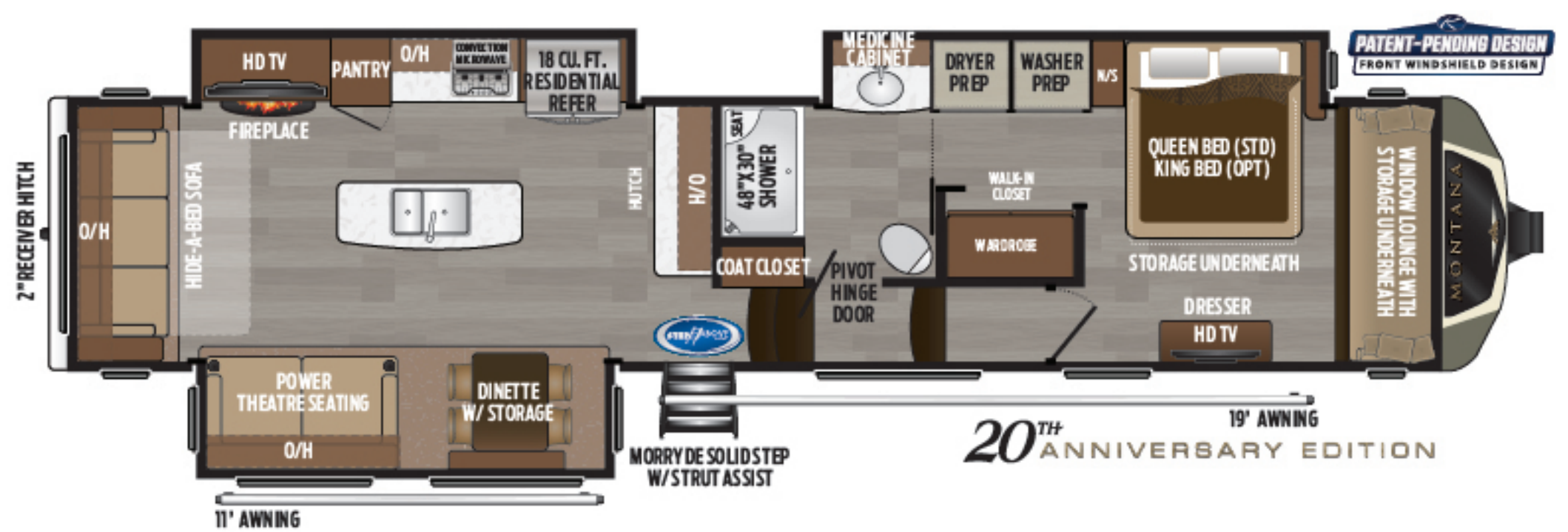
living room w/ dual-entry bathroom  
Weight: 13055 LBS. | Length: 39' 7"



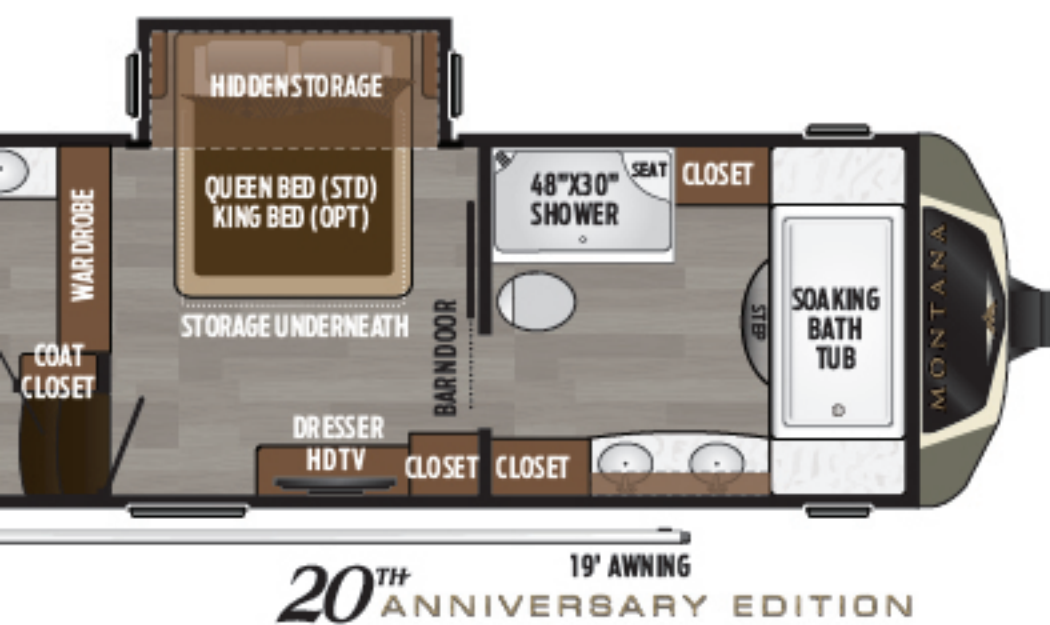
**3740/3741FK** | Front kitchen w/ opposing front slides  
RV REFRIGERATOR RES. REFRIGERATOR  
Weight: TBD LBS. | Length: 39' 10"



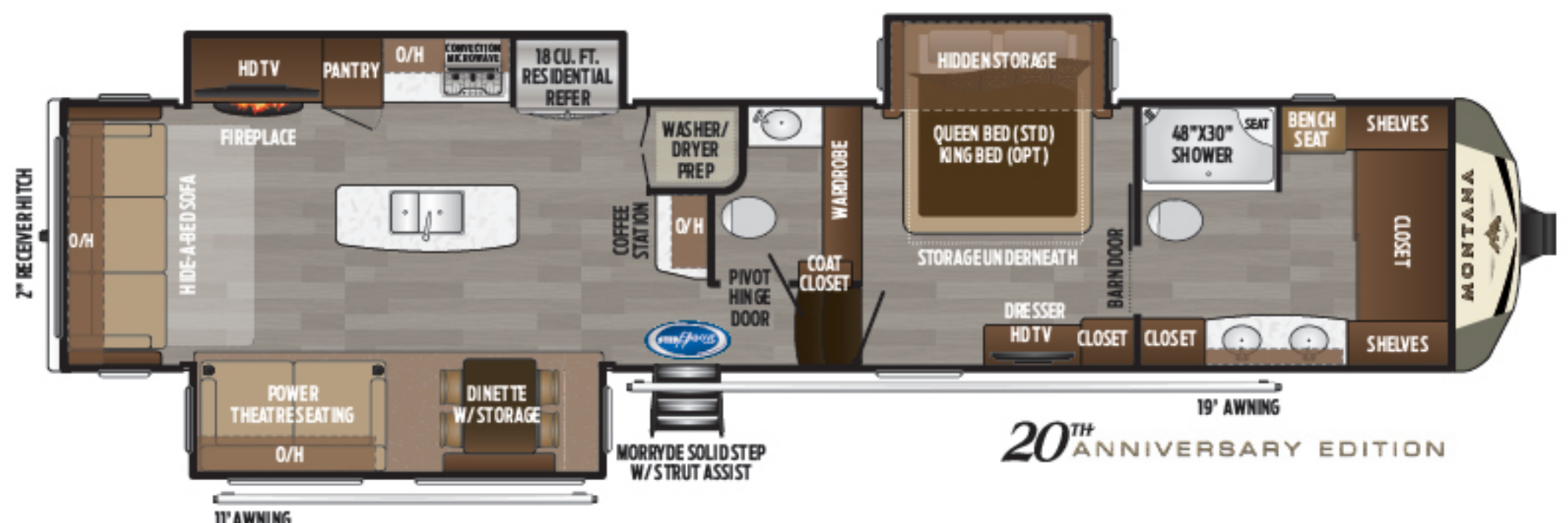
ated rear den w/rear pullout storage  
Weight: 13905 LBS. | Length: 40' 4"



**3810/3811MS** | Rear living room w/ master suite walk-through closet  
RV REFRIGERATOR RES. REFRIGERATOR  
Weight: 13350 LBS. | Length: 40' 9"



Front bathroom w/ soaker tub  
Weight: 13810 LBS. | Length: 41' 4"



**3930/3931FB** | Front bathroom w/ front wardrobe  
RV REFRIGERATOR RES. REFRIGERATOR  
Weight: 13586 LBS. | Length: 41' 5"





more product detail at  
[www.keystonerv.com/montana](http://www.keystonerv.com/montana)



## Settle for nothing short of a Montana

When you walk into a Montana, you'll notice the difference immediately—stunning, timeless, and inspiring, there is a reason why owners are so passionate about their Montana RVs. Rich, detailed cabinetry and moldings paired with luxurious stone tile-inspired flooring set the stage for modern luxury. Sophisticated appointments like glass panel doors, tile backsplash and show-stopping lighting complete the look. Unexpected touches like an executive work space, Furrion® Chef Collection kitchen appliances with convection microwave, Jensen® entertainment system, and Denver Mattress Company® bedding will make you fall in love with your Montana a little more every day.





Redesigned master suite and stylish furniture with heated seats, massage, LED lights and USB ports.



Glass Tile Backsplash



Full-size desk, champagne décor

Choose from Champagne (left) and Bourbon (bottom left)



Jensen® entertainment center



Stunning hardwood cabinetry





more product detail at  
[www.keystonerv.com/montana](http://www.keystonerv.com/montana)

## Make A Statement with Custom Full-Body Paint

Fade and peel-resistant automotive-grade paint available on Montana Legacy Edition coaches.



(3) COLOR OPTIONS

1

CASHMERE

2

COBALT

3

STERLING



## New Optional Outdoor Kitchen

Campsite entertainment at its finest

Transform your Montana with an optional outdoor kitchen that boasts two refrigerators, a stove top, utensil storage, and roomy counter space for food prep, bar or buffet. When the party's over, the entire kitchen easily tucks back into your pass-through storage.







## Why Solar?

### OVERALL BENEFITS OF SOLAR

Solar power is quiet, has no moving parts, and reduces energy costs. Best of all, it provides power silently for enjoyment during camp quiet time and recharges throughout the day.

- Freedom. Solar allows RVers to use their 12v systems and some appliances in “off the grid” locations
- Noise. Solar is virtually soundless. Generators are noisy and most campgrounds employ “quiet hours” after dark.
- Easy to operate. Unlike generators which require regular maintenance and refueling, solar requires no fuel and minimal maintenance.
- Green. Reduce carbon emissions

### WHAT IS SPECIAL ABOUT THE MONTANA SOLAR PANEL?

The grid style 265 watt solar panel operates at a higher voltage and provides more power than smaller, less advanced RV solar panels.

The solar panel is aluminum framed with screw-less corner joints to provide superior rigidity. High impact resistance affords superior resistance during severe weather including high wind, driving rain, heavy snow and hail.

### WHAT IS A 30 AMP MPPT CONTROLLER?

The 30 Amp MPPT controller sits between an energy source (panels) and energy storage (batteries). The controller prevents overcharging by limiting the amount and rate of charge to your batteries and protects against drainage by shutting down if stored power falls below 50 percent capacity.

- Maximum Power Point Tracking (MPPT) controllers go a step further by optimizing the conversion of solar energy into the best voltage for your particular batteries, providing more and better power generation.
- The Jaboni 30 Amp MPPT controller protects batteries from overcharging with automatic temperature compensation and MPPT (Maximum Power Point Tracking) technologies. MPPT delivers more power to your batteries when you need it most. The internal DC to DC converter provides up to 40% more power than competing PWM technology.
- PWM = Pulse Width Modulated digital regulator
- MPPT = Maximum Power Point Tracking

### WHAT ARE THE BENEFITS OF THE 2000 WATT INVERTER?

The inverter turns the low-wattage DC power produced by the solar panels and stored in batteries into AC power, which is the type of power used by most appliances. The inverter in solar powered Montana FWs will send AC power to the living area TV, refrigerator, a kitchen outlet and a bedroom outlet. Montana owner's can use the inverted outlets to run small appliances like a coffee maker, blender, hair dryer or CPAP machine!

DISCLAIMER: Product information is as accurate as possible as of the date of publication of this brochure. All features, floor plans, and specifications in this brochure are subject to change without notice. Please also consult Keystone's web site at [www.keystonerv.com](http://www.keystonerv.com) for more current product information and specifications. Tow Vehicle Disclaimer. CAUTION: Owners of Keystone recreational vehicles are solely responsible for the selection and proper use of tow vehicles. All customers should consult with a motor vehicle manufacturer or their dealer concerning the purchase and use of suitable tow vehicles for Keystone products. Keystone disclaims any liability or damages suffered as a result of the selection, operation, use or misuse of a tow vehicle. KEYSTONE'S LIMITED WARRANTY DOES NOT COVER DAMAGE TO THE RECREATIONAL VEHICLE OR THE TOW VEHICLE AS A RESULT OF THE SELECTION, OPERATION, USE OR MISUSE OF THE TOW VEHICLE. \*Length is defined as the distance from the centerline of hitch pin/coupler to rear bumper of trailer. Please review owner's manual prior to purchase for more information on service warranties, extended use, towing and maintenance. Owner's manuals can be found at [keystonerv.com](http://keystonerv.com).



MODEL	WEIGHT	CARRYING CAPACITY	HITCH WEIGHT	FRESH WATER	WASTE WATER	GRAY WATER	LPG	LENGTH*	HEIGHT
3120/3121RL	11895	4455	2350	66	49	88	60	35'	13' 5"
3130RE	11985	4395	2380	66	49	88	60	35' 2"	13' 5"
3560/3561RL	13050	3450	2560	66	49	88	60	38' 5"	13' 5"
3700/3701LK	12960	3440	2510	66	49	88	60	40' 6"	13' 5"
3720/3721RL	13055	3695	2765	66	49	88	60	39' 7"	13' 5"
3740/3741FK	13305	2895	2225	66	39	78	60	39' 10"	13' 5"
3760/3761FL	TBD	TBD	TBD	TBD	TBD	TBD	TBD	41' 0"	13' 5"
3790/3791RD	13905	2695	2620	66	49	88	60	40' 4"	13' 5"
3810/3811MS	13350	3400	2780	66	49	88	60	40' 9"	13' 5"
3854/3855BR	13630	3270	2940	66	49	88	60	40' 10"	13' 5"
3920/3921FB	13810	3035	2845	54	88	88	60	41' 4"	13' 5"
3930/3931FB	13586	2914	2530	66	88	88	60	41' 4"	13' 5"

LIVING AREA FEATURES	
Hidden cabinet hinges	●
Solid hardwood slide-out fascia	●
6' 6" tall main slide-outs	●
Full perimeter crown molding: living area, kitchen and bathroom hallway	★
Shaw carpet with R2X Protection	●
Armstrong flooring with 3-year cold cracking warranty	●
Flush-mounted LED interior Lights	◆
Day & night roller shades	★
Tri-fold hide-a-bed sofa	◆
Theatre seating with power recliners	◆
LED motion sensor light at steps	★
KITCHEN FEATURES	
18 cu. ft. 4-door RV refrigerator (select models)	●
French door residential refrigerator with ice maker and 1000 watt inverter (select models)	●
Full extension drawer guides	●
Pull out kitchen trash can (select models)	●
Tumbled stone backsplash	●
Solid surface kitchen countertops	◆
Solid surface flush-mount sink covers	◆
Sink cover storage below kitchen sink	◆
Deep 60/40 stainless steel sink	◆
High-rise faucet with integrated pull out sprayer	◆
30" over-the-range convection/microwave oven	◆
Furrion® RV Chef Collection 9000 BTU oven with auto-ignite	◆
Furrion® RV Chef Collection cooktop	◆
Wall-mounted, free standing dinette with two (2) fixed and two (2) folding chairs (n/a 3740/41FK)	◆
Chair Buddy™ to secure dinette chairs (n/a 3740/41FK)	●
Central vacuum with interior and exterior ports plus toe kick sweep	◆
Motion sensor LED light in pantry (select models)	★
Power vent fan with rain sensor	■
LED accent lighting below kitchen countertops	★

HOME ENTERTAINMENT	
Jensen® DVD/CD/MP3 entertainment system with Bluetooth	●
Marine grade exterior speakers	●
EXCLUSIVE KeyTV™ satellite prep	◆
Winegard® Rayzar Z-1 HD digital TV antenna	◆
Jensen® 50" HD LED TV in living area	◆
Jensen® 32" HD LED TV in bedroom	◆
BEDROOM FEATURES	
60" x 80" Queen Bed	●
Reading lights over bed	●
Massive storage under bed	●
Wood TV cabinet	●
Denver Mattress Company® mattress	★
Two (2) bedside electrical outlets	◆
Bedside night stands	◆
Prepped for combo or stackable washer/dryer with separate 20 AMP circuits for each appliance	◆
Barn door with magnetic latch	★
Motion sensor LED light in bedroom closet	★
"Easy sweep" vinyl flooring ipo carpet	★
Laundry hamper (select models)	★
Six drawer extra capacity dresser	★
Folding dinette chair storage in washer / dryer closet	★
BATHROOM FEATURES	
Sky light over shower	■
12-Gallon dsi gas/electric water heater with 16.2 GPH Fast recovery	■
Undermount sink	●
Solid surface countertop	●
Three (3) Drawers one (1) door vanity	●
Brushed nickel shower head and faucet	●
Seamless 48" x 30" fiberglass shower	●
Porcelain foot flush toilet	●



50 AMP Service	◆
80 AMP converter with Charge Wizard technology	◆
Maxxair mini vent deluxe with LED night light	★
<b>CONSTRUCTION FEATURES</b>	
Unified wiring standard: each wire color-coded and numbered	●
5" Arched roof rafters	●
Welded aluminum framed walls and floors	●
Laminated sidewalls with dual layered luan and metal backing strips to anchor interior cabinets	●
Seamless 5/8" thick floor decking	●
Powder coated 12" steel I-beam frame	●
Seamless roto-cast holding tanks	●
Double-insulated laminated rear wall (non legacy)	★
<b>FOUR SEASON FEATURES</b>	
35,000 BTU Furnace	■
3"x 14" in-floor straight line heat duct system	■
15,000 BTU Whisper Quiet main air conditioner system, bedroom	■
15,000 BTU Whisper Quiet main air conditioner system, living room	■
Wired and framed for 3rd air conditioner	■
16,500 BTU heat pump on main air conditioner	■
Tested and approved for 0 degree usage	■
Two attic vents for cross-ventilation	■
R-38 equivalent insulated roof	■
R-21 equivalent insulated floor	■
R-15 equivalent insulated slide out floors	■
R-11 equivalent insulated sidewalls	■
Insulated and heated holding tanks and dump valves	■
Insulated in-floor water lines	■
Enclosed and heated low point drains	■
12V electric tank heaters	■
Residential ceiling fan	■
48" LED fireplace that can heat 5110 BTU (n/a 3560/3561RL)	■
<b>TOWING FEATURES</b>	
Max Turn™ front cap and radius frame with Hitch Vision™	●
Hitch Vision™ mirror	●
Road Armor™ pin box	●
Prepped for rear view camera	●
EXCLUSIVE Road Armor™ suspension	●
Sailun G-range tires with 6-year manufacturer warranty	●
Heavy duty wet bolt kit with bronze bushings and 1/2" shackle links	●
16" 8-lug aluminum wheels (110 PSI)	●
7000 lb. Dexter® E-Z lube® axles with self adjusting brakes	●
Back-up lights	●
Undermount spare tire and carrier	●

<b>EXTERIOR FEATURES</b>	
Automotive paint with 2-layers of clear coat on fiberglass front cap	●
High-gloss gel coated sidewalls and rear wall	●
Automotive frameless safety glass windows	●
Extra large fold away entry handle	●
Rear roof ladder	●
Roof mounted solar prep	●
Slam latch pass-through storage compartment doors	●
Extra large (30" wide by 78" tall) entry door with friction hinge and integrated window shade	◆
Enormous drop-frame pass-through storage compartment	◆
MORryde® Step Above™ entry steps with strut assist	◆
Motion sensor LED lights in pass-through storage compartment	★
LED safety light package: entry step, gooseneck, upper slide-outs and sewer termination	★
LED light package: "super-brite" taillights with backup, marker and off-door scare light	★
<b>EASY SET-UP FEATURES</b>	
Dometic® 12v electric patio awning with LED lights and Power Channel	★
Second 12v electric patio awning with LED lights on slide-out (select models)	★
Heated central exterior water and convenience center <ul style="list-style-type: none"> <li>• Outside shower with quick connect hose</li> <li>• Black tank flush</li> <li>• Easy winterization kit</li> <li>• Water heater bypass</li> <li>• Power tank fill</li> <li>• Enclosed low point drains</li> <li>• Battery disconnect</li> <li>• Cable/satellite hook-ups</li> <li>• 12v light</li> </ul>	●
<b>OPTIONS</b>	
<b>INTERIOR OPTIONS</b>	
• King bed	
<b>EXTERIOR OPTIONS</b>	
• 265 watt solar panel with 2000 watt inverter	
• Full body paint (requires Montana Legacy Edition Package)	
• Six-point hydraulic automatic leveling system (Mandatory option)	
• Dual-pane frameless windows	
• Slide-out awnings package	
• Generator ready (Onan 5.5 KW specifications)	
• Onan® Marquis Gold 5.5 KW LP generator	
<b>MONTANA LEGACY PACKAGE (OPTIONAL)</b>	
• Disc brakes	
• Generator prep	
• Surge protector	
• Furrion® S-Vision camera system (side view and rear view)	
• iN-Command® control system	
• Hardwood cabinet framing (stiles)	
• Electric power cord reel (n/a 3130RE)	
• Painted rear fiberglass cap (n/a 3700, 3701, 3790, 3791)	

● -STANDARD FEATURE   
 ◆ -RESIDENTIAL LIVING PACKAGE   
 ■ -FOUR SEASON LIVING PACKAGE  
★ -20TH ANNIVERSARY EDITION



BUILT FOR THE LONG HAUL



PRINT 1.2019

