

TRAVEL TRAILERS BY DUTCHMEN

ASPEN TRAIL



**Introducing the new
ASPEN TRAIL LE**



Dutchmen®

Legendary Innovation. Trailblazing Value.



**INDUSTRY
LEADING**

82"
**CEILING
HEIGHT**

(72" INSIDE
SLIDE ROOMS)

A STANDING OVATION

Featuring an impressive 82" interior height (6-ft. in slide room), getting around your trailer isn't an issue, it's figuring out what to do with all your indoor space.

**GO ON THE JOURNEY
OF A LIFETIME WITH THE
ASPEN
TRAIL**

With a name that reminds you of beautiful mountain vistas and once-in-a-lifetime excursions, the Aspen Trail is one travel trailer that lives up to its name, then exceeds all expectations.

With the Aspen Trail, you'll journey with wall-to-wall interior features, like an undermount farmstyle sink, 3 burner range with oven, high output furnace, real maple hardwood doors and drawers, and 82" interior ceiling height. Plus, you'll have peace of mind in any location with mega pass-thru storage that has oversized baggage doors on both sides, a heated and enclosed underbelly, and seamless one piece roof. The only thing the Aspen Trail can't do is plan your next adventure... but it can try.



AN EXPANSIVE AWNING

Coming standard with a power awning with LED lights, the Aspen Trail lets you stay close to Mother Nature whether it's rain or shine.

2480RBS

2910BHS



FRONT TO BACK FREEDOM

Every inch of the Aspen Trail has been designed for full-featured living, from the amenity-rich kitchen area with farm-style sink and cover, to the ample amounts of additional storage space and radius overhead cabinets for keeping essentials close at hand.

1. ROOM TO STRETCH

The bedroom features wardrobe storage with an overhead shelf and reading lights, while delivering travelers with a 60x80 Residential Queen Everdream Mattress.

2. SLEEPING SPACE

Select Aspen Trail bunk bed floorplans are configured to have extra seating areas, transforming the space from a standard bunkhouse to a game room.

3. MORE STORAGE

Oversized entertainment centers keep plenty of movies, books, and anything else you want to take with you on the road.

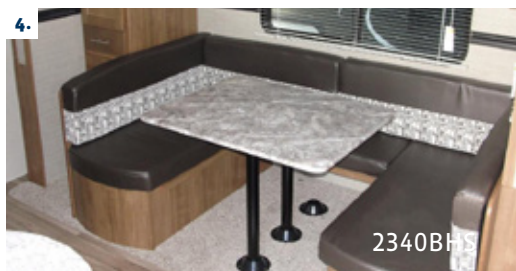


4. CONVERTIBLE DINETTE

With the option to set up as straight or U-shaped, the industry-leading convertible dinette comfortably sits a group of adults as well as a family. At night, arrange the cushions into a bed to accommodate extra sleeping campers.

5. TAKE IT OUTSIDE

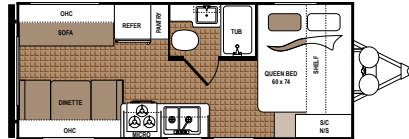
Enjoy the pleasure of cooking outdoors while entertaining your neighbors with the convenient outdoor kitchen on select Aspen Trail floorplans.



ASPEN TRAIL FLOORPLANS



ASPEN TRAIL | 1900RB
 Ext. Length: 24' 8" Ext. Height: 10' 8"
 Average Shipping Weight: 4,107 Sleeps: 2-3



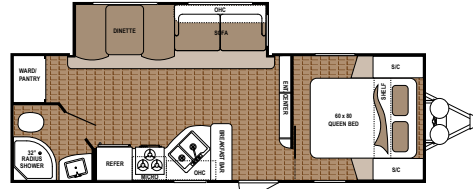
ASPEN TRAIL | 1930RDWE*
 Ext. Length: 22' 11" Ext. Height: 10' 8"
 Average Shipping Weight: 4,183 Sleeps: 3-4



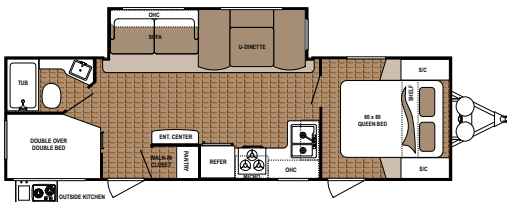
ASPEN TRAIL | 2050QBWE*
 Ext. Length: 24' 10" Ext. Height: 10' 8"
 Average Shipping Weight: 4,307 Sleeps: 3-4



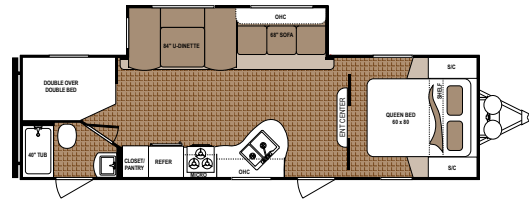
ASPEN TRAIL | 2460RLS
 Ext. Length: 28' 3" Ext. Height: 11' 4"
 Average Shipping Weight: 5,514 Sleeps: 3-5



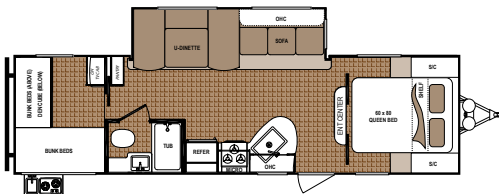
ASPEN TRAIL | 2480RBS
 Ext. Length: 28' 9" Ext. Height: 11' 3"
 Average Shipping Weight: 5,842 Sleeps: 4-5



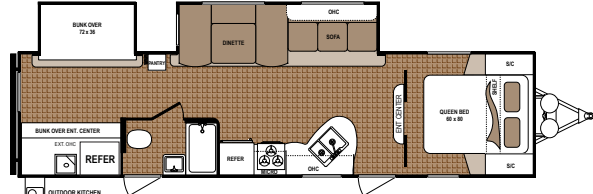
ASPEN TRAIL | 2790BHS
 Ext. Length: 31' 10" Ext. Height: 11' 3"
 Average Shipping Weight: 6,497 Sleeps: 6-8



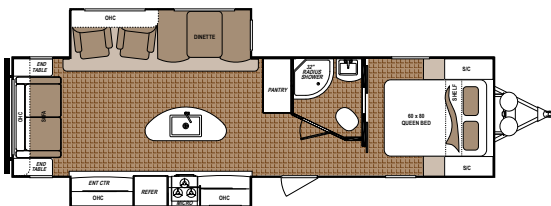
ASPEN TRAIL | 2810BHS
 Ext. Length: 32' 2" Ext. Height: 11' 4"
 Average Shipping Weight: 6,297 Sleeps: 6-8



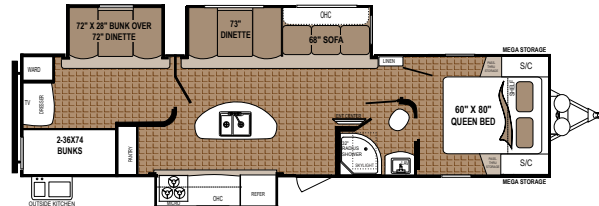
ASPEN TRAIL | 2910BHS
 Ext. Length: 33' 2" Ext. Height: 11' 2"
 Average Shipping Weight: 6,597 Sleeps: 6-8



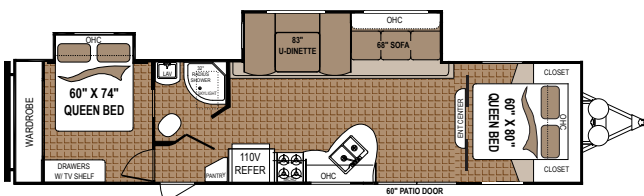
ASPEN TRAIL | 3010BHDS
 Ext. Length: 35' 9" Ext. Height: 11' 7"
 Average Shipping Weight: 7,588 Sleeps: 6-8



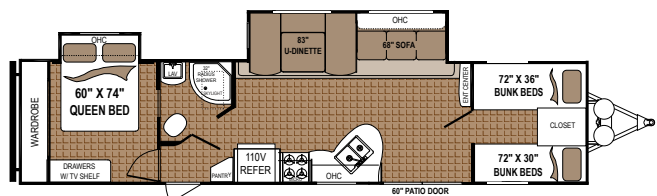
ASPEN TRAIL | 3070RLS
 Ext. Length: 34' 11" Ext. Height: 11' 2"
 Average Shipping Weight: 7,128 Sleeps: 4-6



ASPEN TRAIL | 3100BHS
 Ext. Length: 37' 6" Ext. Height: 11' 8"
 Average Shipping Weight: 8,555 Sleeps: 8

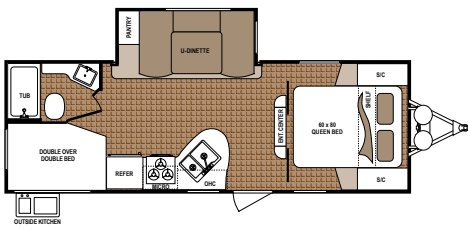


ASPEN TRAIL | 3600QBDS
 Ext. Length: 39' 9" Ext. Height: 11' 5"
 Average Shipping Weight: 8,126 Sleeps: 8-10



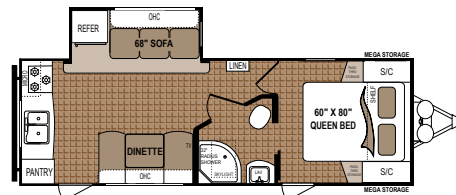
ASPEN TRAIL | 3650BHDS
 Ext. Length: 39' 9" Ext. Height: 11' 5"
 Average Shipping Weight: 8,126 Sleeps: 8-10

*Models only available in the Western Region



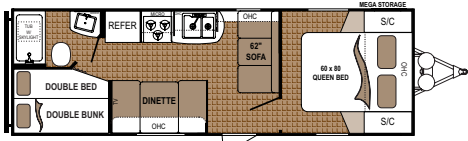
ASPEN TRAIL 2340BHS

Ext. Length: 27' 2" Ext. Height: 11' 4"
Average Shipping Weight: 5,599 Sleeps: 3-4



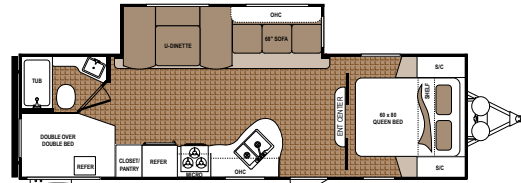
ASPEN TRAIL | 2390RKS

Ext. Length: 27' 2" Ext. Height: 11' 4"
Average Shipping Weight: 5,600 Sleeps: 3-4



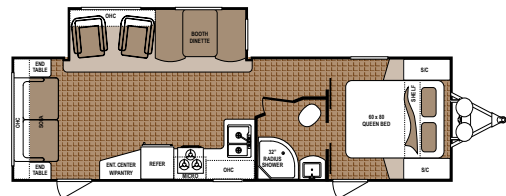
ASPEN TRAIL | 2710BH

Ext. Length: 28' 7" Ext. Height: 10' 7"
Average Shipping Weight: 4,517 Sleeps: 4-6



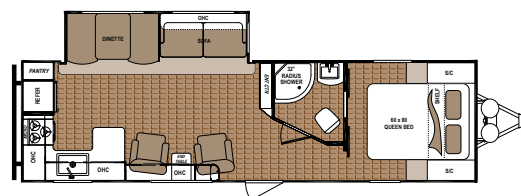
ASPEN TRAIL | 2750BHS

Ext. Length: 31' 4" Ext. Height: 11' 3"
Average Shipping Weight: 6,264 Sleeps: 6-8



ASPEN TRAIL 2860RLS

Ext. Length: 32' 6" Ext. Height: 11' 3"
Average Shipping Weight: 6,450 Sleeps: 4-5



ASPEN TRAIL | 2880RKS

Ext. Length: 32' 11" Ext. Height: 11' 3"
Average Shipping Weight: 6,510 Sleeps: 4-6

STANDARDS AND OPTIONS ASPEN TRAIL

MANDATORY OPTIONS

Aspen Trail Upgrade Package

ASPEN TRAIL UPGRADE PACKAGE

- Aerodynamic Front Profile
- LED Interior Lighting
- Aspen Trail Central Command Center
- Bluetooth Stereo w/CD/DVD/Aux
- Full Extension, Roller Ball Bearing Drawer Guides
- Maple Hardwood Cabinet Doors
- Laundry Chute (Where Applicable)
- 60x80 Residential Queen Everdream Mattress
- Upgraded Beaufloor Wood Plank Lino
- Seamless Thermofoil Countertops

INTERIOR STANDARD FEATURES

- 3 Burner Range w/Oven
- 6-cu. ft. Gas/Electric Refrigerator
- 6-gal. Gas/Electric Water Heater w/DSI
- 12V 55-amp Converter
- Undermount Kitchen Sink
- 82" Interior Height, 6 ft. Ceiling in Slide Room
- 8,000-BTU Non-Ducted Air (1700 & 1900)
- 13,500-BTU Ducted Air (n/a 1700 & 1900)
- Bath Skylight

- Bathtub Exhaust Fan
- Bedspread
- Black Refrigerator Insert
- Cable TV Hookup w/Booster
- Foot Flush Toilet
- High Rise Faucet
- High Output Furnace
- Microwave
- Radius Overhead Cabinets
- Range Hood w/Light and Exhaust Fan
- Shower/Tub Surround
- Water Heater Bypass

EXTERIOR STANDARD FEATURES

- Diamond Plate Rock Guard
- Digital TV Antenna
- Easy Lube Axles
- Extended Long Rain Gutters
- Front and Rear Stabilizing Jacks
- Heated and Enclosed Underbelly
- Manual Awning
- Mega Pass-Thru Storage Compartment
- Power Cord
- Radial Tires
- Seamless One Piece Roof
- Tinted Safety Glass Windows
- Triple Entry Steps (Deep Slides)
- Two 20-lb. LP Bottles w/Cover

- Two Exterior Speakers
 - Walk-On Roof
- OPTIONS**
- 14" Aluminum Wheels (Smaller Models)
 - 15" Aluminum Wheels (Larger Models)
 - 29" LCD TV
 - 15,000-BTU A/C IPO 13.5-BTU A/C
 - 2nd 13.5-BTU Non-Ducted Bedroom A/C (Select Models Only)
 - 2nd A/C Prep w/50-amp Service (Select Models Only)
 - Electric Front & Rear Stabilizer Jacks
 - Front Queen Bed IPO Bunks (3600 Only)
 - Power Awning w/LED Lights
 - Power Tongue Jack w/Docking Light
 - Spare Tire w/Cover
 - Tri-Fold Hide-A-Bed IPO Flip Sofa (Select Models Only)
 - Two 30-lb. LP Bottles w/Cover
 - Outside Shower

- 60x80 Residential Queen Bed
 - 82" Interior Height
 - 6' Tall Flush Floor Slideouts (26BH & 31BH Only)
 - LED Interior Lighting
 - Front Diamond Plate Protection
 - Tinted Safety Glass Windows
 - Four Stabilizer Jacks
 - Easy Lube Axles
 - Double Entrance Step
 - 30-amp Power Cord
 - 120V Exterior Outlet
 - 35-amp Converter
 - Dual 20-lb. LP Bottle
 - Fire Extinguisher
 - LP/Carbon Monoxide/Smoke Detectors
 - Systems Monitor Panel
 - 13.5-BTU A/C
 - 6-gal. Gas Water Heater
- CODES & SEALS**
- CSA Construction and Seal
 - RVIA Seal
 - State Seal (where applicable)
 - Winterization

STANDARDS AND OPTIONS ASPEN TRAIL LE SERIES

ASPEN TRAIL LE PACKAGE

- 60x80 Residential Queen Bed
- 82" Interior Height
- 6' Tall Flush Floor Slideouts (26BH & 31BH Only)
- LED Interior Lighting
- Front Diamond Plate Protection
- Tinted Safety Glass Windows
- Four Stabilizer Jacks
- Easy Lube Axles
- Double Entrance Step
- 30-amp Power Cord
- 120V Exterior Outlet
- 35-amp Converter
- Dual 20-lb. LP Bottle
- Fire Extinguisher
- LP/Carbon Monoxide/Smoke Detectors
- Systems Monitor Panel
- 13.5-BTU A/C
- 6-gal. Gas Water Heater

- Water Heater Bypass Kit
- High Output Furnace w/Auto Ignition
- 6-cu. ft. Refrigerator
- Microwave
- 3 Burner Range Top
- Galley Sink w/High Rise Faucet
- Full Extension Drawer Guides Throughout
- Shower Curtain
- Foot Pedal Flush Toilet
- Mini Blinds Throughout
- Soft Valance Tops Only
- Upgraded Residential Flooring
- AM/FM/CD/MP3 w/Two Interior & Two Exterior Speakers
- TV Antenna w/Booster
- Winterization

OPTIONS

- 15k A/C in place of 13.5k
- Spare Tire

PEACE OF MIND

At Dutchmen, quality is our standard. Every single Dutchmen RV that comes off the line receives its own 253-point pre-delivery inspection and is backed by the industry's best 3-year limited structural warranty.

DISCLAIMER: Product information is as accurate as possible as of the date of brochure publication. All features, floorplans and specifications in this brochure are subject to change without notice. Please consult Dutchmen's website at www.Dutchmen.com for current product information and specifications. Tow Vehicle Disclaimer. CAUTION: Owners of Dutchmen recreational vehicles are solely responsible for the selection and proper use of tow vehicles. All customers should consult with a motor vehicle manufacturer or their dealer concerning the purchase and use of suitable tow vehicles for Dutchmen products. Dutchmen disclaims any liability or damages suffered as a result of the selection, operation, use or misuse of a tow vehicle. DUTCHMEN'S LIMITED WARRANTY DOES NOT COVER DAMAGE TO THE RECREATIONAL VEHICLE OR THE TOW VEHICLE AS A RESULT OF THE SELECTION, OPERATION, USE OR MISUSE OF THE TOW VEHICLE. REFERENCE DUTCHMEN MANUFACTURING OWNERS MANUAL FOR LIMITED WARRANTY DETAILS.



31BH

AN INDOOR OPEN SPACE

The LE features 82" of interior ceiling height to give you the room you need to enjoy all of the amenities packed into this lightweight travel trailer.

TRAVEL LIGHT WITH THE NEW ASPEN TRAIL LE

The Aspen Trail LE is light on travel, but heavy on features. Dutchmen travelers will find that they have everything they need for extended outings, including luxuries typically reserved for heavy-duty trailers, such as a 6-cu. ft. refrigerator, a 60x80 residential queen bed, LED interior lighting and upgraded residential flooring.



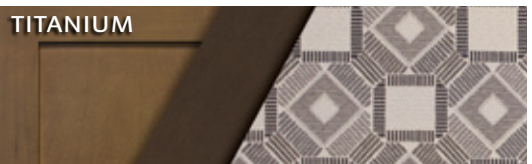
Mealtime is made easy with the kitchen's 3 burner range top, microwave and galley sink.



Maximize storage in the LE entertainment centers and oversized cabinets.

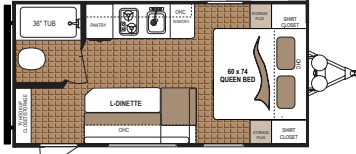


Bunkhouse models allow enough space for the whole family.

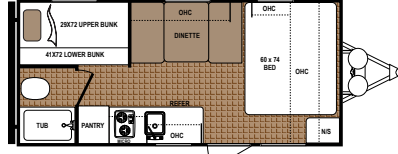


TITANIUM

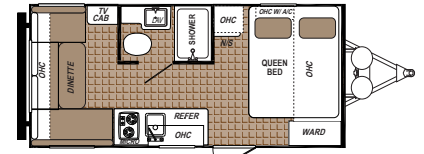
ASPEN TRAIL LE FLOORPLANS



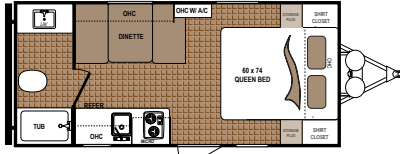
ASPEN TRAIL LE | 1600RB
 Ext. Length: 21' 5" Ext. Height: 8' 11"
 Average Shipping Weight: 3,125 Sleeps: 2-4



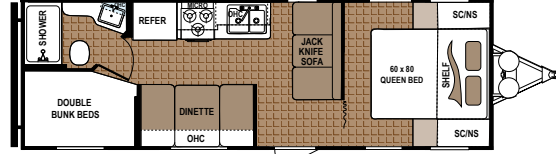
ASPEN TRAIL LE | 1700BH
 Ext. Length: 21' 5" Ext. Height: 8' 8"
 Average Shipping Weight: 3,199 Sleeps: 4-5



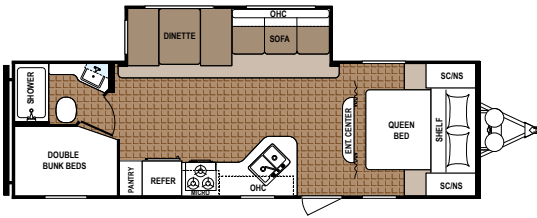
ASPEN TRAIL LE | 1750RD
 Ext. Length: 21' 5" Ext. Height: 8' 10"
 Average Shipping Weight: 3,136 Sleeps: 2-4



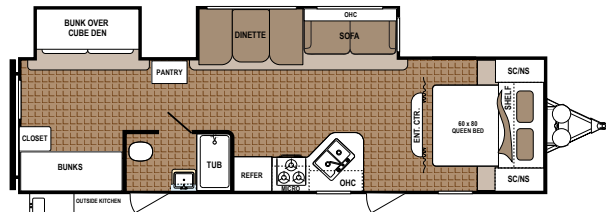
ASPEN TRAIL LE | 1800RB
 Ext. Length: 21' 8" Ext. Height: 8' 10"
 Average Shipping Weight: 3,044 Sleeps: 2-4



ASPEN TRAIL LE | 25BH
 Ext. Length: 28' 8" Ext. Height: 10' 6"
 Average Shipping Weight: 4,517 Sleeps: 6-8



ASPEN TRAIL LE | 26BH
 Ext. Length: 30' 8" Ext. Height: 11' 1"
 Average Shipping Weight: 5,636 Sleeps: 7-9



ASPEN TRAIL LE | 31BH
 Ext. Length: 35' 10" Ext. Height: 11' 3"
 Average Shipping Weight: 7,060 Sleeps: 7-8

ASPEN TRAIL / ASPEN TRAIL LE SPECIFICATIONS

MODEL	FLOORPLAN	DIMENSIONS			WEIGHTS (LBS.)			TANKS (GALS.)		
		*EXTERIOR TRAVEL LENGTH	EXTERIOR WIDTH	EXTERIOR HEIGHT (WITH A/C)	**AVERAGE SHIPPING WEIGHT	DRY HITCH WEIGHT	CARGO CARRYING CAPACITY	***FRESH WATER CAPACITY	GREY WATER CAPACITY	BLACK WATER CAPACITY
Aspen Trail	1900RB	24' 8"	96"	10' 8"	4,107	493	3,493	52	42	42
Aspen Trail	1930RDWE	22' 11"	96"	10' 8"	4,183	453	3,390	52	42	42
Aspen Trail	2050QBWE	24' 10"	96"	10' 8"	4,307	460	3,180	52	42	42
Aspen Trail	2340BHS	27' 4"	96"	11' 4"	5,599	609	1,959	52	42	42
Aspen Trail	2390RKS	27' 2"	96"	11' 4"	5,600	776	2,086	52	42	42
Aspen Trail	2460RLS	28' 3"	96"	11' 4"	5,514	552	2,086	52	42	42
Aspen Trail	2480RBS	28' 9"	96"	11' 4"	5,842	660	3,838	52	42	42
Aspen Trail	2710BH	28' 7"	96"	10' 7"	4,745	559	2,945	52	42	42
Aspen Trail	2750BHS	31' 4"	96"	11' 4"	6,264	669	3,392	52	42	42
Aspen Trail	2790BHS	31' 11"	96"	11' 4"	6,497	650	3,183	52	84	42
Aspen Trail	2810BHS	32' 2"	96"	11' 4"	6,297	819	3,383	52	42	42
Aspen Trail	2860RLS	32' 6"	96"	11' 4"	6,450	724	3,230	52	42	42
Aspen Trail	2880RKS	32' 11"	96"	11' 3"	6,510	656	3,168	52	84	42
Aspen Trail	2910BHS	33' 2"	96"	11' 2"	6,597	777	3,364	52	42	42
Aspen Trail	3010BHDS	35' 9"	96"	11' 7"	7,588	910	2,092	52	42	42
Aspen Trail	3070RLS	34' 11"	96"	11' 2"	7,128	948	2,286	52	42	42
Aspen Trail	3100BHS	37' 6"	96"	11' 8"	8,555	1,026	2,614	52	78	42
Aspen Trail	3600QBDS	39' 9"	96"	11' 5"	8,126	1,057	3,166	52	78	42
Aspen Trail	3650BHDS	39' 9"	96"	11' 5"	8,126	1,057	3,166	52	78	42
LE SERIES	1600RB	21' 5"	96"	8' 11"	3,125	346	725	27	28	28
LE SERIES	1700BH	21' 5"	96"	8' 8"	3,199	452	651	27	28	28
LE SERIES	1750RD	21' 8"	96"	8' 10"	3,136	450	678	27	28	28
LE SERIES	1800RB	21' 11"	96"	8' 10"	3,044	450	678	27	28	28
LE SERIES	25BH	28' 8"	96"	10' 6"	4,517	465	TBD	27	42	42
LE SERIES	26BH	30' 8"	96"	11' 1"	5,636	762	TBD	27	42	42
LE SERIES	31BH	35' 10"	96"	11' 3"	7,060	1,057	TBD	52	78	42

*Length is defined as the distance from the centerline of hitch pin/coupler to rear bumper of trailer. **Our weights represent how most units are built, inclusive of many commonly-ordered options. ***Fresh water capacity includes water heater capacity.

TRAILBLAZING VALUE



MORE STANDARD FEATURES MORE VALUE

Dutchmen RVs turn more heads on the lot and in the campground than any other. Why? While other manufacturers offer features as options, Dutchmen tends to make those same features standard. Call it “bang for the buck,” “more for your money,” or simply “more value.” **We’ve built a reputation for bringing RV owners more standard features for less money** for more than 25 years . . . and it’s a reputation we plan to keep.

THE INDUSTRY'S BEST WARRANTY

Every Dutchmen RV comes with our all-new 3-year limited structural warranty. Dutchmen owners can expect an entire extra two years of protection and peace of mind.



Dutchmen®

Legendary Innovation. Trailblazing Value.

300

STRONG

NATIONWIDE DEALER NETWORK

More than 300 Dutchmen dealers across North America and our industry-leading service center in Goshen, Indiana, combine for your peace of mind before, during and after the sale. Rest assured no matter where your travels take you, **the best-resourced RV manufacturing company in the world is behind you all the way.**

PO BOX 2000 • 2164 Caragana Court
Goshen, Indiana 46527 Sales: 574.537.0600
www.dutchmen.com

At Dutchmen, quality is our standard. **Every single Dutchmen RV that comes off the line receives its own pre-delivery inspection.** You won't find this commitment to quality anywhere else.



Scan this QR Code for the latest updates to floorplans and specs of Aspen Trail models.



www.dutchmen.com

Visit us online to see all of the Dutchmen brands, innovative models and spacious floorplans.

Your local dealer

From giving advice to servicing products, we consider our loyal dealers the best resource for learning about Dutchmen products.

ASP-DM0117-30k