

DESTINATION TRAILERS  
[keystonerv.com/retreat](http://keystonerv.com/retreat)

# RETREAT



The ultimate  
ownership experience.

# The ultimate ownership experience.

The goal of Keystone RV Company is to surprise and delight our owners at each and every touchpoint. We're happy when our campers are happy, and we are committed to providing the very best ownership experience in the industry.



**Keystone RV  
Company**

## 1 EASIER SHOPPING.

At Keystone, we make choosing an RV as easy as finding the Big Dipper on a dark summer night. With comprehensive online product information, Key Connect™ product advisors, and an unparalleled dealer network, we will help you select the perfect RV for your family's adventure.

## 2 INNOVATIVE THINKING.

The road's a nicer place when you have the industry's smartest features behind you. Keystone leads the pack in patented innovations that make our RVs safer, more comfortable, and easier to operate.

## 3 LONG HAUL QUALITY.

To keep you on the road, there are certain things we just won't build a Keystone RV without. Game-changing features like our Unified Wiring Standard, Tru-Fit™ five-point slide construction, and no-fail Tuf-Lok™ A/C duct joiners combined with exhaustive testing and inspections are some of the reasons why Keystone is able to offer our owners the industry's best 3-year limited structural warranty.

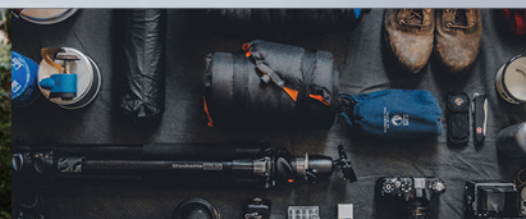
## 4 WORRY-FREE CUSTOMER SERVICE.

Wherever the road takes you, you're never too far from an authorized Keystone service center. We also offer live service assistance, ultra-fast parts shipping, online maintenance tips and tricks, and a single-point warranty claims policy. *That's* peace of mind.

## 5 KEYSTONE NATION.

When you choose Keystone, you become a part of one of the largest camping families in the country. We're Keystone Nation. A friendly community where people share photos, travel tips and amazing stories – all in the spirit of camaraderie and adventure. Come join us.

Experience the Retreat lifestyle by visiting [#keystoneretreat](#)



# RETREAT

FIND YOUR DESTINATION



DESTINATION TRAILERS

## The Ultimate Getaway.

Designed for extended-stay living, Keystone RV's Retreat destination trailers offer larger living spaces and residential features that give you everything you want when you're ready to get away. From smarter construction and insulation, to thoughtful design and lifestyle features, Retreat's worry-free living may make you rethink what it means to be "home."

For more information, please visit [keystonerv.com/retreat](http://keystonerv.com/retreat)

# Keystone EXCLUSIVE Innovations

Year after year, Keystone RV's experienced team delivers Built For the Long Haul quality you expect and exclusive innovations you won't find anywhere else.



## 3-year Limited Structural Warranty, 1-year Limited Base Warranty

Every new Keystone RV comes with the industry's best three-year limited structural warranty AND a one-year limited base warranty. Ask your dealer, visit [keystonerv.com](http://keystonerv.com), or call Keystone owner relations for details.



## 4G LTE and Wi-Fi Prep

All units are equipped with a new antenna that integrates 4G LTE and Wi-Fi with standard VHF/UHF/AM/FM reception.

# Keystone EXCLUSIVE Innovations



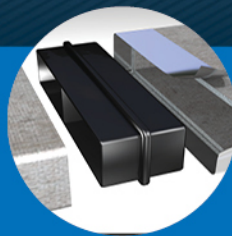
## Color-Coded Wiring

Easy-to-trace circuits simplify electrical and entertainment system troubleshooting.



## In-Floor Heating Ducts

Ducting allows for more airflow that distributes heat evenly for optimal comfort.



## Tuf-Lok® A/C Duct Joiners

Crush resistant design securely joins A/C ductwork, drastically reducing chilled-air leaks and boosting cooling efficiency and comfort.



## Tru-fit™ slide construction

A more durable slide room design that minimizes functional motor and structural stress, resists leaking.

## Vacation Luxury

Residential-style amenities that add comfort and style to your vacation home.



### Stainless Steel Refrigerator

Large 18 cu. ft. refrigerator featuring double doors and freezer drawers. Store it all and make no sacrifices



### King Bed Master Suite

Featuring roomy walk-around beds with abundant storage.



### 8' Ceiling Height

Taller ceilings creates an open feel for the coach's interior and allows for spacious head room.



### Washer / Dryer Prep

Spend more nights on vacation with washer/dryer prep in select models.



### Authentic Hardwood Cabinetry

Where others in this segment use wrapped doors, Retreat's real wood cabinets are sturdier, more durable and last longer in most climates.



### Retractable Faucet

Pull-out faucet with premium 60/40 sink for easier food prep and clean up.



### Backsplash

Stylish backsplash with accent lighting.



### Furrion® Chef Collection Cooktop & Oven

Chef-inspired upgraded cooktop & oven that gives you the perfect blend of performance, precision and style.



### Solid Surface Countertops

Solid-Surface marble-look countertops that are durable and moisture resistant.

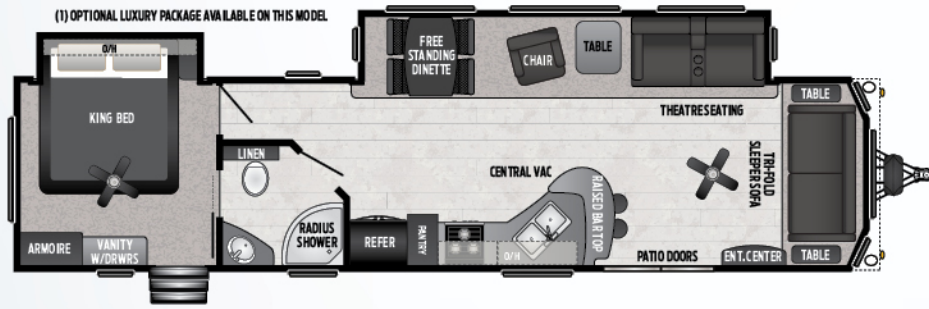


### Fireplace

Oversized fireplace adds warmth and a touch of home.

## Long Haul Quality

With extended stay living in mind, Retreat incorporates features that are built to last.



### 39/391FDEN

Two slides w/ king bed slide, front entertainment, patio door, park model  
Weight: 10793 LBS. | Length: 40' 11"



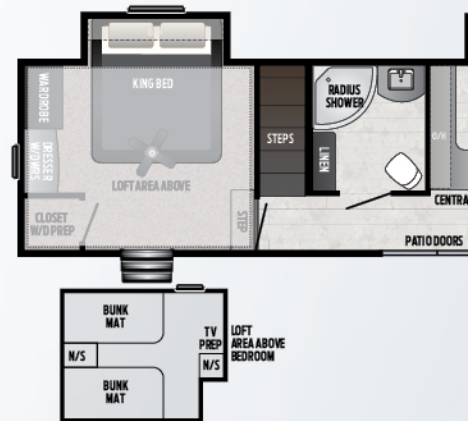
### 39/391FKSS

Three slides w/ king bed s  
Weight: 11007 LBS. | Length:



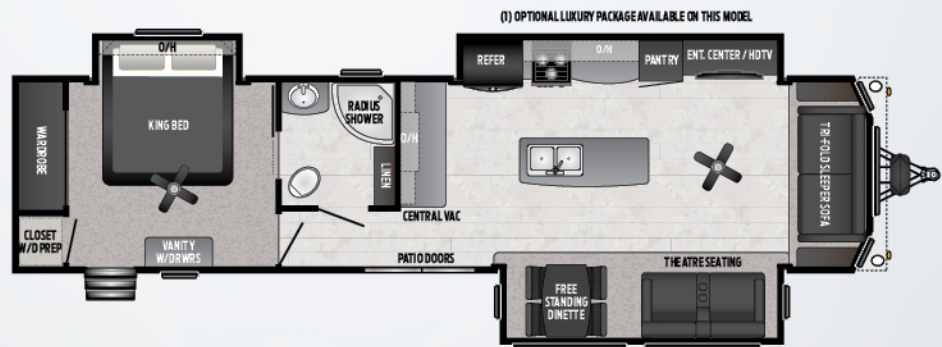
### NEW! 39/391FLRS

Exclusive slideout entry, front living, patio door, park model  
Weight: 10790 LBS. | Length: 40' 11"



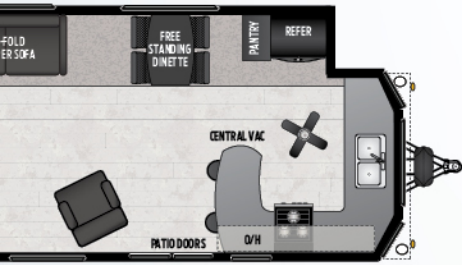
### 39/391LOFT

Three slides w/ king b  
Weight: 12535 LBS. | L

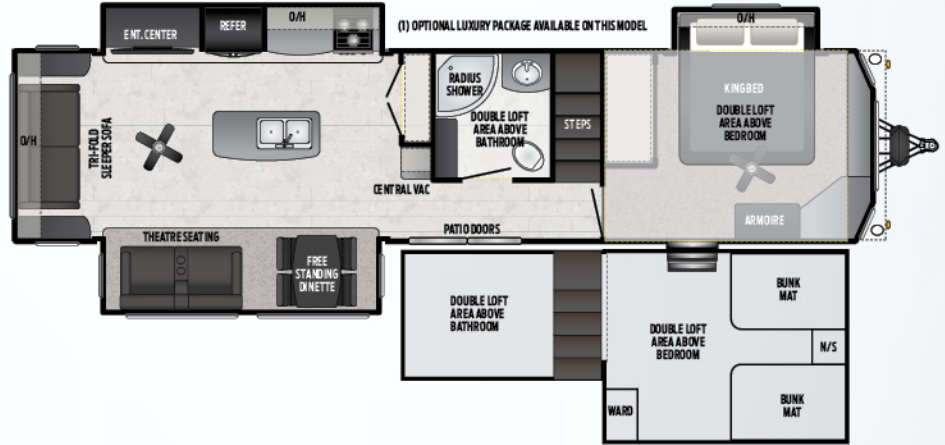


### 39/391MKTS

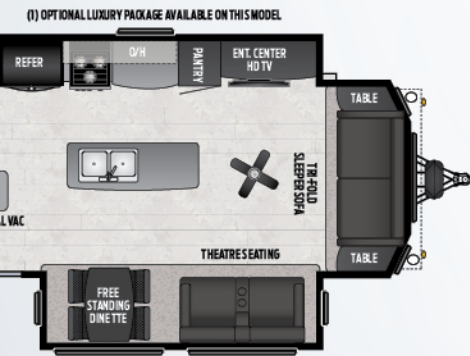
Three slides w/ king bed slide, mid-kitchen, w/d prep, patio door, park model  
Weight: 11765 LBS. | Length: 40' 8"



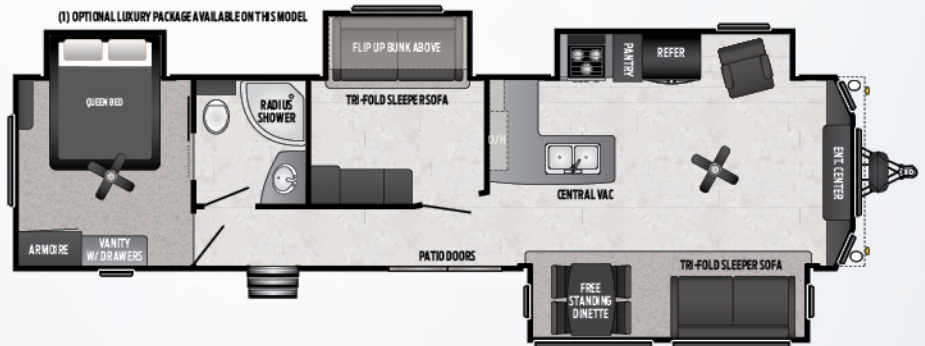
Slide, front kitchen, washer dryer prep, patio door, park model  
Length: 40' 2"



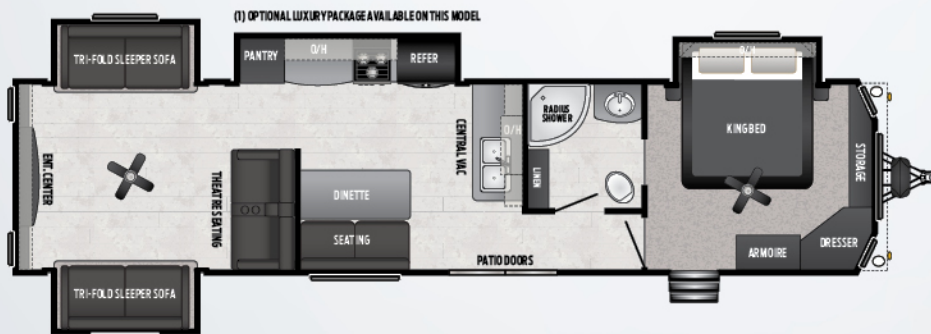
**39/391FLFT** | New three slides w/ king bed slide, double loft, w/d prep, patio door, park model  
Weight: 13044 LBS. | Length: 40' 11"



Bed slide, loft, washer dryer prep, patio door, park model  
Length: 40' 8"



**39/391MBNK** | Four slides w/ bed slide, mid-bunkhouse, patio door, park model  
Weight: 12037 LBS. | Length: 39' 10"



**39/391RDEN** | Four slides w/ king bed slide, apposing tri-fold sofas, rear entertainment, patio door, park model  
Weight: 12105 LBS. | Length: 40' 11"



more product detail at  
[www.keystonerv.com/Retreat](http://www.keystonerv.com/Retreat)



## Room to Breathe

---

Spacious and aesthetically pleasing, Retreat interiors are made to feel like home. High ceilings with skylights, oversized windows, and sturdy glass sliding doors usher in plenty of natural light for an open and welcoming environment. Solid surface countertops and upgraded wood blinds add to the residential feel. Along with an abundance of light and space, we made sure to include unique features seen in model home design trends—large appliances, a built-in wine rack, stylish kitchen backsplash, and so much more.





## Two Décor Options

Choose from Lodge (shown left) with its rich espresso leatherette and dynamic valances, and Timber (shown right and below) with caramel leatherette furniture and muted fabric accents.



## Enjoy an Evening In

Cozy up to Retreat's entertainment center with built-in television, Bluetooth®-compatible CD and DVD players, and oversized fireplace.



MODEL	WEIGHT	CARRYING CAPACITY	HITCH WEIGHT	FRESH WATER	WASTE WATER	GRAY WATER	LPG	LENGTH*	HEIGHT
39FDEN	10710	2490	1255	53	39	78	60	40' 11"	12' 7"
39IFDEN	10793	2407	1230	53	39	78	60	40' 11"	12' 7"
39FKSS	10991	2359	1380	53	39	78	60	40' 2"	12' 7"
39IFKSS	11007	2343	1360	53	39	78	60	40' 2"	12' 7"
39FLFT	13059	941	1405	53	39	39	60	40' 11"	13' 5"
39IFLFT	13044	956	1405	53	39	39	60	40' 11"	13' 5"
39FLRS	10790	2610	1405	53	39	78	60	40' 11"	12' 7"
39IFLRS	10790	2610	1405	53	39	78	60	40' 11"	12' 7"
39LOFT	12559	1441	1700	53	39	71	60	40' 8"	13' 5"
39ILOFT	12535	1465	1725	53	39	71	60	40' 8"	13' 5"
39MBNK	12018	1382	1420	53	39	78	60	39' 10"	12' 7"
39IMBnk	12037	1263	1340	53	39	78	60	39' 10"	12' 7"
39MKTS	11768	2147	1915	53	39	71	60	40' 8"	12' 7"
39IMKTS	11765	2160	1925	53	39	71	60	40' 8"	12' 7"
39RDEN	12068	1372	1440	53	39	39	60	40' 11"	12' 7"
39IRDEN	12105	1365	1475	53	39	39	60	40' 11"	12' 7"

DISCLAIMER: Product information is as accurate as possible as of the date of publication of this brochure. All features, floor plans, and specifications in this brochure are subject to change without notice. Please also consult Keystone's web site at [www.keystonerv.com](http://www.keystonerv.com) for more current product information and specifications. **Tow Vehicle Disclaimer. CAUTION:** Owners of Keystone recreational vehicles are solely responsible for the selection and proper use of tow vehicles. All customers should consult with a motor vehicle manufacturer or their dealer concerning the purchase and use of suitable tow vehicles for Keystone products. Keystone disclaims any liability or damages suffered as a result of the selection, operation, use or misuse of a tow vehicle. KEYSTONE'S LIMITED WARRANTY DOES NOT COVER DAMAGE TO THE RECREATIONAL VEHICLE OR THE TOW VEHICLE AS A RESULT OF THE SELECTION, OPERATION, USE OR MISUSE OF THE TOW VEHICLE. \*Length is defined as the distance from the centerline of hitch pin/coupler to rear bumper of trailer. Please review owner's manual prior to purchase for more information on service warranties, extended use, towing and maintenance. Owner's manuals can be found at [keystonerv.com](http://keystonerv.com).

### LIVING ROOM HIGHLIGHTS

- Solid wood slide room fascia
- 39" main slide room depth
- Decorative plantation blinds in living area
- 72" sleeper sofa
- Oversized fireplace
- 40" OR 50" HD LED TV
- Theater Seating (select floorplans)
- DVD/AM/FM/CD/MP3 Jensen® stereo system with Bluetooth®
- 12 volt charging station
- Recliner (select floorplans)
- Free standing dinette with four chairs & flip storage
- Ceiling fan with light (select floorplans)
- Built in TV mantle

### KITCHEN HIGHLIGHTS

- Extra-deep double basin stainless steel kitchen sink
- High-rise faucet with pull-out sprayer

### KITCHEN HIGHLIGHTS (CONT.)

- Eat-in bar (select floorplans)
- Bar stools
- Waste basket storage
- Solid wood shaker-style cabinets with crown molding
- Pre-drilled and screwed hardwood cabinet framing
- Easy-glide ball bearing drawer guides
- Full-size microwave
- Furrion® RV Chef Collection cooktop & oven
- Stainless steel four-door counter-depth french door refrigerator
- Single door pantry
- Water purification system
- Upgraded central vacuum system
- Sink covers
- Solid surface countertops
- Backsplash
- Skylight

**BATHROOM HIGHLIGHTS**

Porcelain toilet with foot flush  
 Radius glass shower with surround  
 Power fan w/convenient wall mount control  
 Large medicine cabinet  
 Dressing mirror

**BEDROOM HIGHLIGHTS**

7' tall bed slide  
 Mega storage under master beds  
 Gas strut assisted bed lift  
 Etched glass cabinet doors in bed slide  
 Two door wardrobe  
 Fully extended deep dresser drawers  
 Pleated shades  
 Large panoramic window  
 Residential ceiling fan  
 Recessed decorative lighting

Prep for 2nd TV

King bed standard

**EXTERIOR**

Fiberglass front  
 Exterior soffit lights  
 Dual 30 lb LP bottles with automatic change over and cover  
 Large folding grab handle (main door)  
 2 exterior speakers  
 Residential patio/screen door  
 Exterior shower  
 Satellite / cable TV hook-up  
 110 volt exterior outlets  
 E-Coated wheels  
 Heated & enclosed underbelly

**MECHANICS**

16 gallon gas/electric DSI water heater  
 40,000 BTU furnace  
 15,000 BTU ducted air conditioner  
 Prepped for a second air conditioner  
 50 Amp electrical service with detachable cord  
 55 Amp converter  
 12 Volt water pump

**CONSTRUCTION**

Unified wiring standard, color coded & numbered  
 12" Powder coated I-beam frame  
 Darco wrapped main floor vapor moisture barrier  
 5/8" seamless Dyna Span® sub floor with limited lifetime warranty  
 2" wall studs constructed 16" on center  
 Laminated veneer lumber slideout reinforcements  
 4 1/2" crowned roof  
 Radius corner blocks around windows and compartment doors  
 Metal floor registers

**SAFETY**

Fire extinguisher  
 Smoke detector  
 LP detector  
 CO detector  
 Safety chains  
 Emergency breakaway switch

**UNIQUE RETREAT FEATURES**

Large bay windows with decorative exterior front  
 8' tall ceilings  
 102" wide-body construction  
 Detachable hitch  
 Residential high end furniture  
 Black tank flush  
 Washer and dryer prep

**OPTIONS**

Electric patio awning  
 Manual stabilizer jacks (4)  
 2nd 13.5K BTU A/C  
 Dual pane windows

**LUXURY PACKAGE (OPTIONAL)**

Champagne laminated sidewalls  
 Chefs gourmet faucet

# BUILT FOR THE LONG HAUL



PRINT 12.2019

