

OPTIONS

A



15 Cu. Ft. Fridge

B



Theater Sofa

C



Hide-a-bed

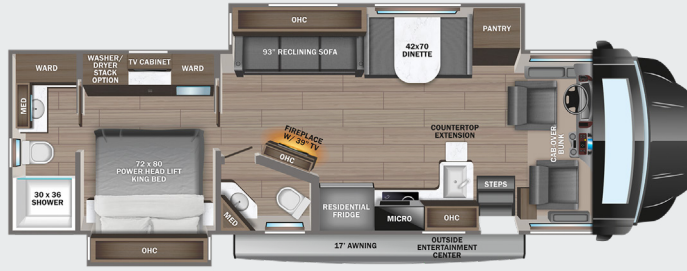
D



Freestanding Dinette

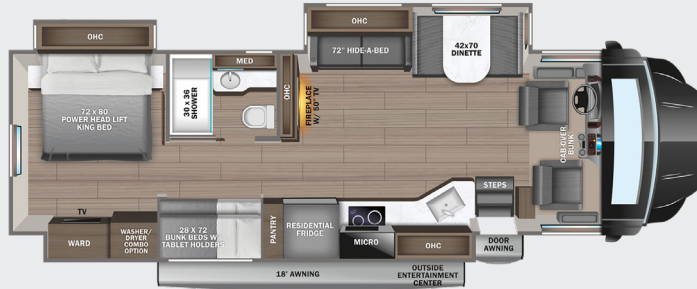
37K

OPTIONS: A, D



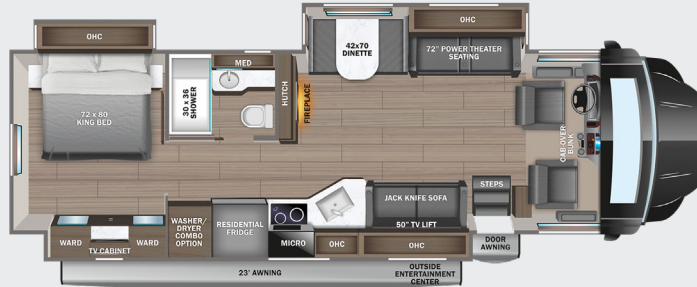
37L

OPTIONS: A, B



37M

OPTIONS: A, C, D



EXTERIOR SELECTIONS



Axis Full-Body Paint



Marmot Full-Body Paint



Marten Full-Body Paint



Ocelot Full-Body Paint

STANDARDS & OPTIONS

CUSTOMER VALUE PACKAGE

JRIDE® PREMIUM: Computer-balanced driveshaft, rear air suspension, heavy-duty rear stabilizer bar, full air brakes, SACHS shocks

One-piece, seamless, fiberglass front and rear caps
Automotive-bonded, panoramic window in front cap with power shade

Dual-pane, tinted, safety-glass windows
(2) 15,000 BTU A/C units with heat pump on main A/C
Electric patio awning with LED lights
2,000W pure sine wave inverter
Power cord reel with 50 amp service
Sony® infotainment center with Apple® CarPlay and Android Auto™

Backup and side-view cameras
Residential refrigerator
Convection microwave oven

DRIVING

Freightliner® S2RV chassis
GVWR- 31,000 lb.
GCWR- 43,000 lb.
Cummins® ISB 6.7L 360 HP diesel engine with 800 ft.-lb. torque
Allison® 3000 MH automatic transmission
185 amp alternator
G-rated highway tires- 275/80R22.5
Alcoa® aluminum wheels
Engine exhaust brake
12,000 lb. rear hitch receiver
7-pin plug
Dual 12V chassis batteries
100 gal. fuel tank
10 gal. DEF tank
Deluxe heated, remote-controlled, side-view mirrors
6-way power driver and passenger seats
Power windows and door locks
Tilt steering wheel
A/C and cruise control
Auxiliary start switch

EXTERIOR

StrongholdVBL™ roof, floor and sidewalls
Bead-foam insulation (R-24 max roof, R-9 max floor and R-8 max walls)
One-piece, seamless, crowned fiberglass roof
Premium Sikkens full-body paint
Automatic hydraulic leveling jacks
Entrance door with industry's largest travel-view window
Electric-powered entrance step
Slideout awning(s)
Exterior entertainment center with outside speakers and LED HD Smart TV mounted on swivel bracket
Winegard® In-motion satellite dish
Carpeted, full pass-through storage compartments with lockable slam-latch doors
24.5 gal. propane tank (83 lb.)
LP quick-connect hookup
Thetford® Sani-Con Turbo macerator system
Exterior utility center
Winterization drain system
Black tank flush
Outside shower
12V demand water pump
Onan® 8,000W Quiet Diesel generator and auto-gen start

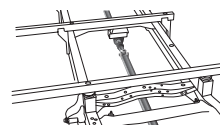
Transfer switch with reverse polarity protection
(4) 6V AGM (220Ah) house batteries on slideout tray
200W solar panel with dual controller
Third brake light

INTERIOR

Custom-molded ABS surround in cab-over area
Overhead bunk with 750 lb. capacity
JAYCOMMAND® powered by Firefly
84 in. interior ceiling height with padded vinyl ceiling
High-intensity, recessed LED ceiling lights
Vinyl plank flooring
Raised-panel hardwood cabinetry throughout
Deluxe hidden cabinet hinges
Ball-bearing drawer guides
Jayco-exclusive, easy-operation legless dinette table
2-point lap safety belts in all designated seating locations
30,000 BTU auto-ignition furnace
10 gal. gas/electric water heater
Electric fireplace
LED HD Smart TV in living area
Cable TV hookup with RG-6 coax and video selector switch
Winegard 2.0 Wi-fi/4G antenna
Wood-framed kitchen window with spice cabinets
2-burner induction cooktop
LED-lit, solid-surface kitchen countertops with recessed stainless steel sink and sink covers
Water filtration system
Shower with decorative surround, glass door, skylight and light
Porcelain toilet with foot flush
Recessed stainless-steel sink
Powered roof vent in bathroom with wall switch
Walk-around, king-size bed with power head lift, bedspread and nightstands
USB port and wireless charging in nightstands
Under-bed storage
LED HD Smart TV in bedroom
Large wardrobes
Bunks with industry-exclusive 300 lb. capacity each (37L)
Wall-mounted tablet holder in each bunk (37L)
Smoke alarm
Carbon monoxide detector

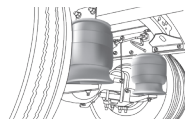
OPTIONS

Power theater seating (N/A 37K, STD on 37M)
Freestanding table with 4 chairs (N/A 37L)
15 cu. ft. 12V refrigerator
Combination washer/dryer (N/A 37K)
Stackable washer/dryer (37K)
Hide-a-bed sofa (37M)
Canadian Shaw® TRAV'LER® satellite dish
Winegard® TRAV'LER® satellite dish - DIRECTV®
Slide-out tray with 12V refrigerator cooler in basement



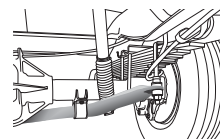
COMPUTER-BALANCED DRIVESHAFT

Ensures smooth and efficient power transfer to the wheels



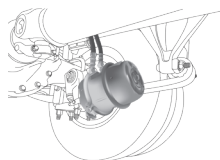
REAR AIR SUSPENSION

Softens ride and improves handling



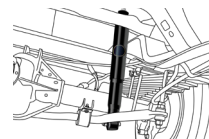
HEAVY-DUTY REAR STABILIZER BAR

A larger bar and polyurethane bushings, instead of rubber, transfer power faster for extra support, more stability and easier handling



FULL AIR BRAKES

Deliver robust stopping power, even on grades



SACHS SHOCKS ABSORBERS

Large diameter tube design pairs gas and hydraulics to resist heat and pressure while independently adjusting to changing road conditions

FLOORPLAN	GVWR (lbs.)	GCWR (lbs.)	WHEEL BASE	OVERALL LENGTH	EXTERIOR HEIGHT WITH SATELLITE AND A/C	EXTERIOR WIDTH	INTERIOR HEIGHT	FRESH WATER CAPACITY (gal.)	GRAY WASTE WATER CAPACITY (gal.)	BLACK WASTE WATER CAPACITY (gal.)
37K	31,000	43,000	279"	39' 4"	13' 4"	101"	84"	72	51/40	40/23
37L	31,000	43,000	279"	39' 4"	13' 4"	101"	84"	72	50/31	50
37M	31,000	43,000	279"	39' 4"	13' 4"	101"	84"	72	50/31	50