

# CRUISER & CRUISER CTX

Travel Trailer and Fifth Wheel Floor Plans



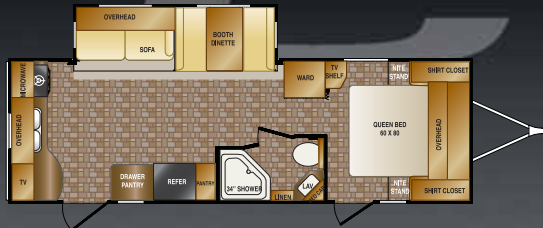
CRUISER & CRUISER  
CTX

CROSSROADS  
Recreational Vehicles

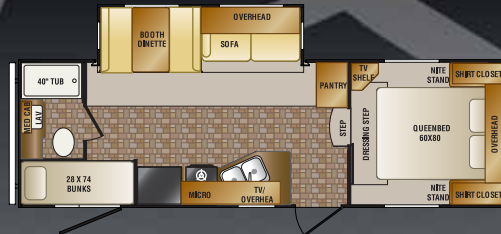
CROSSROADS  
Recreational Vehicles

# CRUISER CTX TRAILERS AND FIFTH WHEELS

CT26RKX

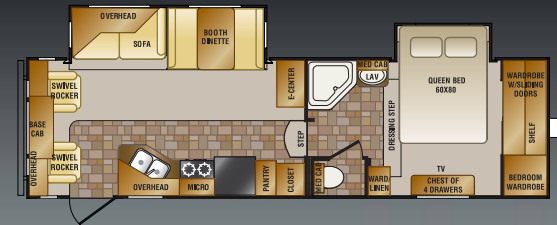


CF25RBX

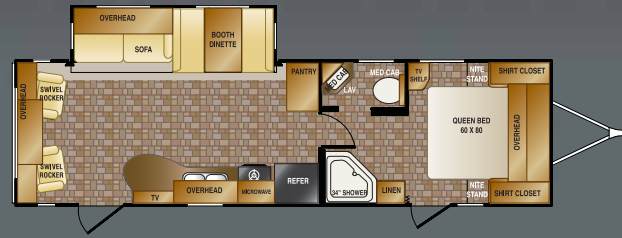


# CRUISER FIFTH WHEELS

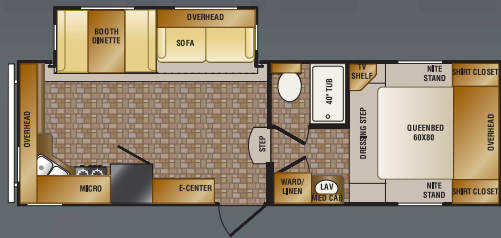
CF28RL



CT29RLX



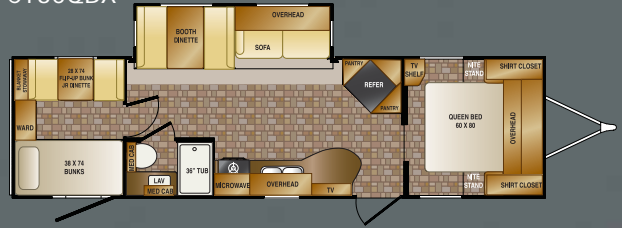
CF26RKX



CF30ES



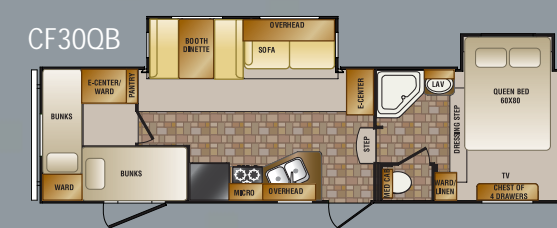
CT30QBX



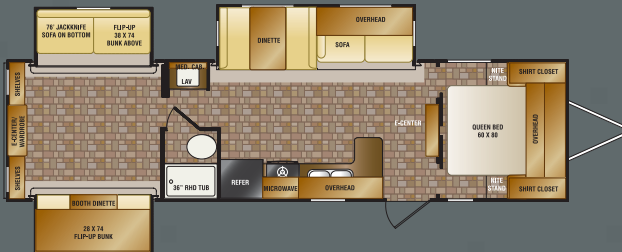
CF26ULX



CF30QB



CT32KSX



CF27RLX



CF29BHX

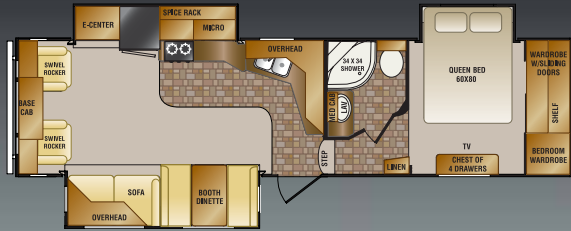


## Specifications

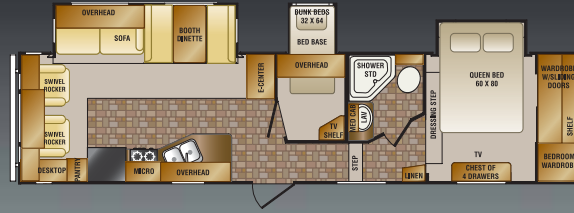
	CT26RKX	CT29RLX	CT30QBX	CT32KSX	CF25RBX	CF26RKX	CF26ULX	CF27RLX	CF29BHX	CF28RL
Dry Weight	6012	6868	6874	8038	6539	6762	6692	7102	7972	7617
Carrying Capacity	4640	3762	3680	2594	4734	4405	4477	4075	3141	3921
Hitch Weight	860	838	762	845	1642	1536	1538	1546	1482	1667
Axle Weight	5152	6030	6112	7193	4897	5226	5154	5556	6490	5961
Exterior Length	29' 7"	33' 5"	34' 2"	35' 11"	27' 3"	27' 6"	27' 11"	29' 5"	30' 11"	30' 11"
Exterior Height with A/C	11' 0"	11' 0"	11' 0"	11' 2"	11' 11"	11' 10"	11' 10"	11' 8"	11' 8"	11' 8"

**Tanks** • Fresh water capacity: 58 gallons • Black water capacity: 40 gallons • Grey/galley capacity: 80 gallons (40 gallons on 26ULX, 29RLX, 30QBX, 32KSX)

CF30SK



CF32BL

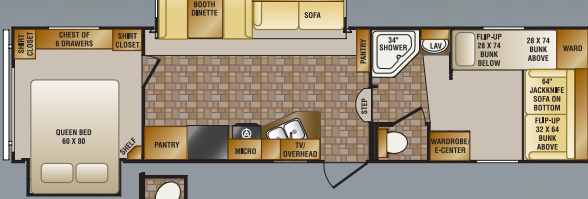


**CRUISER PATRIOT/PROVINCIAL**  
Flush Floor Bedrooms

CF285RL

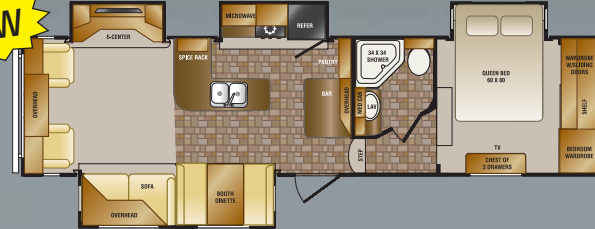


CF310B

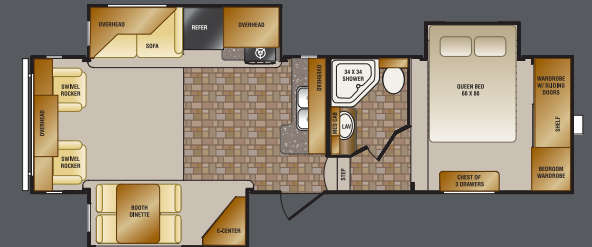


CF32CK

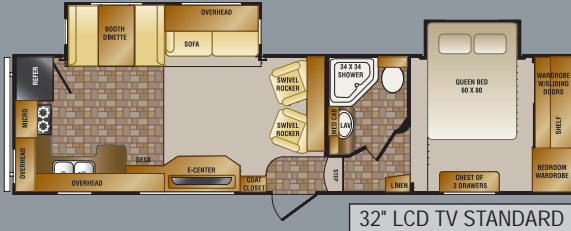
**NEW**



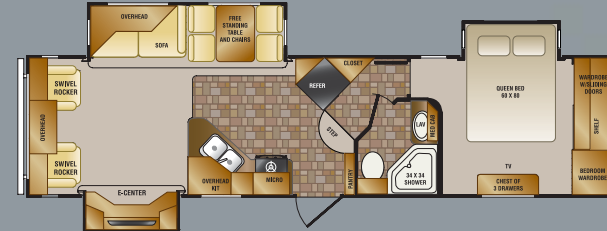
CF305ES



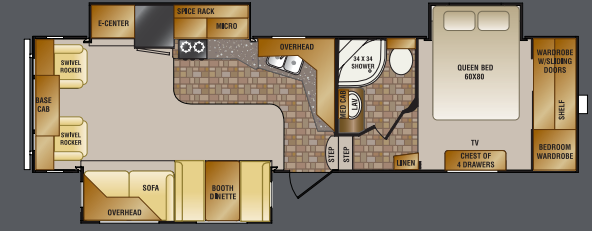
CF31RK



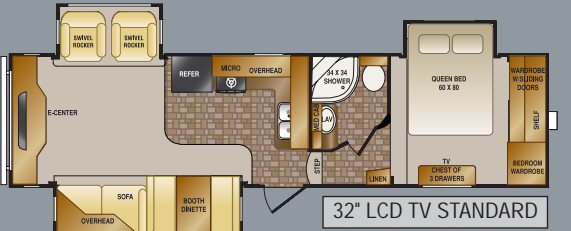
CF32MK



CF305SK



CF31RE



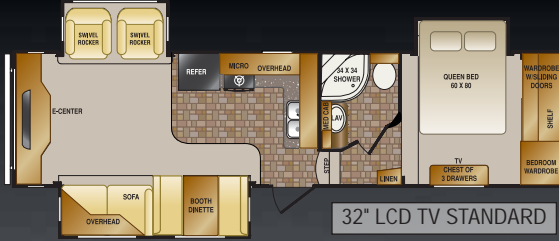
CF33LF



(Fifth Wheel Lofted Model)

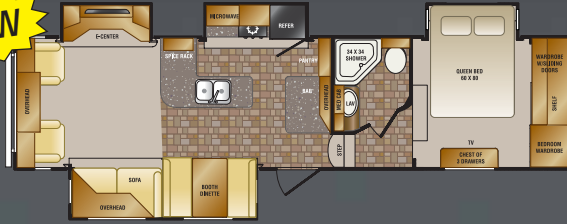
Model	CF30ES	CF300B	CF30SK	CF310B	CF31RK	CF31RE	CF32BL	CF32CK	CF32MK	CF33LF	CF285RL	CF305ES
Length	8568	8035	8211	7930	7981	7969	8556	8847	8532	9117	7800	8500
Width	3089	3118	3533	3403	3691	3523	3787	3200	2758	3460	4256	3900
Height	1786	1815	1697	1743	1740	1633	1885	1885	1734	2121	1656	1500
Area	6782	6753	6338	6468	6180	6348	6084	6671	7113	6411	6144	7000
Interior Length	32' 2"	34' 3"	32' 10"	34' 11"	32' 11"	32' 11"	34' 11"	33' 11"	33' 11"	34' 11"	30' 11"	32' 10"
Interior Width	11' 10"	12' 4"	11' 10"	12' 2"	11' 8"	11' 8"	12' 7"	12' 7"	12' 2"	12' 7"	12' 6"	12' 6"

### CF315RE



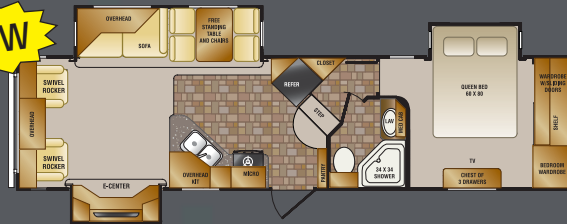
### CF325CK

**NEW**



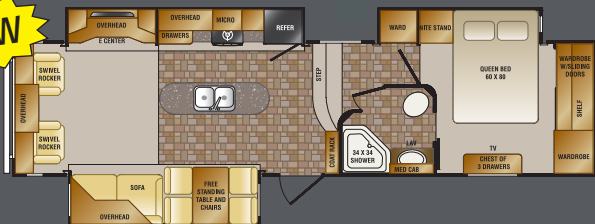
### CF325MK

**NEW**



### CF335SS

**NEW**



**CRUISER & CRUISER CITY**

CF305SK	CF315RE	CF325CK	CF325MK	CF335SS
8500	9372	9798	9180	9000
3500	2874	2684	4620	3400
1600	1846	2082	1800	1800
6900	7526	7716	7380	7200
32' 10"	32' 11"	33' 11"	33' 11"	33' 11"
12' 6"	12' 6"	12' 6"	12' 6"	12' 6"



\*R-values based with POLARTEC upgrade insulation package. All R-values are approximated using industry resources and are subject to change without notice.



(CTX models only)



Thor Industries' strong financial position and industry leadership are your assurance that we will be here to serve you for years to come.



The company conserving today to protect tomorrow.



your local dealer



888-226-7496  
www.crossroadsrv.com

Dry & hitch weight based on standard equipment only. Carrying capacity reduced to reflect maximum available options per unit. Standards, options & specifications subject to change without notice. 11/10 © 2010 CrossRoads RV

## CONSTRUCTION STANDARDS

1. One-piece, rolled-edge rubber roof with 12 year warranty
2. 3/8" Plywood roof decking
3. 16" OC Aluminum truss roof rafters and tube floor joists
4. R-27 Fiberglass roof and R-28 floor insulation\*
5. Aluminum radius roof transition wrap
6. Full fiberglass front cap
7. 13,500 BTU ducted A/C • 30,000 BTU floor ducted furnace
8. Aluminum tube 16" OC studs for sidewalls, endwalls and slide rooms
9. Thermo-Foil (PolarTec Upgrade Insulation Package - optional)
10. R-15 Sidewall fiberglass insulation\*
11. 2 Layers of Luan board - staggered for seamless walls
12. Lamilux fiberglass exterior for easy maintenance
13. 8" Steel I-beam frame or 10" Steel I-beam frame (varies by floor plan)
14. 5/8" Lightweight tongue and groove plywood floor decking
15. Residential grade carpet with 1/2" foam carpet pad
16. Linoleum bathroom floor
17. Power front jacks
18. Electric slide system(s) with individual room controls
19. Tires with white spoked rims (aluminum option shown)
20. 5,200 lb Axles
21. Fully enclosed, insulated underbelly with radiant heat

## EXTERIOR STANDARDS

22. Tinted glass windows
23. Scare light
24. Extended pin box shown with optional hitch cover
25. Swing-out entry assist handle
26. Roof ladder
27. Extra large capacity cargo storage
28. Sunchaser patio awning
29. 30" Radius entry door with screen
30. Triple entry step
31. Dual 30 lb LP tanks
32. Aluminum bumper cover
33. Slam latch baggage door

EZ lube hubs

Black tank flush

Enclosed gate valves