

Sunova

WINNEBAGO[®]



Why Sunova?

- Four contemporary floorplans
- Swivel Ultraleather™ cab seats
- Corian® countertops
- MCD solar/blackout roller shades (in select areas)
- Available powered StudioLoft™ drop-down bed
- Standard electric fireplace (35G, 36Z)
- Choice of queen or king bed (30A queen only)
- Leveling jacks with 3-position controls
- Powered patio awning with LED lighting and metal wrap



On the Cover: 33C Black Garnet Full-Body Paint

33C Falling Star with Coffee-Glazed Honey Cherry Cabinetry

Legendary Motorhome Value

The question for motorhome enthusiasts looking for a truly exceptional Class A coach is not “Should I buy a Sunova®?” But, rather, “Which Sunova should I choose?” With four distinct models, including the spacious 35G with inLounge™ extendable sectional sofa and movable inTable™, there’s a Sunova that’s perfect for you and your family. Popular

features such as LED lighting, Corian® countertops, and MCD solar/blackout roller shades in select areas make it easy to call the Sunova home. Choose the available powered StudioLoft™ drop-down cab bed for even more travel flexibility. Add in Winnebago’s® legendary construction quality and your decision is even easier—it’s the Sunova.



Recognized Quality The Recreation Vehicle Dealer Association annually rates RV manufacturers and awards the Quality Circle Award to manufacturers that provide exceptional products, service, and support. Winnebago is proud to be the only manufacturer that has received this award every year since its inception.

Best in Class

See how Winnebago takes motorhome design and function to the next level, and why we've earned the right to be called the Most Recognized Name in Motorhomes.®



Click on this icon throughout the brochure to link to more information on the web.



You can bring all your favorite belongings along with the **Exterior Storage Compartments** that utilize the Smart Storage™ and StoreMore® (33C) philosophies. Access your gear easily from the lighted, weatherproof bins.



Goltasca.com



Day or night, the smoothly-retracting **MCD Solar/Blackout Roller Shades** in select areas give you total control over light and privacy levels.



The innovative **Glide and Dine™** table (33C) easily extends and glides to the left or right for maximum dining comfort and usability. The attached buffet boasts a retractable HDTV.



Sit back and relax after a long day in the available Ultraleather™ **Euro Recliner** with a built-in footrest. The hoop base lets you move it to your favorite spot when parked.

With four unique floorplans, the Sunova has something for everyone. From the Extendable U-Shaped Dinette Sectional (30A), to the available Rest Easy® sofa (33C), or the inLounge™ with a comforting electric fireplace (35G, 36Z), the lounge offers many popular features, fit for both an afternoon of quiet reading or lively entertaining. At the end of a long day, unwind in front of an HDTV that is connected to a DVD stereo system.





33C Galley

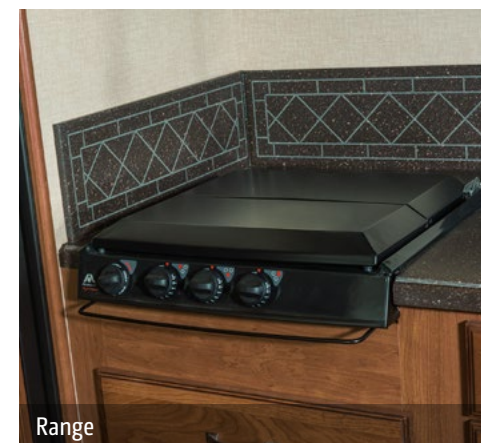
This full-featured galley makes meal and snack preparation easy with popular amenities such as a three-burner range top, a microwave/convection oven, and a large, four-door refrigerator/freezer with an icemaker (two-door on 30A and residential refrigerator on 36Z). The Corian® solid-surface countertops and matching sink covers offer plenty of preparation space, while the pantry (NA 35G) and full-extension drawer slides provide an abundance of additional storage space. There's even a decorative galley backsplash for added style.



33C Refrigerator/Freezer



Microwave/Convection Oven



Range



33C Flip-Up Countertop Extension



33C Glide and Dine Dining Table and Chairs

The Sunova offers a variety of dining configurations in each floorplan to suit your individual style including an Extendable U-Shaped Dinette (30A) or a BenchMark® dinette (36Z). The 33C features an extendable Glide and Dine™ dining table/buffet and chairs with a retractable HDTV, and the 35G comes complete with a movable inTable™ and extendable inLounge® to seat eight.



Glide and Dine Table Extended



Glide and Dine Buffet with TV Retracted



33C Bedroom

You'll enjoy the standard HDTV that's connected to the coach DVD system while lounging on the walk-around queen or available king bed (30A queen only). A chest of drawers in select models and spacious wardrobe with additional storage provide plenty of space for all of your traveling necessities.



33C Bedroom HDTV



33C Bathroom



Dash

Enjoy confidence on the road in the Sunova thanks to the easy-to-read controls, rearview color monitor system with 6" touchscreen, and the six-way power Ultraleather™ driver seat. Your co-pilot will appreciate the additional space provided by the dash workstation, and you'll both enjoy hours of entertainment with the iPod®/MP3 input and available SiriusXM™ satellite radio (subscription not included). Both cab seats swivel to face the lounge area, creating a more comfortable living space.



SiriusXM Satellite Radio



Cab Seats



Dash Workstation

Outdoor relaxation is just as enjoyable with the powered patio awning with LED lighting and the available exterior entertainment center with an HDTV. The StoreMore® slideout storage system featured on the 33C makes accessing your gear easy, while the single-paddle latches on the doors allow for easy, one-handed operation. A color-coded exterior service center and automatic hydraulic leveling jacks with three-position controls make hookups quick and convenient.



Powered Patio Awning with LED Lighting



Exterior Wash Station



Stylized Aluminum Wheels



Available Exterior Entertainment Center



Fiberglass Roof

The crowned, one-piece fiberglass roof is backed by a 10-year limited parts-and-labor roof skin warranty.

Rubber Can't Cut It

Rubber roofs used by competitors can streak and degrade over time.

Thermo-Panel® Sidewalls

By layering fiberglass and high-density block foam insulation with welded aluminum support structures, we create some of the industry's strongest, most durable and lightweight sidewalls.

E-Coating An electrodeposition coating helps protect critical steel components.

Embedded Steel Metal substructures embedded into the sidewall provide solid attachment points to keep cabinets and appliances mounted securely in place.

Solid Framework Aluminum extruded in our own facility to our exacting standards creates an extremely strong and solid structural framework.

Laser-Cut Tubing

Precision laser cutters create precise joints in structural steel that are stronger and require less welding.



Interlocking Joints

Specially engineered interlocking joints connect the floor, sidewalls and roof where competitors often rely on simple screws to bear the weight.



SUPER STRUCTURE®

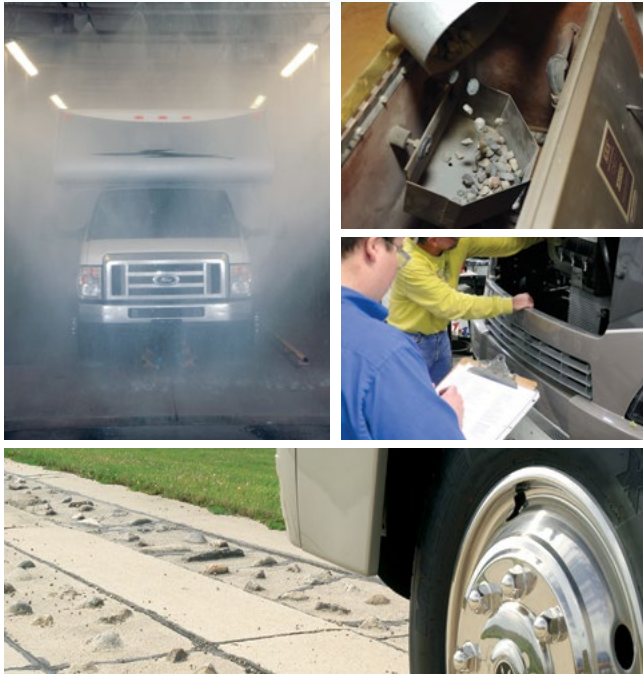
BUILT TO LAST

Every coach—from our smallest Class C to our largest diesel-pusher model—is built to Winnebago's® legendary SuperStructure® construction standards. It's a process developed and refined over more than 50 years of building some of the strongest, most durable coaches in the industry.



TESTING

Before rolling out of our factories, every coach undergoes an extensive 113-point inspection. Each coach also passes a high-pressure water test that simulates rain at a rate of 50-inches per hour to check for leaks. During the design process, our computer simulations, physical testing center, and rigorous test track ensure each model is built to last.



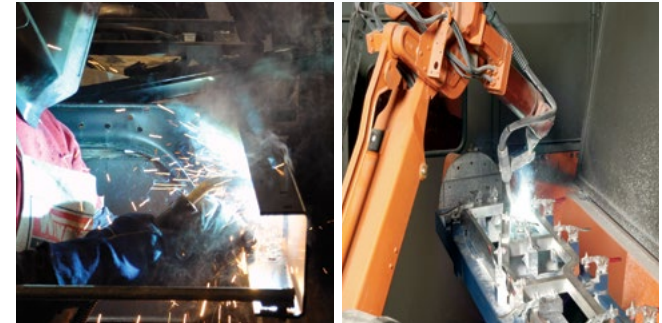
DETAILS

At Winnebago, we treat the features you can't see with the same care as the ones you can. Look in the access panels of some of our competitors' coaches and you'll see loose insulation and wires haphazardly strewn about. Winnebago maintains a clean fit and finish throughout so your coach will last for the long haul.



BUILT IN-HOUSE

We extrude our own aluminum. We rotocast our own plastic components. In fact, we manufacture most of our own parts so they are designed to fit the space, rather than fitting the space to an awkward off-the-shelf component size.



**SUPER
STRUCTURE**
BUILT TO LAST



Visit BetterBuiltRVs.com to gain real insight into what goes into a Winnebago motorhome.

TAKE A TOUR

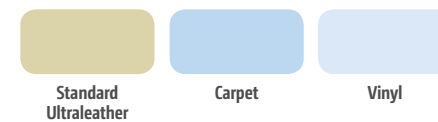
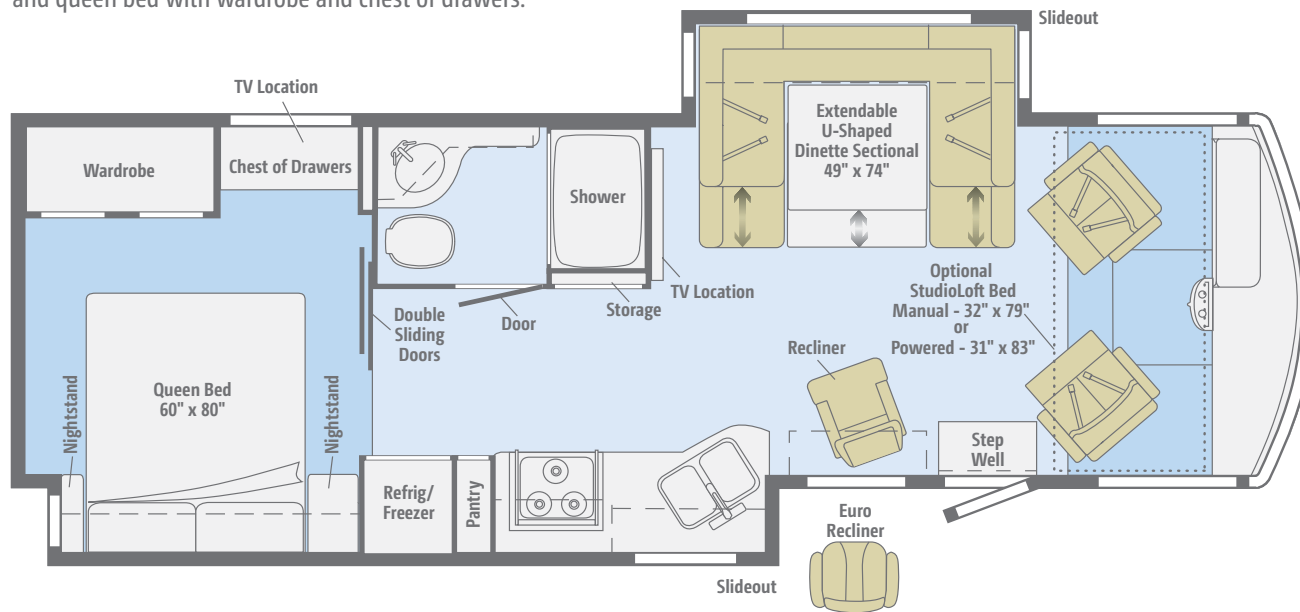
We're proud of our processes, state-of-the-art facilities, and the people who make Winnebago number one. We invite you to visit our complex in Forest City, Iowa, for a firsthand look at the dedication and technology behind every motorhome we build.



Goltasca.com

30A

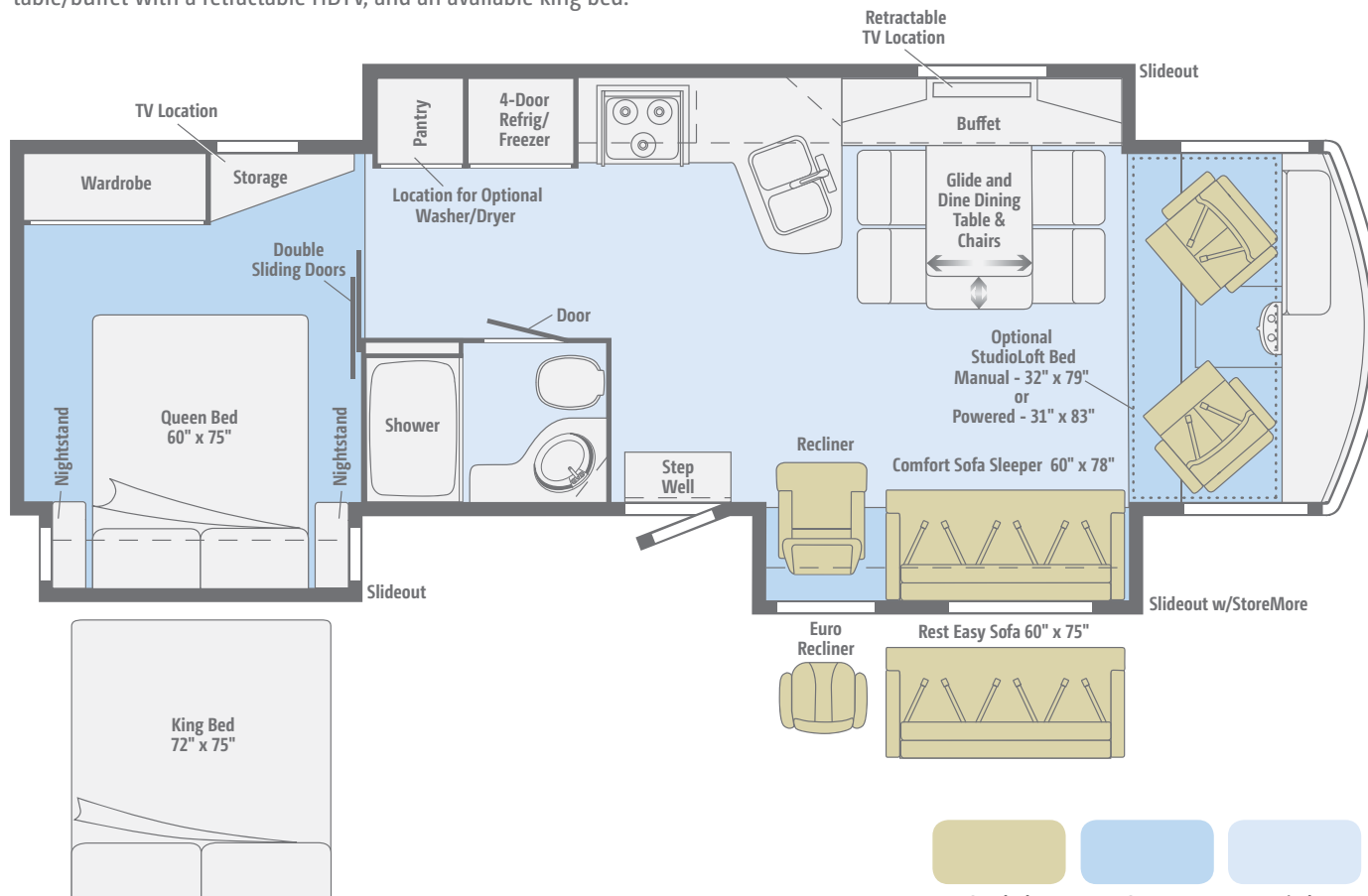
This dual-slideout floorplan offers comfortable living spaces with the Extendable U-Shaped Dinette Sectional, mid-coach HDTV, available Euro recliner, and queen bed with wardrobe and chest of drawers.



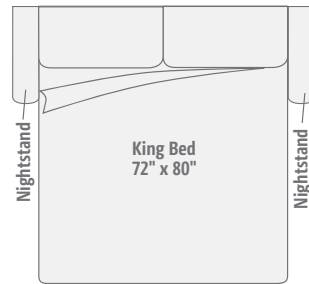
Dimensions shown are for sleeping space only and may vary due to styling differences. Dashed lines denote overhead storage areas. Floorplans and specifications are also available online at Goltasca.com.

33C

Popular features abound in this triple-slideout floorplan, including an available Euro recliner, available Rest Easy® sofa, a Glide and Dine table/buffet with a retractable HDTV, and an available king bed.

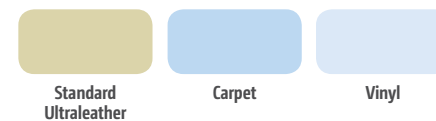
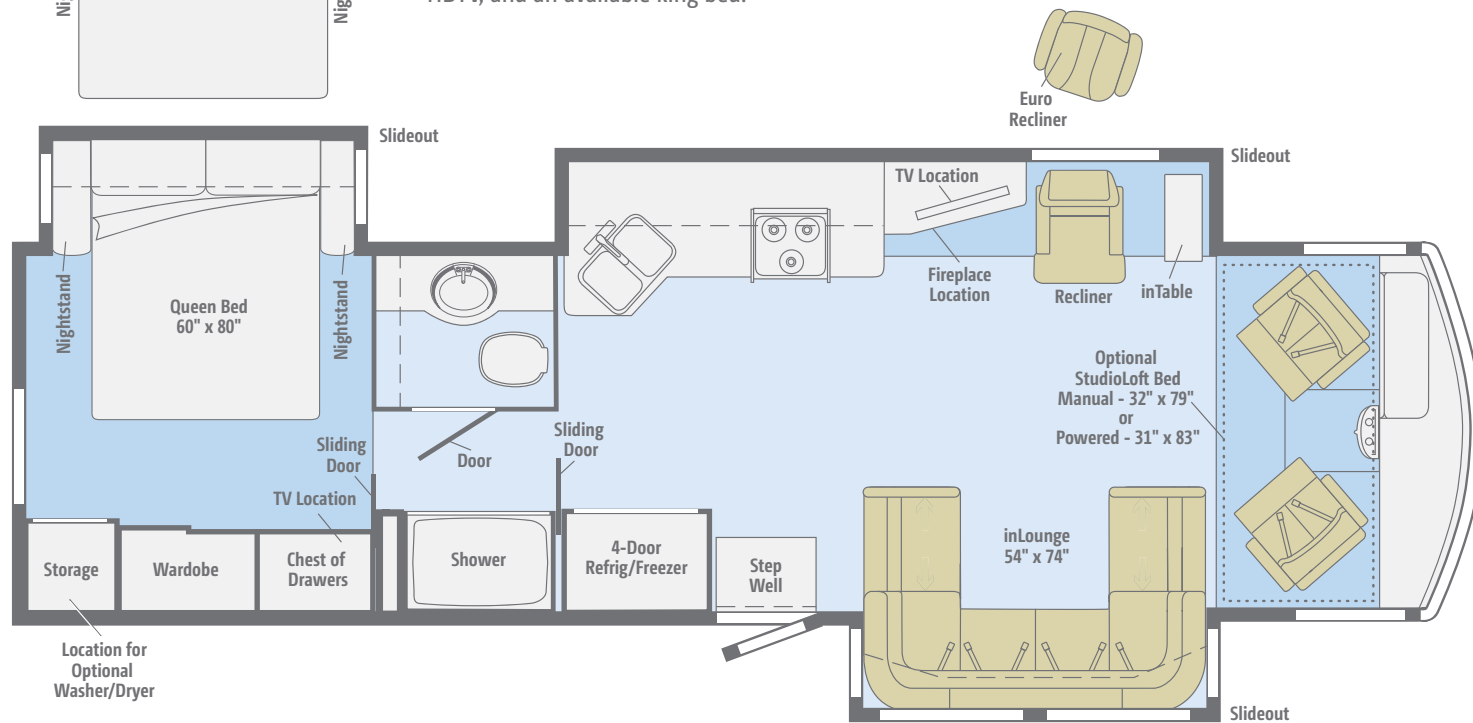


Dimensions shown are for sleeping space only and may vary due to styling differences. Dashed lines denote overhead storage areas. Floorplans and specifications are also available online at Goltasca.com.

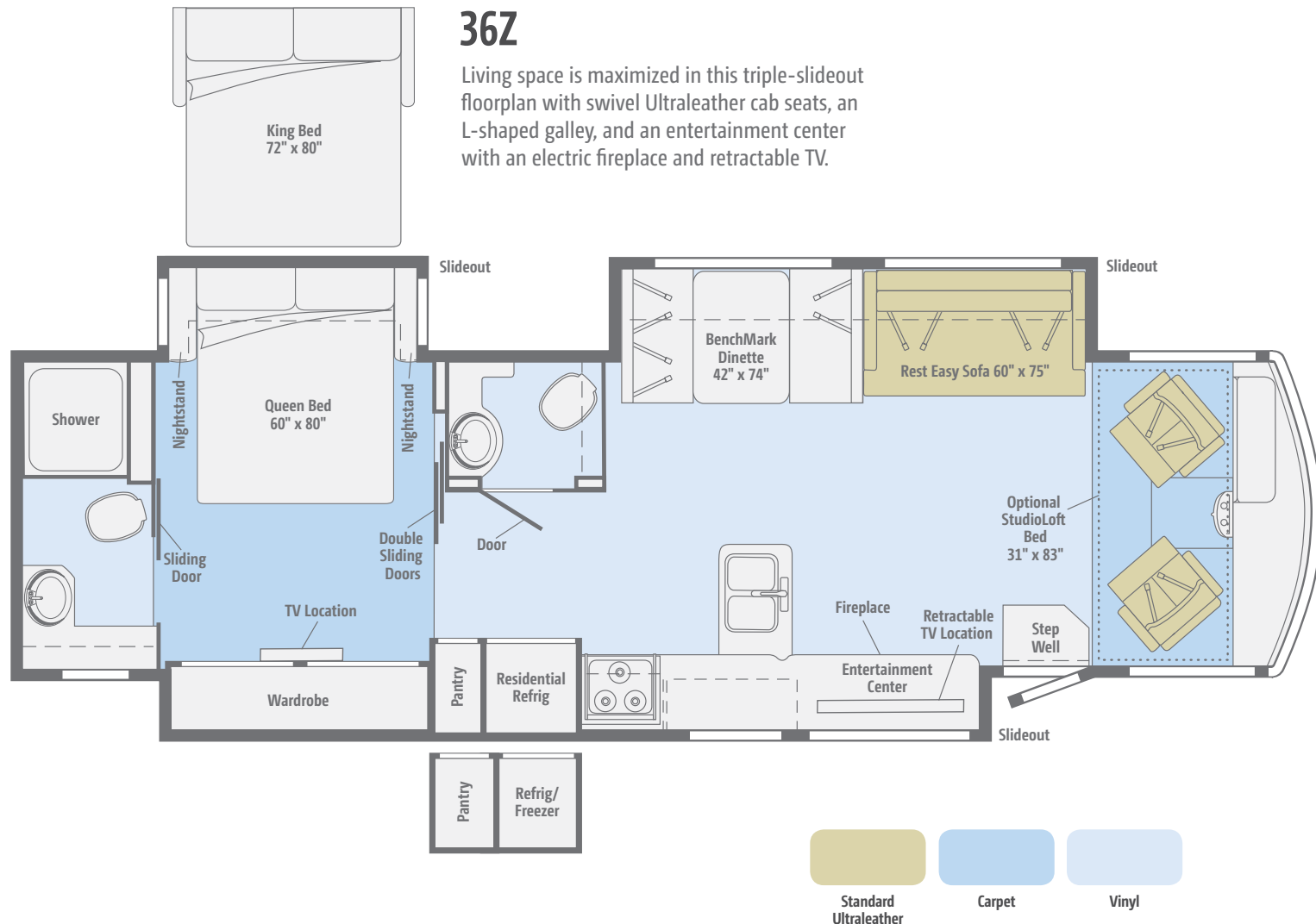


35G

Functional amenities in this spacious, triple-slideout floorplan include an inLounge™ extendable sofa/sleeper with movable inTable™, an electric fireplace, mid-coach HDTV, and an available king bed.



Dimensions shown are for sleeping space only and may vary due to styling differences. Dashed lines denote overhead storage areas. Floorplans and specifications are also available online at Goltasca.com.



Dimensions shown are for sleeping space only and may vary due to styling differences. Dashed lines denote overhead storage areas. Floorplans and specifications are also available online at Goltasca.com.

Choose from three fabric collections and three wood finishes.

Monument



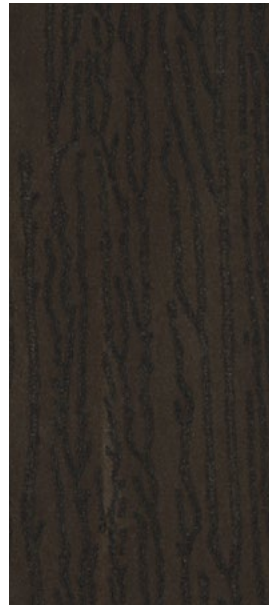
Ultraleather



Main



Accent



Bedspread



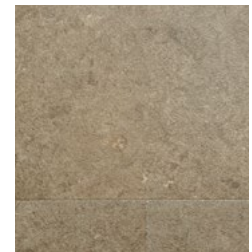
Corian Countertop
(Galley)



Wall Board



Carpet



Vinyl



Forest Cherry



Coffee-Glazed
Vienna Maple



Coffee-Glazed
Honey Cherry

Winnebago reserves the right to change décor materials and specifications without notice or obligation.

Choose from three fabric collections and three wood finishes.

Falling Star



Ultraleather



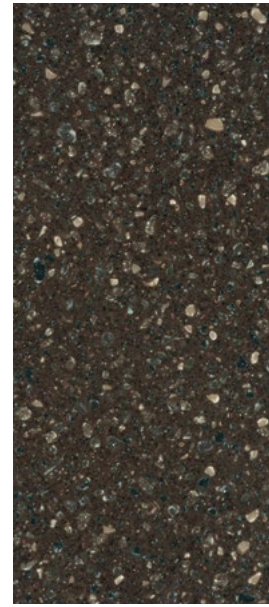
Main



Accent



Bedspread



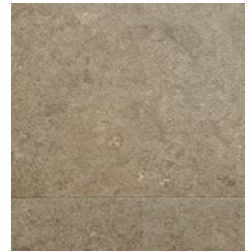
Corian Countertop
(Galley)



Wall Board



Carpet



Vinyl



Forest Cherry



Coffee-Glazed
Vienna Maple



Coffee-Glazed
Honey Cherry

Winnebago reserves the right to change décor materials and specifications without notice or obligation.

Choose from three fabric collections and three wood finishes.

Biscotti



Ultraleather



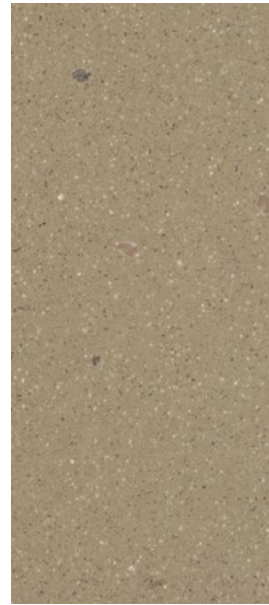
Main



Accent



Bedspread



Corian Countertop
(Galley)



Wall Board



Carpet



Vinyl



Forest Cherry



Coffee-Glazed
Vienna Maple



Coffee-Glazed
Honey Cherry

Winnebago reserves the right to change décor materials and specifications without notice or obligation.

Choose from four stylish full-body paint selections.



Cloud
FULL-BODY PAINT



Denim
FULL-BODY PAINT

Choose from four stylish full-body paint selections.



Black Garnet
FULL-BODY PAINT



Black Mist
FULL-BODY PAINT

Weights & Measures

	30A	33C	35G	36Z
Length	31'2"	34'8"	36'5"	37'6"
Exterior Height ¹	12'5"	12'5"	12'4"	12'5"
Exterior Width ²	8'5.5"	8'5.5"	8'5.5"	8'5.5"
Exterior Storage ³ (cu. ft.)	90.5	104	115.8	122.2
Awning Length - Front/Rear	15'6'	19'	18'	20'
Interior Height	6'8"	6'8"	6'8"	6'8"
Interior Width	8'0.5"	8'0.5"	8'0.5"	8'0.5"
Freshwater Tank Capacity ⁴ (gal.)	80	73	80	83
Water Heater Capacity (gal.)	6	10	10	10
Holding Tank Capacity - Black/Gray ⁴ (gal.)	38/53	39/60	38/50	33/41 & 47/44*
LP Capacity ⁵ (gal.)	18	18	18	18
Fuel Capacity (gal.)	80	80	80	80
GCWR ⁶ (lbs.)	26,000	26,000	26,000	26,000
GVWR (lbs.)	22,000	22,000	22,000	22,000
GAWR - Front (lbs.)	8,000	8,000	8,000	8,000
GAWR - Rear (lbs.)	15,000	15,000	15,000	15,000
Wheelbase	190"	220"	228"	242"

* The 36Z uses separate black and gray tanks for each bathroom

Ford® F53 Chassis

362-hp 6.8L Triton® V10 SEFI engine, TorqShift™
5-speed automatic transmission w/tow/haul,
Hydro-Max power brakes, 4-wheel ABS, 175-amp.
alternator
7-pin trailer wiring
Trailer Hitch⁶ 5,000-lb. drawbar/500-lb. maximum
vertical tongue weight
Hydraulic leveling jacks w/3-position controls
Stylized aluminum wheels



Ford F53 Chassis

Cab Conveniences

Cab seats hinged armrests, fixed lumbar support, and multi-adjustable slide/recline/swivel
6-way power driver seat
3-point seat belts
Radio/Rearview Monitor System 6" LCD color touch screen, remote, iPod®/MP3 input, rear color camera
Chassis/house battery radio power switch
Power steering w/tilt wheel
12-volt powerpoint
Cruise control
Power mirrors w/defrost and sideview cameras
Map lights
MCD solar/blackout powered front shade
Solar shades and privacy curtains for driver and passenger windows
Defroster fans
Dash workstation
OPTIONAL EQUIPMENT
Passenger seat w/footrest
SiriusXM™ receiver (subscription not included), remote, iPod interface connector

Interior

Glide and Dine table/buffet/chairs w/retractable 48" HDTV (33C)
46" HDTV mounted to a locking extendable slide system (mid-coach 30A)
48" HDTV (35G)
50" HDTV (36Z)
Amplified digital HDTV antenna system
Electric fireplace (35G, 36Z)
LED ceiling lights
Satellite system ready (lounge and bedroom)
Soft vinyl ceiling
MCD solar/blackout roller shades (on select windows)
OnePlace® systems center
Tinted, dual-glazed, thermo-insulated windows
Powered ventilator fan (bedroom 35G, 36Z)
Powered ventilator fan (lounge)
Powered roof vent (bath(s))
Video Selection System
Washer/dryer prep (33C, 35G)
OPTIONAL EQUIPMENT
Powered StudioLoft™ ladder, dome LED lights
Manual StudioLoft (NA 36Z)
Stackable washer/dryer (33C, 35G)
Winegard® Mission® automatic satellite TV antenna system
Home Theater Sound System amplifier, DVD player, receiver, speakers, and subwoofer
Vinyl floor covering throughout (cab area and slideouts carpeted)
48" HDTV mounted to a locking extendable slide system (mid-coach 30A)

Galley

Corian® solid-surface countertop, decorative backsplash, and sink covers

Microwave/convection oven w/vented range fan

3-burner range top w/cover and storage below

Flip-up countertop extension (33C)

2-door residential refrigerator/freezer w/icemaker (36Z)

Large-capacity 2-door refrigerator/freezer w/icemaker (30A)

4-door refrigerator/freezer w/icemaker (33C, 35G)

OPTIONAL EQUIPMENT

3-burner range w/cover and oven

Large-capacity 2-door refrigerator/freezer w/icemaker water filter, 2 Group 31 batteries (36Z)

Bath

Laminate countertop

Flexible showerhead

Textured glass shower door

Skylight

Porcelain toilet w/foot pedal and sprayer

Water pump switch(es)

Bedroom

Queen bed w/innerspring mattress and storage below (30A, 33C, 36Z)

Powered queen bed w/Ideal Rest® Nouveau digital comfort control mattress w/remotes (35G)

Headboard

Bedsread, pillows, and shams

28" HDTV (30A, 33C, 35G)

32" HDTV (36Z)

OPTIONAL EQUIPMENT

Powered king bed w/Ideal Rest Nouveau digital comfort control mattress w/remotes (35G)

King Ideal Rest Nouveau digital comfort control mattress w/remotes (33C, 36Z)

King bed w/innerspring mattress and storage below (33C, 36Z)

Queen Ideal Rest Nouveau digital comfort control mattress w/remotes (30A, 33C, 36Z)

Exterior

Automatic entrance door steps

Porch light (NA 36Z)

Lighted storage compartments

Premium high-gloss fiberglass skin

KeyOne™ lock system

Front mud flaps

Ladder

Powered patio awning w/LED lighting and metal wrap

Additional powered patio awning w/LED lighting and metal wrap (above entrance door 30A)

Powered entrance awning w/LED lighting (36Z)

Lower front protective mask

OPTIONAL EQUIPMENT

Entertainment Center 32" HDTV w/adjustable bracket, AM/FM stereo, CD/DVD, remote, 2 speakers

Heating & Cooling System

2 high-efficiency air conditioner heat pumps w/Energy Management System w/ChillGrille™

35,000 BTU low-profile ducted furnace (30A, 33C)

40,000 BTU low-profile ducted furnace (35G, 36Z)

Electrical System

AC/DC electrical distribution system

45-amp. converter/charger (30A, 33C, 35G)

50-amp. power cord

5,500-watt Cummins Onan® Marquis Gold™ gas generator

Automatic generator start system (36Z)

Generator/shoreline automatic changeover switch

2 deep-cycle, Group 31 Marine/RV batteries (30A, 33C, 35G)

4 deep-cycle, Group 31 Marine/RV batteries (36Z)

Battery disconnect systems (coach and chassis)

PowerLine® Energy Management System

Automatic dual-battery charge control

Auxiliary start circuit

Exterior antenna jack and AC duplex receptacle

1,000-watt inverter (30A, 33C, 35G)

2,000-watt inverter/charger (36Z)

Cable TV input

Portable satellite dish hookup

Plumbing System

Service center color-coded labels, pressurized city water hookup w/diverter valve, drainage valve, 10' sewer hose, QuickPort® service connection hatch, exterior wash station w/lighted pump switch

Permanent-mount LP tank w/gauge

On-demand water pump

TrueLevel™ holding tank monitoring system

Winterization Package water heater bypass valve and siphon tube

Heated holding tank compartment

6-gallon 110-volt/LP water heater w/motoraid/auto heater (30A)

10-gallon 110-volt/LP water heater w/motoraid/auto heater (33C, 35G, 36Z)

Gravity water tank fill w/lockable door

Holding tank flushing system (black tank only)

LPG accessory connection (patio area)

Safety

Child seat tether anchor in forward-facing dinette seat (30A, 36Z)

LP, smoke, and carbon monoxide detectors

10 BC fire extinguisher

Ground fault interrupter

High-mount brake lamp

Warranty⁷

12-month/15,000-mile basic limited warranty⁸

36-month/36,000-mile limited warranty on structure⁸

10-year limited parts-and-labor warranty on roof skin⁸

FOOTNOTES

¹ The height of each model is measured to the top of the tallest standard feature and is based on the curb weight of a typically equipped unit. The actual height of your vehicle may vary by several inches depending on chassis or equipment variations. Please check with your dealer for further information.

² The floorplans feature a wide-body design – over 96". In making your purchase decision, you should be aware that some states restrict access on some or all state roads to 96" in body width. Before making your purchase decision, you should confirm the road usage laws in the states of interest to you.

³ The load capacity of your motorhome is designated by weight, not by volume, so you cannot necessarily use all available space when loading your motorhome.

⁴ Capacities are based on measurements prior to tank installation. Slight capacity variations can result due to installation applications.

⁵ Capacities shown are tank manufacturer's listed water capacity (W.C.). Actual filled LP capacity is 80% of listing due to overfilling prevention device on tank.

⁶ Actual towing capacity is dependent on your particular loading and towing circumstances which includes the GVWR, GAWR, and GCWR as well as adequate trailer brakes. Please refer to the Operator's Manual of your vehicle for further towing information.

⁷ See separate chassis warranty.

⁸ See your dealer for complete warranty information.

NA Not Available

Not all items available in combination. See dealer for details.

Winnebago's® continuing program of product improvement makes specifications, equipment, model availability, and prices subject to change without notice. Published content reflects the most current product information at time of printing. Please consult your dealer for individual vehicle features and specifications.



Goltasca.com Has All The Answers



Visit **Goltasca.com** on your computer, smartphone or tablet for the latest product information and updates.

go LIFE

Welcome to GoLife!

Visit our lifestyle blog for motorhome news, personal travelogues, and community stories.



WINNEBAGOLIFE.COM

PREFERRED CARE PROGRAM

We back our motorhomes with best-in-class support both before and after the sale:

- 12-month/15,000-mile basic limited warranty
- 36-month/36,000-mile limited warranty on structure
- 10-year limited parts-and-labor warranty on roof skin
- Complimentary 24-hour roadside assistance program



TRIPSAVER
FAST TRACK PARTS
WINNEBAGO

- TripSaver® Fast Track Parts guarantees that in-stock warranty parts ship directly to your dealer within 24 hours
- National dealer service network



**Premium
ROADSIDE ASSISTANCE**

For more information, visit us at
WGOService.com



WIT CLUB

Join the Club, Join the Fun

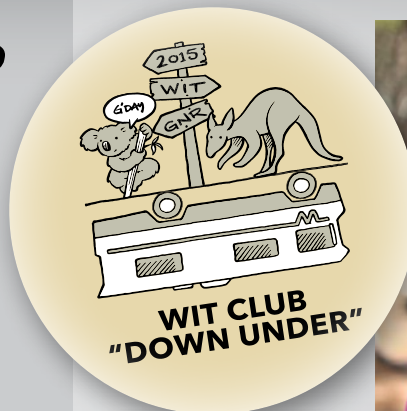
Here's the perfect way to begin your life on the road as the owner of a new Winnebago – by joining the exclusive WIT Club. Start your adventure with other fun-loving WIT Club members from across the country and get the most out of your new Winnebago motorhome.



Members enjoy:

- Caravans and rallies
- Newsletters
- Local and state group activities
- RV travel benefits

See more at **WITclub.com**



Grand National Rally

G'day mates! Explore the outback at this year's "Down Under" Grand National Rally. Each year, thousands of Winnebago owners descend upon the land down under – a.k.a. Forest City, Iowa.



Rally-goers enjoy an unforgettable week reconnecting with friends, taking tours, participating in activities, and more. Hop on down and join the adventure this July!