

WOLF PUP



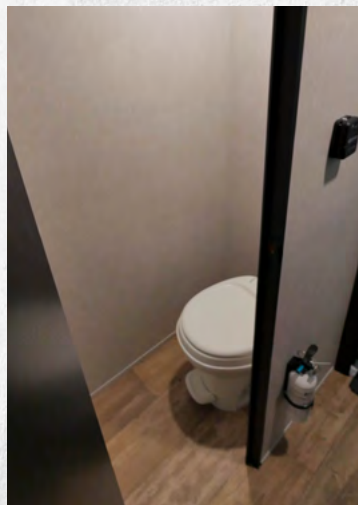
JOIN THE PACK.
TRAVEL TRAILERS

LIGHT & EASY.

The Forest River Cherokee Wolf Pup travel trailers are lightweight and easy to tow which makes them a great choice for any kind of traveling you want to do! With ample tank capacities and an abundance of storage, the Cherokee Wolf Pup is a step above its competition.







14CC

BEST OF BOTH WORLDS

INTERIOR / **GLACIER**

Weighing in under 3,000 pounds this 19' travel trailer packs a lot of features in a small space. The rear entry design creates a split bath that allows you to use bath facilities simultaneously. Despite the trailers size nothing is lost in the kitchen which features a flush mount glass cook top, huge sink, ample counter space, and a segment leading 10.3 cu.ft. double door refrigerator.



CLICK OR
SCAN FOR
FLOORPLAN
SHEET



16FQ

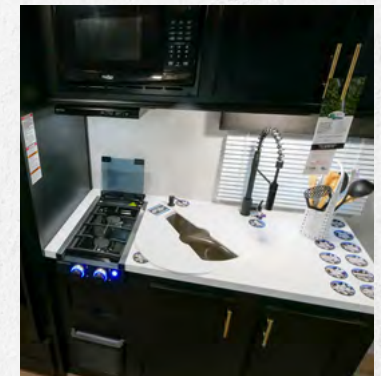
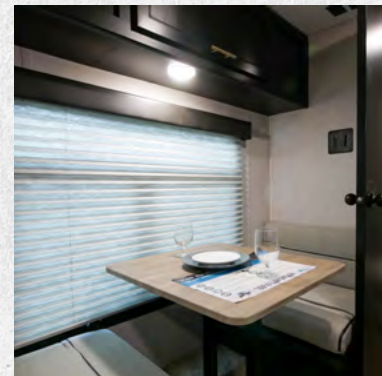
PERFECT FOR TWO

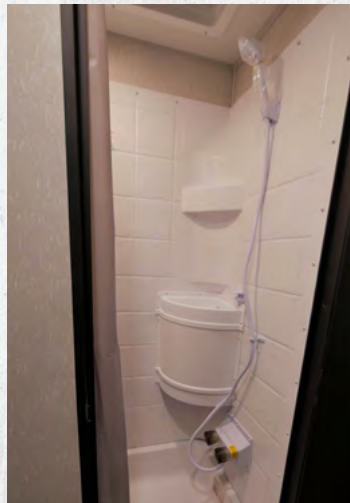
INTERIOR / GLACIER

The Cherokee Sleep System allows you to convert your bed to a comfortable sofa in seconds. The large kitchen boasts a flush mount glass cook top, huge sink, ample counter space, and 10.3 cu.ft. double door refrigerator. The rear bathroom showcases a large sink area with cabinet storage below. Exterior features include a full size power awning, outside mini kitchen, MORryde stable step, RVQ quick connect system, standard coach stabilizing system, and LED lighting.



CLICK OR
SCAN FOR
FLOORPLAN
SHEET





16HE

REAR GALLEY KITCHEN

INTERIOR / GLACIER

Plenty of storage space in this easy-to-tow travel trailer. The large rear galley kitchen at the entry of the trailer opens into a living area with overhead storage, dinette space for two, and jack-knife sofa. The dinette sits comfortably next to the large panoramic window looking onto your patio. A queen bed at the front of trailer features a full set of cabinets above. The exterior of the trailer has a full size power awning, RV quick connect, MORryde stable step, LED lighting, and much more.



CLICK OR
SCAN FOR
FLOORPLAN
SHEET



17JG

THE FAMILY CAMPER

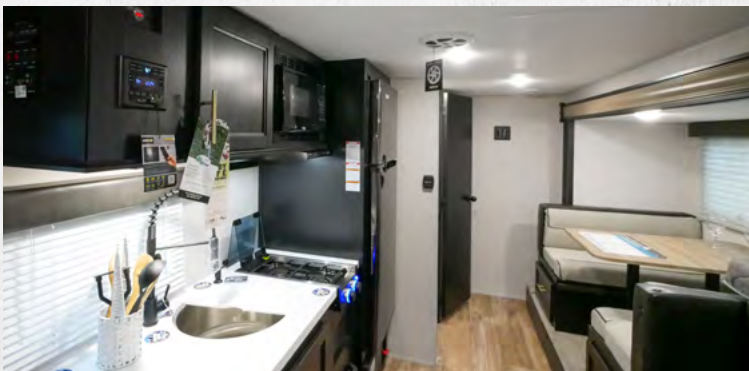
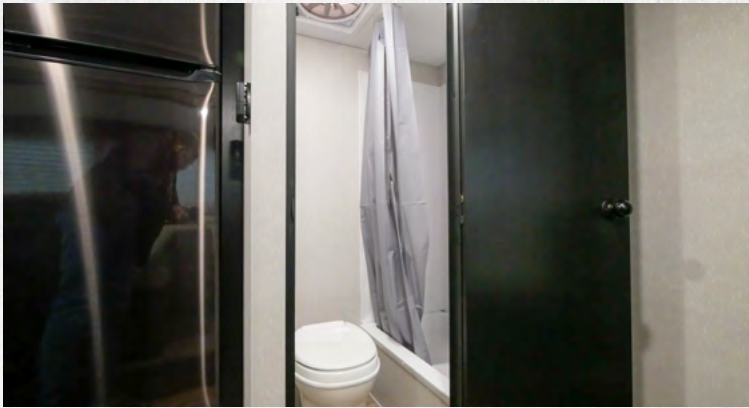
INTERIOR / GLACIER

The 17JG is the embodiment of the family camper. The large U-shaped dinette offers great seating, full-size pull-out drawers, as well as additional sleeping for two adults. The master queen bed offers comfort, while housing huge under bed storage. A functional modern chef's kitchen, and bathroom round out the interior of this class leading unit. The exterior under awning space provides ample entertaining space with the exclusive Pup kitchen, LED Power awning, exterior speakers, and TV bracket.



CLICK OR
SCAN FOR
FLOORPLAN
SHEET





18TO

THE HIDDEN BUNK PLAN

INTERIOR / GLACIER

The 18TO features a full slide-out with queen bed, dinette and sofa with hidden bunk functioning as a great camper for both couples and families sleeping up to six. Enjoy full under bed storage, large dinette drawers and overhead cabinetry. The rear TV placement provides viewing from the entire interior. Coupled with the gourmet kitchen, and functional bath, you have everything you need to enjoy a rainy day. Outside includes under awning entertainment with Pup Kitchen, and LP quick connect!



CLICK OR
SCAN FOR
FLOORPLAN
SHEET

ADVANTAGE PACKAGE

* Optional package. Not all items available on all models. See participating dealers for details.



14" Tires for improved towing in place of 13"



Outside Storage Door



Aerodynamic Smooth Radius Front Profile



Safe Ride Roadside Assistance



26" Wide Door IPO 22" Door



Exterior 110V Recept



High Impact Front metal IPO corrugated metal



Monitor Panel for Tanks and Battery Levels



Large Exterior Folding Assist Handle



Solar Prep and Wiring



TV Antenna with Hookups

CAMPING PACKAGE

* Optional package. Not all items available on all models. See participating dealers for details.



Foot Flush Toilet



55 AMP Converter



Large High Output Microwave



High Output Cooktop



Bathroom Fan



Full Length Awning



High Flo Water Pump



High Rise Faucet



Nitro Filled Tires



One-piece, Walkable Decked Roof



Oversized Dinette with Removable Table

SAFETY PACKAGE

* Optional package. Not all items available on all models. See participating dealers for details.



Carbon Monoxide Detector



Emergency Exit Windows



Fire Extinguisher



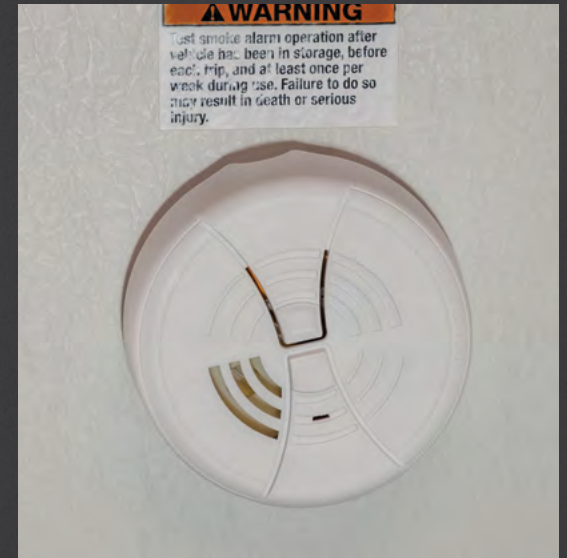
GFI Protective Outlet



LP Gas Detector



Safety Glass Windows



Smoke Detector

LIMITED PACKAGE

* Optional package. Not all items available on all models. See participating dealers for details.



Cannon™ 12V, High Efficiency, 11 Cubic Foot Residential Refrigerator with Travel Lock



13,500 BTU Air Conditioner



14" Premium Wheel Package



20,000 BTU Furnace



6 Gallon Gas/Electric DSI Water Heater



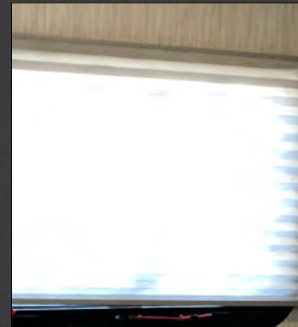
8" Ceiling Mounted, 200W Subwoofer with Accent Lighting



Four Stabilizer Jacks



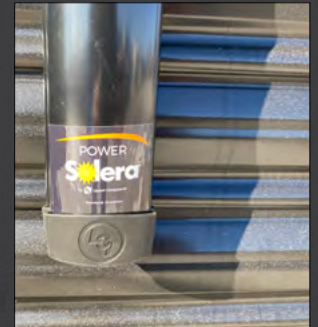
LED Interior Lights



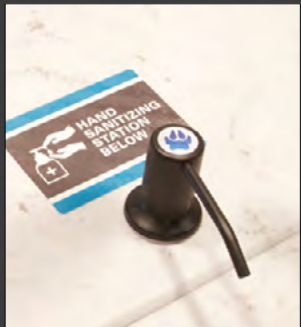
Night Shades



Upgraded Stainless Range Hood with Light and Fan



Power Awning



Cherokee Sanitizer



Cherokee Total Control App & Remote Control System



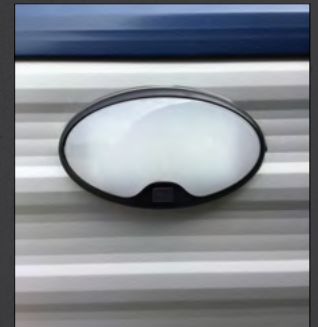
Detachable Power Cord



Entertainment System



Exterior LED Light Strip at Awning



External Porch Scare Light

LIMITED PACKAGE

* Optional package. Not all items available on all models. See participating dealers for details.



Cherokee Back up Camera System



Cherokee Exclusive Stable Step with Oversized Landing, 600LB. Capacity, Quick Release and Kick Plate



Stereo with Inside and Outside Speakers



Tire Pressure Monitors



Outside Shower with Hot and Cold Water

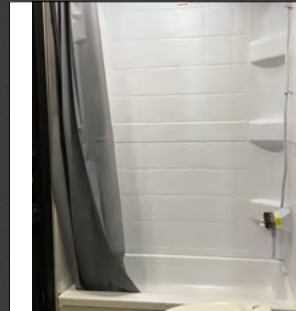
Real Blackout Glass, Safety Slam, Friction Hinge Entry Door with Window and Shade Prep



Seamless Countertop



Seamless Roofing Membrane with Heat Reflectivity



Shower Tub Surround



Spare Tire



Wolf Pup Quick Jack



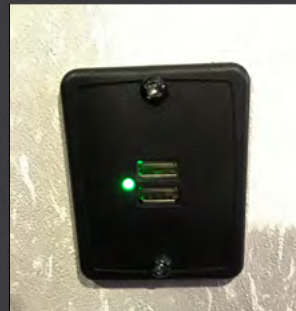
Tongue and Groove Plywood Flooring



Upgraded Evergreen Mattress



Flushmount Range with Cover



USB charging stations (Beds, Bunks, Table where Applicable)



Power Gear™ Frame Technology and Space Saver Rail Design



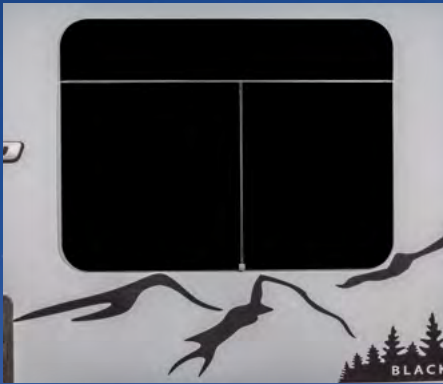
BLACK LABEL EDITION

* Optional package. Not all items available on all models. See participating dealers for details.

The Cherokee is proud to offer the Black Label Edition as an optional upgrade to the brand. The Black Label Edition includes all the regular standard Cherokee features along these additional highlights shown.



Gel Coated Fiberglass - Power Tongue Jack - Aluminum Rims
LED Exterior Clearance and Taillights



Automotive Frameless Windows Package



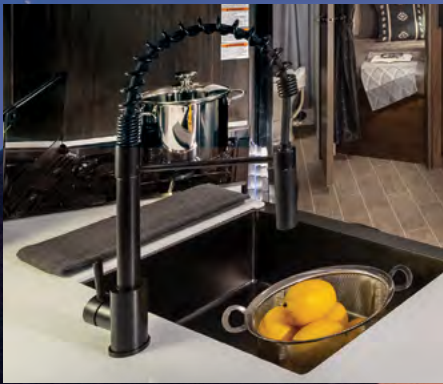
Hands Free Baggage Door Catch



LG Solid Surface Countertop



Deep Stainless Steel Sink



Residential Pullout Faucet



Pillowtop Mattress



Oversized Bunk Pads



Thermo-Foil Arctic Insulation



Battery Disconnect



Battery Minder



Solid Wood Cabinet Doors



Designer Fabric

14CC



OUTSIDE TV MOUNT OUTSIDE STORAGE

CLICK OR SCAN FOR FLOORPLAN SHEET



16BHS



OUTSIDE TV MOUNT MINI KITCHEN OUTSIDE STORAGE

CLICK OR SCAN FOR FLOORPLAN SHEET



16FQ

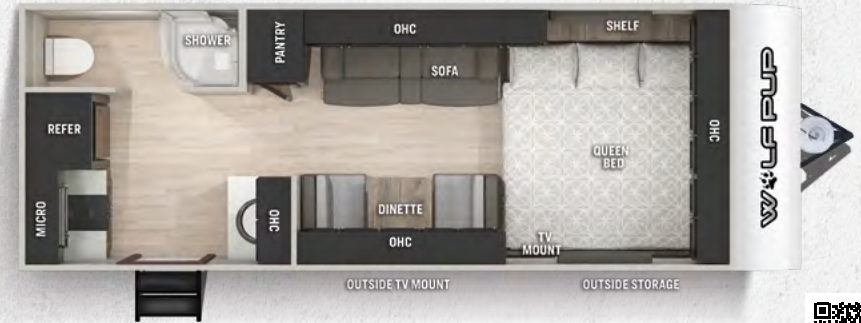


MINI KITCHEN OUTSIDE TV MOUNT OUTSIDE STORAGE

CLICK OR SCAN FOR FLOORPLAN SHEET



16HE



OUTSIDE TV MOUNT OUTSIDE STORAGE

CLICK OR SCAN FOR FLOORPLAN SHEET



16PF



OUTSIDE TV MOUNT MINI KITCHEN OUTSIDE STORAGE

CLICK OR SCAN FOR FLOORPLAN SHEET



TRAVEL TRAILERS

	TR14CC	TR16BHS	TR16FQ	TR16HE	TR16PF
DRY HITCH WEIGHT	400-LBS	377-LBS.	444-LBS.	420-LBS.	335-LBS.
SHIP WEIGHT	2865-LBS.	3078-LBS.	3012-LBS.	3290-LBS.	3565-LBS.
UNLOADED VEHICLE WEIGHT	2884-LBS.	3097-LBS.	3031-LBS.	3309-LBS.	3584-LBS.
CARGO CARRYING CAPACITY	1016-LBS.	780-LBS.	913-LBS.	611-LBS.	1851-LBS.
AXLE WEIGHT	2465-LBS.	2701-LBS.	2568-LBS.	2870-LBS.	3230-LBS.
EXTERIOR LENGTH	19'1"	21'5"	21'6"	22'4"	22'4"
EXTERIOR HEIGHT W/A/C	10'6"	10'6"	10'6"	10'6"	10'6"
EXTERIOR WIDTH	85"	85"	85"	85"	85"
GREY CAPACITY	23-GAL.	23-GAL.	23-GAL.	23-GAL.	23-GAL.
BLACK CAPACITY	23-GAL.	23-GAL.	23-GAL.	23-GAL.	23-GAL.
FRESH CAPACITY	26-GAL.	26-GAL.	26-GAL.	26-GAL.	26-GAL.

16TS



CLICK OR SCAN FOR FLOORPLAN SHEET



17JG



CLICK OR SCAN FOR FLOORPLAN SHEET



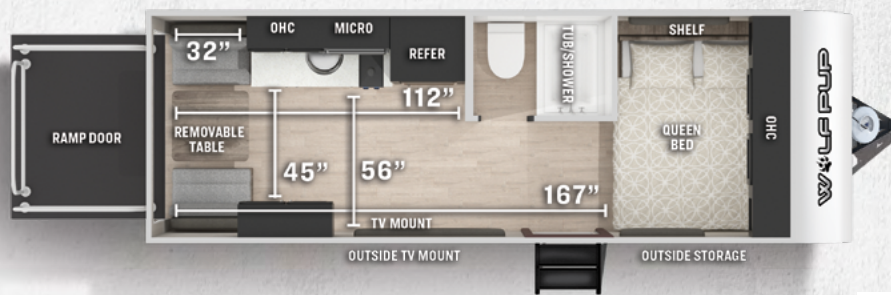
18TO



CLICK OR SCAN FOR FLOORPLAN SHEET



18RJB



CLICK OR SCAN FOR FLOORPLAN SHEET



TRAVEL TRAILERS

	TR16TS	TR17JG	TR18TO	TR18RJB
DRY HITCH WEIGHT	470-LBS.	430-LBS.	437-LBS.	426-LBS.
SHIP WEIGHT	3185-LBS.	3860-LBS.	3778-LBS.	3416-LBS.
UNLOADED VEHICLE WEIGHT	3204-LBS.	3879-LBS.	3797-LBS.	3435-LBS.
CARGO CARRYING CAPACITY	766-LBS.	1120-LBS.	1201-LBS.	1564-LBS.
AXLE WEIGHT	2715-LBS.	3430-LBS.	3341-LBS.	2990-LBS.
EXTERIOR LENGTH	21'-7"-LBS.	23'-2"	23'-0"	22'-7"
EXTERIOR HEIGHT W/A/C	10'-6"	10'-6"	10'-6"	10'-6"
EXTERIOR WIDTH	85"	85"	85"	85"
GREY CAPACITY	23-GAL.	23-GAL.	23-GAL.	23-GAL.
BLACK CAPACITY	28-GAL.	23-GAL.	23-GAL.	23-GAL.
FRESH CAPACITY	26-GAL.	26-GAL.	26-GAL.	26-GAL.

WOLF PUP

TRAVEL TRAILERS

CUSTOMER SATISFACTION



www.ForestRiverBuyLocal.com



CENTRE DE VÉRIFICATION AVANT LIVRAISON

Voici 20,000 pieds carrés qui vous offrent une assurance de qualité. La base essentielle d'un produit de haute qualité. Cette installation de pointe fait ses commentaires de façon quotidienne et immédiate à la production afin de s'assurer de la qualité de construction de chaque unité.



Learn More

Scan this barcode using a QR Reader on your smart phone to learn more about Forest River.



A Berkshire Hathaway company.



FREE MEMBERSHIP
to Forest River Owners' Group



www.forestriverfrog.com

WWW.FORESTRIVERINC.COM

YOUR WOLF PUP DEALER

All information contained in this brochure is believed to be accurate at the time of publication. However, during the model year, it may be necessary to make revisions and Forest River, Inc., reserves the right to make all such changes without notice, including prices, colors, materials, equipment and specifications as well as the addition of new models and the discontinuance of models shown in this brochure. Therefore, please consult with your Forest River, Inc., dealer and confirm the existence of any materials, design or specifications that are material to your purchase decision. Litho. U.S.A. FOR 1754 W: 2021.03.09



24/7 EMERGENCY ROADSIDE ASSISTANCE WITH VEHICLE PURCHASE*

TOWING
JUMP-STARTS
TIRE CHANGES
FLUID DELIVERY
LOCKOUT
SERVICE

WINCH-OUT
MOBILE MECHANIC
TECHNICAL
SUPPORT
DEALER LOCATOR
SERVICES



*VALID FOR 1 YEAR FROM DATE OF PURCHASE

Specification Definitions

GVWR (Gross Vehicle Weight Rating) - is the maximum permissible weight of the unit when fully loaded. It includes all weights, inclusive of all fluids, cargo, optional equipment and accessories. For safety and product performance do NOT exceed the GVWR.

GAWR (Gross Axle Weight Rating) - is the maximum permissible weight, including cargo, fluids, optional equipment and accessories that can be safely supported by a combination of all axles.

UVW (Unloaded Vehicle Weight)* - is the typical weight of the unit as manufactured at the factory. It includes all weight at the unit's axle(s) and tongue or pin and LP Gas. The UVW does not include cargo, fresh potable water, additional optional equipment or dealer installed accessories.

*Estimated average based on standard build optional equipment.

CCC (Cargo Carrying Capacity)** - is the amount of weight available for fresh potable water, cargo, additional optional equipment and accessories. CCC is equal to GVWR minus UVW. Available CCC should accommodate fresh potable water

(8.3 lbs per gallon). Before filling the fresh water tank, empty the black and gray tanks to provide for more cargo capacity.

** Estimated average based on standard build optional equipment

Each Forest River RV is weighed at the manufacturing facility prior to shipping. A label identifying the unloaded vehicle weight of the actual unit and the cargo carrying capacity is applied to every Forest River RV prior to leaving our facilities.

The load capacity of your unit is designated by weight, not by volume, so you cannot necessarily use all available space when loading your unit.