

*Sprinter*  
by Keystone



YOUR ROAD TO LEISURE  
IN THE 21<sup>ST</sup> CENTURY

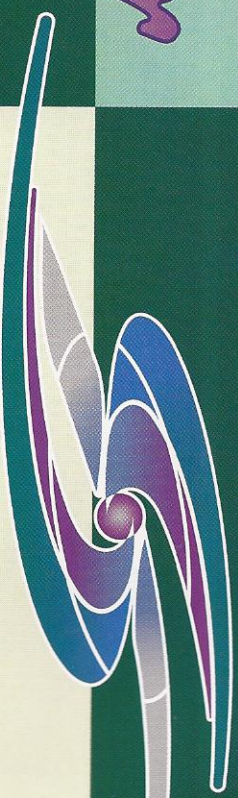


"IT'S IN THE DETAILS"



# Sprinter

by Keystone



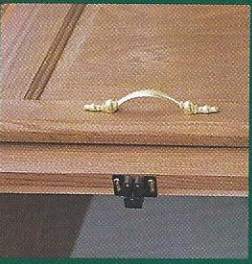
## LOOK AT THESE FABULOUS DETAILS



UNDER-SINK TIP-OUT  
STORAGE TRAY



HIGH ARCH SINGLE  
LEVER WATER FAUCET

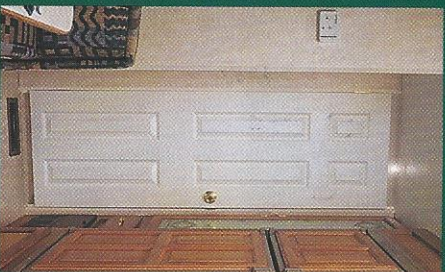


RESIDENTIAL-STYLE  
DOOR LATCHES

- Cambered steel frame with extra supporting outriggers under every Sprinter RV.
- Rubber roof (12-yr. mfr.'s warranty) rolled over side and rear walls to eliminate seams and prevent potential leaks.
- Fully-decked roof on trussed rafters, a full 5" thick, providing an R-11 insulation rating.
- One-piece, seamless, 5/8" floor deck with a 25-yr. mfr.'s warranty.
- Spacemaker™ Underfloor Fresh Water System, 45-gal. capacity, heated and enclosed, offers lower center of gravity and much more interior storage.
- Chrome rear bumper cover.
- Solid Oak Raised Panel cabinet doors and drawer fronts crafted by skilled cabinet makers from choice woods with consistent grain and finish.
- Designer interiors harmonize with tasteful exterior graphics.
- Solid oak slide-out face.
- Full-Function Monitor Panel in all kitchens.
- More overhead cabinets and drawers than competitive models.
- Large skylight over every shower and tub.
- Easy-opening entry steps with extra-low first step.
- Awning, air conditioner, large microwave, TV antenna, cable hook-up, mini-blinds—ALL STANDARD.
- Taller and wider entry door with radius corners.
- 45" extra-wide dinette seats.
- Deluxe Mastercraft™ residential-quality furniture.
- Outside storage doors.
- Pass-Thru Super Storage (Queen Bed Travel Trailers) provides easy-access and incredible storage space for long or bulky items.

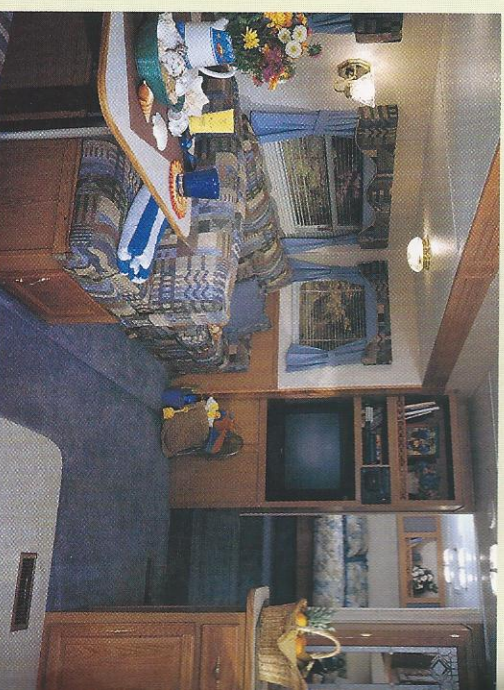


SKYLIGHT OVER  
TUB/SHOWER,  
SPACIOUS BATHROOM



RESIDENTIAL-STYLE  
SIX-PANEL DOORS

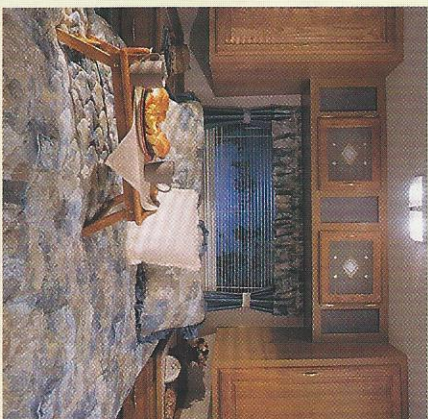
**P**acked with features, fully equipped, and glowing with eye appeal, the 2000 Sprinter quite simply offers you the longest list of Standard Features you'll find in a midline recreational vehicle in America today. As for value, you can own a Sprinter at the same price point as the competition's ENTRY level! Sprinter owners also enjoy benefits which cannot be seen on the outside, such as our exclusive building technique, ALUMIGUARD™, and our Space Maker™ underfloor fresh-water system. We communicate constantly with our dealers to find out what you, the customer, would like to have.







# LOADED WITH FEATURES YOU TOLD US YOU WANT



BEDROOMS ARE BUILT FOR COMFORT,  
CONVENIENCE AND STORAGE SPACE

Therefore, we believe  
that after you've  
examined a Sprinter  
inside and out,  
feature by feature,  
you'll decide  
it's the RV with  
everything you want.

**Keystone Listens...**

FLOOR PLAN  
275 FWBHGL  
IN PACIFIC BLUE  
COLOR SCHEME



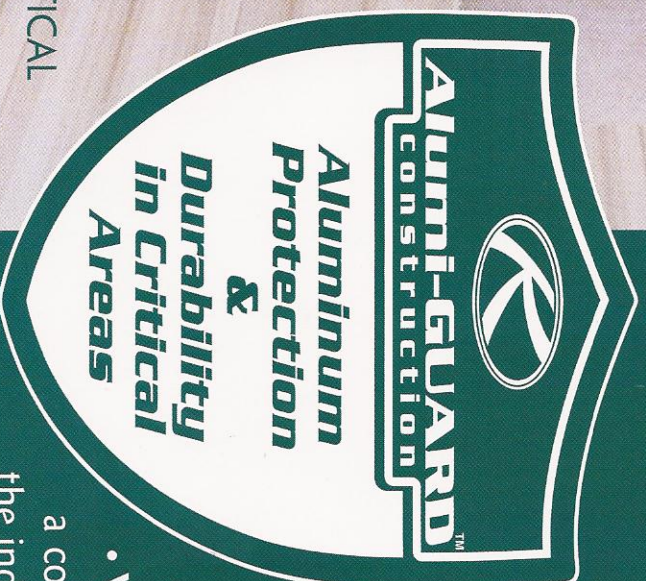
FLOOR PLAN 360FKGL IN THE BEAUTIFUL AZALEA INTERIOR COLOR SCHEME



INTRODUCING ...

**ALUMI-GUARD™**  
THE PROTECTION OF  
ALUMINUM AT THE PRICE OF WOOD

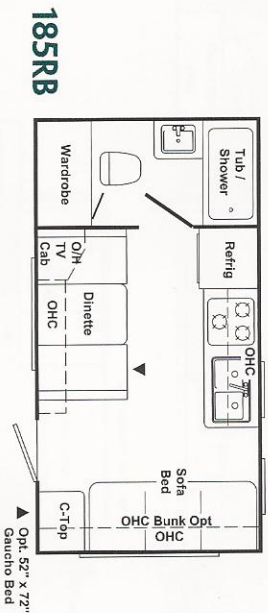
**ALUMI-GUARD™ IS A NEW BUILDING  
TECHNIQUE DESIGNED BY KEYSTONE RV  
COMPANY'S ENGINEERS EXCLUSIVELY FOR  
SPRINTER TRAVEL TRAILERS  
AND FIFTH WHEELS.**



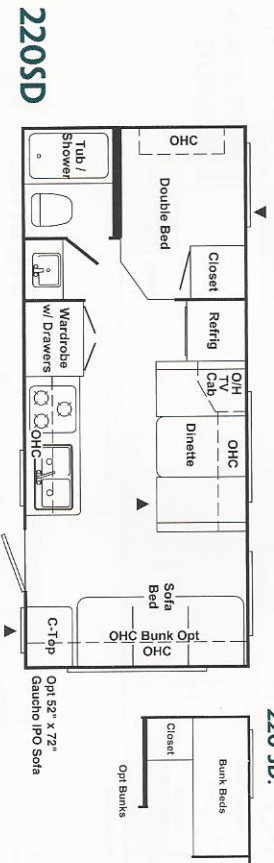
THIS PHOTO  
OF A SPRINTER  
DURING FACTORY  
ASSEMBLY SHOWS  
THE PLACEMENT  
OF ALUMI-GUARD  
PROTECTION IN CRITICAL  
AREAS. AT KEYSTONE,  
QUALITY REALLY GETS  
UNDER OUR SKIN!

- **PROTECTION** — Alumi-GUARD™ replaces wood with aluminum in the critical areas of construction—at all four corners, and around doors, windows, and exterior storage compartments, providing the protection that only aluminum can offer. Alumi-GUARD™ extends the life of your Sprinter by protecting these areas from the damaging effects of moisture.
- **VALUE** — Alumi-GUARD is a great value as well as a completely new technique offered by no one else in the industry. Think of it! Alumi-GUARD protection at the **SAME PRICE POINT OUR COMPETITION OFFERS FOR WOOD ALONE.**

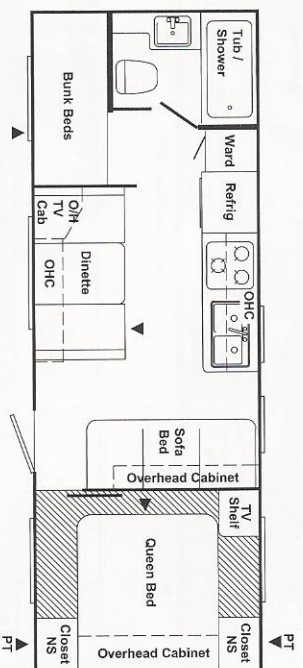




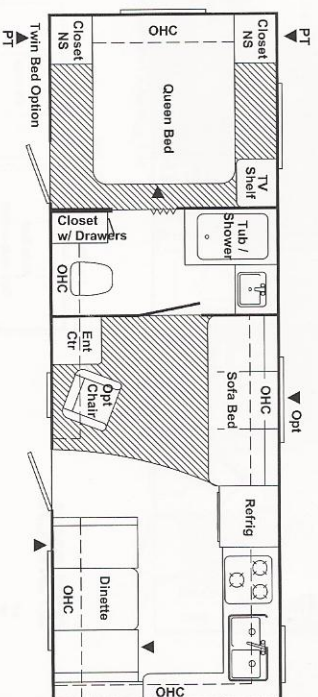
OPTION FOR  
220 SD:



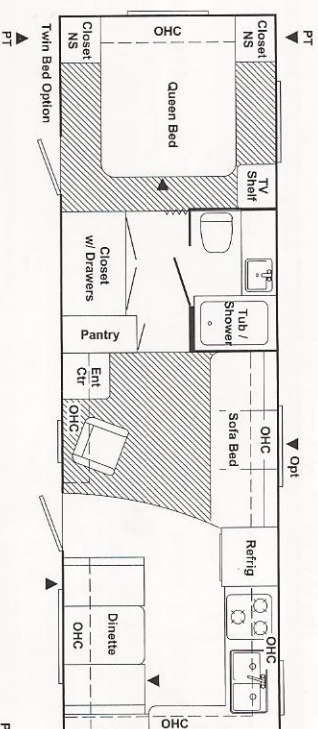
**265 BH**



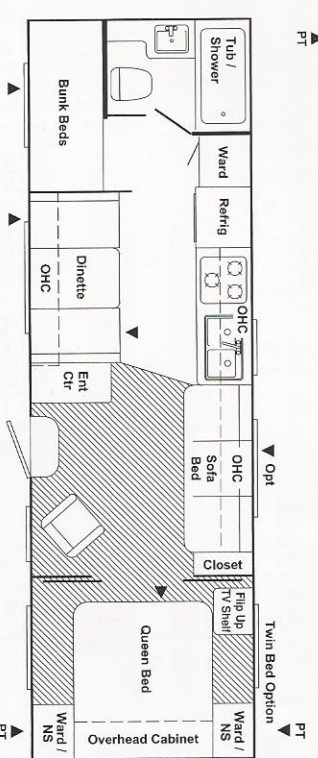
**275 FK**



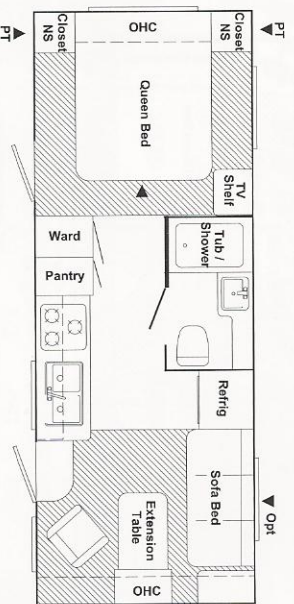
**305 FK**



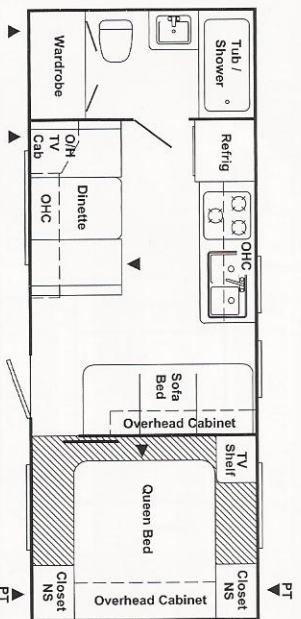
**315 BH**



**235 FL**



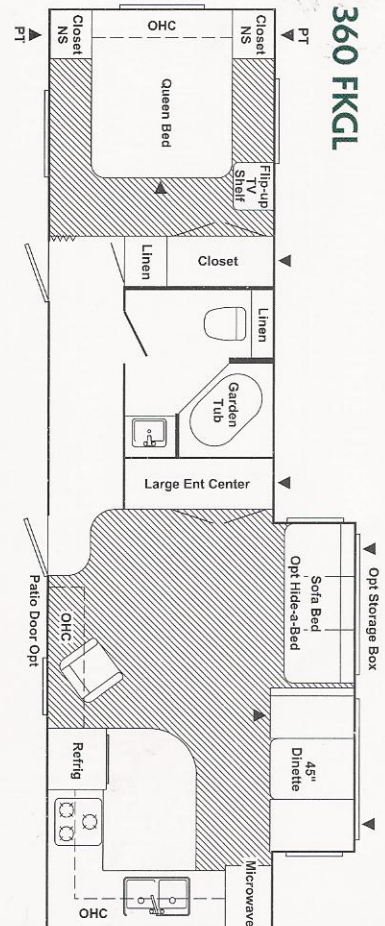
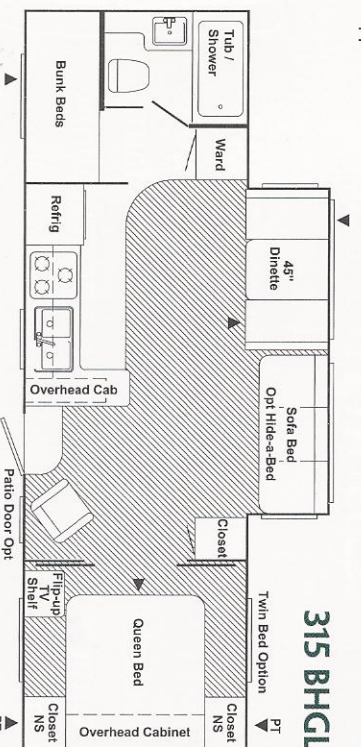
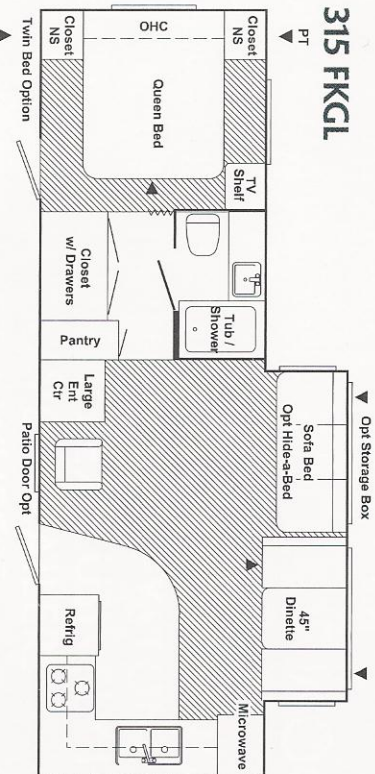
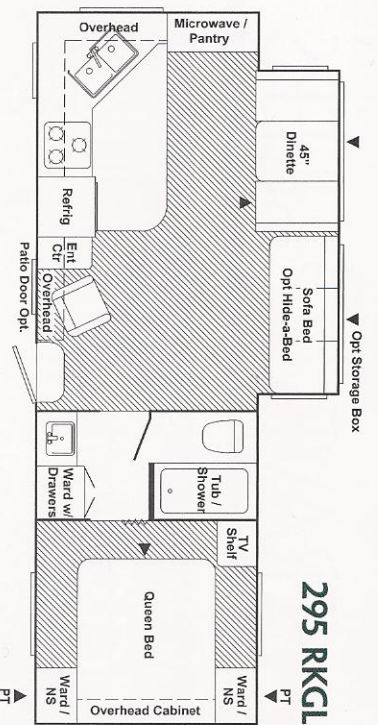
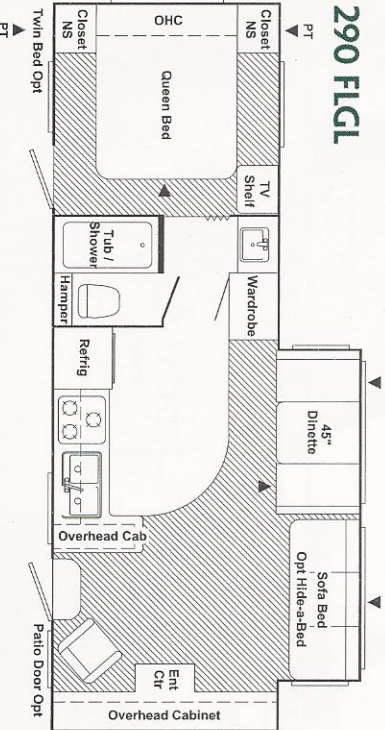
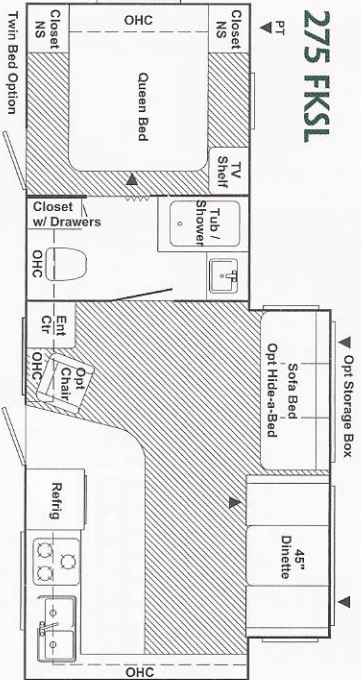
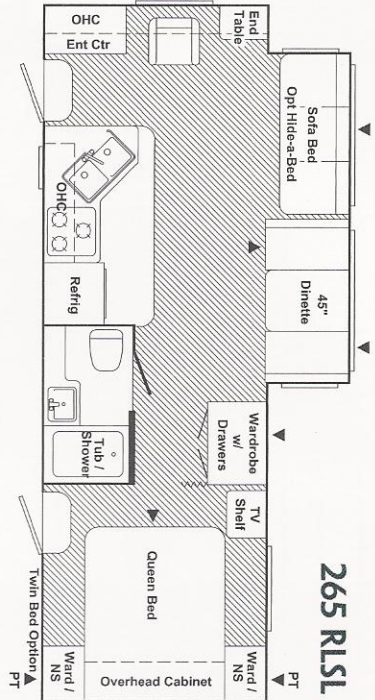
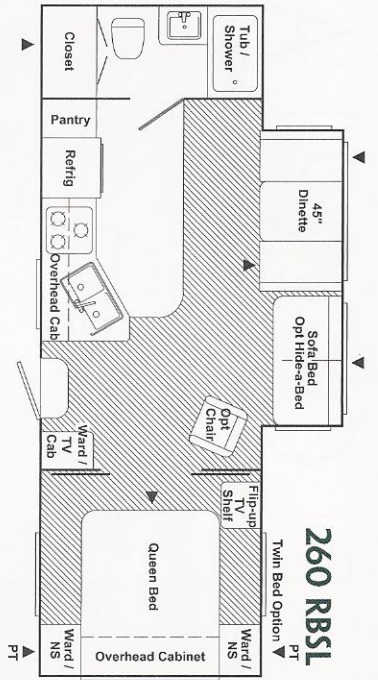
**245 FB**



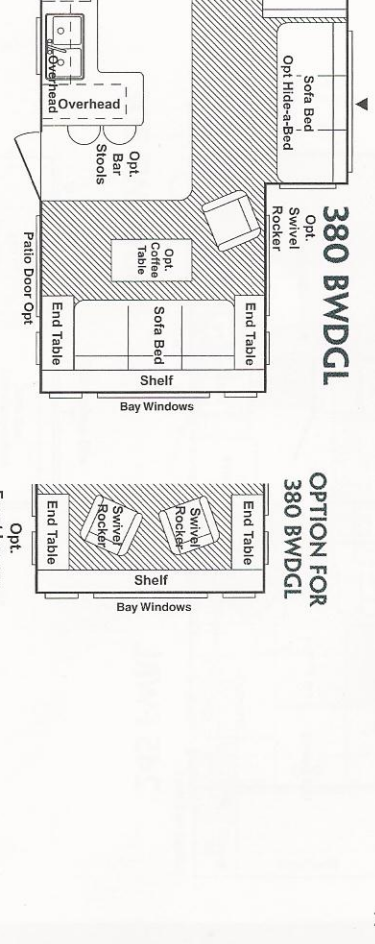
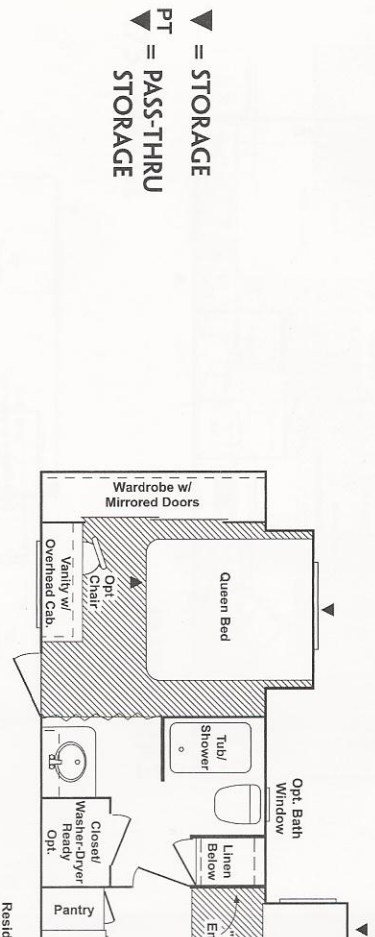
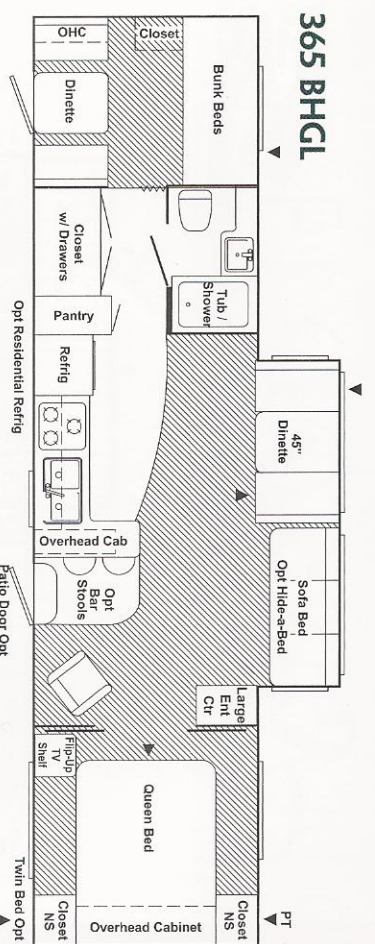
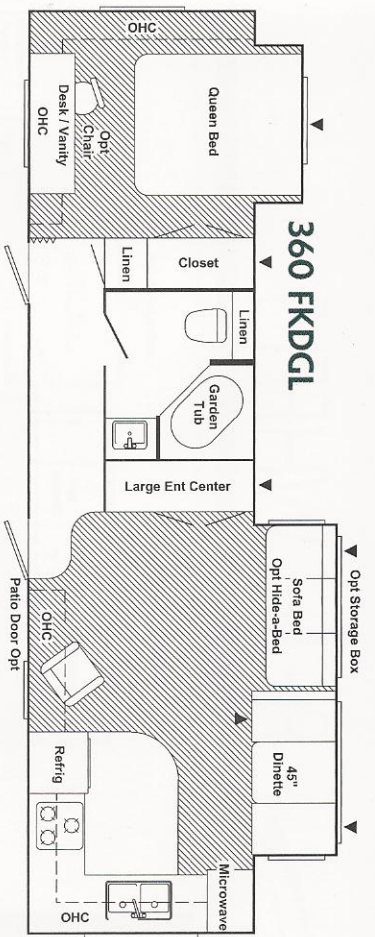
▼ = STORAGE  
PT = PASS-THRU  
STORAGE



# TRAVEL TRAILERS WITH SLIDE-OUTS







▼ = STORAGE  
PT = PASS-THRU  
STORAGE

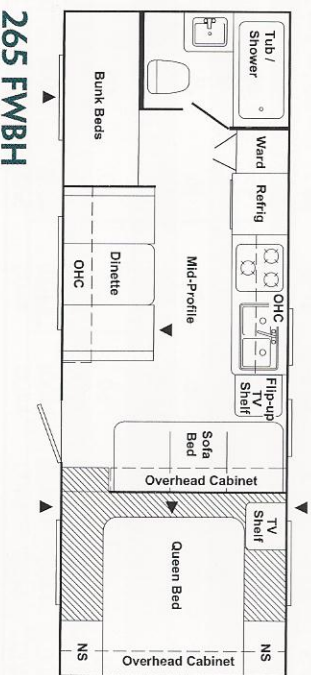
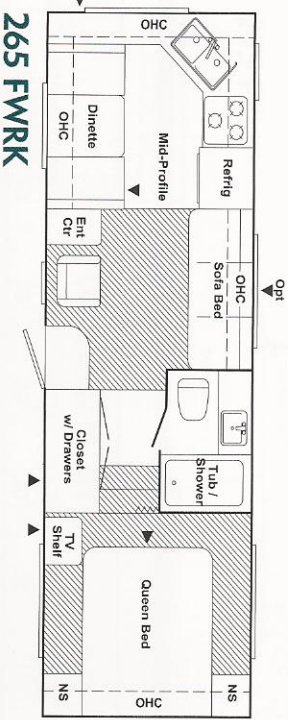
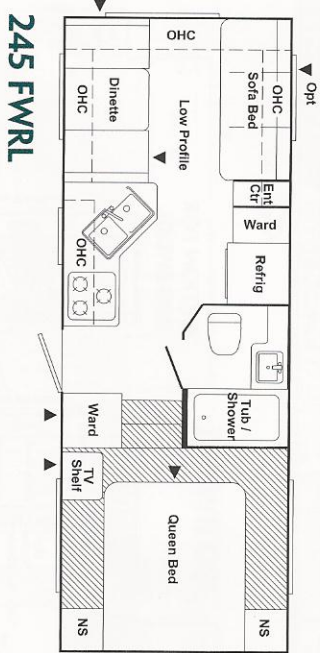
TRAVEL TRAILERS									WITH SLIDE-OUTS											
	185RB	220SD	235FL	245FB	265BH	275FK	305FK	315BH	260RB SL	265RL SL	275FK SL	290FL GL	295RK GL	315FK GL	315BH GL	360FK GL	360FK DGL	365BH GL*	380BW DGL	
GVWR	7500	7720	7870	7480	7800	7860	7920	7580	8000	9600	9550	9550	9620	9675	9600	11440	11490	11380	11740	
GROSS DRY WEIGHT	3840	4360	5170	4755	5200	5440	5625	5660	5914	5960	6250	6550	6741	7000	6950	7940	8140	8205	8146	
CARRYING CAPACITY	3660	3360	2700	2725	2600	2420	2295	1920	2086	3660	3300	3000	2881	2675	2650	3500	3350	3175	3594	
HITCH	500	720	872	480	800	860	920	580	1000	900	850	850	820	875	800	1040	1090	980	1340	
DRY AXLE WEIGHT	3340	3740	4368	4380	4400	4580	4820	5080	5020	5060	5400	5700	6000	6300	6150	6900	7050	7320	7100	
EXTERIOR LENGTH	19' 6"	23' 9"	24' 7"	25' 10"	28' 7"	29' 4"	31' 4"	31' 4"	28' 6"	28' 8"	29' 5"	30' 4"	31' 2"	32' 5"	31' 3"	36' 7"	36' 7"	38' 1"	38' 7"	
EXTERIOR WIDTH	8'	8'	8'	8'	8'	8'	8'	8'	8'	8'	8'	8'	8'	8'	8'	8'	8'	8'	8'	
FRESH WATER CAP. (GAL)	45	45	45	45	45	45	45	45	45	45	45	45	45	45	45	45	45	45	45	
WASTE WATER CAP. (GAL)	32	32	32	32	38	32	38	38	32	32	32	38	38	32	38	38	38	38	32	
GRAY WATER CAP. (GAL)	38	38	38	38	38	38	38	38	38	38	76	38	76	76	38	76	76	57	57	
TIRE SIZE	205/ 75R15	205/ 75R15	205/ 75R15	205/ 75R15	205/ 75R15	205/ 75R15	205/ 75R15	205/ 75R15	205/ 75R15	225/ 75R15	225/ 75R15	225/ 75R15	225/ 75R15	225/ 75R15	225/ 75R15	225/ 75R15	225/ 75R15	225/ 75R15	225/ 75R15	
LPG CAPACITY (LB)	60	60	60	60	60	60	60	60	60	60	60	60	60	60	60	60	60	60	60	
EXT. HEIGHT-TO-OF A/C	9' 10"	10' 0"	10' 0"	10' 0"	10' 0"	10' 0"	10' 0"	10' 0"	10' 11"	10' 11"	10' 11"	11' 0"	11' 0"	11' 0"	11' 0"	11' 1"	11' 1"	11' 1"	11' 1"	
CAWR	3500/ 3500	3500/ 3500	3500/ 3500	3500/ 3500	3500/ 3500	3500/ 3500	3500/ 3500	3500/ 3500	3500/ 3500	4400/ 4400	4400/ 4400	4400/ 4400	4400/ 4400	4400/ 4400	4400/ 4400	5200/ 5200	5200/ 5200	5200/ 5200	5200/ 5200	

\* ESTIMATED

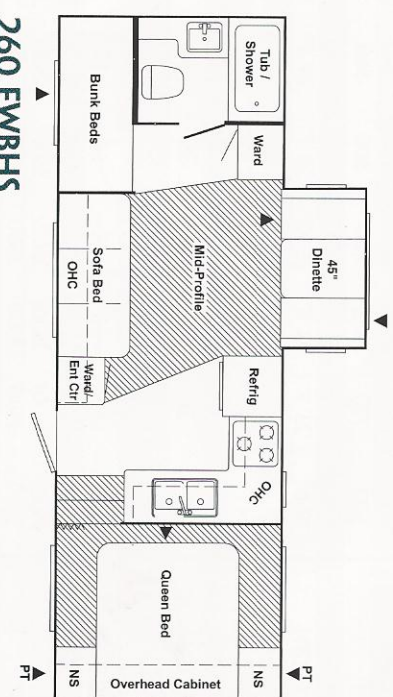
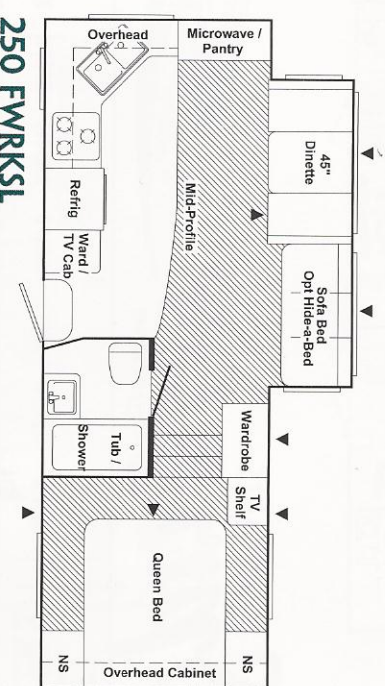
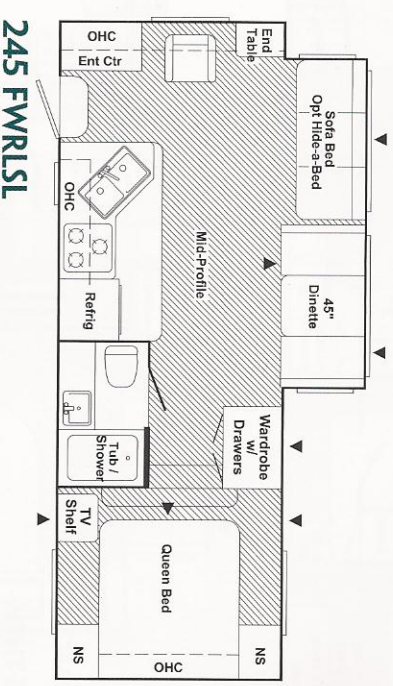




### WITHOUT SLIDE-OUTS

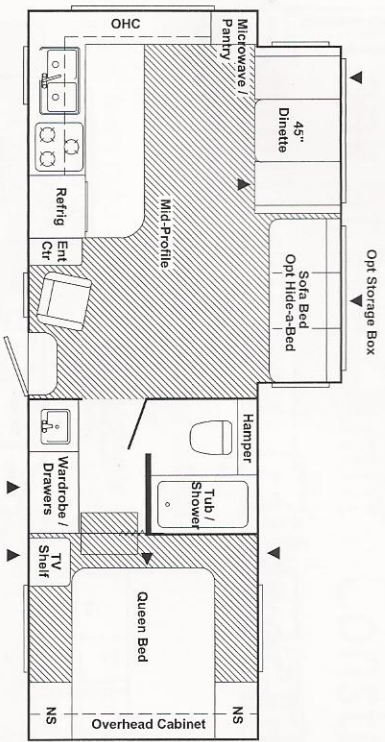


### WITH SLIDE-OUTS

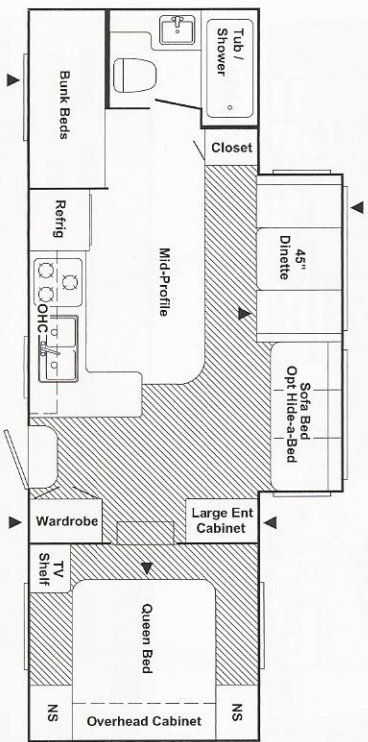
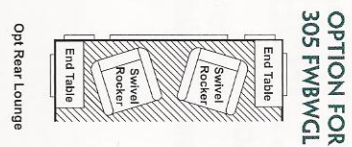




# FLOORPLANS

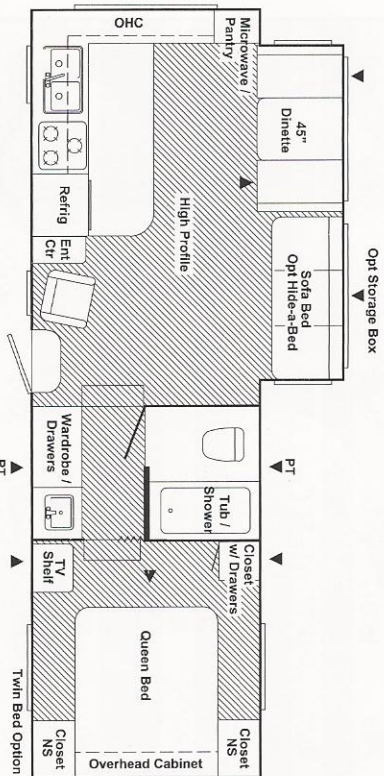


275 FWKGL

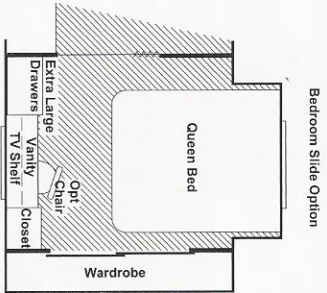


275 FWBHGL

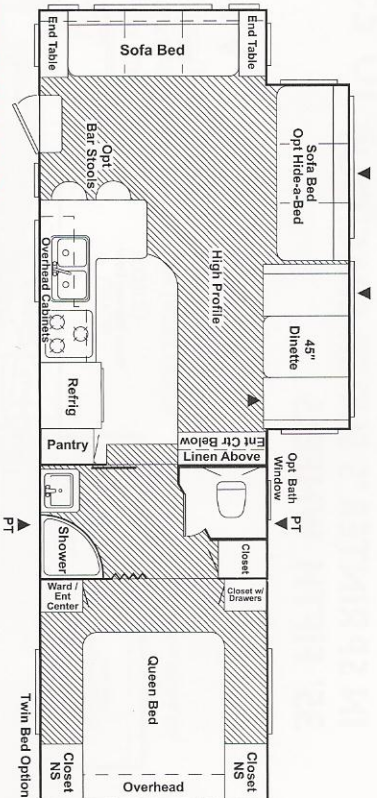
**SPRINTER  
SELECT  
PACKAGE**  
FOR ALL 280 AND  
LARGER HIGH PROFILE  
FIBERGLASS FIFTH WHEELS:  
FIBERGLASS FRONT CAP  
CHROME WHEELS  
"SELECT" GRAPHICS



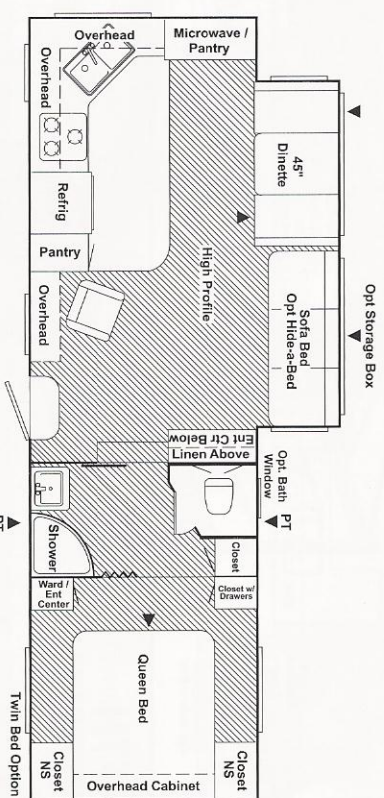
280 FWKGL



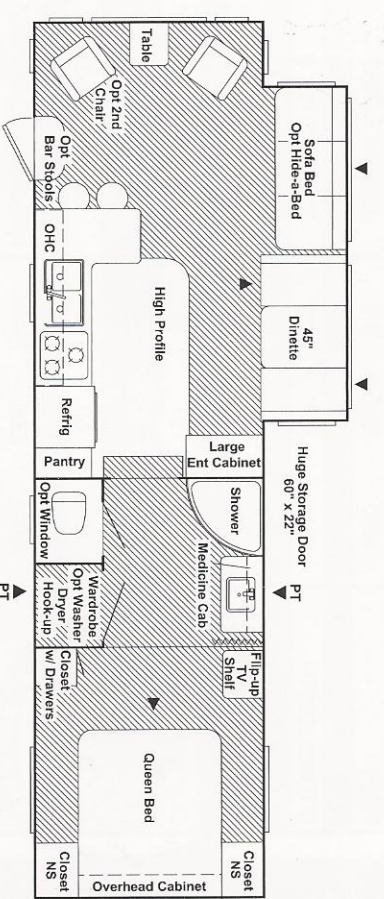
OPTION FOR  
280 FWKGL, 305 FWBWGL  
305 FWKGL, 325 FWRLGL  
350 FWBHGL



305 FWBWGL



305 FWKGL

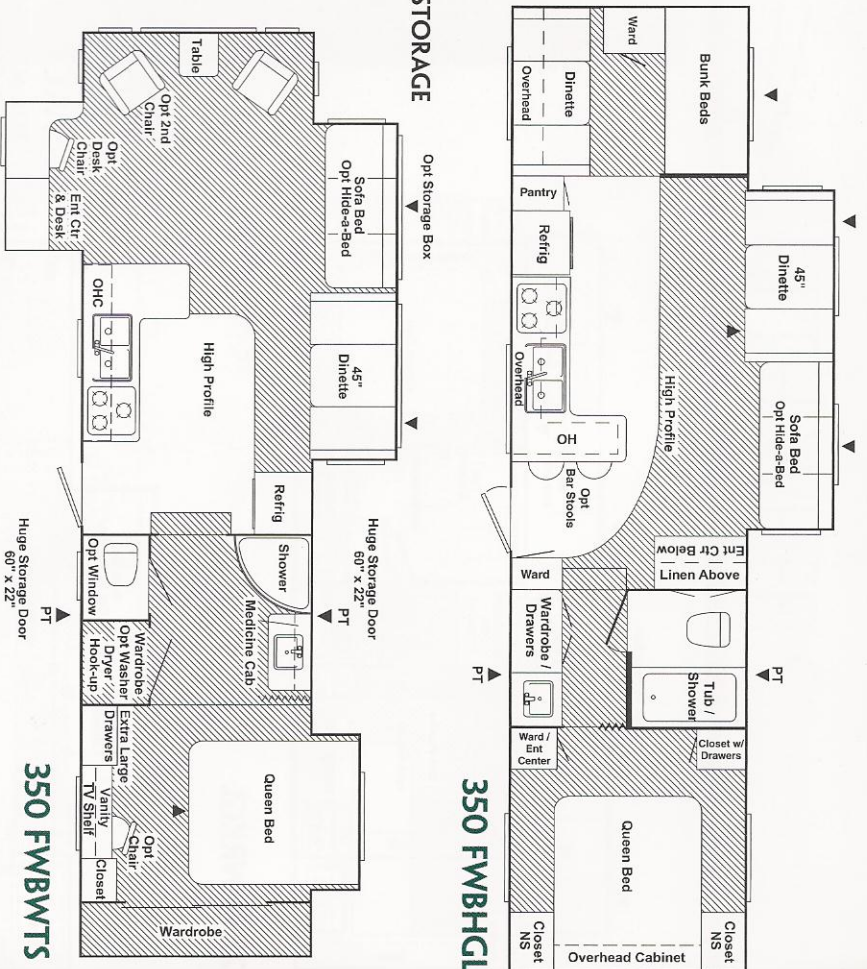
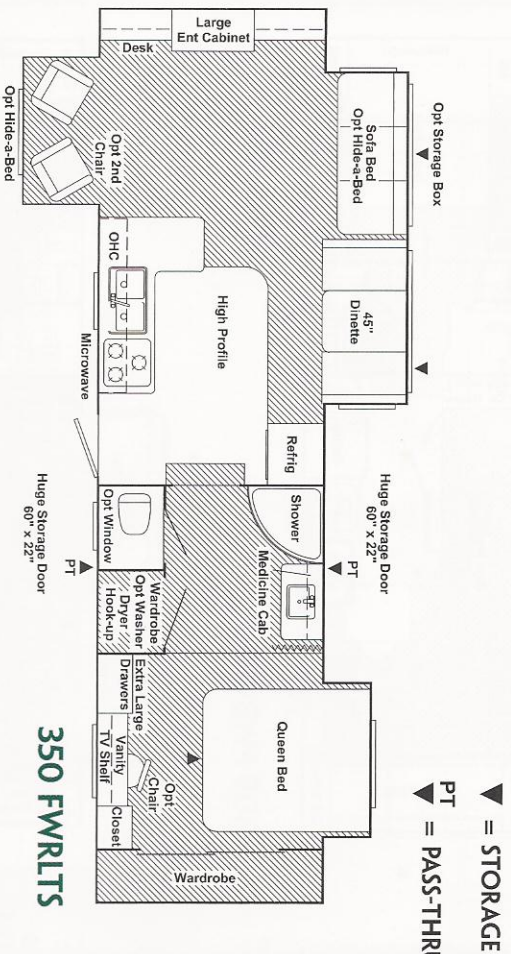


325 FWRLGL





# ENJOY YOUR LEISURE ADVENTURES IN SPRINTER'S SUPER-SPACIOUS 35' FIFTH WHEELS



FIFTH WHEELS									
	245FW RL	265FW RK	265FW BH	245FW RLSL	250FW RKSL	260FW BHS	275FW RKGL	275FW BHGL	280FW RKGL
GVWR	8000	8480	8280	8020	7920	8380	9940	10060	10340
GROSS DRY WEIGHT	5400	6420	5754	6373	6650	6559	7053	7060	7583*
CARRYING CAPACITY	2600	2060	2526	1647	1330	1821	2887	3000	2757
HITCH	1000	1075	990	1020	980	1090	1140	1260	1540
DRY AXLE WEIGHT	4400	5020	4560	5500	5720	5300	6060	5800	6460
EXTERIOR LENGTH	25' 10"	27' 5"	27' 5"	25' 4"	26' 4"	28' 4"	28' 5"	28' 9"	30' 5"
EXTERIOR WIDTH	8'	8'	8'	8'	8'	8'	8'	8'	8'
FRESH WATER CAP. (GAL)	45	45	45	45	45	45	45	45	45
WASTE WATER CAP. (GAL)	32	32	38	32	38	38	38	38	32
GRAY WATER CAP. (GAL)	76	38	38	38	57	76	57	38	76
TIRE SIZE	205/75R15	205/75R15	205/75R15	205/75R15	205/75R15	205/75R15	225/75R15	225/75R15	225/75R15
LPG CAPACITY (LB)	60	60	60	60	60	60	60	60	60
EXT. HEIGHT-TO-OP OF A/C	10' 9"	11' 4"	11' 4"	11' 3"	11' 5"	11' 4"	11' 4"	11' 4"	12' 3"
CAWR	3500/3500	3500/3500	3500/3500	3500/3500	3500/3500	3500/3500	4400/4400	4400/4400	4400/4400

WITH SLIDE-OUTS									
	245FW RL	265FW RK	265FW BH	245FW RLSL	250FW RKSL	260FW BHS	275FW RKGL	275FW BHGL	280FW RKGL
GVWR	8000	8480	8280	8020	7920	8380	9940	10060	10340
GROSS DRY WEIGHT	5400	6420	5754	6373	6650	6559	7053	7060	7583*
CARRYING CAPACITY	2600	2060	2526	1647	1330	1821	2887	3000	2757
HITCH	1000	1075	990	1020	980	1090	1140	1260	1540
DRY AXLE WEIGHT	4400	5020	4560	5500	5720	5300	6060	5800	6460
EXTERIOR LENGTH	25' 10"	27' 5"	27' 5"	25' 4"	26' 4"	28' 4"	28' 5"	28' 9"	30' 5"
EXTERIOR WIDTH	8'	8'	8'	8'	8'	8'	8'	8'	8'
FRESH WATER CAP. (GAL)	45	45	45	45	45	45	45	45	45
WASTE WATER CAP. (GAL)	32	32	38	32	38	38	38	38	32
GRAY WATER CAP. (GAL)	76	38	38	38	57	76	57	38	76
TIRE SIZE	205/75R15	205/75R15	205/75R15	205/75R15	205/75R15	205/75R15	225/75R15	225/75R15	225/75R15
LPG CAPACITY (LB)	60	60	60	60	60	60	60	60	60
EXT. HEIGHT-TO-OP OF A/C	10' 9"	11' 4"	11' 4"	11' 3"	11' 5"	11' 4"	11' 4"	11' 4"	12' 3"
CAWR	3500/3500	3500/3500	3500/3500	3500/3500	3500/3500	3500/3500	4400/4400	4400/4400	4400/4400

\* ESTIMATED

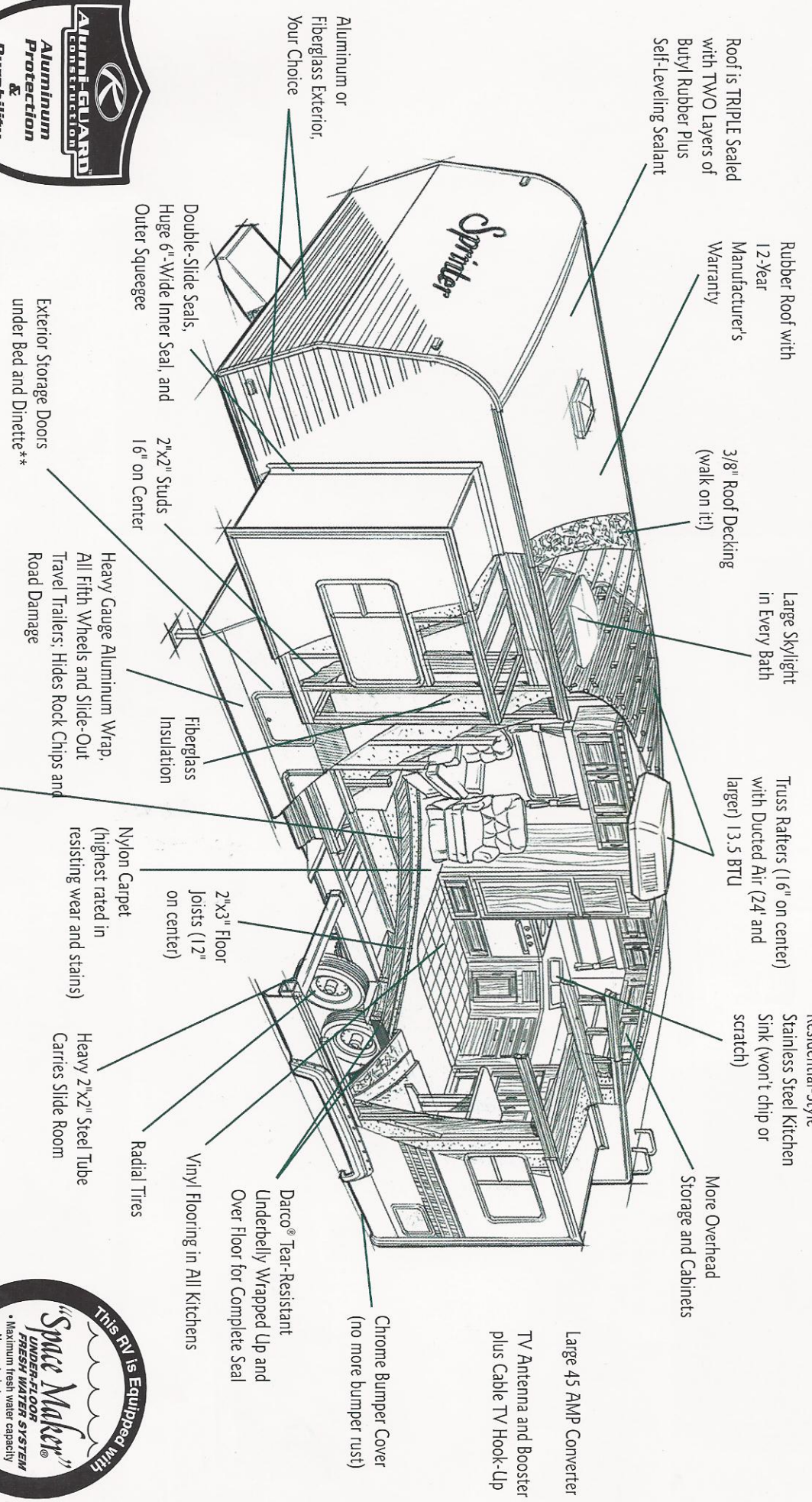
ADD 400 LBS. FOR BEDROOM SLIDE-OUT



# QUALITY CONSTRUCTION

"GETS UNDER OUR SKIN..."

## Look at the Quality Construction Features of a Sprinter Travel Trailer or Fifth Wheel...



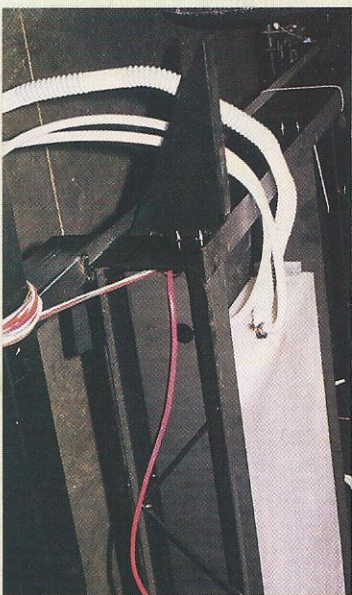
\*\*Some floor plans do not accommodate all of these features



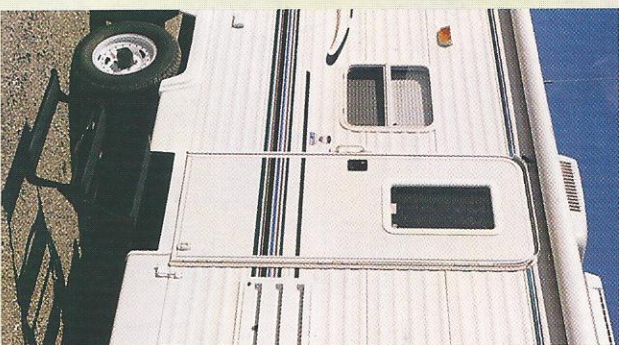
# Sprinter by Keystone

## 2000

### INNOVATION FROM THE INSIDE OUT



"Space Maker®" is Sprinter's underfloor fresh-water system. A large-capacity fresh water tank is located under the floor in a heated compartment to prevent the tank from freezing. By removing the tank area from the interior of the unit, useable storage space is greatly expanded. In addition, the tank location improves towability by lowering the center of gravity.



Radius Corner Door Protects Awning;  
Extra Low Step For Ease of Entry



Rain Gutters and Spouts



Double Protection  
Slide-Out Seals



NEW! Pass-Thru Storage on  
Many Floorplans

#### POPULAR OPTIONS SELECT MODELS

- Fiberglass Exterior
- Stabilizer Jacks
- Outside Shower
- 10-Gal. Water Heater
- Patio Door
- Free-Standing Table w/4 Chairs
- Washer/Dryer Hook-up
- Extra-Large Refrigerator
- Hide-a-Bed
- 15,000 BTU Air Conditioner
- Oak Refrigerator Front
- Spare Tire and Carrier
- Residential Refrigerator



**Keystone RV  
Company**

17400 Hackberry Drive Goshen, IN 46526  
(219) 642-4590 [www.keystoneriv.com](http://www.keystoneriv.com)

Product information and photography are as accurate as possible at the time of publication. Colors and finishes are photographic representations and may appear differently when viewing actual materials. Some features shown are optional. Features, floor plans, and specifications are subject to change without notice. 1/99



**Keystone Quality**

Sprinter Travel Trailers and Fifth Wheels are proudly manufactured by Keystone RV Company. The owner/managers of Keystone left key positions at major corporations in the RV industry and created Keystone to bring alive our concept of what quality really means. Within a short time, Keystone has grown to be one of the largest towable RV manufacturers in the nation, with eight manufacturing plants and over 300 dealers in North America.

**Quality Means People Who Care** — Creating excellent RVs like the Sprinter is our highest quality objective. Product excellence is the beginning, but we believe there are many more requirements for quality in manufacturing. At Keystone, quality also includes showing concern and respect for our customers, dealers, suppliers and each other. We have created a company culture where people come first.

**Quality Is An Attitude** — Our commitment to quality involves an attitude — the desire to produce a convenient, feature-loaded, outstanding RV. We respect the fact that the selection of your RV may be one of your life's largest purchases. We seek to make that purchase one of the best values you'll ever find. We strive to support our dealers in guiding you, and we welcome your inquiries and/or visits to our corporate headquarters.

**Quality Means Backing Our Products** — Service for your Sprinter is available across the U.S. and Canada. Our "Instant Service" Warranty means you will have dependable, qualified technicians available if you should require this assistance. Keystone, "Your Towable Specialist," welcomes you as a Sprinter customer. We value your business, and will continue to serve you long after you join our family of happy owners.

YOUR SPRINTER DEALER:

**JERRY'S TRAILERS & CAMPERS**  
2601 S. 13th St.  
Norfolk, NE 68701  
(402) 371-1306