

OUTLAW

CLASS A



FULLY LOADED FULL-BODY PAINT



SUPERSTITION FULL-BODY PAINT



THUNDER STRUCK FULL-BODY PAINT

CLASS C



ATOMIC RED **HD**



ROCKET BLUE **HD**

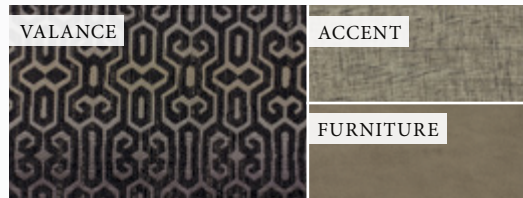


Thinking about buying a new coach? Have a question about one of our motorhomes? Trying to find a dealer near you?

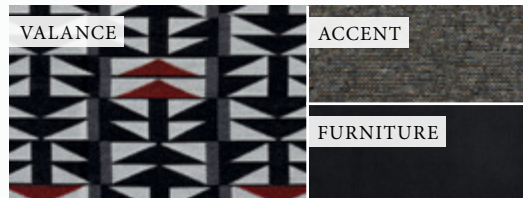
Our Coach Link® support team is here to help you in your purchase of a new motorhome! This dynamic team focuses directly on helping you find the answers you need to get you behind the wheel of one of our great new motorhomes. Call 800.860.5658 or visit us online at thormotorcoach.com.



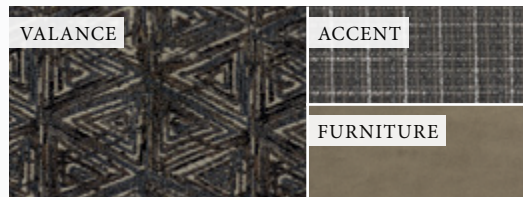
CLASS A



MOONDANCER



ROAD HOUSE

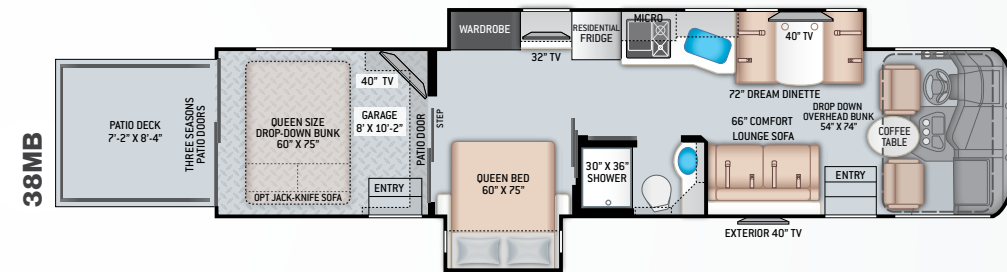
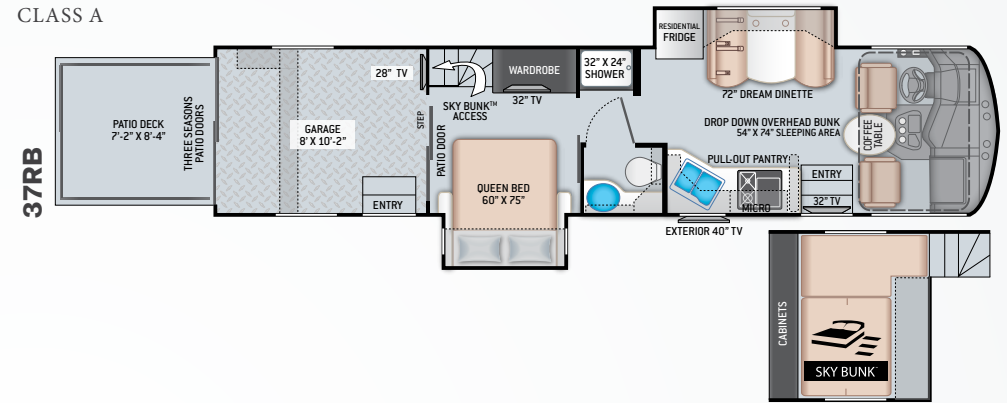


TATTOO BLUE

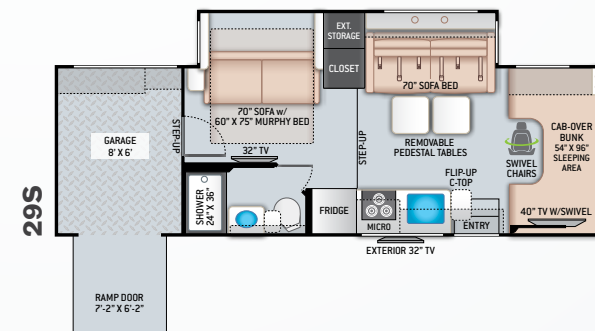
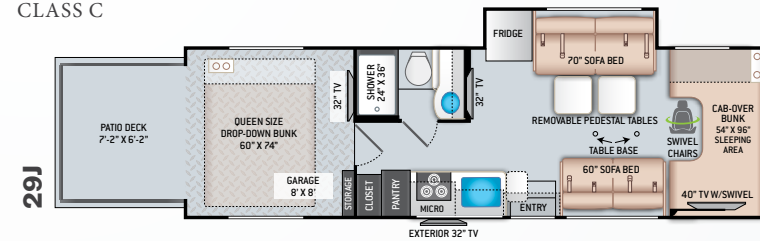


CLASS C

CLASS A



CLASS C



Class A Featured Highlights

CONSTRUCTION & EXTERIOR

- Ford® F-53 Chassis - 6.8L Triton® V10 Engine, 320HP, 460 lb.-ft. Torque - TorqShift® 6-Speed Automatic with Overdrive Transmission
- Full-Body Paint with Gel Coated Sidewalls & Invisible Front Mask Paint Protection
- Automatic Leveling Jacks with Touchpad Controls
- Basement Pass-Through Storage
- Power Patio Awning with Integrated LED Lighting
- Frameless Windows
- Pet-Link™ Multi-Purpose Tie-Down
- Remote Fuel Filling Station with Auxiliary Fuel Tank, Pump and Nozzle
- Garage Drop-Down Zero-G® Ramp Door, Snap-In Patio System & Power Patio Awning
- Three Seasons Patio Doors with Screen and Tinted Privacy Panels
- 8,000-lb. Trailer Hitch with 7-pin Round Connector

CONSTRUCTION & EXTERIOR OPTION

- Frameless Dual Pane Windows

AUTOMOTIVE & COCKPIT

- 10.1" Touchscreen Dash Radio with Bluetooth®, Axerra™ Navigation and SiriusXM® Radio
- Back-Up Monitor
- Heated/Remote Exterior Mirrors with Integrated Side View Cameras
- Reclining/Swivel Leatherette Captain's Chairs with Stow-Away Coffee Table
- Power Adjustable Driver's Seat
- Emergency Engine Start Switch
- Power Solar & Privacy Shades on Windshield

- Manual Roller Shades on Side Windows
- 22.5" Tires with Aluminum Wheels
- Valve Stem Extenders on Rear Wheels
- Dash Workstation with 110-volt & 12-volt Outlets
- Power Drop-Down Hide-Away Overhead Bunk with Cotton Cloud™ Mattress & Bunk Ladder

INTERIOR

- Residential Vinyl Flooring
- LED Lighting
- High-Gloss Glazed Solid Wood Flat Panel Cabinet Doors with Nickel Finish Hardware
- Leatherette Sofa Bed (38MB)
- Leatherette Dream Dinette® Booth with Cup Holders
- Tread Plate Non-Slip Flooring, Tie Down Rings & Workshelf Storage Cabinet in Garage
- 12-volt Attic Fan in Garage
- Double Door Residential Refrigerator
- 2-Burner High-Output Gas Range Top with Single Induction Cooktop
- 30" Over-the-Range Stainless Steel Convection Microwave Oven
- Solid Surface Countertops & Sink Cover
- Queen Size Bed with Bedspread and Pillow Shams
- Queen Size Bed Drop-Down Bunk in Garage (38MB)
- Mattress Covered Sky Bunk™ (37RB)
- 40" TV in Living Area (38MB)
- 32" TV in Living Area (37RB)
- Blu-Ray Player in Living Area
- 32" TV in Bedroom
- 40" TV in Garage (38MB)

- 28" TV in Garage (37RB)
- Exterior 40" TV on Manual Swivel with Soundbar and Radio
- TV Ready in Sky Bunk™ (37RB)
- USB Charging Ports - Bedroom & Living Area
- Winegard® Connect™ 2.0 4G LTE Router & WiFi Extender

INTERIOR OPTIONS

- Two (2) Opposing Jack-Knife Sofas in Garage

ELECTRICAL & PLUMBING

- Onan® RV QG 5500 Gas Generator
- Automatic Generator Start
- 50-amp Shoreline Power Cord
- Multiplex Wiring Control System with 7" Touchscreen
- Dual 13,500 BTU Low Profile Roof Air Conditioners
- 5,000 BTU Air Conditioner in Garage (37RB)
- 6,000 BTU Air Conditioner with Remote in Garage (38MB)
- Four (4) Auxiliary House Batteries
- 1800-watt Inverter
- 55-amp Converter
- Exterior LP Connection
- Solar Prep - Includes Solar Controller
- Enclosed & Heated Holding Tanks
- 360° Siphon® RV Holding Tank Vent Cap
- Black Tank Flush System
- Outside Shower

For a complete listing of available features, visit thormotorcoach.com/outlaw-class-a.

Class C Featured Highlights

CONSTRUCTION & EXTERIOR

- Ford® E-Series Chassis - 6.8L Triton® V10, 305HP & 420 lb.-ft. Torque - TorqShift® 6-Speed Automatic Transmission
- Automatic Leveling Jacks with Touchpad Controls
- HD-MAX® Exterior with Graphics Package
- Power Patio Awning with Integrated LED Lighting
- Frameless Windows
- Drop-Down Ramp Door, Patio Deck Railings & Manual Patio Awning (29J)
- Drop-Down Ramp Door (29S)
- Stainless Steel Storage Cabinet in Garage
- Tread Plate Non-Slip Flooring in Garage
- Bug Screen Curtain in Garage
- Removable Interior/Exterior Table for Garage & Patio
- 8,000-lb. Trailer Hitch with 7-pin Round Connector

AUTOMOTIVE & COCKPIT

- Touchscreen Dash Radio with Back-Up Monitor
- SiriusXM® Radio Tuner & Antenna
- Heated/Remote Exterior Mirrors with Integrated Side View Cameras
- Swivel Leatherette Captain's Chairs with Filler Cushions
- Emergency Engine Start Switch
- Valve Stem Extenders
- Stainless Steel Wheel Liners
- Aluminum Running Boards

INTERIOR

- Leatherette Comfort Lounge Sofa & Removable Pedestal Tables (29J)
- Leatherette Sofa in front of Murphy Bed (29S)
- Leatherette Jack-Knife Sofa (29J)
- Pressed Laminate Countertops
- 12-volt Attic Fan with Cover in Cab-Over

- Queen Size Powered Drop-Down Bunk in Garage (29J)
- Shower with Anti-Bacterial Shower Curtain
- Double Door Gas/Electric RV Refrigerator with Smoked Acrylic Panel Inserts
- Recessed 3-Burner Gas Cooktop with Glass Cover
- Convection Microwave Oven
- 12-volt Vent in Kitchen
- 40" TV on Manual Swivel
- 32" TV in Living Area & Garage (29U)
- Exterior 32" TV on Manual Swivel Bracket & Bluetooth® Sound Bar
- HDMI Video Distribution Box
- Bluetooth® Coach Radio System in Garage
- Garage USB Charging Port
- Wall Cubby with Net & USB Charging Port
- Winegard® Connect™ 2.0 4G LTE Router & WiFi Extender
- 32" TB Bedroom (29S)

INTERIOR OPTION

- Cab-Over Child Safety Net

ELECTRICAL & PLUMBING

- Onan® RV QG 4000 Gas Generator
- 30-amp Shoreline Power Cord
- 13,500 BTU Front Roof Air Conditioner
- 5,000 BTU Air Conditioner in Garage
- Secondary Auxiliary House Batteries
- 1,000-watt Entertainment Inverter
- Exterior LP Connection
- Solar Prep - Includes Solar Controller
- Black Tank Flush System
- 360° Siphon® RV Holding Tank Vent Cap
- Holding Tanks with Heat Pads
- Rapid Camp® Wireless Control System

For a complete listing of available features, visit thormotorcoach.com/outlaw-class-c.

	CLASS A				
	37RB	38MB	37RB	38MB	
Chassis	Ford	Ford	Fuel (gal)	80	80
Gross Vehicle (GVWR)	26,000	26,000	LPG (lbs)	105	105
Gross Combined (GCWR)	30,000	30,000	Fresh/Waste/Gray Water (gal)	100 / 40 / 40	150 / 40 / 40
Wheel Base	252"	262"	Water Heater	Tankless	Tankless
Exterior Length	38'-10"	39'-9"	Furnace (BTUs)	35,000	35,000
Exterior Height (w/AC)	13'-3"	13'-3"	Exterior Storage Capacity (cu. ft.)	127	105
Exterior Width (w/o mirrors)	101"	101"	Garage Capacity (lbs)	1,800	1,600
Interior Height (living area)	80'-97"	80'-97"	Patio Capacity (lbs)	1,500	1,500
Awning Size	9' & 13'	9' & 15'	Ramp Capacity (lbs)	3,000	3,000

	CLASS C				
	29J	29S	29J	29S	
Chassis	Ford	Ford	Fuel (gal)	55	55
Gross Vehicle (GVWR)	14,500	14,500	LPG (lbs)	40.9	40.9
Gross Combined (GCWR)	22,000	22,000	Fresh/Waste/Gray Water (gal)	40 / 30 / 29 / 34.5	39 / 29 / 30
Wheel Base	219"	219"	Water Heater	Tankless	Tankless
Exterior Length	31'-1"	31'-3"	Furnace (BTUs)	19,000	19,000
Exterior Height (w/AC)	10'-10"	10'-10"	Exterior Storage Capacity (cu. ft.)	17.2 (Plus Garage)	22 (Plus Garage)
Exterior Width (w/o mirrors)	99"	99"	Garage Capacity (lbs)	1,000	800
Interior Height (living area)	84"	84"	Patio Capacity (lbs)	1,500	N/A
Awning Size	16'	21'-6"			



IMPORTANT—PLEASE READ: This brochure reflects product design, fabrication, material, components and specifications at the date of printing, which date is disclosed below. Please visit us online at ThorMotorCoach.com or consult with your selling dealership for the latest in standards, options, specification and technical information. Photographs in the brochure may depict optional equipment or may only be available in certain floor plans. Components, appliances and the chassis may have been manufactured in a calendar year before the vehicle's designated model year. All capacities are approximate. The actual length of the vehicle may differ from that indicated in the brochure due to variances in the manufacturing processes and/or installed components. All dry weights are based on standard model features and do not include optional features or equipment. Component part and appliance manufacturers issue limited warranties covering portions of the vehicle not covered under the limited warranty we issue. Copyright Thor Motor Coach, Inc. © MY 05/01/2019

Made to fit.

P.O. Box 1486, Elkhart, IN 46515 Sales Department: 800.860.5658

thormotorcoach.com/outlaw

