

LIBERTY & MAPLE LEAF ■ ULTRA LITE ■ PILOT

ULTRA LITE TRAVEL TRAILERS

# FREEDOM *Express*



FREEDOM TO EXPLORE



LIBERTY & MAPLE LEAF ■ ULTRA LITE ■ PILOT





# FREEDOM *Express*

## Freedom to Choose

Escape from everyday life with Freedom Express Ultra Lite laminated travel trailers. These ultra lites are value-packed with industry leading features, and are designed for towing with today's popular half-ton pick-up trucks and SUVs. All models are built with durable, lightweight Azdel composite panels that withstand rot, mold and water damage for years of worry-free use. By constantly innovating, Freedom Express has repeatedly won the prestigious DSI Award.

Explore our selection for the ultimate in safety and reliability:

**Liberty and Maple Leaf Editions** - include high end amenities usually reserved for travel trailers and fifth wheels costing thousands more.

**Freedom Express Ultra Lites** - Packed with industry leading features

**Pilots** - Single axle towables, loaded with amenities

**Blast Toy Haulers\*** - Versatile half-ton towables for active lifestyles

**Select\*** - Value added light weights

\*For more information on Blast Toy Haulers and the Select Series, see separate two page literature.

## Construction Features

### Stable-Ryd® Suspension

- Spread axle improves weight distribution.
- Wide track axles provide a wider, more secure stance on the road.
- Spread axle design allows us to reduce the tongue weight for optimum performance.
- Spread axle design reduces sway caused by crosswinds.

### Lightweight

- Laminated sidewalls and floor
- Azdel behind the fiberglass
- Bow trusses aluminum and wood
- Rod and angle crossmembers in frame
- All tanks mounted under floor to lower center of gravity and improve interior storage.

### Aerodynamic

- Aerodynamic front profile (Cuts through the air)
- Enclosed underbelly reduces turbulence/drag. (Select models)



*Liberty and Maple Leaf Editions feature a Gel Coat Fiberglass cap.*

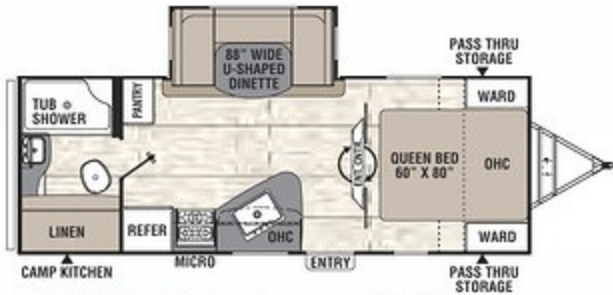
1. 3M breathable graphics
2. Tinted, safety glass windows
3. Crowned trusses
4. Aluminum reinforced with 3/8" roof decking
5. EPDM bright white rubber roofing
6. Azdel composite panels
7. Aerodynamic front profile
8. Dual 20 lb. LP gas tanks
9. Welded aluminum structure, vacuum-bonded sidewalls and flooring
10. Smooth exterior fiberglass skin
11. Aluminum framed openings
12. Fully enclosed, heated underbelly
13. Fully welded tubular aluminum floor structure
14. Happijac SureTrac™, rack and pinion, and Schwintek slide systems
15. Congoleum Designer Carefree Resilient Flooring
16. Powder E-coated, welded I-beam frame
17. Super-Lube® axle hubs
18. Stable-Ryd® spread axle design (25' and above)
19. Nitrogen filled radial tires

## Lightweight Towability and Enhanced Aerodynamics

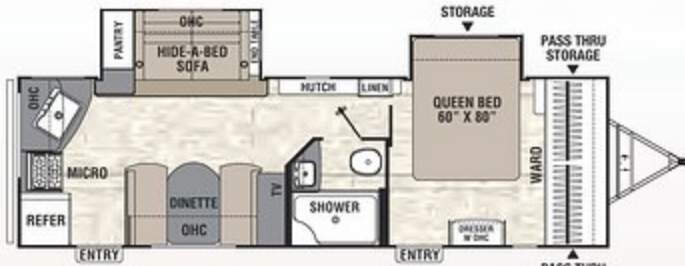
Freedom Express Ultra-Light travel trailers are ideal for half-ton tow vehicles and optimized fuel efficiency. Designed with fully laminated, aluminum framed walls and floor, these travel trailers are incredibly lightweight and durable.

# FREEDOM EXPRESS LIBERTY & MAPLE LEAF EDITIONS

## LIBERTY MAPLE LEAF



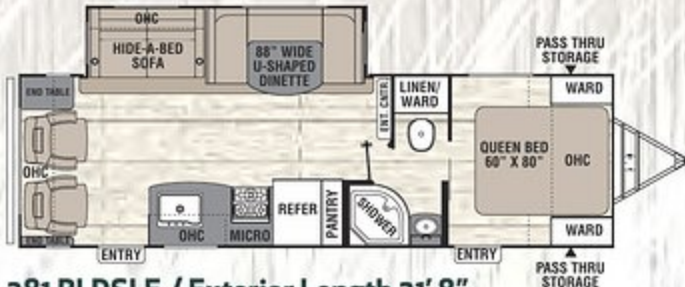
231 RBDSLE / Exterior Length 26' 10"



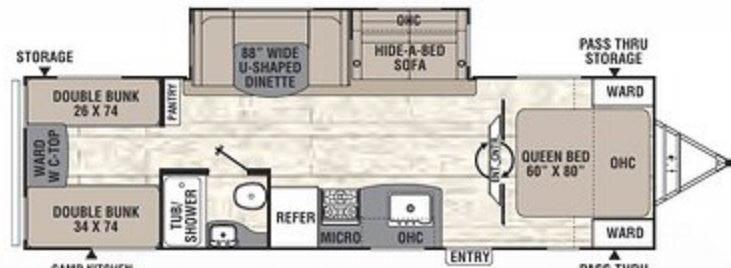
276 RKDSLE / Exterior Length 31' 6"



279 RLDSE / Exterior Length 31' 11"



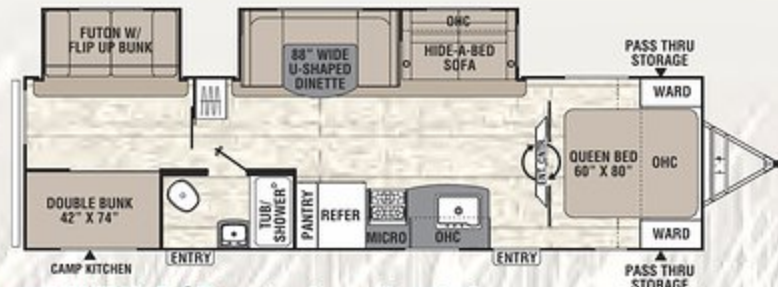
281 RLDSE / Exterior Length 31' 8"



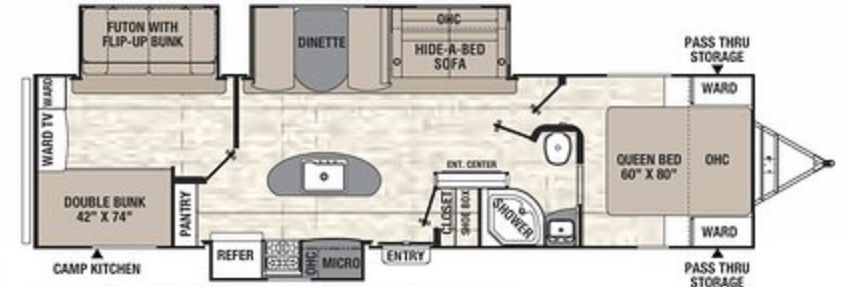
292 BHDSLE / Exterior Length 33' 5"



293 RLDSE / Exterior Length 35' 11"



310 BHDSLE / Exterior Length 35' 7"



320 BHDSLE / Exterior Length 36' 11"



321 FEDSLE / Exterior Length 36' 11"



323 BHDSLE / Exterior Length 36' 11"



324 RLDSE / Exterior Length 36' 11"

## FREEDOM TO EXPLORE

Deep Slides	231 RBDSLE	276 RKDSLE	279RLDSLE	281 RLDSE	292 BHDSLE	293 RLDSE	310 BHDSLE	320 BHDSLE	321 FEDSLE	323 BHDSLE	324RLDSLE
UVW*	5,268	6,365	5,929	6,369	6,622	7,851	7,454	7,952	7,906	7,878	8,328
Hitch Weight	645	791	741	821	747	985	937	879	1,071	1,126	1,132
Carrying Capacity	2,232	1,235	1,231	1,178	1,216	2,049	2,446	2,548	2,594	2,622	2,172
Exterior Length (Bumper to Hitch)	26' 10"	31' 6"	31' 11"	31' 8"	33' 5"	35' 11"	35' 7"	36' 11"	36' 11"	36' 11"	36' 11"
Exterior Height (Includes A/C)	10' 9"	10' 9"	10' 9"	10' 9"	10' 7"	11' 2"	11'	11' 2"	11' 2"	11' 2"	11'
Interior Height (Coach)	81"	81"	81"	81"	81"	81"	81"	81"	81"	81"	81"
Awning Length	14'	20'	20'	18'	18'	12' and 10'	18'	20'	17'	15'	10' & 12'
Fresh/Grey/Waste Water Cap. (gal.)	49/33/33	49/66/33	49/33/33	49/33/33	49/33/33	49/33/33	49/33/33	49/66/33	49/66/33	49/66/33	49/33/33
Tire Size	ST205/75R14D	ST205/75R14D	ST205/75R14D	ST205/75R14D	ST205/75R14D	ST225/75R15E	ST225/75R15E	ST225/75R15E	ST225/75R15E	ST225/75R15E	ST225/75R15E

\*Unloaded vehicle weights do not include options. Please refer to back cover for definitions of chart descriptions.



Freedom Express is TRA gold level rated. As a certified green RV, Freedom Express utilizes effective production techniques in combination with healthy materials, plus efficient usage of energy and water to produce a high quality RV with less environmental impact.

# FREEDOM Express

**LIBERTY  
MAPLE LEAF**



*Liberty and Maple Leaf Editions Include the Freedom Value Package (Page 9), PLUS these Upgrades:*

### Liberty/Maple Leaf Edition Package (Upgrade)

- Two Exclusive Liberty Décors - Walnut & Teak
- Exclusive Liberty/Maple Leaf Edition Graphics
- Gel Coated Fiberglass Cap with LED Hitch and Marker Lights
- Front Rock Guard on Cap
- Five Point Electric Stabilizer System
- Adjustable Aluminum Solid Steps (N/A 321FEDSLE)
- Slam Latch Baggage Doors on Pass through Storage
- Enclosed and Heated Gate Valves
- Enclosed Central Control Panel for Switches and Gauges
- Raised Panel Glazed Mesa Maple Upper Cabinet Doors
- Solid Surface Kitchen Countertop
- Undermount Stonecast Sink
- Solid Surface Sink Covers
- Subway Tile Backsplash
- Residential Pull-Out Faucet
- Decorative Light Over Dinette & Matching Wall Sconce

- Hide-A-Bed Sofa
- Pull-out Drawers Under Dinette
- Designer Bedspread
- Electric Fireplace (NA 276 RKDSLE)
- Larger 8 Cu. Ft. Refrigerator

### Additional Options

- Winegard WiFi & 4G LTE Extender
- 10.7 Cu. Ft. 12 Volt Refrigerator
- Radiant/Thermal Barrier Package
- Ladder
- Outdoor Grill Station (Standard on Camp Kitchen & 293RLDSLE)
- 15,000 BTU Roof Air Conditioner
- 50 AMP Service w/ 2nd A/C Prep
- Second 15K Roof A/C (Requires 50 AMP Prep)
- Frameless Windows
- Free Standing Table w/4 Chairs
- Canadian Compliance

DECOR



*The 320 BHDSLE bunkhouse model is loaded with storage. Kids enjoy climbing the Rock Blocks to the upper bunk. The large entry closet provides plenty of shelving for shoes, extra gear and a waste basket.*

*This popular 320 BHDSLE outdoor kitchen comes complete with a refrigerator, Coleman grill, TV outlet, storage, plus a sink with hot and cold running water!*





FREEDOM  
TO EXPLORE



The 324 RLDSLE features a spacious island kitchen with opposing slides. Generous seating directly across from the large LED TV and fireplace entertainment center provides family and friends with a great place to stretch out and enjoy the game.



This bath has a spacious, over-sized 30" x 36" shower and abundant storage.



The 320 BHDSLE is loaded with storage and high end amenities in a lightweight package.



The 320 BHDSLE has plenty of sleeping space, including this queen bedroom complete with a stylish rustic shiplap back wall, reading lights, speakers, full length wardrobes and overhead cabinet storage.

Freedom Express' Fully Walkable Roof makes trailer maintenance and inspections safe and easy.



# FREEDOM Express

**LIBERTY**

**MAPLE LEAF**

**ULTRA LITE**



This Stone Cast Sink with a pull-out faucet, fits large pots and pans. Made in the U.S.A. with a limited lifetime guarantee.



Seamless Edge Countertops are standard on Freedom Express. Solid surface countertops are standard on Liberty.



- 50% Lighter than wood
- No rot, mold or water damage
- R-2 thermal insulation
- Odorless, no formaldehyde
- Sound and energy absorbing
- Impact and puncture resistant
- Made in USA



Full-size Pull-out Drawers for easy access dinette storage on all Liberty models.



Exclusive Utensil Drawer for convenient storage of camping's basic necessities.



Foldable Dinette Table can be used indoors or outdoors and converts to a sleeping area



NEW Furrion Stove and Cooktop with integrated flush mount glass cover adds style and is easy to use



Elegant LED Accent Lighting throughout.



Optional Power Stabilizers extend and retract in record time. (Standard on Liberty and Maple Leaf models)



All Freedom Express Travel Trailers have 60" x 80" Queen Beds.



Sink Cover adds counter space - standard in both Liberty and Ultra Lite.



Centralized Control Panel indicates tanks, battery levels and operating components.

**FREEDOM TO EXPLORE**

*Features and Options listed above may not be available on all models.*

# STANDARD FEATURES & OPTIONS



Stay connected with the all new WiFi Extender and 4G LTE Antenna.



Custom-made Medicine Cabinet with added Shelf and Deluxe Robe Holder.



Solid fold-in steps on Liberty and Maple Leaf Models (N/A on 321 FEDS)



Fully Lighted Pass-thru Storage with a 24" x 48" outdoor resin table stored above.



The 81" Interior Height creates an open feeling with plenty of large storage space in overheads and slide rooms. Bunk rock climbing blocks make bedtime fun.



Porcelain Foot Flush Toilet.



40" LED HD Television.



Vacuum Bonded Walls with Azdel.



Stable Ryde Spread Axles provide better weight distribution, handling and improved towing.



The Power Tongue Jack is the safe, easy way to raise and lower your hitch, optional on Ultra Lites.



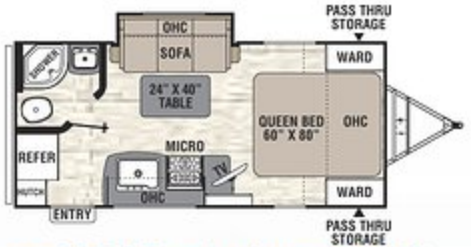
5-Point stabilizing Power Tongue Jack system, is standard on Liberty and Maple Leaf Editions.



# FREEDOM *Express*

**ULTRA LITE**

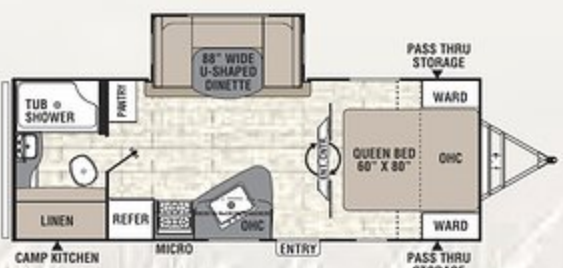
FREEDOM EXPRESS ULTRA LITES



**192 RBS / Exterior Length 22' 6"**



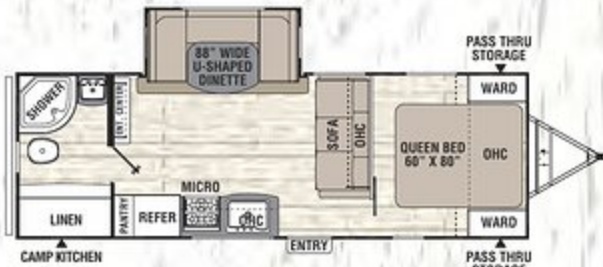
**204 RD / Exterior Length 24' 7"**



**231 RBDS / Exterior Length 26' 10"**



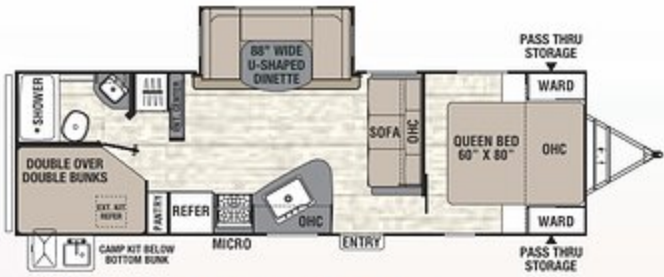
**246 RKS / Exterior Length 28' 3"**



**248 RBS / Exterior Length 28' 11"**



**257 BHS / Exterior Length 28' 7"**



**275 BHS / Exterior Length 31' 9"**



**276 RKDS / Exterior Length 31' 6"**



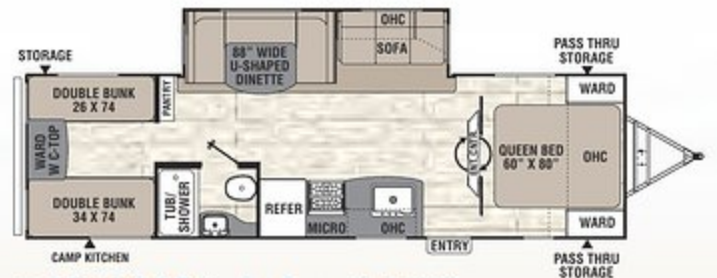
**279 RLDS / Exterior Length 31' 11"**



**281 RLDS / Exterior Length 31' 8"**



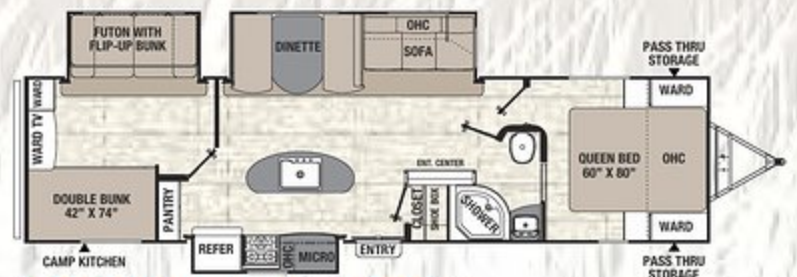
**287 BHDS / Exterior Length 32' 11"**



**292 BHDS / Exterior Length 33' 5"**



**310 BHDS / Exterior Length 35' 7"**



**320 BHDS / Exterior Length 36' 11"**



**323 BHDS / Exterior Length 36' 11"**





## Find Your Freedom – Ultra Lite Towability and Convenience

Freedom Express Ultra Lites have been designed for easy towing with today's half ton trucks, cross overs and mid-sized SUVs. All tanks are located under the floor to lower the center of gravity for increased storage capacity and improved handling.



204 RD shown in Cashew decor.

### Freedom Value Package (Required):

- ¾ Gel Coated Fiberglass Front Cap with LED Lights
- Aluminum Wheels
- Spare Tire Kit
- Detachable Power Cord
- Electric Power Awning w/ LED Light Strip
- Magnetic Catches Compartment Doors
- Tinted Safety Glass Windows
- Front Diamond Plate
- TV & Radio Antenna with Booster
- E-Z Lube Axles
- Spread Axle Design\*
- 13,500 BTU Roof Air Conditioner
- Heated Enclosed Underbelly\*
- Solar Port

- XL Folding Entry Assist Handle
- Exterior Shower Station
- Winterize Ready Kit
- Black Tank Flush
- 2 Exterior Speakers, 4 Interior Speakers
- Ducted Furnace\*
- Ducted Ceiling Air Conditioning\*
- AM/FM/CD/DVD/Bluetooth Receiver
- LED TV
- Satellite Ready
- LED Interior Lighting
- Night Shades
- Congoleum Designer Carefree Flooring
- Mortise and Tenon Cabinet Doors
- Stonecast Sink

- Sink Covers
- Microwave
- Oven with Glass Top 3 Burner Cooktop
- 6 Cu. Ft. Two Door Refrigerator
- Silverware Drawer\*\*
- 60" x 80" Queen Bed
- Skylight in Bath
- 12" LED Step Light
- LED Light Strip in Pass-through Storage
- 24" x 48" Resin Outdoor Table
- USB Ports in Master & Bunk Rooms
- Porcelain Foot Flush Toilet
- Backup Camera Prep
- Battery Quick Disconnect
- RVIA Seal

### Additional Options

- Winegard WiFi & 4G LTE Extender
- 15,000 BTU Roof Air Conditioner
- 50 Amp Service with Second A/C Prep
- Push-button Power Stabilizer Jacks\*
- Power Tongue Jack
- Outdoor Grill Station\*\*
- Sofa Hide-A-Bed\*\*
- Frameless Windows
- Ladder (N/A 271BL, 283BL & 301BLDS)
- 8 Cu. Ft. Two Door Refrigerator
- Radiant/Thermal Barrier Pack
- Free Standing Dinette with 4 chairs
- Canadian Compliance

\*Not available on models under 25'

\*\*Select Models Only

Freedom Express	192 RBS	204 RD	231 RBDS	246 RKS	248 RBS	257 BHS	275 BHS	276 RKDS	279 RLDS	281 RLDS	287 BHDS	292 BHDS	310 BHDS	320 BHDS	323 BHDS
UVW*	4,142	4,049	5,074	4,700	5,574	5,263	5,881	6,089	5,802	6,003	6,314	6,426	7,245	7,734	7,660
Hitch Weight	454	490	585	500	728	671	715	730	700	712	660	738	865	820	1,038
Carrying Capacity	1,858	1,906	2,426	2,300	1,926	2,231	1,719	1,511	1,798	1,597	1,286	1,274	2,655	2,766	2,840
Exterior Length (Bumper to Hitch)	22' 6"	24' 7"	26' 10"	28' 3"	28' 11"	28' 7"	31' 9"	31' 6"	31' 11"	31' 8"	32' 11"	33' 5"	35' 7"	36' 11"	36' 11"
Exterior Height (Includes A/C)	10' 3"	10' 3"	10' 9"	10' 4"	10' 9"	10' 9"	10' 9"	10' 9"	10' 9"	10' 9"	10' 9"	10' 9"	11'	11' 2"	11' 2"
Interior Height (Coach)	81"	81"	81"	81"	81"	81"	81"	81"	81"	81"	81"	81"	81"	81"	81"
Awning Length	14'	16'	14'	18'	16'	20'	16'	20'	20'	18'	18'	18'	18'	20'	15'
Fresh/Grey/Waste Water Cap. (gal.)	49/33/33	49/33/33	49/33/33	49/33/33	49/33/33	49/33/33	49/33/33	49/66/33	49/33/33	49/33/33	49/66/33	49/33/33	49/33/33	49/66/33	49/66/33
Tire Size	ST205/75R14D	ST205/75R14D	ST205/75R14D	ST205/75R14D	ST205/75R14D	ST205/75R14D	ST205/75R14D	ST205/75R14D	ST205/75R14D	ST205/75R14D	ST205/75R14D	ST205/75R14D	ST205/75R14D	ST225/75R15E	ST225/75R15E

\*Unloaded vehicle weights do not include options. Please refer to back cover for definitions of chart descriptions.



FREEDOM  
TO EXPLORE

Friends and family appreciate this private master suite and double-over-double bunks. It's great for entertaining with large counters, an 88" dinette and an outside kitchen. 287 BHDS shown in Harbor decor.

There's plenty of room for all your gear, food, coats, shoes, or whatever your adventure requires, with the expansive walk-in closet located at the entry of the 287 BHDS.



# FREEDOM

ULTRA LITE *Express*



HARBOR



CASHEW

DECOR



# FREEDOM PILOT *Express*

## Pilot Freedom Value Package

(Required):

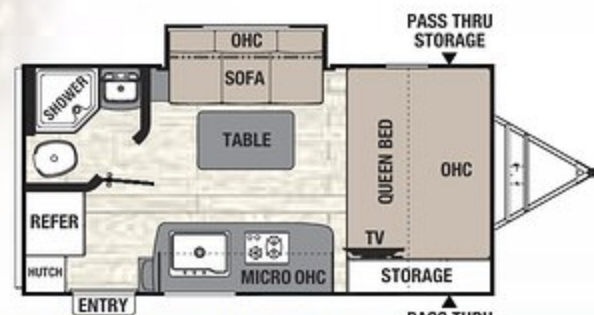
- 3/4 Gel Coated Fiberglass Front Cap with LED Lights
- Aluminum Wheels
- Spare Tire Kit
- Detachable Power Cord
- Electric Power Awning w/ LED Light Strip
- Magnetic Catches Compartment Doors
- Tinted Safety Glass Windows
- Front Diamond Plate
- TV & Radio Antenna with Booster
- E-Z Lube® Axles
- Enclosed Underbelly
- Solar Port
- XL Folding Entry Assist Handle
- Exterior Shower Station
- Winterize Ready Kit
- Black Tank Flush
- 2 Exterior Speakers, 4 Interior Speakers
- AM/FM/CD/DVD/Bluetooth Receiver
- LED TV
- Satellite Ready
- LED Interior Lighting
- Night Shades
- Congoleum Designer Carefree Flooring
- Mortise and Tenon Cabinet Doors
- Stonecast Sink
- Sink Covers
- Microwave
- 2 Burner Cooktop
- Butcher Block Stove Cover
- 6 Cu. Ft. Two Door Refrigerator
- Silverware Drawer\*

- 60" x 80" Queen Bed
- Skylight in Bath
- 12" LED Step Light
- LED Light Strip in Pass-through Storage
- 24" x 48" Resin Outdoor Table
- USB Ports in Master & Bunk Rooms
- Porcelain Foot Flush Toilet
- Backup Camera Prep
- Battery Quick Disconnect
- RVIA Seal

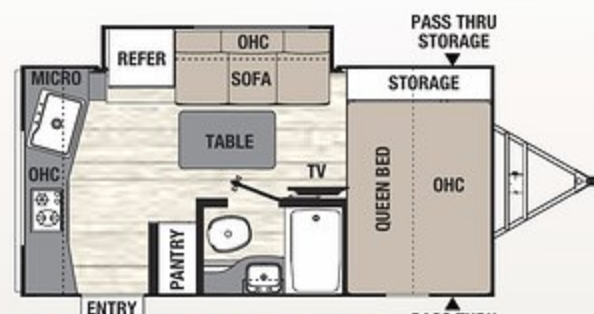
### Additional Options

- Winegard WiFi & 4G LTE Extender
- 15,000 BTU Roof Air Conditioner
- Power Tongue Jack
- Coleman High-Output Grill
- Frameless Windows
- Ladder
- Radiant/Thermal Barrier Pack
- Canadian Compliance

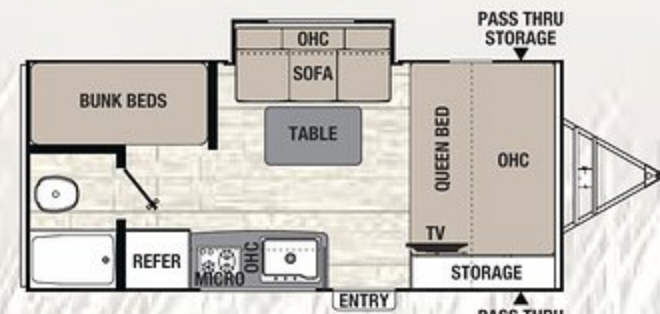
\*Select Models Only



19 FBS / Exterior Length 20'



19 RKS / Exterior Length 20'



20 BHS / Exterior Length 22'



Pilot models include this well-planned storage area

Freedom Express Pilot Editions	19FBS	19RKS	20BHS
UVW*	3,695	3,820	3,883
Hitch Weight	406	468	445
Carrying Capacity	1,105	980	917
Exterior Length	20'	20'	22'
Exterior Height	10' 6"	10' 6"	10' 6"
Interior Height	81"	81"	81"
Awning Length	12'	12'	12'
Fresh/Grey Waste Water Capacity (gal.)	49/33/33	49/33/33	49/33/33
Tire Size -ST225/75R15D	■	■	■

\*Unloaded vehicle weights do not include options. See below for definitions of chart descriptions.

VINYL

HARBOR

CASHEW



FREEDOM TO EXPLORE

# FREEDOM Express



ULTRA LITE TRAVEL TRAILERS ■ DEEP SLIDES ■ TOY HAULERS

Find out why Freedom Express has become one of the most demanded ultra lite towable RV brands on the market today!

For more information on Blast Toy Haulers and the Select Series, see separate two page literature.



### Coachmen Interactive Mobile Manuals

Download your Coachmen mobile app or visit our dynamic online manual to enhance your ownership experience.

These interactive options provide incredible ease and insight into use, maintenance and enjoyment of your Coachmen product.

Ranging from "How-To" videos, pictures and illustrations of various components, systems and features to fully searchable content and downloadable PDFs for individual component owner's manuals, answers are always just a click away.



423 N. Main Street ♦ P.O. Box 30 ♦ Middlebury, IN 46540  
To learn more about Coachmen RV and our products and see how Coachmen is making the easy life easier, visit [www.coachmenrv.com](http://www.coachmenrv.com) or call 1.800.353.7383.



Freedom Express has Won the Annual DSI Quality Circle Award!

### 24/7 EMERGENCY ROADSIDE ASSISTANCE WITH VEHICLE PURCHASE\*

TOWING  
JUMP-STARTS  
TIRE CHANGES  
FLUID DELIVERY  
LOCKOUT  
SERVICE

WINCH-OUT  
MOBILE MECHANIC  
TECHNICAL  
SUPPORT  
DEALER LOCATOR  
SERVICES



\*VALID FOR 1 YEAR FROM DATE OF PURCHASE



Learn More  
Scan this barcode using a QR Reader on your smart phone to learn more about Forest River.



A Berkshire Hathaway company.



[www.ForestRiverBuyLocal.com](http://www.ForestRiverBuyLocal.com)

**GVWR (Gross Vehicle Weight Rating)** - is the maximum permissible weight of the unit when fully loaded. It includes all weights, inclusive of all fluids, cargo, optional equipment and accessories. For safety and product performance do NOT exceed the GVWR.

**GAWR (Gross Axle Weight Rating)** - is the maximum permissible weight, including cargo, fluids, optional equipment and accessories that can be safely supported by a combination of all axles.

**UVW (Unloaded Vehicle Weight)\*** - is the typical weight of the unit as manufactured at the factory. It includes all weight at the unit's axle(s) and tongue or pin and LP Gas. The UVW does not include cargo, fresh potable water, additional optional equipment or dealer installed accessories.

\*Estimated Average based on standard build optional equipment.

**CCC (Cargo Carrying Capacity)\*\*** - is the amount of weight available for fresh potable water, cargo, additional optional equipment and accessories. CCC is equal to GVWR minus UVW. Available CCC should accommodate fresh potable water (8.3 lbs per gallon). Before filling the fresh water tank, empty the black and gray tanks to provide for more cargo capacity.

\*\*Estimated average based on standard build optional equipment.

Each Forest River RV is weighed at the manufacturing facility prior to shipping. A label identifying the unloaded vehicle weight of the actual unit and the cargo carrying capacity is applied to every Forest River RV prior to leaving our facilities.

The load capacity of your unit is designated by weight, not by volume, so you cannot necessarily use all available space when loading your unit.

All information contained in this brochure is believed to be accurate at the time of publication. However, during the model year, it may be necessary to make revisions and Forest River, Inc., reserves the right to make all such changes without notice, including prices, colors, materials, equipment and specifications as well as the addition of new models and the discontinuance of models shown in this brochure. Therefore, please consult with your Forest River dealer and confirm the existence of any materials, design or specifications that are material to your purchase decision. ©2018 Freedom Express by Coachmen, a Division of Forest River, Inc., a Berkshire Hathaway company. All Rights Reserved. 11/18

Your Freedom Express Dealer