



RUSH

RUSH

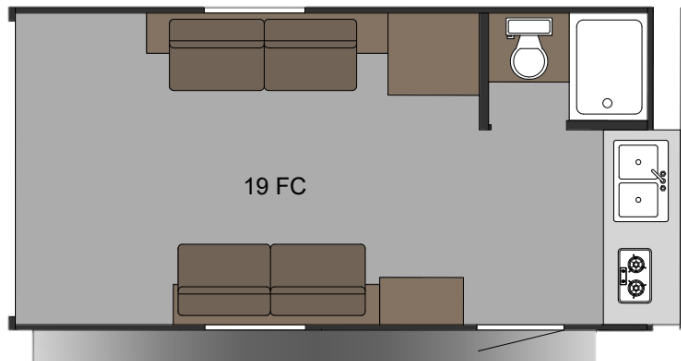
Trust the build, enjoy the experience.



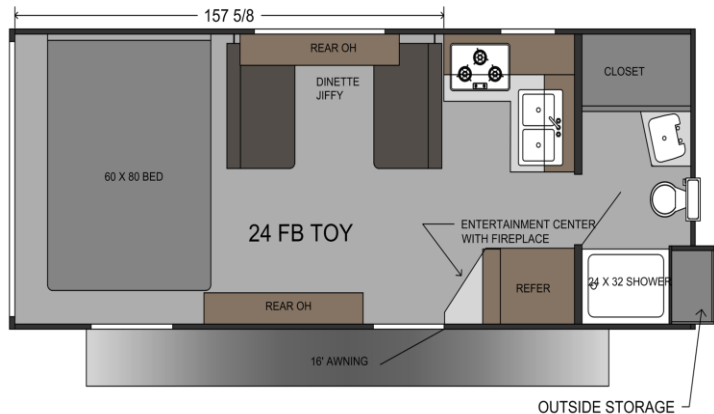
1055 N 625 W.
Shipshewana, IN 46565
www.sunsettrailers.com



19FC



24FB



Construction Standards:

- Wood Studs built 16" On Center
- Marine Grade Floor Decking
- 3/8" Roof decking – FULLY WALKABLE
- .024" Aluminum Siding
- One-piece PVC Roof Membrane
- Residential Insulated Walls & Front Cap
- Diamond Plate Rock Guard
- Powder-Coated Steel Chassis
- Front & Rear Stabilizer Jacks
- Radial Tires
- Spring-Leaf Dexter Axles
- Spare Tire with Carrier
- Solar Prep

Entertainment Standards:

- Backers for TV mount
- LED Lights
- Power Awning
- Dual Cargo Loading Lights

Popular Options

- **Boost Package**
 - Power Tongue Jack
 - Aluminum Rims
 - Rubber Tread in Cargo
 - Magnetic Rear Bug Screen
- **Elite Package**
 - Fantastic Fan
 - Stove & Sink Cover
 - Battery Disconnect
 - Black Tank Flush
- Gas/Electric DSI Water Heater
- Stove w/ Oven Range
- Solid Steps

Comfort Standards:

- A/C & Furnace
- 6 Gallon DSI Gas Water Heater
- 2 Burner Stove Top
- Refrigerator
- Microwave
- Tinted Safety Glass Windows w/ Nightshades
- Quick Connect Gas Line
- Outside Shower
- Fire Extinguisher
- Smoke Detector
- Carbon Monoxide Detector
- 2 – 20 pound LP tanks
- Backup Camera Prep
- Power Vent in the Bathroom
- Power Vent in Cargo Area

SPECIFICATIONS	RUSH	
MODEL	19FC	24FB
TOTAL DRY WEIGHT	3200	4240
HITCH WEIGHT	420	680
LENGTH	20'4"	24'8"
CARGO CARRYING CAPACITY	4220	3440
HEIGHT INCLUDING A/C	9'11"	11"
INTERIOR HEIGHT	6'6"	6'8"
EXTERIOR WIDTH	8'	8'
FRESH WATER (GAL)	53	53
GRAY WATER (GAL)	14	28
BLACK WATER (GAL)	28	14
BOX CARGO LENGTH	10'0"	13'2"
MAX CARGO LENGTH	15'0"	15'2"
WHEEL WELL WIDTH	5'9"	6'11"
GARAGE DOOR OPENING	72"	82"



Dealer:

*Specs, materials, and standards are subject to change without further notice. Some items shown are options and priced accordingly. Visit www.sunsettrailers.com or contact your local Sunset Park RV Dealer for more information.