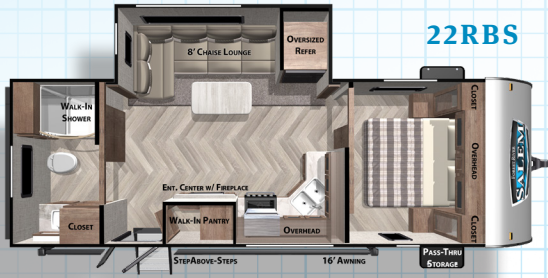
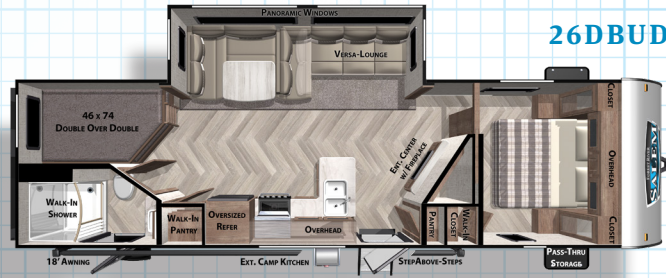


# FOREST RIVER SALEM





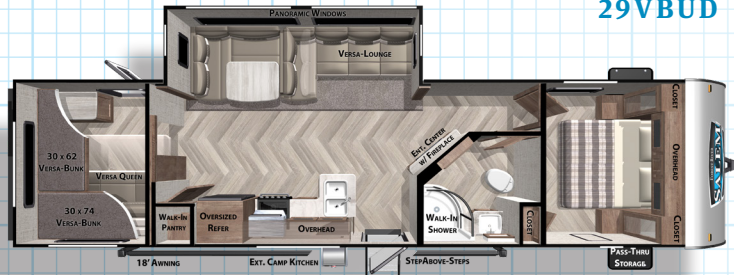
22RBS



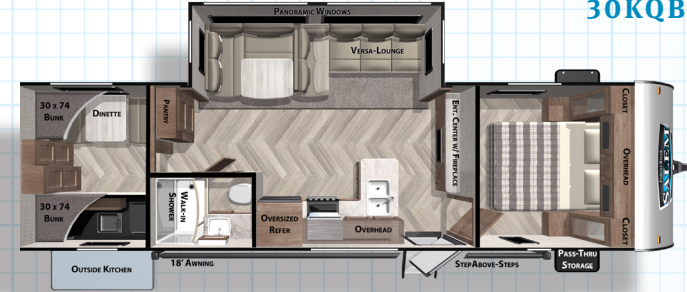
26DBUD



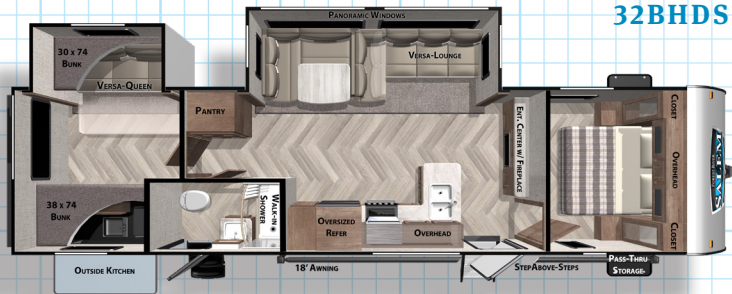
27



29VBUD



30KQBSS



32BHDS



32RET



34MBS



36VBDS

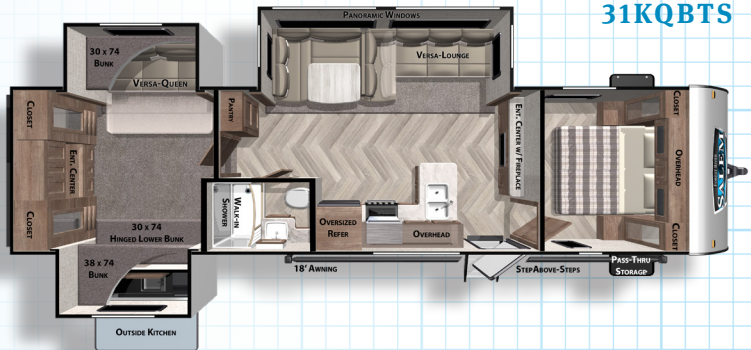
For more info, pictures & 360 Tours, visit [www.forestriverinc.com/Salem](http://www.forestriverinc.com/Salem)

27RE

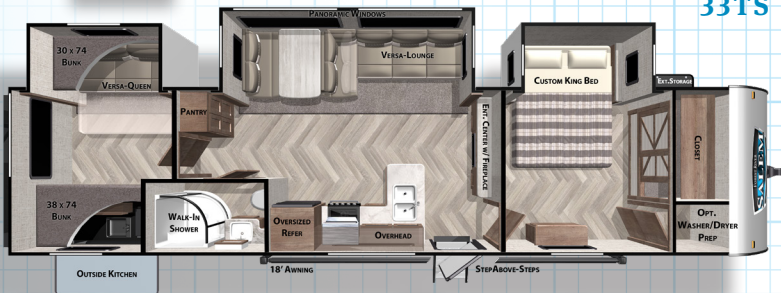


27RK

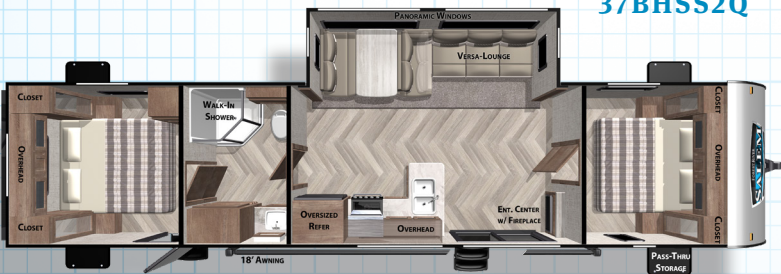
31KQBS



33TS



37BHSS2Q



## BEST IN CLASS VALUE PACKAGE

- » Upgraded Designer Furniture Package
- » Extra Large Panoramic Window Package in Main Slide
- » MORryde™ StepAbove Triple Step (Main Door Only) (N/A 36VBDS & 37BHSS2Q)
- » Large Capacity 11 CU FT Frost-Free Refrigerator (12-volt)
- » Accent Lighting Package (Awning & Over Main Slide-Out)
- » Seamless Countertops (No T-Mold)
- » 20.3 CU FT of Stow N Go Storage (Bed, Dinette & Sofa) (22RBS 17 CU FT)
- » Green PKG: Furrion Solar Prep & LED Mushroom Lights
- » Heated & Enclosed AccessBelly (w/ Removable Underbelly Panels)
- » Modern Cloth Roller Shades w/ AutoStop
- » Power Awning w/ Adjustable Legs
- » Power Tongue Jack w/ LED Light
- » True Stabilizer Jacks w/ JT StrongArms
- » 30" Built-In Electric Fireplace (Heater)
- » (2) Zone Residential Soundbar (FM, Bluetooth, HDMI & USB)
- » Ext. Convenience PKG: Friction Hinge & Baggage Door Magnets
- » Stainless Steel Roll Up Sink Cover
- » Slide-Out Awning Prep
- » WiFi Prep
- » Black Tank Flush
- » Designated CPAP Storage
- » Versa Lounge (Most Models)



Dinette

Chaise Lounge

Full bed



27RK

	22RBS	26DBUD	27RE	27RK	29VBUD	30KQBSS	31KQBS	32BHDS	32RET	33TS	34MBS	36VBDS	37BHSS2Q
HITCH WEIGHT:	785 lb.	795 lb.	955 lb.	955 lb.	910 lb.	899 lb.	905 lb.	859 lb.	935 lb.	1088 lb.	1015 lb.	1155 lb.	970 lb.
UVW:	5928 lb.	6923 lb.	7583 lb.	6863 lb.	7728 lb.	6943 lb.	8573 lb.	7993 lb.	8853 lb.	9276 lb.	8543 lb.	8533 lb.	7659 lb.
CCC:	1837 lb.	2672 lb.	2332 lb.	1092 lb.	1982 lb.	2756 lb.	1292 lb.	1826 lb.	2282 lb.	2012 lb.	2672 lb.	1582 lb.	2271 lb.
EXTERIOR LENGTH:	26' 11"	33' 3"	33' 8"	33' 6"	36' 2"	33' 6"	36' 7"	36' 5"	37'	36' 9"	36' 10"	36' 11"	38' 10"
EXTERIOR HEIGHT:	11' 3"	11' 3"	11' 5"	11' 3"	11' 3"	11' 3"	11' 5"	11' 3"	11' 5"	11' 5"	11' 5"	11' 5"	11' 3"
EXTERIOR WIDTH:	96"	96"	96"	96"	96"	96"	96"	96"	96"	96"	96"	96"	96"
FRESH WATER:	40 gal.	40 gal.	40 gal.	40 gal.	40 gal.	40 gal.	40 gal.	40 gal.	40 gal.	40 gal.	40 gal.	40 gal.	40 gal.
GRAY WATER:	58 gal.	60 gal.	58 gal.	56 gal.	60 gal.	58 gal.	41 gal.	58 gal.	58 gal.	39 gal.	58 gal.	28 gal.	30 gal.
BLACK WATER:	30 gal.	30 gal.	39 gal.	30 gal.	30 gal.	28 gal.	28 gal.	30 gal.	39 gal.	28 gal.	39 gal.	39 gal.	28 gal.
AWNING SIZE:	16'	18'	11' & 9'	20'	18'	18'	18'	18'	11' & 12'	18'	14' & 11'	18'	18'

# SALEM PRODUCT FAMILY



FSX

CRUISE LITE

SALEM

VILLA / GRAND VILLA

HEMISPHERE



## 24/7 EMERGENCY ROADSIDE ASSISTANCE WITH VEHICLE PURCHASE\*

TOWING  
JUMP-STARTS  
TIRE CHANGES  
FLUID DELIVERY  
LOCKOUT  
SERVICE

WINCH-OUT  
MOBILE MECHANIC  
TECHNICAL  
SUPPORT  
DEALER LOCATOR  
SERVICES



\*VALID FOR 1 YEAR FROM DATE OF PURCHASE

## FREE MEMBERSHIP to Forest River Owners' Group

[www.forestriverfrog.com](http://www.forestriverfrog.com)



**Learn More**  
Scan this barcode using  
a QR Reader on your  
smart phone to learn  
more about Forest River.



A Berkshire Hathaway company.

### Specification Definitions

**GVWR (Gross Vehicle Weight Rating)** - is the maximum permissible weight of the unit when fully loaded. It includes all weights, inclusive of all fluids, cargo, optional equipment and accessories. For safety and product performance do NOT exceed the GVWR.

**GAWR (Gross Axle Weight Rating)** - is the maximum permissible weight, including cargo, fluids, optional equipment and accessories that can be safely supported by a combination of all axles.

**UVW (Unloaded Vehicle Weight)\*** - is the typical weight of the unit as manufactured at the factory. It includes all weight at the unit's axle(s) and tongue or pin and LP Gas. The UVW does not include cargo, fresh potable water, additional optional equipment or dealer installed accessories.

\*Estimated average based on standard build optional equipment.

**CCC (Cargo Carrying Capacity)\*\*** - is the amount of weight available for fresh potable water, cargo, additional optional equipment and accessories. CCC is equal to GVWR minus UVW. Available CCC should accommodate fresh potable water (8.3 lbs per gallon). Before filling the fresh water tank, empty the black and gray tanks to provide for more cargo capacity.

\*\* Estimated average based on standard build optional equipment

Each Forest River RV is weighed at the manufacturing facility prior to shipping. A label identifying the unloaded vehicle weight of the actual unit and the cargo carrying capacity is applied to every Forest River RV prior to leaving our facilities.

The load capacity of your unit is designated by weight, not by volume, so you cannot necessarily use all available space when loading your unit.

All information contained in this brochure is believed to be accurate at the time of publication. However, during the model year, it may be necessary to make revisions and Forest River, Inc., reserves the right to make all such changes without notice, including prices, colors, materials, equipment and specifications as well as the addition of new models and the discontinuance of models shown in this brochure. Therefore, please consult with your Forest River dealer and confirm the existence of any materials, design or specifications that are material to your purchase decision. Litho. U.S.A. FOR 1609 P/W: 2019.01.22

### MEET YOUR SALEM DEALER

### CUSTOMER SATISFACTION



[www.ForestRiverBuyLocal.com](http://www.ForestRiverBuyLocal.com)



### PRE-DELIVERY INSPECTION FACILITY

20,000 square feet of quality assurance. The bare essentials for a premium product. This state-of-the-art facility gives immediate daily feedback to production for quality assurance in every unit built.