

VIBE



FOREST
RIVER



28RL



34BH



26RK



EXTERIOR STANDARDS

- Hyper Lyte Construction
- Amazingly Light!!
- Gel Coat Fiberglass w/ Upgraded Graphics Package
- Laminated "Aluma Frame" Sidewalls/ Rearwall/Slideboxes
- 2" Laminated Floor
- 15,000 BTU Ducted A/C IPO 13.5K
- High efficiency A/C Cooling System (Larger Duct Work)
- Cable & Satellite Prep
- Digital TV Antenna w/ Booster
- Extra Large, Aluminum Framed, Pass-thru Storage
- One Touch Electric Awning
- LED Lighted Exterior Speakers (2)
- XL Grab Handle
- Radial Tires Filled w/ Nitrogen
- Heated and Enclosed Underbelly
- Power Stabilizer Jacks
- 2-20 lb. LP Bottles
- 30" Friction Hinge Entry Door
- Outside Kitchen on Select Models
- Aluminum Wheels
- Spare Tire
- Outside shower
- Slam Latch Baggage Doors

INTERIOR STANDARDS

- Powder Coated Scratch Resistant Cabinet Doors
- 3-Burner Cooktop w/ 17" Oven
- Large Single Bowl Stainless Steel Kitchen Sink
- Upgraded 10.7 CU. FT. Residential Refer
- On Demand Tankless Water Heater
- Dometic Pedal Flush Toilet
- Deluxe Wood Booth Table Top
- 80" Interior Height
- Hard Doors to Bedrooms for Privacy (Not Curtains)
- Decorative Kitchen Backsplash
- Large Trash Can in Designated Out-of-the-Way Area
- Full Extension Ball Bearing Drawer Guides
- Pot & Pan Storage Under Dinette Seats
- Tri-fold Sofa (Select Models)
- Skylight Over Kitchen
- Skylight Over Tub/Shower
- Theatre Seating (Select Models)
- No Carpet in Slideout and Living Areas

RESERVE PACKAGE

- Modern Black Chef's Appliance Package
- 50" Entertainment TV's (most models) with Built-In Soundbar (2 zones, FM radio, Bluetooth)
- Stainless Steel Roll-Up Sink Cover
- Roman Shade Window Treatments
- Black Tank Flush
- 200w Roof Mounted Solar Panel w/ Battery & Box
- Upgraded Spring Faucet
- Diamond Guard Front Radius
- Mor/ryde Fold-Down Solid Step
- LED Awning Light
- Recessed Stove w/ Glass Cover
- New 3/4 Front Fiberglass Cap w/ LED Light
- Teddy Bear Series Bunk Mats in Bunkhouse Models
- Solid Surface Kitchen Countertops
- Heated Tank Pads

OPTIONS

- Free Standing Table w/ 4 Chairs IPO Booth Dinette
- 50 Amp Service w/ Wire & Brace for 2nd A/C
- 2nd 13.5K A/C in Bedroom (Requires 50 Amp)

SCAN HERE
FOR MORE INFO



Remote. Control.

You take the road less traveled.
You go the extra mile.
And you always cross that bridge when you come to it.

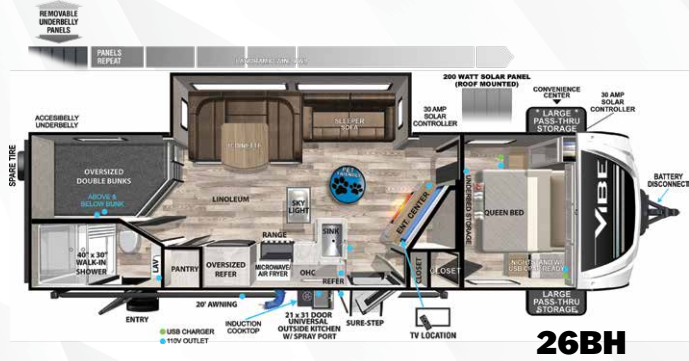
Adventure is calling, and Vibe is your ticket to explore. Our units ship with battery, 30 AMP solar controller, and 200W solar panel already installed—so you always have the power you need to go off-grid and use your 12-volt system.

With a range of bunkhouses and couple's coaches, the Vibe lineup is perfectly positioned to exceed your expectations—without sacrificing performance or reliability.

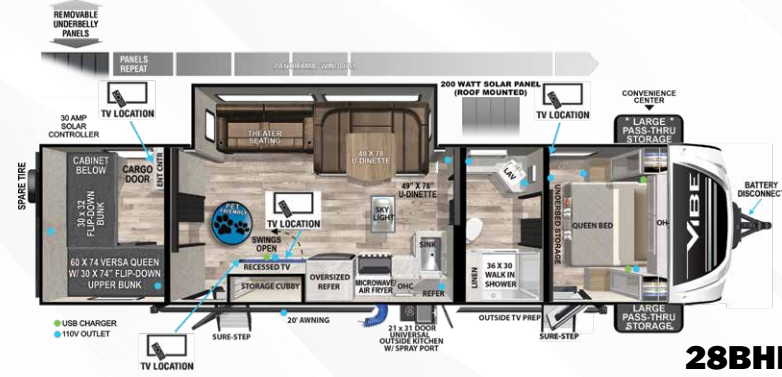
Avoid the cliches. See why Vibe is right for you.



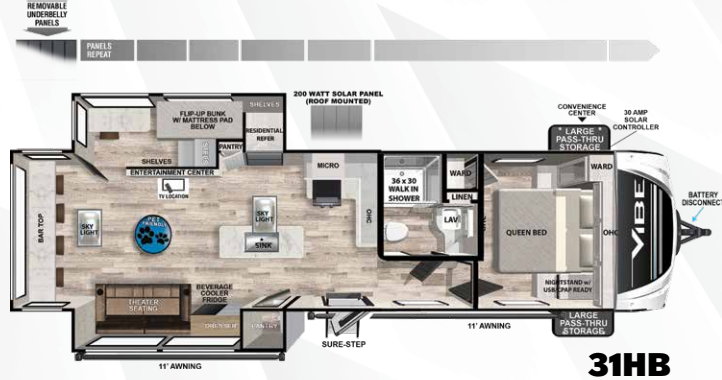
Bunkhouse Floorplans



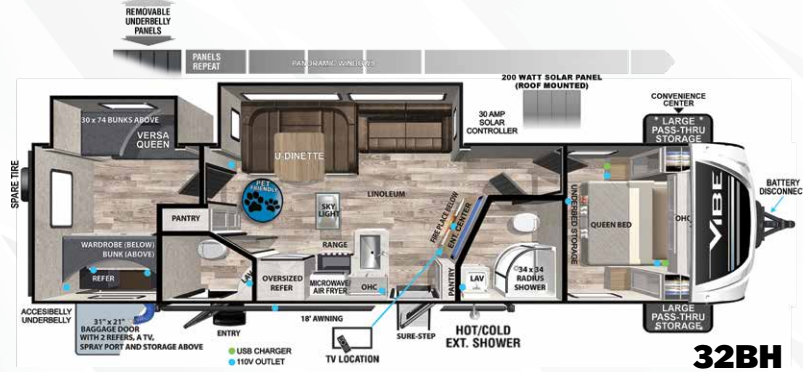
26BH	UVW	HITCH	CCC	LENGTH	HEIGHT	CAPACITY (GAL)
	6,348	835	1,487	33' 10"	11' 2"	40 90 30



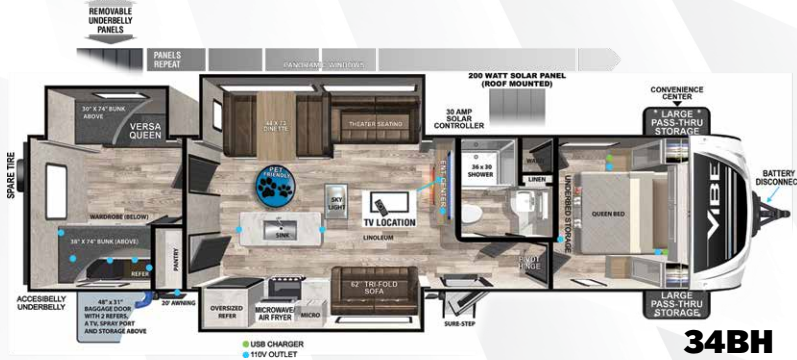
28BHE	UVW	HITCH	CCC	LENGTH	HEIGHT	CAPACITY (GAL)
	7,298	910	2,412	38' 0"	11' 2"	40 60 30



31HB	UVW	HITCH	CCC	LENGTH	HEIGHT	CAPACITY (GAL)
	8,288	1,115	1,627	36' 11"	11' 2"	39 70 30



32BH	UVW	HITCH	CCC	LENGTH	HEIGHT	CAPACITY (GAL)
	7,836	1,074	2,038	38' 3"	11' 2"	40 60 60



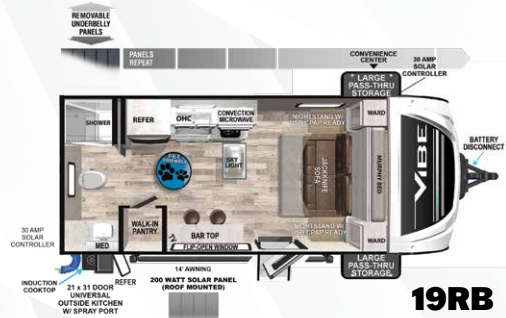
34BH	UVW	HITCH	CCC	LENGTH	HEIGHT	CAPACITY (GAL)
	8,164	972	1,608	39' 5"	11' 2"	40 60 30



Travel almost anywhere — in comfort and style

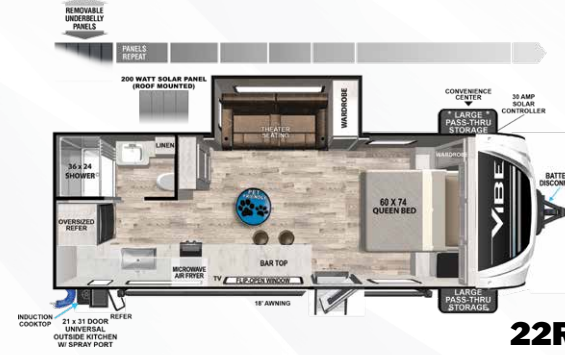


Couples' Coaches



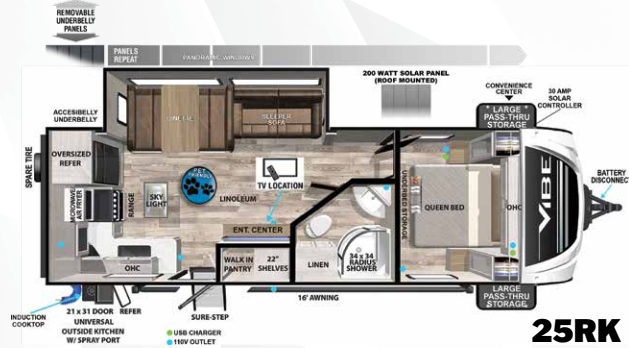
19RB

19RB	UVW	HITCH	CCC	LENGTH	HEIGHT	CAPACITY (GAL)
	4,873	680	2,807	23' 9"	11' 2"	39 62 30



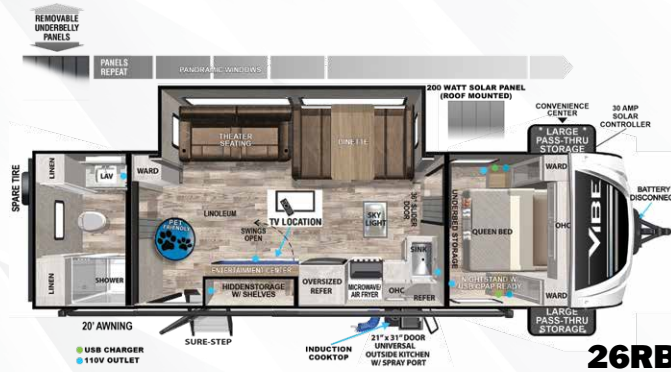
22RK

22RK	UVW	HITCH	CCC	LENGTH	HEIGHT	CAPACITY (GAL)
	5,898	780	1,882	27' 11"	11' 2"	39 62 30



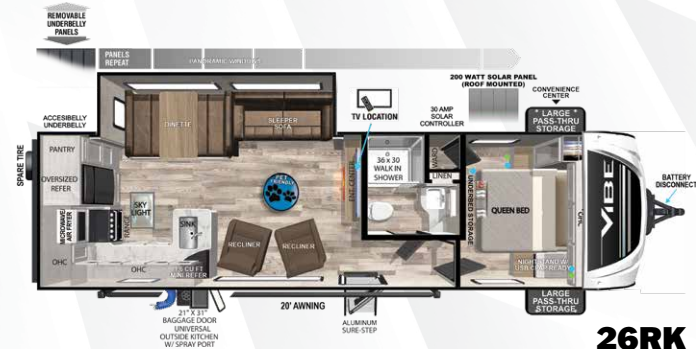
25RK

25RK	UVW	HITCH	CCC	LENGTH	HEIGHT	CAPACITY (GAL)
	5,888	805	1,712	29' 2"	11' 2"	40 60 30



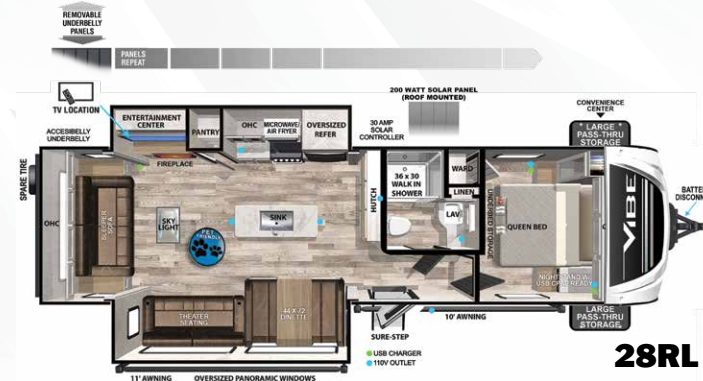
26RB

26RB	UVW	HITCH	CCC	LENGTH	HEIGHT	CAPACITY (GAL)
	6,353	700	1,347	32' 0"	11' 2"	40 60 30



26RK

26RK	UVW	HITCH	CCC	LENGTH	HEIGHT	CAPACITY (GAL)
	6,664	941	1,277	33' 6"	11' 2"	40 60 30



28RL

28RL	UVW	HITCH	CCC	LENGTH	HEIGHT	CAPACITY (GAL)
	7,096	821	2,525	34' 5"	11' 2"	40 60 30



Get out there.



PRE-DELIVERY INSPECTION FACILITY
20,000 square feet of quality assurance. The bare essentials for a premium product. This state-of-the-art facility gives immediate daily feedback to production for quality assurance in every unit built.

CUSTOMER SATISFACTION



www.ForestRiverBuyLocal.com



**24/7 EMERGENCY
ROADSIDE ASSISTANCE
WITH VEHICLE PURCHASE***

- | | |
|-----------------|-------------------|
| TOWING | WINCH-OUT |
| JUMP-STARTS | MOBILE MECHANIC |
| TIRE CHANGES | TECHNICAL SUPPORT |
| FLUID DELIVERY | DEALER LOCATOR |
| LOCKOUT SERVICE | SERVICES |



*VALID FOR 1 YEAR FROM DATE OF PURCHASE

Download our Forest River mobile app or visit our dynamic online manual to enhance your ownership experience. These interactive options provide incredible ease and insight into use, maintenance and enjoyment of your Forest River product.

Ranging from "How-To" videos, pictures and illustrations of various components, systems and features, to fully searchable content and downloadable PDFs for individual component owner's manuals, answers are always just a click away. View the online manual at www.forestriverinc.com/OnlineManual or download our FREE app from the App Store or Google Play!



**Starting January 1, 2024

FREE MEMBERSHIP
to Forest River Owners' Group

www.forestriverfrog.com



Learn More
Scan this barcode using a QR Reader on your smart phone to learn more about Forest River.



A Berkshire Hathaway company.

GVWR (Gross Vehicle Weight Rating) - is the maximum permissible weight of the unit when fully loaded. It includes all weights, inclusive of all fluids, cargo, optional equipment and accessories. For safety and product performance do NOT exceed the GVWR.

GAWR (Gross Axle Weight Rating) - is the maximum permissible weight, including cargo, fluids, optional equipment and accessories that can be safely supported by a combination of all axles.

UVW (Unloaded Vehicle Weight) - is the typical weight of the unit as manufactured at the factory. It includes all weight at the unit's axle(s) and tongue or pin and LP Gas. The UVW does not include cargo, fresh potable water, additional optional equipment or dealer installed accessories.*

*CCC (Cargo Carrying Capacity)** - is the amount of weight available for fresh potable water, cargo, additional optional equipment and accessories. CCC is equal to GVWR minus UVW. Available CCC should accommodate fresh potable water (8.3 lbs per gallon). Before filling the fresh water tank, empty black and gray tanks for more cargo capacity.*

**Estimated Average based on standard build optional equipment. ** Estimated average based on standard build optional equipment. Values estimated at time of printing.*

Each Forest River RV is weighed at the manufacturing facility prior to shipping. A label identifying the unloaded vehicle weight of the actual unit and the cargo carrying capacity is applied to every Forest River RV prior to leaving our facilities. The load capacity of your unit is designated by weight, not by volume, so you cannot necessarily use all available space when loading your unit.

All information contained in this brochure is believed to be accurate at the time of publication. However, during the model year, it may be necessary to make revisions and Forest River, Inc., reserves the right to make all such changes without notice, including prices, colors, materials, equipment and specifications as well as the addition of new models and the discontinuance of models shown in this brochure. Therefore, please consult with your Forest River, Inc., dealer and confirm the existence of any materials, design or specifications that are material to your purchase decision. ©2023 Vibe, a division of Forest River Inc., a Berkshire Hathaway company.