

Wildwood
Heritage Glen
LITE

Wildwood
Heritage Glen
LITE



PROMOTING FUN AND VALUE FROM OUR FAMILY TO YOURS.





REDEFINING VALUE
Heritage Glen 282RK

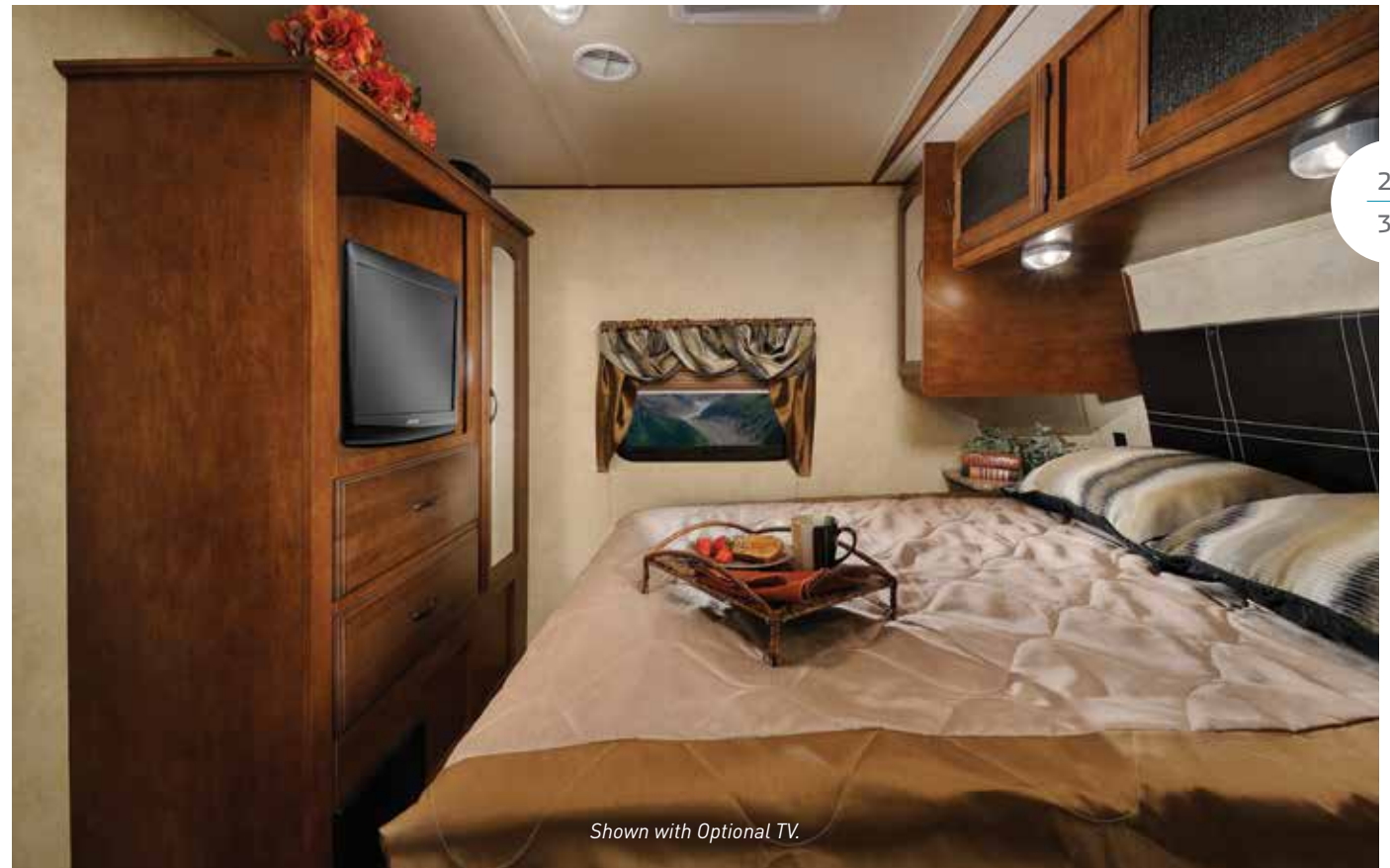
282RK

SHOWN IN COGNAC LEATHER



EXCELLENT CRAFTSMANSHIP

Our skilled craftsmen have years of experience building beautifully finished cabinetry.



Shown with Optional TV.



PROMOTING FUNCTIONALITY

Heritage Glen 312QBUD



312QBUD

SHOWN IN SOAPSTONE



Shown with Optional TV and Jiffy Sofa.



HERITAGE GLEN DELUXE OUTSIDE KITCHEN

Wildwood's deep slide outs create a well-designed exterior camp kitchen, providing everything the camp chef needs to prepare your campsite favorites! From our bumper mounted and swing arm grill to the large number of doors and drawers, we are redefining functionality.

Low counter top heights provide a functional workspace while cleaning up and preparing, as well as an easy reach for children to set drinks and snacks! All of our outside kitchens are equipped with a mini fridge to avoid traffic in and out of your camper.

Heritage Glen also offers the exterior camp kitchen in non-bunk floor plans! The 282RK, 302FK and 276RK provide the option of an outside kitchen without the bunks.

The outside kitchen (shown above) is available in the 300BH, 312QBUD, 356QBQ, and 366BH.

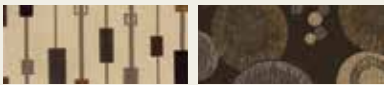


MAXIMIZING LUXURY

Heritage Glen 327RES

327RES

SHOWN IN COGNAC LEATHER



Radius Edge LG® Solid Surface
Kitchen Countertops



High Rise Faucet w/ Pull-Out
Sprayer and Undermount Sink



Stainless Steel Kitchen Package

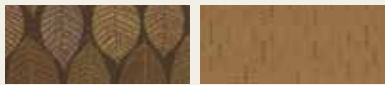




LEADING INNOVATION
Heritage Glen 356QBQ

356QBQ

SHOWN IN CHOCOLATE



6'5" Full Walk-In 5th Wheel Slide-Outs (N/A Bed Slides)



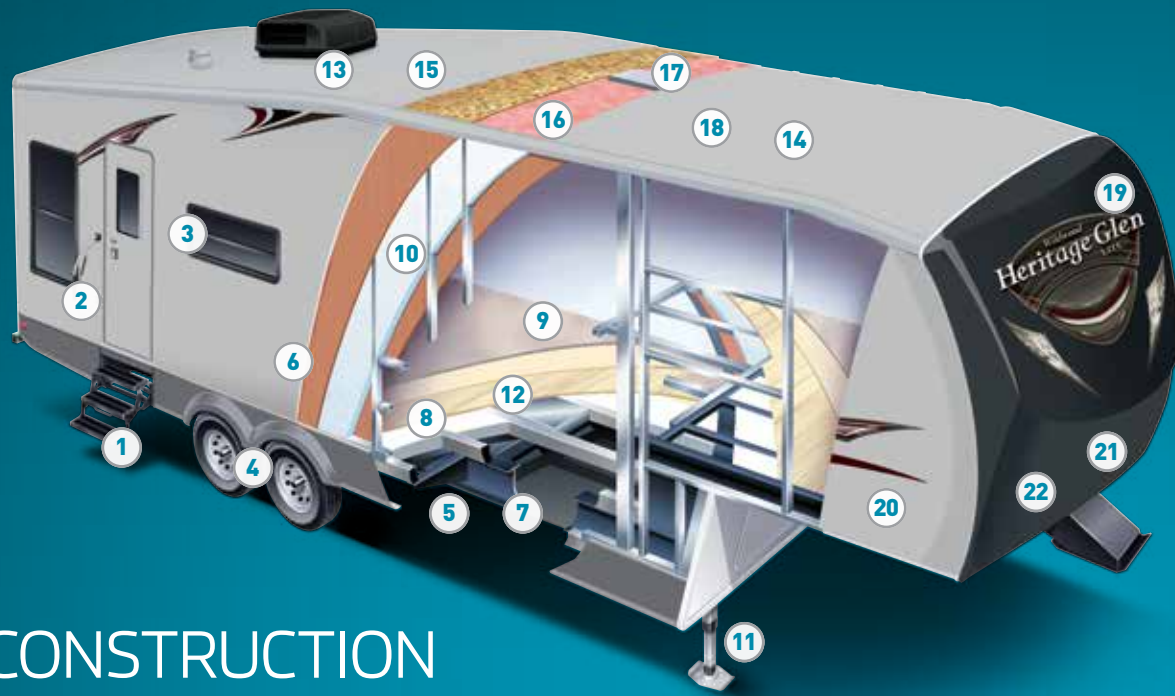
Extra large pot and pan drawer at the dinette base



Deluxe wood dinette table top

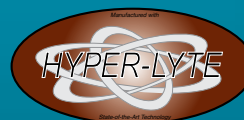


Shown with Optional TV and Jiffy Sofa.



CONSTRUCTION BUILT TO LAST.

- 1** Triple entry steps
- 2** Folding entry assist handle
- 3** Tinted safety glass windows
- 4** Ultra lube axles
- 5** I-Beam and Powder-coated frame with cambered chassis
- 6** Laminated vacuum-bonded aluminum framed sidewalls
- 7** Heated and enclosed underbelly
- 8** Laminated floor
- 9** Residential stain resistant carpet
- 10** High density block foam insulation
- 11** Power front jacks (fifth wheels only)
- 12** Under-floor ducted heat
- 13** Ducted 13.5 K BTU high output air conditioning
- 14** One piece seamless roof (12 yr. warranty)
- 15** 3/8" roof decking (full walk-on roof)
- 16** R-14 ceiling insulation ceiling
- 17** Insulated duct for central air
- 18** 5" crowned roof rafters
- 19** Painted & gel-coated fiberglass front cap
- 20** Gel-coat fiberglass exterior
- 21** Hitch light
- 22** Sharp turn radius front cap



- A:** Docking station with quick winterization feature (Fifth Wheels only)
- B:** Wide track suspension (travel trailers) with aluminum rims
- C:** Black Tank Flush
- D:** Heated and enclosed underbelly
- E:** Huge finished and insulated fifth wheel pass-thru storage
- F:** 6 gal. G/E quick recovery DSI water heater
- G:** Painted & gel-coated fiberglass front cap w/ LED light strips (Fifth wheels)

WILDWOOD HERITAGE GLEN STANDARDS & OPTIONS

HYPER LYTE CONSTRUCTION

- EZ-Lube Axles w/ 15" Radial Tires (16" on select models)
- Painted Fiberglass Front Cap
- Aerodynamic 5th Wheel Front Cap w/ LED Light Strips
- Wide Track Suspension (Travel Trailers)
- 3 Sided Aluminum-Framed Vacuum-Bonded Construction
- Gel Coated Fiberglass Exterior
- Laminated Sidewalls
- Laminated Floor w/ In-Floor Heat
- 6'5" Full Walk-In 5th Wheel Slide-Outs (N/A Bed Slides)
- One Level, Full Stand-Up Height 5th Wheel Upper Decks
- 30" Smooth Fiberglass Radius Main Entry Door (26' Secondary)
- Swing Arm Entry Assist Handle
- Extra Large Full Pass-Thru Storage (per floorplan)
- One Touch Electric Awning w/ Adjustable Legs (1 year warranty)
- Upgraded ABS Fender Skirts
- Grab Handle at 5th Wheel Interior Steps
- Powder Coated I-Beam Frame
- Cambered Chassis
- Water heater By-Pass
- Fifth Wheel Docking Station
- Power Flush Floor Slide-Out Systems
- 16 Gal. per hour G/E Quick Recovery DSI Water Heater (2 year warranty)
- Stabilizer Jacks

- One piece seamless roof (12 yr. warranty)
- Power Front Jacks (5th Wheels Only)
- Tinted Safety Glass Windows

KITCHEN

- LG® Solid Surface Countertops
- Dometic® Raise Panel Double Door Refrigerator (2 year warranty)
- Residential, Under Mount Sink
- Microwave w/ Carousel (1 year warranty)
- High Rise, Pull-Out Sprayer Faucet
- Vented Range Hood w/ Light
- IVC Plank Wood Linoleum (Made in USA)
- Solid Wood Drawer Fronts w/ Full Extension Ball Bearing Guides
- Solid Wood Raised Upper Panel Cabinet Doors
- Large Overhead Cabinets
- Wall-Mounted Systems Monitor Panel
- Oil Rubbed Bronze Hardware

LIVING ROOM

- 13,500 BTU Ducted Roof Air Conditioner w/ Quick Cool (2 year warranty)
- Residential Stain Resistant Carpet
- Swivel Rocker(s) (per floorplan)
- Theatre Seating w/ Built-In Recliners (per floorplan)
- Oversized Dinette w/ Large Pot and Pan Drawers (per floorplan)
- Deluxe Wood Dinette Tabletop

- Solid Wood Drawer Fronts
- Extra Large 77" U-Dinette (per floorplan)
- Large Dinette Picture Window
- 360° Omni Directional Digital TV Antenna
- Cable TV and Satellite Prep
- Extra Large Overhead Cabinets w/ Glass Inserts
- Decorative Wall Light
- 30 or 35K BTU Suburban Forced Air DSI Furnace (2 year warranty) w/ Digital Thermostat
- Under Floor Heat Ducting
- Night Shades
- Air Hide-A-Bed Sofa w/ Drawer
- 28" LCD TV w/ DVD
- 32" LCD TV w/ DVD (5th wheel, 272RLIS, and 299RE trailer floorplans)

BEDROOM

- King Bed in All Bedroom Slide 5th Wheels
- Strut Lifted Storage Area Under Bed
- Oversized Bunks (per floorplan)
- Solid Bedroom Privacy Doors
- Mirrored Wardrobe w/ large Drawers (most floorplans)
- Swing Arm TV Bracket (5th wheel bedrooms)
- Tall, 6 Drawer Dressers (most 5th wheels)

BATHROOM

- 12-Volt Power Bath Roof Exhaust Vent
- Wooden Medicine Cabinet w/ Mirrored Door
- Dometic® Foot Flush Toilet
- Tooth Brush Holder and Towel Ring
- Vinyl Tub Surround

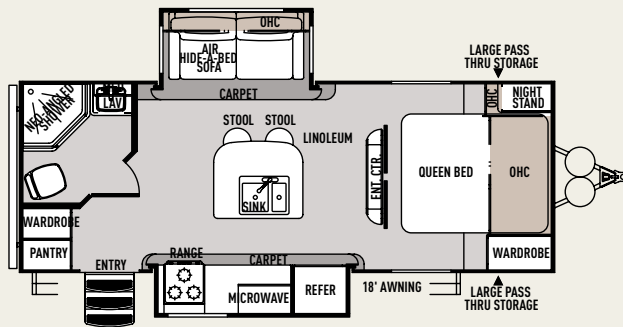
SECURITY AND SAFETY

- LP Leak Detector
- Smoke Detector
- Carbon Monoxide Detector
- Fire Extinguisher
- LED Hitch Light
- Welded Heavy Duty Safety Chains (Travel Trailers)
- Electric Brakes (all wheels)
- GFI Receptacles
- ANSI 119.2
- Certified to Meet National Highway Traffic Safety Administration Specifications

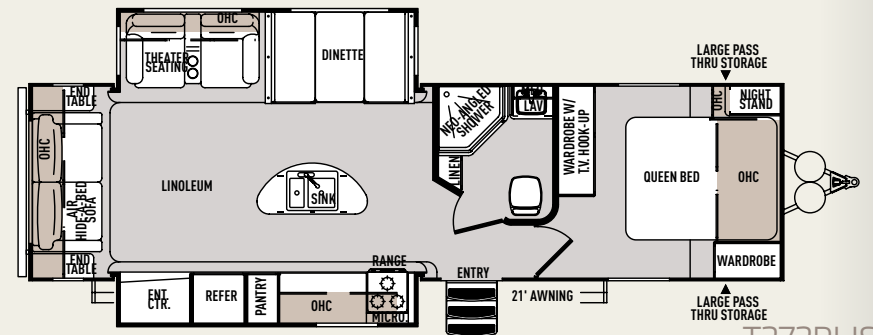
HERITAGE GLEN OPTIONS

- Free-Standing Dinette w/ 4 Chairs
- Living Room Ceiling Paddle Fan (5th wheels)
- Roof Ladder
- 15,000 BTU Ducted A/C w/ Quick Cool
- Outside Shower (Travel Trailers)
- 50 Amp Service
- Washer/Dryer Prep (5th Wheels)

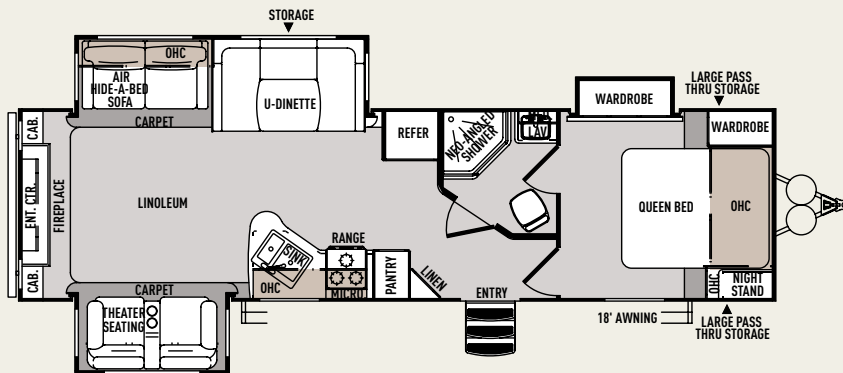
Contact your Heritage Glen dealer for a complete list of options



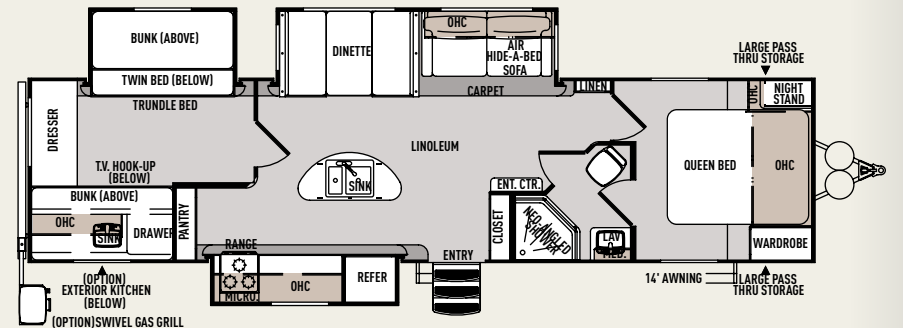
T2321S



T272RLIS



T299RE



T300BH

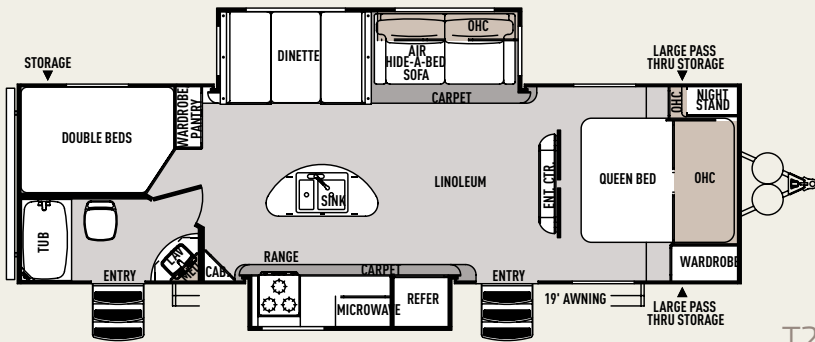
WILDWOOD HERITAGE GLEN TRAVEL TRAILERS

	T2321S	T272RLIS	T282BHIS	T282RK	T299RE	T300BH	T302FK	T312QBUD
HITCH WEIGHT (LBS.)	790	845	780	700	730	880	875	855
AXLE WEIGHT (LBS.)	5280	6390	6385	6040	6650	7500	6225	5985
DRY SHIP WEIGHT (LBS.)	5720	6975	6805	6620	7380	8250	7175	7150
CARGO CARRYING CAPACITY (LBS.)	3461	2351	2356	1901	2091	2601	2516	2601
EXTERIOR LENGTH	26' 0"	34' 4"	33' 0"	35' 0"	35' 1"	37' 5"	35' 5"	35' 10"
EXTERIOR HEIGHT	11'	11'	11'	11'	11'	11' 2"	11'	11'
FRESH WATER CAPACITY (GAL.) *	44	44	44	44	44	44	44	44
BLACK WATER CAPACITY (GAL.)	32	30	32	32	30	32	32	32
GREY WATER CAPACITY (GAL.)	50	48	50	64	33	64	64	62
TIRE SIZE (IN.)	15"	15"	15"	15"	15"	15"	15"	15"
AWNING SIZE (FT.)	18'	21'	19'	16'	18'	14'	19'	20'

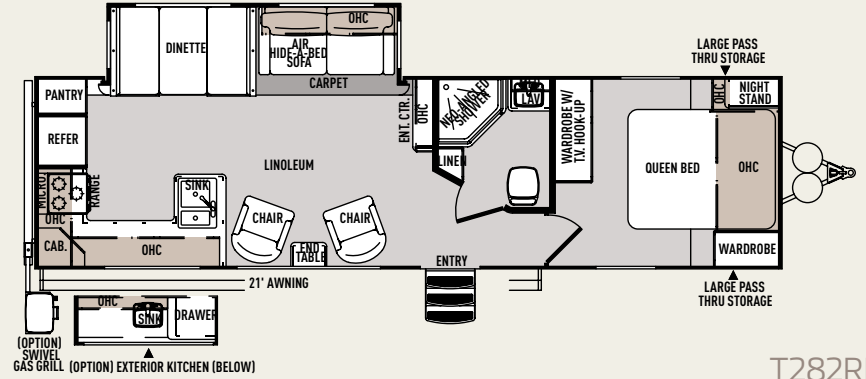
* Includes hot water heater

FLOORPLAN KEY

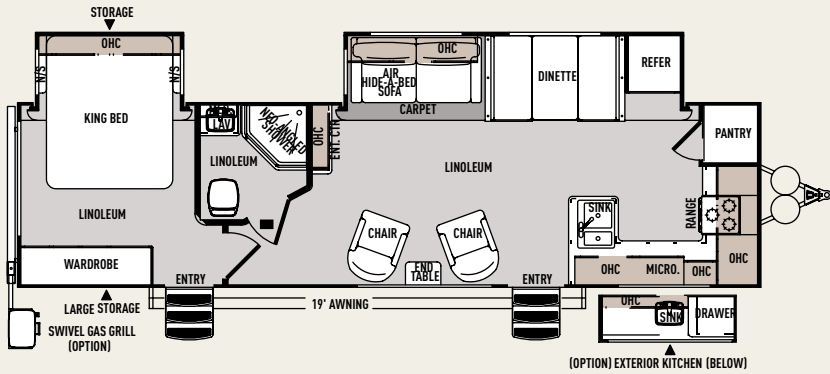
OHC	OVERHEAD CABINET
WARD	WARDROBE
MICRO	MICROWAVE
LAV	BATHROOM SINK



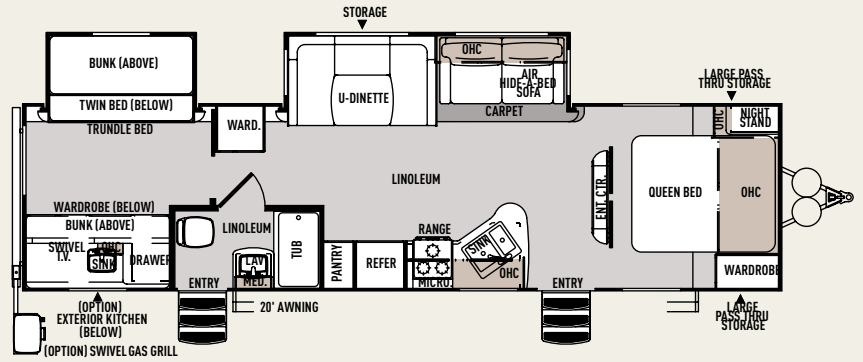
T282BHIS



T282RK

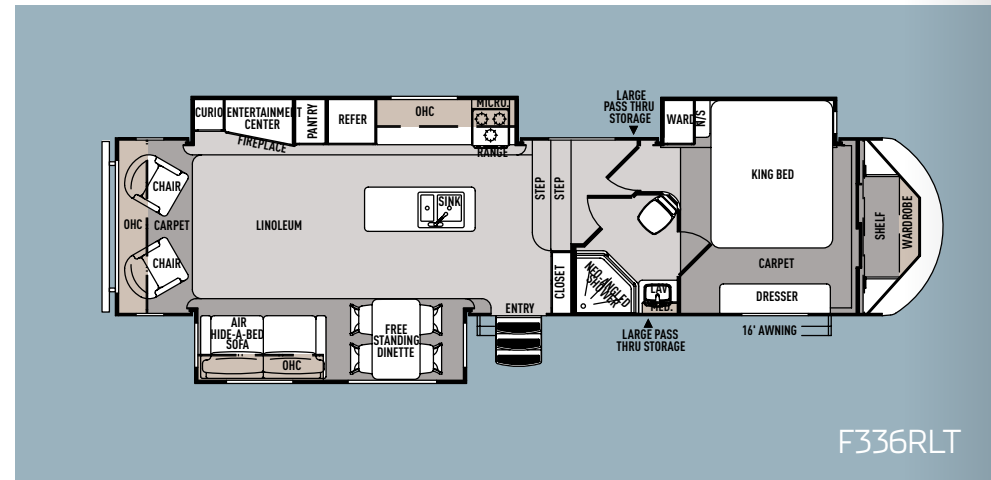
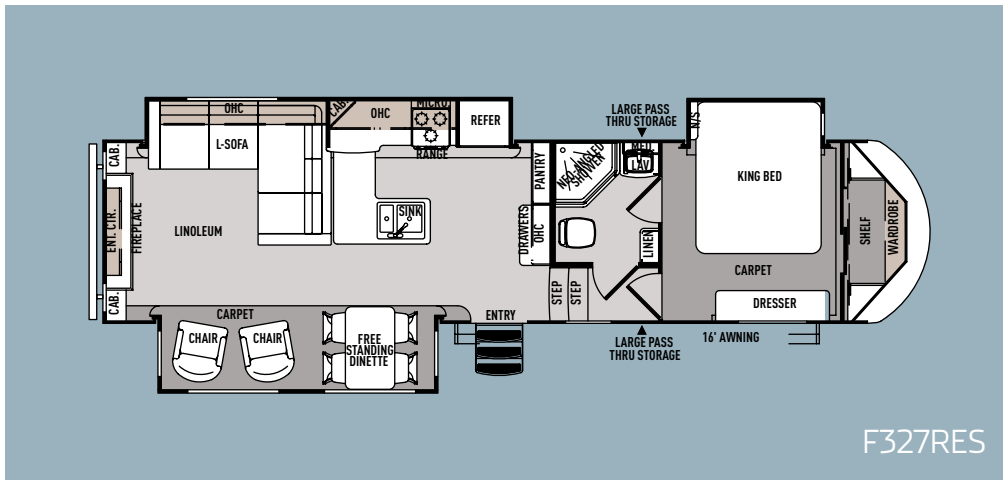
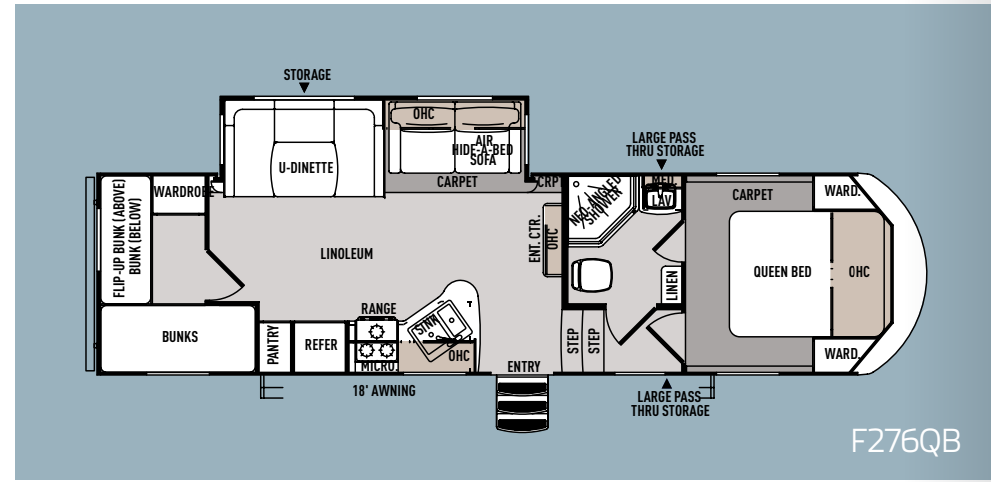
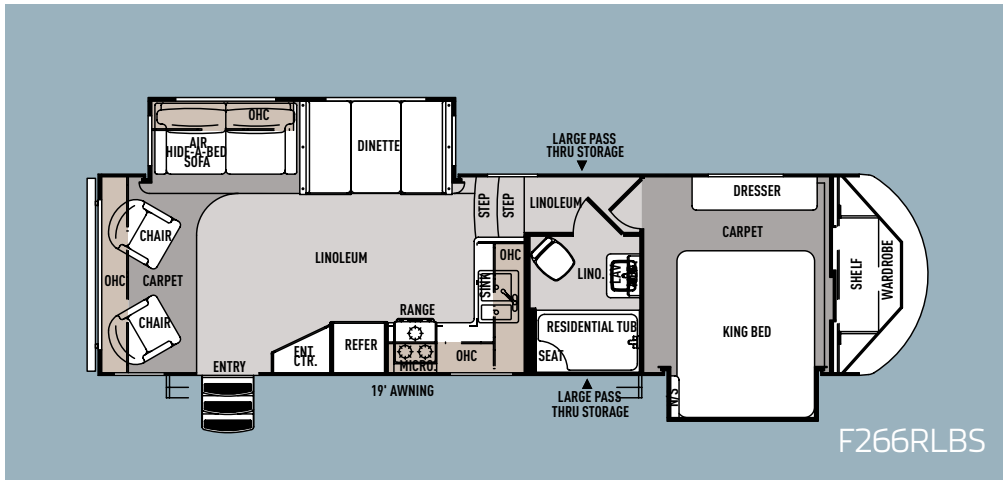


T302FK



T312QBUD





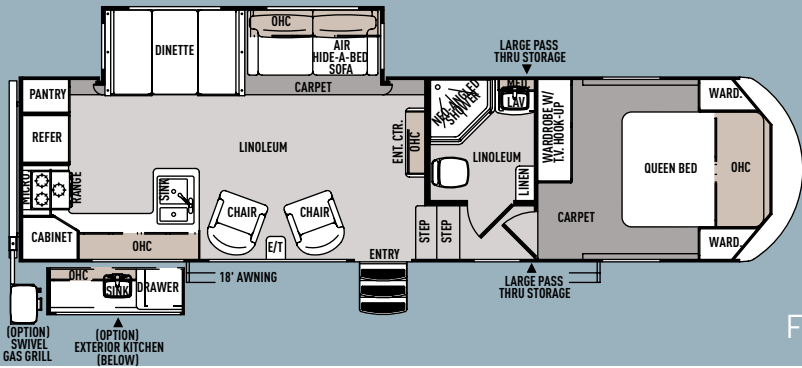
WILDWOOD HERITAGE GLEN FIFTH WHEELS

	F266RLBS	F276QB	F276RK	F286RLT	F327RES	F336RLT	F356QBQ	F366BH
HITCH WEIGHT (LBS.)	1559	1585	1325	1625	1795	1750	1790	1810
AXLE WEIGHT (LBS.)	6646	6410	6810	6815	7690	7705	9400	9150
DRY SHIP WEIGHT (LBS.)	8205	7995	7985	8440	9380	9455	10960	11090
CARGO CARRYING CAPACITY (LBS.)	3455	3691	3291	3286	2651	2636	2541	2791
EXTERIOR LENGTH	33' 11"	33' 2"	34' 3"	32' 7"	36' 5"	37' 6"	42' 3"	42' 1"
EXTERIOR HEIGHT	12' 10"	12' 8"	12' 8"	12' 10"	13'	13'	13' 2"	13' 2"
FRESH WATER CAPACITY (GAL.)	44	44	44	44	44	44	44	44
BLACK WATER CAPACITY (GAL.)	30	30	30	30	30	30	60	60
GREY WATER CAPACITY (GAL.) *	62	62	62	60	62	62	92	92
TIRE SIZE (IN.)	15"	15"	15"	15"	16"	16"	16"	16"
AWNING SIZE (FT.)	19'	18'	18'	16'	16'	16'	21'	18'

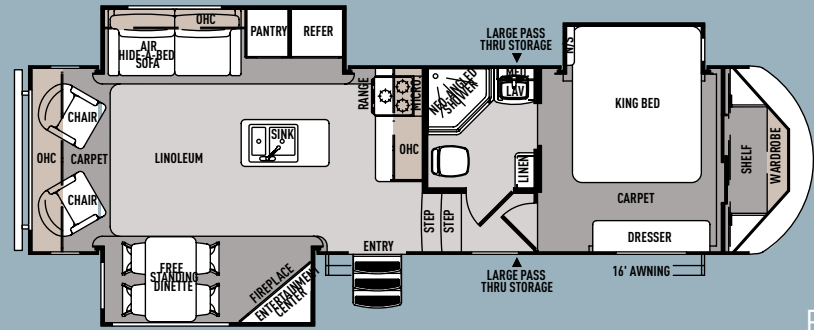
* Includes hot water heater

FLOORPLAN KEY

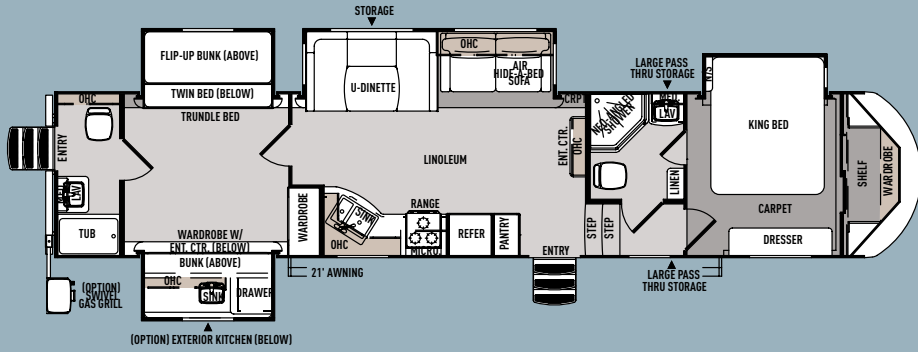
OHC	OVERHEAD CABINET
WARD	WARDROBE
MICRO	MICROWAVE
LAV	BATHROOM SINK



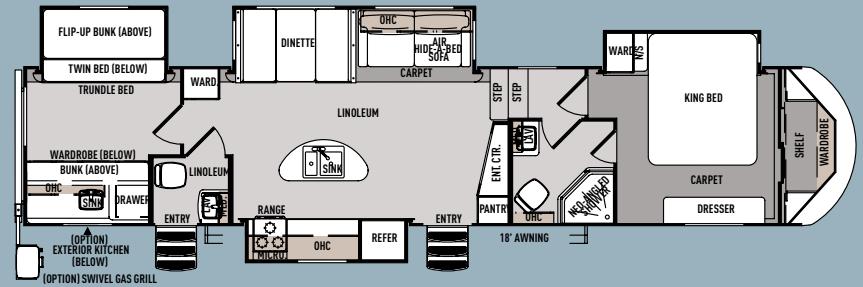
F276RK



F286RLT



F356QBQ



F366BH

NEW FLOORPLAN
COMING SOON!



THE WILDWOOD LINE-UP



WILDWOOD X-LITE



WILDWOOD



WILDWOOD DLX | WILDWOOD LODGE



WILDWOOD HERITAGE GLEN

YOUR WILDWOOD DEALER



Learn More
Scan this barcode using a QR Reader on your smart phone to learn more about Forest River.



A Berkshire Hathaway company.

Forest River, Inc. 55470 C.R. 1 Elkhart, IN 46515 | (574) 533-5934
www.forestriverinc.com/wildwood | www.forestriveraccessories.com

FREE MEMBERSHIP
to Forest River Owners' Group



www.forestriverfrog.com

All illustrations and specifications contained in this literature are based on the latest product information at time of publication. Forest River reserves the right to make changes in prices, colors, materials, equipment and specifications at anytime without notice and assumes no responsibility for any error in this literature. All units are shipped F.O.B. Goshen, Indiana. CONSULT YOUR LOCAL DEALER FOR WARRANTY INFORMATION. LITHO: U.S.A. FOR 1134 W. 2014.05.05



PRE-DELIVERY INSPECTION FACILITY

20,000 square feet of quality assurance. The bare essentials for a premium product. This state-of-the-art facility gives immediate daily feedback to production for quality assurance in every unit built.



Forest River, Inc. encourages our customers to purchase their Forest River products from a local dealership whenever possible for the following reasons:

- 1) Forest River, Inc. dealers are independently owned and operated businesses so priority service and scheduling is at their discretion and is often provided to customers that purchased their unit at that dealership.
- 2) Purchasing locally allows customers to establish meaningful relationships with a dealer, enhancing the RV experience through assistance with product questions, user tips or RV regulations for your state or country, and much more!
- 3) Canadian customers must meet requirements to bring an RV purchased out of the country to their home. These requirements may involve additional inspections and certifications, taxes and fees. Your local Canadian Dealer is a professional at meeting these requirements.
- 4) Scheduling timely warranty repairs and adjustments through a local dealership provides far greater flexibility and convenience to you, the customer!

It is the goal of Forest River, Inc. that all of our RV owners fully enjoy the RV experience and that customer satisfaction meets or exceeds their expectations!

24/7 EMERGENCY ROADSIDE ASSISTANCE

For a worry-free ownership experience

Coach-Net®

RV Technical & Roadside Assistance

Forest River includes one year of Coach-Net RV Technical & Roadside Assistance with each RV purchase. Whether new to the RV lifestyle or an experienced RV enthusiast, Forest River owners have 24/7 access to technical, operational and emergency road service coverage throughout the US & Canada. Coach-Net's fast, dependable service is just a phone call away.