

# Wildwood Wildwood

by FOREST RIVER

by FOREST RIVER

## DLX

NOBODY HAS YOU COVERED LIKE WILDWOOD

# GO WILD

WILDWOOD DLX SERIES  
PERFECT FOR EXTENDED STAYS

WILDWOOD SERIES  
AFFORDABLE, TOWABLE  
FAMILY FUN



AMERICA'S BEST SELECTION OF QUALITY BUILT AND AFFORDABLE  
TRAVEL TRAILERS, FIFTH WHEELS AND EXTENDED STAY TRAILERS



Wildwood Wildwood GO WILD  
DLX DLX



# Wildwood GO WILD

by FOREST RIVER



THE WILDWOOD SERIES. GO WILD! WILDWOOD IS THE ULTIMATE CAMPING EXPERIENCE. WILDWOOD OFFERS EVERYTHING YOU DEMAND FROM YOUR TRAVEL TRAILER OR FIFTH WHEEL. THE SELECTION OF OUR FLOORPLAN OPTIONS RANGE FROM 26' TO 37' MODELS. IF YOU ARE INTERESTED IN A TRAVEL TRAILER LIKE THE 26TBSS (PICTURED BELOW) OR A LARGER 37 FOOTER FOR DESTINATION LIVING, WE HAVE THE FLOOR PLAN TO MEET YOUR NEEDS. NOBODY HAS YOU COVERED LIKE WILDWOOD!



26TBSS  
 {left} Wildwood's interior offers up to 80". Shown with optional TV.

26TBSS  
 {below left} Entertaining is easy with the fully equipped kitchen and the roomy sofa and dinette slide-out.

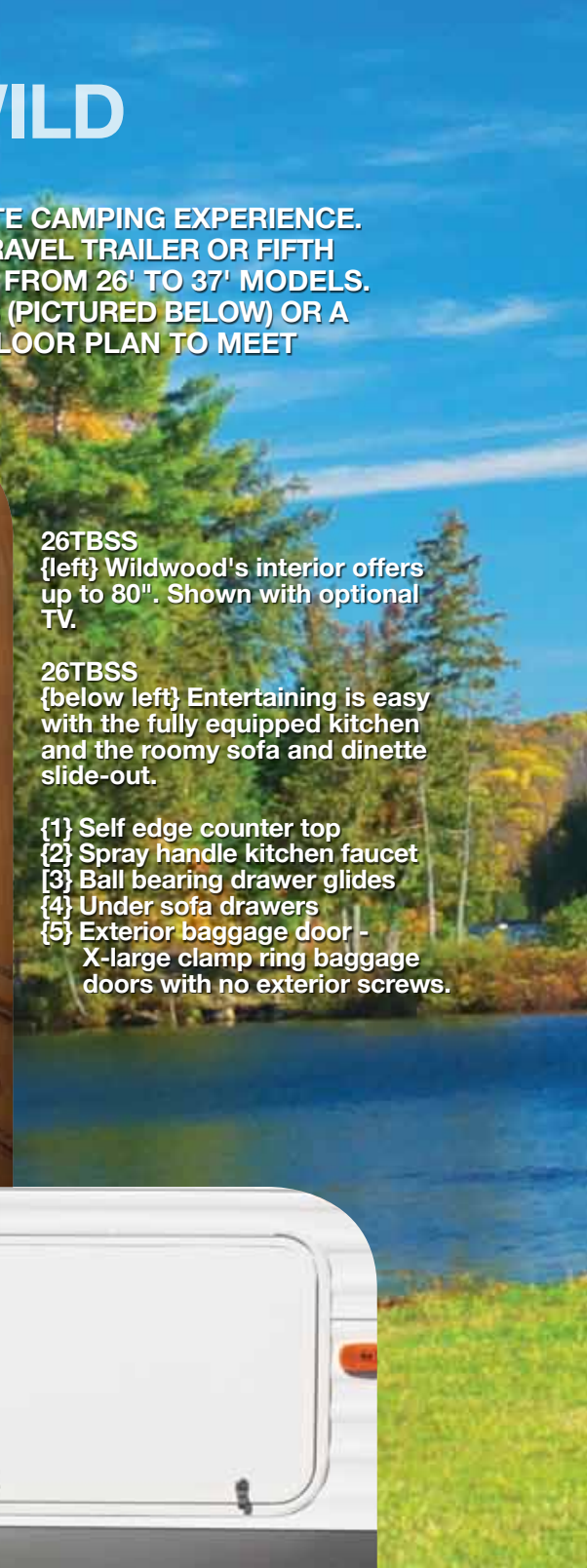
- {1} Self edge counter top
- {2} Spray handle kitchen faucet
- {3} Ball bearing drawer glides
- {4} Under sofa drawers
- {5} Exterior baggage door - X-large clamp ring baggage doors with no exterior screws.

80"  
 interior height

Stone Interior shown. Also shown with optional TV.



Wine Interior shown.







**29BHBS** Optional Onyx interior upgrade shown. Wildwood offers tremendous family functionality. The U-shape dinette featured provides a dining experience the whole family can enjoy or it can be converted into a large sleeping area. The 29BHBS bedroom (below) has all of the comforts of home and allows you to get a good nights rest.



The cooler slide system option is a great addition to your trailer. It comes with a cooler that is placed on our slider system that is located in the front baggage door. It conveniently slides in for storage and out for enjoyment. (only available on front queen bed models)





# Wildwood

by FOREST RIVER



**36FLKB Wine Interior.** Get a great night's sleep in the master bedroom suite. The king bedroom slide out in the 36FLKB provides spacious sleeping and a large enough wardrobe for an extended stay. Shown with customer supplied TV and chair.



**36FLKB** This walk through bathroom includes cabinet storage above and below the sink as well as wardrobe cabinets with four drawers on full extension ball bearing glides. Wildwood is always striving to maximize storage space in your camper. The 36FLKB excels in storage availability.

The swing arm grill is perfect for grilling out. Attached to the back of the unit, the grill arm neatly folds outward giving you a great setup for outdoor cooking. (available on both the Wildwood and Wildwood Deluxe)





## CONSTRUCTION

- {A} MAIN TRIPLE ENTRY STEPS
- {B} 2" X 3" FLOOR JOISTS 12" ON CENTER
- {C} 5/8" 5-PLY TONGUE & GROOVE PLYWOOD FLOOR DECKING
- {D} 2" WALL STUDS 16" OR LESS ON CENTER
- {E} FIBERGLASS 30" ENTRY RADIUS DOOR
- {F} .024 ALUMINUM SIDING
- {G} 5" BOWED TRUSS ROOF RAFTERS
- {H} SEAMLESS RUBBER ROOF (12 YR. WARRANTY)
- {I} R-7 FIBERGLASS INSULATION THROUGHOUT
- {J} FULL PASS THRU STORAGE - CLAMP RING BAGGAGE DOORS
- {K} CLAMP RING JALOUSIE WINDOWS
- {L} SMOOTH ROLLED SKIRTING
- {M} DUCTED HEAT
- {N} DIAMOND PLATE ROCKGUARD
- {O} 3/8" ROOF DECKING (FULL WALK-ON ROOF)
- {P} LP BOTTLE COVER W/ EASY ACCESS
- {Q} 13.5K DUCTED ROOF A/C
- {R} CARPET WITH PADDING
- {S} HITCH LIGHT
- {T} ABS FENDER SKIRTS
- {U} BEAU-FLO<sup>TM</sup> DURABLE FLOORING
- {V} SAFETY GLASS
- {W} EZ-LUBE AXLES



STONE INTERIOR



WINE INTERIOR



COFFEE INTERIOR



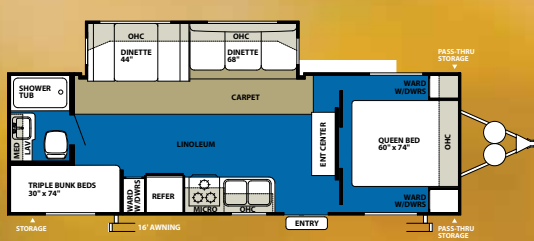
MOSS INTERIOR

**CONSTRUCTED TO LAST FOR MANY YEARS OF ENJOYMENT. LOOK INSIDE THE WILDWOOD AND SEE WHY IT IS ONE OF THE MOST DURABLE RV'S ON THE ROAD TODAY.**

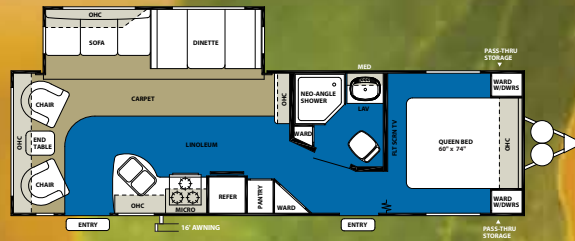
Form follows function. At Wildwood, quality is serious business and it shows. Our commitment to quality includes: {1} a one piece rubber roof with 12 year warranty and {2} heated and enclosed fresh water tank. {3} The floor in Wildwood is 5/8" tongue and groove plywood. Most of our competitors use OSB board which is not as durable as our real wood floor. {4} The queen bed on assist struts shown lifted to access storage underneath bed.



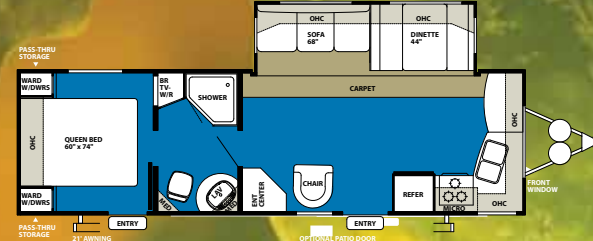




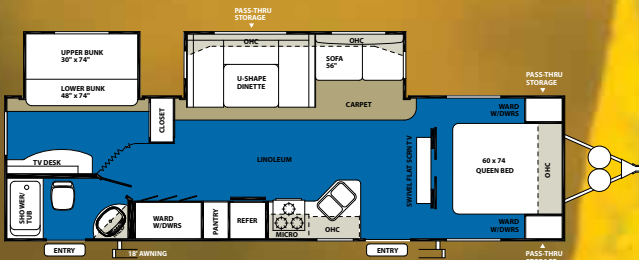
T26TBSS



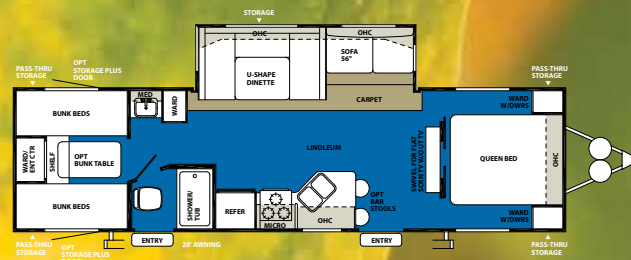
T27RLSS



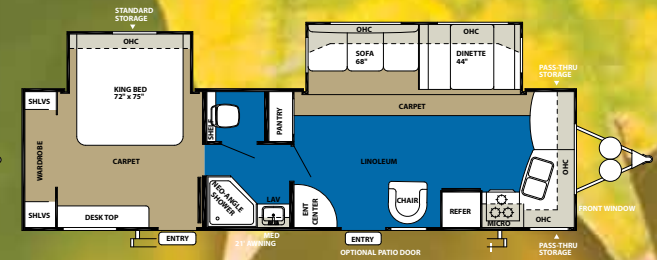
T29FKSS



T29BHBS



T29QBBS



T30FKBS

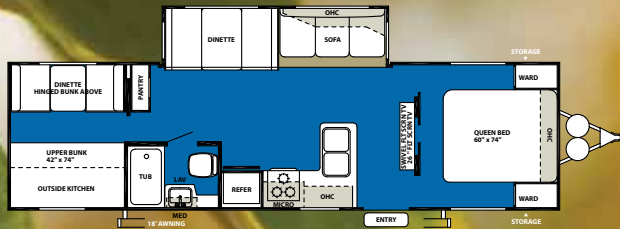
CORRECT AIR FLOW



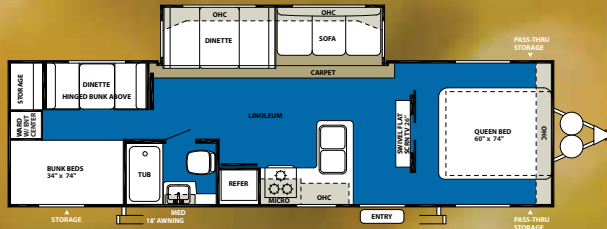
5 26TBSS Wildwood's aerodynamically correct front profile improves towability and gas mileage.

### SLIDE-OUT TRAVEL TRAILER SPECIFICATIONS

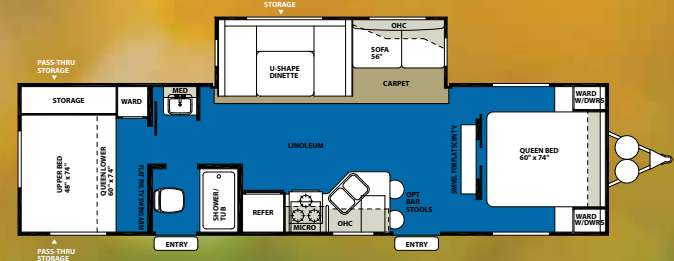
	26TBSS	27RLSS	29FKSS	29BHBS	29QBBS	30FKBS
HITCH WEIGHT lb	600	675	910	875	826	830
AXLE WEIGHT	4765	5895	5305	6820	5772	6825
DRY SHIP WEIGHT	5665	6570	6205	7695	6598	7655
GVWR	7600	7675	7900	11035	10986	10935
CCC cargo capacity	2195	1070	1655	2960	3279	3280
EXT LENGTH	28' 3"	31' 6"	30' 5"	34' 5"	35' 3"	34' 9"
EXT HEIGHT	11' 1"	11' 1"	11' 1"	11' 1"	11' 1"	11' 1"
INT HEIGHT	80"	80"	80"	80"	80"	80"
FRESH WATER CAP gal	42	42	42	35	35	42
BLACK WATER CAP gal	35	35	35	35	35	32
GREY WATER CAP gal	35	35	70	66	32	65
TIRE SIZE in	15	15"	15"	15"	15"	15"
AWNING SIZE ft	16'	16'	18'	18'	20'	21'



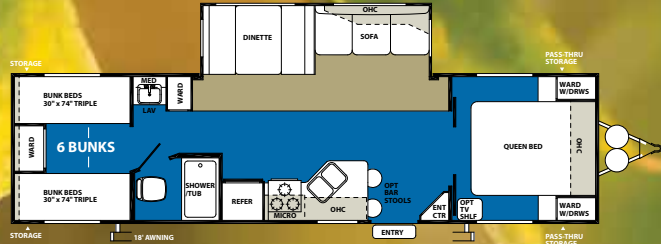
T30KQBSS



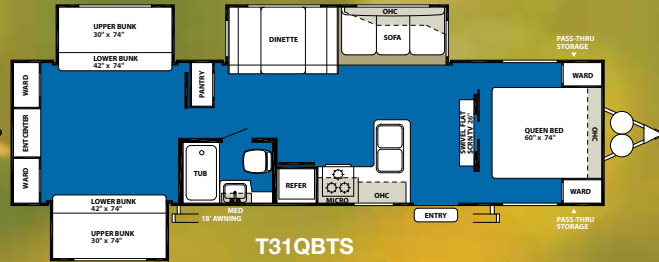
T30QBSS



T30BHB2Q



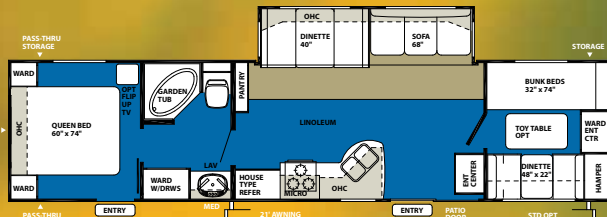
T31QBSS



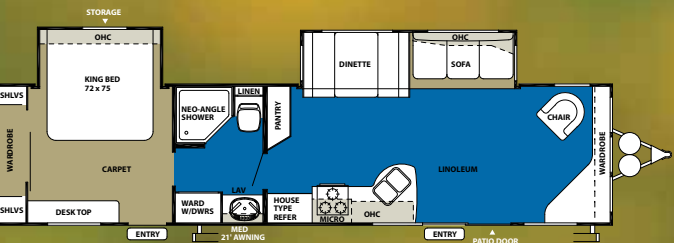
T31QBTS



T36BHBS



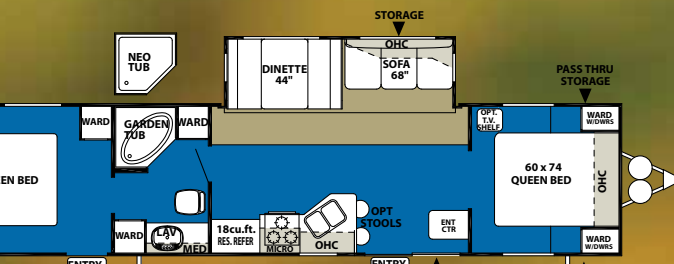
T36BHSS



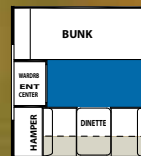
T36FLKB



T36BHSS



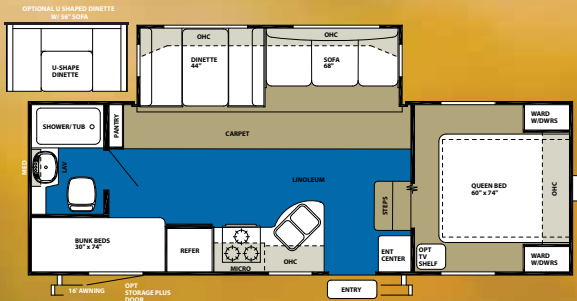
F37BHSS2Q



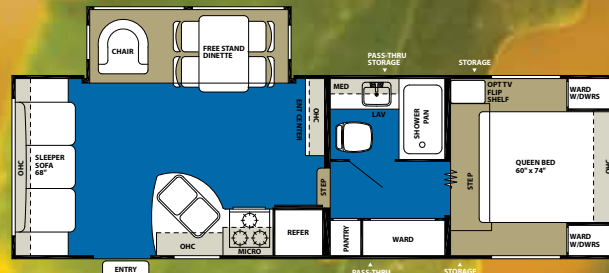
SPECIFICATIONS CONT.

	30KQBSS	30QBSS	30BHB2Q	31QBSS	31QBTS	36BHSS	36BHBS	36FLKB	37BHSS2Q
HITCH WEIGHT lb	900	980	919	805	885	990	720	845	970
AXLE WEIGHT	5985	5595	5828	5855	7255	6390	7170	7245	6630
DRY SHIP WEIGHT	6885	6575	6747	6660	8140	7380	7890	8090	7600
GVWR	11060	11140	11079	10965	11045	11150	10880	11005	11130
CCC cargo capacity	4115	4565	4300	4267	2845	3770	2950	2860	3092
EXT LENGTH	33'2"	33'2"	35'2"	34' 7"	35' 6"	37' 6"	37' 6"	38' 2"	39' 0"
EXT HEIGHT	11'1"	11' 1"	11' 1"	11' 1"	11' 1"	11' 1"	11' 1"	11' 1"	11' 1"
INT HEIGHT	80"	80"	80"	80"	80"	80"	80"	80"	80"
FRESH WATER CAP gal	42	42	42	42	42	42	42	42	42
BLACK WATER CAP gal	35	35	35	32	35	32	32	32	32
GREY WATER CAP gal	60	60	60	35	35	35	35	35	35
TIRE SIZE in	15"	15"	15"	15"	15"	15"	15"	15"	15"
AWNING SIZE ft	21'	21'	21'	18"	21"	21'	21'	21'	21'

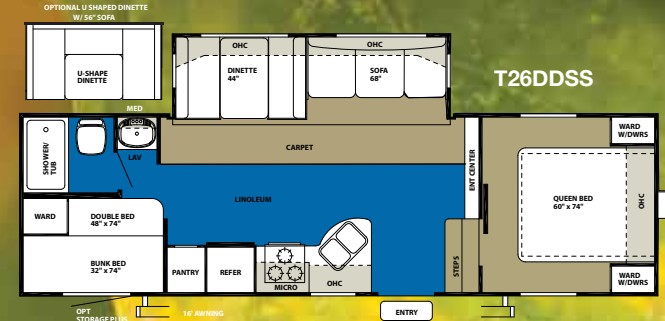




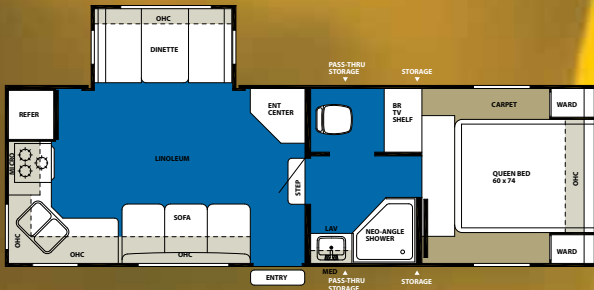
F24BHSS



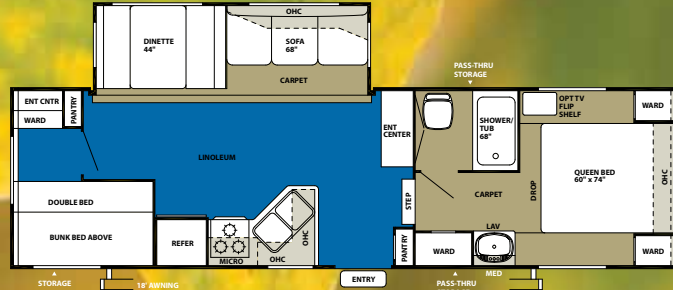
F24RLS



T26DDSS



F26RKDS



F28BHSS



Optional fiberglass front cap for fifth wheels.

### 1/2 TON TOWABLE FIFTH WHEELS



### SLIDE-OUT FIFTH WHEEL SPECIFICATIONS

	24BHSS	24RLS	F26DDSS	F26RKDS	28BHSS
HITCH WEIGHT lb	1050	1150	680	1315	1430
AXLE WEIGHT	5000	5510	5230	5185	6160
DRY SHIP WEIGHT	6050	6660	5910	6500	7590
GVMR	8050	8150	7680	8315	11590
CCC cargo capacity	1960	1455	1730	1780	3960
EXT LENGTH	26' 2"	27' 6"	28' 0"	27' 8"	31' 3"
EXT HEIGHT	11' 10"	11' 10"	11' 10"	11' 10"	12' 2"
INT HEIGHT	84"	84"	84"	84"	84"
FRESH WATER CAP gal	42	42	42	42	42
BLACK WATER CAP gal	32	32	32	32	32
GREY WATER CAP gal	35	35	35	35	64
TIRE SIZE in	15"	15"	15"	15"	15"
AWNING SIZE ft	16'	16'	21'	16'	18"



## WILDWOOD STANDARD/OPTIONS AND INTERIOR FEATURES

### CONSTRUCTION AND EXTERIOR

- Full walk on 1 piece rubber Roof w/ 12yr. warranty
- Extra large full pass through Storage (per floorplan)
- EZ lube axles
- A & E awning w/ one piece vinyl
- Jalousie windows w/ safety glass
- Steel framed 30" smooth Fiberglass main entry door
- Fender skirts
- Powder coated I-beam frame
- Cambered chassis
- Enclosed fresh water tank in a heated compartment
- 6-Gal. gas auto reignite Water heater
- Water heater by-pass
- Nitrogen filled tires
- 2" wall construction 16" (or less) on center
- R-7 fiberglass insulation throughout
- 13 ply cross micro-laminated beam header above slide-outs
- Double wipe slide-out seal (slide-out models)
- Electric slide-out systems (flush floor)
- Swing arm entry assist handle
- Two marine grade exterior speakers

### KITCHEN

- Dometic® double door refrigerator (2 yr. warranty)
- Pull out sprayer faucet
- Deep basin 60/40 residential style sink
- Microwave w/ carousel (1 yr. Warranty)
- 3-burner, high output range w/ oven (2 yr. warranty)
- Range hood w/ 12-volt exhaust fan and light
- Beau-flor durabac flooring (2 yr. warranty)
- Rounded counter tops w/ self edge
- Solid wood drawers
- Knife rack (behind cooktop)
- Large overhead cabinets
- Wall-mounted systems convenience panel
- Oil rubbed bronze hardware
- Full extension ball bearing drawer guides

### LIVING ROOM

- 80" interior height travel trailers (84" fifth wheel models)
- 69" Interior slide height (slide-out models)
- 13,500 BTU roof air conditioner w/ quick cool
- 2 large storage drawers at sofa base
- Extra large 44" pedestal booth dinette w/ large drawer (most Slide-out models)

- Large dinette picture window
- TV antenna and booster
- Standard AM/FM stereo w/ CD and 4 cube speakers
- Extra large overhead cabinets (slide-out models)
- Patio door w/ vertical blinds (36BHSS, 37BHSS2Q, 36BHBS, 36FLKB)
- Decorative wall light
- 25K BTU suburban forced air DSI furnace w/ Thermostat (2 yr. warranty)
- In-floor ducted heat
- 26" flatscreen w/DVD TV (TT 30QBSS, 30KQBSS, FW 26DDSS, 29QBDS, 31QBTS)

### BEDROOM

- Strut lifted storage area under bed
- Bedside mirrored wardrobes w/shelf
- Bedside A/C power outlets (2)
- Solid bedroom privacy doors (most models)
- Storage cabinet above bed
- Serta mattress
- Plush comforter and headboard

### BATHROOM

- 12-volt power bath roof exhaust vent
- Wooden medicine cabinet w/ mirrored door

- Thetford® fresh-water flush toilet
- Tooth brush holder and towel ring
- Vinyl tub surround

### SECURITY AND SAFETY

- LP leak detector
- Smoke detector
- Carbon monoxide detector
- Fire extinguisher
- Hitch light (travel trailers)
- Amber patio light
- Welded heavy duty safety chains (travel trailers)
- Electric Brakes (all wheels)
- GFI receptacles
- ANSI 119.5 certified
- Meets all national highway administration specifications

### WILDWOOD OPTIONS

- 6-gallon gas/electric DSI water heater
- 15,000 BTU ducted air w/ quick cool
- Stabilizer jacks (travel trailer (4) or fifth wheel (2))
- Electric front jacks (fifth wheel models)
- Cable TV/satellite hook-up
- Skylight over tub
- Tub surround
- 30-lb LP bottles w/ cover and auto change over (travel trailers)

- Fiberglass front cap on fifth wheels
- Neo-angle glass shower w/ tub Surround

Contact your Wildwood dealer for a complete list of options



FULTON CHERRY WOOD GRAIN



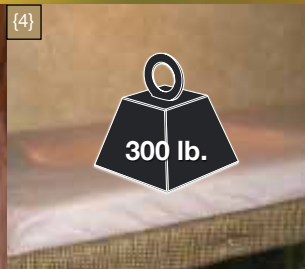
WALL COLOR



LINOLEUM



COUNTERTOP



{1} Radiused entry door {2} AM/FM radio/cd player {3} Beau Flor™ durable flooring (all vinyl no paper) {4} 300 lb. bunk rating {5} Toy lock



# Wildwood DLX GO WILD

THE WILDWOOD DELUXES SERIES. THIS SERIES IS ALL ABOUT FAMILY FUN AND FUNCTIONALITY. THE WILDWOOD DELUXE TRAILER IS THE ULTIMATE IN DESTINATION LIVING AT A GREAT VALUE. THE DELUXE IS PACKED WITH GREAT FEATURES INCLUDING RADIAL TIRES, EZ LUBE AXLES, BLACK TANK FLUSH, HEATED AND ENCLOSED UNDER BELLY, 84" HEAD ROOM, AND 74" SLIDE OUT HEAD ROOM TO NAME A FEW. THE PATIO DOOR COMES STANDARD AND ALLOWS FOR EASY ACCESS. COMFORT, CONVENIENCE AND QUALITY IS WHAT THE WILDWOOD DELUXE REPRESENTS.



382BHDS

**CHOOSE YOUR INTERIOR COLOR**  
PALISADES CHERRY (LIGHT) OR VIGOR CHERRY (DARK)



PALISADES CHERRY WOOD GRAIN



VIGOR CHERRY WOOD GRAIN



WALL COLOR



LINOLEUM



COUNTERTOP



BASIL INTERIOR



BORDEAUX INTERIOR



CAPPUCCINO INTERIOR



SADDLE INTERIOR





**322HBK Palisades Cherry wood.** This spacious rear kitchen model has fantastic countertop space and plenty of cabinet storage.





**382BHDS Cappuccino Interior.** This Deluxe has all of the amenities for entertaining including a booth dinette, fully equipped kitchen and a 64" sofa for enjoying the game.





74"  
slide out height



84"  
interior height

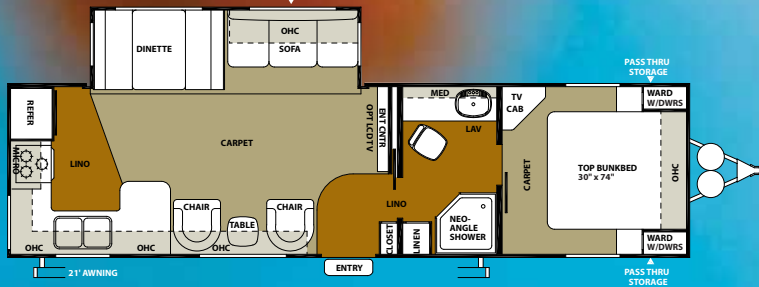
**372REDS Cappucino Interior.** The Wildwood DLX has 84" of interior height, a fireplace and the latest kitchen amenities to make you feel at home.

The pull out spray handle kitchen faucet allows for easier and more flexible use around the sink.

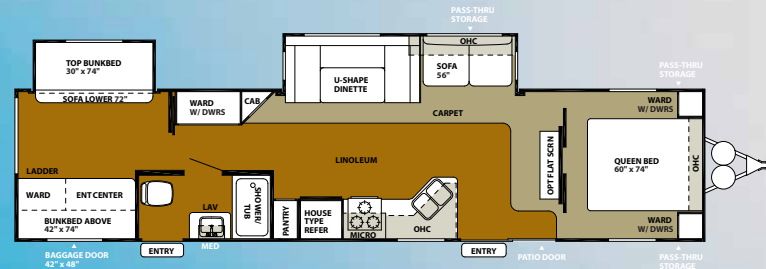
The swing arm grill is perfect for grilling out. Attached to the back of the unit, the grill arm neatly folds outward giving you a great setup for outdoor cooking. (available on both the Wildwood and Wildwood Deluxe)



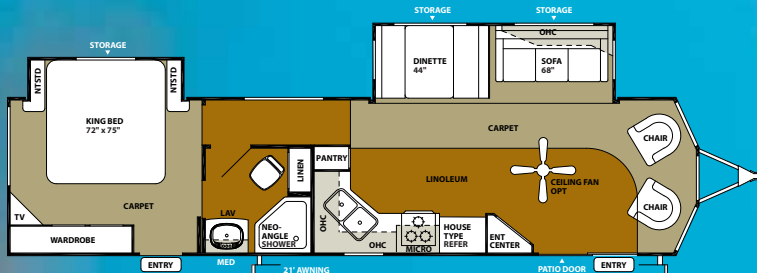




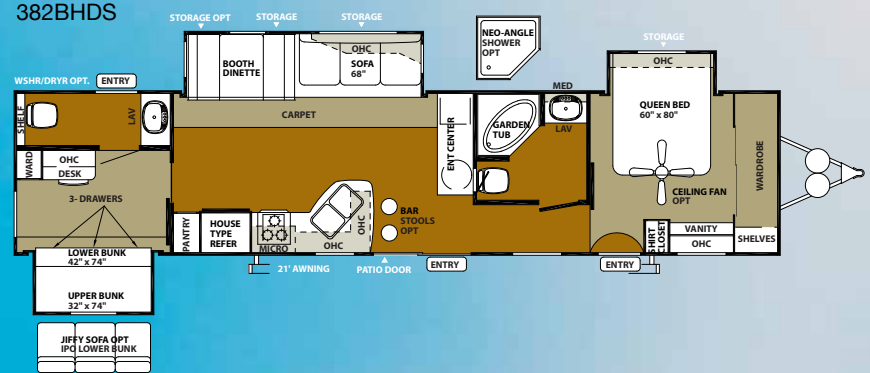
322HBK



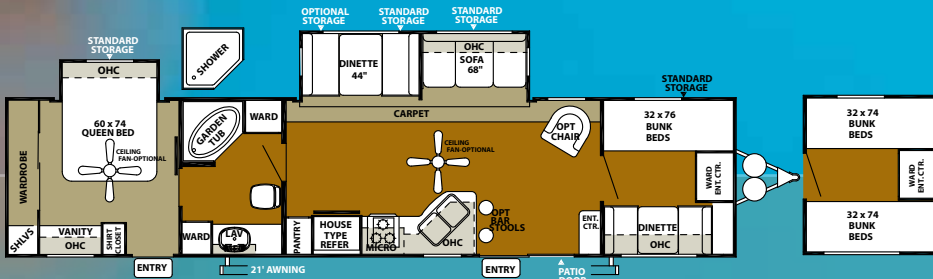
382BHDS



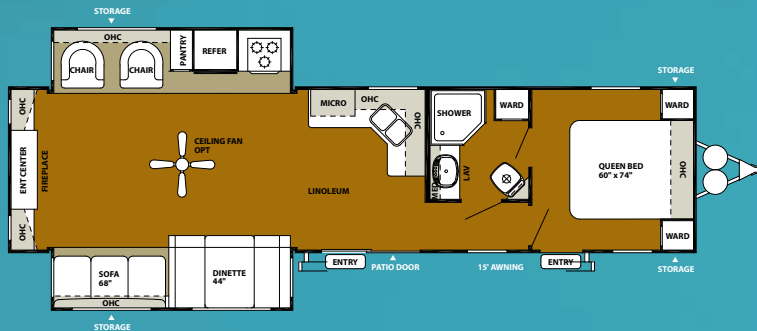
353FLFB



422-2B



372FBRB



372REDS

### DELUXE SPECIFICATIONS

	322HBK	353FLFB	372FBRB	372REDS	382BHDS	422-2B
HITCH WEIGHT lb	1000	1290	TBA	1005	1015	1185
AXLE WEIGHT	7720	7330	TBA	6270	7500	8925
DRY SHIP WEIGHT	8720	8620	TBA	9040	8515	10110
GVWR	11160	11450	TBA	11165	11175	13185
CCC cargo capacity	2381	2770	TBA	2066	2600	3016
EXT LENGTH	36' 4"	38' 5"	42' 0"	38' 7"	37' 8"	42' 2"
EXT HEIGHT	11' 9"	11' 9"	11' 9"	11' 9"	11' 9"	11' 9"
INT HEIGHT	84"	84"	84"	84"	84"	84"
FRESH WATER CAP gal	42	42	42	42	42	42
BLACK WATER CAP gal	43	43	35	43	43	35
GREY WATER CAP gal	64	43	43	43	43	43
TIRE SIZE in	15"	15"	15"	15"	15"	16"
AWNING SIZE ft	21"	21"	21'	21'	21'	21'



## WILDWOOD DELUXE STANDARD/OPTIONS AND INTERIOR FEATURES

### COMFORT AND CONVENIENCE

- 84" interior height
- Black framed safety glass tinted windows
- Water heater by-pass
- 6-gallon gas/electric DSI water heater
- Double entry doors (most floorplans)
- Pass thru storage (per floorplan)
- Dometic® 13,500 BTU central air conditioner with quick cool feature
- In-floor ducted heat with 35K BTU furnace
- Stain resistant carpet with padding
- Flush-floor slide rooms
- Systems monitor panel
- Mortise and Tenon cabinet doors
- 6' 2" tall slide rooms
- Ultra lube axles
- Solid wood drawer fronts with ball bearing drawer glides
- 2 outside speakers
- Beauflor® wood plank linoleum

### KITCHEN

- 12-volt power range hood with light
- Microwave with carousel (black)
- Acrylic 60/40 residential style kitchen sink
- Sink cover
- Built in knife holder

- Kitchen base cabinet with recess at floor level
- 3 burner Piezeo ignition range oven
- Delta (style) riser/sprayer faucet at kitchen sink
- Kitchen waste basket
- Pantry with removable shelves
- Lazy susan in kitchen (some models )
- Self edge
- Raised panel glazed cabinets
- 18 cu. ft. residential refrigerator

### LIVING ROOM

- Swivel rocker chair(s) (per floorplan)
- AM/FM/CD stereo system with remote control
- Surround sound TV hook-up
- TV antenna with booster
- Cable and satellite ready
- Extra large picture window at dinette
- Extra large 44" pedestal dinette for more comfortable dining and sleeping
- All wood slide-out fascia
- Hard lambriquin valance
- Decorative lights mounted in slide-out

### BEDROOM

- Fitted bedspreads and bunkspreads
- Bedroom roof vent
- Plywood bunk platforms
- Lift-up beds with gas struts (per floorplan)

- 300 lb. bunk rating
- Cable TV hook-up
- Stain resistant carpet with padding
- Privacy doors or sliding curtain (per floorplan)
- Serta 5 bradley

### BATHROOM

- Built-in wood medicine cabinet and mirror
- Ceiling light with convenient wall switch
- ABS tub and shower with one-piece surround

### EXTERIOR

- Smooth fiberglass radius baggage doors
- A & E side awning one-piece vinyl
- Diamond plate rock guard (travel trailers)
- Steel framed 30" smooth fiberglass radius entry door
- 15" radial tires
- Entry assist handle
- 30 lb. double LP tanks with automatic change over and EZ access
- LP tank cover (travel trailers)
- City water fill with valve

### CONSTRUCTION

- 10" Extruded I-beam frame
- Cambered chassis
- Fresh water tank
- 2" x 3" floor joists 12" on center
- 5/8" 5-ply tongue and

- groove plywood floor decking
- 2" wall studs maximum 16" on center
- Steel framed 6' entrance doors
- 5" bowed truss roof rafters
- 3/8" walk-on roof decking
- Seamless one-piece rubber roof w/ 12 year warranty
- R-7 insulation

### SECURITY AND SAFETY

- Smoke detector
- Fire extinguisher
- Carbon monoxide detector
- LP gas leak detector
- Main entry step light with interior switch
- Amber porch light with interior switch
- Main entry doorside scare light
- Screen door with safety latch
- GFI receptacles and covered patio outlet
- Welded heavy duty safety chains (travel trailers)
- Hitch light (travel trailers)
- E-Z open entry steps
- Lockable fiberglass radius baggage doors

### POPULAR OPTIONS

- Cooler slide system
- Fiberglass exterior
- 10-gallon gas/electric DSI water heater
- Skylight over tub
- Garden shower with glass door (per floorplan)
- Garden tub glass door (per floorplan)
- Extra large 8 cu. ft. double door RV refrigerator
- Double sofa air hide-a-bed
- Free standing dinette with 4 chairs
- Phone jack
- Bar stools (per floorplan)
- Stabilizer jacks
- Detachable hitch
- Outside shower
- Slide room awning(s)
- Spare tire, carrier and cover
- Exterior LP gas grill
- Double insulation (floor and roof)
- Night shades



{1} 30" radius entry door {2} Real wood toe kick  
{3} Ball bearing drawer glide



## FOREST RIVER'S HALLMARK OF EXCELLENCE

*Pre-delivery inspection facilities.*



## THAT'S 20,000 SQUARE FEET OF QUALITY ASSURANCE.

*The bare essentials for a premium product.*

Brought online in 2005, Forest River is proud of its state-of-the-art test facility. This beautiful building blends many of the old tried and true methods of testing our diverse types of RVs with new innovative ways of solving quality issues. Being centrally located to most Forest River manufacturing facilities, this 20,000 square foot PDI (Pre-delivery Inspection) test building gives immediate daily feedback to individual managers. This assures the production facilities that nothing has slipped by the plant's quality assurance personnel and the units are "green" and ready to ship.

### *Peace of mind.*

Forest River has yet another exclusive feature to offer: One year of free roadside assistance will be given to every New Wildwood customer. This is just one more way to say "Thank you" and to ensure an enjoyable traveling experience.



### Wildwood

Welcome to Our Family of Quality Built Products  
Nobody has you covered like us.

### Wildwood

XLT  
RIBBON

### Wildwood

Heritage Glen  
by Wildwood

### Wildwood

DLX

Lodge  
by Wildwood

### Wildwood

SPORT

Grand Lodge  
by Wildwood

All specifications contained herein are based on the latest product information at time of printing. Forest River reserves the right to make changes in colors, materials, equipment and specifications at any time without notice and assumes no responsibility for any errors in this brochure. PIP041808



Forest River, Inc.  
914 C.R. 1  
Elkhart, IN 46514  
(574) 533-5934  
[www.forestriverinc.com](http://www.forestriverinc.com)  
[www.forestriveraccessories.com](http://www.forestriveraccessories.com)



Scan this barcode using a QR Reader on your smart phone to learn more about Forest River.

# Wildwood Wildwood

DLX

*Call camping by it's first name "Wildwood!"*

## FOREST RIVER ENCOURAGES YOU TO BUY LOCALLY

Forest River, Inc. strongly encourages our retail customers to purchase from their local dealership whenever possible due to the following factors:

- Our dealers are as a rule, independently owned and operated businesses. Outside of those customers they personally sold products to, they are not contractually obligated to perform warranty service on Forest River products that were purchased elsewhere. There may be an occasion that you would be required to return to the point of purchase to satisfy warranty requirements.
- Although many dealerships will eventually service products not purchased at their place of business, they will usually take care of their customers and other Forest River customers who are traveling away from their local dealer as they would their own.
- Local purchases allow a customer to establish a relationship with a dealer close to home. This relationship provides the customer with a convenient location for service and support from a "home town" professional.
- The opportunity for a thorough PDI (Pre Delivery Inspection) and product orientation is an additional benefit of buying from your local dealer. Further providing the opportunity for refresher courses or the ability to get questions answered much more conveniently.
- For our Canadian customers, there are also requirements which must be met to bring an RV purchased out of the country to their home. Although not insurmountable, these requirements may involve such things as additional inspections and certifications, taxes and fees. Your local Canadian Dealer is a professional at meeting these requirements.

Forest River's goal is for all RV Owners to fully enjoy their RV experience. In light of this goal, and considering the advantages of buying local, we encourage you to be thorough when determining what product to purchase and which dealer to purchase it from as both are key to your ultimate satisfaction and the realization of your dreams.