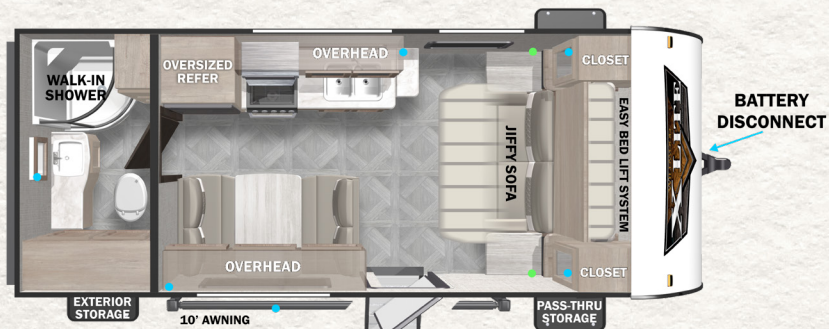
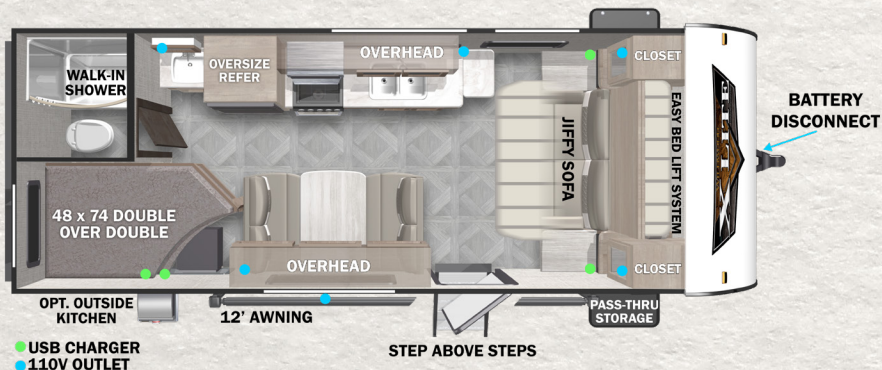


# WILDWOOD X-LITE FOREST RIVER



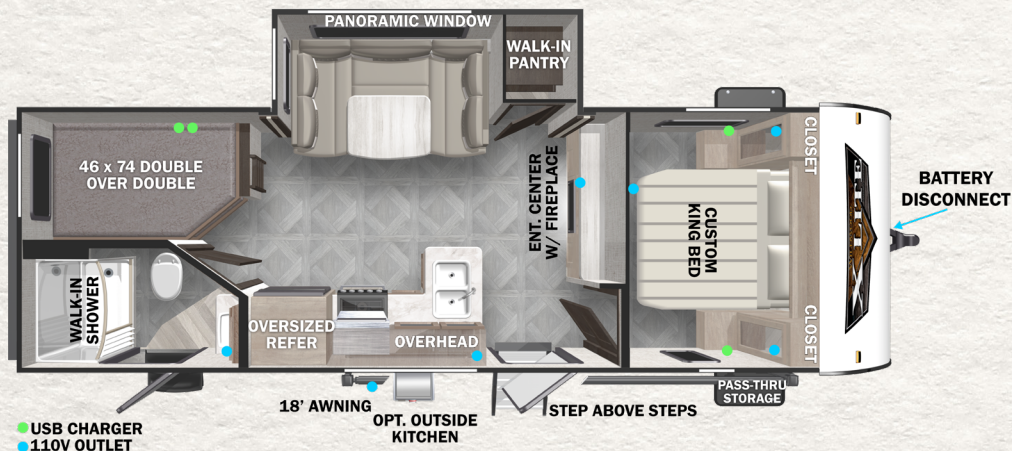
● USB CHARGER  
● 110V OUTLET

**MODEL #: 171RBXL**  
**HITCH: 521 LBS    UVW: 3,836 LBS    LENGTH: 22'8"**



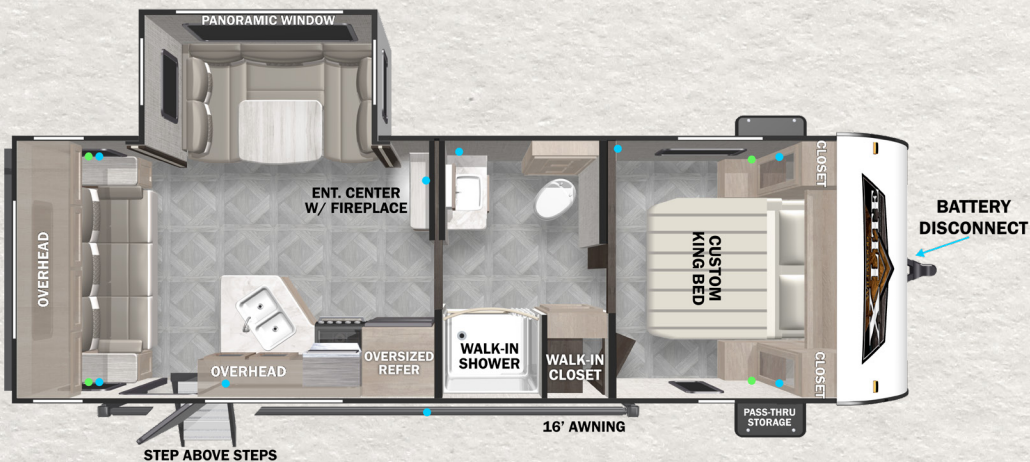
● USB CHARGER  
● 110V OUTLET

**MODEL #: 19DBXL**  
**HITCH: 520 LBS    UVW: 4,483 LBS    LENGTH: 24'8"**



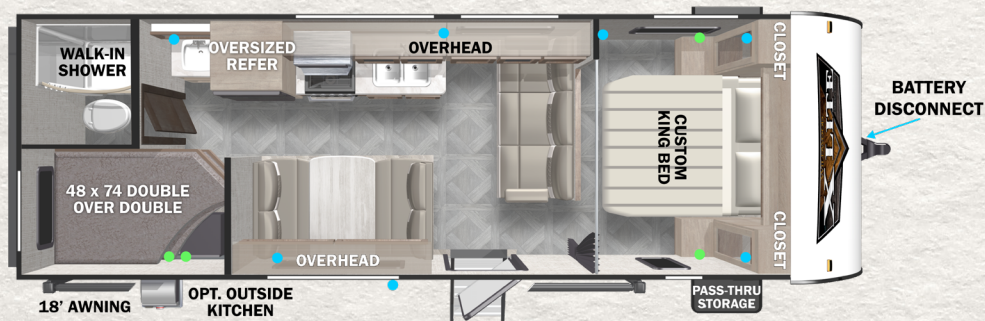
● USB CHARGER  
● 110V OUTLET

**MODEL #: 240BHXL**  
**HITCH: 570 LBS    UVW: 5,343 LBS    LENGTH: 28'10"**



● USB CHARGER  
● 110V OUTLET

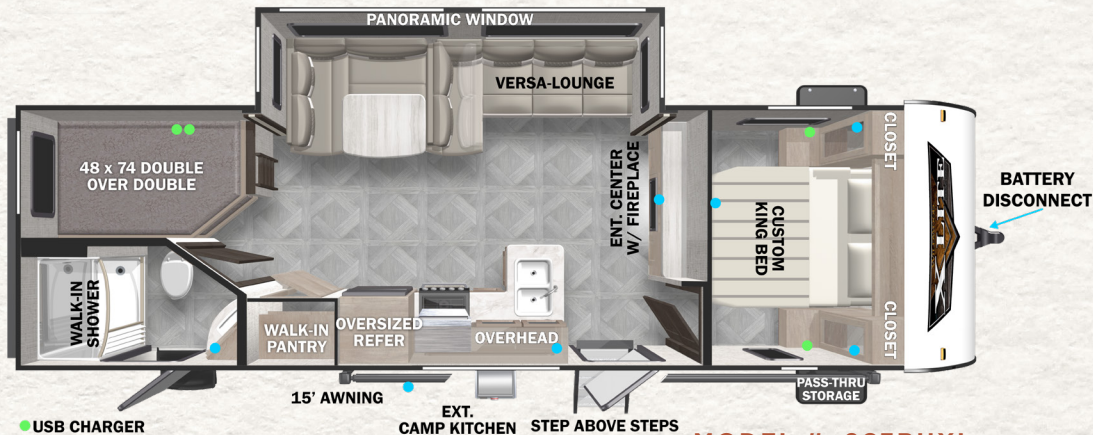
**MODEL #: 24RLXL**  
**HITCH: 550 LBS    UVW: 5,063 LBS    LENGTH: 28'11"**



● USB CHARGER  
● 110V OUTLET

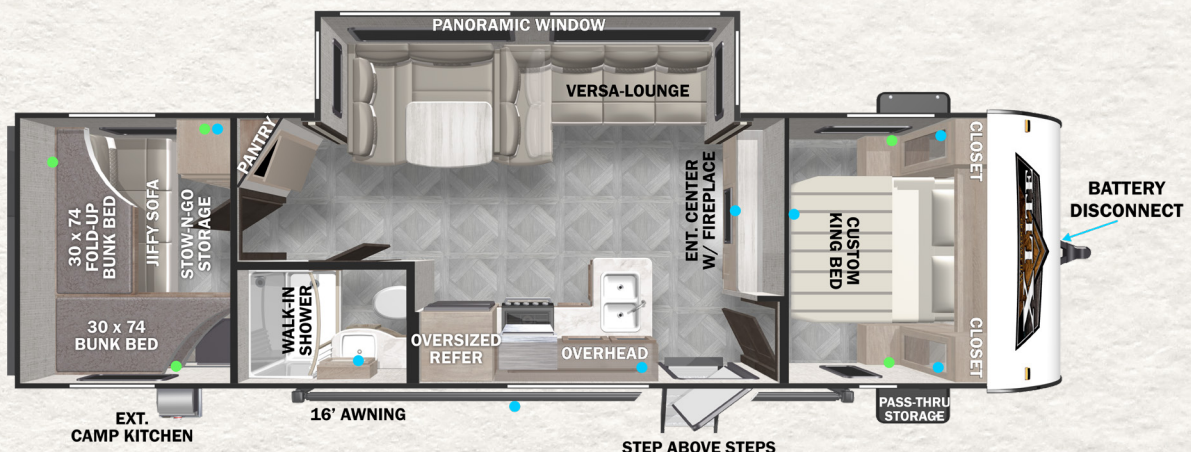
**MODEL #: 261BHXL**  
**HITCH: 450 LBS    UVW: 4,818 LBS    LENGTH: 28'8"**





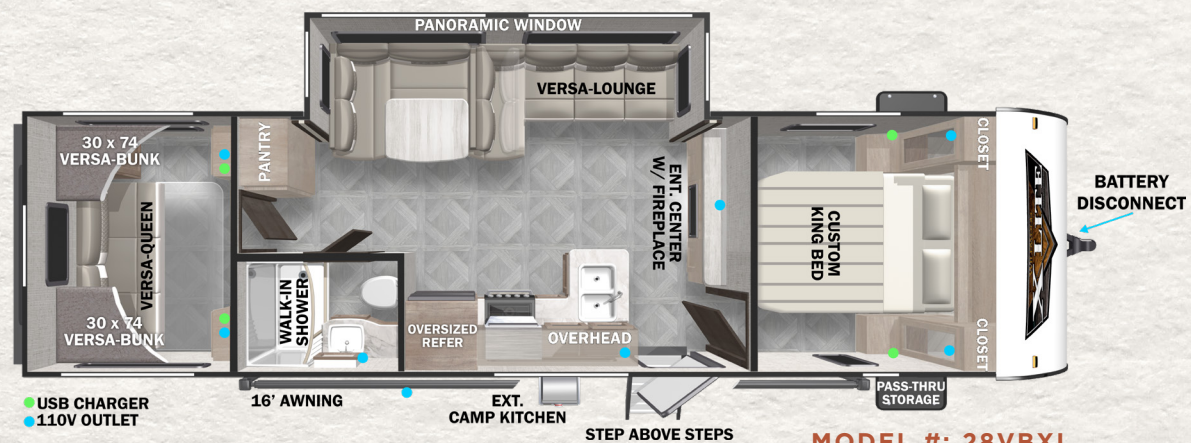
- USB CHARGER
- 110V OUTLET

**MODEL #: 263BHXL**  
**HITCH: 682 LBS U VW: 5,854 LBS LENGTH: 31'9"**



- USB CHARGER
- 110V OUTLET

**MODEL #: 273QBXL**  
**HITCH: 752 LBS U VW: 6,028 LBS LENGTH: 33'5"**



- USB CHARGER
- 110V OUTLET

**MODEL #: 28VBXL**  
**HITCH: 790 LBS U VW: 6,208 LBS LENGTH: 33'2"**

For detailed specifications, pictures & 360 Tours, visit [www.forestriverinc.com/Wildwood](http://www.forestriverinc.com/Wildwood)

OR Scan the QR code!



All information contained in this brochure is believed to be accurate at the time of publication. However, during the model year, it may be necessary to make revisions and Forest River, Inc., reserves the right to make all such changes without notice, including prices, colors, materials, equipment and specifications as well as the addition of new models and the discontinuance of models shown in this brochure. Therefore, please consult with your Forest River dealer and confirm the existence of any materials, design or specifications that are material to your purchase decision. © 2022 Wildwood, a Division of Forest River, Inc., a Berkshire Hathaway company. All Rights Reserved.

MEET YOUR X LITE DEALER