



Eagle HT



Serial #: 1UJCA0BR3T1BE0160  
Model: 29RLC EAGLE HT FW

Model Year: 2026 Dealer Name: Pete's RV Center  
444 East main St.  
Mountville, PA 17554  
USA

Standard Equipment

Optional Equipment

THE FOLLOWING ITEMS ARE STANDARD ON THIS MODEL

OPTIONAL EQUIPMENT INSTALLED ON THIS VEHICLE  
BY MANUFACTURER

STANDARD EXTERIOR EQUIPMENT

- 1.5 in. fresh water drain valve
- 5 in. Magnum Truss™ w/ Plywood Roof Decking
- Alpha Ply TPO Roof membrane (thickest roof membrane w/ Limited Lifetime Warranty)
- 50-amp detachable power cord
- LED lighting in pass through area
- Auto-grade vinyl graphics
- Automotive style front cap with max turn radius (painted on select models)
- Black tank flush
- Additional Dump Valve @ Termination
- LED light & Switch at Termination
- Climate Shield™ zero-degree tested weather protection:
- \* Fully enclosed and heated underbelly (ducted)
- \* 35,000 BTU furnace
- \* Double layer fiberglass batt insulation in ceiling and floor
- \* Double sided radiant barrier insulation (roof, floor and behind cap)
- \* PEX plumbing
- Commercial grade rubber flooring in pass through area
- Dual 30 lb. LP bottles
- Factory installed roof ladder
- Galvanized steel coated outside kitchens
- HELIX Cooling System™ (industry exclusive):
- \* Jayco exclusive insulated dual duct design
- \* Directional and closeable A/C vents
- \* Larger return air vents with user accessible filters
- Independent satellite and cable hookups (outside kitchens and/or pass through storage areas)
- LED exterior lighting package
- LP quick connect for gas griddle (next to JayPort)
- Metal slam latch baggage doors
- Nautilus 2.5 water connections
- Nitrogen filled undermount spare tire (model/option varies 15 in. or 16 in.)
- Quick connect water connections (door side hot/cold and off door side cold only)
- Slide topper/awning prep
- Stronghold VBL™ walls (laminated sidewalls, rear walls and slide out walls)
- Rear Camera Prep
- 30" X 22" Shower Skylight

LUXURY PACKAGE (MANDATORY)

- Blackout roller shades with reflective side throughout
- Electric auto-leveling
- GE 10 cu. ft. 12V refrigerator w/ black glass front
- JayPort 2 in. mount (for outside accessories)
- Residential-style glass shower door
- Washer/dryer prep (select models)
- GE 30 in. over-the-range black and stainless microwave with exhaust fan
- GE black and stainless 21 in. range with edge to edge grates
- Multi-Function "ALL in ONE" Black Stainless-steel kitchen sink
- Residential 66 in. x 80 in. OLYMPIC size mattress
- Magnetic Catches for all Drawers & Doors
- Solid Surface Kitchen Countertop(s)
- LED fireplace with 5,000 BTU electric space heater
- JayCommand w/ Monitor Switch Panel
- Exterior Light & Outlet at the JayPort Location

STANDARD INTERIOR EQUIPMENT

- 2-piece high gloss bathroom surround
- Teak Seat Shower Prep
- 5/8 in. tongue-and-groove plywood flooring
- 75 lb. full extension drawer guides
- Bathroom skylight
- Bedroom TV, SAT, CABLE prep
- C.P.A.P. prepped bedroom (both sides)
- Extra 120V power outlets in kitchen and slide rooms (where applicable)
- Gas strutted under bed storage
- High Sheen handcrafted door/drawer fronts
- Medicine cabinet with custom framed mirror
- Kitchen faucet with pull-out sprayer
- Porcelain foot flush toilet
- Residential vinyl flooring throughout (NO CARPET)
- Theater seating (select models)
- Tri-fold hide-a-bed sofa with residential memory foam sleep surface (select models)
- USB-C 12v charging ports (multiple locations throughout)
- Water Shutoff at all faucet locations
- NuVoH2O Water Treatment System (filters included)
- 100% No Floor Heat Vents
- 4" Interior Ceiling Fan Lighting (4000K lumen)

CUSTOMER VALUE PACKAGE (MANDATORY)

- 15K BTU "Whisper Quiet" A/C and bedroom A/C prep
- 4K Ultra LED HD Smart TV in living room (40")
- 50-amp service with dual A/C ducts
- 60K on-demand tankless water heater
- Custom machined aluminum rims
- Electric patio awning (integrated dimmable LED lights w/ JAYCOMMAND)
- Hidden hinges on cabinet doors
- Interior "Blue Sync" Audio Connect w/ MB Quart Sound (TV & Phone)
- Exterior "Blue Sync" Audio Connect w/ MB Quart Sound (TV & Phone)
- Keyed-Alike™ lock system
- MORryde Step Above™ entrance steps (main entrance) with blue LED light
- Overlander I solar package
- Rain proof bathroom power vent
- Rear 2 in. towing receiver (4-pin connector on fifth wheels only)
- Winegard Air 360 + Antenna & Router Prep (NOW 5G)
- Inverter pre-wire (multiple locations throughout)

4 STAR HANDLING PACKAGE (MANDATORY)

- Dexter® Axles with NEV-R-Adjust® brakes and E-Z Lube® hubs
- 15" Rainier "E" Rated tires OR 16" Rainier "H" Rated tires
- MORryde® CRE-3000™ rubberized suspension
- Wet bolt fasteners with bronze bushings

Base price	61,125.00
USA STANDARDS	n/c
CUSTOMER VALUE PACKAGE	6,263.00
LUXURY PACKAGE	7,493.00
FOUR STAR HANDLING PACKAGE	3,743.00
OVERLANDER I SOLAR PACKAGE	n/c
STANDARD CAMPING PACKAGE	n/c
2ND 15,000 AC IN BEDROOM	1,043.00
STANDARD BRAKE	n/c
15" TIRE	n/c
FREE STANDING TABLE,CHAIRS(2),BENCH SEAT	n/c
FURNITURE CUP HOLDER TABLES-1 PAIR	113.00

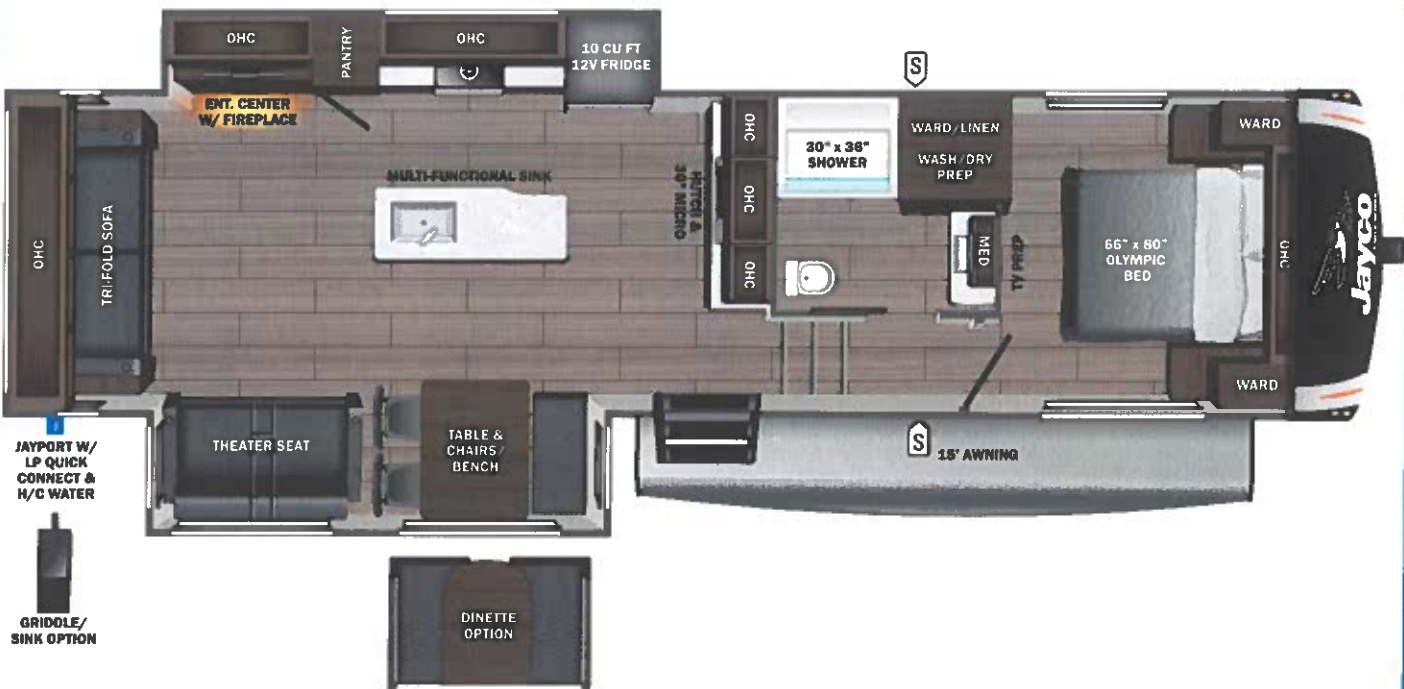
UNIT TOTAL 79,780.00

DEALER INSTALLED OPTIONS

Manufacturer's Suggested Retail Price

\$79,780.00

TOTAL AMOUNT DOES NOT INCLUDE STATE AND LOCAL TAXES OR LICENSE FEES. THE PRICE SHOWN ABOVE MAY OR MAY NOT BE REPRESENTATIVE OF THE ACTUAL SELLING PRICE OF SIMILAR RECREATIONAL VEHICLES IN YOUR AREA.



**UVW** 9747 lbs **Sleeps** **Length** 33' 11.5"

DIMENSIONS

Exterior height:.....156.25"  
Exterior width:.....96.50"  
GVWR:.....11200  
GAWR (front):.....5145  
GAWR (rear):.....5145  
Approx. Gross Cargo Carrying Capacity(GCCC):.....1453

TIRES

Tire size (front):.....  
Tire size (mid):.....  
Tire size (rear):.....  
Tire size (spare):.....

CAPACITIES

Fresh water tank (gals.):...52.00  
Gray water tank (gals.):....82.00  
Black water/toilet tank (gals.):.....45.00  
Propane (lbs.):.....60  
Propane (gals.):.....14  
Water heater (gals.):.....0.25

SEATING & SLEEPING

\*\*\*Some dimensions may be rounded and may vary from the actual dimensions\*\*\*  
\*\*\*Weights may be estimated calculations and may vary from the actual weight - refer to the vehicle weight labels for actual weights\*\*\*  
Floorplans, features and specifications are subject to change without notice.

