



Eagle SLE



Serial #: 1UJCA0BRXT1G50123
Model: 30RLT EAGLE SLE FW

Model Year: 2026 Dealer Name: Pete's RV Center
444 East main St.
Mountville, PA 17554
USA

Standard Equipment

THE FOLLOWING ITEMS ARE STANDARD ON THIS MODEL

- 1.5 in. fresh water drain valve
- 5 in. Magnum Truss™ with plywood roof decking
- Alpha Ply TPO Roof membrane (thickest roof membrane with Limited Lifetime Warranty)
- 50-amp detachable power cord
- LED lighting in pass through area
- Auto-grade vinyl graphics
- Automotive style front cap with max turn radius
- Black tank flush
- Climate Shield™ zero-degree tested weather protection:
- * Fully enclosed and heated underbelly (ducted)
- * 30K BTU furnace
- * Double layer fiberglass batt insulation in ceiling and floor
- * PEX plumbing
- Commercial grade rubber flooring in pass through area
- Dual 30 lb. LP bottles
- Galvanized steel coated outside kitchens
- HELIX Cooling System™ (industry exclusive):
- * Jayco exclusive insulated dual duct design
- * Directional and closeable A/C vents
- * Larger return air vents with user accessible filters
- Independent satellite and cable hookups (outside kitchens and/or pass through storage areas)
- LED exterior lighting package
- LP quick connect for gas griddle (next to JayPort®)
- Metal slam latch baggage doors
- Nitrogen filled undermount spare tire (15 in.)
- Quick connect water connections (door side hot/cold)
- Slide topper/awning prep
- Stronghold VBL™ walls (laminated sidewalls, rear walls and slide out walls)
- Rear camera prep
- 15" "E" Rated tires (including spare)

STANDARD INTERIOR EQUIPMENT

- 2-piece high-gloss bathroom surround
- Teak seat shower prep
- 5/8 in. tongue-and-groove plywood flooring
- 75 lb. full-extension drawer guides
- Bathroom skylight
- Bedroom TV, SAT, and cable prep
- C.P.A.P.-prepped bedroom (both sides)
- Gas-strutted under-bed storage
- High-sheen handcrafted door and drawer fronts
- Medicine cabinet with custom-framed mirror
- Kitchen faucet with pull-out sprayer
- Porcelain foot-flush toilet
- Residential vinyl flooring throughout (no carpet)
- Tri-fold hide-a-bed sofa with residential memory foam sleep surface (select models)
- USB-C 12V charging ports (multiple locations throughout)
- Water shutoff at all faucet locations
- 100% no floor heat vents
- 4 in. interior ceiling can light (4K lumen)
- 30 in. x 22 in. shower skylight
- Dexter® suspension
- Wet bolt fasteners with bronze bushings

CUSTOMER VALUE PACKAGE

- 15K BTU "Whisper Quiet" A/C and bedroom A/C prep
- 40" 4K Ultra LED HD Smart TV in living room
- 50-amp service with dual A/C ducts
- 60K on-demand tankless water heater
- Custom machined aluminum rims
- Electric patio awning
- Hidden hinges on cabinet doors
- Interior "Blue Sync" Audio Connect with MB Quart Sound (TV & phone)
- Keyed-Alike™ lock system
- MORryde Step Above™ entrance step
- Rain proof bathroom power vent
- Rear 2 in. towing receiver (4-pin connector on fifth wheels only)
- Winegard Air 360 antenna
- 8 cu. ft. 12V refrigerator
- Inverter pre-wire throughout interior/exterior
- Electric rear stabilizer jacks
- Magnetic catches for all drawers & doors
- Overlander 1 Solar Package (200W panel and 30-amp solar controller) (FORCED)

Optional Equipment

OPTIONAL EQUIPMENT INSTALLED ON THIS VEHICLE BY MANUFACTURER

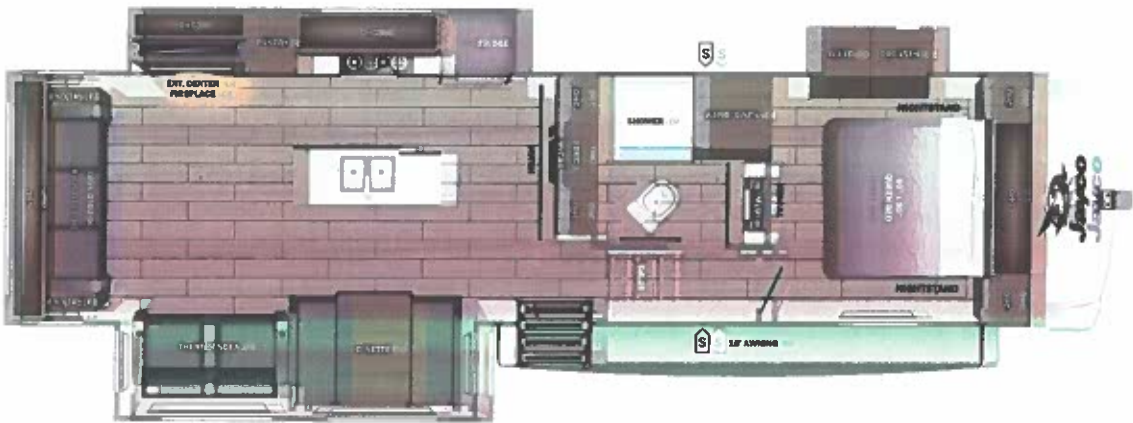
Base price	60,743.00
USA STANDARDS	n/c
CUSTOMER VALUE PACKAGE	6,263.00
OVERLANDER 1 SOLAR PACKAGE	n/c
2ND 15,000 AC IN BEDROOM	1,043.00
FREE STANDING TABLE,CHAIRS(2),BENCH SEAT	293.00

UNIT TOTAL 68,342.00

DEALER INSTALLED OPTIONS

Manufacturer's Suggested Retail Price \$68,342.00

TOTAL AMOUNT DOES NOT INCLUDE STATE AND LOCAL TAXES OR LICENSE FEES. THE PRICE SHOWN ABOVE MAY OR MAY NOT BE REPRESENTATIVE OF THE ACTUAL SELLING PRICE OF SIMILAR RECREATIONAL VEHICLES IN YOUR AREA.



UVW
9438 lbs



Sleeps



Length
33' 11.5"

DIMENSIONS

Exterior height:.....147.00"

Exterior width:.....97.00"

WEIGHTS

GVWR:.....10900

GAWR (front):.....5145

GAWR (rear):.....5145

Approx. Gross Cargo Carrying

Capacity (GCCC):.....1462

TIRES

Tire size (front):.....

Tire size (mid):.....

Tire size (rear):.....

Tire size (spare):.....

CAPACITIES

Fresh water tank (gals.):...52.00

Gray water tank (gals.):....82.00

Black water/toilet tank

(gals.):.....45.00

Propane (lbs.):.....60

Propane (gals.):.....14

Water heater (gals.):.....0.25

SEATING & SLEEPING

Some dimensions may be rounded and may vary from the actual dimensions

***Weights may be estimated calculations and may vary from the actual weight

- refer to the vehicle weight labels for actual weights***

Floorplans, features and specifications are subject to change without notice.

2+3
YEAR YEAR
LIMITED STRUCTURAL
WARRANTY