



Eagle SLE



Serial #: 1UJCA0BN4T1G20158
Model: 24MLE EAGLE SLE FW

Model Year: 2026 Dealer Name: PETE'S RV CENTER
417 JOHN FITCH BLVD.
S. WINDSOR, CT 06074
USA

Standard Equipment

THE FOLLOWING ITEMS ARE STANDARD ON THIS MODEL

- STANDARD EXTERIOR EQUIPMENT**
- 1.5 in. fresh water drain valve
 - 5 in. Magnum Truss™ w/ Plywood Roof Decking
 - Alpha Ply TPO Roof membrane (thickest roof membrane w/ Limited Lifetime Warranty)
 - 50-amp detachable power cord
 - LED lighting in pass through area
 - Auto-grade vinyl graphics
 - Automotive style front cap with max turn radius
 - Black tank flush
 - Climate Shield™ zero-degree tested weather protection:
 - * Fully enclosed and heated underbelly (ducted)
 - * 30,000 BTU furnace
 - * Double layer fiberglass batt insulation in ceiling and floor
 - * PEX plumbing
 - Commercial grade rubber flooring in pass through area
 - Dual 30 lb. LP bottles
 - Galvanized steel coated outside kitchens
 - HELIX Cooling System™ (industry exclusive):
 - * Jayco exclusive insulated dual duct design
 - * Directional and closeable A/C vents
 - * Larger return air vents with user accessible filters
 - Independent satellite and cable hookups (outside kitchens and/or pass through storage areas)
 - LED exterior lighting package
 - LP quick connect for gas griddle (next to JayPort)
 - Metal slam latch baggage doors
 - Nitrogen filled undermount spare tire (15 in.)
 - Quick connect water connections (door side hot/cold)
 - Slide topper/awning prep
 - Stronghold VBL™ walls (laminated sidewalls, rear walls and slide out walls)
 - Rear Camera Prep
 - 15" "E" Rated tires (including spare)

- STANDARD INTERIOR EQUIPMENT**
- 2-piece high gloss bathroom surround
 - Teak Seat Shower Prep
 - 5/8 in. tongue-and-groove plywood flooring
 - 75 lb. full extension drawer guides
 - Bathroom skylight
 - Bedroom TV, SAT, CABLE prep
 - C.P.A.P. prepped bedroom (both sides)
 - Gas strutted under bed storage
 - High Sheen handcrafted door/drawer fronts
 - Medicine cabinet with custom framed mirror
 - Kitchen faucet with pull-out sprayer
 - Porcelain foot flush toilet
 - Residential vinyl flooring throughout (NO CARPET)
 - Tri-fold hide-a-bed sofa with residential memory foam sleep surface (select models)
 - USB-C 12v charging ports (multiple locations throughout)
 - Water Shutoff at all faucet locations
 - 100% No Floor Heat Vents
 - 4" Interior Ceiling Can Lighting (4000K lumen)
 - 30"X 22" Shower Skylight
 - Dexter Suspension
 - Wet bolt fasteners with bronze bushings
- CUSTOMER VALUE PACKAGE (MANDATORY)**
- 15K BTU "Whisper Quiet" A/C and bedroom A/C prep
 - 40" 4K Ultra LED HD Smart TV in living room
 - 50-amp service with dual A/C ducts
 - 60K on-demand tankless water heater
 - Custom machined aluminum rims
 - Electric patio awning
 - Hidden hinges on cabinet doors
 - Interior "Blue Sync" Audio Connect w/ MB Quart Sound (TV & Phone)
 - Keyed-Alike™ lock system
 - MORryde Step Above™ entrance step
 - Rain proof bathroom power vent
 - Rear 2 in. towing receiver (4-pin connector on fifth wheels only)
 - Winegard Air 360 Antenna
 - 8 cu. ft. 12V refrigerator
 - Inverter pre-wire throughout interior/exterior
 - Electric rear stabilizer jacks
 - Magnetic Catches for all Drawers & Doors
 - Overlander I solar package

Optional Equipment

OPTIONAL EQUIPMENT INSTALLED ON THIS VEHICLE BY MANUFACTURER

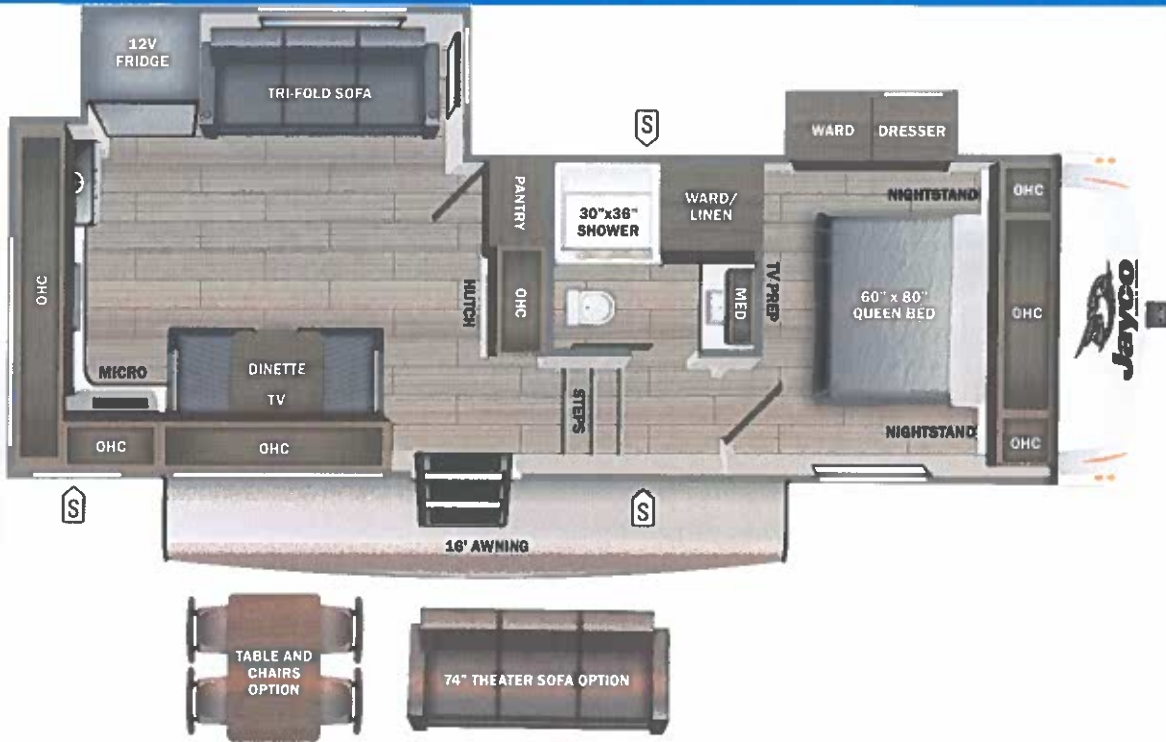
Base price	50,243.00
USA STANDARDS	n/c
CUSTOMER VALUE PACKAGE	6,263.00
OVERLANDER I SOLAR PACKAGE	n/c
ROOF VENT IN BEDROOM	n/c
DINETTE	n/c
TRI-FOLD SOFA	n/c

UNIT TOTAL 56,506.00

DEALER INSTALLED OPTIONS

Manufacturer's Suggested Retail Price \$56,506.00

TOTAL AMOUNT DOES NOT INCLUDE STATE AND LOCAL TAXES OR LICENSE FEES. THE PRICE SHOWN ABOVE MAY OR MAY NOT BE REPRESENTATIVE OF THE ACTUAL SELLING PRICE OF SIMILAR RECREATIONAL VEHICLES IN YOUR AREA.



UVW
7995 lbs



Sleeps



Length
29' 2.75"

DIMENSIONS

Exterior height:.....146.50"

Exterior width:.....96.50"

WEIGHTS

GVWR:.....9500

GAWR (front):.....5145

GAWR (rear):.....5145

Approx. Gross Cargo Carrying Capacity (GCCC):.....1505

TIRES

Tire size (front):.....

Tire size (mid):.....

Tire size (rear):.....

Tire size (spare):.....

CAPACITIES

Fresh water tank (gals.):...52.00

Gray water tank (gals.):...82.00

Black water/toilet tank (gals.):.....45.00

Propane (lbs.):.....60

Propane (gals.):.....14

Water heater (gals.):.....0.25

SEATING & SLEEPING

Some dimensions may be rounded and may vary from the actual dimensions

***Weights may be estimated calculations and may vary from the actual weight

- refer to the vehicle weight labels for actual weights***

Floorplans, features and specifications are subject to change without notice.

