



Pinnacle



Serial #: 1UJCF0BV4P1RW0091
 Model: 38FLGS PINNACLE FW

Model Year: 2023 Dealer Name: PETE'S RV CENTER
 5728 DORCHESTER RD
 NORTH CHARLESTON, SC 29418
 USA

Manufacturer's Suggested Retail Price \$158,822.00

TOTAL AMOUNT DOES NOT INCLUDE STATE AND LOCAL TAXES OR LICENSE FEES. THE PRICE SHOWN ABOVE MAY OR MAY NOT BE REPRESENTATIVE OF THE ACTUAL SELLING PRICE OF SIMILAR RECREATIONAL VEHICLES IN YOUR AREA.

Standard Equipment

THE FOLLOWING ITEMS ARE STANDARD ON THIS MODEL AT NO EXTRA CHARGE

- EXTERIOR**
- Stronghold VBL™ aluminum framed and vacuum bond laminated gelcoated fiberglass exterior walls (including slide room end walls)
 - 12" structural steel I-beam with 10" steel drop frame
 - Magnum Truss™ XL6™ Roof System (strongest tested roof in the industry) with one piece, seamless roof material with a 20 year warranty material
 - Climate Shield™ 0° tested weather protection:
 - Fully enclosed and heated underbelly (ducted)
 - 40,000 BTU output furnace
 - Double layer fiberglass batt insulation (roof & floor)
 - PEX plumbing, 2" block foam & reflective foil
 - JaySMART™ (Safety Markers And Reverse Travel) LED lighting (patent-pending)
 - Painted fiberglass front and rear cap with double clear coat and built-in specialty LED lighting
 - Frameless dark tinted safety-glass windows
 - Custom automotive-grade vinyl exterior graphics
 - 102" widebody construction
 - Skirt metal enclosed drop frame
 - LED exterior lighting package
 - Dual 30 lb. propane bottles with auto regulator
 - Doorside compartment framed and vented for third propane bottle
 - Pass-through storage with Slam-latch™ doors
 - Digital TV antenna with Wi-Fi extender
 - Exterior marine-grade speakers
 - Fully enclosed, universal docking center:
 - Selectable water connections
 - Quick-connect outside shower
 - Black tank flush
 - Winterization and sanitation
 - Independent satellite wiring
 - Whole coach cable hookups
 - Water heater bypass
 - Battery disconnect
 - Under-mounted spare tire (16 in. Goodyear®)
 - JayPort outside griddle prep (standard on all floorplans without a standard outside kitchen)
 - Built in sewer hose carrier
 - 3,000 lb. tow hitch with 4-way pin
 - Inverter pre-wire to select outlets
 - 120V heat blankets on all tanks plus 12V heat tape on fresh water line
- CUSTOMER VALUE PACKAGE (MANDATORY)**
- 15K BTU "Whisper Quiet" A/C with heat pump (main)
 - 15K BTU "Whisper Quiet" A/C (bedroom)
 - Electric patio awning with integrated LED lights
 - Gas/electric DSI water heater
 - Custom machined aluminum rims
 - Keyed-Alike™ lock system
 - Rooftop and ground solar prep
 - Backup, main entrance door and side observation security camera prep (includes a power switch in the bedroom to use the optional 7 in. monitor for security)
 - Hidden hinges on cabinet doors
 - Home entertainment system with subwoofer
 - 50 in. 4K SMART LED HDTV with fully digital HDMI® output and two additional HDMI® cables
 - Bluetooth® wireless interior controls with dimmer switches
 - Residential king (72 in. x 80 in.) mattress
 - Refrigerator temperature sensors
- 5 STAR HANDLING PACKAGE (MANDATORY)**
- 17.5 in. Uniroyal H rated tires
 - MORryde® rubber pin box
 - Dexter® axles with Nev-R-Adjust® brakes, E-Z Lube® hubs & 4,000 lb. leaf springs
 - MORryde® LRE-4000™ rubberized suspension
 - Wet bolt fasteners and bronze bushings

- INTERIOR**
- Solid hardwood slide fascia
 - Handcrafted hardwood glazed doors, stiles, drawers and trim
 - 5/8 in. tongue-and-groove joined plywood floor and 3/8 in. roof decking
 - Vinyl flooring (made in the USA)
 - Ceiling fan (select models)
 - LED interior lighting throughout
 - LED accent lighting above slideouts
 - Tri-fold hide-a-bed sofa with sleep surface (select models)
 - Dual USB charging ports throughout
 - 12V charging station
 - JayVoice voice command system - controls lighting, A/C and furnace
 - "Shoe garage" in hallway step (select models)
 - Flip-up tabletop storage next to tri-fold sofa (select models)
 - Soft close, heavy-duty, 75 lb. full extension, steel ball-bearing drawer guides
 - Toe kick nightlights in bedroom, bathroom and kitchen
 - Pull-out spice rack above microwave (select models)
 - Farmhouse stainless steel kitchen sink
 - Residential-grade, pull-out kitchen faucet
 - Extra 120V power outlets in kitchen and slide rooms
 - Flip-up countertop extension with 24 in. x 24 in. butcher block bar top (select models)
 - Pull-out utility drawer under kitchen sink
 - Residential quilted bedspread and pillows
 - Cedar-lined front wardrobe closet
 - Gas-strutted under-bed storage
 - C.P.A.P. prepped bedroom (120V outlets & night stands)
 - Carbon monoxide and LP detector
 - Flip-up hidden storage in bedroom chest of drawers (select models)
 - Built-in laundry hamper in wardrobe (select models)
 - Cup holders in bedroom nightstands (N/A 36SSWS)
 - Bathroom skylight
 - LED backlit custom framed mirror and medicine cabinet
 - Residential bathroom backsplash
 - Vessel bowl sink with high rise faucet in main bath
 - Porcelain toilet with foot flush
- LUXURY PACKAGE (MANDATORY)**
- 6-point hydraulic auto-leveling system
 - MORryde® StepAbove™ steps (main) w/ strut assist
 - 2nd electric patio awning with integrated LED lights
 - Powered 50-amp cord reel
 - JAYCOMMAND® "Smart RV" system
 - Cellular prep for 4G WiFi antenna and JAYCOMMAND®
 - High gloss gelcoated sidewalls
 - Oversized multi-battery compartment (industry leading room for 4-6 batteries)
 - 32" 4K outside Smart LED TV
 - Solid hardwood cabinet stiles
 - Central vacuum system with dust port
 - Day/night roller shades in living room
 - Frameless dark tinted safety-glass windows
 - Free-standing (no pedestal) table with leaf, (2) free-standing and (2) folding chairs
 - LED fireplace with electric space heater
 - Fresh Water Drinking System (patent-pending) for fresh drinking water at the kitchen sink and water/ice dispensers in the residential refrigerator
 - Residential refrigerator with ice maker and 1800W pure sine wave inverter
 - 30 in. residential microwave
 - Residential 24 in. Insignia™ stove (3.73 cu. ft. with 12K BTU high output burner)
 - Residential solid-surface kitchen countertop with solid-surface sink covers
 - 32 in. 4K Smart LED bedroom TV
 - Residential walk-in shower with shampoo/soap holder, teak seat and shower tower
 - Washer/dryer prep

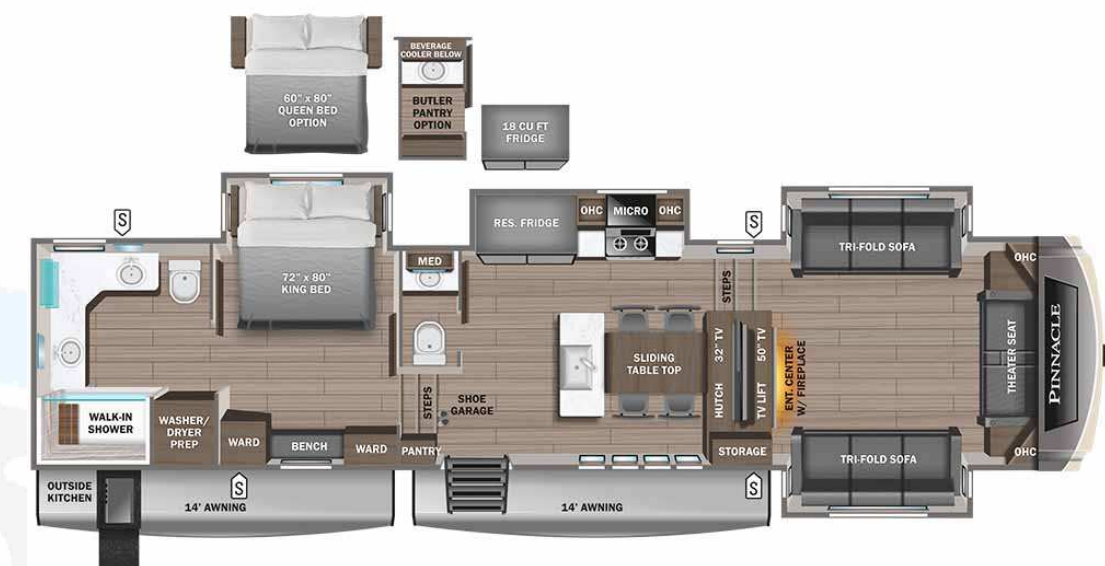
Optional Equipment

OPTIONAL EQUIPMENT INSTALLED ON THIS VEHICLE BY MANUFACTURER

Base price	137,543.00
Modern Farmhouse Graphics Package	n/c
USA Standards	n/c
Customer Value Package	4,500.00
Pinnacle Luxury Package	12,450.00
Five Star Handling Package	n/c
Overlander II Solar Package	1,943.00
3rd AC 15,000 BTU in Living Room	1,193.00
21 Cu. Ft. Residential Refrigerator with Inverter	n/c
Generator LP Prep	1,193.00
Gas/Electric DSI Water Heater	n/c
Pre-Wired Sanicon Dump System	n/c
Backup, Side and Entry Door Observation Camera Prep	n/c
Tinted Safety Glass	n/c
Windows	n/c
Roof Ladder (Std)	n/c
Electronic Drum Brakes	n/c
Automotive Style Fiberglass Rear Cap	n/c
King Bed	n/c
Half Bath	n/c

UNIT TOTAL **158,822.00**

DEALER INSTALLED OPTIONS



UVW 15346 lbs **Sleeps** **Length** 44' 4.5"

DIMENSIONS

Exterior height:.....159.50"

Exterior width:.....102.00"

WEIGHTS

GVWR:.....17750

GAWR (front):.....8000

GAWR (rear):.....8000

Approx. Gross Cargo Carrying Capacity (GCCC):.....2404

Tires

Tire size (front):.....215/75R17.5H

Tire size (mid):.....

Tire size (rear):.....215/75R17.5H

Tire size (spare):.....215/75R17.5H

CAPACITIES

Fresh water tank (gals.):...75.00

Gray water tank (gals.):...82.50

Black water/toilet tank (gals.):.....74.00

Propane (lbs.):.....120

Propane (gals.):.....28

Water heater (gals.):.....16.00

SEATING & SLEEPING

Some dimensions may be rounded and may vary from the actual dimensions
 Weights may be estimated calculations and may vary from the actual weight
 - refer to the vehicle weight labels for actual weights***
 Floorplans, features and specifications are subject to change without notice.

