



Eagle HT



Serial #: 1UJBA0BU7P1C70193
 Model: 312BHOK EAGLE HT TT

Model Year: 2023 Dealer Name: PETE'S RV CENTER
 417 JOHN FITCH BLVD.
 S. WINDSOR, CT 06074
 USA

Standard Equipment

THE FOLLOWING ITEMS ARE STANDARD ON THIS MODEL AT NO EXTRA CHARGE

- EXTERIOR**
- StrongholdVBL™ aluminum framed and vacuum bond laminated gelcoated fiberglass exterior walls (including rear wall and slide room end walls)
 - Magnum Truss™ Roof System with one piece seamless roofing material with 20 year warranty
 - Climate Shield™ zero-degree tested weather protection:
 - Fully enclosed and heated underbelly (ducted)
 - 35,000 BTU output furnace
 - Double layer fiberglass batt insulation in ceiling and floor
 - Double sided radiant barrier insulation (roof, floor, and behind cap)
 - PEX plumbing
 - HELIX Cooling System™ (industry exclusive):
 - Exterior-mounted 15,000 BTU "Whisper Quiet" A/C unit
 - Jayco exclusive insulated dual duct design
 - Directional and closeable A/C vents
 - Larger return air vents with user accessible filters
 - JaySMART™ (Safety Markers And Reverse Travel) LED lighting (patented)
 - Painted fiberglass front cap with built-in specialty LED lighting
 - Custom automotive-grade vinyl exterior graphics package
 - LED exterior lighting package
 - Detachable shore power cord
 - Dual 30 lb. propane bottles with auto regulator
 - Pass-through storage with Slam-latch™ baggage doors
 - Digital TV antenna with Wi-Fi prep
 - Dual channel exterior marine-grade speaker
 - Fully enclosed, LED-lighted universal docking center:
 - Selectable water connections
 - Quick-connect outside shower
 - Black tank flush, winterization, and sanitization
 - Independent satellite and whole coach cable hookups
 - Water heater bypass
 - Battery disconnect
 - Under-mounted spare tire (Goodyear® Endurance®- made in the USA)
 - LP quick-connect
 - Slide topper/awning prep
 - "Industry's BEST" outside kitchen (select models)
- LUXURY PACKAGE (MANDATORY)**
- JAYCOMMAND® "Smart RV" system (Pro tablet)
 - Electric stabilizer jacks (front and rear)
 - LED fireplace with electric space heater
 - 10 cu.ft. 12v refrigerator
 - Blackout roller shades
 - Residential style glass shower doors
 - Tire Pressure Monitoring System (TPMS)
 - Washer/dryer prep (select models)

- STANDARD INTERIOR EQUIPMENT**
- Solid hardwood slide fascia
 - Handcrafted and glazed doors, drawers, and trim
 - Heavy-duty, 75 lb., full-extension, steel ball-bearing drawer guides
 - 5/8 in. tongue-and-groove joined plywood floor decking
 - Residential vinyl flooring (made in the USA)
 - Residential vinyl flooring in slideouts (no carpet)
 - LED dimmer switches (multiple locations)
 - Tri-fold hide-a-bed sofa with residential sleep surface (select models)
 - Theater seating (select models)
 - Stainless steel kitchen sink
 - Matte black kitchen faucet with pull-out sprayer
 - Dual USB charging ports (multiple locations)
 - Extra 120V power outlets in kitchen and slide rooms (where applicable)
 - Residential quilted bedspread and pillows
 - Gas-strutted under-bed storage
 - Inverter pre-wire (multiple locations)
 - C.P.A.P. prepped bedroom
 - Carbon monoxide and LP detector
 - Bathroom skylight
 - LED backlit medicine cabinet with custom framed mirror
 - Bathroom tile backsplash
 - Blue LED nightlights in bathrooms
 - Porcelain foot flush toilet
- CUSTOMER VALUE PACKAGE (MANDATORY)**
- MORryde® StepAbove™ entrance steps (main entrance) with blue LED light
 - 15,000 BTU "Whisper Quiet" A/C
 - 50-amp service with dual A/C ducts and second A/C prep
 - Electric patio awning with integrated dimmable LED lights
 - 60K tankless water heater
 - Custom machined aluminum rims
 - Rear 2 in. accessories receiver
 - Keyed-Alike™ lock system (single key for all doors/locks)
 - Rooftop and ground solar prep by Go Power!®
 - Security monitor prep- observation camera prep (rear, sides & entrance door)
 - Hidden hinges on cabinet doors
 - Upgraded friction hinge entrance door with XL grab handle
 - LED Smart HDTV with fully digital HDMI® output
 - 12V A/V system with Bluetooth® and HDMI®
 - Stainless steel range with glass cover
 - Stainless steel 30 in. over-the-range microwave
 - Residential queen (60 in. x 80 in.) mattress with under-bed storage
 - Rain-proof bathroom power vent
- 4 STAR HANDLING PACKAGE (MANDATORY)**
- Goodyear® Endurance® tires (made in the USA, load range 'E')
 - Dexter® Axles with Nev-R-Adjust® brakes and E-Z Lube® hubs
 - MORryde® CRE-3000™ rubberized suspension
 - Wet bolt fasteners, bronze bushings

Optional Equipment

OPTIONAL EQUIPMENT INSTALLED ON THIS VEHICLE BY MANUFACTURER

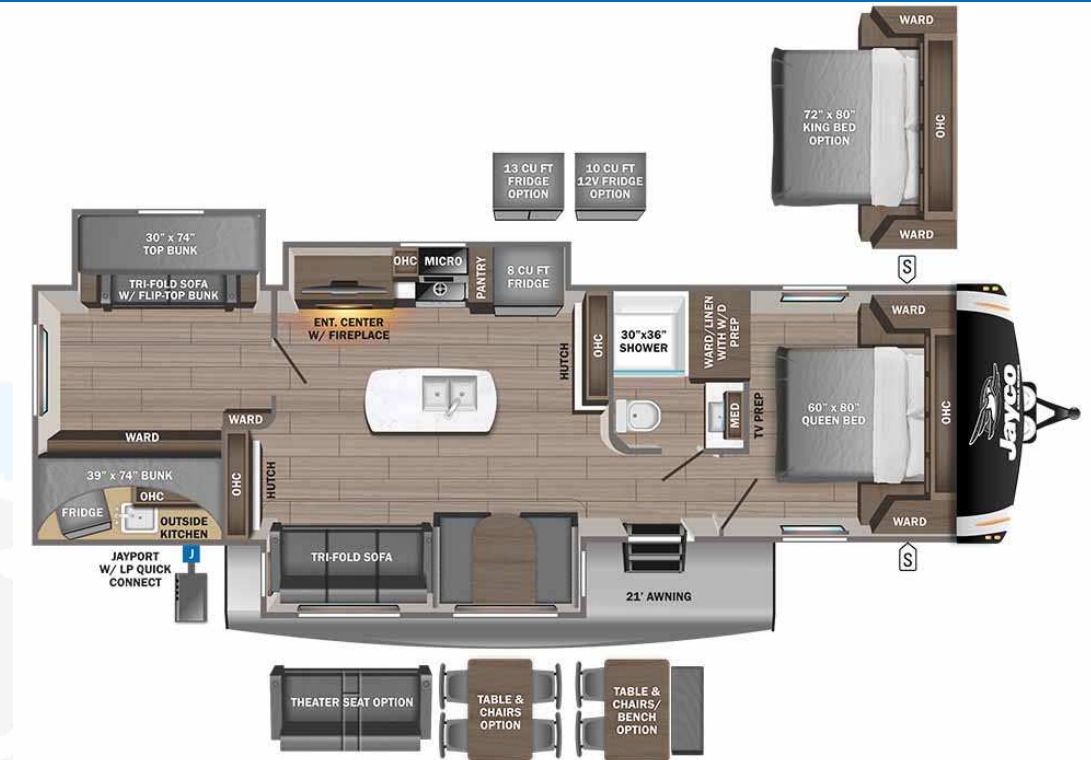
Base price	65,175.00
Modern Farmhouse	n/c
USA Standards	n/c
Customer Value Package	6,263.00
Luxury Package	7,493.00
Four Star Handling Package	n/c
Solar Prep	n/c
Bedroom AC Prep	n/c
10 Cu.Ft. 12v Refrigerator	n/c
Standard Camping System	n/c
Observation System Prep	n/c
Tinted Safety Glass	n/c
Windows	n/c
Electric Stabilizer	n/c
Jacks (2 sets)	n/c
Roof Ladder (Std)	n/c
Dinette	n/c
Theater Seating Sofa	225.00
Queen Bed	n/c

UNIT TOTAL **79,156.00**

DEALER INSTALLED OPTIONS

Manufacturer's Suggested Retail Price \$79,156.00

TOTAL AMOUNT DOES NOT INCLUDE STATE AND LOCAL TAXES OR LICENSE FEES. THE PRICE SHOWN ABOVE MAY OR MAY NOT BE REPRESENTATIVE OF THE ACTUAL SELLING PRICE OF SIMILAR RECREATIONAL VEHICLES IN YOUR AREA.



lb **UVW** 9818 lbs **Sleeps** **Length** 38' 8.5"

DIMENSIONS

Exterior height:.....140.50"
 Exterior width:.....96.50"
WEIGHTS
 GVWR:.....11400
 GAWR (front):.....5800
 GAWR (rear):.....5800
 Approx. Gross Cargo Carrying Capacity (GCCC):.....1582

TIRES

Tire size (front):.....ST235/85R16E
 Tire size (mid):.....
 Tire size (rear):.....ST235/85R16E
 Tire size (spare):.....ST235/85R16E

CAPACITIES

Fresh water tank (gals.):...81.00
 Gray water tank (gals.):...74.00
 Black water/toilet tank (gals.):.....37.00
 Propane (lbs.):.....60
 Propane (gals.):.....14
 Water heater (gals.):.....0.19

SEATING & SLEEPING

Some dimensions may be rounded and may vary from the actual dimensions
 Weights may be estimated calculations and may vary from the actual weight - refer to the vehicle weight labels for actual weights
 Floorplans, features and specifications are subject to change without notice.

