



RECREATIONAL
VEHICLES

CONNECT

LIGHTWEIGHT TRAVEL TRAILERS



The KZ **True 2 Warranty** is a **2-year hitch-to-bumper limited warranty** that's true to its name. The gold standard in RV protection, True 2 provides double the coverage of the industry norm. Plus, our warranty is backed by the craftsmanship and quality we're known for, so you can Go. Camp. Live. Wherever your adventure takes you, know that you're covered in your KZ.



2021 CONNECT TRAVEL TRAILERS

C272FK | Shale décor



2021 DÉCOR

ASHWOOD

SHALE

| Connect Travel Trailers | C231RK | C241RLK | C251BHK | C261RB | C261RKK | C261RL | C272FK | C291BHK | C292RDK | C302RIK | C313MK | C313RL | C322BHK | C323RK | C332BHK |
|------------------------------------|--------|---------|---------|--------|---------|--------|---------|---------|---------|---------|---------|---------|---------|--------|---------|
| UVW (Unloaded Vehicle Weight)* | 5,650 | 5,790 | 5,820 | 6,110 | 6,180 | 6,050 | 6,590 | 6,750 | 7,250 | 7,450 | 7,970 | 7,860 | 7,880 | 8,410 | 7,790 |
| Dry Hitch Weight* | 670 | 610 | 750 | 720 | 650 | 720 | 880 | 780 | 750 | 890 | 992 | 840 | 860 | 1,020 | 980 |
| Dry Axle Weight* | 4,980 | 5,180 | 5,070 | 5,390 | 5,530 | 5,330 | 5,710 | 5,970 | 6,500 | 6,560 | 6,978 | 7,020 | 7,020 | 7,390 | 6,810 |
| CCC (Cargo Carrying Capacity) | 1,615 | 1,475 | 1,555 | 1,235 | 1,160 | 1,305 | 2,650 | 2,445 | 1,925 | 1,805 | 1,822 | 1,790 | 1,680 | 1,390 | 1,990 |
| GVWR | 7,265 | 7,265 | 7,375 | 7,345 | 7,340 | 7,355 | 8,800 | 8,800 | 9,175 | 9,255 | 9,792 | 9,650 | 9,560 | 9,800 | 9,780 |
| Interior Height | 82" | 82" | 82" | 82" | 82" | 82" | 82" | 82" | 82" | 82" | 82" | 82" | 82" | 82" | 82" |
| Exterior Height w/ A/C | 11' 6" | 11' 6" | 11' 6" | 11' 4" | 11' 4" | 11' 4" | 11' 4" | 11' 4" | 11' 4" | 11' 6" | 11' 6" | 11' 6" | 11' 6" | 11' 6" | 11' 6" |
| Exterior Width | 96" | 96" | 96" | 96" | 96" | 96" | 96" | 96" | 96" | 96" | 96" | 96" | 96" | 96" | 96" |
| Exterior Length** | 28' 6" | 29' 5" | 29' 10" | 30' 8" | 31' 3" | 31' 3" | 30' 11" | 34' 4" | 32' 3" | 34' 4" | 35' 11" | 36' 11" | 37' 10" | 38' 5" | 37' 6" |
| Refrigerator (cu. feet) | 8 | 8 | 8 | 8 | 8 | 8 | 8 | 8 | 8 | 8 | 8 | 8 | 8 | 8 | 8 |
| Water Heater Cap. (gal. G/E w/DSI) | 6 | 6 | 6 | 6 | 6 | 6 | 6 | 6 | 6 | 6 | 6 | 6 | 6 | 6 | 6 |
| Fresh Water Cap. (gal.) | 45 | 45 | 45 | 45 | 45 | 45 | 45 | 45 | 45 | 45 | 45 | 45 | 45 | 45 | 45 |
| Waste Water Cap. (gal.) | 32 | 32 | 32 | 32 | 32 | 32 | 32 | 32 | 32 | 32 | 32 | 32 | 64 | 32 | 64 |
| Gray Water Cap. (gal.) | 64 | 32 | 64 | 64 | 64 | 32 | 64 | 64 | 64 | 64 | 32 | 32 | 32 | 64 | 32 |
| LP Gas Cap. (lbs.) | 40 | 40 | 40 | 40 | 40 | 40 | 40 | 40 | 40 | 40 | 40 | 40 | 40 | 40 | 40 |
| Furnace BTUs (1,000s) | 30 | 30 | 30 | 30 | 30 | 30 | 30 | 30 | 30 | 30 | 30 | 30 | 30 | 30 | 30 |
| Tire Size | 14" | 14" | 14" | 14" | 14" | 14" | 15" | 15" | 15" | 15" | 15" | 15" | 15" | 15" | 15" |
| Awning | 19' | 18' | 18' | 19' | 16' | 20' | 18' | 18' | 20' | 20' | 13'/11' | 15' | 10'/11' | 15' | 18' |

*This weight reflects the rolling average unit weight for each model. Your trailer weight will vary according to optional equipment.

**Exterior length is measured from rear of bumper to leading edge of coupler.

2021 CONNECT SE TRAVEL TRAILERS

C241BHKSE | Ashwood décor (shown w/OPT TV)



2021 DÉCOR

ASHWOOD

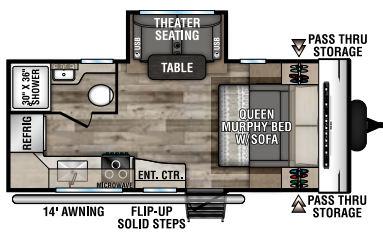
SHALE

| Connect SE Travel Trailers | C191MBSE | C210MBKSE | C211MKSE | C221FKKSE | C221RBSE | C231BHKSE | C241BHKSE | C271BHKSE | C281BHKSE | C281RDKSE | C281RLSE | C312BHKSE | C321BHKSE |
|------------------------------------|----------|-----------|----------|-----------|----------|-----------|-----------|-----------|-----------|-----------|----------|-----------|-----------|
| UVW (Unloaded Vehicle Weight)* | 4,580 | 4,520 | 4,980 | 5,350 | 5,230 | 5,380 | 5,490 | 5,900 | 6,390 | 6,080 | 6,170 | 7,260 | 7,210 |
| Dry Hitch Weight* | 510 | 490 | 540 | 870 | 640 | 710 | 660 | 810 | 1,030 | 650 | 781 | 660 | 1,000 |
| Dry Axle Weight* | 4,070 | 4,030 | 4,440 | 4,480 | 4,590 | 4,670 | 4,860 | 5,090 | 5,360 | 5,430 | 5,389 | 6,600 | 6,210 |
| CCC (Cargo Carrying Capacity) | 1,920 | 1,980 | 1,520 | 1,650 | 2,090 | 1,975 | 1,810 | 1,600 | 1,610 | 1,920 | 1,830 | 2,200 | 1,790 |
| GVWR | 6,500 | 6,500 | 6,500 | 7,000 | 7,320 | 7,355 | 7,330 | 7,500 | 8,000 | 8,000 | 8,000 | 9,460 | 9,000 |
| Interior Height | 78" | 78" | 78" | 78" | 78" | 78" | 78" | 78" | 78" | 78" | 78" | 78" | 78" |
| Exterior Height w/ A/C | 10' 10" | 10' 10" | 10' 10" | 10' 10" | 10' 10" | 10' 10" | 10' 10" | 10' 10" | 10' 10" | 10' 10" | 10' 10" | 11' 2" | 11' 2" |
| Exterior Width | 96" | 96" | 96" | 96" | 96" | 96" | 96" | 96" | 96" | 96" | 96" | 96" | 96" |
| Exterior Length** | 22' 5" | 24' 11" | 25' 11" | 26' 7" | 26' 11" | 27' 9" | 29' 6" | 31' 11" | 33' 11" | 32' 11" | 32' 5" | 36' 9" | 36' 11" |
| Refrigerator (cu. feet) | 10 | 10 | 10 | 10 | 10 | 10 | 10 | 10 | 10 | 10 | 10 | 10 | 10 |
| Water Heater Cap. (gal. G/E w/DSI) | 6 | 6 | 6 | 6 | 6 | 6 | 6 | 6 | 6 | 6 | 6 | 6 | 6 |
| Fresh Water Cap. (gal.) | 45 | 45 | 45 | 45 | 45 | 45 | 45 | 45 | 45 | 45 | 45 | 45 | 45 |
| Waste Water Cap. (gal.) | 32 | 32 | 32 | 32 | 32 | 32 | 32 | 32 | 32 | 32 | 32 | 32 | 64 |
| Gray Water Cap. (gal.) | 32 | 32 | 32 | 64 | 64 | 32 | 32 | 64 | 32 | 64 | 32 | 32 | 32 |
| LP Gas Cap. (lbs.) | 40 | 40 | 40 | 40 | 40 | 40 | 40 | 40 | 40 | 40 | 40 | 40 | 40 |
| Furnace BTUs (1,000s) | 30 | 30 | 30 | 30 | 30 | 30 | 30 | 30 | 30 | 30 | 30 | 30 | 30 |
| Tire Size | 14" | 14" | 14" | 14" | 14" | 14" | 14" | 14" | 15" | 15" | 15" | 15" | 15" |
| Awning | 14' | 15' | 18' | 18' | 16' | 19' | 18' | 20' | 20' | 20' | 20' | 18' | 20' |

*This weight reflects the rolling average unit weight for each model. Your trailer weight will vary according to optional equipment.

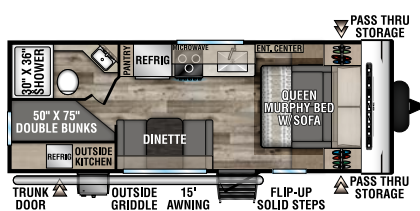
**Exterior length is measured from rear of bumper to leading edge of coupler.

2021 CONNECT SE FLOORPLANS



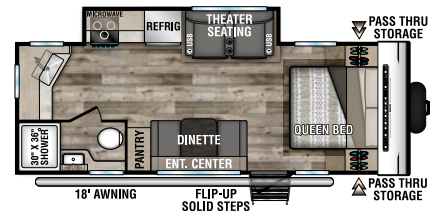
C191MBSE

UVW - 4,580 | Exterior Length - 22' 5" | Sleeps 2



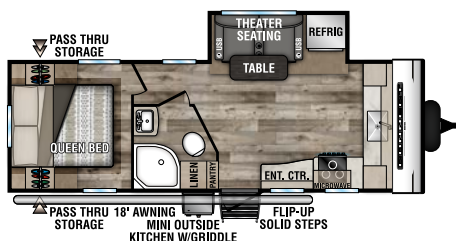
C210MBKSE

UVW - 4,520 | Exterior Length - 24' 11" | Sleeps TBD



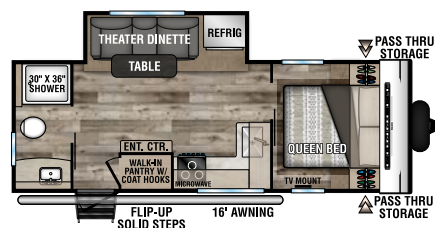
C211MKSE

UVW - 4,980 | Exterior Length - 25' 11" | Sleeps 3



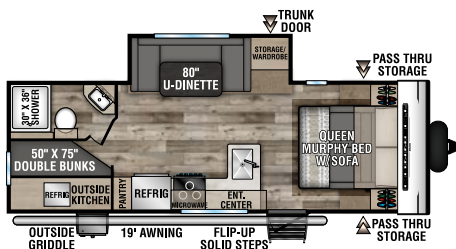
C221FKKSE

UVW - 5,350 | Exterior Length - 26' 7" | Sleeps 2



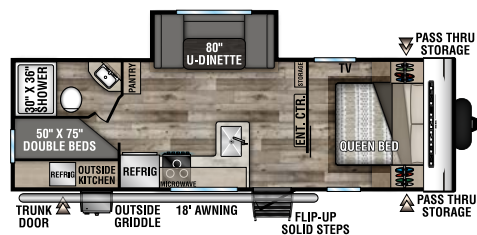
C221RBSE

UVW - 5,230 | Exterior Length - 26' 11" | Sleeps 3



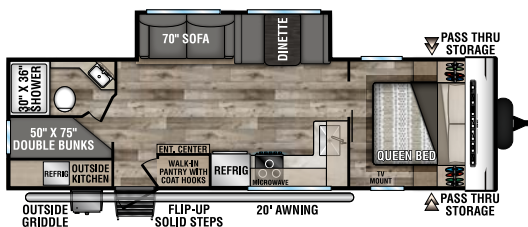
C231BHKSE

UVW - 5,380 | Exterior Length - 27' 9" | Sleeps 8



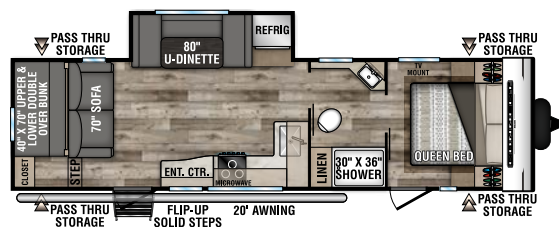
C241BHKSE

UVW - 5,490 | Exterior Length - 29' 6" | Sleeps 8



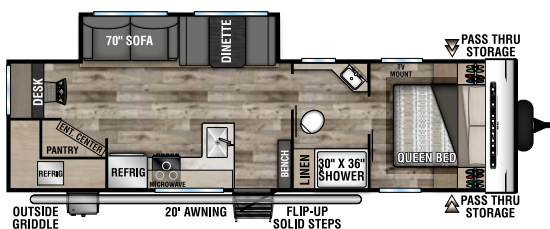
C271BHKSE

UVW - 5,900 | Exterior Length - 31' 11" | Sleeps 8



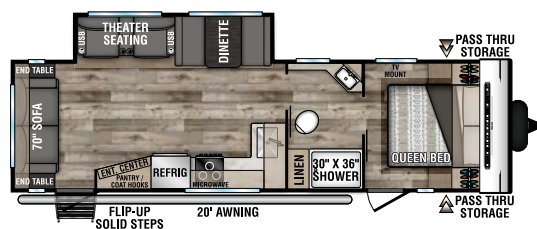
C281BHSE

UVW - 6,390 | Exterior Length - 33' 11" | Sleeps 8



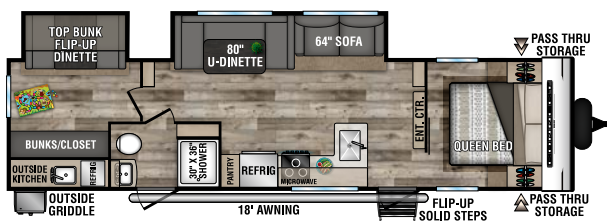
C281RDKSE

UVW - 6,080 | Exterior Length - 32' 11" | Sleeps 5



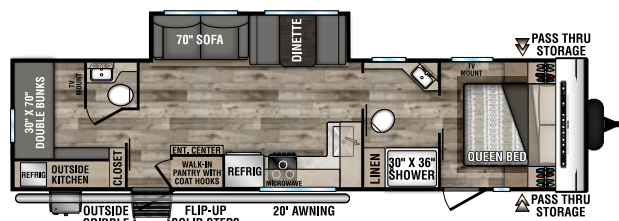
C281RLSE

UVW - 6,170 | Exterior Length - 32' 5" | Sleeps 4



C312BHKSE

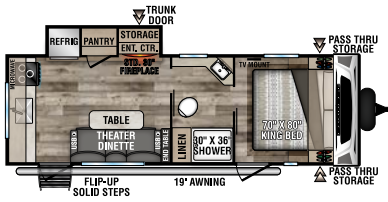
UVW - 7,260 | Exterior Length - 36' 9" | Sleeps 8



C321BHKSE

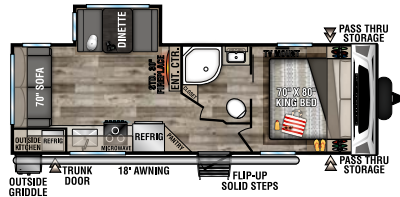
UVW - 7,210 | Exterior Length - 36' 11" | Sleeps 7

2021 CONNECT FLOORPLANS



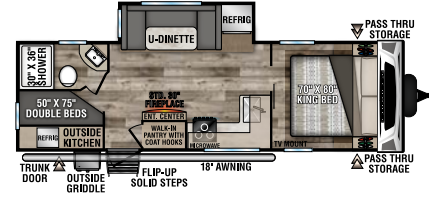
C231RK

UVW - 5,650 | Exterior Length - 28' 6" | Sleeps 3



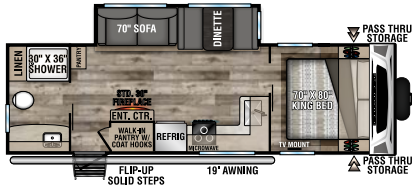
C241RLK

UVW - 5,790 | Exterior Length - 29' 5" | Sleep 5



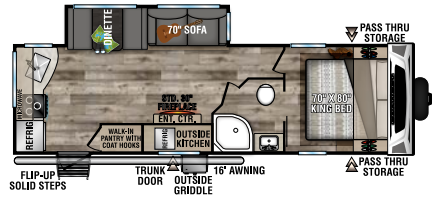
C251BHK

UVW - 5,820 | Exterior Length - 29' 10" | Sleeps 7



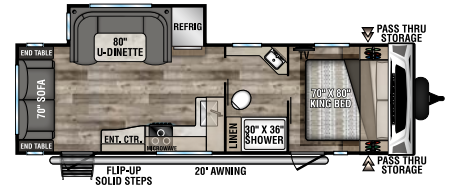
C261RB

UVW - 6,110 | Exterior Length - 30' 8" | Sleeps 5



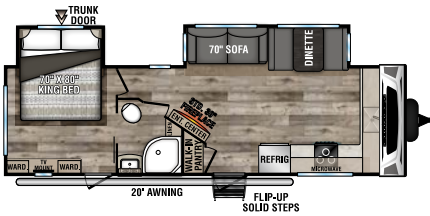
C261RKK

UVW - 6,180 | Exterior Length - 31' 3" | Sleeps 5



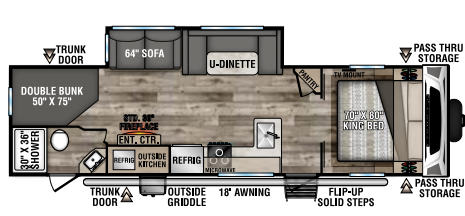
C261RL

UVW - 6,050 | Exterior Length - 31' 3" | Sleeps 6



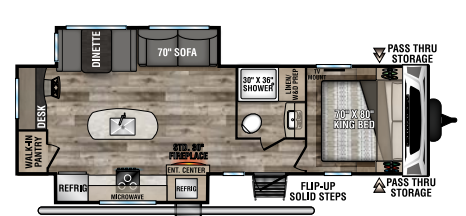
C272FK

UVW - 6,590 | Exterior Length - 30' 11" | Sleeps 5



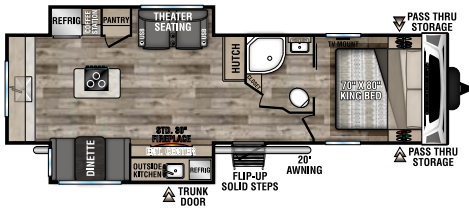
C291BHK

UVW - 6,750 | Exterior Length - 34' 4" | Sleeps 10



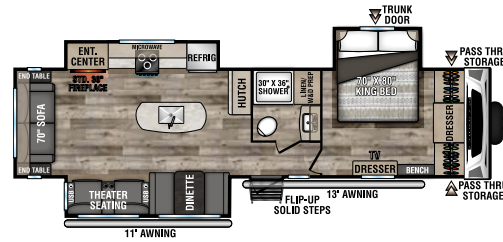
C292RDK

UVW - 7,250 | Exterior Length - 32' 3" | Sleeps 5



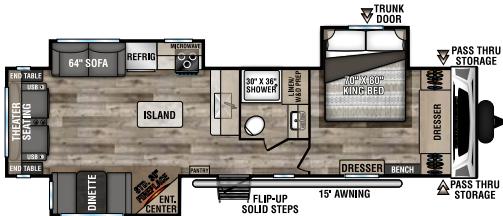
C302RIK

UVW - 7,450 | Exterior Length - 34' 4" | Sleeps 4



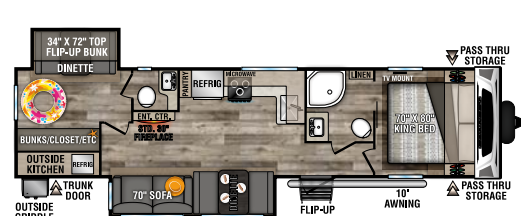
C313MK

UVW - 7,970 | Exterior Length - 35' 11" | Sleep 3



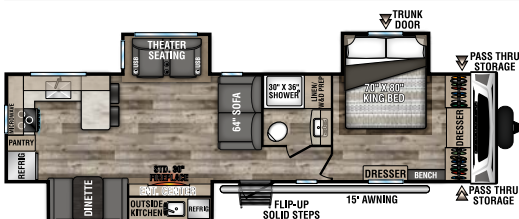
C313RL

UVW - 7,860 | Exterior Length - 36' 11" | Sleeps 5



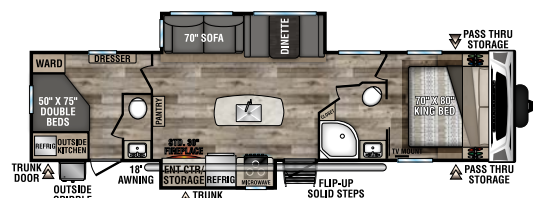
C322BHK

UVW - 7,880 | Exterior Length - 37' 10" | Sleeps 9



C323RK

UVW - 8,410 | Exterior Length - 38' 5" | Sleeps 5



C332BHK

UVW - 7,790 | Exterior Length - 37' 6" | Sleeps 9

2021 CONNECT & CONNECT SE FEATURES & OPTIONS



LUXURY EDITION (opt) includes solid surface countertops, 5.1 stabilizing system, frameless windows, painted front cap, and roller shades (Connect only).



SE'S OPTIONAL FRONT WINDOW offers not only a more modern and attractive design, but appreciable more natural light inside.



ALUMINUM WHEELS and nitrogen-filled radial tires are standard.



KZ ENGAGE PACKAGE: powered by One Control. One Control monitors the battery levels, controls the sliderooms, leveling system, awning(s), inside/outside lighting, and TPMS prep.



LIGHTED TONGUE JACK assists setup & teardown.



Added insulation so you can extend the camping season, with a fully enclosed, insulated and heated underbelly to protect tanks and pipes (R-9 sidewalls, R-20 roof, and R-24 floor).



5/8" TONGUE & GROOVE PLYWOOD



THEATER SEATING with cupholders, USB plug, heat and massage



21-Inch **STAINLESS STEEL RANGE** with illuminated control knobs.



SEAMLESS COUNTERTOPS with deep under-mount stainless steel kitchen sink, sink cover for added countertop space, and stainless steel high-rise faucet.

Dealer:

RVIA

KZ RECREATIONAL VEHICLES

985 N 900 W SHIPSEWANA, IN 46565

E: KZ@KZ-RV.COM

WWW.KZ-RV.COM

Due to continual research and advances, manufacturer reserves the right to change specifications, design, price and equipment without notice, and assumes no responsibility for any error in this literature. Some items shown are not included as standard or optional equipment.

©2020KZ | 11/18/20 | 40M