



**SUMMIT**

**Once You Pull a Merhow. You Won't Pull Anything Else.**



## Trailer Standard Features

- Aluminum sidewall posts, top rail, rear hoop, bottom rail.
- Dexter EZ-Lube torsion axles.
- Collapsible rear tack with tie-back.
- 40" Stall setting (Measured center of hinge pins)
- Electric brakes on all wheels.
- Ply-Felt on rear road side door & road side wall of rear tack.
- 4" Cross members, typically on 14" centers.
- Aluminum wheels standard. (Excludes the spare wheel/tire)
- (1) Saddle rack and saddle rack location. (in rear tack)
- Extruded aluminum floor below LQ and horse area.
- Spare steel wheel and tire standard.
- (1) Fixed mount carpeted aluminum saddle seat per stall.
- One piece aluminum roof.
- Drive on trailer tire changing assistant.
- Swing out blanket bar with (1) arm per stall. (Installed on rear rad side door)
- White, .040 exterior aluminum skin. (Optional color upgrades)
- Lockable aluminum battery box.
- (1) Aluminum brush box installed on rear road side door in tack.
- Stainless steel nose wrap.
- Full height, 60/40 doors at rear of trailer.
- Extruded aluminum sides in horse area. (Optional full slat)
- Feed bag rings standard in front stall.
- Window with bar guard on rear curb side door.
- Horse area walls lined with white aluminum (UP HIGH).
- Rubber Bumper under both rear doors.
- Wrap-around hinges on rear doors with a hold back per door.
- Lined and insulated horse area ceiling with white aluminum.
- Drip rail above rear doors.
- Lower section of horse area walls lined with ballistic liner.
- Hide-a-screen, retractable screen at the living quarters door.
- Models with 6' slide-out contain (2) end windows, (1) Picture window and a slide-out awning.
- .100 Aluminum kick plate on butt wall behind ballistic liner sheet.
- Flip up camper step standard at camper door.
- Drop down feed windows standard on all head windows.
- Walk thru door between LQ and horse area.
- Models with 9' slide-out contain (1) end window, (1) Picture window and a slide-out awning.
- Radius corner window with bar guard on hip side (1) per stall.
- (2) interior & (2) exterior horse ties standard per horse stall.
- Rubber mats in horse area and rear tack.
- (1) 2 Way roof vent per horse stall.
- Models with 12' slide-out contain (2) end windows, (2) Picture windows and a slide-out awning.
- Padded dividers with air flow shoulder sections.
- Lower divider on the first stall divider.
- Aluminum chest and butt bars with padded covers.
- (1) set of 8 heavy duty bridle hooks. (Installed on rear tack sidewall)
- Bauer cam bar locks on all cam bars and paddle latches.
- Tapered inside wheel wells (8 wide models only)
- (1) 12V light between adjoining manger doors in mangers.
- LED clearance lights (including upper and lower)
- 18" Deep mangers on all 8 wide models. Includes (1) Skin colored manger door for each stall except front stall with escape door.
- (1) 12V load light. Installed over horse loading door.
- (2) Sets of LED stop/tail lights.
- (1) 12V load light. Installed over exterior horse area, road side.
- 7 Way bargeman cord for trailer lights.
- 8 Wide models w/ mangers have ply-felt lining on inside of mangers.
- (1) 12V load lights. Installed over exterior horse area, curb side.
- Aluminum hook to hold trailer Bargeman cord to road side gusset area.
- 3 Way stall light switches. (Rear hoop & near walk-thru door in bathroom)
- Break-away emergency brakes switch.
- Escape door with step standard on 3 horse & larger models.
- 2V Hitch hook-up light under gooseneck.
- Adjustable coupler with 2 5/16" ball receiver.
- Drop down feed windows standard on all escape doors.
- 12V Exterior patio light.
- Safety chains.
- Paddle latch on escape doors.
- (1) 12V Light in the rear tack. (switched with stall lights)
- 2 Year Living quarters warranty.
- Butterfly style latch standard on escape doors.
- All horse area lights are to be 12V high intensity LED lights.
- 8 Year structural warranty.

## Interior Standard Features

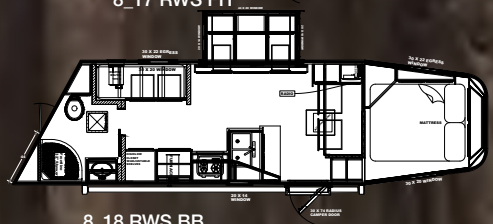
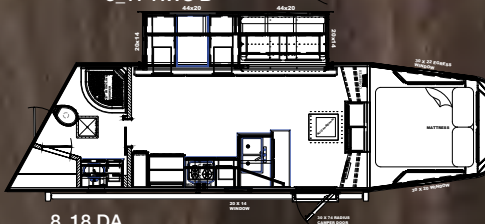
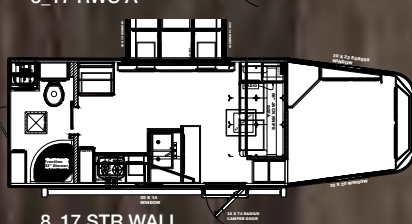
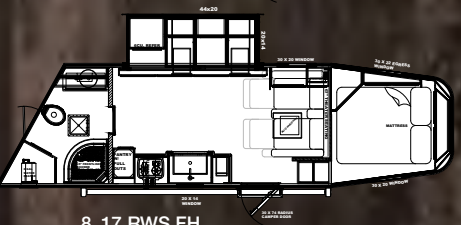
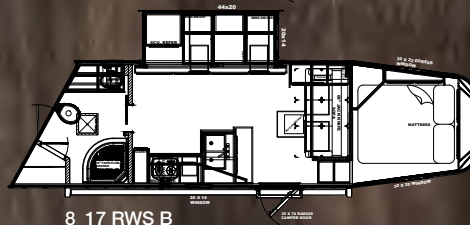
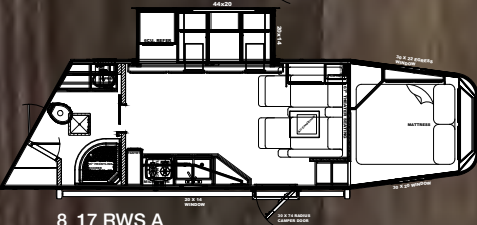
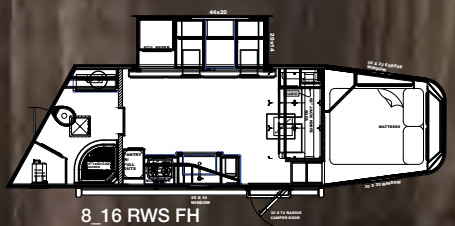
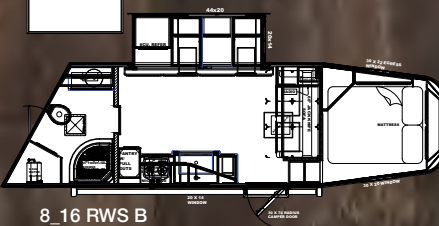
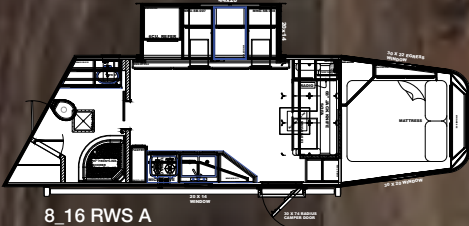
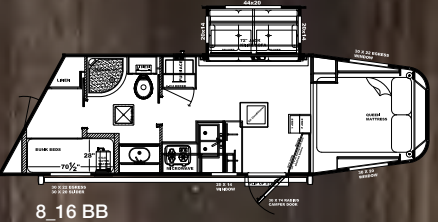
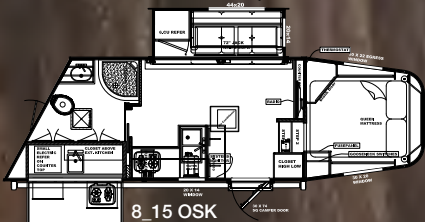
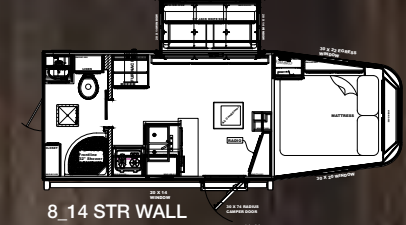
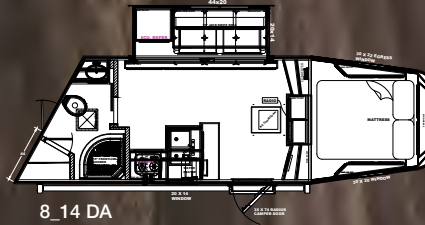
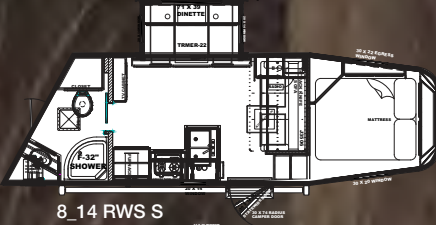
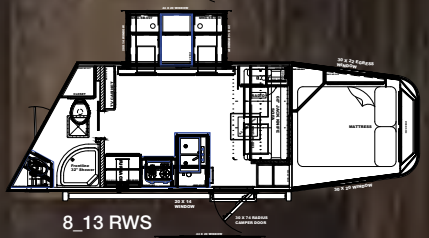
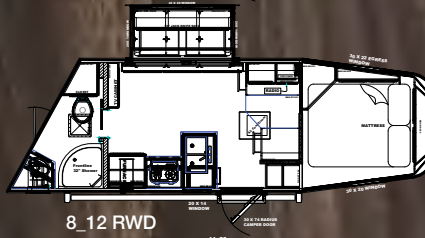
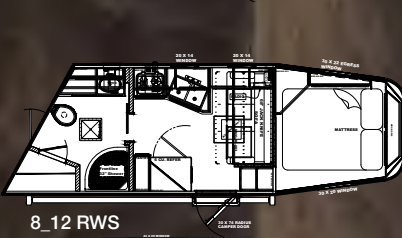
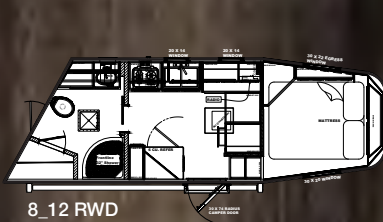
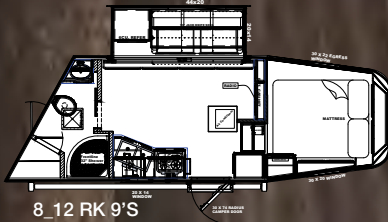
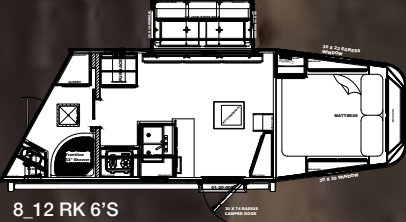
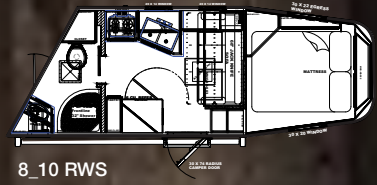
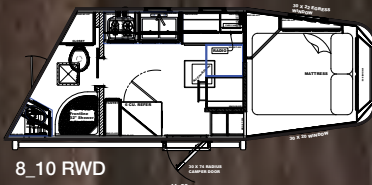
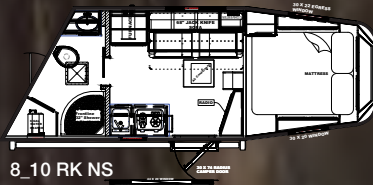
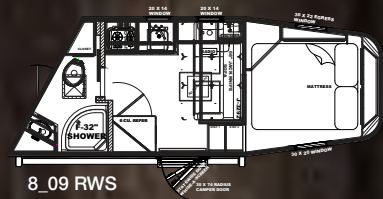
- Solid wood cabinets.
- Overhead cabinet above the seating area. (based on floor-plan).
- 12V light on bottom side of the kitchen overhead cabinet.
- Solid wood raised panel cabinet doors on 8' wide units.
- Single seating models standard with a sofa only and dual seating models standard with one sofa and one dinette.
- 12V USB charger near kitchen area.
- Solid wood flat panel cabinet doors on 7' wide units.
- 12V Under counter lights at kitchen and bathroom.
- European style cabinet door hinges.
- Deluxe queen mattress in front bunk. (60"X74")
- 120V outlet near kitchen and bathroom vanities.
- Crown molding in the main LQ, Kitchen and front bunk.
- Comforter with (2) pillow shams for the front bunk mattress.
- Built in microwave.
- Laminate counter-tops on 8' wide units with wood edges.
- Sconce lights at the head side of the bed.
- 3 cube or 6 cube refrigerator. (Based on floor plan.)
- Laminate counter-tops on 7' wide units with wood edges.
- 3 way switch for bunk ceiling lights.
- 2 burner, recessed cook-top with glass top.
- Solid wood, CNC window rings on 8' wide units.
- 12 volt USB charger toward the head side of the bunk. (Includes one on road and curb side.)
- 19,000 BTU, LP furnace.
- Picture frame style window rings on 7' wide units.
- 13,500 or 15,000 BTU air conditioner. (Based on floor plan.)
- Hardwood valance with fabric inlay. (8' wide units)
- White fiberglass one piece shower.
- Ducted air conditioning on all units.
- Fabric wrapped valance with solid wood ends (7' wide units)
- Opaque glass shower door.
- 6 Gallon direct spark ignition water heater.
- Pleated day/night only shades on all windows.
- Sky-dome above the shower.
- Dual 12V deep cycle batteries with battery cut-off switch.
- Linoleum floor in main LQ and bathroom.
- Towel bar and toilet paper holder in bathroom.
- Dual 20# LP tanks with regulator and switch over valve.
- Decorative panel ceiling. Soft-touch optional.
- Porcelain toilet with foot flush.
- Under belly fresh water tank. (38 gallons)
- Soft-touch walls with lower wainscot through out the LQ.
- High velocity vent fan with rain sensor in bathroom.
- Black and Gray water waste tanks. (35 gallons each)
- Soft touch and wainscot in slide-out.
- AM/FM/CD/DVD/Bluetooth radio.
- Smoke/CO/LP detectors.
- Soft-touch door panel on camper & walk-thru door.
- (2) Inside and (2) outside speakers.
- Fire extinguisher.
- Carpeted front bunk and step tops.
- TV antenna with booster.
- Outside water spigot.
- Stainless steel sink for kitchen.
- TV Prep locations per floor plan. (include 120V & coax for TV antenna)
- Sewer hose and holder under the front bunk.
- Stainless steel bathroom sink. (based on floor-plan).
- Exterior sidewall inlet connection for use with portable satellite.
- Low point drains for hot and cold water lines.
- All slide-out models standard with flush floor slide.
- Black electric awning. (Does NOT include auto retract feature.)
- Water heater by-pass valve
- Solid wood refrigerator front. (6 Cube refrigerators & larger)
- LED Light strip under the LQ Awning.
- 12 Volt water pump with on demand system.
- Drawers below the seating area. (When possible)
- (1) 120V exterior outlet near the camper door.
- 55 amp, 120 volt power distribution center.
- Drawers in the kitchen. (When possible)
- 12V lighted grab handle beside camper door.
- Removable shoreline cord.
- Ball bearing drawer slides with bulldog on each drawer.
- 12 Volt LED ceiling lights in the bunk, main LQ, and bathroom.
- 120V to 12V power converter.
- 12 Volt courtsey lights in main LQ and bathroom.
- 12V light on bottom side of the overhead cabinet @ seating area.
- 3rd Party certification. (TR Arnold)

*Although we do our best to ensure all standards are accurate, it is possible that there may be errors or standards may be altered due to how a specific trailer is quoted. Merhow does not accept responsibility for errors or alterations due to a specific unit.*



# Merhow Floor Plans

## Summit 8' Wide Living Quarters



# Rugged Aluminum Super Structure



Slated exterior at horse area

Insulated walls and ceiling w/soft touch wall panels

Merhow 8 Year Structural Warranty

Stall walls lined & insulated

Engineered for stabilized towing & Superior Construction

Gas shock assisted fold down step

Spare Tire Mount and Support



Extreme duty top rail

Living Quarters has 6 layers of Support: Frame, Linoleum, 1 1/4" Sub floor, I-Beams, Aluminum interlocking floor, 3/4" Tongue & groove deck

Aluminum frame & side walls, one piece roof, tubular roof bows & rear hoop

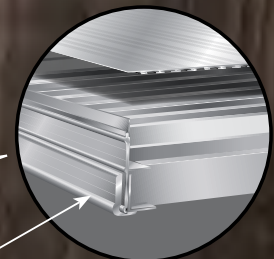
Location of waste tanks

Location of fresh water tank

Extruded Aluminum inter-locking floor w/bottom rails

4" I-Beams w/16" centers on average

Main frame is hucked together (staggered for maximum support.)



Add-a-rail added to longer units and units with a slide-out (based on model and length. Can be on one or both sides.)

DEALER

8 Year Structure Warranty and 2 Year Merhow LQ Warranty

Production information and photography are as accurate as possible at the time of production. Colors and finishes are photographic representations and may appear different when actually viewing materials and finishes. Some features shown are optional, prices and specifications are subject to change without notice.



Follow us on Social Media

Office - 269.483.0010  
FAX - 269.483.0030  
www.merhow.com