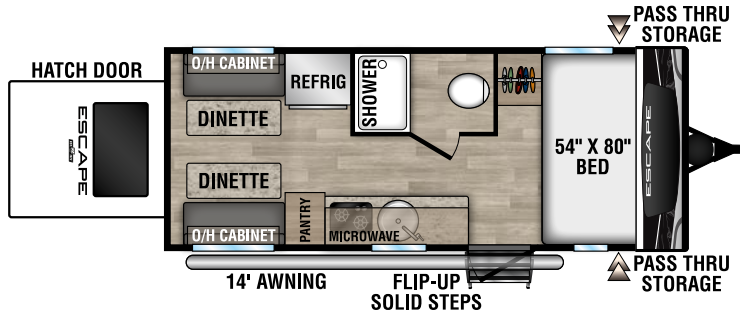




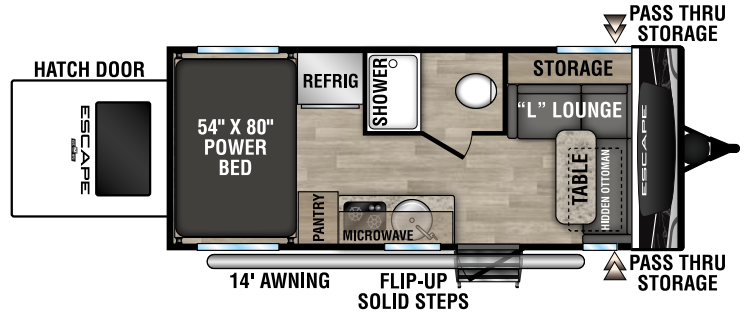
RECREATIONAL  
VEHICLES

# ESCAPE

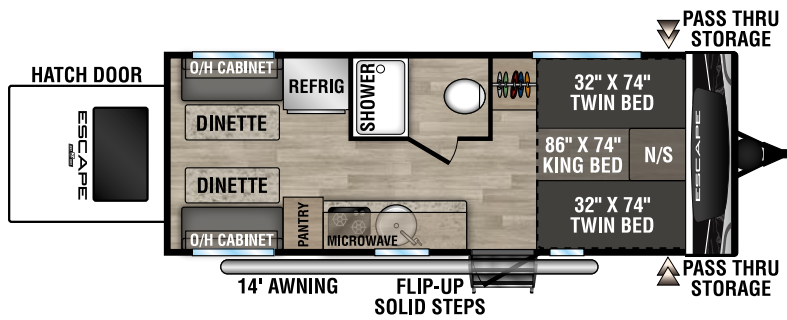
ULTRA LIGHTWEIGHT TRAVEL TRAILERS



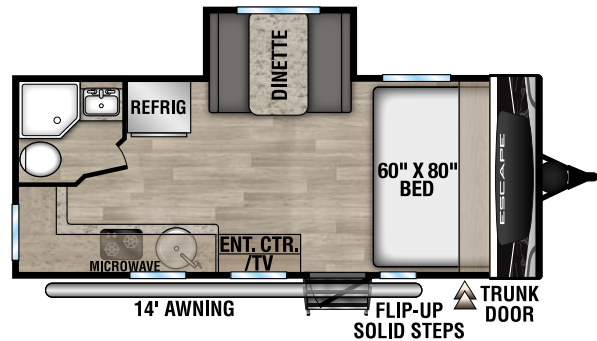
**E17 HATCH** UVW - 3,320 | Exterior Length - 22' | Sleeps - 4



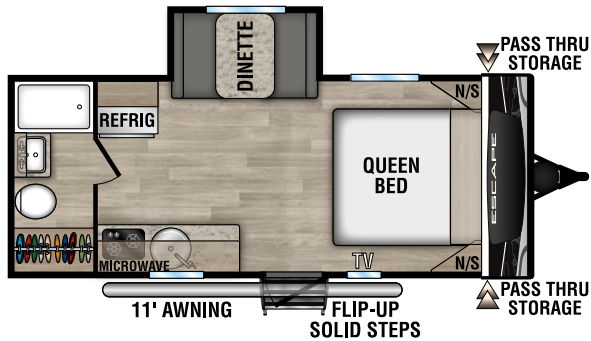
**E18 HATCH** UVW - 3,490 | Exterior Length - 22' | Sleeps - 4



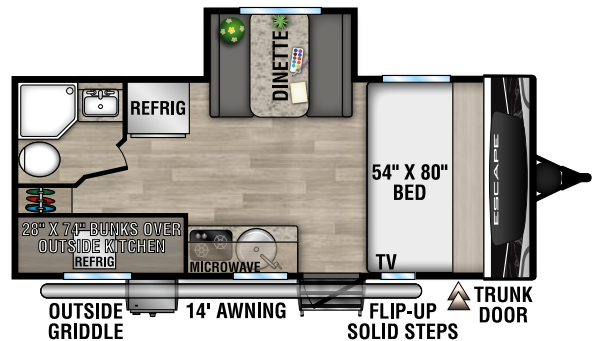
**E20 HATCH** UVW - 3,560 | Exterior Length - 23' 10" | Sleeps - 4



**NEW**  
**E181MK** UVW - 3,590 | Exterior Length - 22' 1" | Sleeps - 4

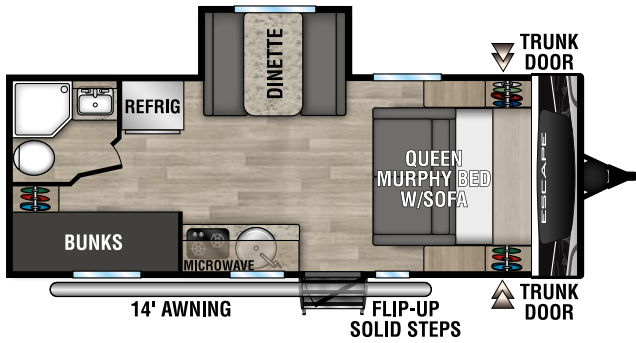


**E181RB** UVW - 3,500 | Exterior Length - 22' 1" | Sleeps - 3

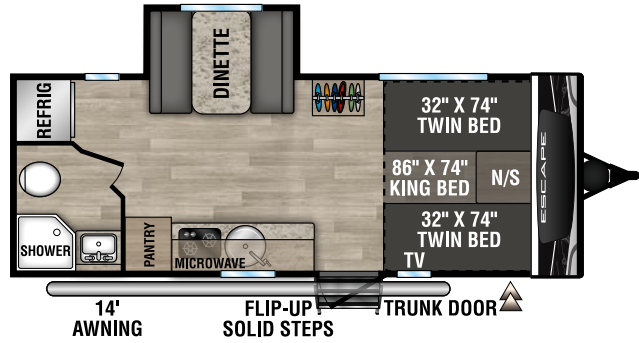


**E191BHK** UVW - 3,610 | Exterior Length - 22' 1" | Sleeps - 5

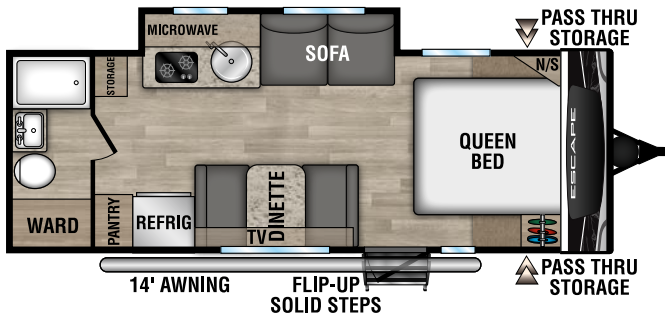
# 2023 ESCAPE



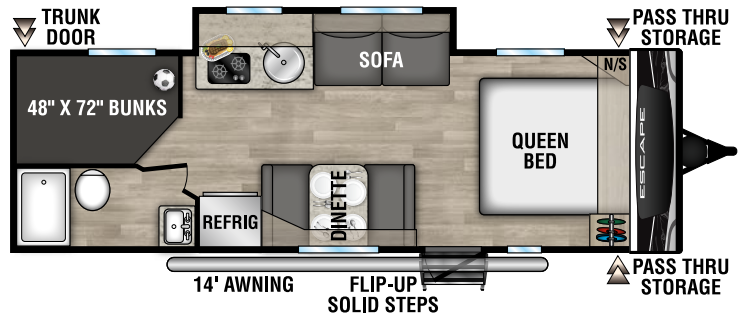
E201BH UVW - 3,780 | Exterior Length - 23' 9" | Sleeps - 5



E201TB UVW - 3,700 | Exterior Length - 23' 9" | Sleeps - 3



E211RB UVW - 4,000 | Exterior Length - 25' 2" | Sleeps - 4



E231BH UVW - 4,170 | Exterior Length - 27' 3" | Sleeps - 8

## OFF-GRID/OFF-ROAD PACKAGE

Our new Off-Grid/Off-Road Package allows complete boondocking capabilities, and includes a 100W roof-mounted solar panel, 1,000W inverter with dedicated 110V outlets, solar controller, tongue-mounted bike rack, griddle, aluminum wheels with mud tires, extra ground clearance, electronically-controlled heated holding tanks, double entry step and solar controller.



Escape