

TERRA<sup>®</sup> LX  
CLASS A GAS

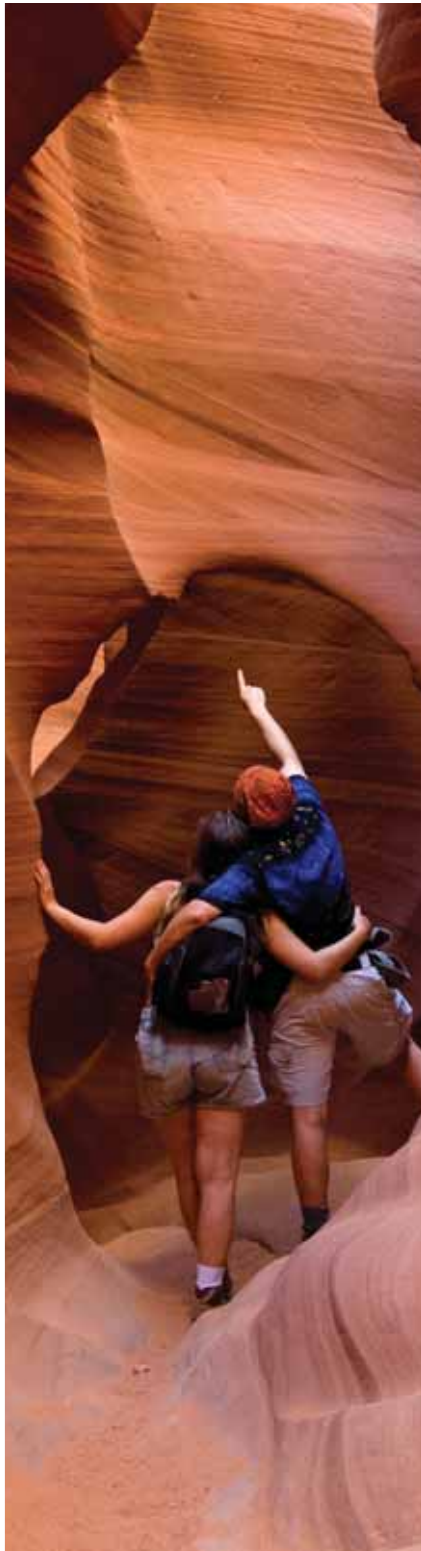
A TOY SO BIG, SHINY AND FUN,  
EVEN SANTA WOULD BE JEALOUS.



2008 Terra LX

FLEETWOOD<sup>®</sup>





# IT'S A TOY THE WHOLE FAMILY CAN PLAY WITH.

Imagine yourself, your friends and your family heading out for adventure in your Terra LX. It practically makes your heart skip a beat. Exceptionally beautiful both inside and out, you'll be proud to show it off wherever you go. Terra LX boasts the high-quality construction and upscale features usually found in coaches that sell for thousands more. If it's this fun to dream about, just think how much fun it would be to own.

## Quality



There's no cutting corners. Skilled craftsmen build every Fleetwood RV for maximum durability and longevity.



TERRA LX



The 24" Flat Panel TV is placed up front so the whole gang can watch. Better make some popcorn! A Samsung® 23" LCD HDTV is optional.



## Why Buy Terra LX?

The Sofa Bed feels so good after a long hike. At night, it becomes a convenient bed where you can recuperate for tomorrow's adventure. Add a dash more luxury by covering it with optional Ultraleather™





Terra LX 34G shown in Sage Mist interior décor with Windsor Birch wood cabinetry.

### Family-Friendly Design

There's lots of room inside for the whole gang to relax, a private bedroom suite for mom and dad, and a ton of storage outside.

### More for Your Money

Owning a Terra LX is a sure sign of a smart shopper with an eye for value. Competitors simply can't match its features and quality for the price.

### Comfy and Convenient

Each floor plan is carefully designed for comfortable, easy living. The fully equipped galley makes meals a breeze, and storage space is enormous.

### Built-In Safety Features

Dozens of safety features are built into Terra LX to provide peace of mind and protect your most precious cargo – your family.

### High-Quality Construction

We take great pride in our careful construction techniques, and the high quality of Terra LX shows in every detail.

### Fleetwood Reputation

With over 55 years in business, Fleetwood's reputation is second to none. We offer one of the most comprehensive warranties in the industry.





## WHEN ADVENTURE CALLS, YOUR FAMILY PICKS UP.

Maximize the good times with your family in your comfy Terra LX. It's been designed specifically for your needs. So whether you're into camping or tailgating, ATVs or jet skis, Terra LX is a perfect home base. It's got plenty of room, both inside and outside, to store your gear and supplies. And with a large towing capacity<sup>†</sup>, you can tow your boat, trailer, you name it. Yet there's still plenty of living space inside so everyone can spread out, thanks to the double slide-outs. That's the key to family harmony!

<sup>†</sup> Refer to footnote on the Weights and Measurements page for information.

### Trust



More people trust Fleetwood. After all, we've spent over 50 years perfecting RVs, earning the loyalty of generations of RVers.



TERRA LX



The Large Dinette is open for breakfast, lunch and dinner, seating four in front of the big picture window. At night, the kids can make it into another bed and grab some shut-eye.



The Refrigerator and Pantry store enough food for a hungry family. Behind raised panel doors, you'll find a Dometic® refrigerator and freezer with a whopping eight cubic feet of cooled space. The pantry is sure to be snack central.



The Convection Microwave Oven (optional) cooks fast like a standard microwave, but also bakes and broils like an oven. So you can celebrate birthdays on the road with homemade cake.



The Under-Sink Storage offers extra storage because we've designed the plumbing to take up minimal space, unlike many competitors. It's a great place to keep all your cleaning supplies in case your teenager wants to earn some allowance money. Or not.



Pots and Pans Drawer holds your tall and large cookware as well as cookbooks – everything but the kitchen sink!



The Galley puts everything within easy reach — like the range, microwave, sink, refrigerator and pantry. And while nobody enjoys doing dishes, it's more pleasant with a scenic view out the window above the stainless steel sink. Just flip up the countertop extension (select models) for more room to stack dishes.

## Passion



We're truly passionate about the RV lifestyle. Fleetwood was founded by RV enthusiasts, and that tradition continues today.





The Bedroom Suite features a queen-size innerspring mattress for cushiony comfort at bedtime, naptime or anytime. And unlike a hotel bed, it's yours and only yours.

## HOME SWEET TERRA LX.

At the end of a long day, you want to retire to your personal bed and bath. It's always waiting in Terra LX. These private spaces are designed for your comfort and convenience – things you appreciate even more away from home. For example, the kids will like the tub (34N model only), The spacious shower provides extra headroom with a light-filled skylight, and its water saver feature helps you dry camp for longer periods.

 TERRA LX



The Bathroom is clean, deluxe, and all yours. The hand-held showerhead rinses the campfire smoke out of your hair, and heat ducts keep the bathroom toasty warm. The medicine cabinet and sink vanity hold all your grooming supplies.



The Wardrobe holds a lot of clothes neatly, with storage for shoes too. And with the optional 20" flat screen TV or Samsung® 19" LCD HDTV, you can see what the weatherman says to wear. Looks like rain? Better get your thick socks out of the vanity drawer.

## INSTANT INTERIOR DECORATING. JUST MIX AND MATCH.

Pick the fabric palette you like best, and then select your wood finish. You've just decorated your Terra LX.

### Sage Mist

Living/Dining Room



Dinette Cushions

Sofa

Ultraleather™ Driver & Front Passenger Seats, Sofa (optional)

Bedroom



Bedspread & Headboard

Headboard & Pillow Shams

### Canyon

Living/Dining Room



Dinette Cushions

Sofa

Ultraleather™ Driver & Front Passenger Seats, Sofa (optional)

Bedroom



Bedspread & Headboard

Headboard & Pillow Shams

### Mocha Java

Living/Dining Room



Dinette Cushions

Sofa

Ultraleather™ Driver & Front Passenger Seats, Sofa (optional)

Bedroom



Bedspread & Headboard

Headboard & Pillow Shams

### Wood Finishes



Plantation Cherry



Windsor Birch

## WHATEVER COLOR YOU CHOOSE, OTHERS WILL BE GREEN WITH ENVY.

You're sure to draw some admiring glances in your new Terra LX, no matter what exterior color you select. The interior and exterior color palettes are not tied together, so you have the freedom to choose exactly what you like.

### Satin Steel



### White Shadow



### Mocha Java





## EXTERIOR FEATURES

- ① Full-Body Paint is typically found on coaches that cost much more. DuPont® paint is applied in a two-stage process for maximum durability and a striking, glossy finish.
- ② Patio Awning provides a shady spot for outdoor conversation.



Vehicle shown in Satin Steel exterior graphics.

- ③ Rear-Mounted Fuel Fill so you can pull into any space at the gas pump and fill up.
- ④ 4.0 KW Onan® MicroQuiet Generator runs quietly but provides plenty of power when you're dry camping. For even more power, upgrade to the optional 5.5 KW Onan® Generator.

## STOW, STOW, STOW YOUR STUFF.

Terra LX comes with three extra large storage compartments, so you can take what you need with you.



Pass-Through Storage lets you access your stuff from either side of the motor home (except 31M model).



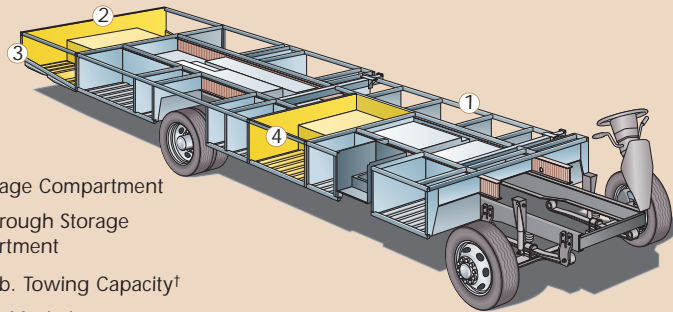
EZ Store moves in and out with the slide-out so you don't have to stoop to get your gear.



The Storage Maximizer is another great place for big items such as folding chairs or portable fire pits.

## THE POWER PLATFORM® PLUS BUILT FOR STRENGTH, STABILITY AND PASS-THROUGH STORAGE.

Competitors wish they had Fleetwoods patented Power Platform® Plus, the golden standard of chassis. Its impressive design provides strength and enormous storage space. Storage compartments are lined with molded plastic for easy cleaning, and lit to help you see after dark. The holding tanks are positioned in the bottom to enhance balance, and enclosed so they can be heated in cold weather to help prevent freezing.



- ① EZ Storage Compartment
- ② Pass-Through Storage Compartment
- ③ 5,000 lb. Towing Capacity†
- ④ Storage Maximizer

Drawings are for illustrative purposes only to highlight aspects of motor home construction. Actual motor home design depends on model and is subject to change.

† The chassis manufacturer recommends the installation of a supplemental brake control system to activate the brakes on the vehicle or trailer you are towing. Hitch receiver ratings expressed are maximum for the hitch receiver installed and may require the purchase of additional equipment that is dependent on the weight of the towed load. Consult with hitch receiver manufacturer for further information.

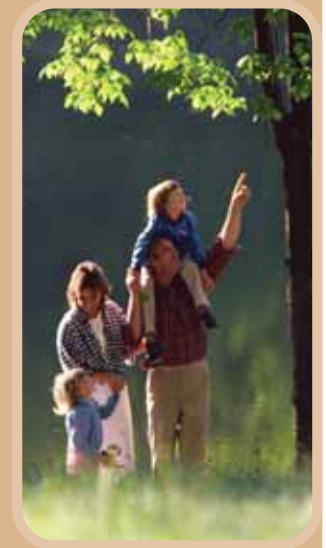
## PEACE OF MIND INCLUDED, STANDARD.

Fleetwood engineers have built dozens of safety features into Terra LX to keep your family safe. Of course, we've included 3-point seat belts for the driver and passenger, safety-belted seating locations inside for other passengers, and a child seat safety tether (depending on model). A few other notable safety features include hydraulic powered disc brakes and ABS on all four wheels, and leveling jacks that automatically retract if the drive gear is engaged.

### Safety



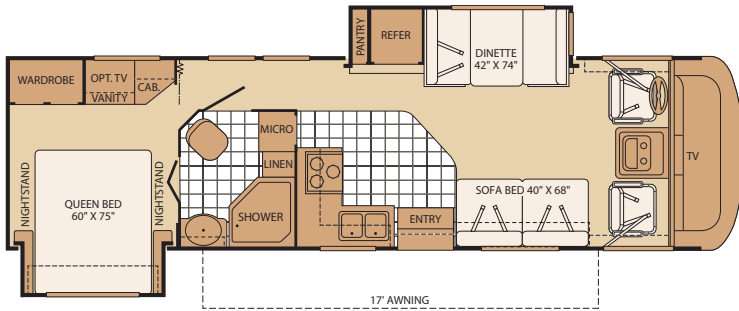
You've got precious cargo. So we've engineered dozens of innovative safety features into our motor homes to give you more peace of mind.



TERRA LX



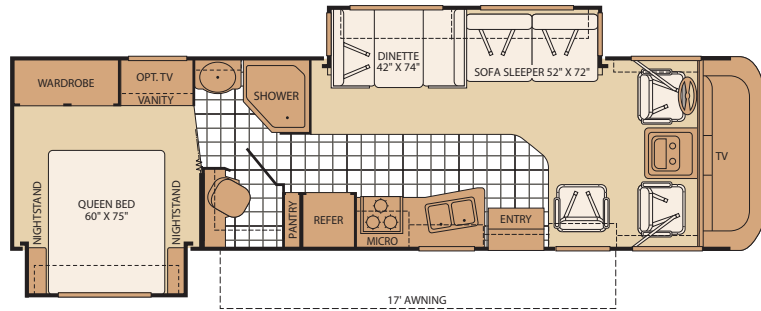
31M



Interior Storage Capacity: 137 cu. ft.  
Exterior Storage Capacity: 120 cu. ft.

- Spacious and inviting living room and galley
- Total privacy in the bedroom and huge bathroom thanks to the side-aisle layout

32K



Interior Storage Capacity: 140 cu. ft.  
Exterior Storage Capacity: 123 cu. ft.

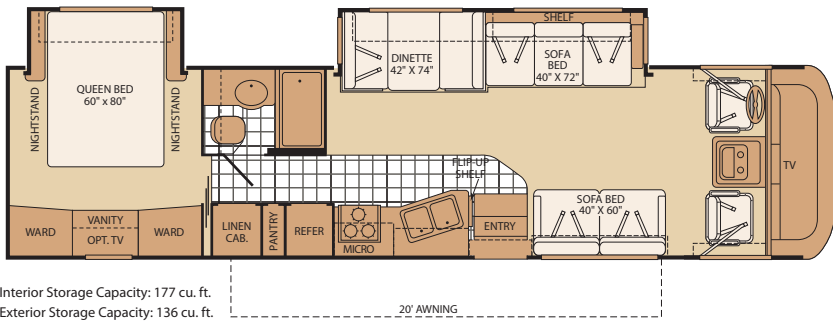
- The space of a much longer coach thanks to the large front slide-out
- Split-bath arrangement allows for maximum dressing flexibility

Service



Help is nearby. When you need an upgrade or repair, you'll find facilities all across North America and more than 1,000 dealers ready to assist you.

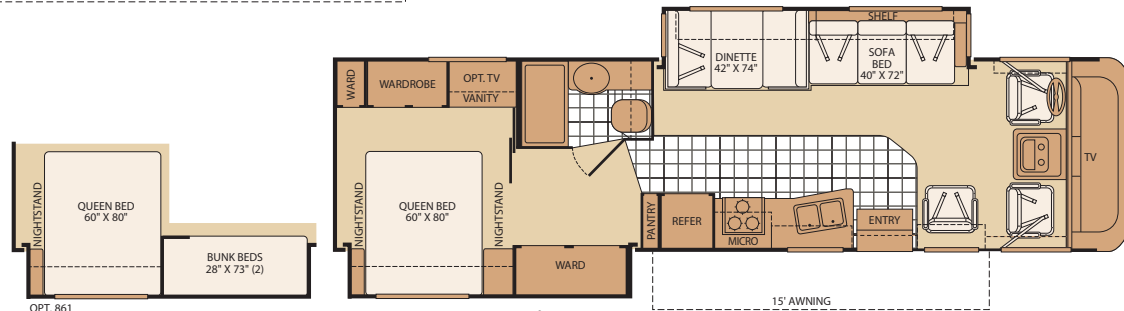
34G



Interior Storage Capacity: 177 cu. ft.  
Exterior Storage Capacity: 136 cu. ft.

- Luxurious facing sofas for that residential feeling
- Large wardrobes, linen cabinet and pantry creates excellent storage flexibility

34N



OPT. 861 BUNK BEDS

Interior Storage Capacity: 191 cu. ft.  
Exterior Storage Capacity: 152 cu. ft.

- Large galley for functional entertaining
- Optional bunk beds create multiple sleeping or storage solutions

Seatbelt configuration may vary depending on options chosen.

## STANDARD FEATURES

### INTERIOR

#### Throughout

- 12V Deep Cycle House Battery
- 3 Interior Décor
- 34,000 BTU Furnace
- 6 Gallon Quick Recovery Water Heater w/Direct Spark Ignition
- Battery Disconnect System
- Automotive A/C Heater Combo
- Complete TuffPEX Plumbing System
- Deluxe Roller Bearing, Full Extension Drawer Guides
- Fiber Ceilings for Superior Sound Dampening
- Full Basement Configuration
- Incandescent Lighting
- Interior Overhead Storage
- On Demand Water Pump w/Filter
- Systems Monitor Panel 120V/12V AC/DC Converter/ Central Electrical Panel w/Charger
- Wall Mounted Heat Registers
- Water Heater Bypass

#### Driver Convenience

- 3 Point Seat Belts at Driver & Front Passenger Seats
- AM/FM Radio w/CD & Electronic Tuning
- Auxiliary Start Circuit
- Cruise Control
- Double Swivel Sun Visors w/Map Pockets
- Driver/Front Passenger Captain's Chairs w/Reclining Back/Slide Controls
- Engine Cover Convenience Tray
- Intermittent Wiper Control
- Radio Switch Main/Auxiliary Power
- Tilt Steering Wheel

#### Galley

- 3 Burner Cooktop
- 8 cu.ft. Dometic® Refrigerator
- Coordinated Cabinet Hardware
- Hardwood Mortise & Tenon Frame Cabinet Doors
- Large Stainless Steel Double Sink
- Microwave w/Range Hood & Light
- Single Lever Faucet
- Sink Cover/Cutting Board
- Wood Drawer Construction

#### Living Room

- 12V Power Jack
- 24" Flat Screen TV in Front Overhead

- Carpet Pad
- Flexsteel® Furniture
- Telephone Jack
- Video Control Box
- Vinyl Floor Covering in Lavy/Galley

#### Bedroom

- Expanded Wardrobe Storage
- Innerspring Mattress
- Rear TV Receptacle

#### Bathroom

- Marine Toilet
- Molded ABS Shower/Tub w/Surround
- Power Bath Vent
- Skylight in Tub/Shower
- Vanity Lights

#### Safety/Convenience

- 10 ABC Fire Extinguisher
- Carbon Monoxide Detector/Alarm
- Propane Detector/Alarm
- Smoke Detector/Alarm
- Lighted Entry Grab Handle
- Child Safety Tether
- Multiple Seatbelt Locations

### EXTERIOR

#### Throughout

- 3 Colorway Graphics to Match Decor
- 30 Amp Service
- 4.0 kW Onan® MicroQuiet Generator
- Amber Porch Light
- Awning Rail/Drip Molding (Both Sides)
- Exterior Rear View Mirrors
- DuPont® Full-Body Paint
- Outstanding Exterior Styling
- Patio Awning
- Roof Ladder
- TV Antenna w/Signal Booster

#### Automotive

- Aluminum Wheels (22.5 Wheel Ford®) (All Workhorse™)
- Halogen Headlights w/Polycarbonate Lens
- Spare Tire (31M & 32K Only)
- Trailer Hitch w/7 Pin Electrical Hook-Up†
- Valve Extenders on Rear Wheels
- Stainless Steel Wheel Simulators (19.5 Wheel Ford®)

#### Safety/Convenience

- Deadbolt Latch on Entry Door
- Dual Battery Charge Control
- High Mounted Large Taillights
- Large Entry Assist Handle
- One-Piece Swing-Down Engine Access Door
- Park Cable Receptacle
- Patio Receptacle
- Power Entry Step
- Slider Windows Throughout
- Automotive Safety Glass
- Daytime Running Lights
- Hydraulic 4 Wheel Disk Brakes w/4 Wheel Anti-Lock Brakes

#### Storage

- Continuous One-Piece Compartment Bulb Seal
- EZ Store Slide-Out System
- Insulated Luggage Doors
- Large, Lighted Pass-Through Exterior Storage Compartment (Select Models)
- Lighted Luggage Compartments
- Rotomolded Polyethylene Luggage Compartments

#### Body Structure

- Power Platform® Plus Construction
- 27" Radius Entry Door
- 5,000 lb. Towing Capacity†
- Aluminum Interlocking Floor/Wall/Ceiling Framing
- Royal Tuff-Ply Radius Roof w/Ducted A/C & Flat Ceiling
- Two-Piece Fiberglass Front Cap
- Vacu-bond® Walls w/Smooth High Gloss Exterior Tuff-Coat® Fiberglass
- Vacu-bond® Floor and Ceiling
- Windshield Bonded to Fiberglass Front Cap

## OPTIONS

#### INTERIOR - Throughout

- Sirius Satellite Radio® (6 Month Subscription Included)
- Front 23" LCD HDTV/Rear 19" LCD HDTV

#### Galley

- 3 Burner Range w/Oven
- Convection Microwave Oven

#### Living Room

- Day/Night Pleated Shades
- Dual Pane Windows
- DVD Player
- Fan-Tastic® Power Roof Vent

- Ultraleather™ Hide-A-Bed
- Ultraleather™ Sofa Bed
- Wall to Wall Vinyl Flooring

#### Bedroom

- Rear 20" Flat Screen TV
- Bunk Beds (34N Only)

#### EXTERIOR - Throughout

- 4 Point Automatic Levelers
- Diamond Shield Clear Front Protective Mask
- Dual 6V Deep Cycle 217 Amp Auxiliary Batteries
- Electronic Climate Control w/Dual A/C w/5.5kW Onan® Generator Upgrade (Recommended for extreme temperatures & high humidity conditions)
- Exterior Wash Unit

#### Safety/Convenience

- Rear Vision Camera
- Remote/Heated Rear View Mirrors

## FLEETWOOD ADVANTAGES

- Power Platform® Plus Construction (Fleetwood Exclusive)
- Pass Through Storage
- DuPont® Full-Body Paint
- Deluxe Roller Bearing, Full Extension Drawer Guides
- 4 Floor Plans from 32' to 35' with Double Slide-Outs



## WEIGHTS AND MEASUREMENTS

### FORD® CHASSIS/WORKHORSE™ CHASSIS

MODELS	31M	32K	34G	34N
Engine Displacement (Liters)	6.8/8.1	6.8/8.1	6.8/8.1	6.8/8.1
Wheelbase (Inches)	208"/208"	208"/208"	228"/228"	228"/228"
GVWR (lbs) <sup>1</sup>	20,500/21,200	20,500/21,200	22,000/21,200	22,000/21,200
Front GAWR (lbs) <sup>2</sup>	7,000/7,500	7,000/7,500	7,500/7,500	7,500/7,500
Rear GAWR (lbs) <sup>2</sup>	13,500/14,500	13,500/14,500	14,500/14,500	14,500/14,500
GCWR (lbs) <sup>3</sup>	25,500/26,000	25,500/26,000	26,000/26,000	26,000/26,000
Hitch Rating Weight (lbs) <sup>1</sup>	5,000/5,000	5,000/5,000	5,000/5,000	5,000/5,000
Tongue Weight (lbs) <sup>1</sup>	500/500	500/500	500/500	500/500
Fuel Capacity (gal)	75/75	75/75	75/75	75/75

### DIMENSIONS & CAPACITIES

MODELS	31M	32K	34G	34N
Overall Length <sup>4</sup>	32' 7"	33' 7"	35' 7"	35' 7"
Overall Height (with A/C)	12' 0"	12' 0"	12' 5"	12' 5"
Overall Width (maximum) <sup>5, 6</sup>	102"	102"	102"	102"
Interior Height (maximum)	79"	79"	79"	79"
Interior Width (maximum)	96"	96"	96"	96"
Fresh Water Holding Tank (gal)	60	85	85	85
Grey Water Holding Tank (gal)	40	58	58	58
Black Water Holding Tank (gal)	30	42	42	42
Appliance Propane Tank (gal) (WC) <sup>7</sup>	25	25	25	25
Water Heater Tank (gal)	6	6	6	6

Liquid Weight Reference: Water (gal) = (8.3 lbs/3.8 kgs) Fuel (gal) = (6.1 lbs/2.8 kgs) Propane (gal) = (4.2 lbs/1.9 kgs)  
Metric Conversion: Multiply pounds x 0.453 to obtain kilograms. Multiply gallons x 3.785 to obtain liters. Multiply liters x 61 to obtain cubic inches.

- GVWR (Gross Vehicle Weight Rating) is the maximum permissible weight of this fully loaded motor home. The GVWR is equal to or greater than the sum of the (UVW) unloaded vehicle weight plus the (CCC) cargo carrying capacity\*.
- GAWR (Gross Axle Weight Rating) is the maximum permissible loaded weight a specific axle is designed to carry.
- GCWR (Gross Combined Weight Rating) is the value specified by the motor home manufacturer as the maximum allowable loaded weight of this motor home with its towed vehicle. Towing and braking capacities may be different. Refer to Fleetwood and chassis manufacturer's manuals for complete information.
- Length measured from front bumper to rear bumper (excludes accessories).
- Excludes safety equipment and awnings.
- Motor homes feature a body-width over 96" which will restrict your access to certain roads. Before purchasing, you should research any state and/or province road laws which may affect your usage.
- Tank manufacturer's listed water capacity (WC). Actual propane capacity is 80% of water listing as required by the safety code.

- The chassis manufacturer recommends the installation of a supplemental brake control system to activate the brakes on the vehicle or trailer you are towing. Hitch receiver ratings expressed are maximum for the hitch receiver installed and may require the purchase of additional equipment that is dependent on the weight of the towed load. Consult with hitch receiver manufacturer for further information.

N/A = not available at time of printing.

\*UVW and CCC are found on the cargo carrying capacity label in each RV.

**IMPORTANT— PLEASE READ:** Product information, photography and illustrations included in this publication were as accurate as possible at the time of printing. For further product information and changes, please visit our website at [www.fleetwoodrv.com](http://www.fleetwoodrv.com) or contact your local Fleetwood dealer. Prices, materials, design and specifications are subject to change without notice. All weights, fuel, liquid capacities and dimensions are approximate. Fleetwood has designed its recreational vehicles to provide a variety of uses for its customers. Each vehicle features optimal seating, sleeping, storage and fluid capacities. The user is responsible for selecting the proper combination of loads (i.e. occupants, equipment, fluids, cargo, etc.) to ensure that the vehicle's capacities are not exceeded.

### CHASSIS

Model: Ford®/Workhorse™

Engine: 6.8L Triton V10/8.1L Vortec™ V8

Torque: 457 lb-ft @ 3250 RPM/455 lb-ft @3200 RPM

Alternator: 130 Amp/145 Amp

Transmission: Ford®, 5-Speed Automatic w/Overdrive

Workhorse™, 6-Speed Automatic w/Overdrive

Horsepower: 362HP/340HP

## Warranty



Exclusive RV ownercare warranty.  
See your Fleetwood dealer for details.

**TERRA<sup>®</sup> LX**  
CLASS A GAS



### RV OWNERCARE\*

Limited one-year/15,000-mile coach warranty and three-year/50,000-mile structural warranty, whichever occurs first, and it is fully transferable for the first 12 months. RV OWNERCARE is one of the RV industrys most comprehensive programs and includes systems, appliances, components and construction, with no deductible and no service charge. RV OWNERCARE coverage is provided from a company that will be around in the future to service your needs. See your nearest Fleetwood dealer for a full explanation of benefits and restrictions.

### CONTACT US

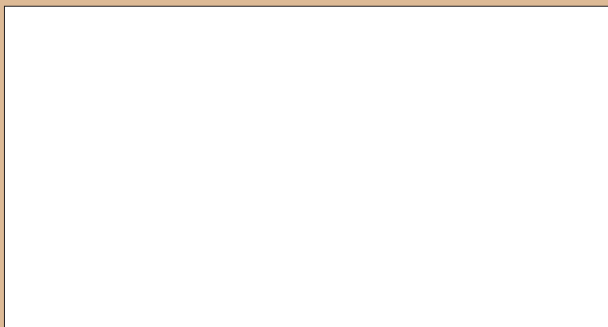
To locate a dealer near you, visit our website at [www.fleetwoodrv.com](http://www.fleetwoodrv.com) or call 1-800-444-4905. We can also be contacted at Fleetwood Customer Relations, P.O. Box 1007, Decatur, IN 46733.

### FLEETWOOD TRAVELCADE CLUB

As a Fleetwood owner, you're eligible to become a member of the Fleetwood Travelcade Club. Its a perfect way to meet other Fleetwood owners who love to travel across America and share in the RV lifestyle. Call (877) 577-2560, or visit our website at [www.fleetwoodrv.com/owners\\_clubs](http://www.fleetwoodrv.com/owners_clubs) to learn more, and join the fun.



YOUR LOCAL FLEETWOOD DEALER IS:



\*For complete info see your Fleetwood dealer.

©2007. Fleetwood Enterprises, Inc.  
Printed in the USA. Inventory Control Number TRALX08B2, 11/07.  
Model Year 2008, Second Edition.

### IMPORTANT—PLEASE READ

Product information, photography and illustrations included in this publication were as accurate as possible at the time of printing. For further product information and changes, please visit our website at [www.fleetwoodrv.com](http://www.fleetwoodrv.com) or contact your local Fleetwood dealer. Prices, materials, design and specifications are subject to change without notice. All weights, fuel, liquid capacities and dimensions are approximate. Fleetwood has designed its recreational vehicles to provide a variety of uses for customers. Each vehicle features optimal seating, sleeping, storage and fluid capacities. The user is responsible for selecting the proper combination of loads (i.e. occupants, equipment, fluids, cargo, etc.) to ensure that the vehicles capacities are not exceeded.

## WHY FLEETWOOD?



### Quality

There's no cutting corners. Skilled craftsmen build every Fleetwood RV for maximum durability and longevity.



### Trust

More people trust Fleetwood. After all, we've spent over 50 years perfecting RVs, earning the loyalty of generations of RVers.



### Passion

We're truly passionate about the RV lifestyle. Fleetwood was founded by RV enthusiasts, and that tradition continues today.



### Safety

You've got precious cargo. So we've engineered dozens of innovative safety features into our motor homes to give you more peace of mind.



### Service

Help is nearby. When you need an upgrade or repair, you'll find facilities all across North America and more than 1,100 dealers ready to assist you.



### Warranty

Exclusive RV ownercare warranty. See your Fleetwood dealer for details.

