



El Capitan Canyon

CREEKSIDE CABINS

CAVCO PARK MODEL RV's



FLOORPLANS & FEATURES

parkmodels.com

Cavco
PARK MODELS & CABINS™



COMMITMENT, EXPERIENCE, STABILITY AND STRENGTH

Cavco is publicly traded on the NASDAQ Global Select Market (symbol CVCO). The Cavco companies have been in business for more than 60 years. We have a strong commitment to provide people with quality park model RV's and cabins for seasonal/vacation living. All backed by exceptional service. Forbes Magazine selected Cavco as one of America's 100 Best Small Companies. In recognition of its innovation, customer service, and long term stability, Cavco Industries has been awarded the prestigious MHI Manufacturer of the Year Award for six consecutive years.

EXCELLENCE IN INNOVATION, QUALITY AND VALUE

We utilize a systems approach to building in controlled factory environments using only prime materials. Factory building offers shorter completion times, less waste and a better value than on-site construction methods. Our park model RV's are efficiently distributed by both independent and community retail centers. We customize styles and specifications for the exclusive use of camping and resort properties and provide accommodations for the Outdoor Hospitality Industry.

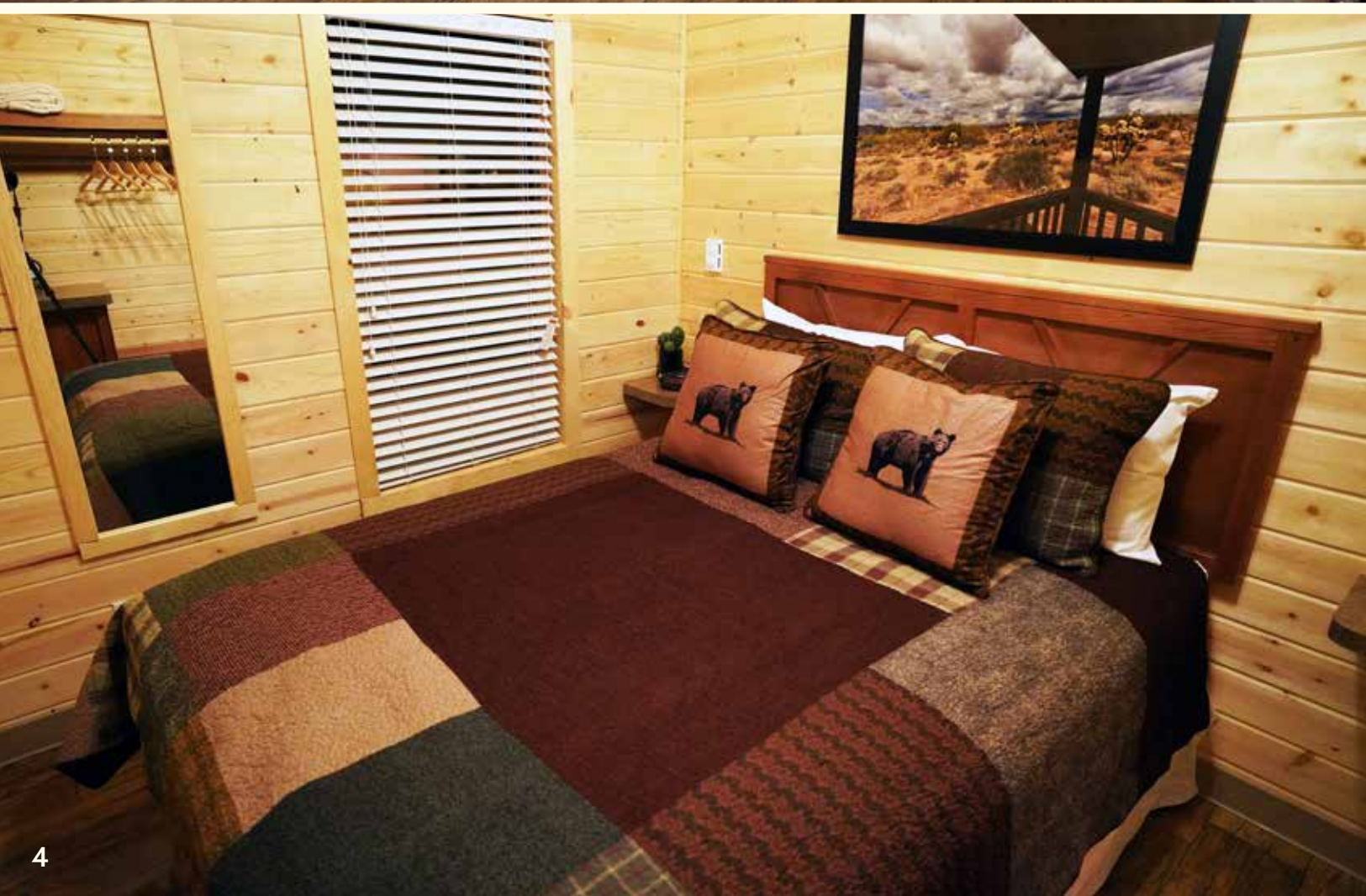
FINANCIALLY STRONG, MARKETING SAVVY AND BUILT TO LAST

Cavco is a debt free company and maintains one of the strongest balance sheets in the industry. We invest heavily in social media and marketing to inform people about the great lifestyle our products help provide. We will be here to serve consumers and wholesale customers long into the future.

IMPORTANT:

Because we continuously update and modify Cavco products it is important for you to know that our brochures and literature are for illustrative purposes only. All information contained herein may vary from the actual home we build. Dimensions are nominal and length and width measurements are from the exterior wall to exterior wall. The right is reserved to make changes at any time, without notice or obligation, in prices, colors, materials, specifications, features and models. Please check with your retailer for specific information about the home you select.





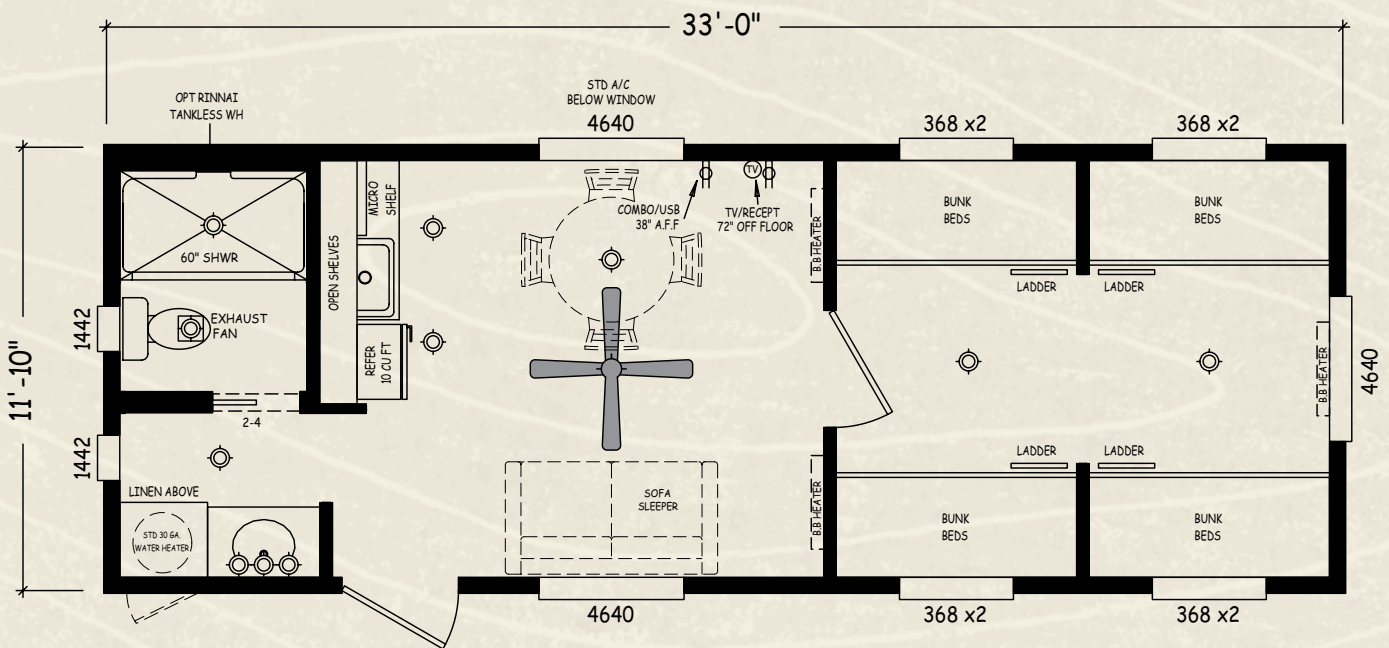
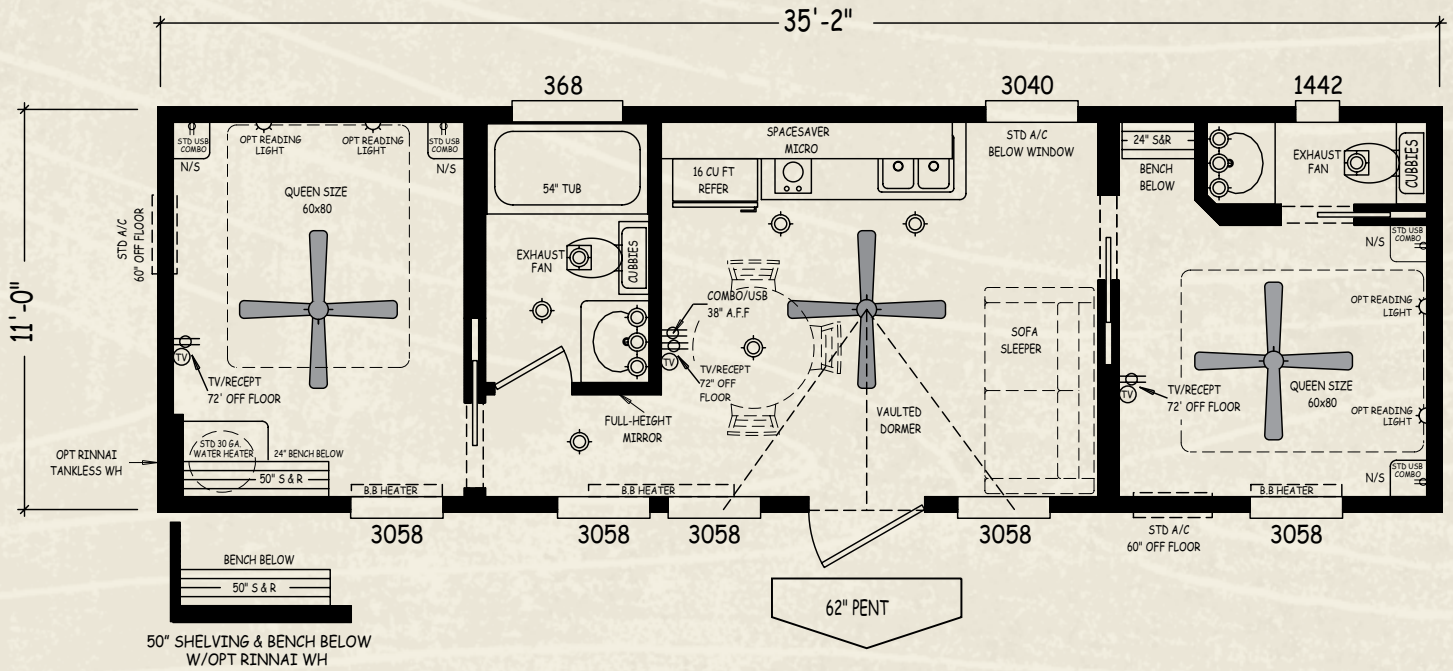






SLEEPS 6

CK-1135DQHB-20

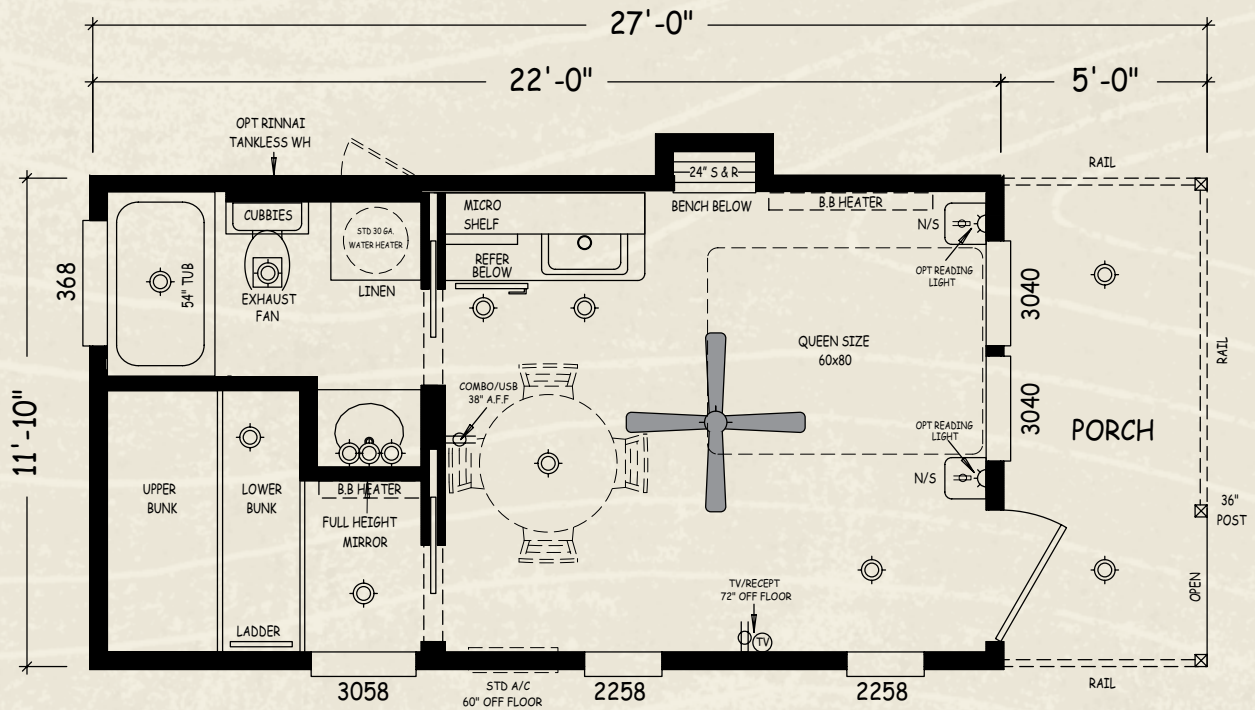
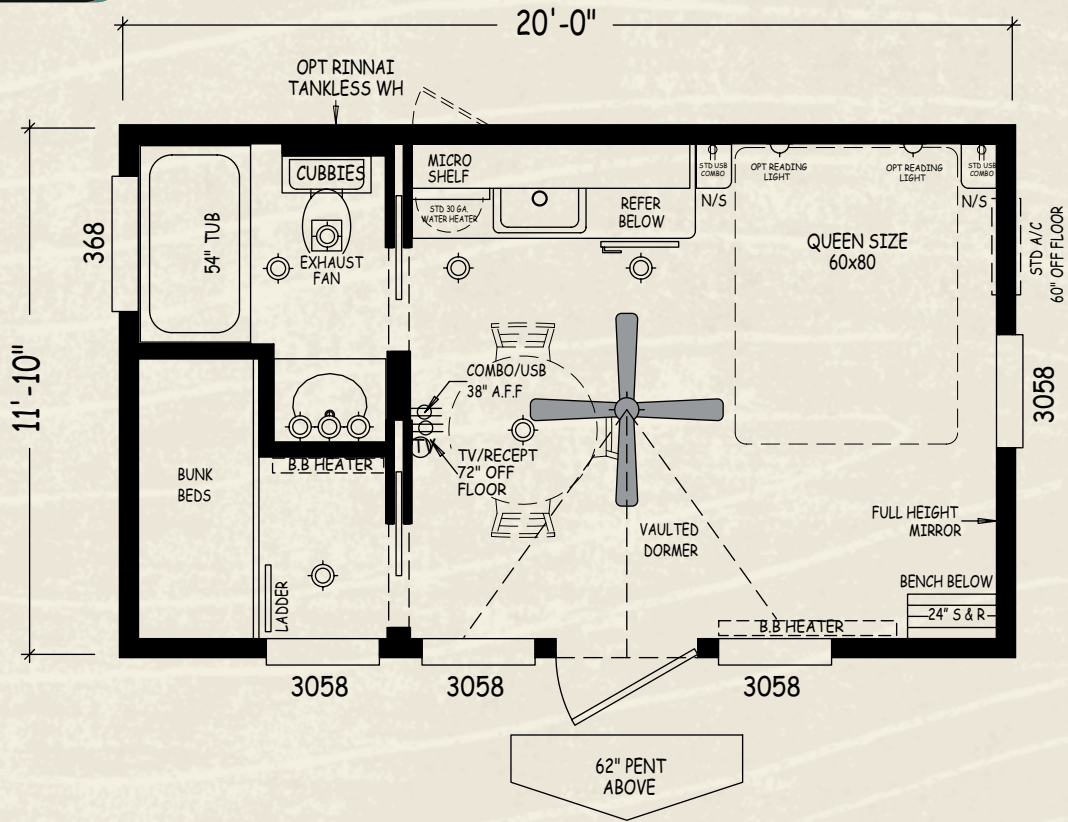


SLEEPS 10

CK-1233S1-20

CK-1220S-20

SLEEPS 4

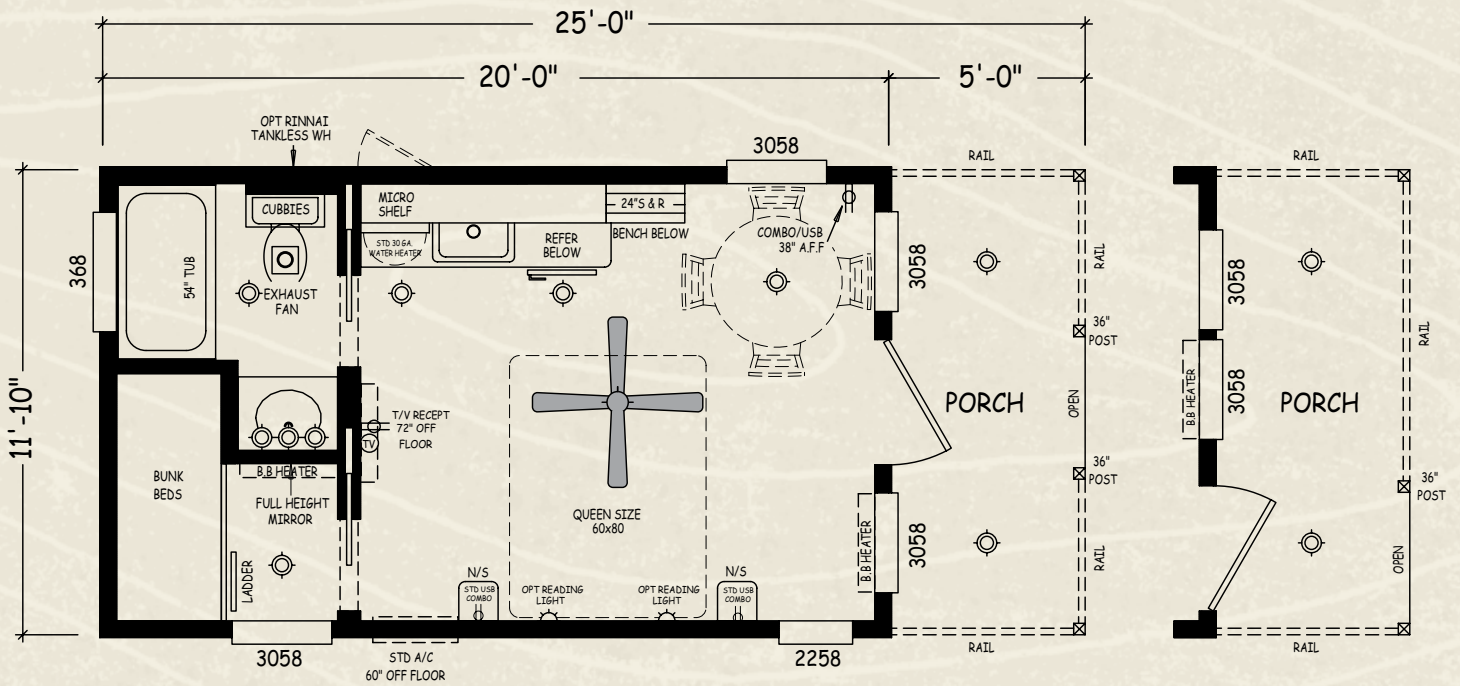
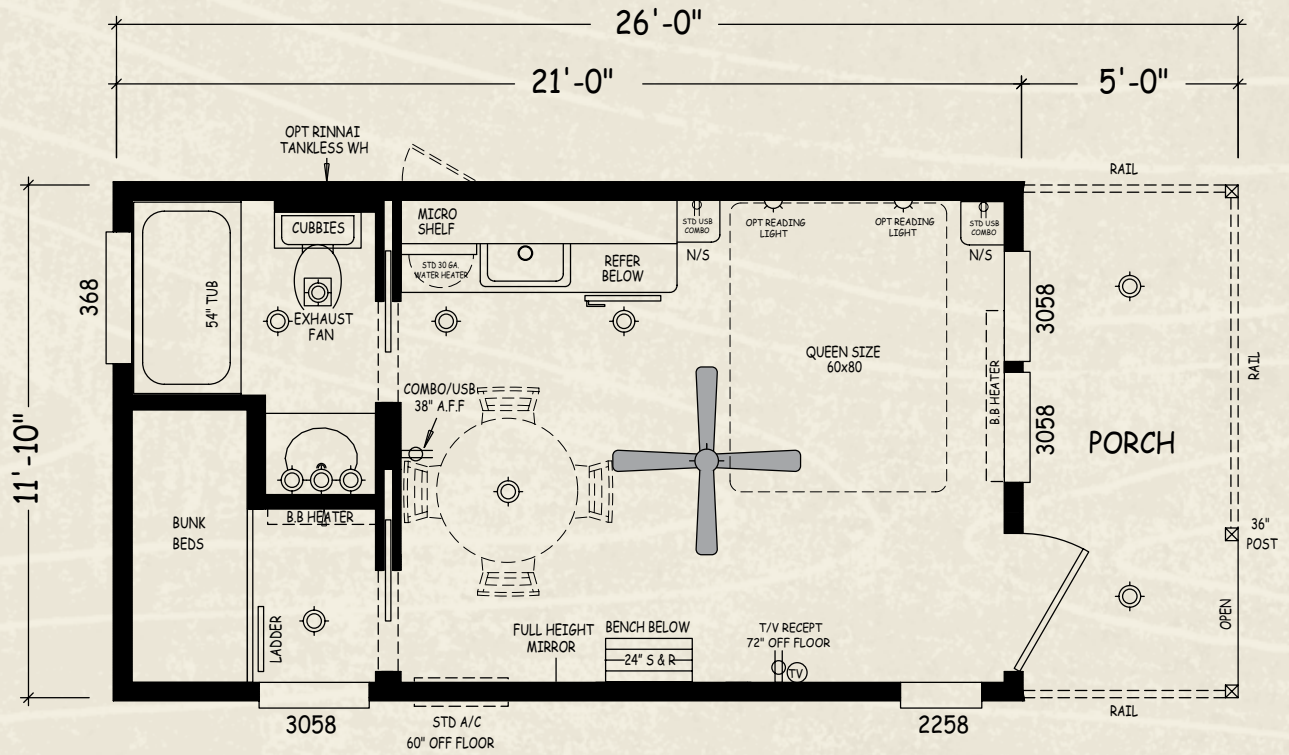


CK-1222FP-20

SLEEPS 5

SLEEPS 4

CK-1221FP-20

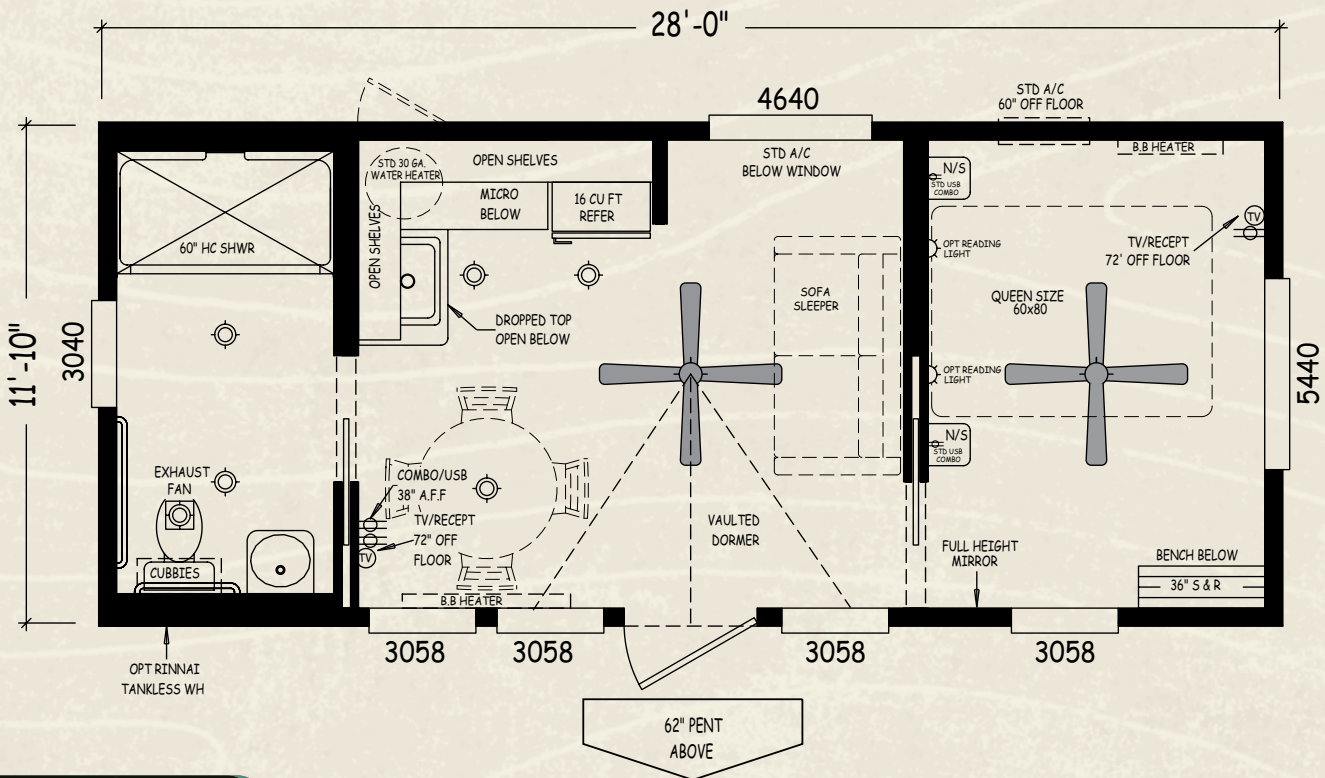
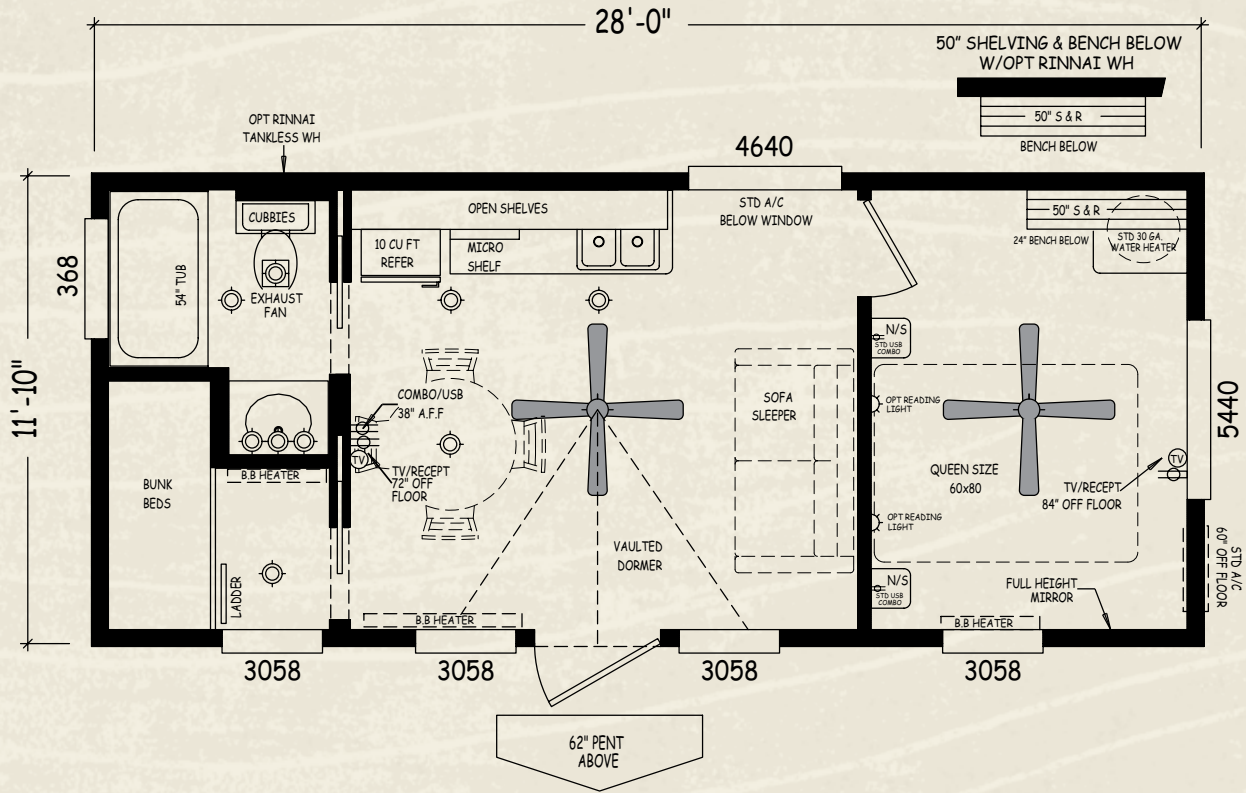


SLEEPS 4

CK-1220FP-20

CK-1228S-20

SLEEPS 6

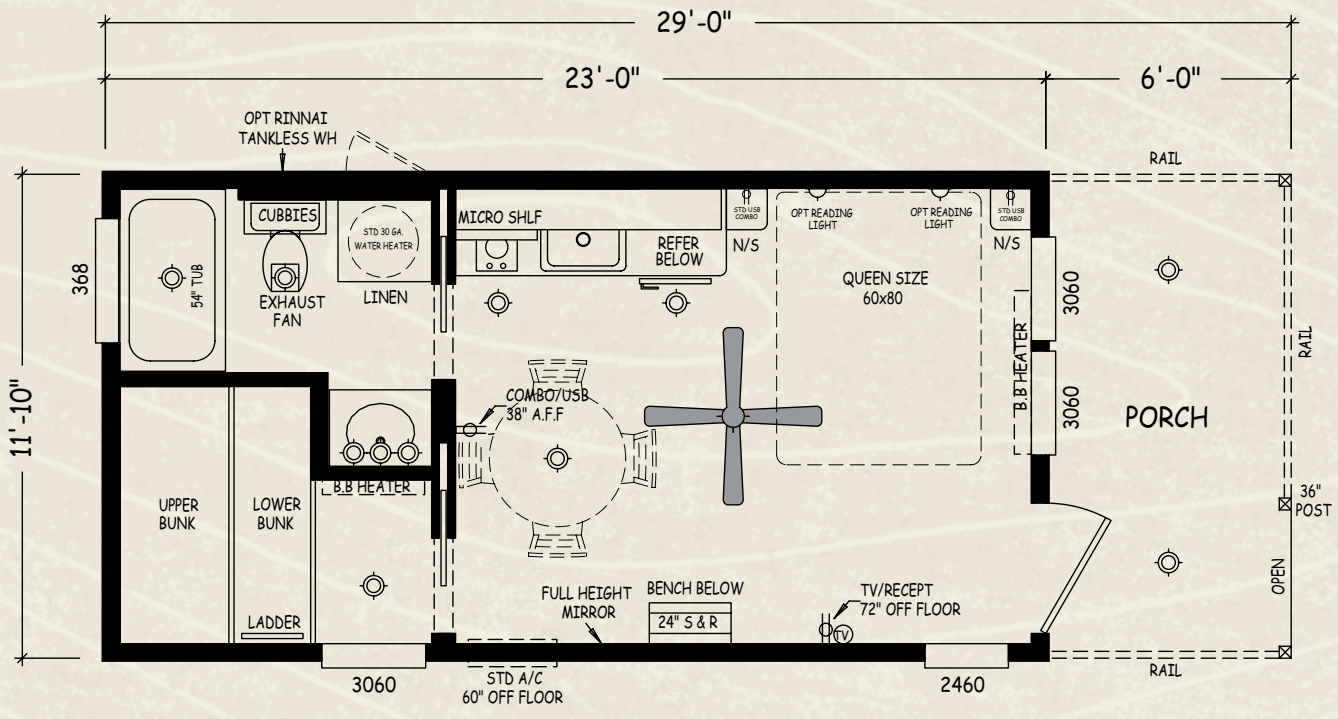
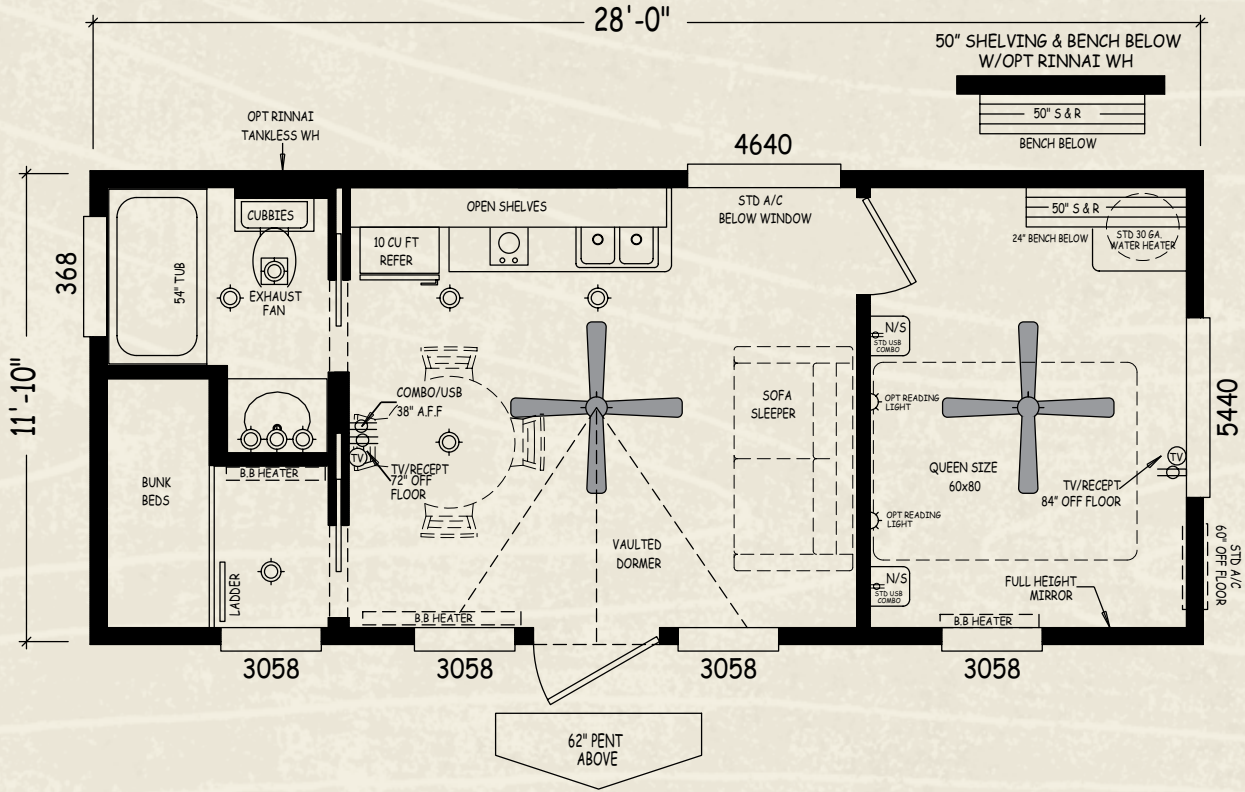


CK-1228SH-20

SLEEPS 4

SLEEPS 6

CK-1228SALT-20

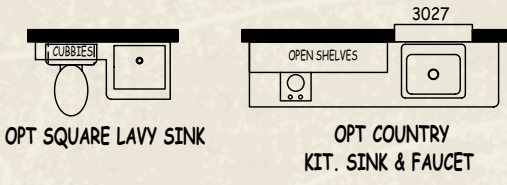
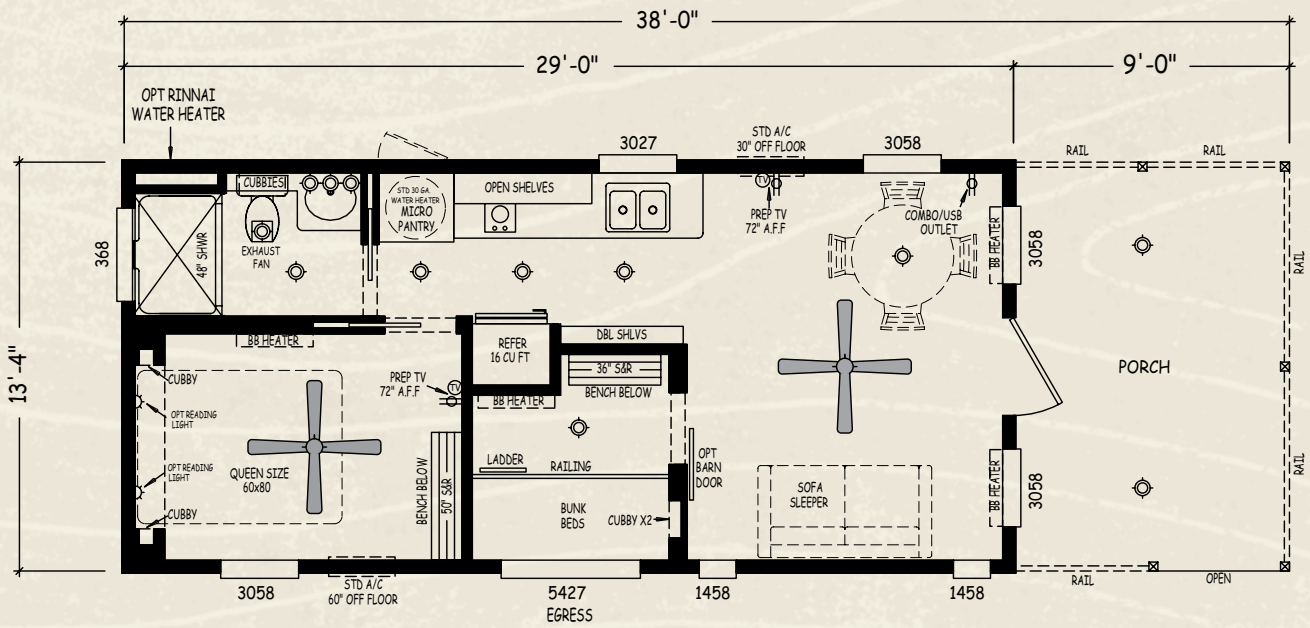
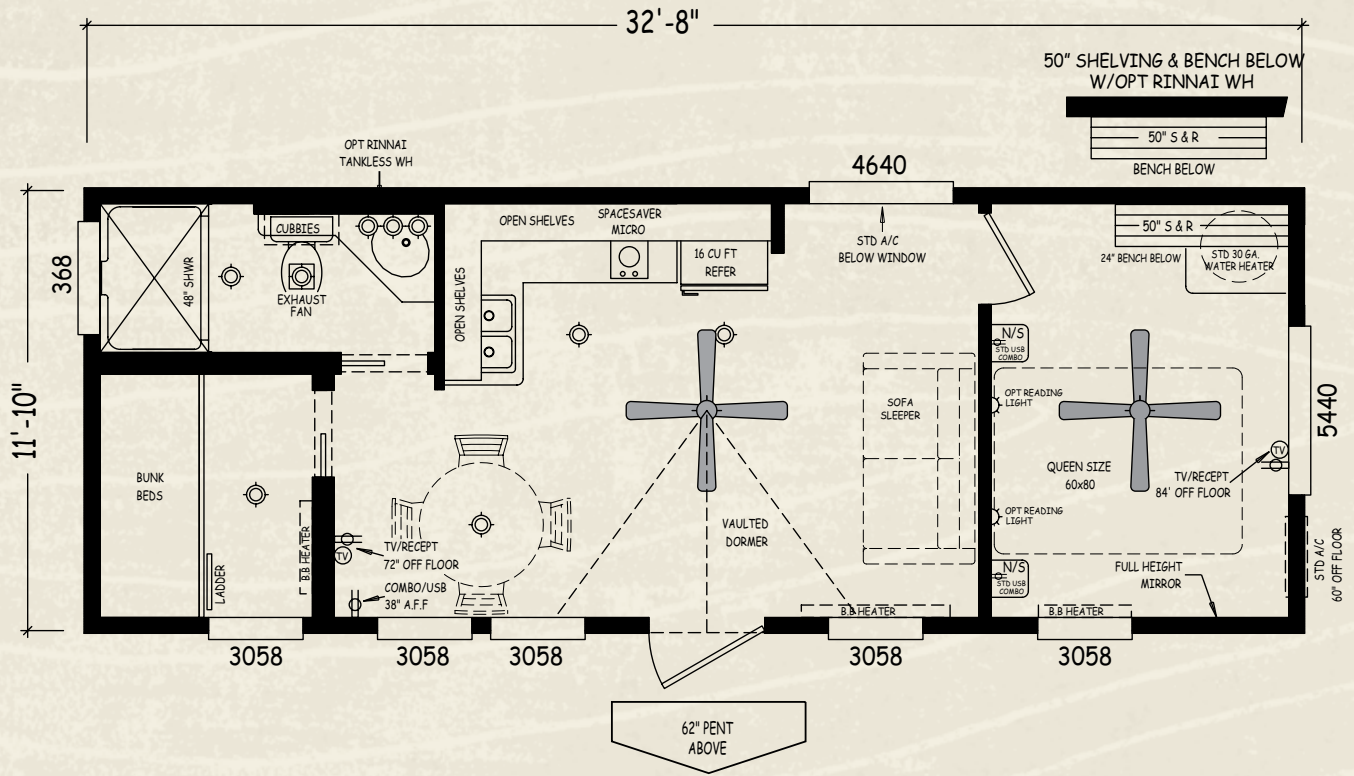


SLEEPS 5

CK-1223-FP-20

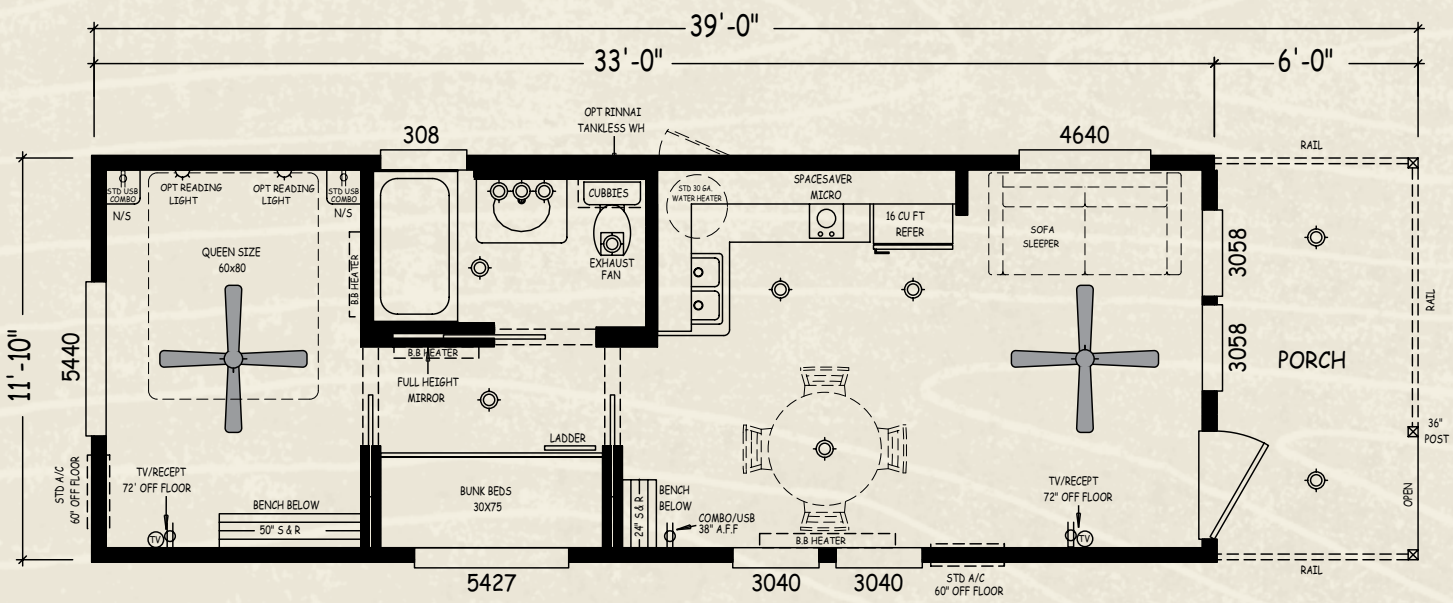
CK-1233S-20

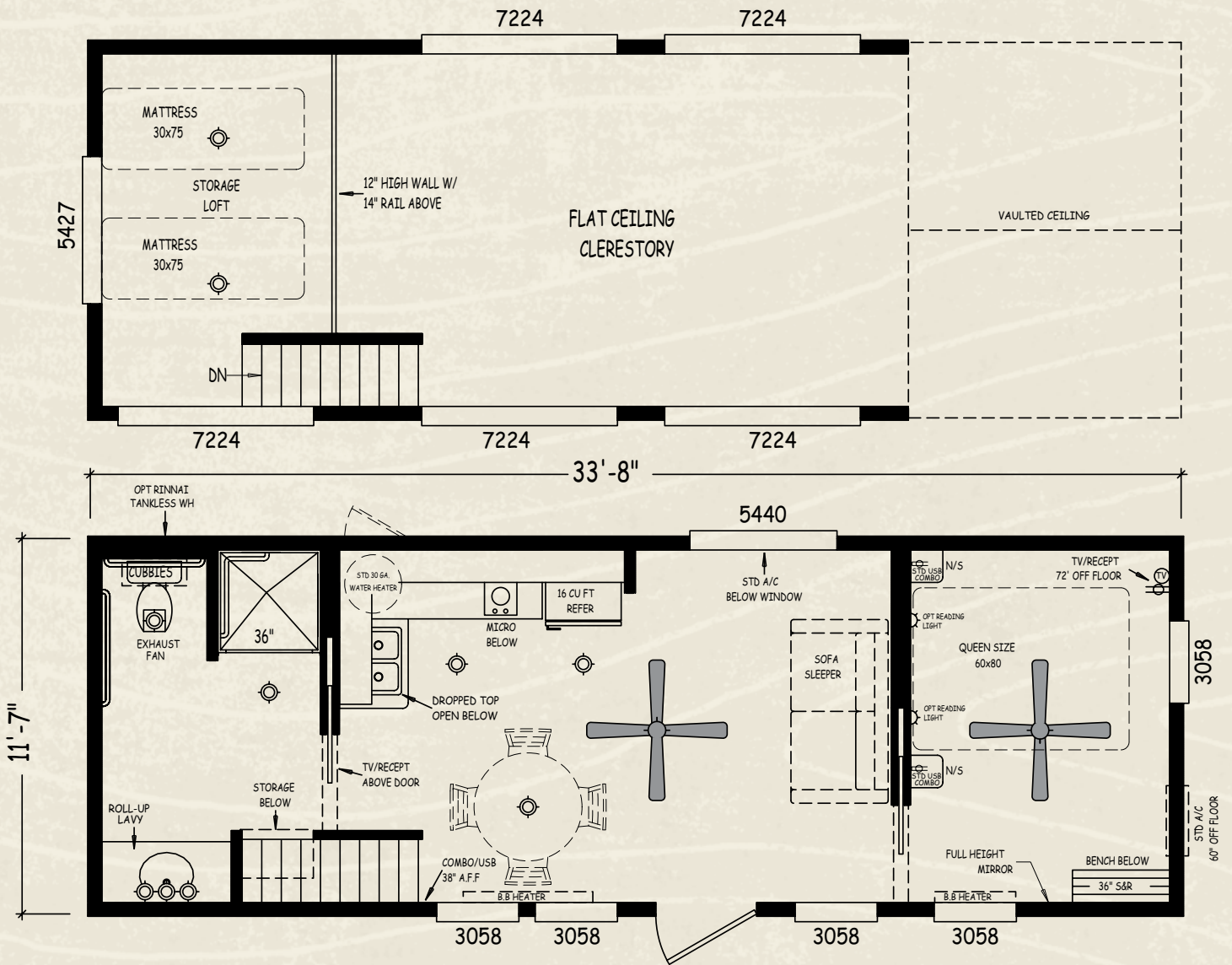
SLEEPS 6

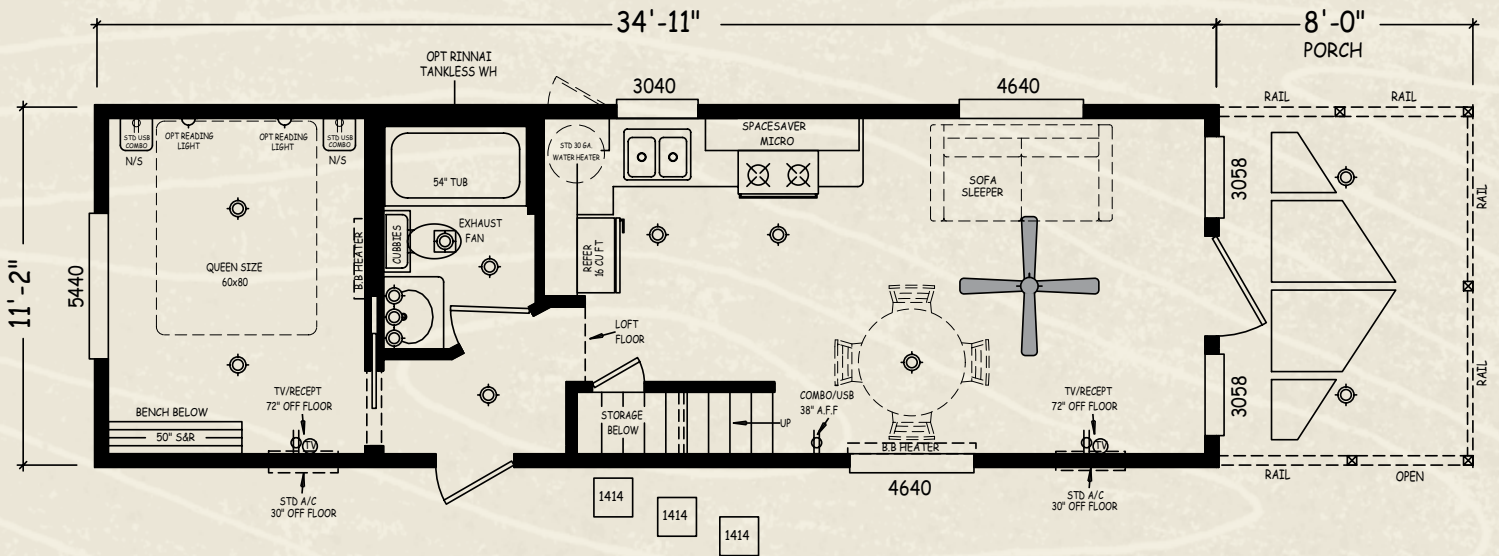
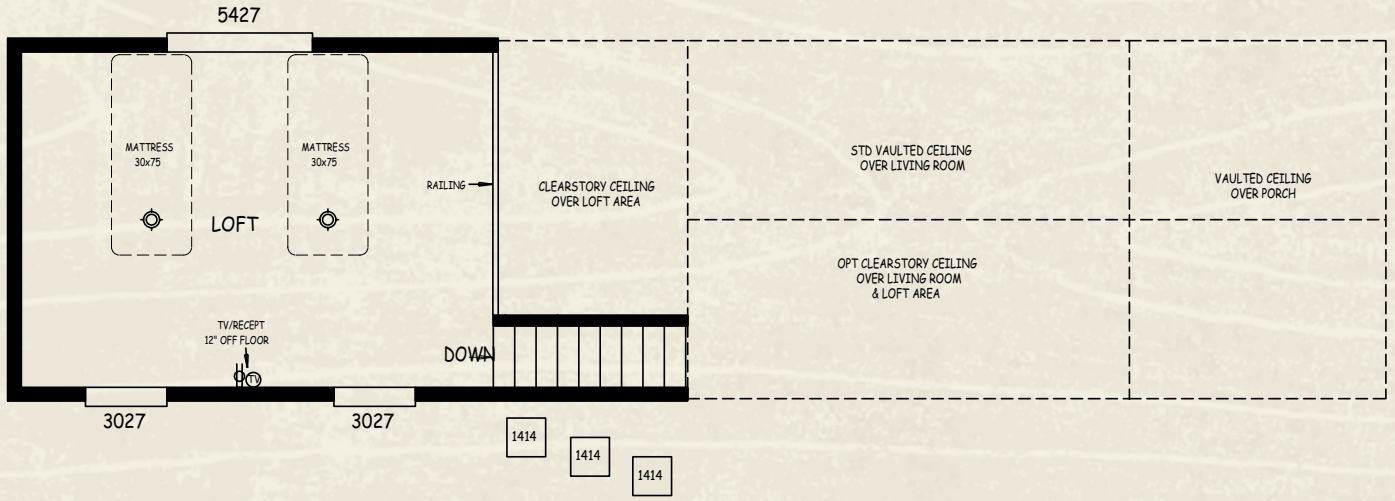


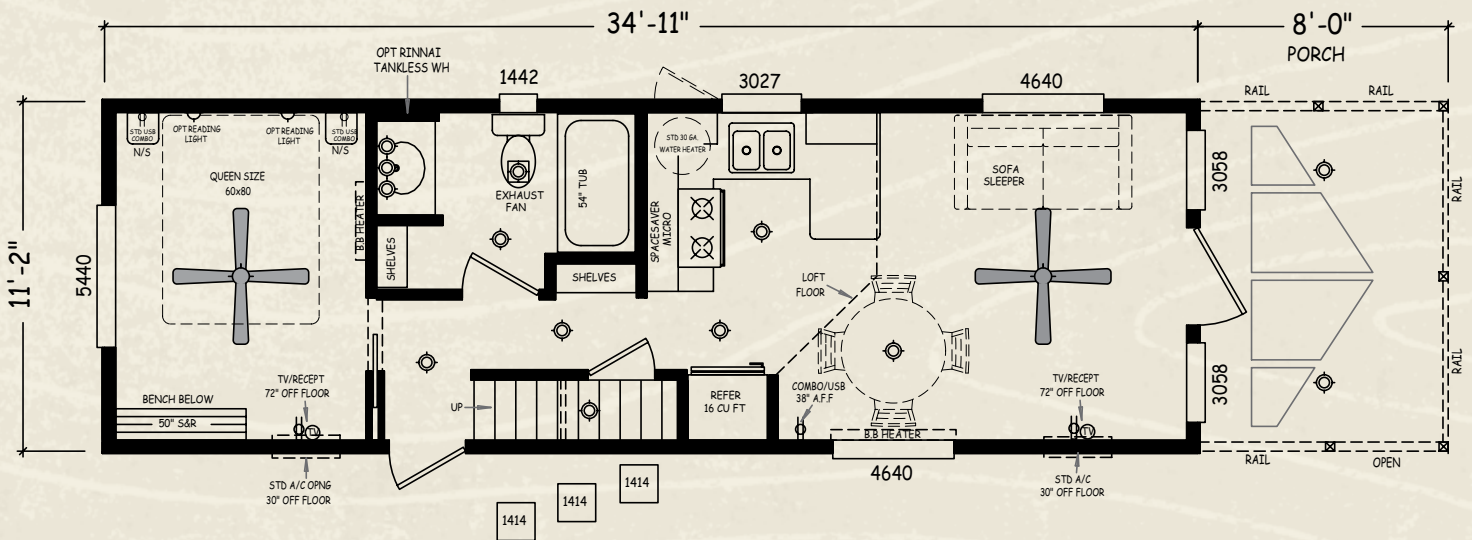
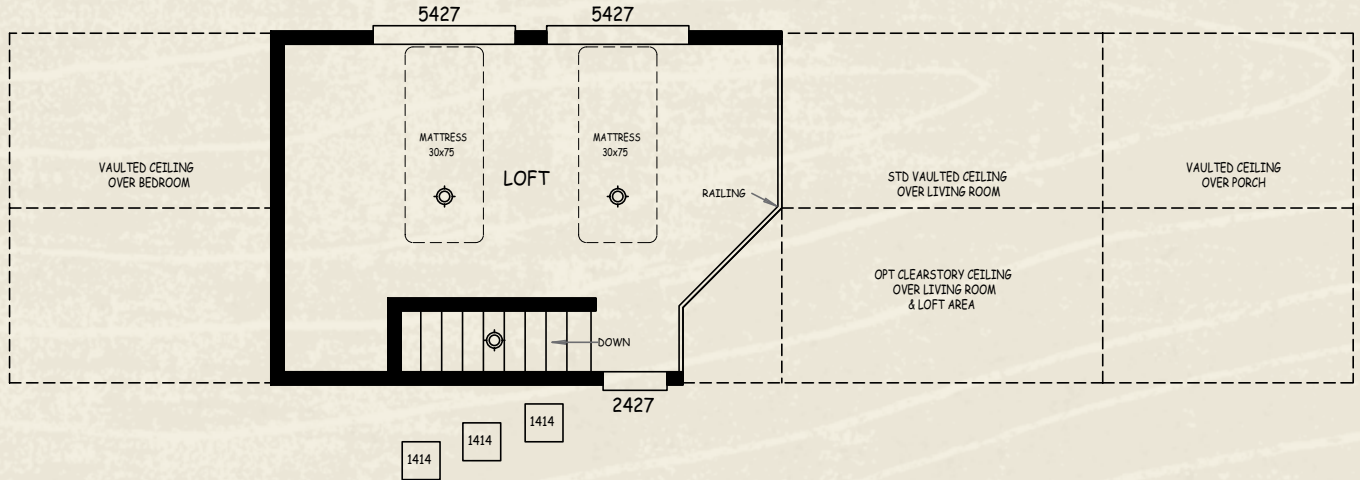
CK-1329FP-20

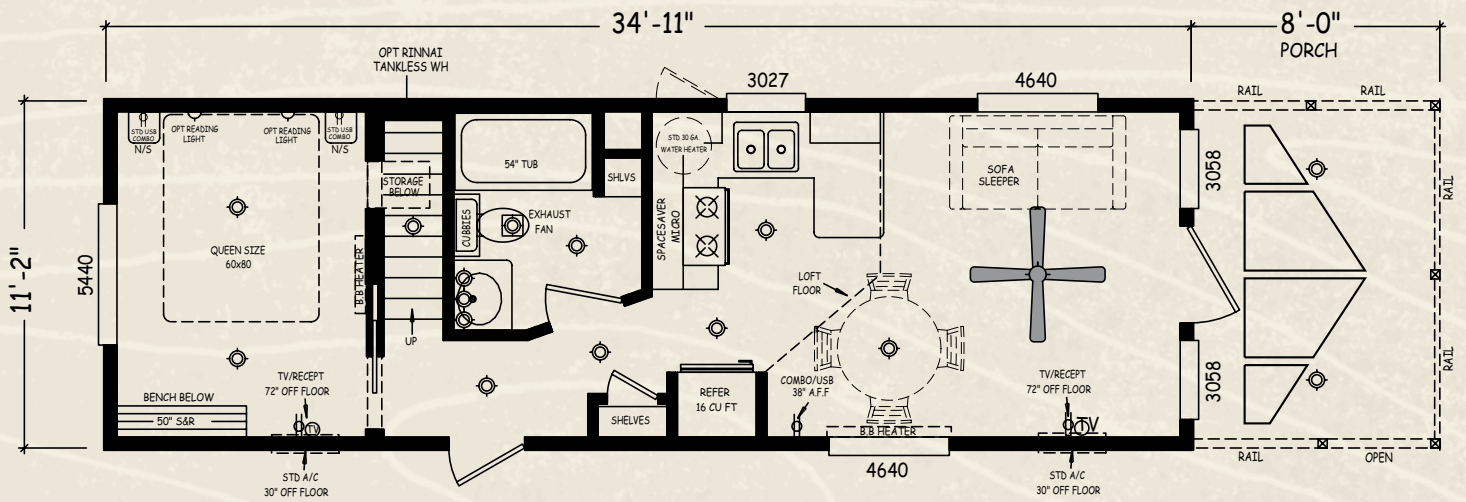
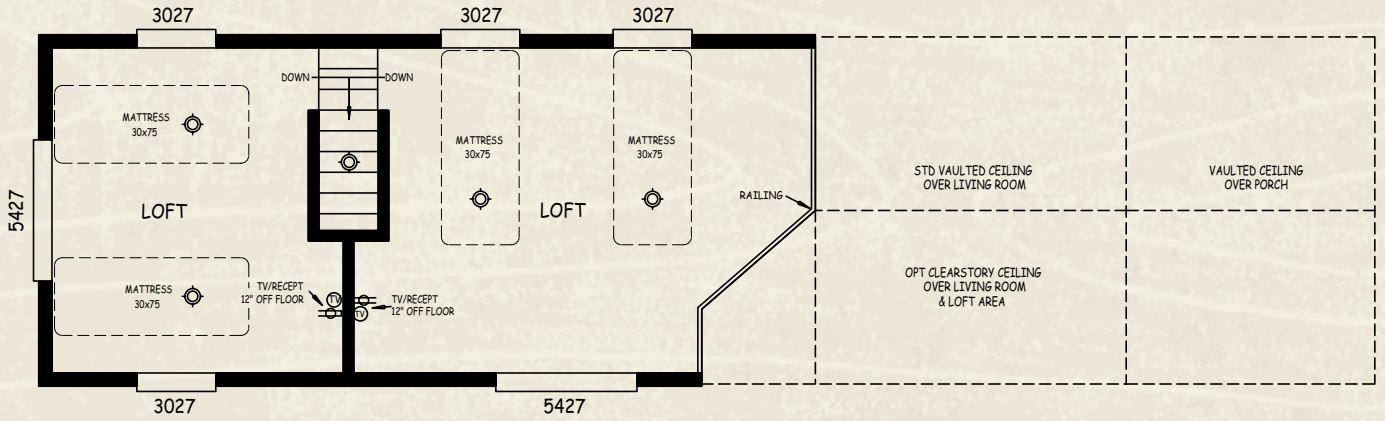
SLEEPS 6

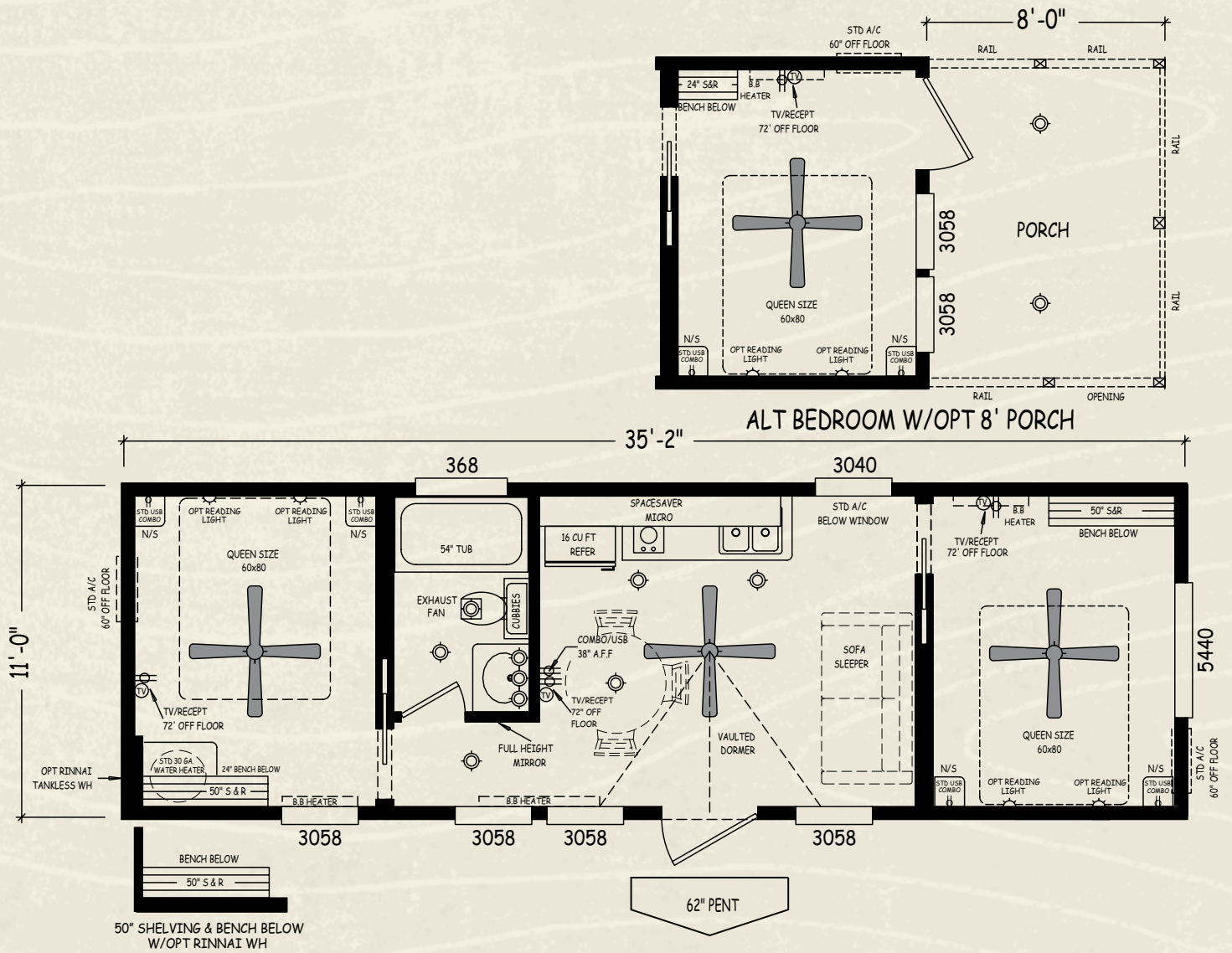


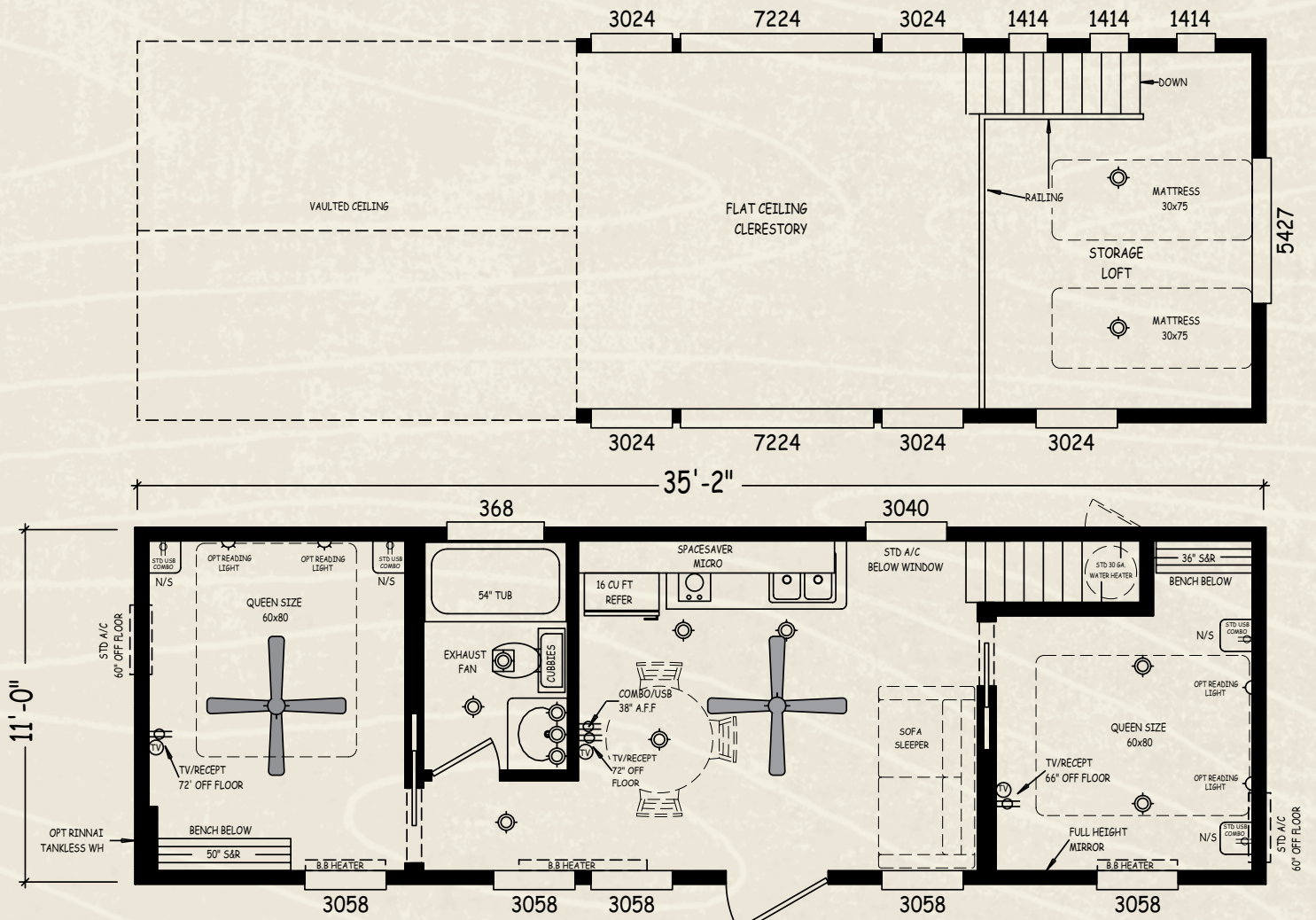


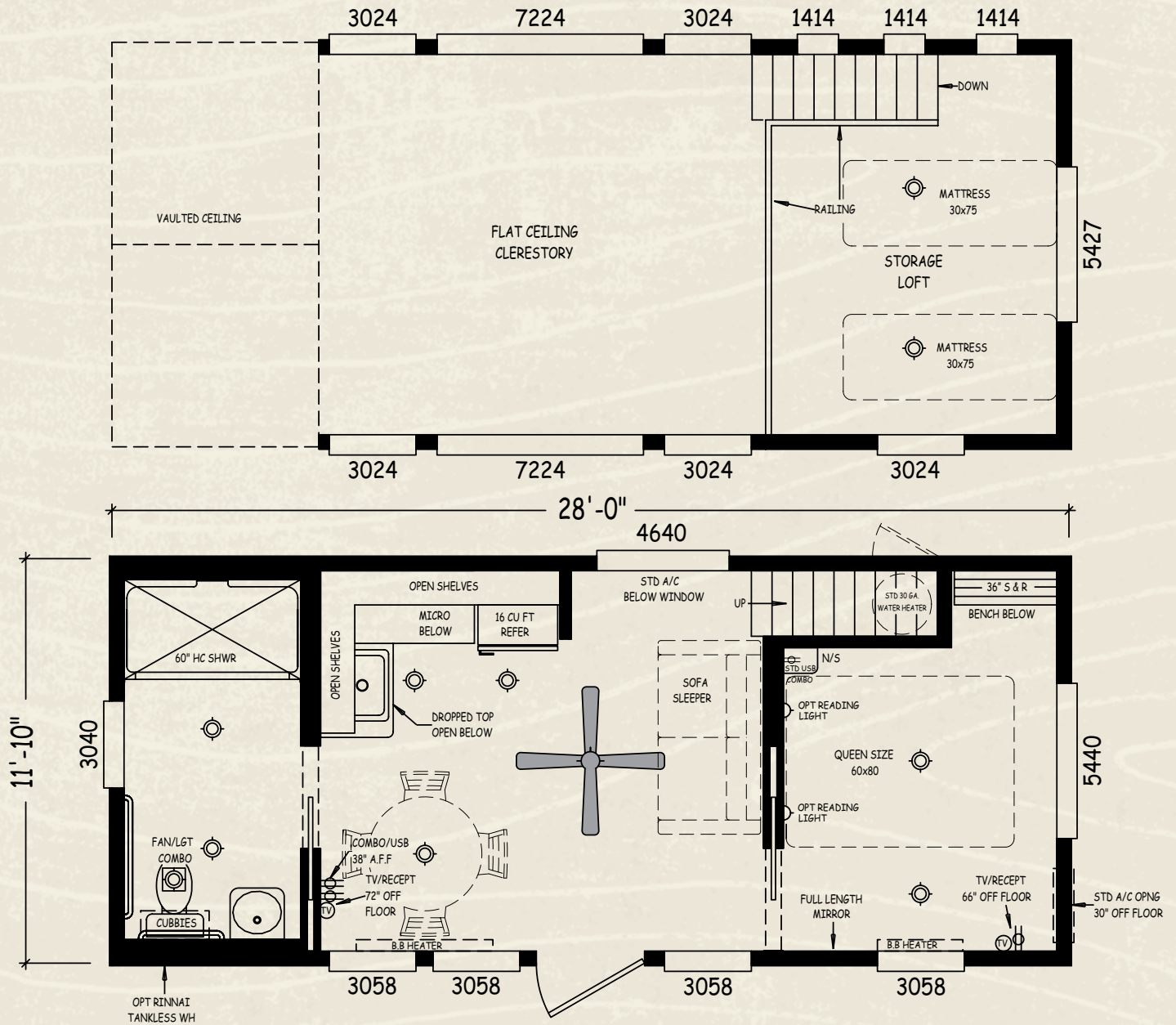


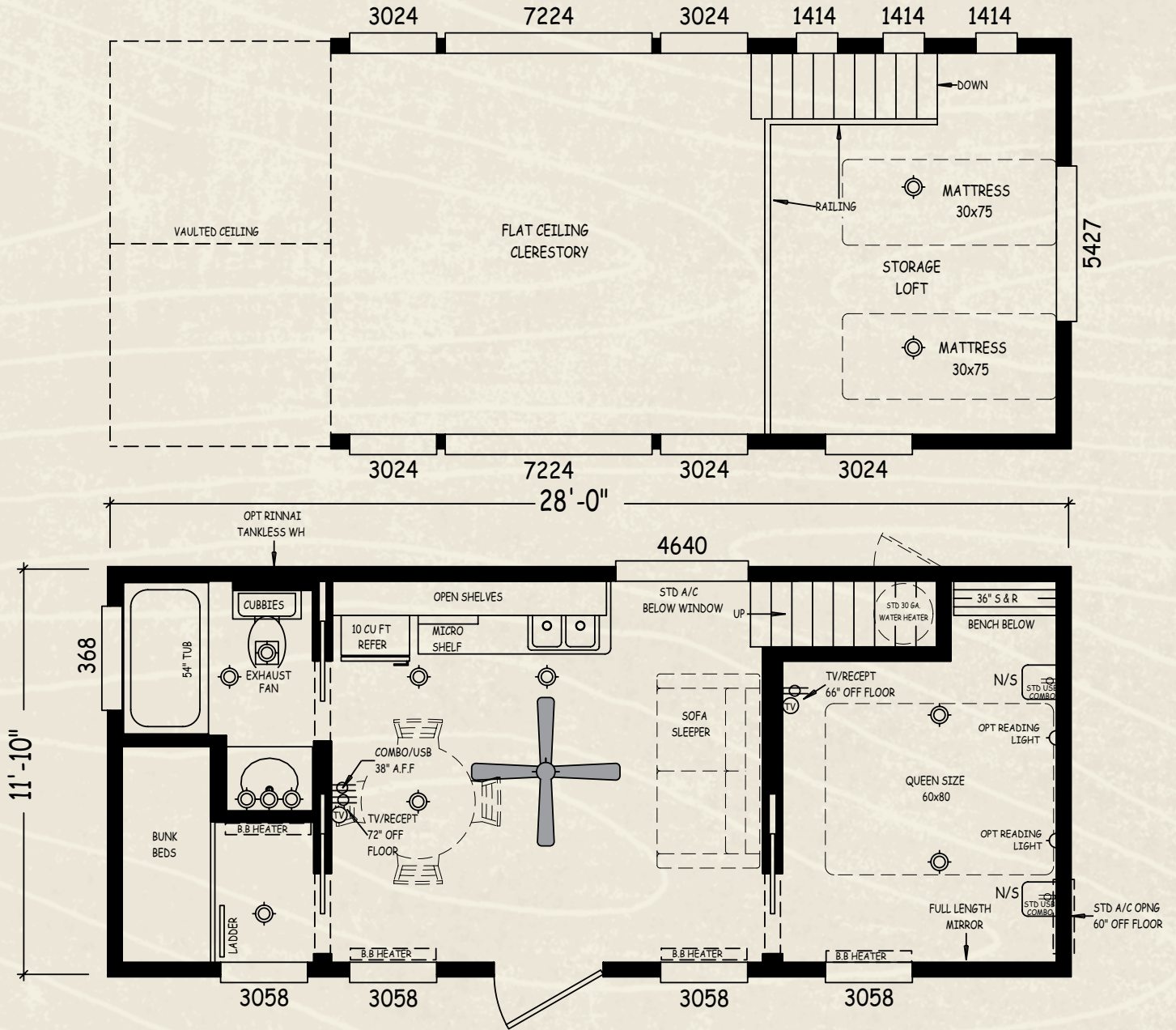


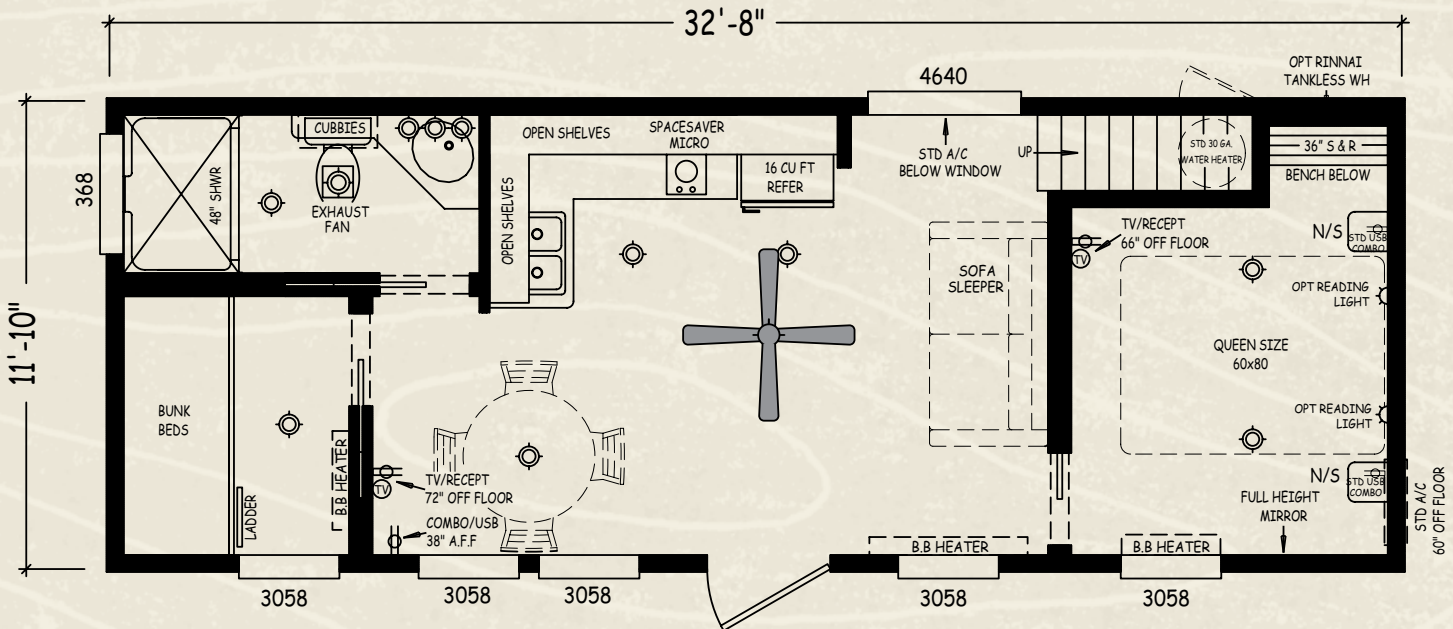
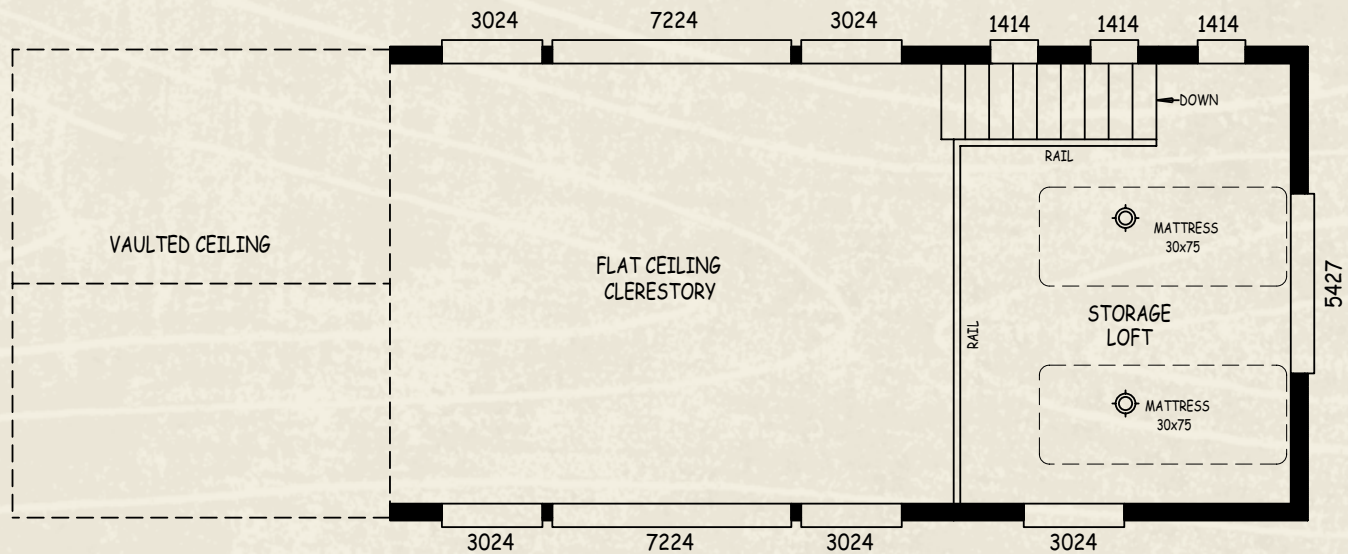












CREEKSIDE CABIN SERIES

STANDARD FEATURES

INTERIOR

- 1"x6" T&G pine interior throughout
- 1" Pine trim throughout
- Cathedral ceilings throughout except loft area
- Hardwood passage/pocket doors w/ HD hardware
- 2" White Faux mini blinds
- "Congoleum" LUX" lino t/o including loft storage area
- Upgraded lighting package
- Hardwired smoke detector on ceiling
- Fire extinguisher with metal bracket
- LP Leak gas detector (per std)
- Steel welded bunk railing (per std)
- Steel welded bunk ladder (per std)
- Satin fixtures throughout
- Vinyl cove base molding throughout
- Ceiling fan with light in main rooms
- Double switches on ceiling fans
- Prep for wall hung TV in main rooms
- Sofa sleeper with upgraded mattress
- Solid wood 40" dinette table with 4 chairs
- Upgraded queen mattress and box springs
- Metal platform bed base
- 2-Bunk mattresses in bunk room (per std)
- 2-Bunk mattresses in storage loft (per std)
- Vaulted dormer with pent window (per std)

KITCHEN / BATHROOM

- Laminate countertops
- Appliance package (per std)
- Kitchen overhead real wood double shelves
- Heavy duty brackets supporting double shelves
- Designer cabinet door handles (per std)
- S/L faucets in kitchen & bathroom
- Stainless steel kitchen sink
- Drop-in bathroom sink
- One piece fiberglass tub / shower or shower stall
- Bathroom exhaust fan with light
- Shower rod with liner
- Toilet paper holder
- Electric cooktop (per floorplan)

EXTERIOR

- Metal roof
- 8" Side Overhangs
- 5/4" Exterior trim around windows
- Pre-stained fiber cement lap siding
- OSB wood sheathing and building wrap
- Black exterior light at exterior door
- Vinyl framed dual glaze windows
- Front, rear and side overhangs
- Exterior GFI receptacle
- Full french outswing front door
- Internal mini blind in front door

PLUMBING, ELECTRICAL, HEATING & INSULATION

- PEX waterlines with low point drain
- Residential style U.L. approved electrical devices
- 30 or 50 amp electrical service with power cord
- Rocker light switches throughout
- R-14 Fiberglass floor insulation
- R-11 Fiberglass sidewall insulation
- R-28 Cellulose blown roof insulation
- Black iron gas pipe run to front or side
- Under sink waterline shut-off valves
- 30 Gallon electric water heater w/drain pan
- Wall mount A/C unit in main rooms
- Electric base board heaters with t-stat on wall

CONSTRUCTION

- Solid steel I-beam chassis construction
- Detachable 4' hitch
- Woven simplex underbelly material
- 2"x6" Floor joists, 16" on center
- OSB floor decking
- 2"x4" Sidewalls, 16" on center
- Steel strapping construction throughout
- Front porch with composite decking (per std)
- RVIA approved
- ANSI 119.5 approved

GLAMPING FOR ALL SEASONS

CONNECT WITH US ONLINE!



FACTORY LOCATIONS

Cavco Park Models

1366 S. Litchfield Rd. Goodyear, AZ 85338
(800) 622-8260



Chariot Eagle

931 NW 37th Ave. Ocala, FL 34475
(352) 629-7007



Fleetwood Park Models

2655 Progress Way, Woodburn, OR 97071
(503) 981-3136



Fairmont Park Models

502 S. Oakland Ave. Nappanee, IN 46550
(574) 773-7941



@CAVCOPARKMODELS

Leading the Park Model RV & Cabin Industry for over 20 years.



Cavco Industries, Inc. 3636 N Central Ave.
STE 1200, Phoenix, AZ 85012 | (602) 256-6263

www.parkmodels.com | www.cavco.com

© 2019 Cavco Industries, Inc. | All Rights Reserved | All Artwork Subject to Change



Cavco

PARK MODELS & CABINS™

www.parkmodels.com

For more information on specifications and options please visit our website.

©2018 Cavco Industries, Inc. | All Rights Reserved

