

PARK MODEL RVS

ALPINE LOFTS SERIES



The Alpine Lofts Series has spacious high ceilings and an above loft for added storage space. Standard features include residential-size appliances, hardwood raised panel cabinet doors and a variety of laminate countertop choices. You can also upgrade your loft to include a front porch and front entrance.

ALPINE LOFTS SERIES

120AL11351A

BEDS / BATHS / SQFT

BOX SIZE

KITCHEN STYLE

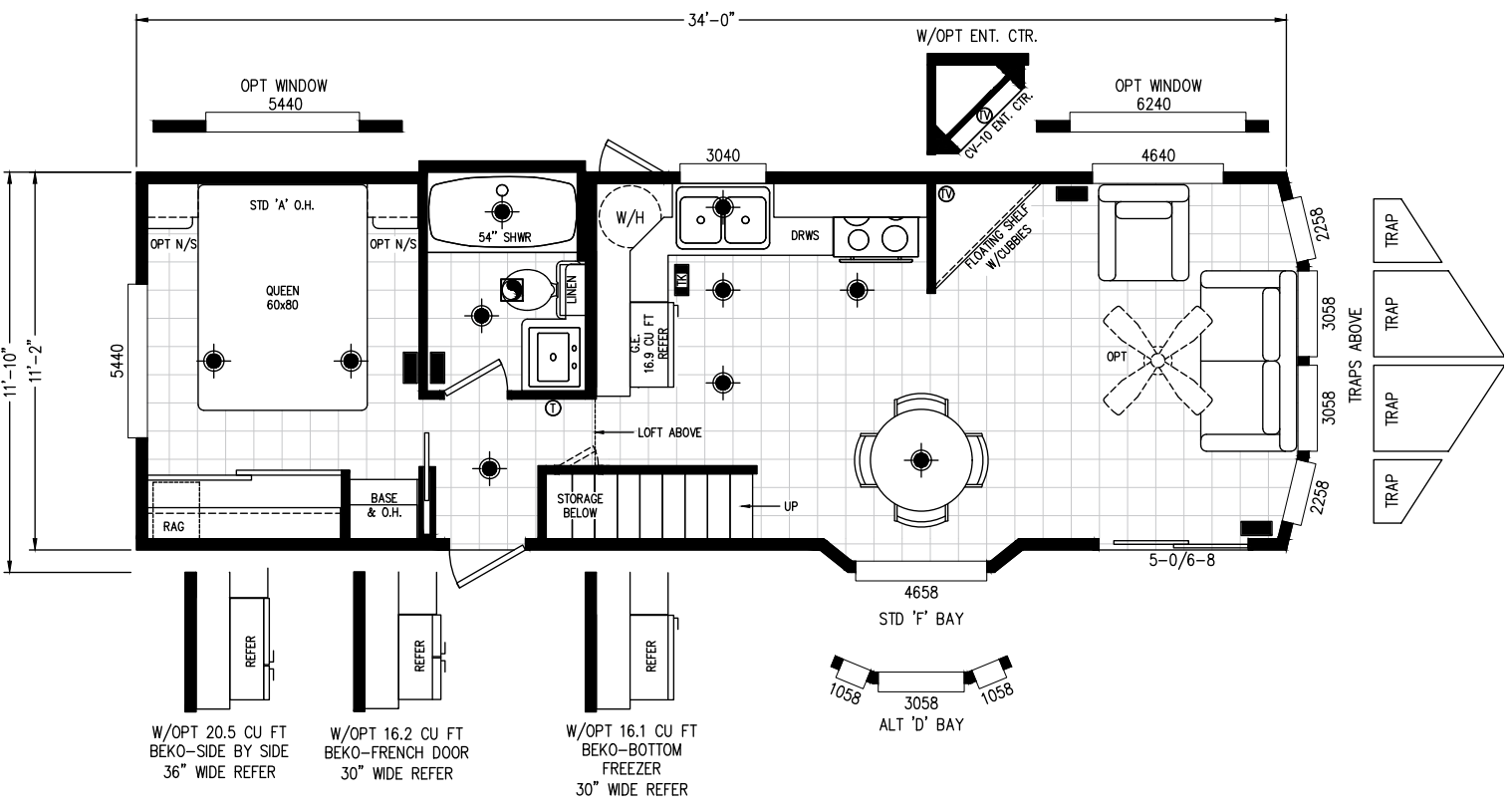
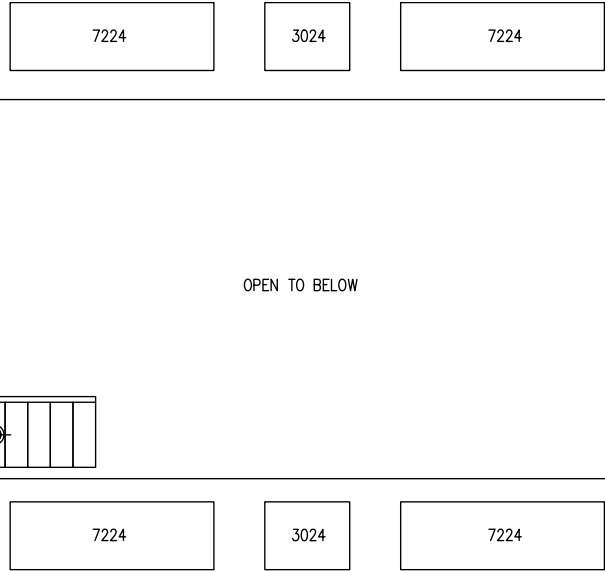
ENTRANCE

1 / 1 / 399

11' 10" - 34' 0"

L Shaped

Side



- W/OPT 20.5 CU FT BEKO-SIDE BY SIDE 36" WIDE REFER
- W/OPT 16.2 CU FT BEKO-FRENCH DOOR 30" WIDE REFER
- W/OPT 16.1 CU FT BEKO-BOTTOM FREEZER 30" WIDE REFER

ALPINE LOFTS SERIES

120AL11351B

BEDS / BATHS / SQFT

BOX SIZE

KITCHEN STYLE

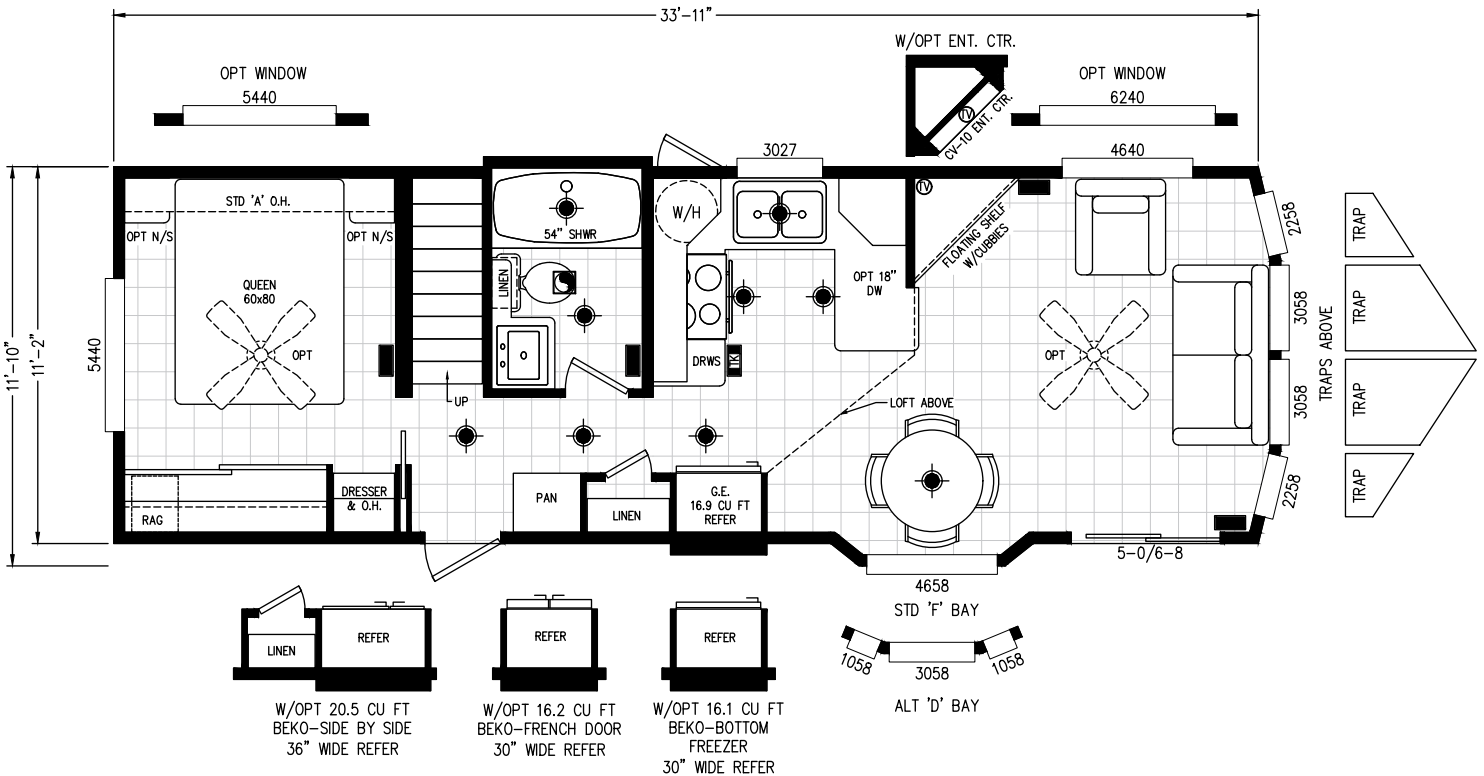
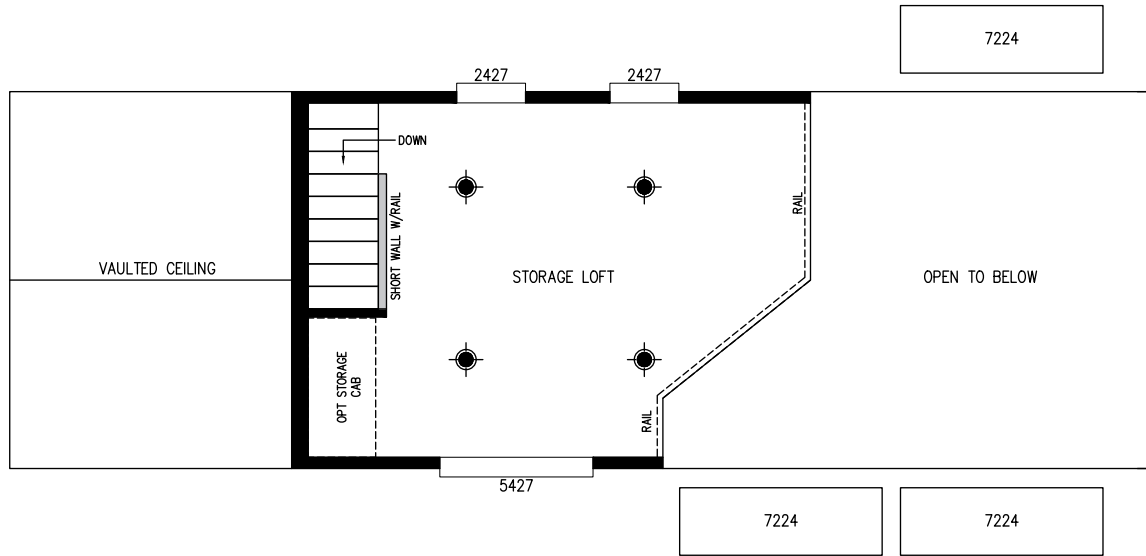
ENTRANCE

1 / 1 / 399

11' 10" - 33' 11"

U

Side



ALPINE LOFTS SERIES

120AL11351C

BEDS / BATHS / SQFT

BOX SIZE

KITCHEN STYLE

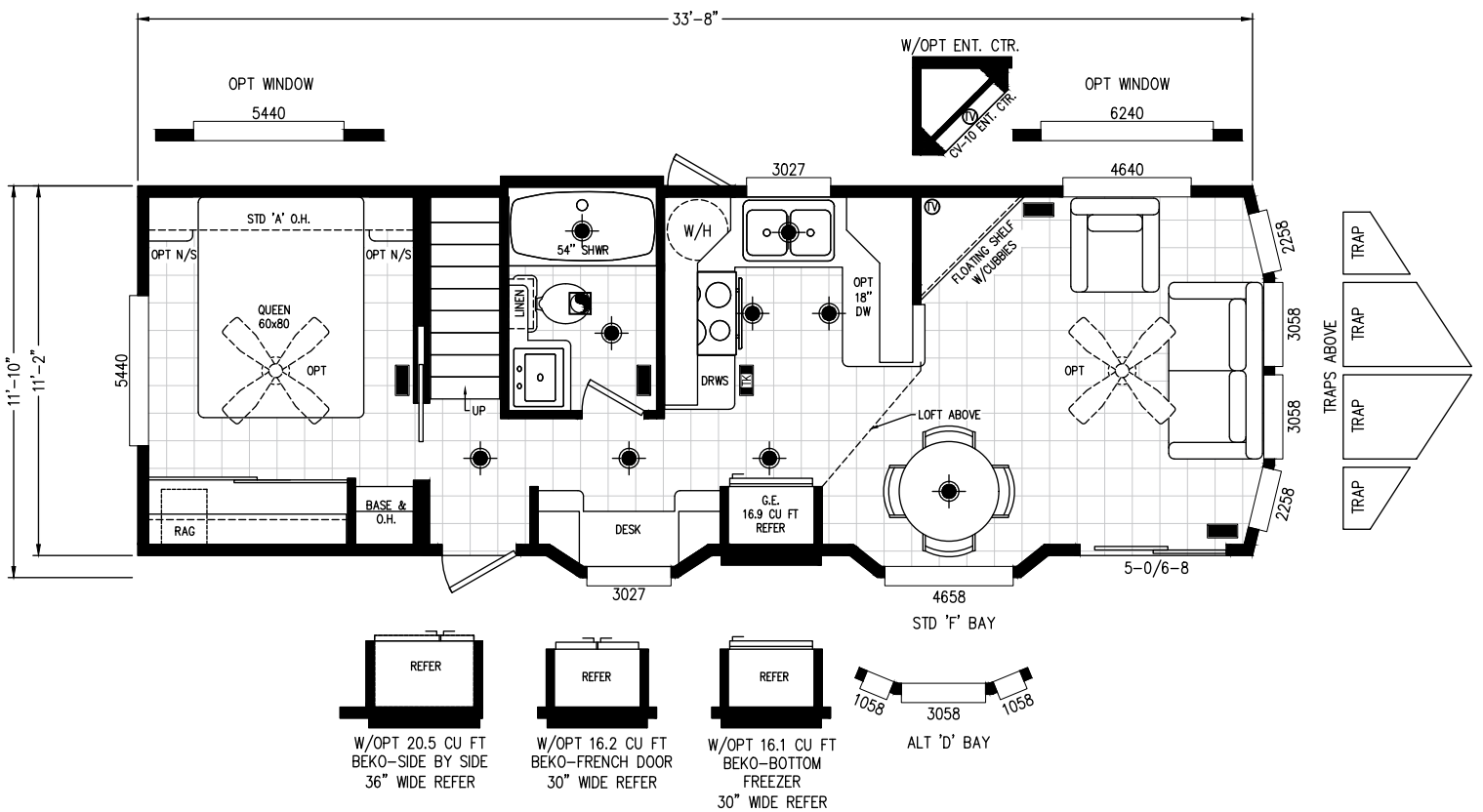
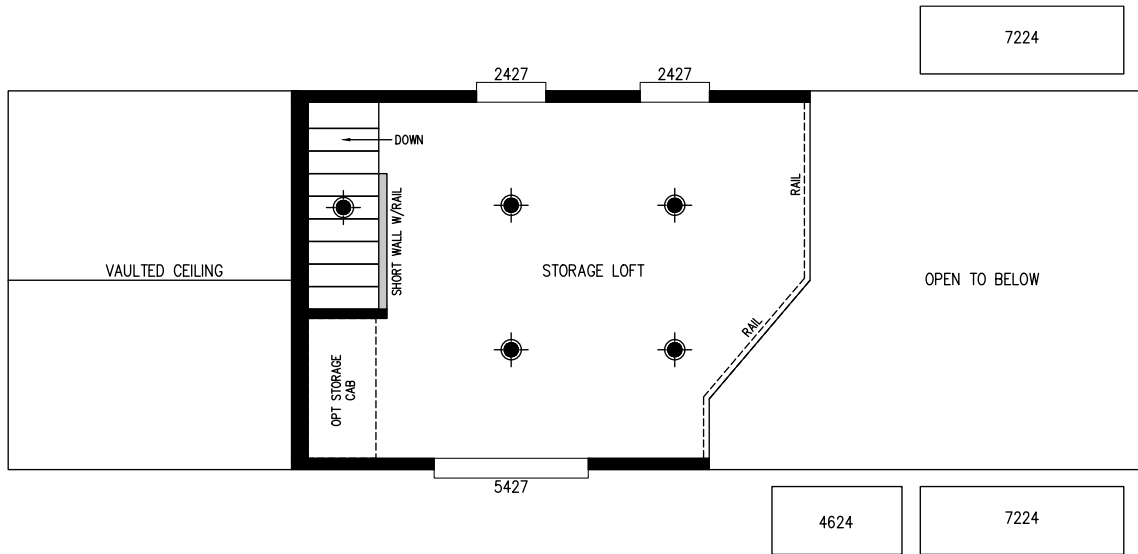
ENTRANCE

1 / 1 / 399

11' 10" - 33' 8"

U

Side



ALPINE LOFTS SERIES

120AL11351D

BEDS / BATHS / SQFT

BOX SIZE

KITCHEN STYLE

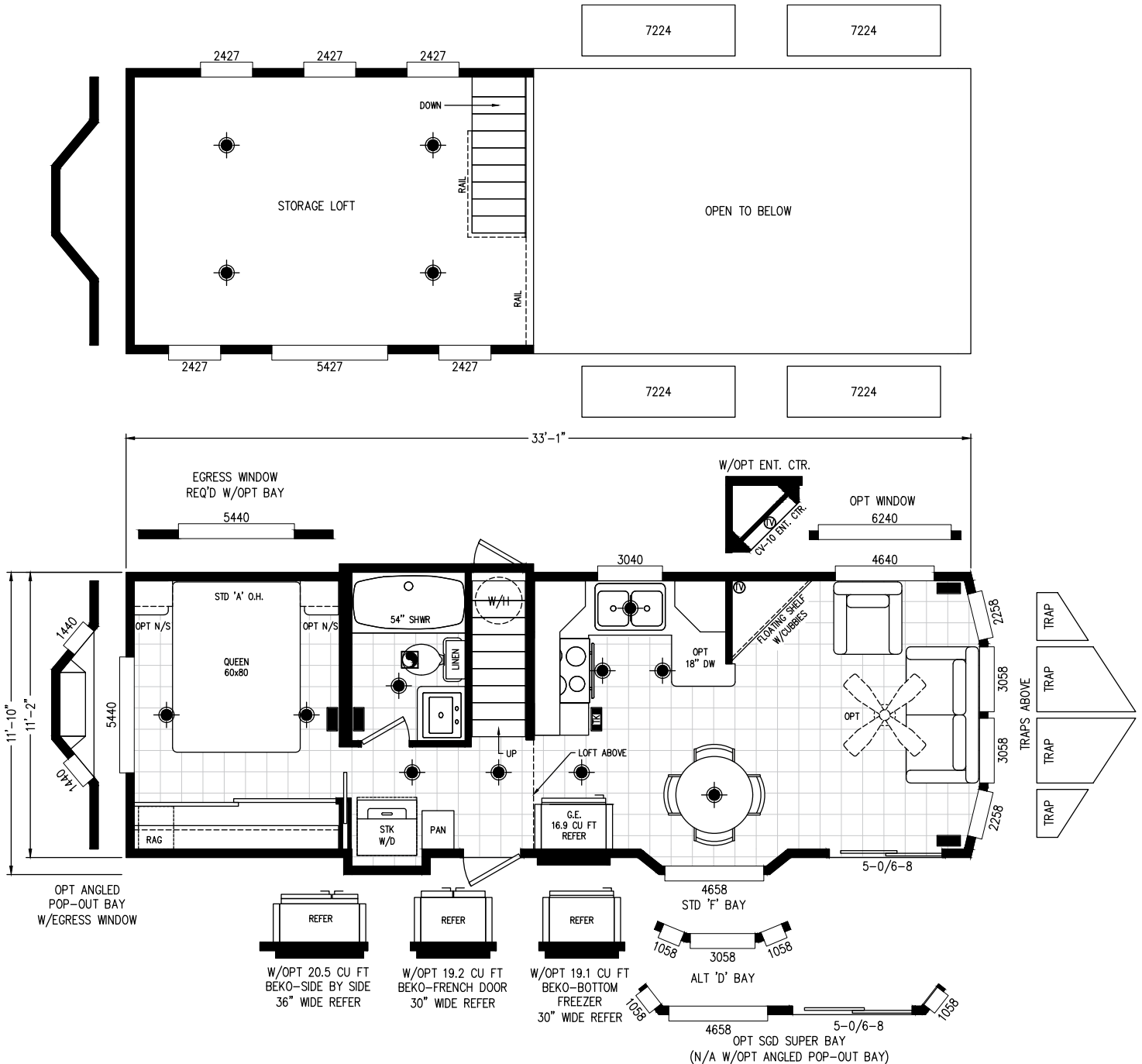
ENTRANCE

1 / 1 / 399

11' 10" - 33' 1"

U

Side



ALPINE LOFTS SERIES

120AL11351E

BEDS / BATHS / SQFT

BOX SIZE

KITCHEN STYLE

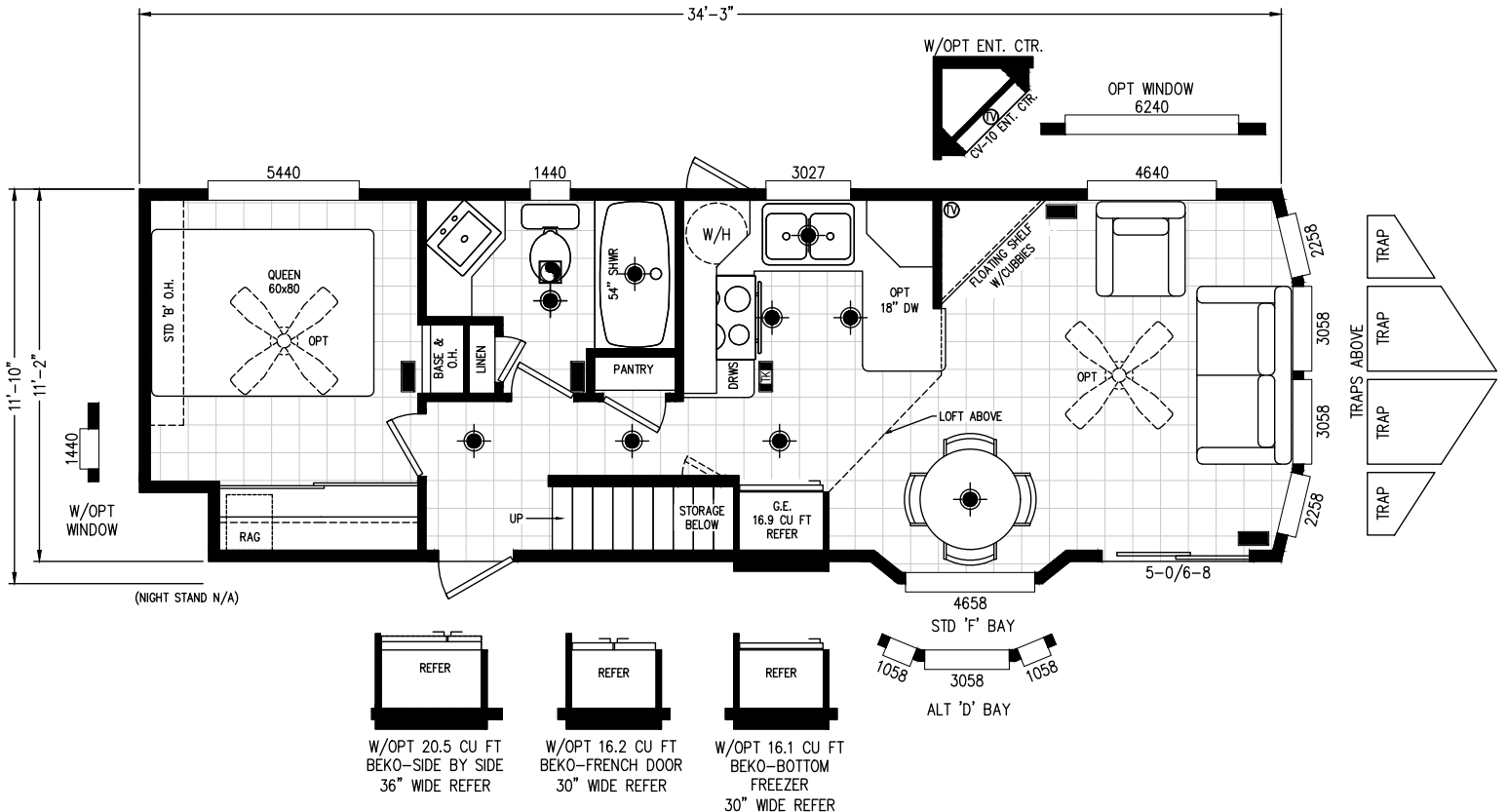
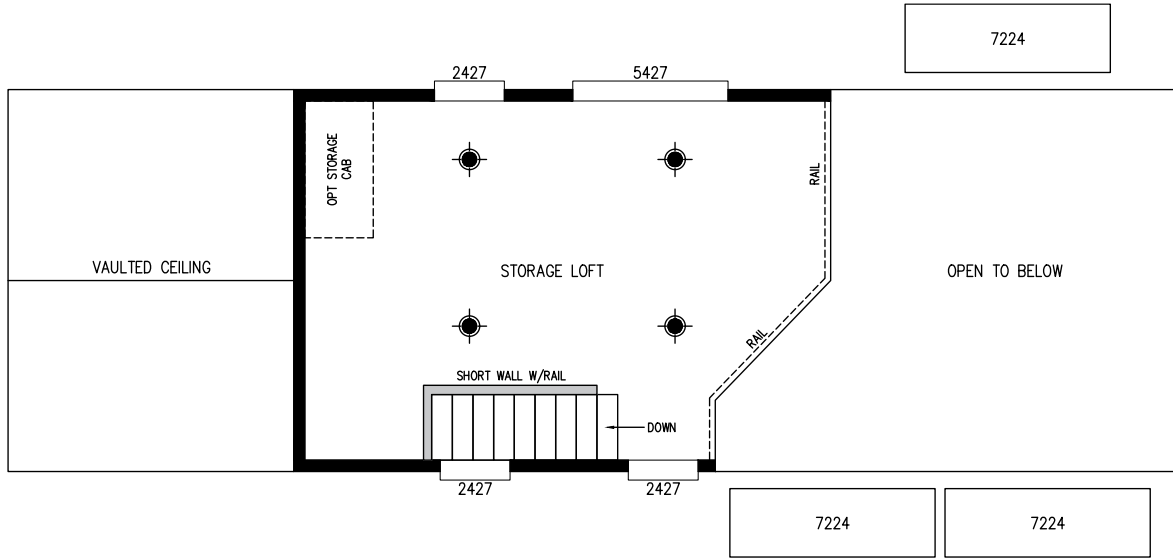
ENTRANCE

1 / 1 / 399

11' 10" - 34' 3"

U

Side



ALPINE LOFTS SERIES

120AL11351F

BEDS / BATHS / SQFT

BOX SIZE

KITCHEN STYLE

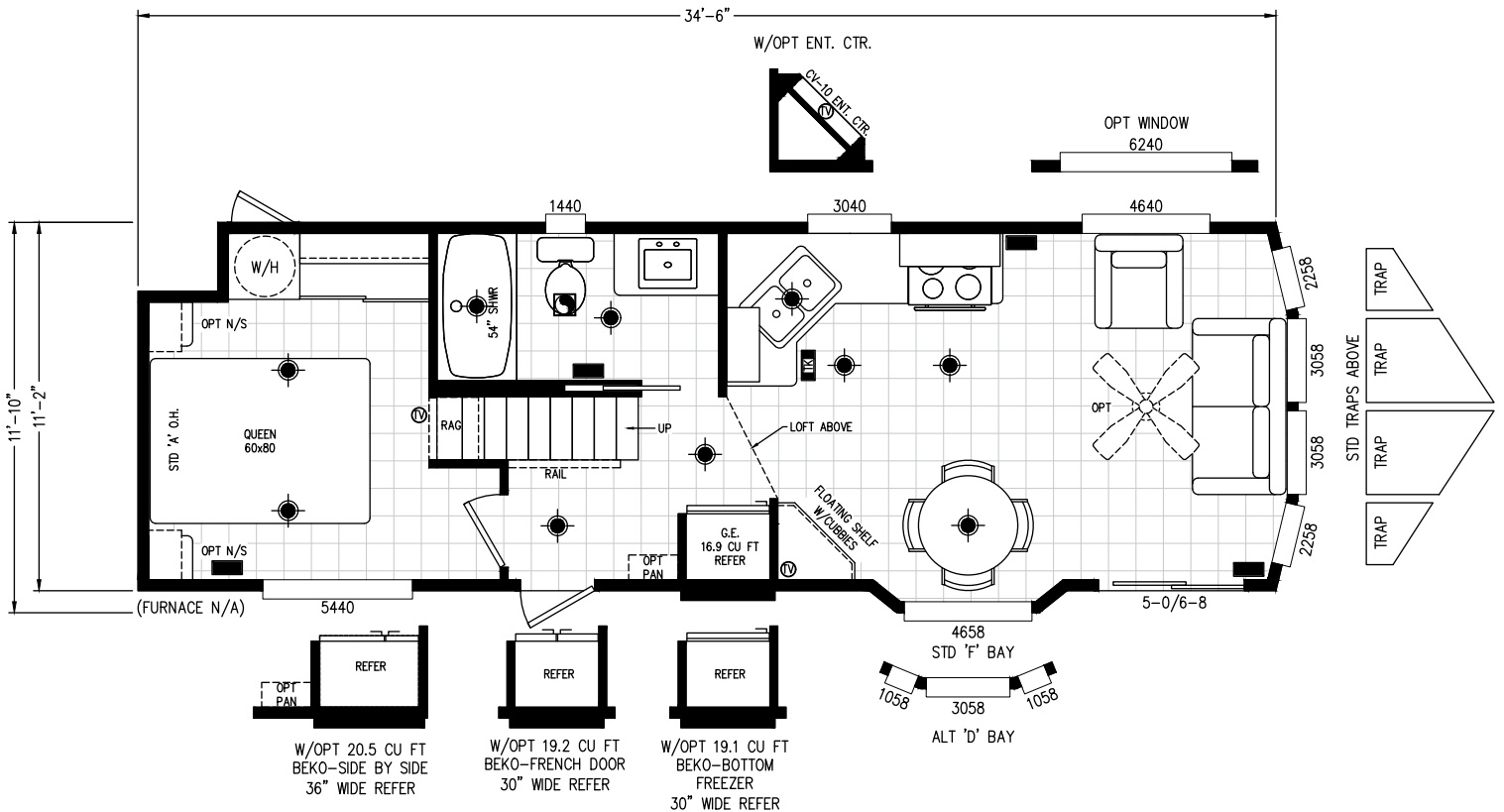
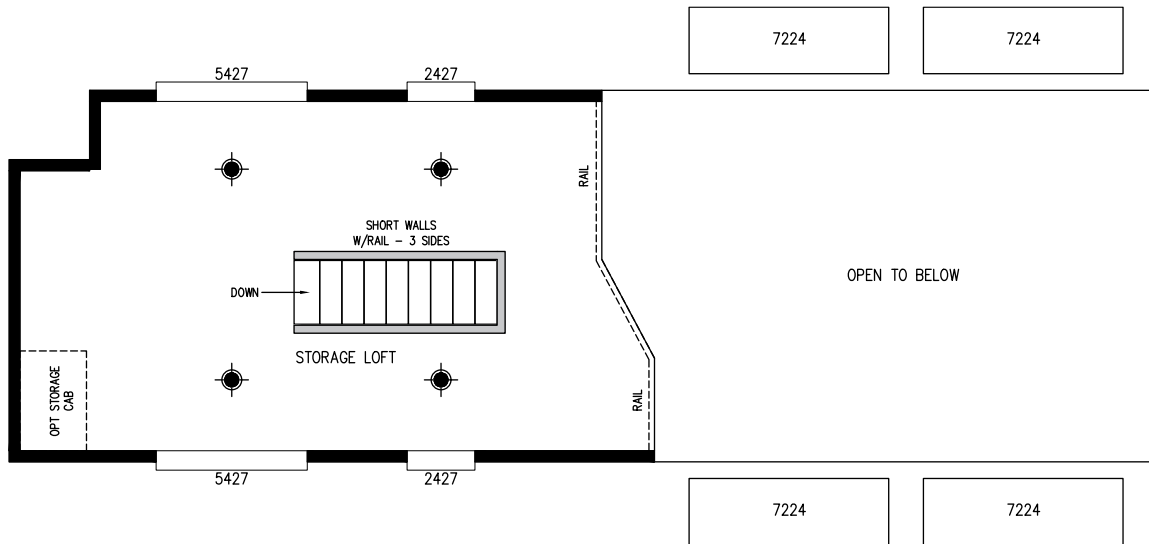
ENTRANCE

1 / 1 / 399

11' 10" - 34' 6"

L Shaped

Side



ALPINE LOFTS SERIES

120AL11351G

BEDS / BATHS / SQFT

BOX SIZE

KITCHEN STYLE

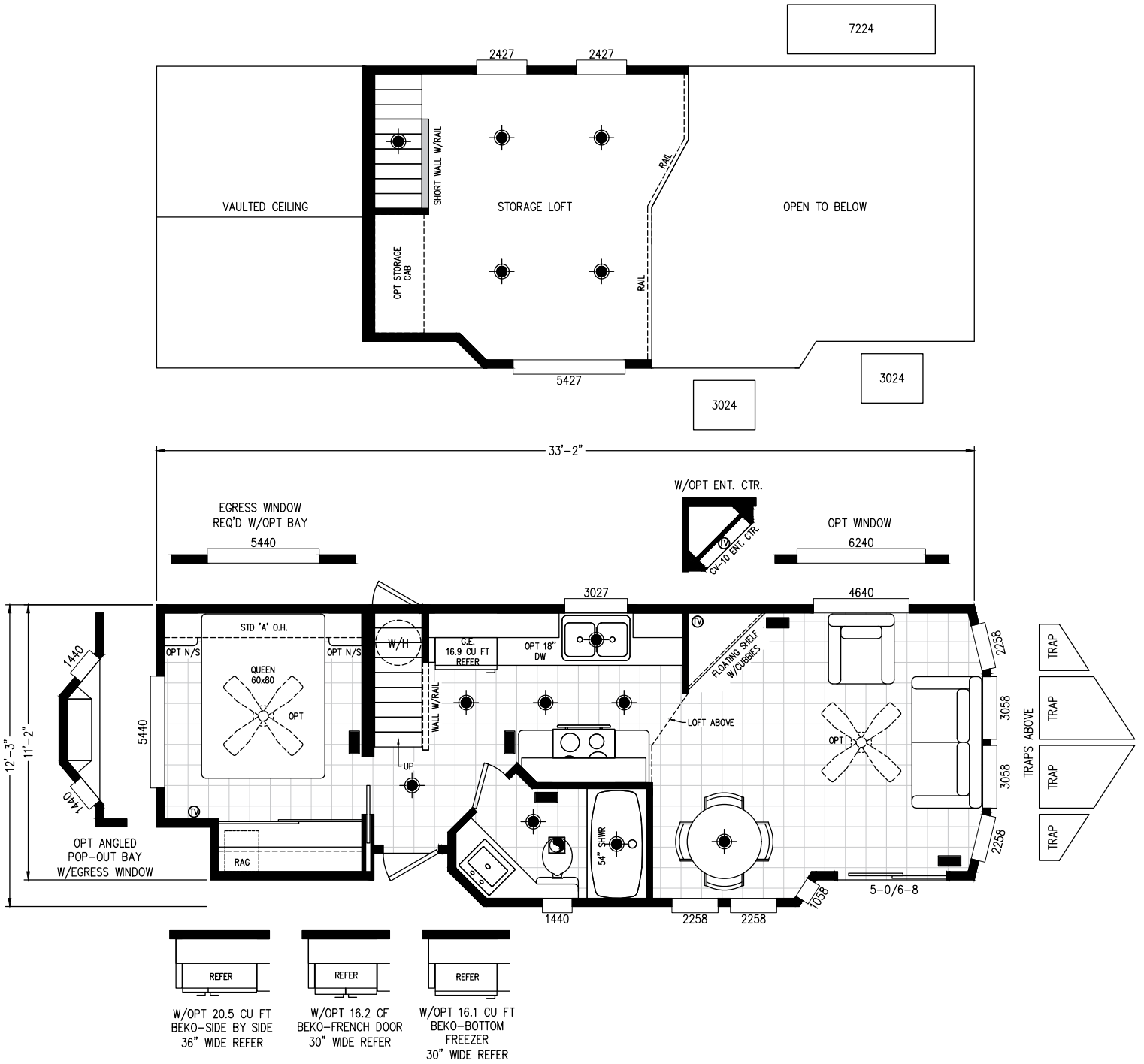
ENTRANCE

1 / 1 / 399

12' 3" - 33' 2"

Carousel

Side



ALPINE LOFTS SERIES

120AL11351H

BEDS / BATHS / SQFT

1 / 1 / 399

BOX SIZE

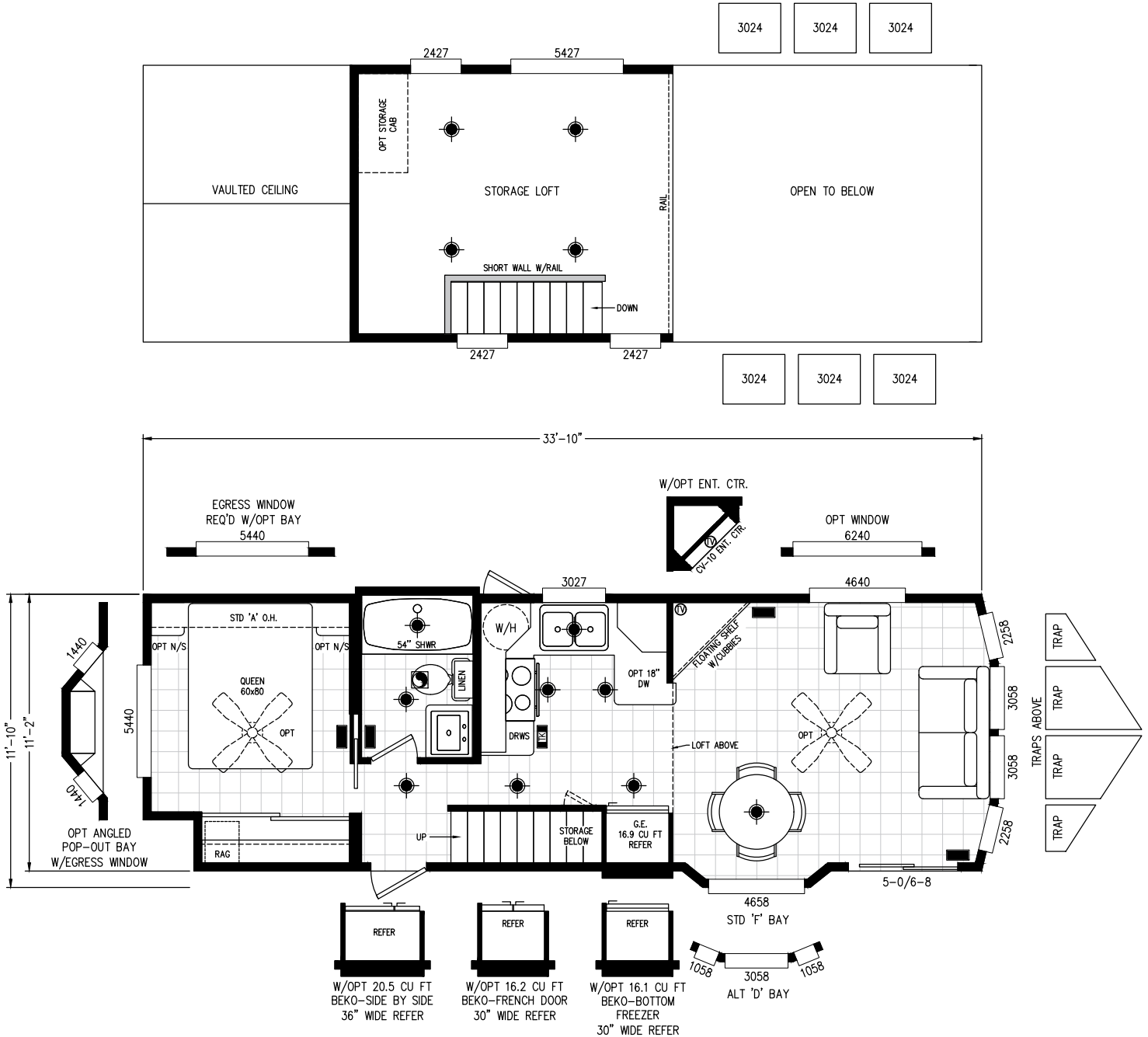
11' 10" - 33' 10"

KITCHEN STYLE

U

ENTRANCE

Side



ALPINE LOFTS SERIES

120AL11351J

BEDS / BATHS / SQFT

1 / 1 / 399

BOX SIZE

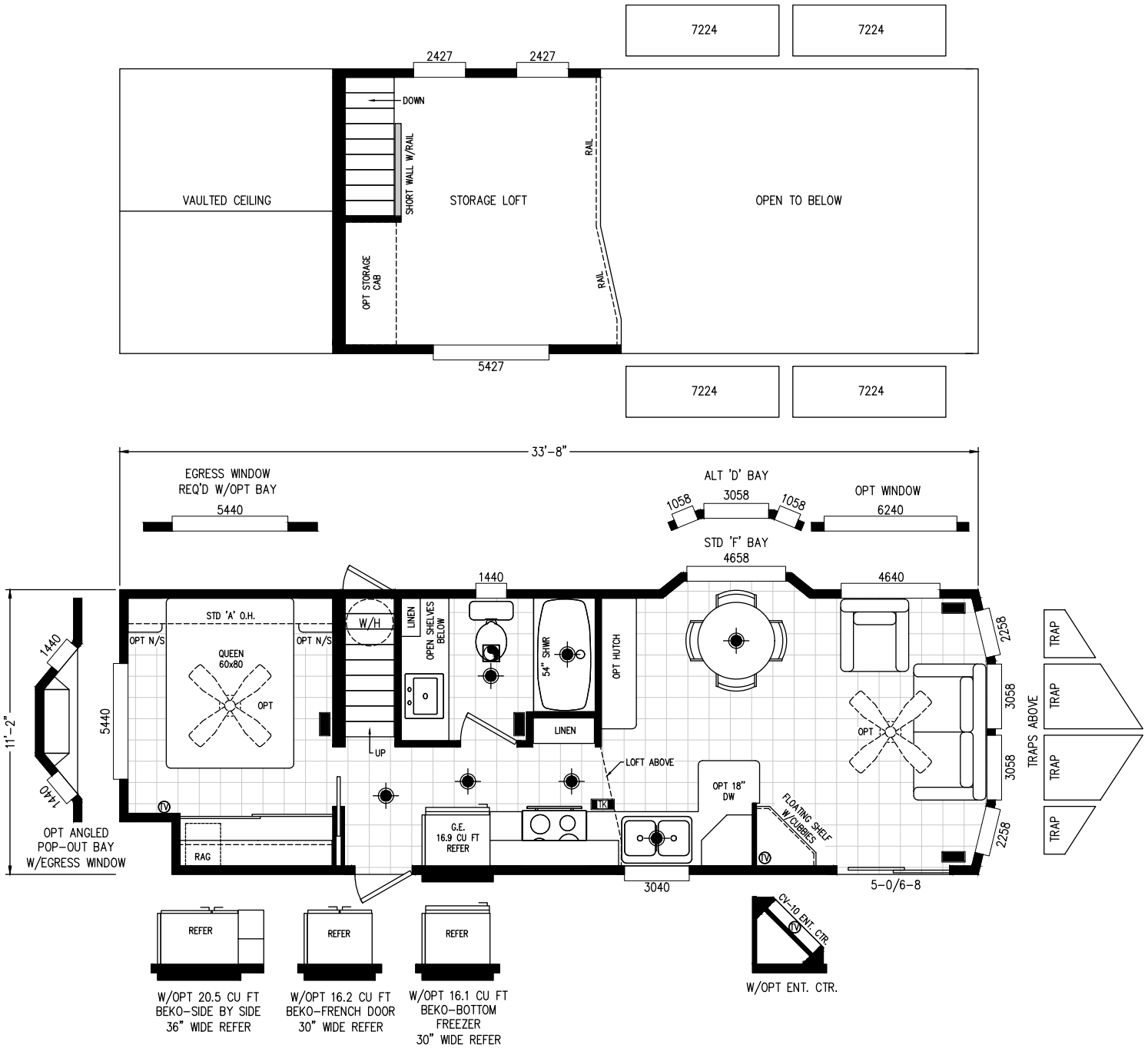
11' 2" - 33' 8"

KITCHEN STYLE

Galley

ENTRANCE

Side



ALPINE LOFTS SERIES

120AL11351L

BEDS / BATHS / SQFT

BOX SIZE

KITCHEN STYLE

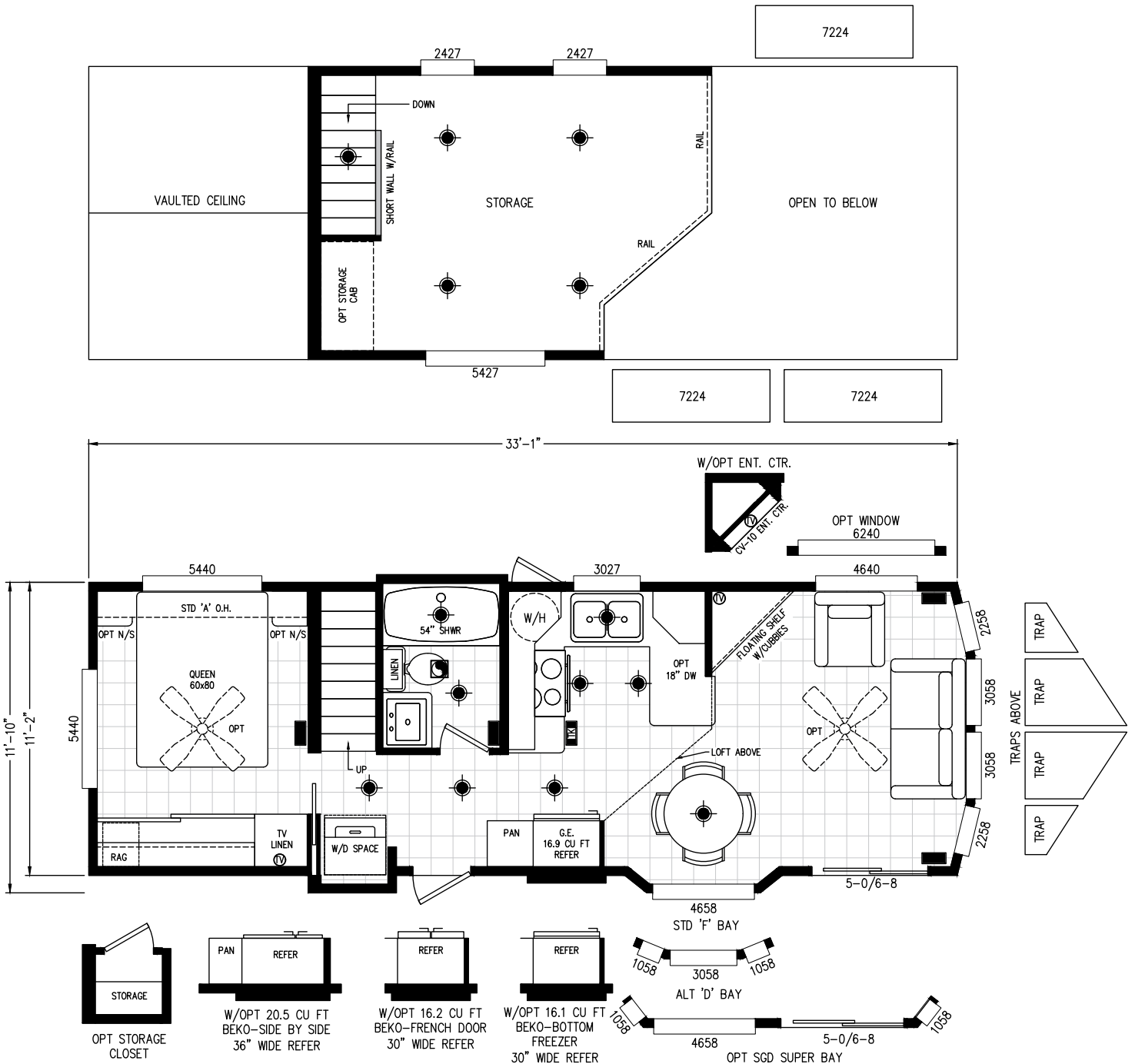
ENTRANCE

1 / 1 / 399

11' 10" - 33' 1"

U

Side



ALPINE LOFTS SERIES

120AL11351M

BEDS / BATHS / SQFT

BOX SIZE

KITCHEN STYLE

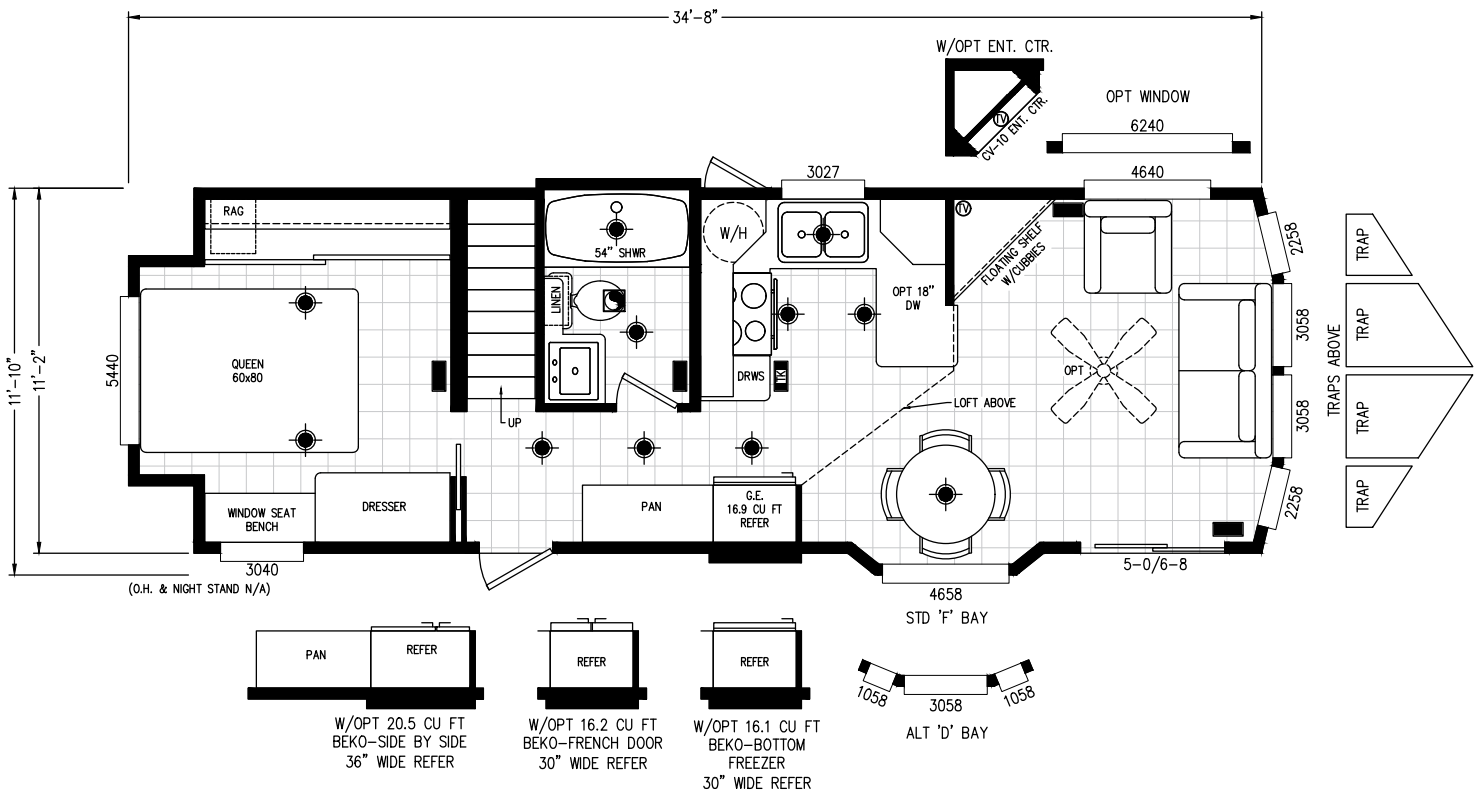
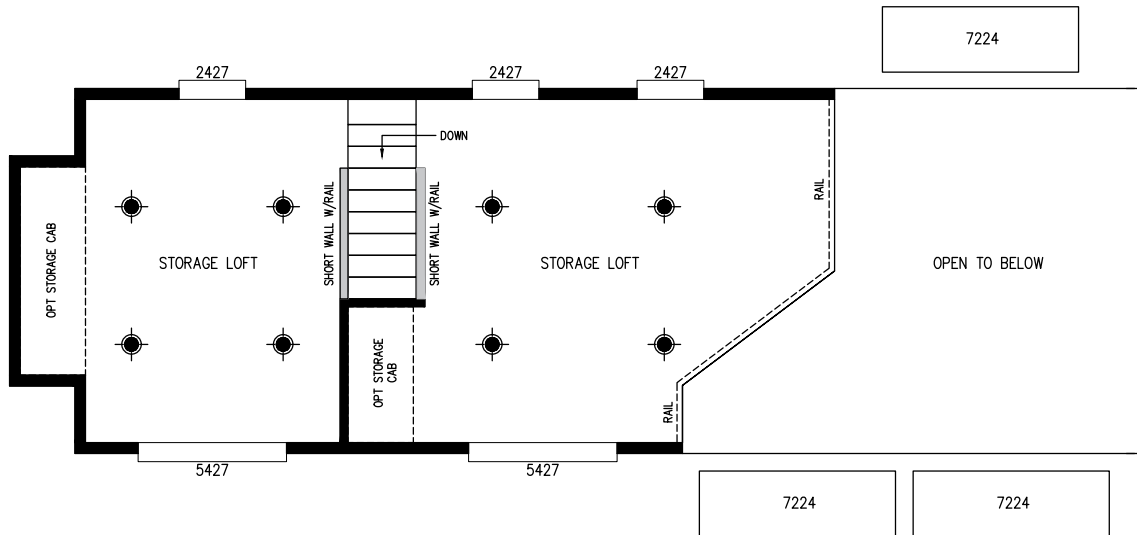
ENTRANCE

1 / 1 / 399

11' 10" - 34' 8"

U

Side



ALPINE LOFTS SERIES

120AL113510

BEDS / BATHS / SQFT

BOX SIZE

KITCHEN STYLE

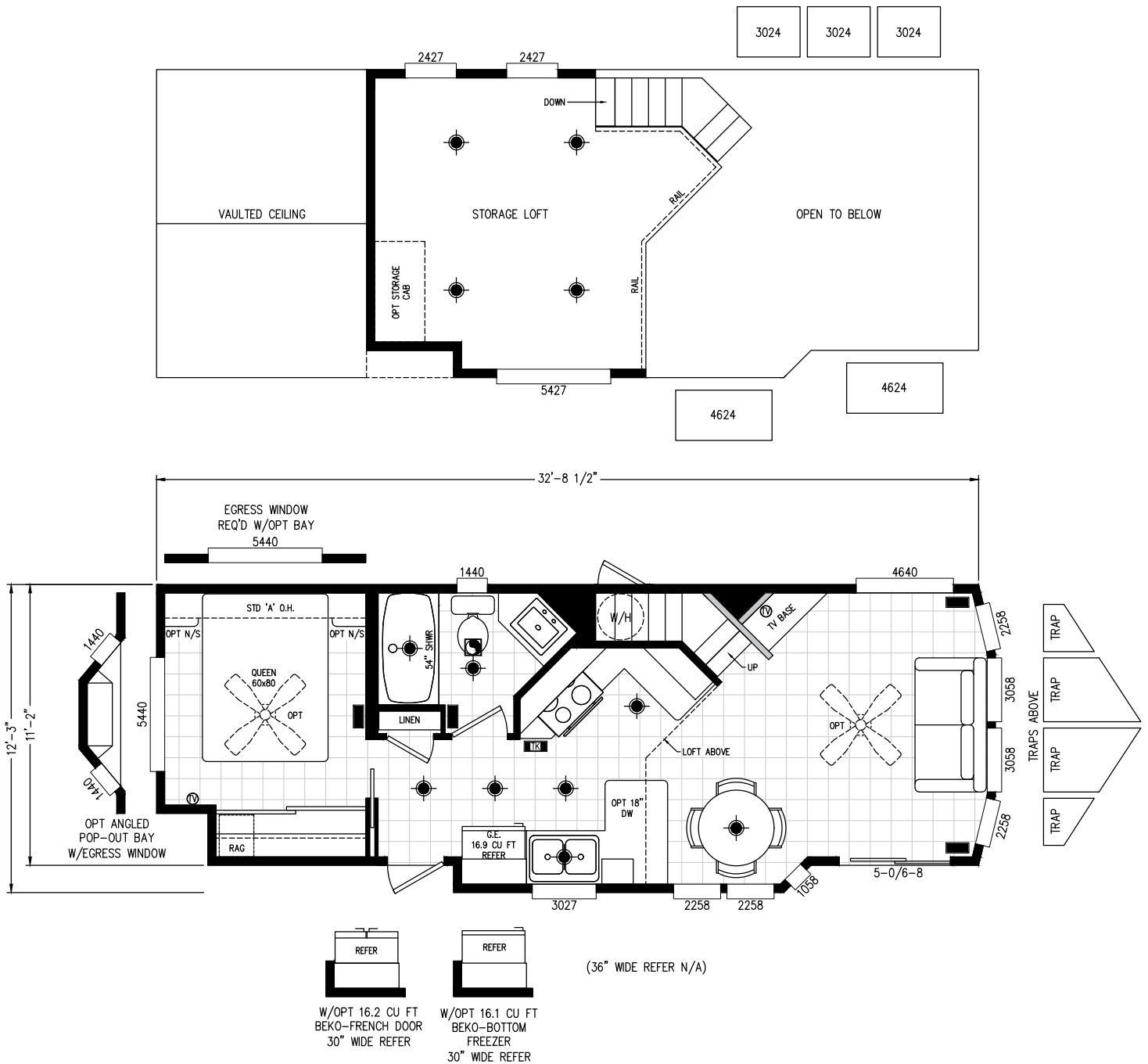
ENTRANCE

1 / 1 / 399

12' 3" - 32' 8.5"

Alley Galley

Side



ALPINE LOFTS SERIES

120AL11351P

BEDS / BATHS / SQFT

BOX SIZE

KITCHEN STYLE

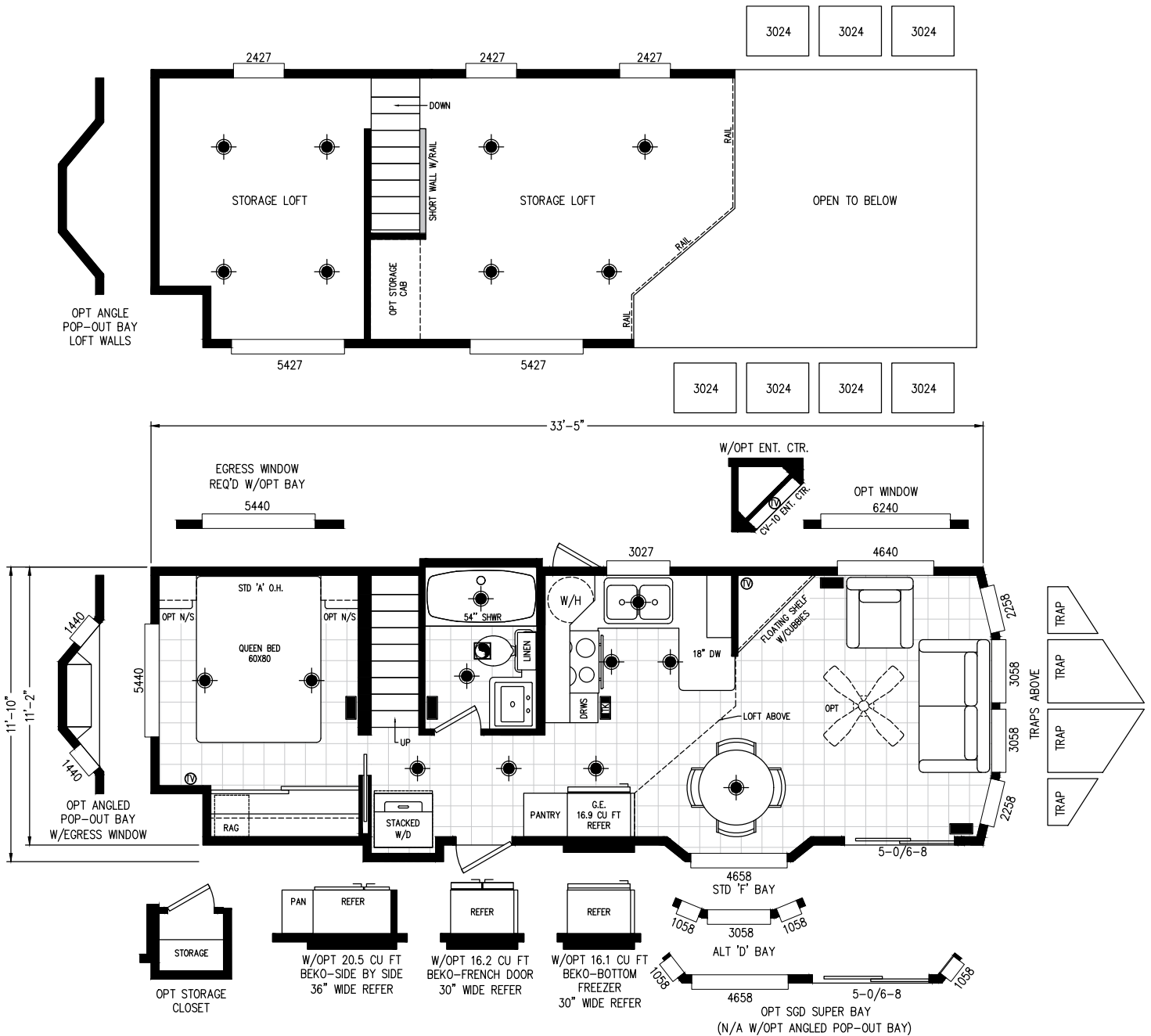
ENTRANCE

1 / 1 / 399

11' 10" - 33' 5"

U

Side



ALPINE LOFTS SERIES

120AL11351Q

BEDS / BATHS / SQFT

1 / 1 / 399

BOX SIZE

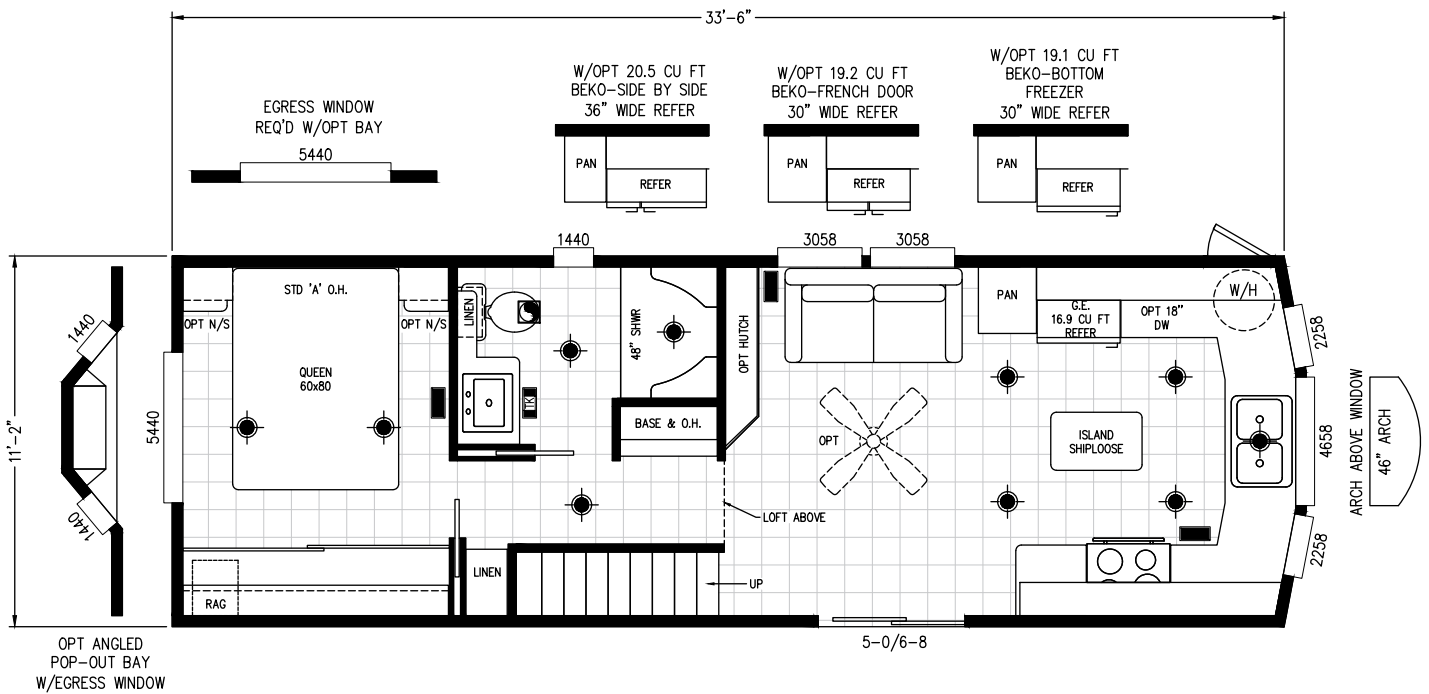
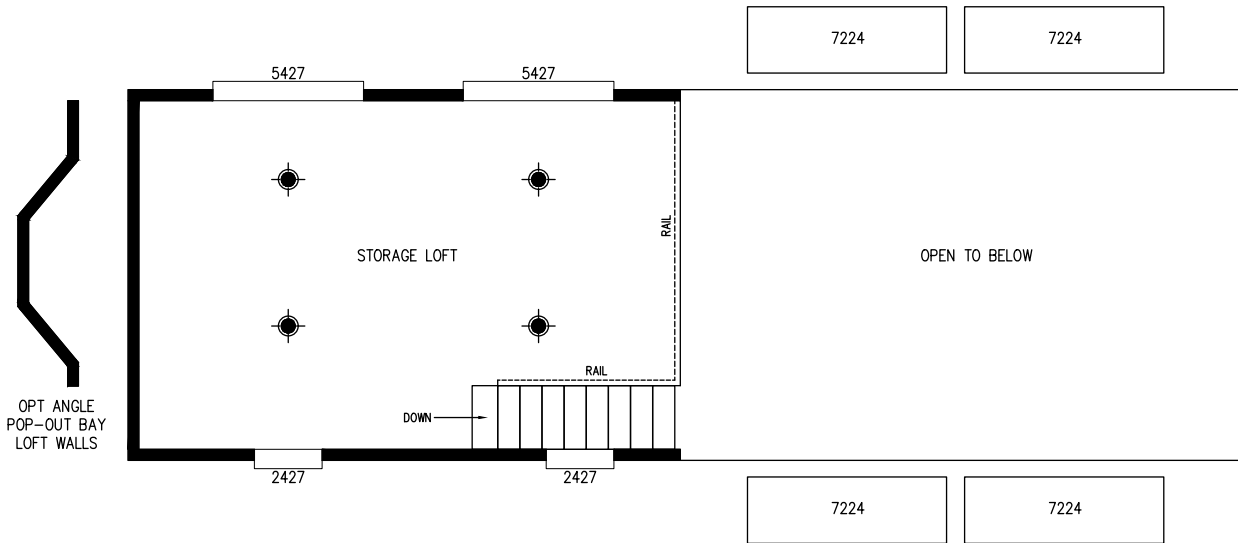
11' 2" - 33' 6"

KITCHEN STYLE

Horseshoe Front

ENTRANCE

Front w/ Porch



ALPINE LOFTS SERIES

120AL11351R

BEDS / BATHS / SQFT

BOX SIZE

KITCHEN STYLE

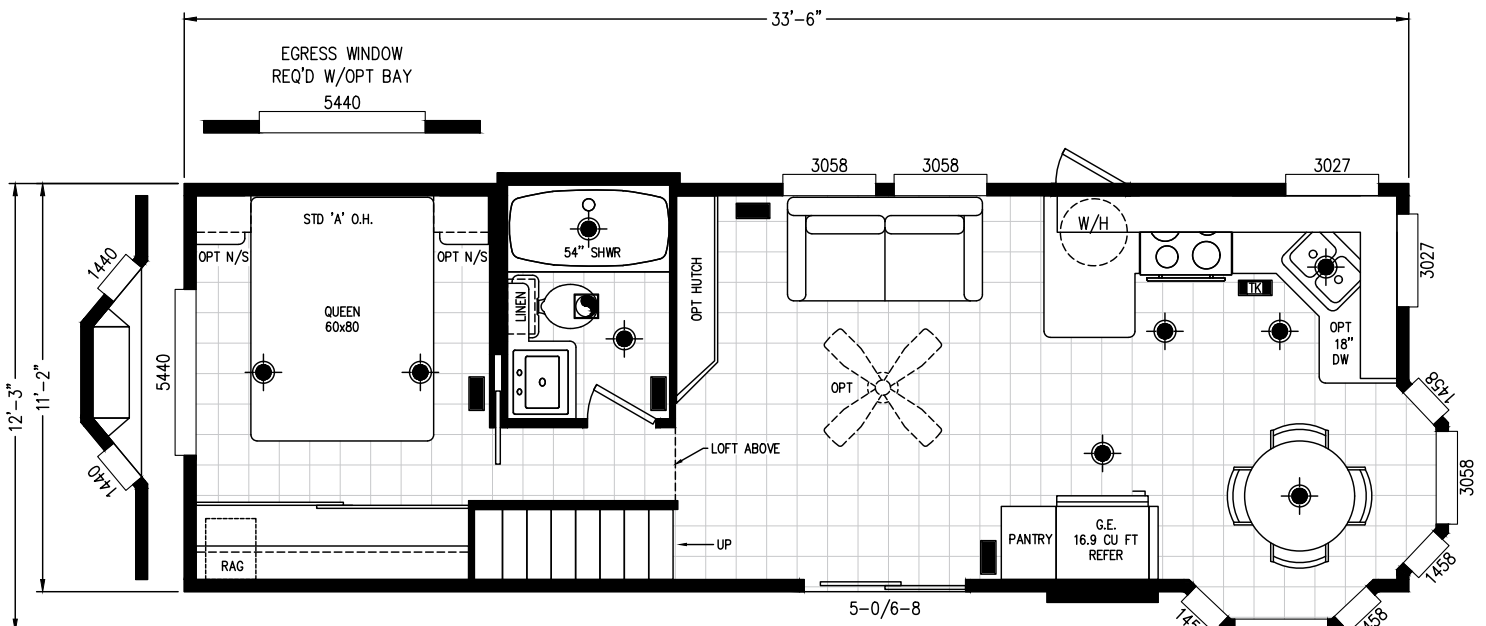
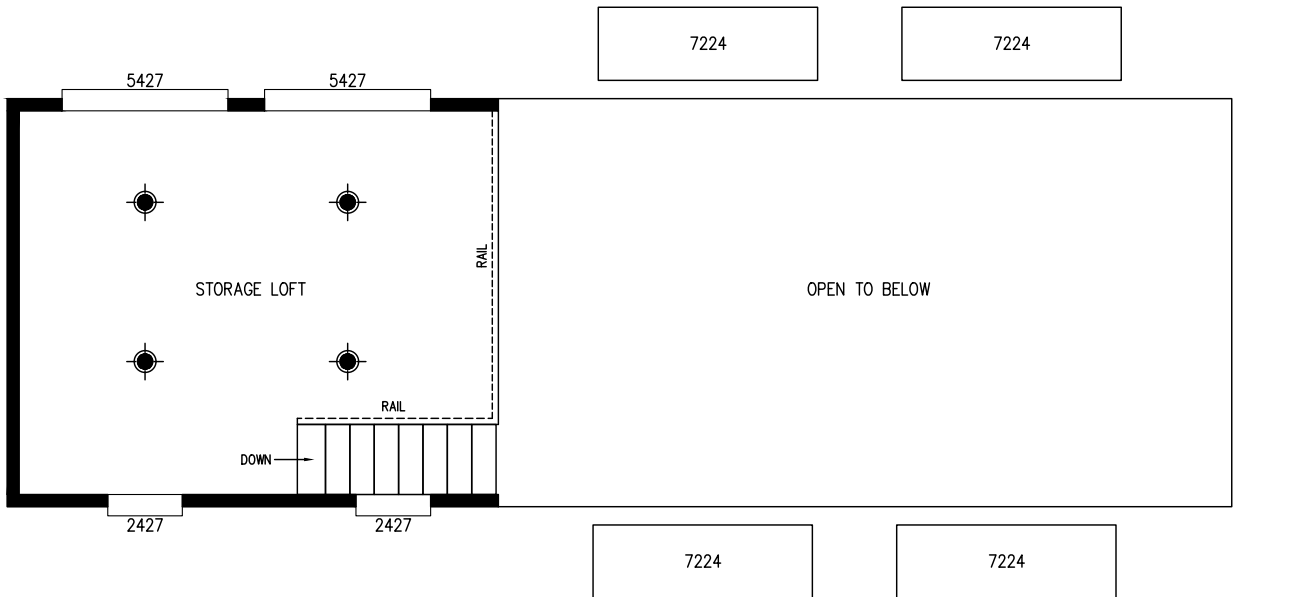
ENTRANCE

1 / 1 / 399

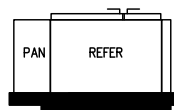
12' 3" - 33' 6"

Front

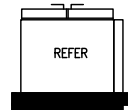
Front w/ Porch



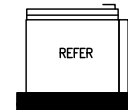
OPT ANGLED POP-OUT BAY W/EGRESS WINDOW



W/OPT 20.5 CU FT BEKO-SIDE BY SIDE 36" WIDE REFER



W/OPT 16.2 CU FT BEKO-FRENCH DOOR 30" WIDE REFER



W/OPT 16.1 CU FT BEKO-BOTTOM FREEZER 30" WIDE REFER

ALPINE LOFTS SERIES

CHOICES & OPTIONS

POPULAR OPTIONS

- Vinyl Plank Flooring throughout
- Beko Stainless Steel Appliances
- Solid Surface Countertops
- Full-Height Ceramic Tile Backsplash
- Kitchen Faucet Pulldown Sprayer
- 39" Overhead Cabinets
- Undermount Stainless or Farmhouse Sink
- Enclosed Shower with Full Shower Tile
- Solid Surface Countertops
- Metal Roof - Galvanized
- Tankless Water Heater - Gas
- Ceiling Fans in Living and Bedroom

DECOR CHOICES

We offer decor choices including flooring, tile backsplash, countertops, paint choices and much more.



PREMIUM APPLIANCES

We are proud to offer Beko industry-leading appliances.



FLOOR PLAN OPTIONS

- Extended Bays
- Stack Windows
- Entertainment Centers
- Storage Cabinets
- Front Porch
- Front Entrance

NAME BRAND MATERIALS



ALPINE LOFTS SERIES

STANDARD FEATURES

INTERIOR

- * Loft Height with Stack Windows
- * White interior passage doors
- * Tape and textured walls T/O with rounded corners
- * White interior paint throughout
- * Basic TV Shelf
- “Latitude Series” flat Interior door lever hardware
- 2” White Faux blinds throughout *except stack windows
- Congoleum Lino floor covering throughout
- 4” can lighting throughout *bulbs not included
- Smoke detector and fire extinguisher
- LP Leak Gas Detector

KITCHEN

- * Black 30” gas range with coil burners
- * Black 16.9 cu. ft. double door frost free refrigerator
- * Black 30” range hood with exhaust fan and light
- * Laminate countertops with 4” backsplash
- * Single lever kitchen faucet
- * Matching woodgrain overhead cabinet interiors
- Hardwood cabinet doors
- Small profile cove molding on cabinet overheads
- Residential style cabinet door handles and pulls
- Drawers with double steel roller guides
- Hidden cabinet door hinges
- Stainless steel kitchen sink

BED & BATH

- * Choice of fiberglass one piece tub/shower or shower only
- * Laminate countertops with self edge
- * 4” laminate backsplash
- Square white drop-in lavy sink
- Residential grade and style bathroom faucet
- Residential grade and style tub diverter with shower head
- Recessed medicine cabinet on side or front of lavy
- Satin towel bar and tissue holder
- Full width wardrobe with mirrored sliding doors
- Egress bedroom window

EXTERIOR

- * Front Endwall with Pents & Trap Above
- * Horizontal 9” Lap siding
- * 10” Overhang on front and rear
- * 8” Eaves on sides
- Architectural shingled roof
- Rear door with window, mini blind, and deadbolt
- Exterior lights at each door
- White vinyl framed, low “E”, dual glaze windows
- White aluminum framed dual glaze sliding glass door
- Front eave overhang
- Exterior GFI receptacle by sliding glass door

MECHANICAL

- * 20-gallon fast recovery electric water heater with exterior access door
- * R-11 fiberglass floor insulation
- * R-11 fiberglass sidewall insulation
- * R-22 cellulose blown insulation
- PEX waterlines with low point drain
- UL. approved electrical devices throughout
- 50-amp exterior main panel service with 25’ supply cord
- Easy touch rocker light switches throughout
- Black iron gas pipe run to rear of unit
- Under sink waterline shut-off valves
- Interior water heater switch on electric water heater
- Pre-wire for ceiling fan in living room and bedroom

CONSTRUCTION

- Full 10” I-beam chassis construction
- Transverse 2” x 6” floor joists
- Detachable hitch from main chassis
- Woven simplex underbelly material
- 8’ x 12’ high density floor decking
- 2” x 4” sidewalls 16” O.C.
- Pre-engineered scissor trusses 16” O.C.
- 8-strand wire for on-site HVAC
- 30 gauge steel strapping for truss to sidewall and floor to sidewall strength
- RVIA / ANSI 119.5 approved

* Series Specific Standard Features

