

**PREFABULOUS CAVCO PARK MODEL RV'S**

# WEDGE SERIES



**FLOOR PLANS & STANDARD FEATURES**

| GOODYEAR, ARIZONA FACTORY

**Cavco**  
PARK MODELS & CABINS™





# WEDGE SERIES

---

## PARK MODEL RV'S

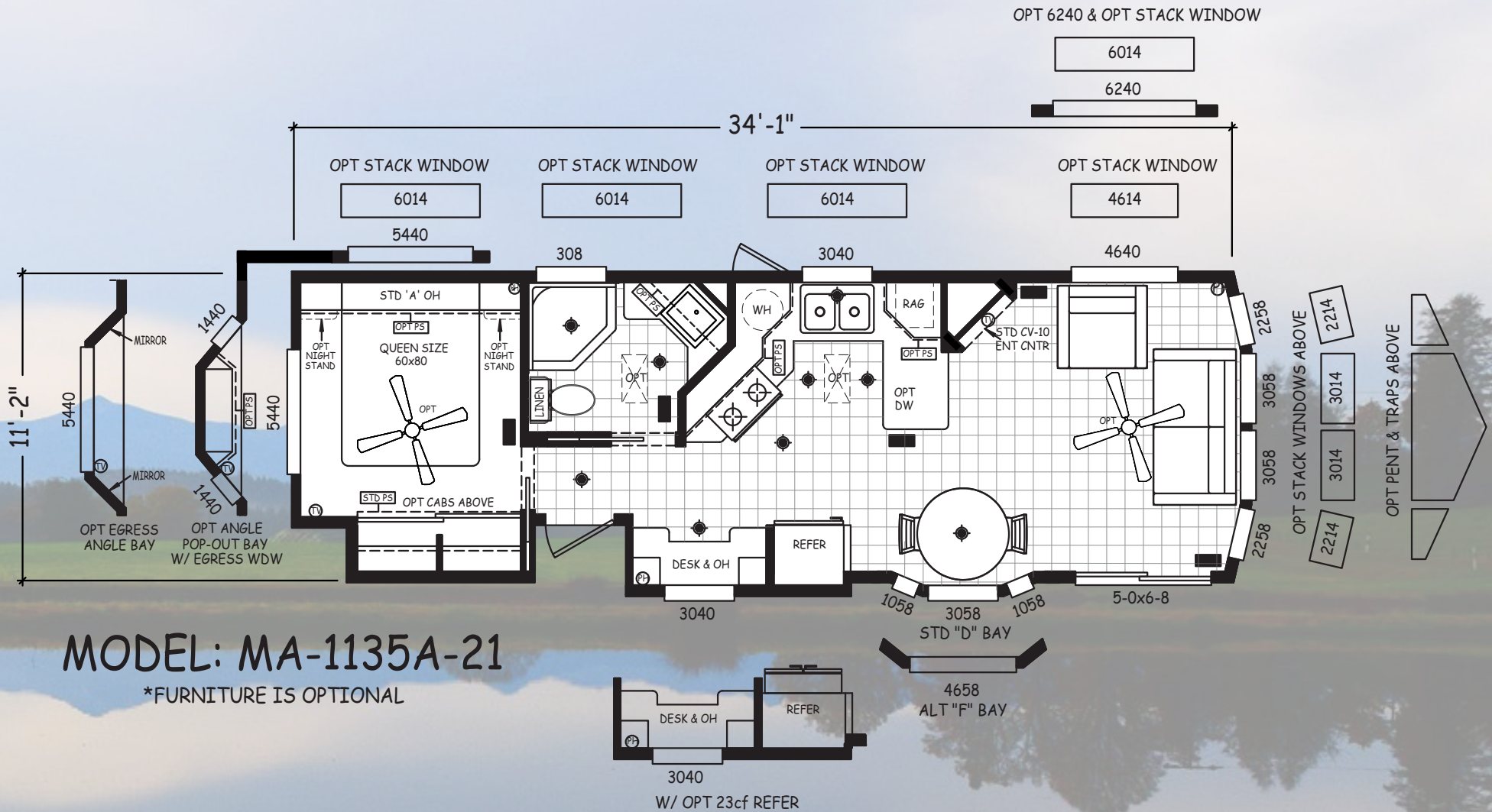


The Sedona Series park models by Cavco, is our entry level product line. High quality materials and craftsmanship is well assured. It offers seven standard floor plans to choose from. Kingston Brass faucets, and residential lighting fixtures are sure to bring a sense of home to our products. We have hardwood raised panel cabinet doors, pop-out bays, eight foot sidewalls, and a wide range of flooring options.

# WG-1134A-21 PM

Standard Height | 1-Bedroom | 14' 6" max height

Alley Galley Kit, Patio Dining, Hall Exit, 1-B/R, 6' Front Porch



## MODEL: MA-1135A-21

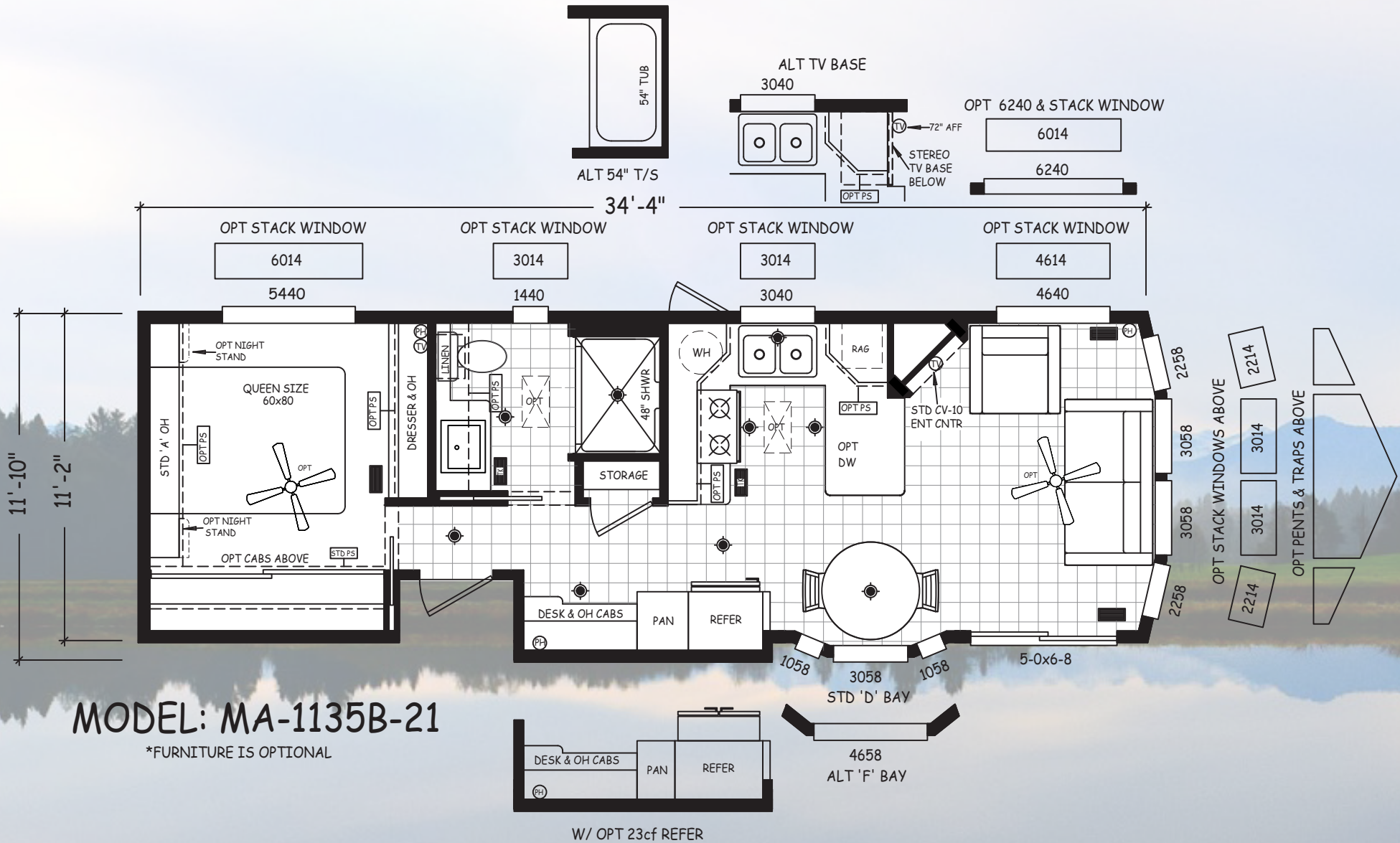
\*FURNITURE IS OPTIONAL



# WG-1134B-21 PM

Standard Height | 1-Bedroom | 14' 6" max height

Angled U-Shaped Kit, Patio Dining, Hall Exit, Hall Desk, 1-B/R, 6' Front Porch





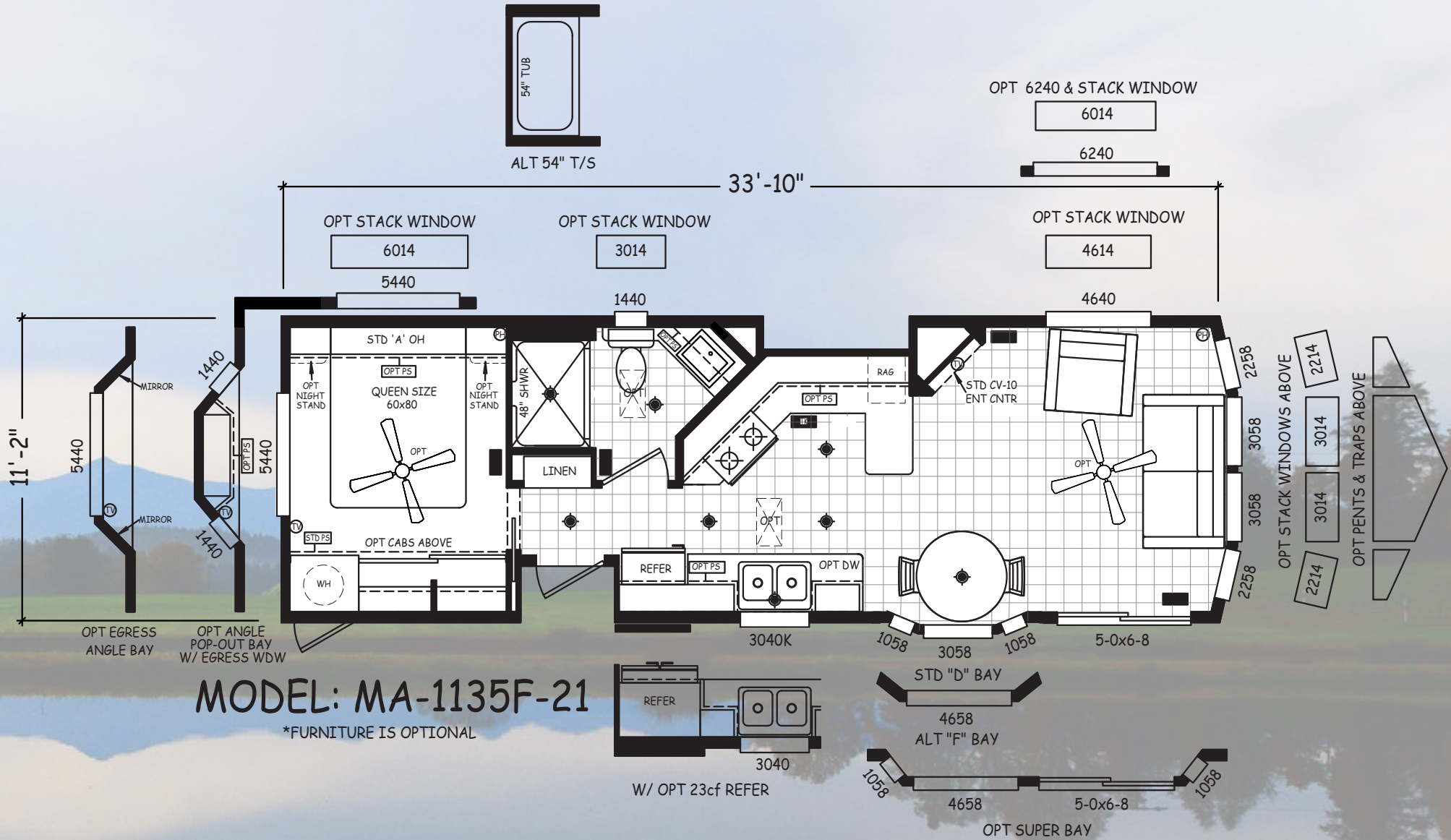




# WG-1134E-21 PM

Standard Height | 1-Bedroom | 14' 6" max height

Slant Galley Kit, Off-Patio Dining, Hall Exit, 1-B/R, 6' Front Porch



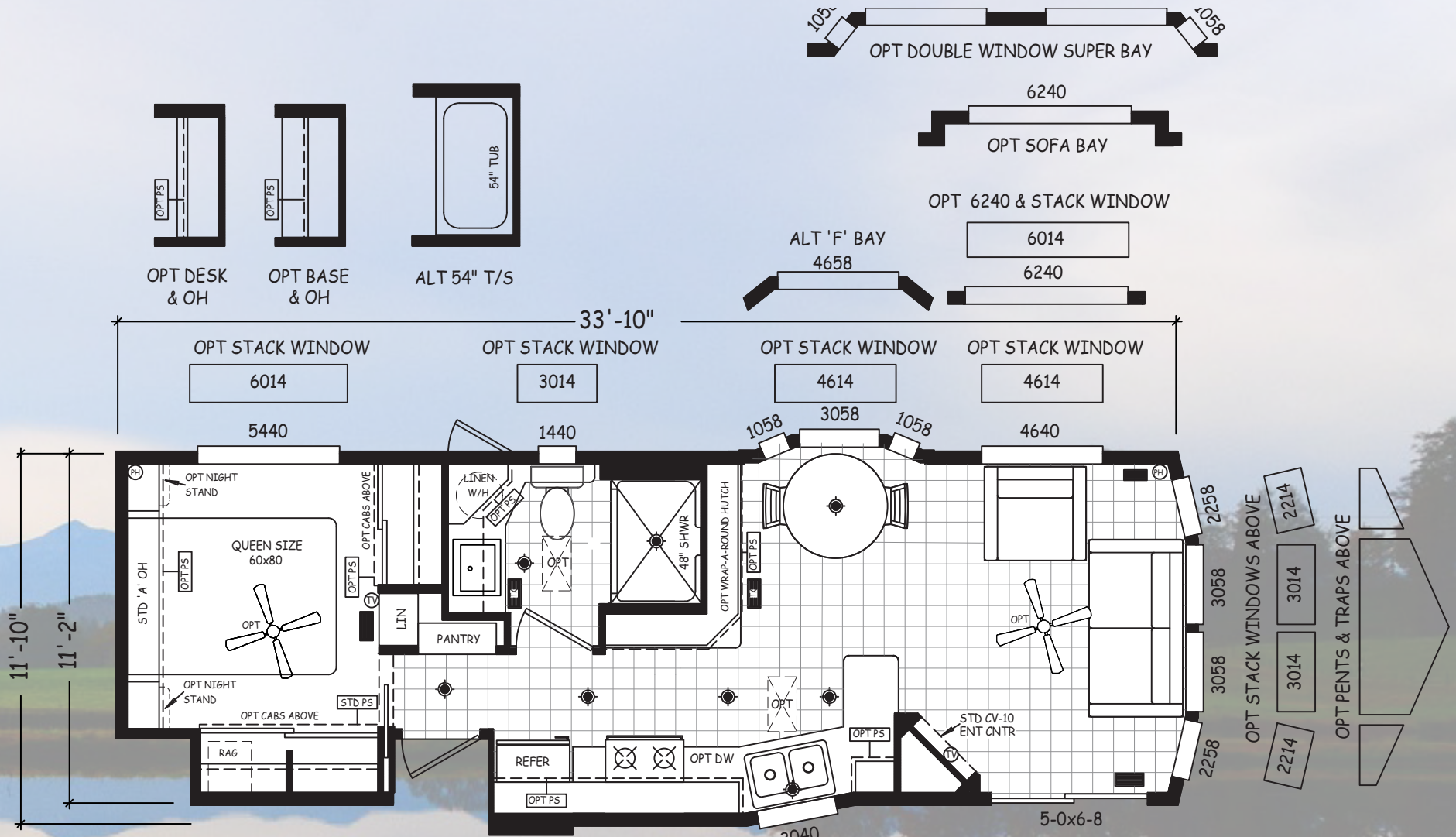




# WGLT-1135G-21PM

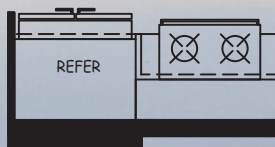
Super Size Height | Loft Multi Sleeper | 15' 10" max height

U-Shaped Kitchen, Patio Dining, Center Stairs



MODEL: MA-1135H-21

\*FURNITURE IS OPTIONAL



W/ OPT 23CF DEEED

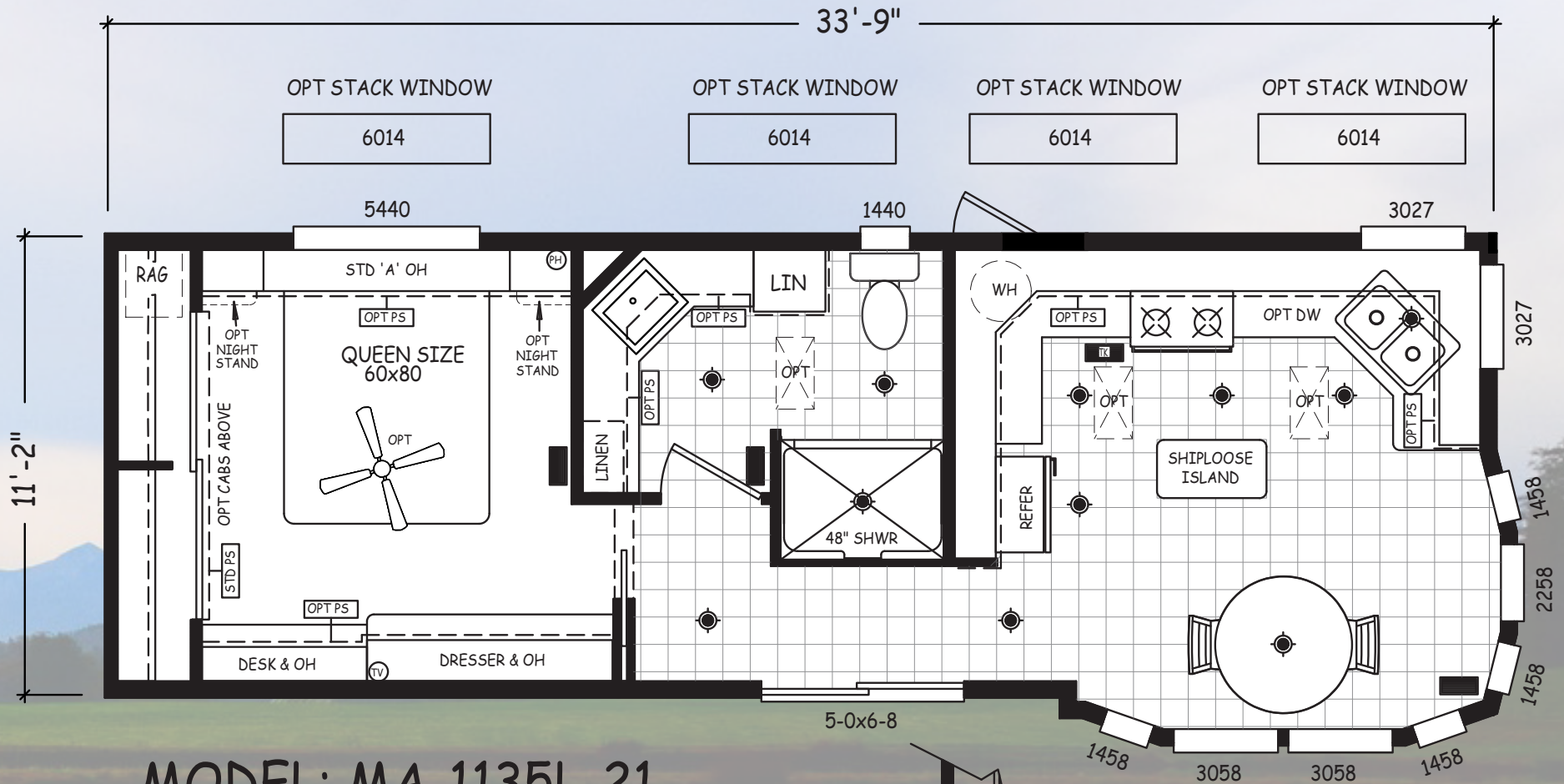




# WGLT-1135A-21PM

## Carousel Kitchen, Patio Dining, Hall Exit

Alley Galley Kit, Patio Dining, Hall Exit, 1-B/R, 6' Front Porch



MODEL: MA-1135L-21

\*FURNITURE IS OPTIONAL

W/ OPT 23cf REFER

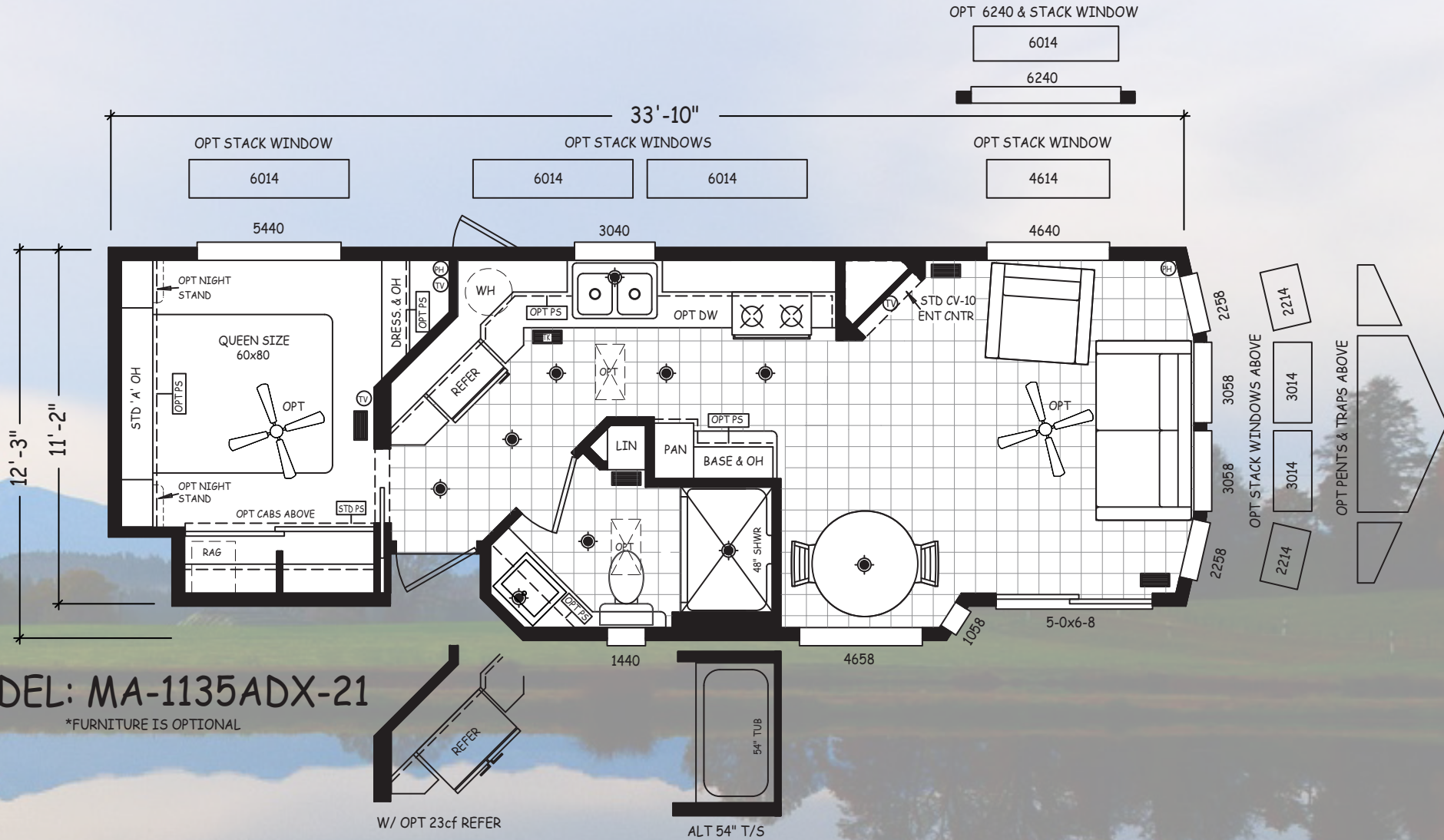




# WGLT-1135A-21PM

Super Size Height | Loft Multi Sleeper | 15' 10" max height

Alley Galley Shaped Kitchen, Patio Dining, Side Stairs



MODEL: MA-1135ADX-21

\*FURNITURE IS OPTIONAL

W/ OPT 23cf REFER

ALT 54" T/S

# WEDGE STANDARD FEATURES

## INTERIOR

- Tape and textured walls throughout with rounded corners
- "WEDGE" 14'6 High Side with flat ceiling (stack windows are optional)
- Built-in CV- entertainment tv center (see print for choices)
- Samsung Smart TV with SONOS Beam Sound Bar
- White raised panel interior passage doors
- Choice of and upgraded Drape Treatment w/Side Panels
- Linoleum throughout except the bedroom
- Shaw carpeting with padding and tack strip in bedroom
- White interior paint throughout
- 4" Recessed can lighting throughout
- Smoke detector and fire extinguisher
- LP Leak Gas Detector
- 'D' dining room bay (per floorplan)

## KITCHEN

- 30" Propane gas range (natural gas is available upon request)
- 16 cu. ft. double door frost free refrigerator
- 30" Spacesaver microwave oven (white or black)
- Hardwood raised panel cabinet doors
- Hardwood cabinet face frames
- Finished cabinet bottoms
- Large cove molding on cabinet overheads
- Upgraded cabinet and drawer pulls throughout
- Drawers with double steel roller guides
- Laminate countertops with crescent edge throughout
- Choice of ceramic tile backsplash
- Note: Full height tile backsplash is optional
- Residential grade and style "Kingston Brass" kitchen faucet
- Stainless steel kitchen sink
- Hidden cabinet door hinges
- Matching woodgrain overhead cabinet interiors

## BATHROOM

- Choice of 48" shower stall or 54" tub or shower (enclosure is optional)
- Residential grade and style "Kingston Brass" bathroom faucet
- Residential grade and style "Kingston Brass" tub diverter with shower head
- Recessed medicine cabinet on side or front of lavy
- 36" tall lavy cabinet with square drop-in lavy sink
- Laminate countertops with crescent edge throughout
- Choice of ceramic tile backsplash

## BEDROOM

- Full width wardrobe with sliding doors and soffit above
- Single row of drawers under wardrobe sliding doors
- Dresser with overhead cabinet (per floorplan)
- Mirrored wardrobe doors x 1 set

## EXTERIOR

- 6' Front porch with 36" white front door and 2 windows
- "R" Panel metal galvanized roof
- Painted fiber cement lap siding with OSB wood and building wrap
- Rear door with window, internal mini blind and deadbolt
- Exterior lights at each door
- White vinyl framed, low "E", dual glaze windows
- White aluminum framed dual glaze sliding glass door
- Front eave overhang
- Exterior GFI receptacle by sliding glass door



## PLUMBING, ELECTRICAL, HEATING & INSULATION

- PEX waterlines with low point drain
- U.L. approved electrical devices throughout
- 50 amp exterior main panel service with 25' supply cord
- Note: 100 Amp direct wire is available upon request
- 30 gallon fast recovery electric water heater with pan and exterior door
- Easy touch rocker light switches throughout
- R-14 fiberglass floor insulation
- R-13 fiberglass sidewall insulation
- R-28 cellulose blown insulation
- Black iron gas pipe ran to rear of unit
- Under sink waterline shut-off valves
- Interior water heater switch on 30 gallon electric water heater
- Pre-wire for ceiling fan in living room and bedroom
- Pre-wire for TV and phone jacks in living room and bedroom
- Dimmer switch in dining room with 3 -light chandelier

## CONSTRUCTION

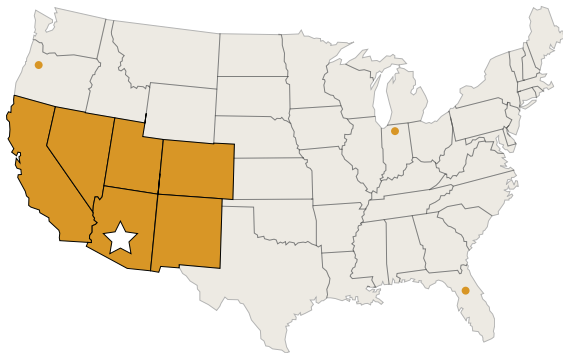
- Full I-beam chassis construction
- Transverse 2" x 6" floor joists
- Detachable hitch from main chassis
- Woven simplex underbelly material
- 8' x 12' high density floor decking
- 2" x 4" sidewalls 16" O.C.
- Pre-engineered scissor trusses 16" O.C.
- 8-strand wire prep
- 30 gauge steel strapping for truss to sidewall and floor to sidewall strength
- RVIA / ANSI 119.5 approved







Cavco Park Models & Cabins  
is a leader in the  
Park Model RV and Outdoor  
Hospitality Industry.



### CAVCO PARK MODELS & CABINS

1366 S Litchfield Rd Goodyear, AZ 85338

Phone: 623-882-2816 / 800-432-0598

## ABOUT CAVCO INDUSTRIES, INC.

### COMMITMENT, EXPERIENCE, STABILITY & STRENGTH

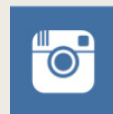
Cavco is publicly traded on the NASDAQ Global Select Market (symbol CVCO). The Cavco companies have been in business for more than 60 years. We have a strong commitment to provide people with quality park model RV's and cabins for seasonal/vacation living. All backed by exceptional service. Forbes Magazine selected Cavco as one of America's 100 Best Small Companies. In recognition of its innovation, customer service, and long term stability, Cavco Industries has been awarded the prestigious MHI Manufacturer of the Year Award for six consecutive years.

### EXCELLENCE IN INNOVATION, QUALITY AND VALUE

We utilize a systems approach to building in controlled factory environments using only prime materials. Factory building offers shorter completion times, less waste and a better value than on-site construction methods. Our park model RV's are efficiently distributed by both independent and community retail centers. We customize styles and specifications for the exclusive use of camping and resort properties and provide accommodations for the Outdoor Hospitality Industry.

### FINANCIALLY STRONG, MARKETING SAVVY AND BUILT TO LAST

Cavco is a debt free company and maintains one of the strongest balance sheets in the industry. We invest heavily in social media and marketing to inform people about the great lifestyle our products help provide. We will be here to serve consumers and wholesale customers long into the future.



FOR MORE INFORMATION VISIT  
**PARKMODELS.COM**

