

PARK MODEL RVS

# MALIBU

# SERIES



The Malibu Series comes standard with 9' 6" sidewalls with flat ceilings & stack windows, horizontal cement lap siding, modern Beko Stainless Steel appliance package and a deluxe front wall elevation with various window selections.

# MALIBU SERIES

# 120MA11351A

BEDS / BATHS / SQFT

1 / 1 / 399

BOX SIZE

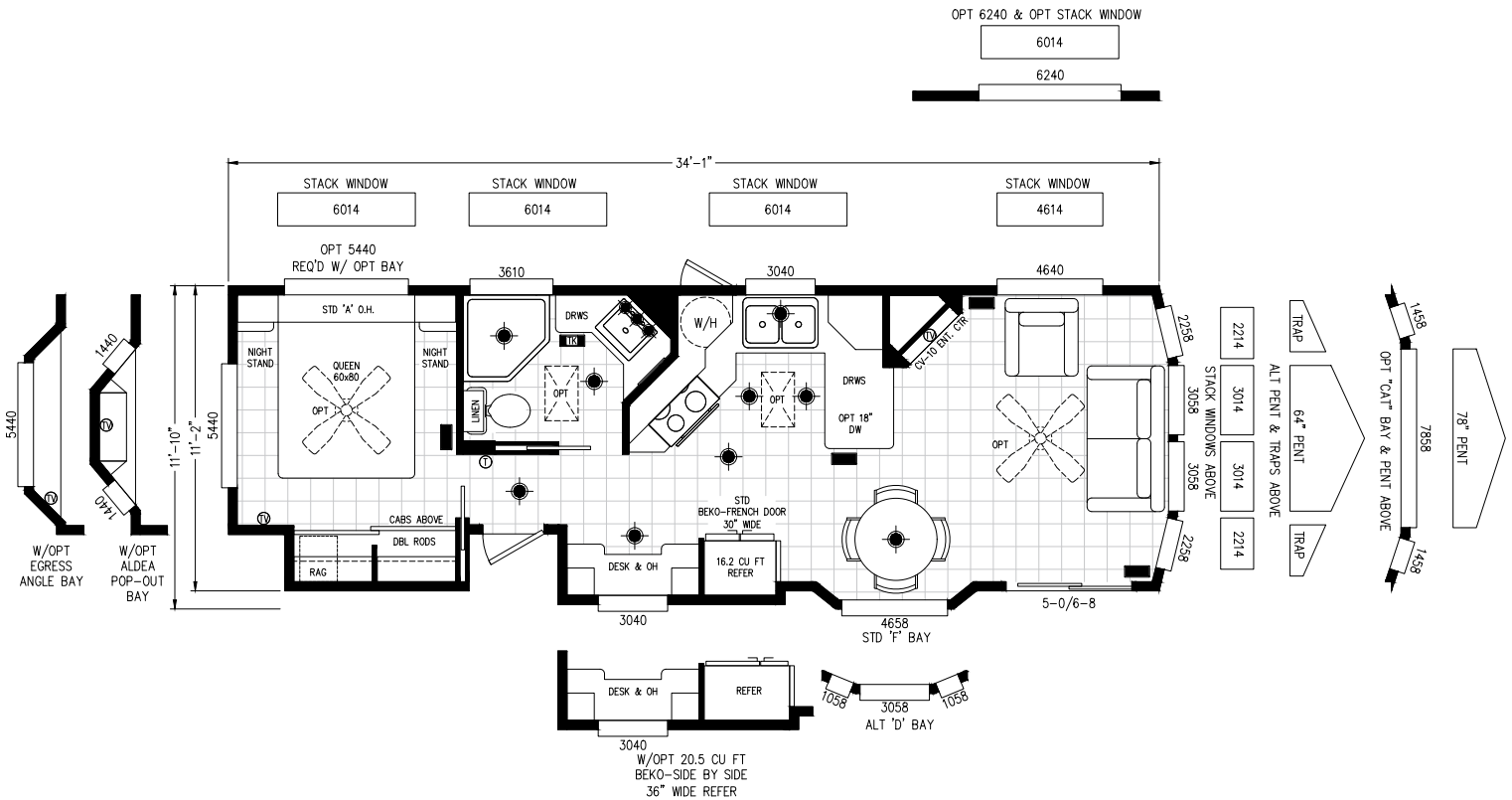
11' 10" - 34' 1"

KITCHEN STYLE

Angled U Kitchen

ENTRANCE

Side



# MALIBU SERIES

# 120MA11351B

BEDS / BATHS / SQFT

1 / 1 / 399

BOX SIZE

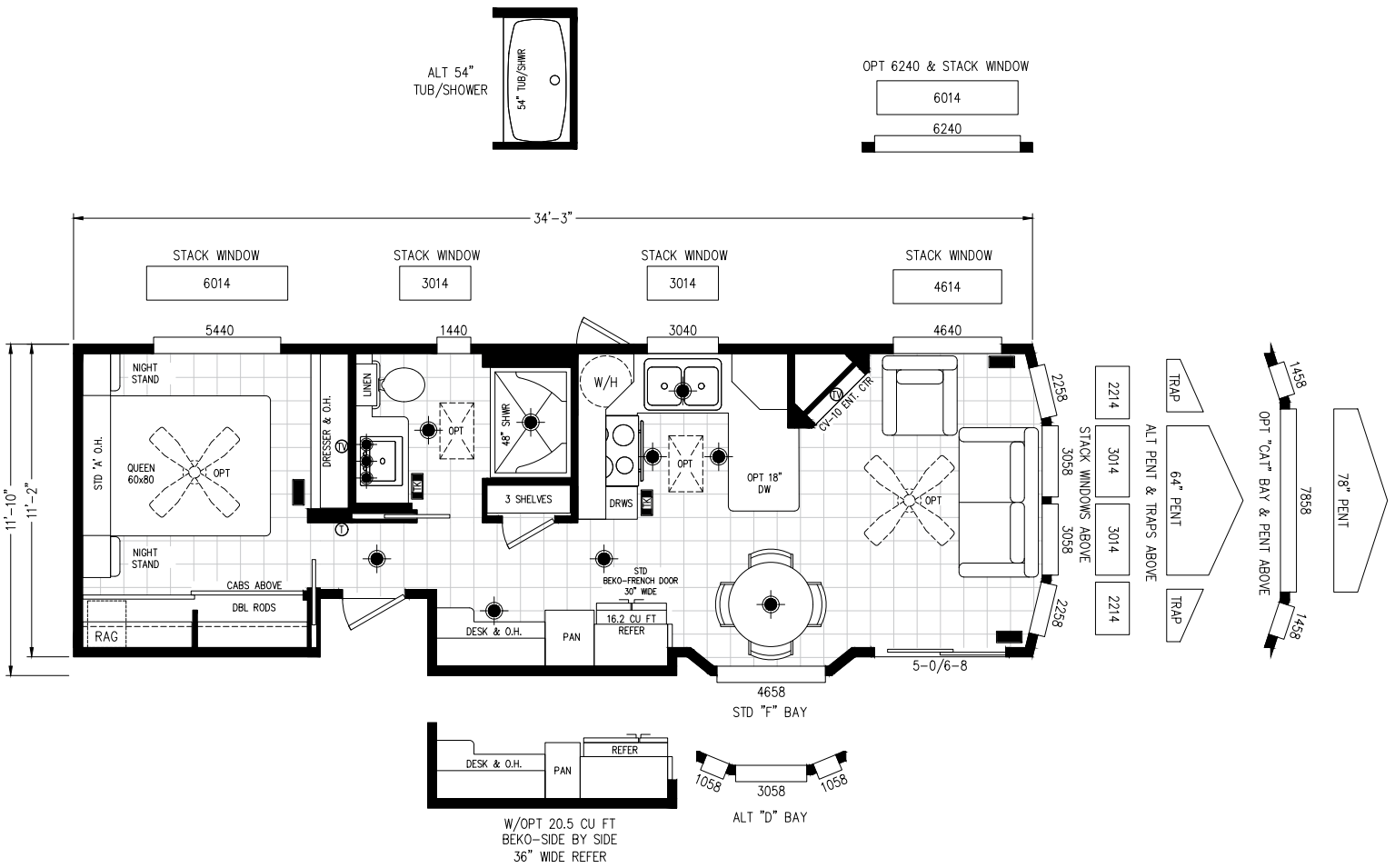
11' 10" - 34' 3"

KITCHEN STYLE

U

ENTRANCE

Side





# MALIBU SERIES

# 120MA11351D

BEDS / BATHS / SQFT

1 / 1 / 399

BOX SIZE

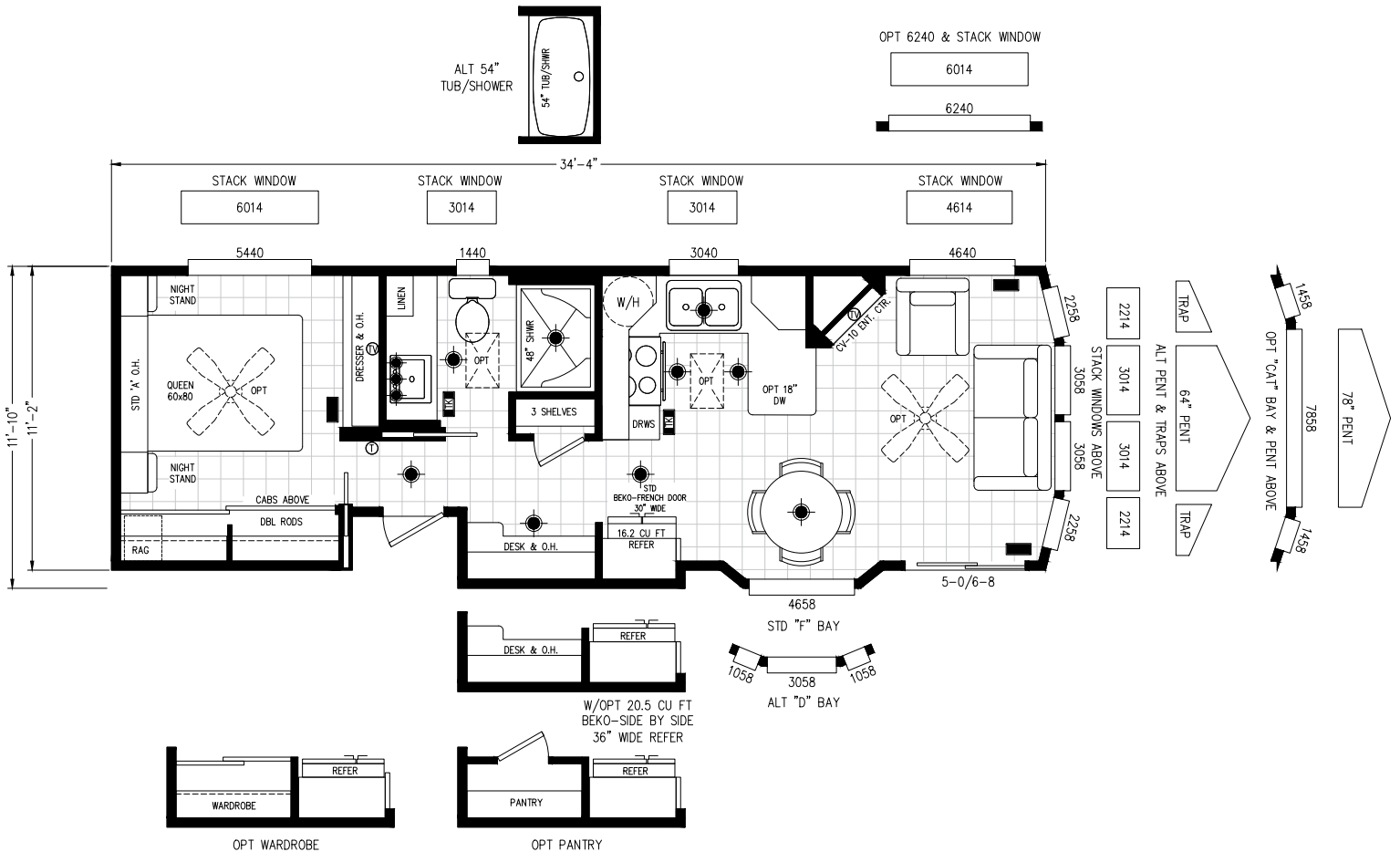
11' 10" - 34' 4"

KITCHEN STYLE

U

ENTRANCE

Side



# MALIBU SERIES

# 120MA11351E

BEDS / BATHS / SQFT

1 / 1 / 399

BOX SIZE

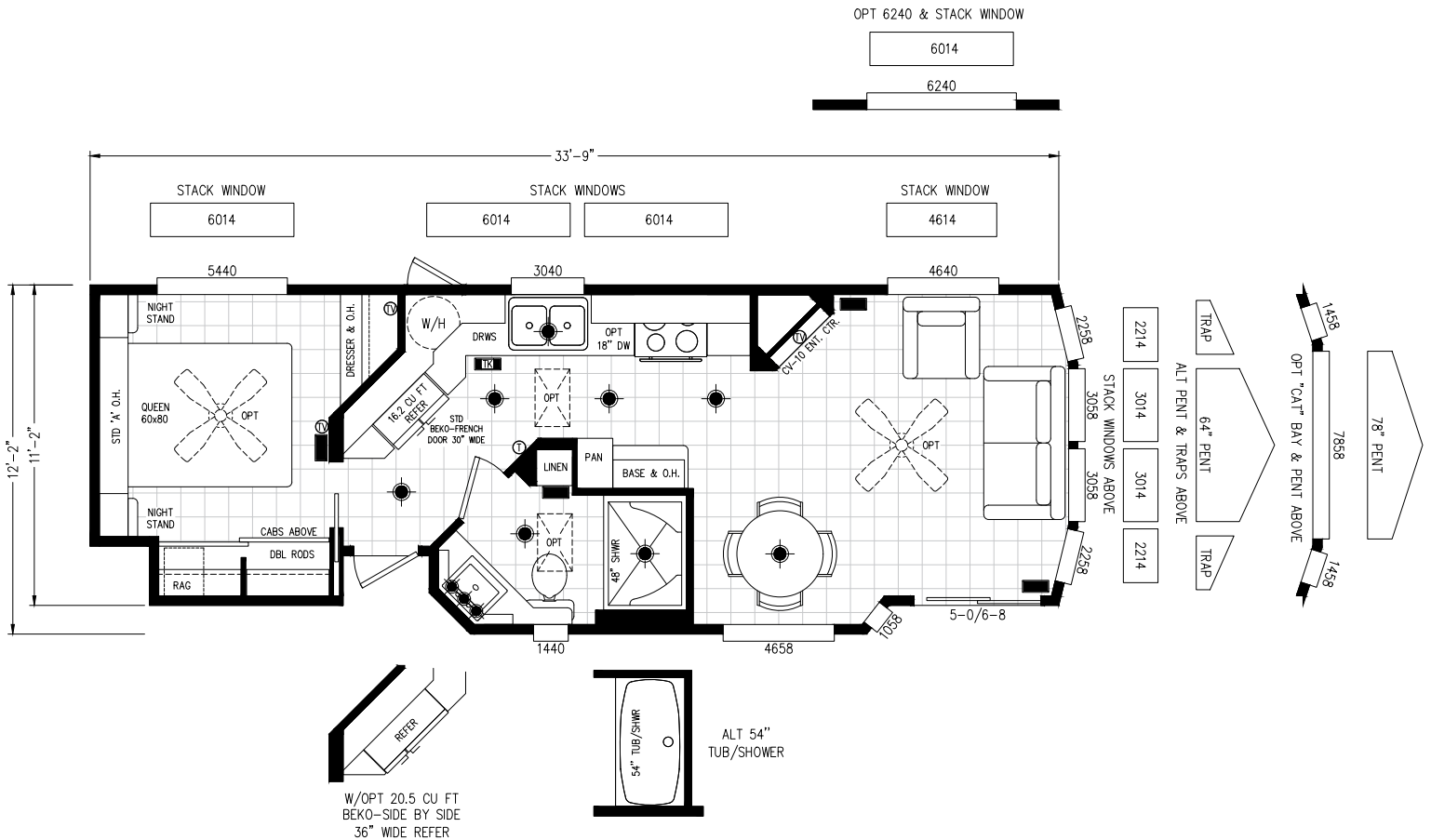
12' 2" - 33' 9"

KITCHEN STYLE

Carousel

ENTRANCE

Side



# MALIBU SERIES

# 120MA11351F

BEDS / BATHS / SQFT

1 / 1 / 399

BOX SIZE

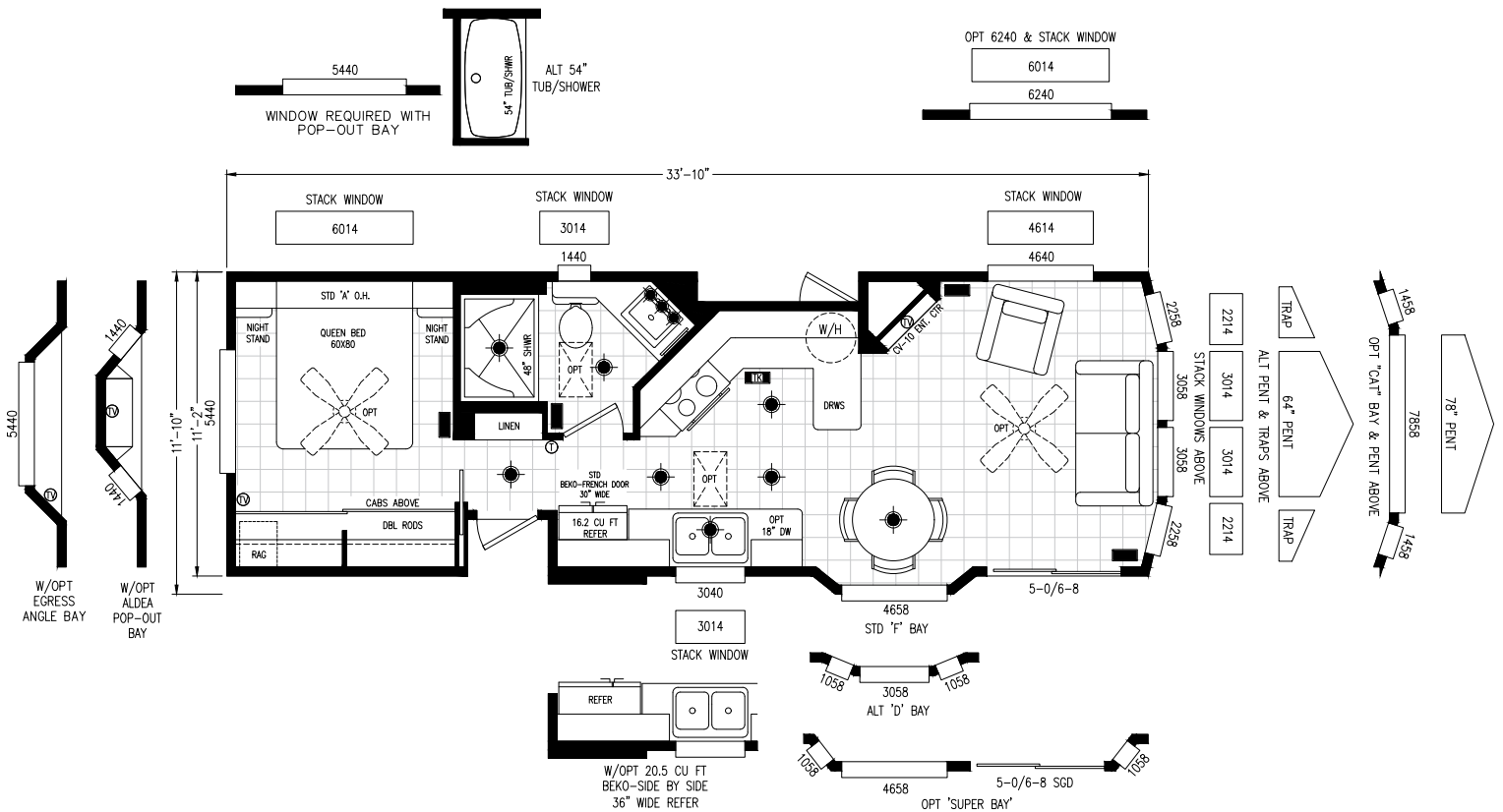
11' 10" - 33' 10"

KITCHEN STYLE

Alley Galley

ENTRANCE

Side









# MALIBU SERIES

# 120MA11351H

BEDS / BATHS / SQFT

1 / 1 / 399

BOX SIZE

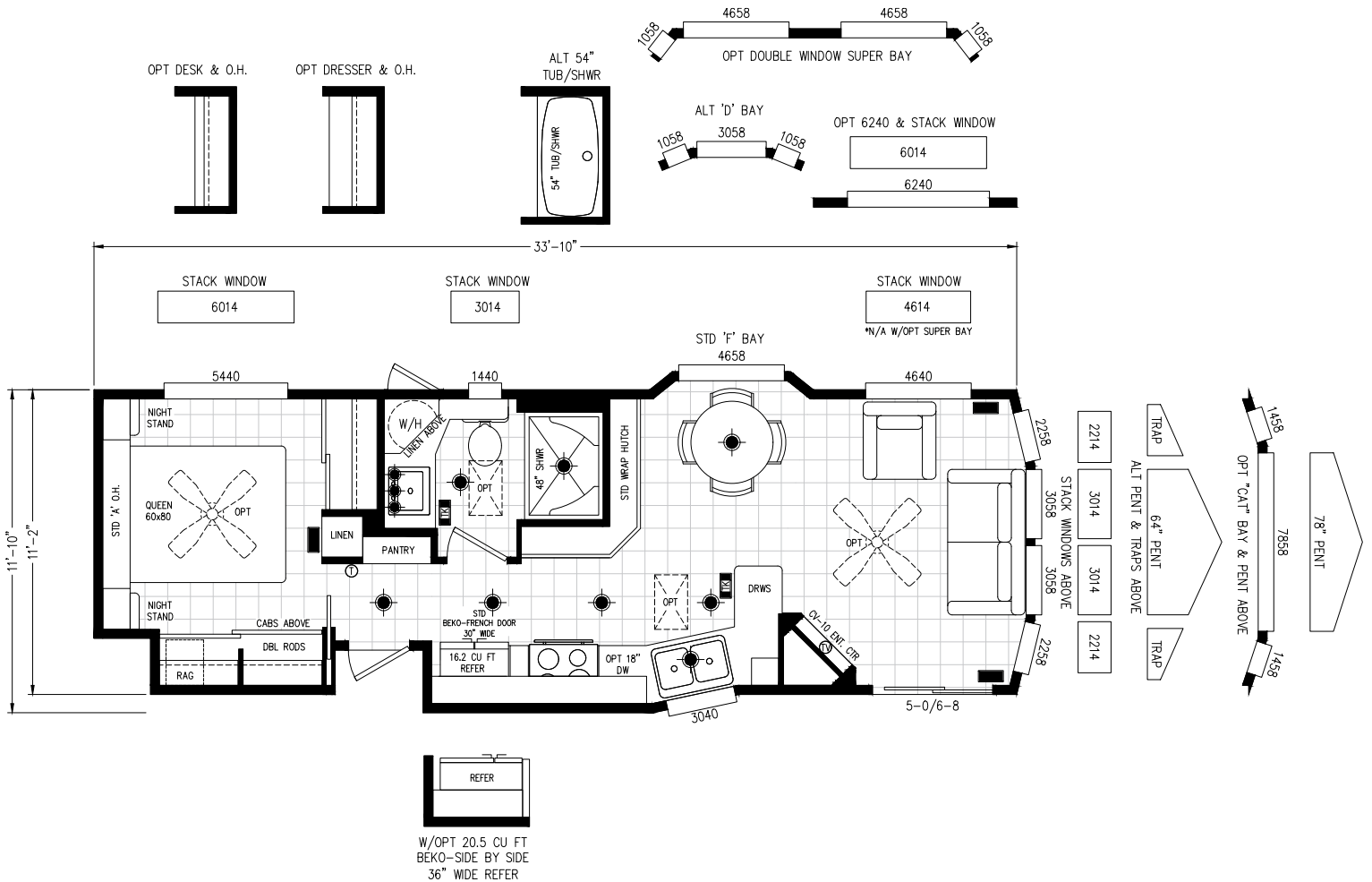
11' 10" - 33' 10"

KITCHEN STYLE

Galley

ENTRANCE

Side



# MALIBU SERIES

# 120MA113511

BEDS / BATHS / SQFT

1 / 1 / 399

BOX SIZE

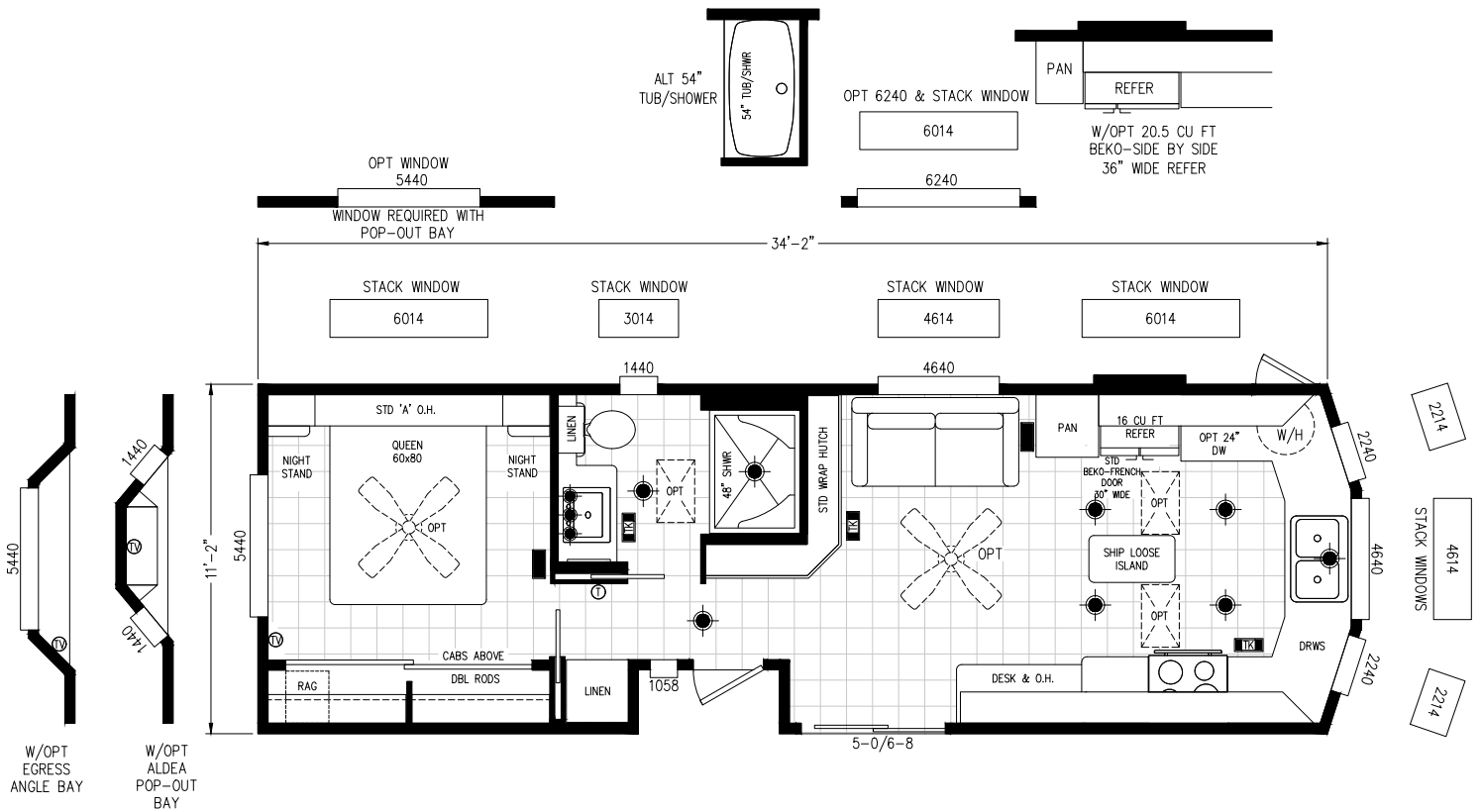
11' 2" - 34' 2"

KITCHEN STYLE

Front

ENTRANCE

Side



# MALIBU SERIES

# 120MA11351J

BEDS / BATHS / SQFT

1 / 1 / 399

BOX SIZE

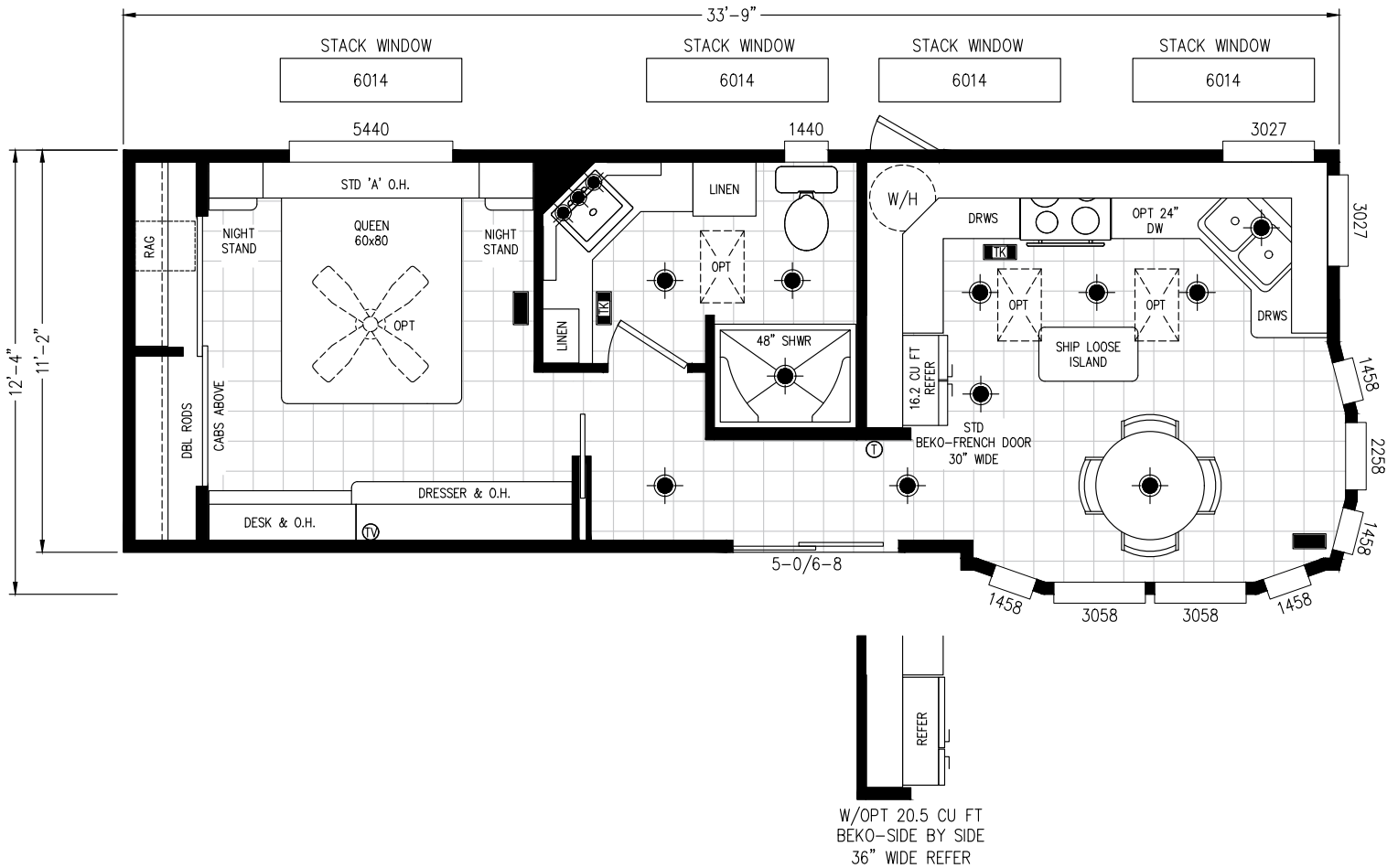
12' 4" - 33' 9"

KITCHEN STYLE

Front

ENTRANCE

Side



# MALIBU SERIES

# 120MA11351K

BEDS / BATHS / SQFT

1 / 1 / 399

BOX SIZE

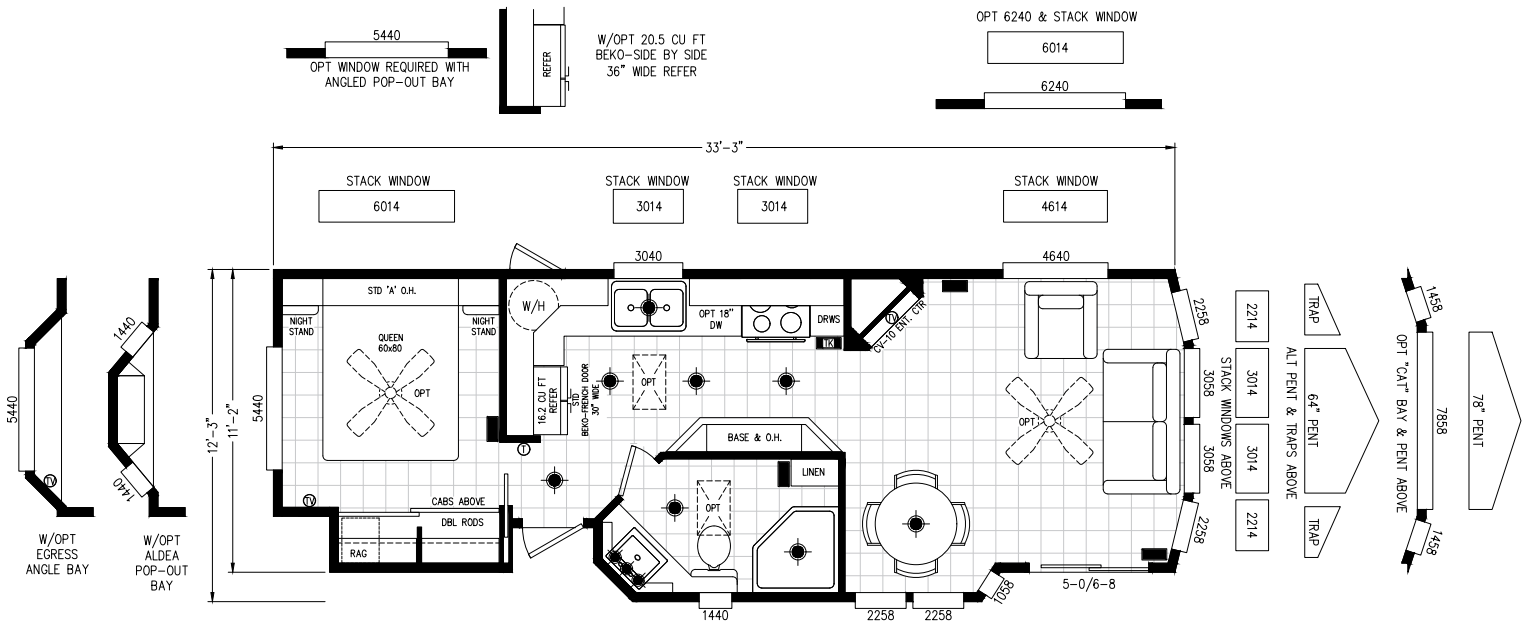
12' 3" - 33' 3"

KITCHEN STYLE

Carousel

ENTRANCE

Side





# MALIBU SERIES

# 120MA11351N

BEDS / BATHS / SQFT

1 / 1 / 399

BOX SIZE

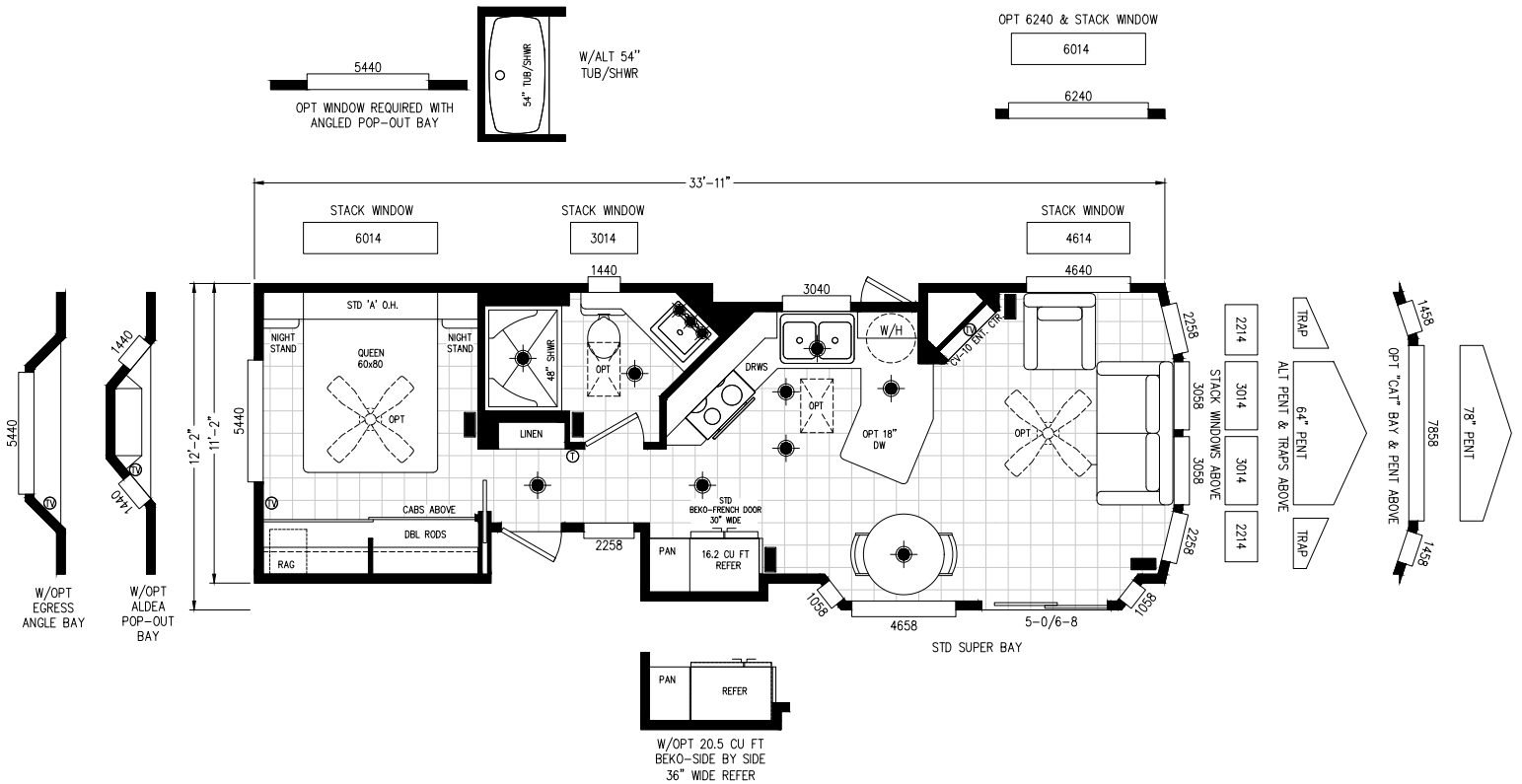
12' 2" - 33' 11"

KITCHEN STYLE

U

ENTRANCE

Side







# MALIBU SERIES

# 120MA11351X

BEDS / BATHS / SQFT

1 / 1 / 399

BOX SIZE

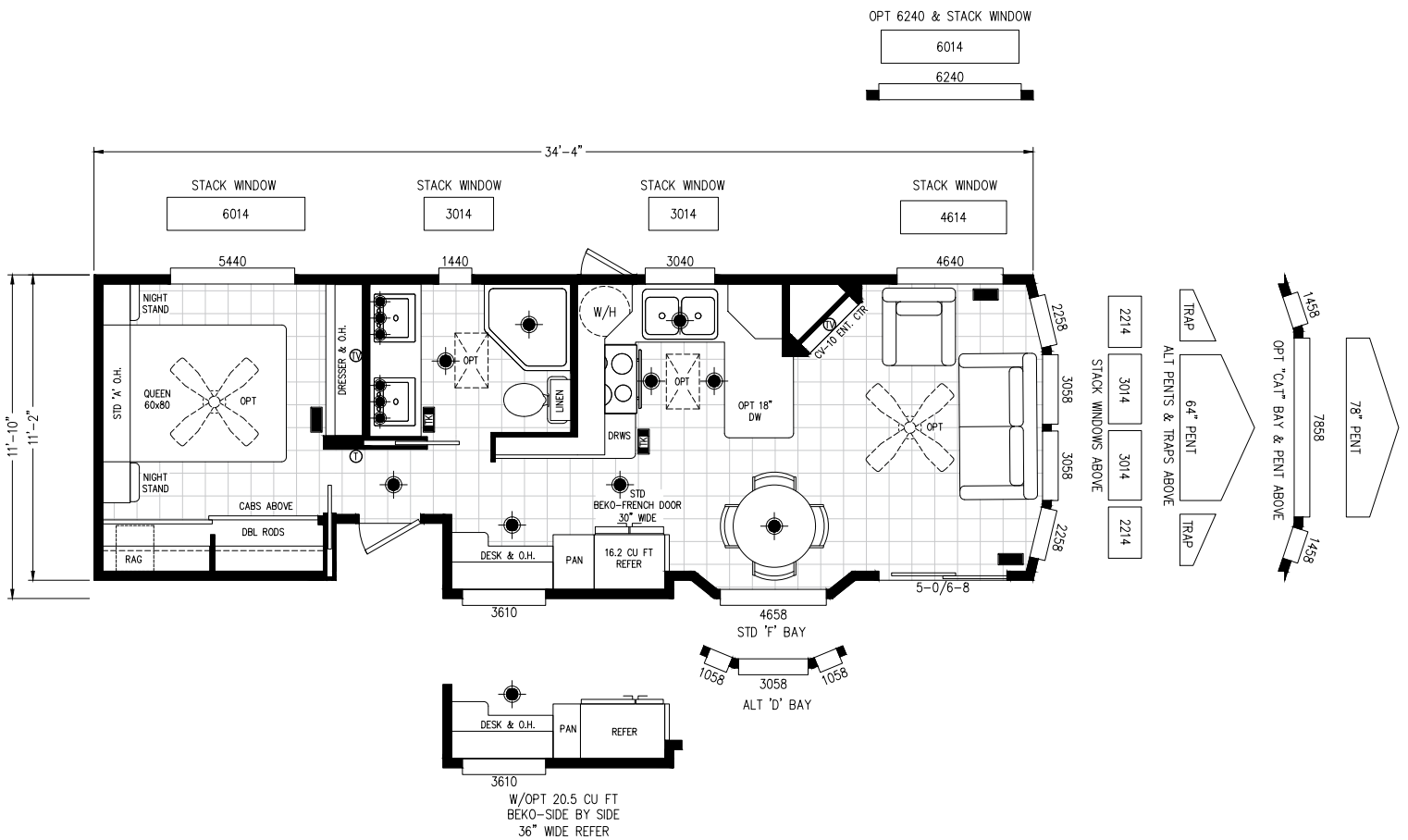
11' 10" - 33' 4"

KITCHEN STYLE

U

ENTRANCE

Side



# MALIBU SERIES

# 120MA14301A

BEDS / BATHS / SQFT

1 / 1 / 399

BOX SIZE

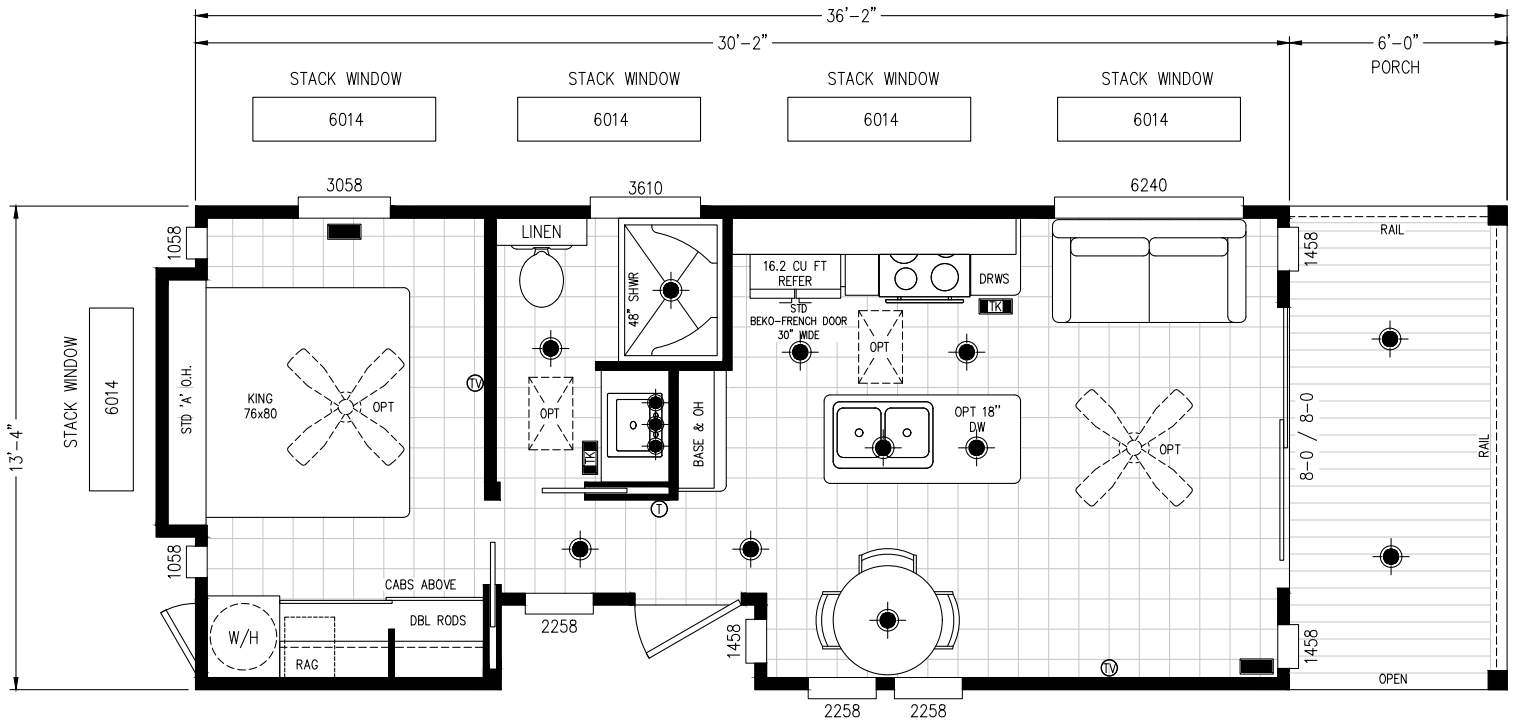
13' 4" - 36' 2"

KITCHEN STYLE

Straight

ENTRANCE

Front w/ Porch



# MALIBU SERIES

# 120MA15261A

BEDS / BATHS / SQFT

BOX SIZE

KITCHEN STYLE

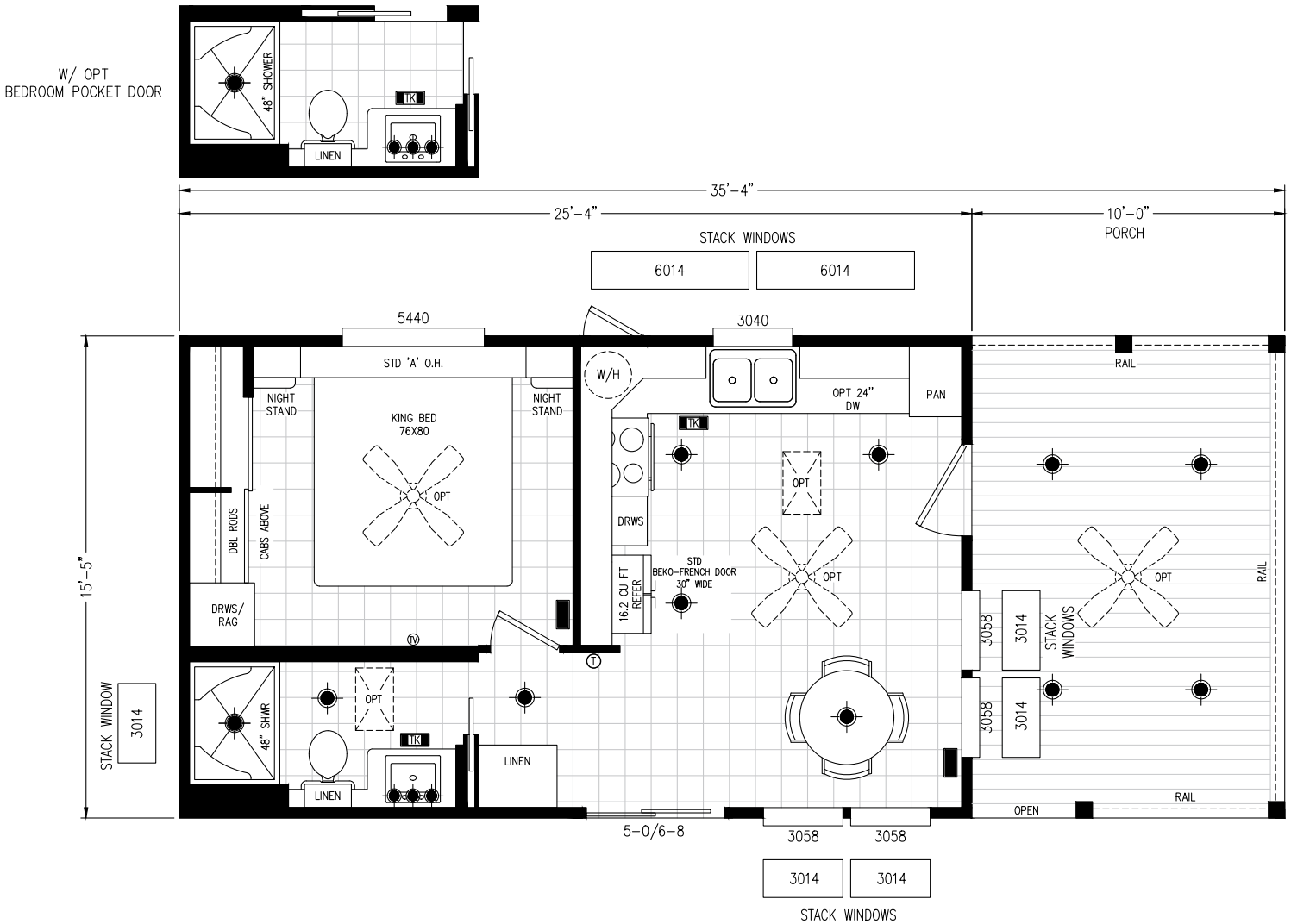
ENTRANCE

1 / 1 / 399

15' 5" - 35' 4"

Large L

Front w/ Porch



# MALIBU SERIES

# CHOICES & OPTIONS

## POPULAR OPTIONS

- Vinyl Plank Flooring throughout
- Beko Stainless Steel Appliances
- Solid Surface Countertops
- Full-Height Ceramic Tile Backsplash
- Kitchen Faucet Pulldown Sprayer
- 39" Overhead Cabinets
- Undermount Stainless or Farmhouse Sink
- Enclosed Shower with Full Shower Tile
- Solid Surface Countertops
- Metal Roof - Galvanized
- Tankless Water Heater - Gas
- Ceiling Fans in Living and Bedroom

## DECOR CHOICES

We offer decor choices including flooring, tile backsplash, countertops, paint choices and much more.



## PREMIUM APPLIANCES

We are proud to offer Beko industry-leading appliances.



## FLOOR PLAN OPTIONS

- Extended Bays
- Stack Windows
- Entertainment Centers
- Storage Cabinets

## NAME BRAND MATERIALS



# MALIBU SERIES

# STANDARD FEATURES

## INTERIOR

- \* 9' 6" Sidewalls with flat ceiling & stack windows
- \* White interior passage & pocket doors (per floorplan)
- \* Tape and textured walls T/O with square cased window trim
- \* Choice of interior paint color throughout - Two tone optional
- \* "D" or "F" dining room bay (per floorplan)
- \* Built-in CV- entertainment tv center (per floorplan)
- \* Samsung Smart TV w/Adjustable Bracket
- \* "SONOS" beam sound bar
- "Latitude Series" flat Interior door lever hardware
- 2" White Faux blinds throughout except stack windows
- Congoleum Lino floor covering throughout
- 4" Recessed can lighting throughout (bulbs not included)
- Smoke detector and fire extinguisher
- LP Leak Gas Detector

## KITCHEN

- \* Beko 30" Stainless steel electric range (gas available.ft. Stainless Steel french door refrigerator w/ ice & water
- \* Beko Over the range Stainless Steel spacesaver microwave oven
- \* Laminate countertops with crescent edge throughout
- \* 1-3 rows of ceramic tile backsplash (per floorplan)
- \* Residential grade & style "Kingston Brass" kitchen faucet
- \* Matching woodgrain cabinet interiors with adjustable overhead shelves
- \* Hardwood cabinet face frames
- \* Lazy Susan in angled overhead cabinet (per floorplan)
- Hardwood cabinet doors
- Small profile cove molding on cabinet overheads
- Residential style cabinet door handles and pulls
- Drawers with double steel roller guides
- Hidden cabinet door hinges
- Stainless steel kitchen sink

## BED & BATH

- \* Choice of 48" shower stall or 54" tub or shower
- \* Glass enclosure - 48" & 54"
- \* Laminate countertops with crescent edge throughout
- \* 1-3 rows of ceramic tile backsplash (per floorplan)
- \* Storage cabinet above toilet (per floorplan)
- \* Single drawer bank in lavy cabinet (per floorplan)
- Square white drop-in lavy sink
- Residential grade and style bathroom faucet
- Residential grade and style tub diverter with shower head
- Recessed medicine cabinet on side or front of lavy
- Satin towel bar and tissue holder

- Full width wardrobe with mirrored sliding doors
- Egress bedroom window
- Overhead cabinet above bed location (per floorplan)
- 2-Nights Stands (per floorplan)

## EXTERIOR

- Deluxe front wall elevation w/ various window selections
- Painted fiber cement lap siding with OSB wood & wrap
- Architectural shingled roof
- Rear door with window, internal mini blind & deadbolt
- Exterior lights at each door
- White vinyl framed, low "E", dual glaze windows
- White aluminum framed dual glaze sliding glass door
- Front eave overhang
- Exterior GFI receptacle by sliding glass door

## MECHANICAL

- 30 gallon fast recovery electric water heater with pan and exterior door
- R-11 fiberglass floor insulation
- R-13 fiberglass sidewall insulation
- R-28 cellulose blown insulation
- Toe-Kick Registers in Kitchen and Bathroom (per floorplan)
- Pre-wire for TV and phone in living room & bedroom
- Dimmer switch in dining room with 3 -light chandelier
- PEX waterlines with low point drain
- U.L. approved electrical devices throughout
- 50 amp exterior main panel service with 25' supply cord
- Easy touch rocker light switches throughout
- Black iron gas pipe ran to rear of unit
- Under sink waterline shut-off valves
- Interior water heater switch on electric water heater
- Pre-wire for ceiling fan in living room and bedroom

## CONSTRUCTION

- Full 10" I-beam chassis construction
- Transverse 2" x 6" floor joists
- Detachable hitch from main chassis
- Woven simplex underbelly material
- 8' x 12' high density floor decking
- 2" x 4" sidewalls 16" O.C.
- Pre-engineered scissor trusses 16" O.C.
- 8-strand wire for on-site HVAC
- 30 gauge steel strapping for truss to sidewall and floor to sidewall strength
- RVIA / ANSI 119.5 approved

\* Series Specific Standard Features

