

PARK MODEL RVS

SEDONA

SERIES



The Sedona Series come standard with 9' flat ceilings throughout, square front pop-out front-end elevations and a variety of bays and kitchen styles. In addition, Sedona features include residential-size appliances, hardwood raised panel cabinet doors and a variety of laminate countertop choices.

SEDONA SERIES

120SN11351A

BEDS / BATHS / SQFT

1 / 1 / 399

BOX SIZE

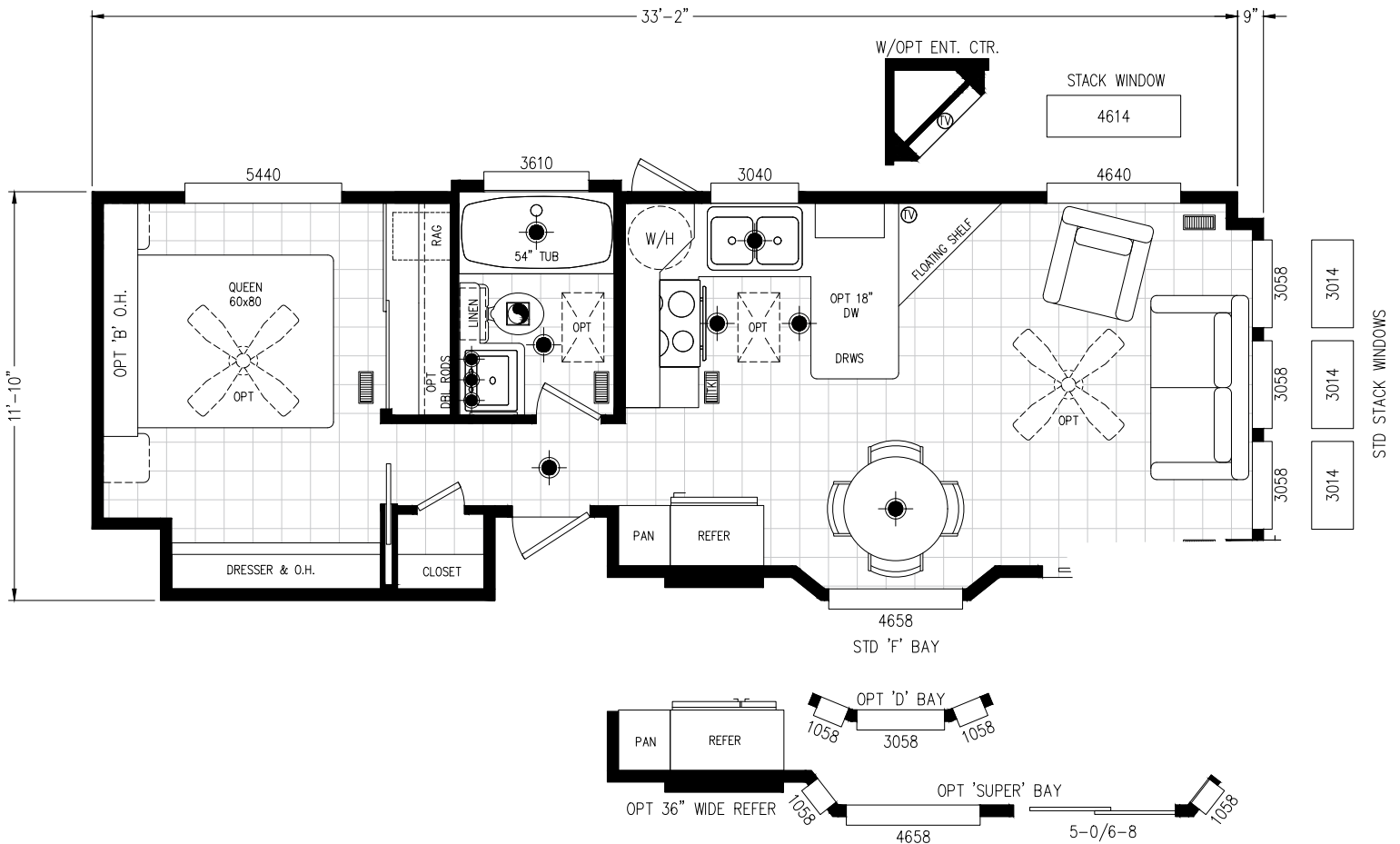
11'9" - 33' 4"

KITCHEN STYLE

U Kitchen

ENTRANCE

Side



SEDONA SERIES

120SN11351B

BEDS / BATHS / SQFT

BOX SIZE

KITCHEN STYLE

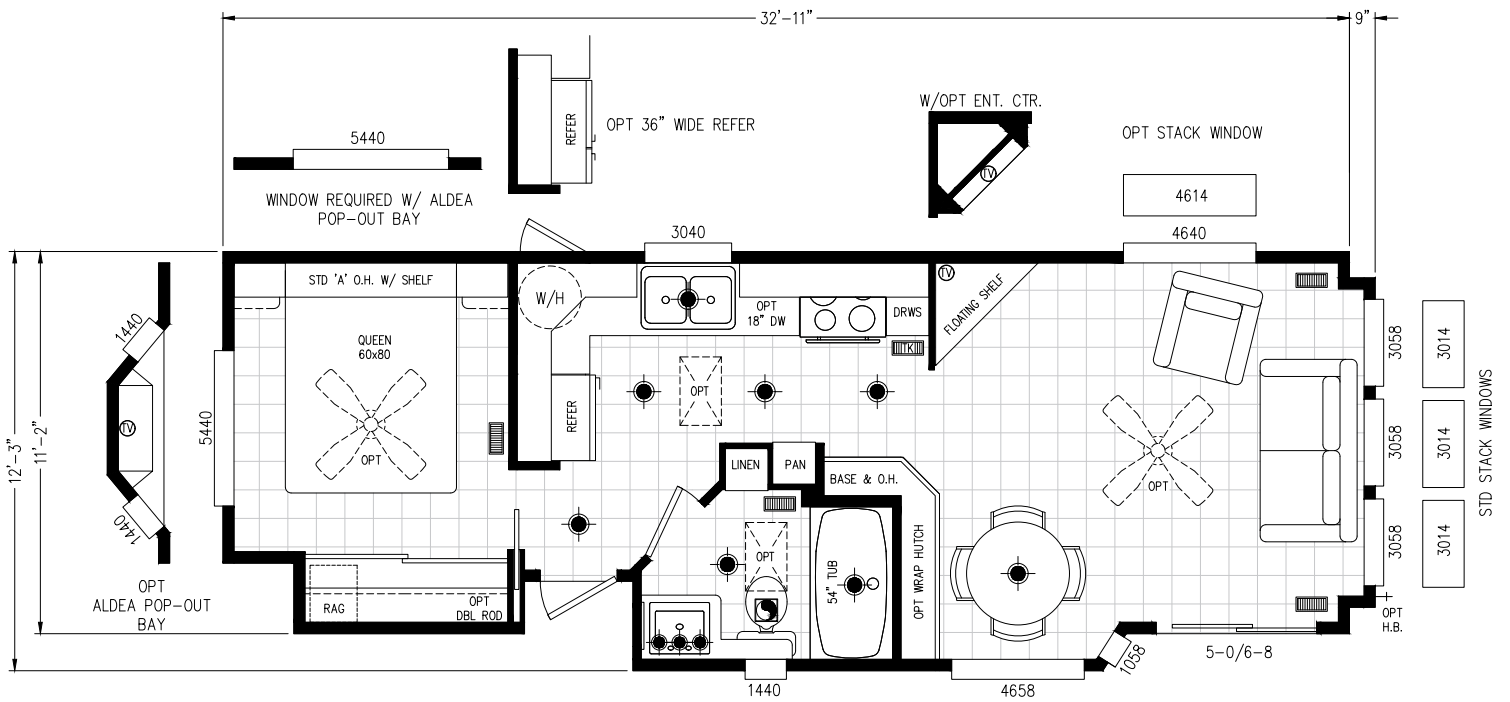
ENTRANCE

1 / 1 / 399

12' 1" - 32' 11"

Carousel

Side



SEDONA SERIES

120SN11351C

BEDS / BATHS / SQFT

1 / 1 / 399

BOX SIZE

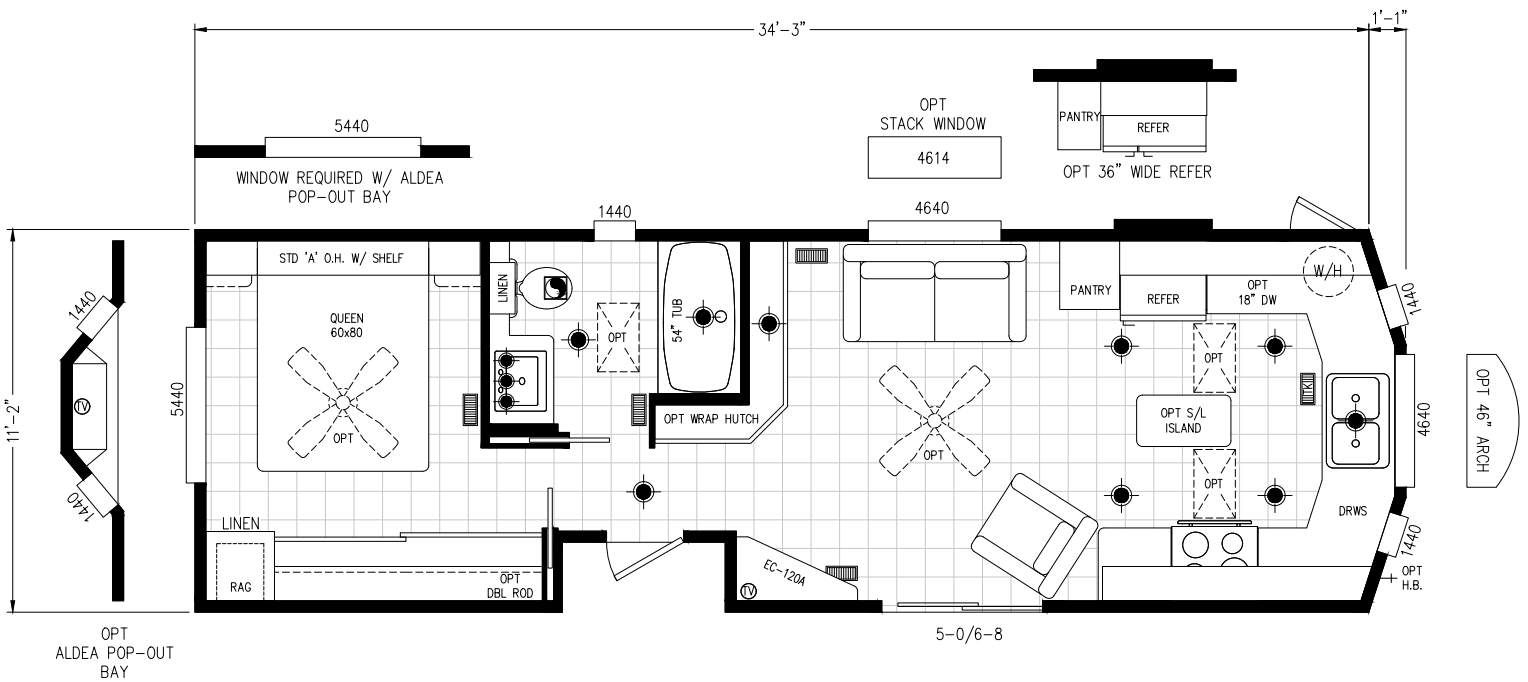
11' 2" - 34' 3"

KITCHEN STYLE

Horseshoe Front

ENTRANCE

Side



SEDONA SERIES

120SN11351D

BEDS / BATHS / SQFT

1 / 1 / 399

BOX SIZE

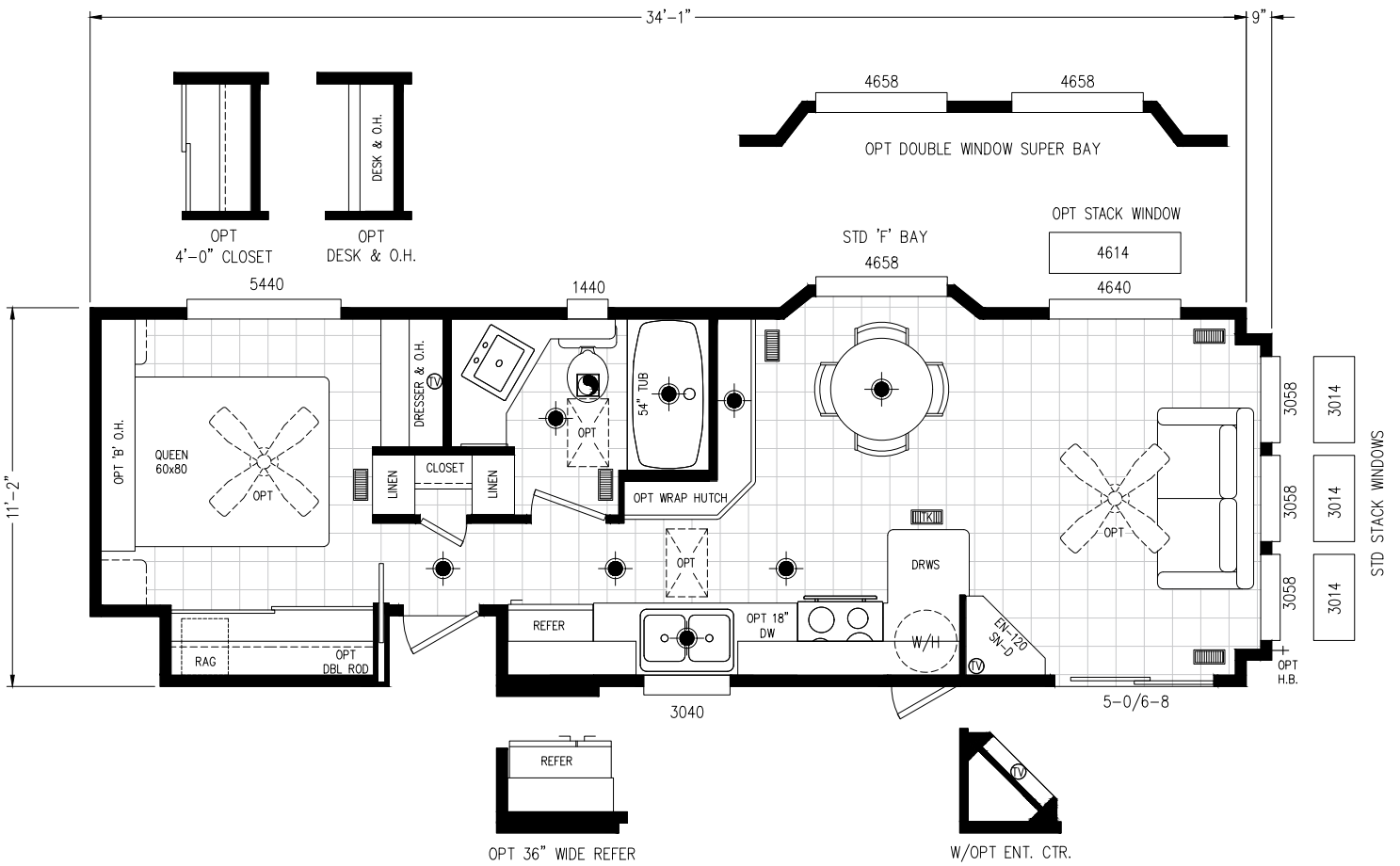
11' 2" - 34' 1"

KITCHEN STYLE

Galley

ENTRANCE

Side



SEDONA SERIES

120SN11351E

BEDS / BATHS / SQFT

1 / 1 / 399

BOX SIZE

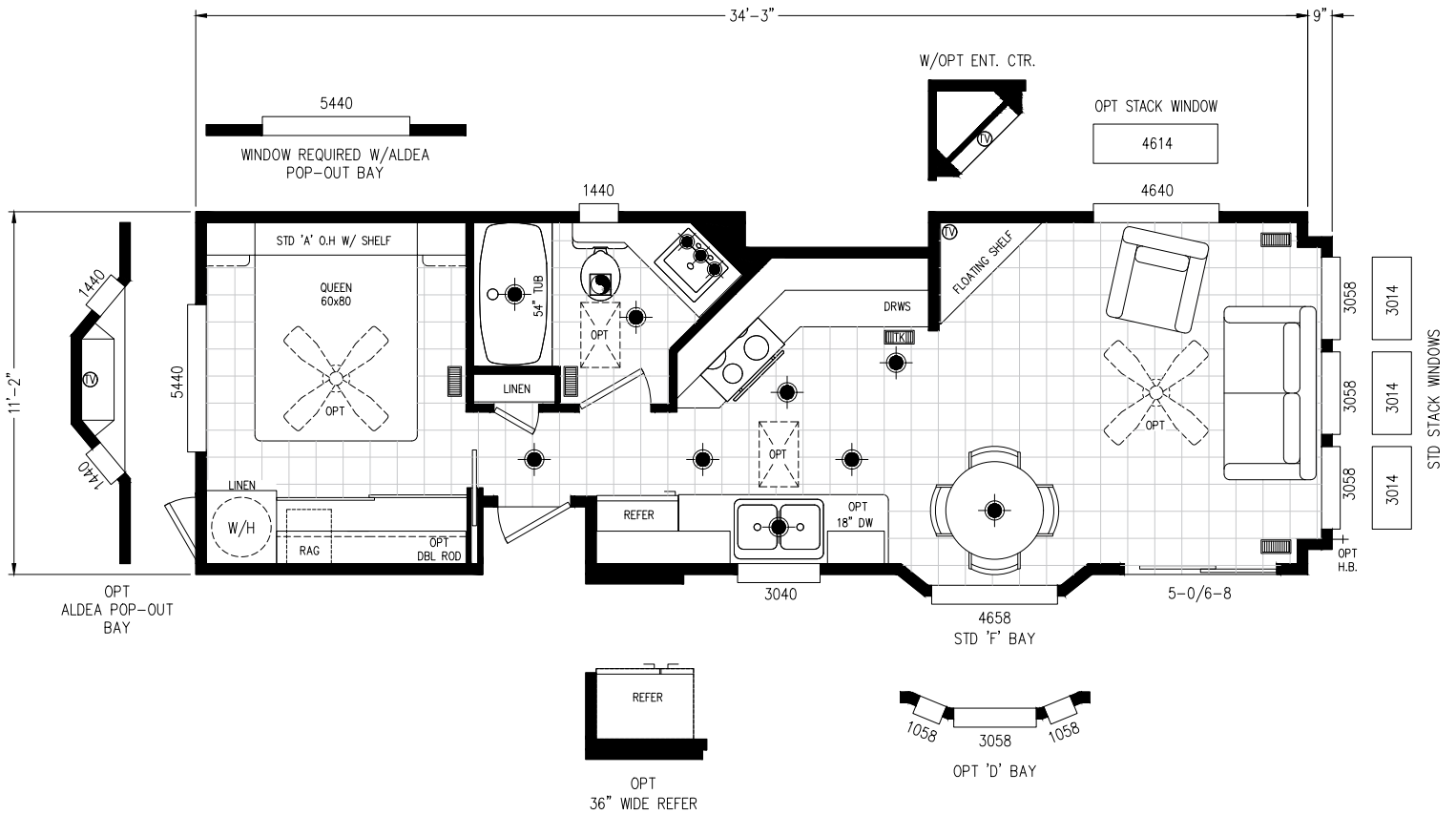
11' 2" - 34' 3"

KITCHEN STYLE

Alley Galley

ENTRANCE

Side



SEDONA SERIES

120SN11351G

BEDS / BATHS / SQFT

1 / 1 / 399

BOX SIZE

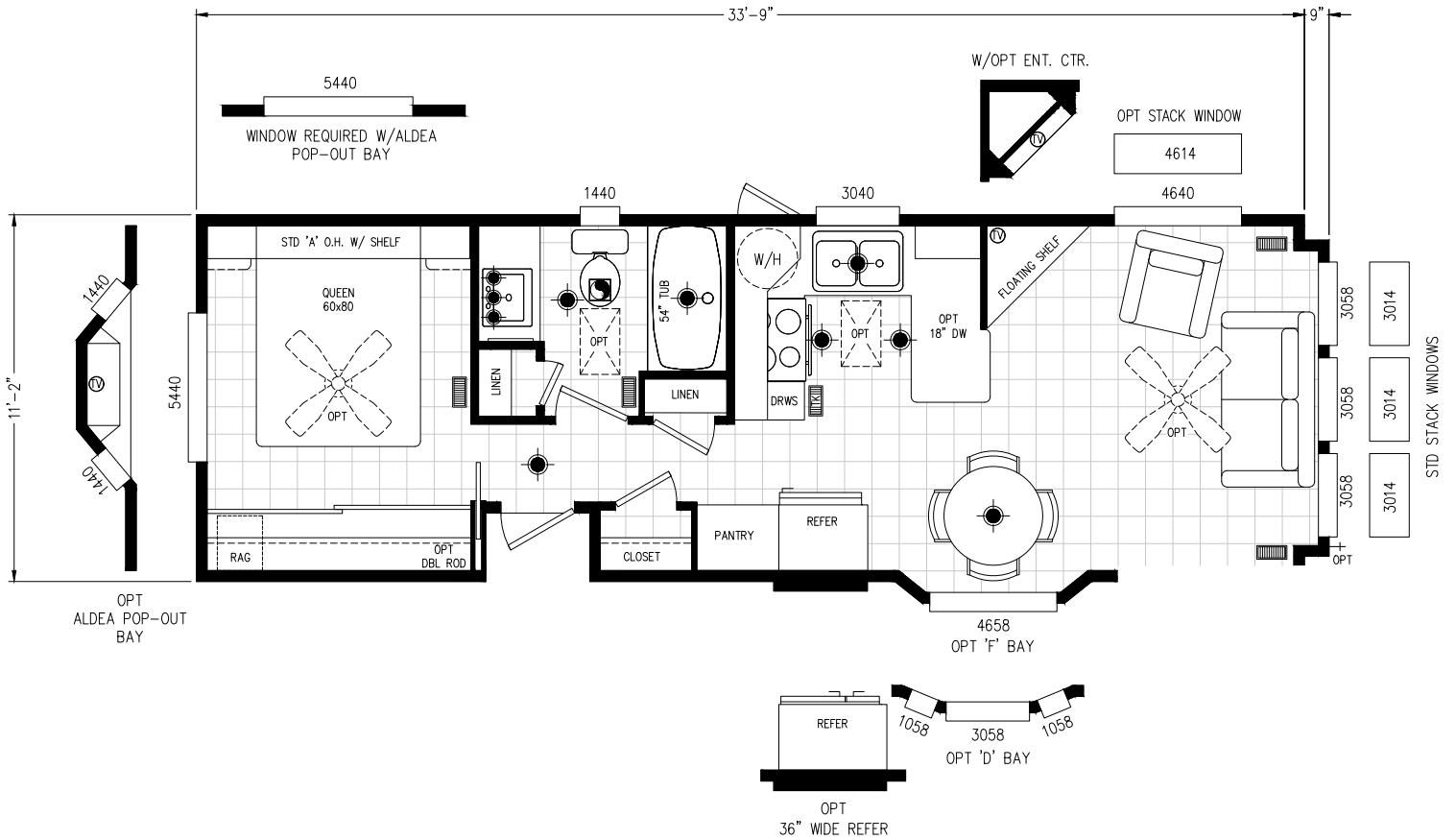
11' 2" - 33' 9"

KITCHEN STYLE

U Kitchen

ENTRANCE

Side



SEDONA SERIES

120SN11351H

BEDS / BATHS / SQFT

BOX SIZE

KITCHEN STYLE

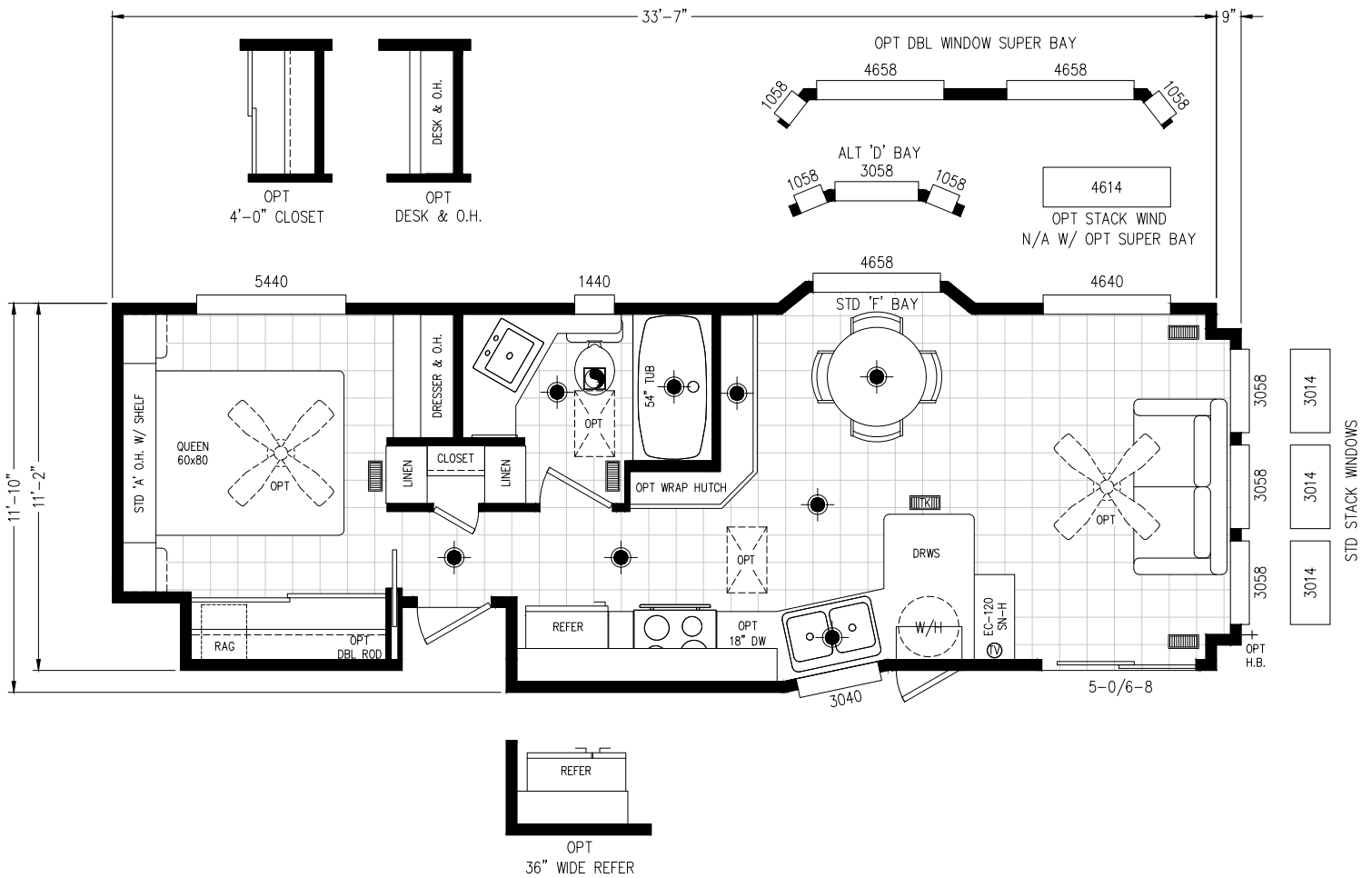
ENTRANCE

1 / 1 / 399

11'9" - 33' 7"

Galley

Side



SEDONA SERIES

120SN11351J

BEDS / BATHS / SQFT

1 / 1 / 399

BOX SIZE

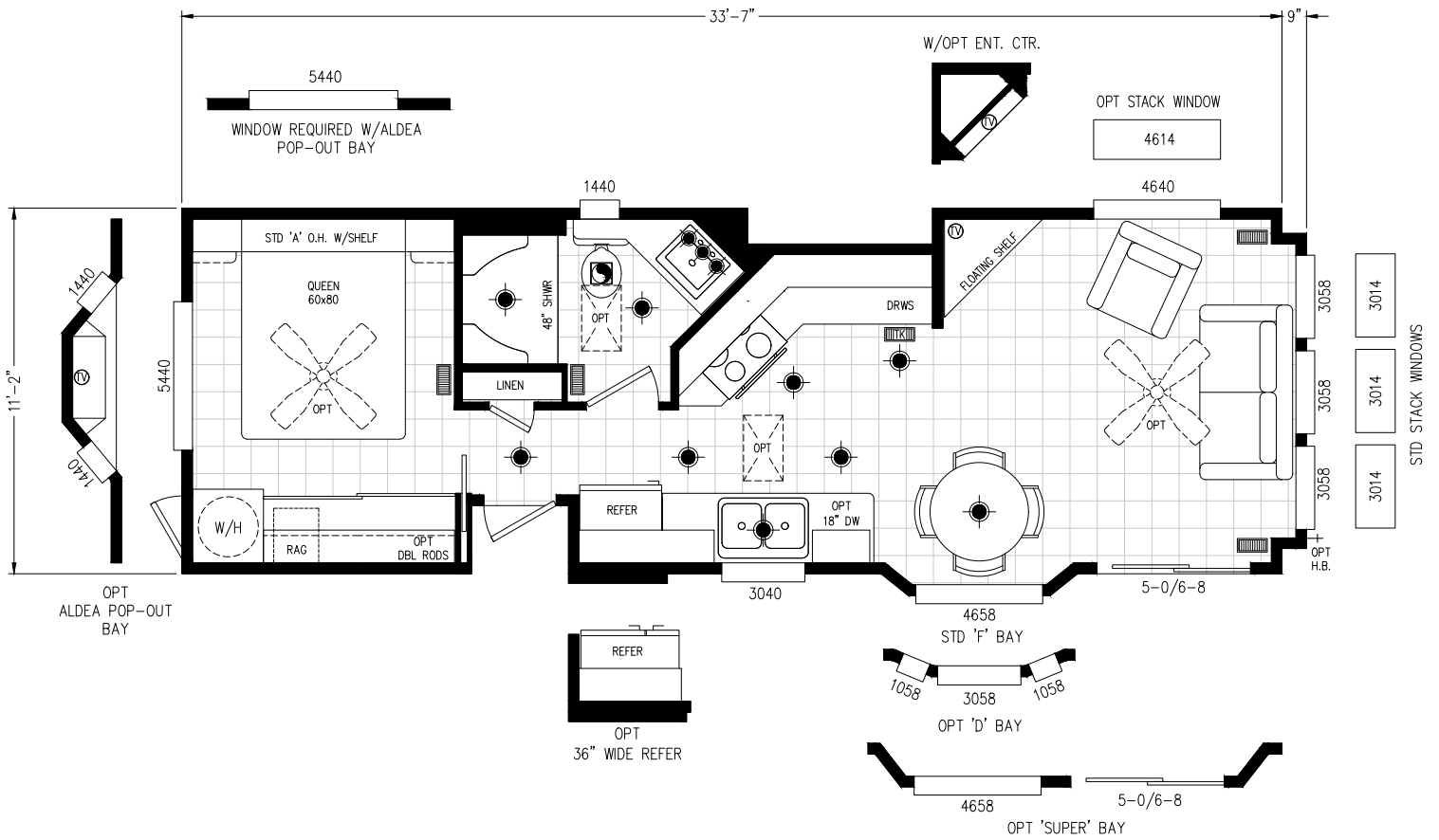
11' 2" - 33' 7"

KITCHEN STYLE

Alley Galley

ENTRANCE

Side



SEDONA SERIES

120SN11351K

BEDS / BATHS / SQFT

1 / 1 / 399

BOX SIZE

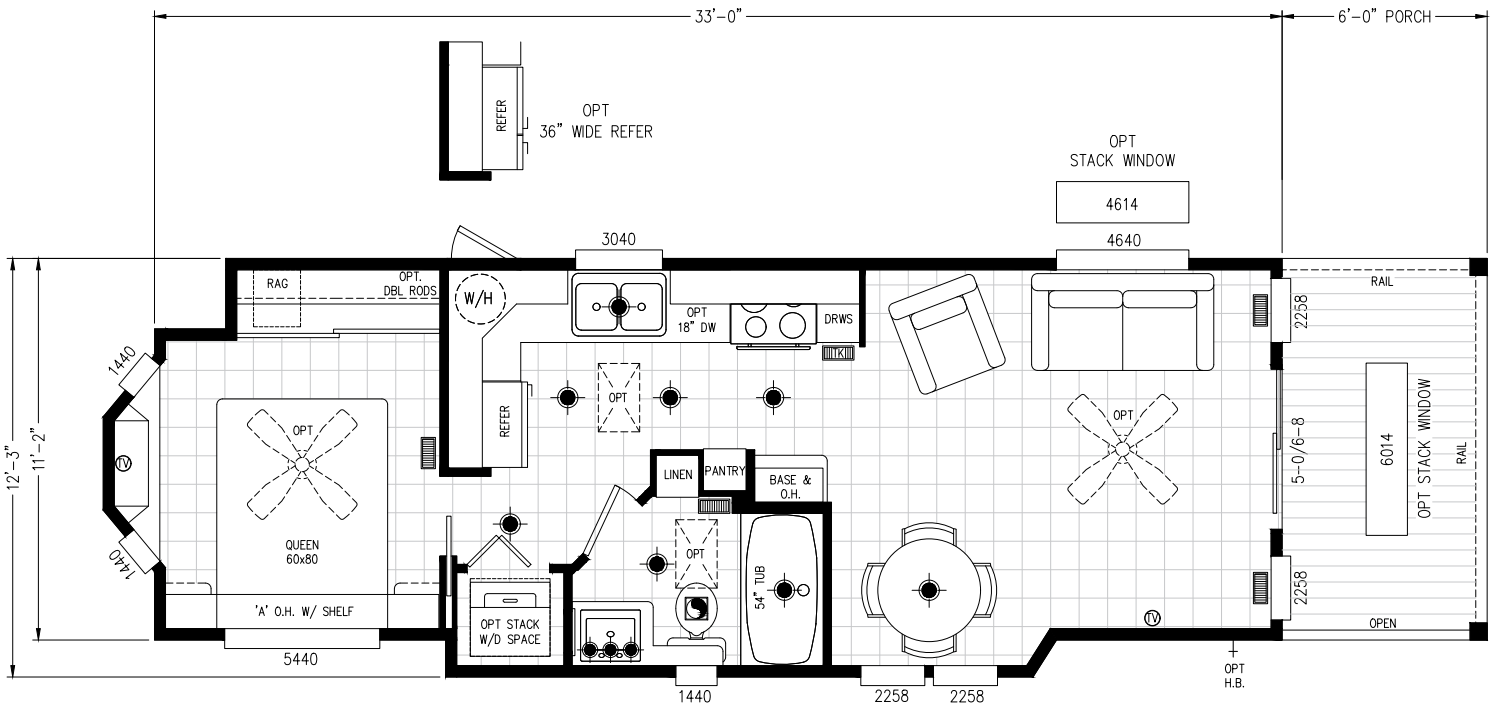
12' 1" - 33'

KITCHEN STYLE

Carousel

ENTRANCE

Front w/ Porch



SEDONA SERIES

CHOICES & OPTIONS

POPULAR OPTIONS

- Vinyl Plank Flooring throughout
- Beko Stainless Steel Appliances
- Solid Surface Countertops
- Full-Height Ceramic Tile Backsplash
- Kitchen Faucet Pulldown Sprayer
- 39" Overhead Cabinets
- Undermount Stainless or Farmhouse Sink
- Enclosed Shower with Full Shower Tile
- Solid Surface Countertops
- Metal Roof - Galvanized
- Tankless Water Heater - Gas
- Ceiling Fans in Living and Bedroom

DECOR CHOICES

We offer decor choices including flooring, tile backsplash, countertops, paint choices and much more.



PREMIUM APPLIANCES

We are proud to offer Beko industry-leading appliances.



FLOOR PLAN OPTIONS

- Extended Bays
- Stack Windows
- Entertainment Centers
- Storage Cabinets

NAME BRAND MATERIALS



SEDONA SERIES

STANDARD FEATURES

INTERIOR

- * 9' Sidewalls with flat ceilings throughout
- * White interior passage doors
- * Tape and textured walls with rounded corners
- * White interior paint throughout
- * Basic TV Shelf
- "Latitude Series" flat Interior door lever hardware
- 2" White faux wood blinds T/O *except stack windows
- Congoleum Lino floor covering throughout
- 4" can lighting throughout *bulbs no included
- Smoke detector and fire extinguisher
- LP Leak Gas Detector

KITCHEN

- * Black 30" gas range with coil burners
- * Black 16.9 cu. ft. double door frost free refrigerator
- * Black 30" range hood with exhaust fan and light
- * Laminate countertops with 4" backsplash
- * Single lever kitchen faucet
- * Matching woodgrain overhead cabinet interiors
- Hardwood cabinet doors
- Small profile cove molding on cabinet overheads
- Residential style cabinet door handles and pulls
- Drawers with double steel roller guides
- Hidden cabinet door hinges
- Stainless steel kitchen sink

BED & BATH

- * Choice of fiberglass one piece tub/shower or shower only
- * Laminate countertops with self edge
- * 4" laminate backsplash
- Square white drop-in lavy sink
- Residential grade and style bathroom faucet
- Residential grade tub diverter with shower head
- Recessed medicine cabinet on side or front of lavy
- Satin towel bar and tissue holder
- Full width wardrobe with mirrored sliding doors
- Egress bedroom window

EXTERIOR

- * Square front pop-out front end elevation
- * Vertical Exterior Siding LP Smart Panel
- Architectural shingled roof
- Rear door with window, mini blind, and deadbolt
- Exterior lights at each door
- White vinyl framed, low "E", dual glaze windows
- White aluminum framed dual glaze sliding glass door
- Front eave overhang
- Exterior GFI receptacle by sliding glass door

MECHANICAL

- * 20-gallon fast recovery electric water heater with exterior access door
- * R-11 fiberglass floor insulation
- * R-11 fiberglass sidewall insulation
- * R-22 cellulose blown insulation
- PEX waterlines with low point drain
- UL. approved electrical devices throughout
- 50-amp exterior main panel service with 25' supply cord
- Easy touch rocker light switches throughout
- Black iron gas pipe run to rear of unit
- Under sink waterline shut-off valves
- Interior water heater switch on electric water heater
- Pre-wire for ceiling fan in living room and bedroom

CONSTRUCTION

- Full 10" I-beam chassis construction
- Transverse 2" x 6" floor joists
- Detachable hitch from main chassis
- Woven simplex underbelly material
- 8' x 12' high density floor decking
- 2" x 4" sidewalls 16" O.C.
- Pre-engineered scissor trusses 16" O.C.
- 8-strand wire for on-site HVAC
- 30 gauge steel strapping for truss to sidewall and floor to sidewall strength
- RVIA / ANSI 119.5 approved

* Series Specific Standard Features

