

SPORTSMEN SPORTSTER

by **KZ**

TRAVEL TRAILER & FIFTH WHEEL TOY HAULERS



Sportsmen Sportster is an extremely versatile toy hauler designed by outdoor enthusiasts *for* outdoor enthusiasts, no matter what their interests might be. Sportster's floorplans include travel trailers as well as fifth wheels, in a wide variety of lengths, weights and interior configurations.



30TH12 | Harvest décor

Kitchens include beautiful, spacious cabinetry, generous countertop space, double-bowl sink with high-rise faucet and sink covers, as well as a complete appliance package and large overhead cabinets.



The featured 30TH12 travel trailer comes standard with a 60" by 75" queen bed, but is shown here with the same size Murphy bed option, which folds away when not needed and includes a folding sofa. Side closets and overhead cabinets offer substantial storage opportunities.



This demonstrates the Murphy bed folded up, thus allowing additional sofa use.



Shown is the 30TH12 bath, but all Sportsters provide a large, private bath with shower or tub and surround, acrylic sink and generous storage.

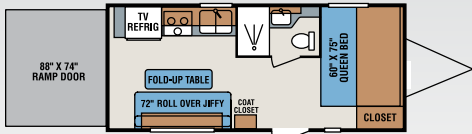


Sportster's main living spaces boast huge windows for excellent lighting and views, roomy dining areas that offer storage underneath and convert to additional sleeping spaces, and overhead storage areas.

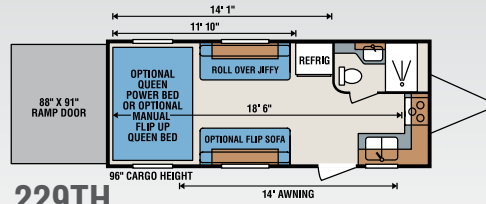


Since Sportster is officially a toy hauler, you can of course store your toys in the garage area, but it's really a multi-purpose room with giant picture windows, perfect for sleeping, eating, providing additional storage, and playing games with family and friends.

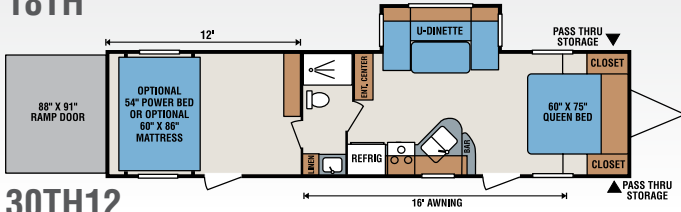
TRAVEL TRAILER TOY HAULERS



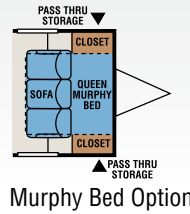
18TH



229TH

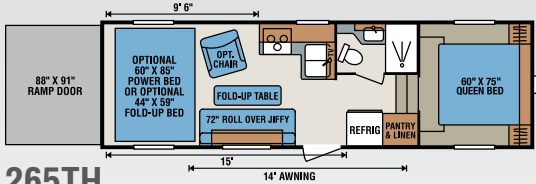


30TH12

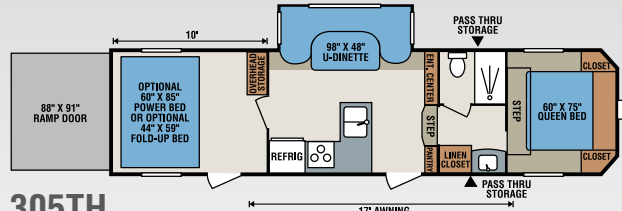


Murphy Bed Option

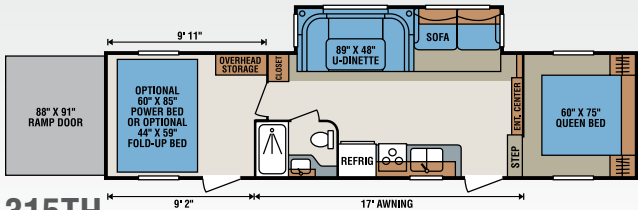
FIFTH WHEEL TOY HAULERS



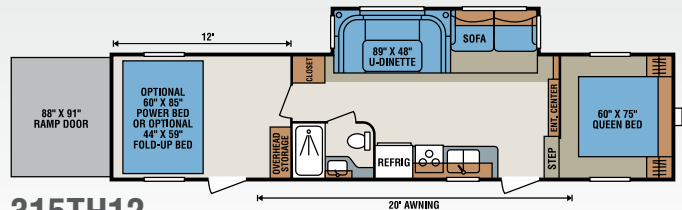
265TH



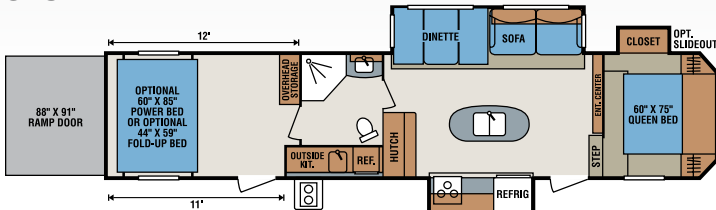
305TH



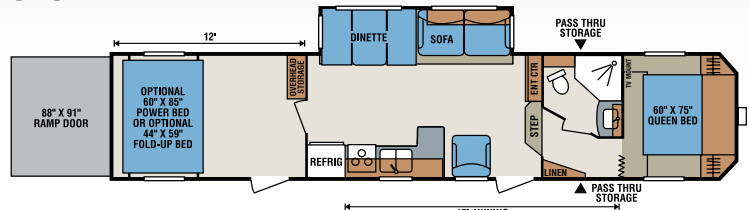
315TH



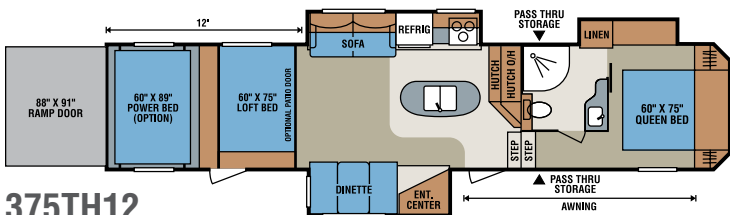
315TH12



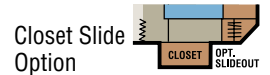
355TH12



365TH12



375TH12



Closet Slide Option

Toy Haulers	18TH	229TH	30TH12	265TH	305TH	315TH	315TH12	355TH12	365TH12	375TH12
UVW (Unloaded Vehicle Weight)*	4,000	4,570	7,180	6,088	7,590	8,080	8,420	9,750	9,430	TBD
Dry Hitch Weight*	550	860	1,160	1,356	1,370	1,590	1,700	1,900	1,940	TBD
Dry Axle Weight*	3,450	3,710	6,020	4,732	6,220	6,490	6,720	7,850	7,490	TBD
NCC (Net Carrying Capacity)	3,000	2,430	2,820	2,712	3,410	2,920	2,580	3,450	3,570	TBD
GVWR	7,000	7,000	10,000	8,800	11,000	11,000	11,000	13,200	13,000	TBD
Interior Height	78"	96"	96"	91"	92"	91"	96"	92"	92"	TBD
Exterior Height	10' 4"	11' 2"	N/A	12' 2"	12' 3"	12' 2"	13' 2"	12' 7"	12' 7"	TBD
Exterior Width	96"	96"	96"	96"	96"	96"	96"	96"	96"	TBD
Exterior Length	21' 10"	24' 5 1/2"	36' 2"	28' 6"	33' 8"	35' 2"	37' 11"	39' 11"	40' 7"	TBD
Refrigerator (cu. feet)	5	5	5	5	5	5	5	6	5	TBD
Water Heater Cap. (gal. G/E w/DSI)	6	6	6	6	6	6	6	6	6	TBD
Fresh Water Cap. (gal.)	38	38	75	75	75	75	75	75	75	TBD
Waste Water Cap. (gal.)	32	32	32	32	57	32	32	32	57	TBD
Gray Water Cap. (gal.)	32	32	32	32	57	32	32	56	57	TBD
LP Gas Cap. (lbs.)	40	40	40	40	40	40	40	40	40	TBD
Furnace BTUs (1,000s)	16	16	25	25	30	25	25	30	30	TBD
Tire Size	14"	14"	15"	15"	15"	15"	15"	15"	15"	TBD
Awning	13'	14'	16'	14'	17'	17'	20'	13' **	17'	TBD

*This weight reflects the rolling average unit weight for each model. Your trailer weight will vary according to optional equipment. **355TH12 also available with optional 17' awning.



The 355TH12 is a great spokesman for Sportster's fifth wheel group. First thing you notice are the huge picture windows, which offer cross ventilation, lighting and unbelievable views. Five-inch dinette cushions are standard, and dining areas offer additional sleeping space.



Kitchens boast generous countertop space and storage galore. Island models provide even more storage opportunities and floorplan flexibility.



Almost any size TV will fit in Sportster's entertainment center, which includes an AM/FM/CD player and storage above and below.



All Sportster fifth wheels offer roomy bath areas with ample storage and counter space. Bedrooms include an extremely comfortable 60" by 75" queen mattress, designer headboard and excellent clothes storage areas. The 355TH12 offers an optional closet slide (shown).



The 355TH12 offers an outside kitchen with refrigerator, sink, over/under storage and pullout camp stove.

355TH12 | Brindle décor



(Above) Optional dual power beds allow for additional sleeping and storage.

(Right) Ramp transitions include a beaver tail for easy loading.



Standards

- 3/8" Fully Walk On Roof w/ SuperFlex Roofing Material
- 5/8" Tongue & Groove Plywood Floor
- 3 Burner Cooktop
- 5 Cubic Foot Refrigerator
- 6 Gallon Gas DSI Water Heater
- 8 Tie Down Rings
- 20# Gas Bottles
- 30 Amp Service
- 13,500 BTU AC
- Acrylic Sink
- AM/FM/CD Player
- Awning w/Drip Rail & Spouts
- Built-In Medicine Cabinet w/Mirror in Bathroom
- Cable Hook Up
- Designer Match Box Style Valances
- Enclosed Pin Box on Fifth Wheel
- Enclosed Underbelly (N/A on 229TH, 265TH)
- Extra Large Baggage Doors
- Heated Underbelly
- High Rise Faucet
- Large Overhead Cabinets
- LED Interior Lighting
- LED Light in Pass Thru Storage
- Microwave w/Turntable
- Mini Blinds
- Monitor Panel

- Patio Door Light
- Power Vent in Bathroom
- Queen Mattress
- Radius Entry Door
- Radius Truss Rafters
- Range Hood w/12V Light & Exhaust Fan
- Roller Ball Bearing Drawer Guides
- Self-Adjust Brakes
- Sink Cover
- Smooth Screwless Baggage Doors
- Solid Wood Framed Mortise & Tenon Cabinet Doors
- Tinted Safety Glass Windows
- Tub Surround
- Tuff Ply in Cargo Area (N/A on 229TH & 265TH)
- TV Antenna w/Booster

Options

- 2nd Flip Jiffy (229TH & 265TH Only)
- 2nd Lighted Power Awning (355TH)
- 4.0 Generator (Requires Fuel Cell)(TT)
- 5.5 Generator (Fifth Wheels Only)
- 8 Cubic Foot Refrigerator
- Aluminum Wheels
- Chair – 1 or 2 (N/A w/Jiffy)
- Closet Slide (355TH, 365TH)
- Cotton Cloud Deep Quilt,

- Gel Foam Mattress
- Diamond Plate Threshold
- Double Power Beds (Where Available)
- Exterior Ladder
- Flip Up Full Size Bed (N/A w/Power Bed)
- Fuel Cell & Pump Station (N/A on 229TH)
- Generator Preparation (N/A on 229TH) (Requires Fuel Cell)
- Multi-Directional Lighted Power Awning
- Outside Grill
- Power Bed (N/A w/Flip Up Bed)
- Pull Down Screen Wall
- Sit-N-Sleep w/Upper Bed (Where Available)
- Solid Surface Counter Tops
- Spare Tire
- Wired for 2nd A/C w/ 50 Amp Service

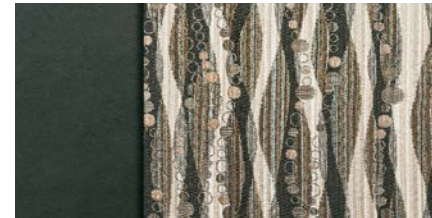
Standard Run Package

- 2 Exterior Speakers
- 6 Cubic Foot Refrigerator
- 30# Bottle w/Cover
- Gas/Electric DSI Water Heater
- Large Fold Out Assist Grab Handle
- Outside Shower (Where Available)
- Oven

- Skylight (Where Available)
- Stabilizer Jacks – 2 or 4
- Windows in Slideout (Where Available)
- Winter Bypass Kit

Touring Run Package

- Black Tank Flush
- DVD Player
- Night Shades
- Power Awning
- Skylight in Kitchen
- Tongue Jack
- Spare Tire Carrier



Brindle Décor



Harvest Décor



RVIA



985 N 900 W • Shipshewana, IN 46565
E-mail kz@kz-rv.com • www.kz-rv.com

Due to continual research and advances, manufacturer reserves the right to change specifications, design, price and equipment without notice, and assumes no responsibility for any error in this literature. Some items shown are not included as standard or optional equipment. ©2015KZ | 11/17/15 | 30M