

SPORTSMEN® Show Stopper

Travel Trailers



S314BHKSS shown in early 2016 Cocoa décor



Sportsmen Show Stopper

| Travel Trailers | S190SRBSS | S242SBHSS | S270RKSS | S280BHSS | S281RLSS | S291IKSS | S314BHSS | S314BHKSS |
|------------------------------------|-----------|-----------|----------|----------|----------|----------|----------|-----------|
| UVW (Unloaded Vehicle Weight)* | 4,510 | 4,480 | 5,110 | 5,450 | 5,530 | 6,080 | 6,010 | 6,210 |
| Dry Hitch Weight* | 520 | 540 | 500 | 680 | 630 | 840 | 690 | 600 |
| Dry Axle Weight* | 3,990 | 3,940 | 4,610 | 4,770 | 4,900 | 5,240 | 5,320 | 5,610 |
| NCC (Net Carrying Capacity) | 1,490 | 1,520 | 1,890 | 1,550 | 1,470 | 2,720 | 1,990 | 1,790 |
| GVWR | 6,000 | 6,000 | 7,000 | 7,000 | 7,000 | 8,800 | 8,000 | 8,000 |
| Interior Height | 78" | 78" | 78" | 78" | 78" | 78" | 78" | 78" |
| Exterior Height w/ A/C | 10' 11" | 10' 1" | 10' 7" | 10' 8" | 10' 7" | 10' 11" | 11' | 11' |
| Exterior Width | 96" | 96" | 96" | 96" | 96" | 96" | 96" | 96" |
| Exterior Length | 24' 2" | 26' 6" | 28' 8" | 30' 9" | 29' 9" | 32' 4" | 32' 10" | 32' 10" |
| Refrigerator (cu. feet) | 6 | 6 | 6 | 6 | 6 | 6 | 6 | 6 |
| Water Heater Cap. (gal. G/E w/DSI) | 6 | 6 | 6 | 6 | 6 | 6 | 6 | 6 |
| Fresh Water Cap. (gal.) | 40 | 40 | 40 | 40 | 40 | 40 | 40 | 40 |
| Waste Water Cap. (gal.) | 32 | 32 | 32 | 32 | 32 | 32 | 32 | 32 |
| Gray Water Cap. (gal.) | 32 | 32 | 32 | 32 | 32 | 32 | 32 | 32 |
| LP Gas Cap. (lbs.) | 40 | 40 | 40 | 40 | 40 | 40 | 40 | 40 |
| Furnace BTUs (1,000s) | 20 | 20 | 25 | 25 | 25 | 25 | 25 | 25 |
| Tire Size | 14" | 14" | 14" | 14" | 14" | 15" | 15" | 15" |
| Awning | 15' | 18' | 16' | 15' | 15' | 16' | 16' | 16' |

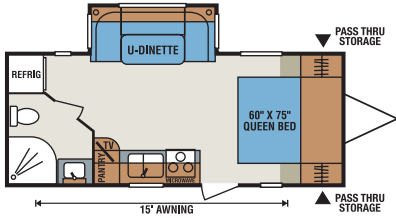
*This weight reflects the rolling average unit weight for each model. Your trailer weight will vary according to optional equipment.

Sportsmen Show Stopper LE

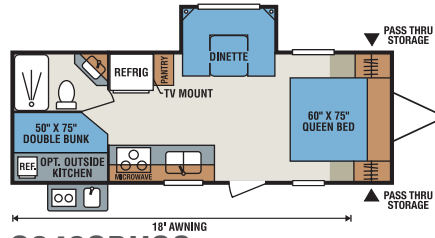
| Travel Trailers | S242SBHSS | S270RKSS | S280BHSS | S281RLSS | S291IKSS | S314BHSS | S314BHKSS |
|------------------------------------|-----------|----------|----------|----------|----------|----------|-----------|
| UVW (Unloaded Vehicle Weight)* | 4,628 | 5,070 | 5,290 | 5,410 | 6,170 | 6,210 | 6,240 |
| Dry Hitch Weight* | 579 | 500 | 710 | 670 | 880 | 650 | 630 |
| Dry Axle Weight* | 4,049 | 4,570 | 4,580 | 4,740 | 5,290 | 5,560 | 5,610 |
| NCC (Net Carrying Capacity) | 1,372 | 1,930 | 1,710 | 1,590 | 2,630 | 1,790 | 1,760 |
| GVWR | 6,000 | 7,000 | 7,000 | 7,000 | 8,800 | 8,000 | 8,000 |
| Interior Height | 78" | 78" | 78" | 78" | 78" | 78" | 78" |
| Exterior Height w/ A/C | 10' 1" | 10' 8" | 10' 7" | 10' 7" | 10' 7" | 11' | 11' |
| Exterior Width | 96" | 96" | 96" | 96" | 96" | 96" | 96" |
| Exterior Length | 26' 9" | 28' 6" | 30' 9" | 29' 9" | 32' 4" | 32' 10" | 32' 10" |
| Refrigerator (cu. feet) | 6 | 6 | 6 | 6 | 6 | 6 | 6 |
| Water Heater Cap. (gal. G/E w/DSI) | 6 | 6 | 6 | 6 | 6 | 6 | 6 |
| Fresh Water Cap. (gal.) | 38 | 38 | 38 | 38 | 38 | 40 | 40 |
| Waste Water Cap. (gal.) | 32 | 32 | 32 | 32 | 38 | 32 | 32 |
| Gray Water Cap. (gal.) | 32 | 32 | 32 | 32 | 38 | 32 | 32 |
| LP Gas Cap. (lbs.) | 40 | 40 | 40 | 40 | 40 | 40 | 40 |
| Furnace BTUs (1,000s) | 20 | 25 | 25 | 25 | 25 | 25 | 25 |
| Tire Size | 14" | 14" | 14" | 14" | 15" | 15" | 15" |
| Awning | 18' | 16' | 15' | 15' | 16' | 16' | 16' |

*This weight reflects the rolling average unit weight for each model. Your trailer weight will vary according to optional equipment.

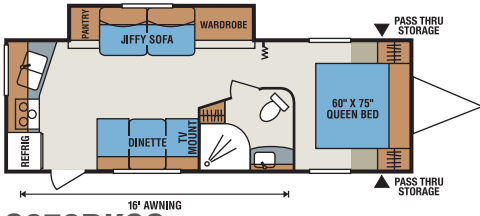
Sportsmen Show Stopper & Show Stopper LE



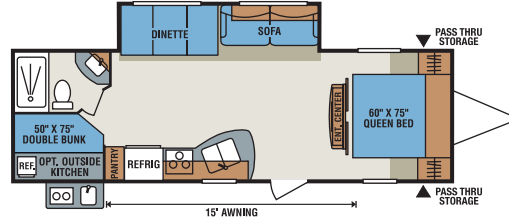
S190SRBSS



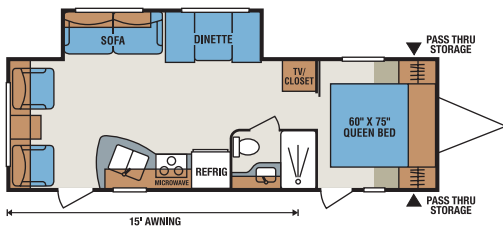
S242SBHSS



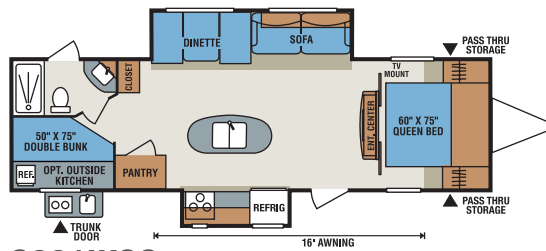
S270RKSS



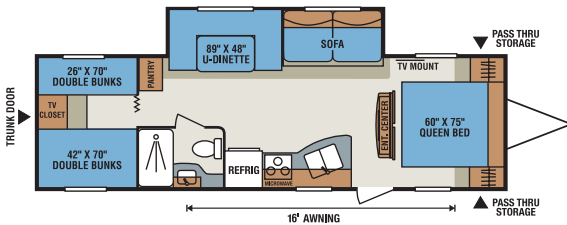
S280BHSS



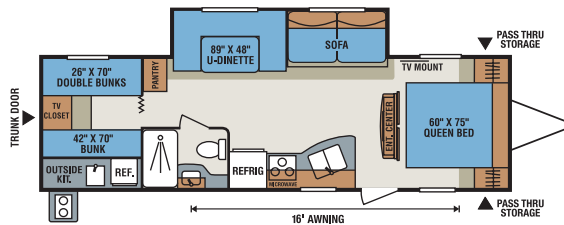
S281RLSS



S291IKSS



S314BHSS



S314BHKSS

**2016
Décor**



Rustic

Standards

- 3/8" Fully Walk On Roof w/ SuperFlex Roofing Material
- 1 Piece Seamless Roof
- 4 Stabilizer Jacks
- 6 Cubic Foot Refrigerator
- 6 Gallon Gas/Electric Water Heater
- 20 lb. Gas Bottles
- 30 Amp Service
- 13,500 BTU A/C
- Acrylic Sink w/High-Rise Faucet
- AM/FM/CD Player
- Awning w/Drip Rail & Spouts

- Built-In Medicine Cabinet w/Mirror in Bath
- Cable Hook Up
- Diamond Plate Rock Guard
- Extra Large Radius Baggage Doors
- Fiberglass Exterior (N/A on LE)
- Large Overhead Cabinets
- LED Interior Lighting
- Linoleum From Front to Rear
- Microwave w/Turntable
- Mini Blinds
- Monitor Panel
- Oven

- Patio Door Light
- Power Vent in Bath
- Queen Mattress
- R7 Insulation
- Radius Entry Door
- Radius Truss Roof Rafters
- Range Hood w/12V Light & Exhaust Fan
- Rear Bumper w/Sewer Hose Storage
- Reversible Quilted Comforter
- Roller Ball Bearing Drawer Guides
- Tinted Windows

- Tub Surround
- TV Antenna w/Booster
- Water Heater Bypass Kit

Options

- Exterior Speakers
- Lighted Power Tongue Jack
- Multi-Directional Lighted Power Awning (Forced Option on S291IKSS)
- Outside Kitchen (Where Available)
- Spare Tire/Carrier
- Stereo w/DVD & Bluetooth



985 N 900 W • Shpshewana, IN 46565
E-mail kz@kz-rv.com • www.kz-rv.com

Due to continual research and advances, manufacturer reserves the right to change specifications, design, price and equipment without notice, and assumes no responsibility for any error in this literature. Some items shown are not included as standard or optional equipment.

Dealer: