

ZEPHYR®

2015



TIFFIN
MOTORHOMES



2015 ZEPHYR

For the ultimate in luxury, no other coach in its class even comes close.

IT'S IMPOSSIBLE TO INTRODUCE THE 2015 ZEPHYR BY TIFFIN WITHOUT SUPERLATIVES.

How else to describe the most luxurious, the most powerful, the most spacious coach that our company has ever built? Top to bottom, the Zephyr embodies everything we've learned over forty years of luxury motorhome design, construction, and engineering. Packed with features and amenities not found in our other models, this is the coach for luxury lovers who want a million dollar motorhome but without the matching price tag. To see Tiffin at our finest, take a look at the 2015 Zephyr.



SHOWN 45 TZ FLOOR PLAN WITH WHITE MAHOGANY EXTERIOR



RIDE

The command center awaits your every command.

Welcome to the ultimate power trip, courtesy of a Cummins ISX 11.9-liter 500 HP engine capable of propelling a 45' coach while towing up to 15,000 lb. At your service is a buffet of instrumentation, along with an army of controls on the VIP Smart Wheel. Minding your comfort levels are adjustable accelerator and brake pedals, assisted by deeply cushioned six-way power seats for captain and co-pilot. For maximum stability, front seats are steel-bolted to a Spartan K2 chassis.

SMOOTH RIDE

Six-point Spartan air bag system, independent front suspension, and responsive Allison 4000 MH transmission work in tandem to deliver a smooth quiet ride, even when accelerating on a merge ramp or climbing two-mile grades through the mountains.

DUAL LEVELING SYSTEMS

A push of a button activates an electronic air leveling system. Completely automated, the system balances the coach on an even plane by adjusting pressure in the air suspension. If the surface is too uneven for air leveling, call upon your back-up system, the automatic hydraulic leveling jacks.

PASSENGER COMFORT

Co-piloting the Zephyr offers its own rewards. An in-dash computer workstation slides in place to support a laptop, while the passenger's chair footrest invites you to put your feet up. Overhead fans, map lights, and dash drawers are within easy reach during the journey.

SHOWN 45 TZ FLOOR PLAN WITH GLAZED CHERRY CABINETS AND SONATA INTERIOR



SIX WAY DRIVER/PASSENGER SEATS



HIGH-DEFINITION REAR/SIDE MONITOR



FRONT OVERHEAD TV

FLOOR PLANS

With so many thoughtful features, our floor plans are now called MORE plans.

The design of every Tiffin floor plan must meet four essential criteria:

- Maximum space.
- Optimal organization.
- Relaxation plus.
- Elegant atmosphere.

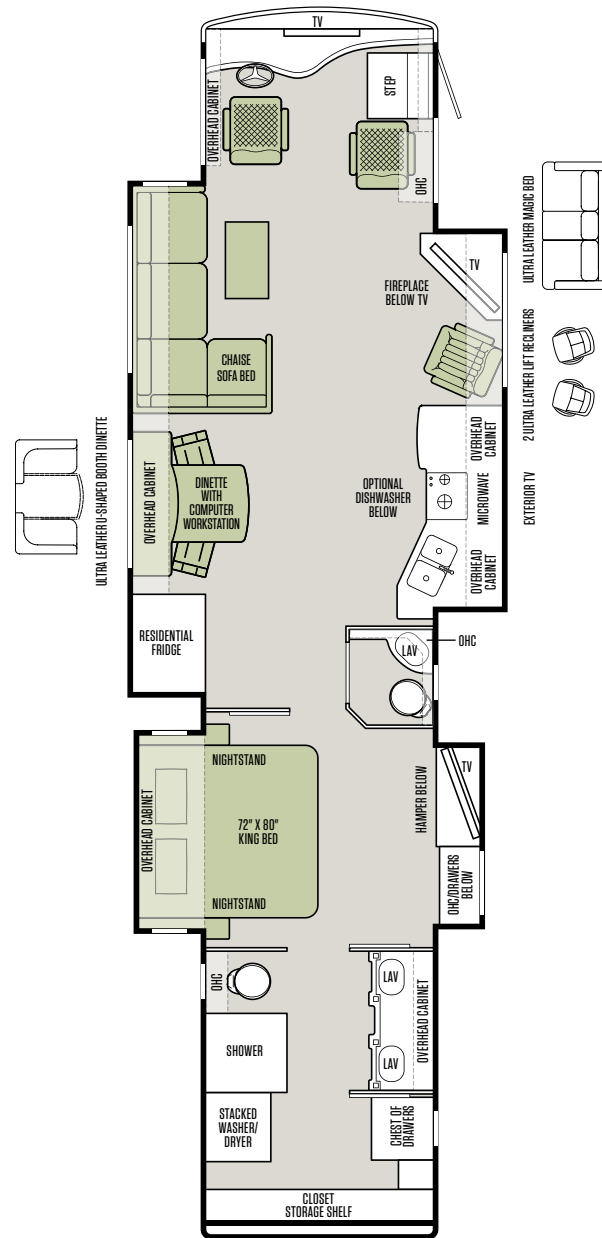
Together, they add up to offer your family the most comfortable and convenient layout for life on the road.

TIFFIN INNOVATION: EXTRAORDINAIRE™ AC SYSTEM

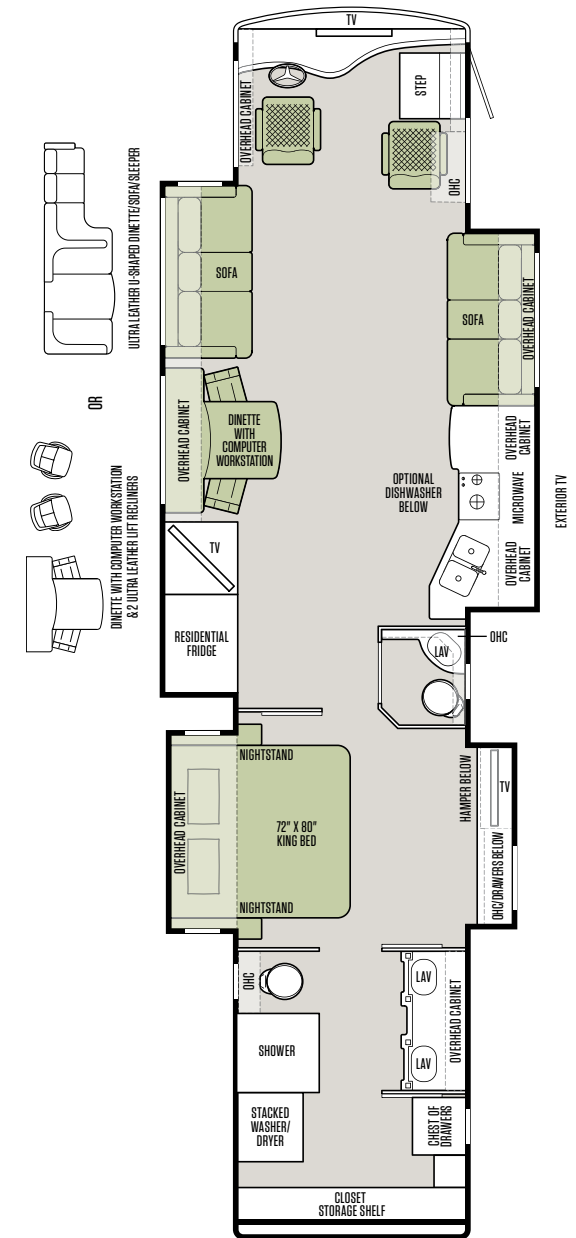
The interior ambiance in your Tiffin coach is enhanced by a state-of-the-art heating and cooling method, developed by Tiffin engineers for exclusive use in our luxury coaches. Modeled on residential-style systems, it uses adjustable registers and return vents placed the length of the ceiling to keep the airflow moving in a circular pattern to maintain your desired interior temperature. Whisper quiet and incredibly efficient, it easily lives up to its name — Extraordinaire.



45 DZ



45 TZ



WARRANTY

You won't find a better warranty because you won't find a better-built coach.

The Tiffin Five-Star Warranty.
The best in the business, bar none.



At Tiffin Motorhomes, we build for quality first and foremost, limiting our production to just 12 coaches a day to ensure meticulous craftsmanship. It may not be the most business-savvy way to run a company but it is the best way. By investing the time and effort to do things right, we want you, as a Tiffin owner, to have the utmost confidence in your coach, as well as a peace of mind you won't find with other manufacturers. You see, not only do we stand proudly behind our product, we stand behind you as well.

★ 10

YEAR
CONSTRUCTION
WARRANTY

The structural integrity of the welded frame of entire coach is warranted for 10 years.

★ 5

YEAR
DELAMINATION
WARRANTY

We guarantee against all exterior fiberglass delamination or wall separation for 5 years.

★ 1

YEAR
COMPREHENSIVE
WARRANTY

Your coach is warranted against defects in materials and workmanship for 12 months, or 12,000 miles of use.

★ 1

YEAR
COACH ROADSIDE
SERVICES

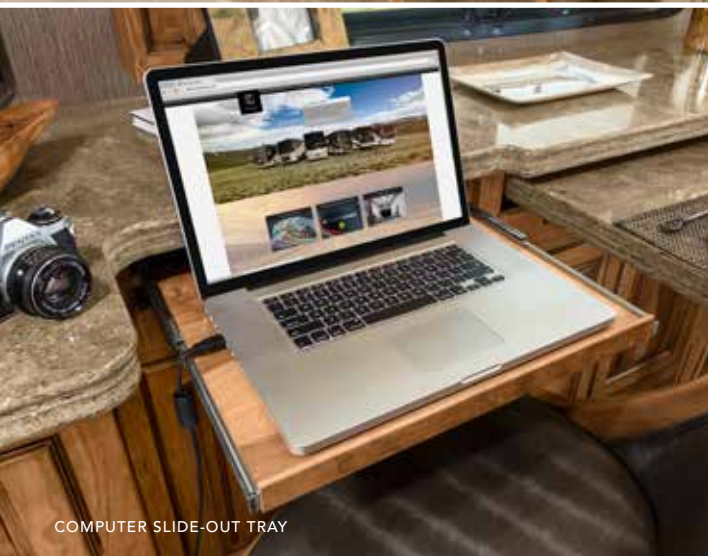
Available through Coach-Net, the country's largest RV emergency road service, this program provides 24/7 access to responsive roadside and technical assistance.

★ Ongoing
Owner
Support

No other motorhome company can compare with Tiffin's exceptional customer service. Email us at service@tiffinmotorhomes.com or call us at **256/356.0261**.



DINETTE WITH BUILT-IN STORAGE CABINETS



COMPUTER SLIDE-OUT TRAY



ULTRA LEATHER CHAISE SOFA SLEEPER

LIVE

Even with the blinds closed, the scenery is breathtaking.

An aura of elegant ease fills the Zephyr's luxurious interiors, the perfect atmosphere for relaxed travel. The living room redefines spaciousness, with 7' ceilings and depth of 13' with slide-outs extended. Tiffin's attention to detail is on display everywhere, from richly hued designer fabrics and plush furniture to the polished porcelain tile floor. Triple terraced crown moldings accent the room, as does a multitude of handcrafted cabinetry.

SUPERIOR CONSTRUCTION

There's a sense of tranquility inside the Zephyr. This peace and quiet is the result of superior construction that delivers ultimate protection from the elements. Exterior walls are made from gel-coated fiberglass, as is the seamless molded roof cap, a Tiffin innovation. Tiffin-engineered double-paned windows silence noise, as well as insulate against temperature fluctuations.

THOUGHTFUL DESIGN

Conveniences highlight the Zephyr's interiors. A central control panel offers motorized command of solar and privacy shades in the living and galley area. The elegant sofa transforms into a comfortable queen-sized bed, while a dinette easily converts into a tailor-made computer workstation.



TIFFIN STORE-IT-ALL™ ASSURANCE

The 2015 Zephyr offers Store-It-All Assurance, Tiffin's desire to exceed competitors in storage capacity, a needed commodity in any motorhome. Deeper than industry standards, our cabinets feature adjustable shelving and sliding compartments for better organization. Drawers are outfitted with full extension metal slides to pull completely open. All cabinetry is handcrafted from solid unblemished hardwood and features Tiffin's trademark fit-and-finish detailing.

SHOWN 45 TZ FLOOR PLAN WITH GLAZED CHERRY CABINETS AND SONATA INTERIOR





TAKE A CLOSER LOOK AT THE ZEPHYR COMPLETE 360 INTERIORS



DINE

All the comforts of home. And then some.

A merger of high-tech and high-efficiency, the Zephyr kitchen is well equipped for a modern chef-on-the-go. The star of the all-electric galley is a sleek induction cooktop, delivering flavor-enhancing speed and precision. Countertops are in generous supply, with the innovative Expand-an-island on hand to add more elbowroom, when needed, to the food prep area. Solid surface sinks lend elegance and the convenience of two bowls, while a burnished stainless steel residential refrigerator ensures groceries are well stocked.

INDUCTION COOKTOP

Beautiful functionality of an electric induction cooktop blends seamlessly with the solid surface countertops for a streamlined silhouette. With no open flame or released gas, the cooktop remains fairly cool to the touch with the majority of heat transferring to the cookware.

ALL-ELECTRIC COACH

Electricity is supplied via a network of power sources, including a Magnum 3000 watt sine wave inverter, 50 amp service, 12.5 kw Onan® Generator, and two solar panels. An energy management system regulates usage, ensuring efficiency and continuous output.

HAND CRAFTED DÉCOR

Mosaic-tile backsplashes and high-gloss cherry wood cabinets evoke a charming ambiance in the galley. All tile and woodwork in the Zephyr is meticulously handcrafted by skilled artisans, including the polished porcelain tile floor throughout the coach.

SHOWN 45 TZ FLOOR PLAN WITH GLAZED CHERRY CABINETS AND SONATA INTERIOR



STAINLESS STEEL REFRIGERATOR WITH ICE & WATER DISPENSER



EXPAND-AN-ISLAND



INDUCTION TWO-BURNER COOKTOP



WALK-IN CLOSET WITH DRESSER



STONE DOUBLE SINKS



MOSAIC TILE SHOWER

MIDSECTION HALF-BATH

REST

A master suite so luxurious you'll be dreaming of bedtime.

At the end of the day, retire to your personal oasis, the sumptuous master suite. Close the door, draw the shades, and enjoy total privacy, as well as the lavish comforts of premium bedding, spacious bathing quarters, and generous storage. Every comfort has been considered, with full-length mirrors, vanity with built-in drawers, laundry center with stacked washer and dryer, and a 4' x 8' walk-in wardrobe closet, an unheard-of luxury for motorhome living.

EXTRA TOUCHES

The centerpiece of your suite is a regal cherry headboard made for a king mattress that is available in your choice of Select Comfort or Memory Foam. Also on hand is Tiffin's Extraordinaire™ AC system that creates the perfect climate for a refreshing night's sleep. A switch on the bedside table lets you add the breeze of a ceiling fan.

REFRESH

For your convenience, the coach is equipped with two lavatories, allowing you to reserve the en-suite bathroom for your private use and the other, located in the midsection, for guests. The master bath is beautifully furnished, with solid surface sinks and an impressive mosaic tile shower.



AQUA-HOT™

The ultimate on-the-road luxury, a diesel-fueled hydronic heating system delivers unlimited hot water and evenly distributes heat throughout interiors and basement.

SHOWN 45 TZ FLOOR PLAN WITH GLAZED CHERRY CABINETS AND SONATA INTERIOR





INTERIOR DÉCOR

With upscale finishings and intricate design details, Tiffin Motorhomes sets the standard for interior luxury in the motorhome industry, providing a beautiful backdrop personalized to your taste. For the 2015 Zephyr, choose between the exclusive Cosmopolitan and Sonata interior fabric suites. Both designed to complement the hardwood cabinetry built by hand by our Red Bay craftsmen, as well as your personal decorative touches. View larger images of interior design swatches, on tiffinmotorhomes.com.

CABINETS



CHERRY WOOD



NATURAL CHERRY



GLAZED CANYON CHERRY



GLAZED CHERRY



GLAZED HONEY



WHITE CHOCOLATE (BATH)*

COSMOPOLITAN FABRIC SUITE Fabrics by Ralph Lauren®

LIVING AREA



PILLOW



VALANCE

BACKSPLASH & COUNTERTOP



BEDROOM



SONATA FABRIC SUITE

LIVING AREA



PILLOW



VALANCE

BACKSPLASH & COUNTERTOP



BEDROOM



FLOORING



STANDARD TILE



OPTIONAL TILE



CARPET

*Not available with Cherry Wood or Natural Cherry finishes.

Zephyr cabinet doors are made of solid wood, & all cabinet finishes are available in combination with any fabric suite. All options may not be available in every model. Because of progressive improvements, specifications, standard & optional equipment are subject to change without notice or obligation. For a complete & up-to-date list of available options and specifications, visit tiffinmotorhomes.com

SPECIFICATIONS

KITCHEN

STANDARD ON ALL MODELS:

- Solid Surface Countertops and Splash Guards
- Stainless Steel Residential Refrigerator
- Induction Cooktop
- Integrated Solid Surface Galley Sink with Solid Surface Covers
- Expand-an-island
- Ceramic Tile Backsplash with Decorative Inlays
- Stainless Steel Convection Microwave with Exterior Venting
- Power Solar & Privacy Shades & Hardwood Valance
- Built-in Soap Dispenser

AVAILABLE OPTIONS:

AVAILABLE OPTIONS:	45 DZ	45 TZ
Dishwasher (Drawer Type)	O	O

BATH

STANDARD ON ALL MODELS:

- Two Rectangular Lavatory Sinks with Soap Dispensers
- Dual Medicine Cabinets
- Elongated Ceramic Toilet with Electric Flush
- Towel Holders & Lavatory Accessories Package
- Decorative Pocket Doors
- Stacked Washer/Dryer in Rear Wardrobe
- Laundry Center with Storage & Drawers in Rear Wardrobe
- Skylight in Shower & LED Light
- Hand-held Shower with On/Off Switch
- Solid Surface Shower Walls with Inlaid Tile & Residential Glass Door

BEDROOM

STANDARD ON ALL MODELS:

- TV
- Dual Control Air Comfort King Mattress (72" x 80") with Nightstands
- Under Bed Storage
- Solar & Privacy Shades
- DVD System & Satellite Receiver with Direct TV® (Requires Subscription)
- Vanity with Built-in Drawers
- Decorative Hardwood & Wrought Iron Ceiling Ring
- Ceiling Fan
- Security Safe

AVAILABLE OPTIONS:

AVAILABLE OPTIONS:	45 DZ	45 TZ
Memory Foam King Mattress (72" x 80")	O	O

LIVING AREA/DINETTE

STANDARD ON ALL MODELS:

- Dinette with Computer Workstation on Driver Side
- Decorative Ceiling Panel
- Home Theater Surround Sound System with Blu-ray™ Player
- Decorative Wall & Dinette Lighting Package
- Carbon Monoxide Detector
- TV in Front Living Area (45 DZ)
- TV in Midsection Entertainment Center (45 TZ)

AVAILABLE OPTIONS:

AVAILABLE OPTIONS:	45 DZ	45 TZ
Ultra Leather L-shaped Chaise Sofa/Sleeper on Driver Side	S	NA
Ultra Leather U-shaped Dinette on Driver Side	O	O
Ultra Leather Sofa/Booth Dinette Combo (excludes all additional furniture on Driver Side)	NA	O
Ultra Leather Magic Bed on Passenger Side	O	NA
Two Ultra Leather Lift Recliners on Driver Side	NA	O
Two Ultra Leather Lift Recliners on Passenger Side	O	NA
Freestanding Recliner/TV/Fireplace on Passenger Side	S	NA
Ultra Leather Hide-A-Bed on Passenger Side	NA	S

EXTERIOR DÉCOR

FULL-BODY PAINT SCHEMES



CINDERWOOD



RUSTIC CANYON



GOLD CORAL



SILVER SAND



MAROON CORAL



SUNLIT SAND



ROCKY MOUNTAIN BROWN



WHITE MAHOGANY

PREMIUM PAINT SYSTEM

Our eight-step full-body paint system features premium grade BASF paints sealed with four layers of superclear coat with ultraviolet protection. An additional layer of scratch-resistant plastic coating protects the front of the coach, stairwell, and entry door lock.

SPECIFICATIONS

AUTOMOTIVE

STANDARD ON ALL MODELS:

- 500 HP @ 1,800 RPM Cummins ISX 11.9-liter Engine with 1,645 Torque @ 1,200 RPM
- Independent Front Suspension
- Allison 4000 MH Transmission
- Heavy Duty Rear Hitch with 15,000 lb Towing Capacity
- Six Aluminum Wheels Plus Two Steel Inner Wheels
- Two-stage Engine Brake
- VIP Smart Wheel
- Automatic Air Leveling System
- HWH – Hydraulic Leveling System
- Fog Lights

CHASSIS

SPARTAN K2 CHASSIS:

GAWR – Front	16,600 lb	Wheel Base	316" (292" from Front Axle to Drive Axle)
GAWR – Rear	20,000 lb	Tire Size	315/80R22.5
GVWR	48,600 lb	Fuel Tank (Gallons)	150
GCWR	63,600 lb	Alternator Amps	270
GVWR Tag Axle	12,000 lb	Trailer Hitch Capacity	15,000 lb

WEIGHTS & MEASURES

OVERALL:

Overall Length (Approximate)	44' 11"	Basement Storage (Cubic Feet – Approximate)	165
Overall Height with Roof Air (Maximum)	12' 10"	Fresh Water (Gallons)	90
Interior Height	84"	Black Water (Gallons)	50
Overall Width	101"	Grey Water (Gallons)	70
Interior Width	96"	Minimum Garage Height	13'

STRUCTURAL

STANDARD ON ALL MODELS:

- Steel Cockpit Overhead Support Frame
- Seamless One-piece Gel-coat Fiberglass Molded Roof Cap
- One-piece Molded Gel-coat Fiberglass Front & Rear Caps with Integrated Air Intake
- Gel-coat Fiberglass Outside Wall Panels
- Steel/Aluminum Laminated Sidewalls, Floor & Roof
- Laminated Floor Decking
- Insulated Roof Duct Laminated into Roof Construction
- Steel Basement Construction

COCKPIT

STANDARD ON ALL MODELS:

- Contemporary Wrap-around Vinyl-covered Dash
- Backlit Lettering for Dash Switches
- Built-in Driver & Passenger Consoles with Control Switches
- Six-way Power Driver & Passenger Seats including Passenger Power Footrest
- Adjustable Headrests on Driver & Passenger Seats
- Integrated Seat Belts
- Solid Surface Step Well with Recessed Lighting
- TV in Overhead Cockpit Area
- Computer Slide-out Tray in Dash with Lock-out Rails
- Built-in Storage Drawers in Dash
- Smart Wheel with Controls for ICC, Cruise, Windshield Wipers, High Beam/Low Beam, Stereo & Radio
- In-dash Navigation System with Smart Wheel Controls
- USB Dash Receptacle
- Adjustable Accelerator & Brake Pedals
- Power Steering
- Driver & Passenger Overhead Fans
- Driver & Passenger Map Lights
- Power Solar & Privacy Windshield Shades
- Driver Side Insulated Power Window
- Driver/Passenger Side Power Solar & Privacy Shades
- Dual 12 V Outlets in Dash Area (Driver)
- Satellite Radio (Requires Subscription)
- Color Rear-view Monitor System with Built-in Cameras & Mirrors
- Side-view Cameras Activated by Turn Signals
- 12 V Battery Power Disconnect
- Fire Extinguisher
- Rearview Mirror with Integrated Compass & Outside Temperature

SPECIFICATIONS

GENERAL INTERIOR

STANDARD ON ALL MODELS:

- Wall Mounted Thermostats
- 12 V Attic Fans with Hardwood Louvers & Wall Mounted Controls
- Cable TV Hook-up & Phone Jacks
- Solid Hardwood Raised Panel Doors
- Recessed Doors & Drawers
- Self-closing Ball Bearing Drawer Slides (Select Areas)
- Heated Tile Floor
- Padded Soft Touch Vinyl Ceiling
- Power Solar & Privacy Shades with Wall Mounted Controls (Day & Night)
- Porcelain Tile Flooring Throughout Coach
- Integrated Speakers with Hardwood Louvers
- LED Lighting
- Ceiling Flush Mounted Multi-lighting System
- Wall Mounted Switches for Lights & Accessories
- Rope Lights Beneath Bedroom Vanity Area & in Window Valances
- 50 Amp Electrical Distribution
- 12 V Breaker Panel
- Energy Management System
- Air Driven Step Well Cover
- Smoke Alarm
- GFI Outlets at Galley & Lavatories
- Lighted Interior Grab Handle at Entry Door
- Entertainment System with Blu-ray™ Player
- Complete Cable Wiring Interfacing with Surround Sound & Satellite Receiver
- Aqua-Hot™ Heating System with Continuous Hot Water
- Central Vacuum Cleaner System with VacPan
- SeeLevel Interior Tank Monitor
- All Electric Coach
- Extraordinaire™ AC System

GENERAL EXTERIOR

STANDARD ON ALL MODELS:

- One-piece Fiberglass Gel-coat Front & Rear Fenders
- Swing-up Fiberglass Gel-coat Engine Access Door
- One-piece Aluminum Face Swing-out Baggage Doors with Integrated Power Locks
- Pass-through Full Basement Storage
- Slide-out Storage Tray (Slides Out Both Sides)
- 12.5 kw Onan® Generator with Power Slide
- Phone, 120 V & 12 V Outlets Inside Storage Compartment
- Auto Generator Start System
- Eight House Batteries
- Three Low Profile Roof ACs with Heat Pumps
- Two Solar Panels
- Easy Hook-up Water Compartment with Built-in Hose Exits
- Multi-port Manifold System for Hot & Cold Water Lines
- Water Pump Switch at Galley, Lavatories & Water Service Compartment
- In-motion Satellite System*
- One-piece Panoramic Windshield
- Black Tank Flush System
- Water Filter
- Power Garden Hose Reel
- Outside Shower
- Air Horn
- Recessed LED Docking Lights
- Porch Light
- Lighted Exterior Grab Handle
- Deadbolt Entrance Door Lock
- SeeLevel Tank Monitor at Dump Station
- Keyless Entry System (Includes Exterior Compartment Doors)
- Basement & Outside Compartment Lights
- Custom Mud Flap
- Electric Power Cord Reel
- Exterior TV
- Carefree Paramount Awning (Three Positions)
- Front Cap Protective Coating
- Flush Mounted & Painted-frame Dual Pane Windows
- Rearview Heated Mirrors with Integrated Side-view Cameras
- Magnum 3000 Watt Sine Wave Inverter
- Basement Freezer
- Pre-wired for Winegard Trav'ler Satellite*

*High-definition programming is not available on a domed satellite antenna unless you subscribe to DISH Network®.

AVAILABLE OPTIONS:

AVAILABLE OPTIONS:	45 DZ	45 TZ
2nd Slide-out Tray	<input type="radio"/>	<input type="radio"/>
2nd Carefree Paramount Awning (Patio Side Only)	<input type="radio"/>	<input type="radio"/>



A family business built around yours.

Tiffin Motorhomes is proud to be one of the few family-owned manufacturers in the industry, and it makes a significant difference in how our company operates versus our competitors. For starters, with the Tiffin name on every coach, building a superior motorhome isn't just our occupation. It's a matter of personal pride, a pursuit we have committed our lives to perfecting.

Since we don't have shareholders looking over our shoulder, the only people we focus on making happy are folks like you. All the decisions we make, from using better parts to offering more thoughtful floor plans than anyone else, are based on what will result in a better motorhome, not a better dividend check. In fact, some decisions, like limiting production to 12 coaches a day to ensure quality craftsmanship, probably wouldn't sit too well with a corporate board of directors.

Also, when we say family-owned, that means family-operated, too. Tim Tiffin has been our General Manager for more than a decade, guiding the overall direction of our company. Van Tiffin oversees innovations as head of Research & Development, and Lex Tiffin's work with Supplier Relations helps us maintain our high standards. Of course, everyone knows our founder Bob, who is in the RV Industry Association's Hall of Fame and is still the first one at the plant every morning at 5:00 a.m.

As a family running a motorhome company, we understand families who own motorhomes. We know it's not just about where a coach will take you, but the experience you take from the journey. That's why every Tiffin motorhome is made to move you.

**LEFT TO RIGHT: TIM TIFFIN, VAN TIFFIN,
BOB TIFFIN, AND LEX TIFFIN**

GO TO TIFFINMOTORHOMES.COM

Visit us on the web for more information on the 2015 Zephyr and all 2015 Tiffin Motorhomes, along with the latest product and specification updates. Plus, watch videos and see other exclusive web content. You can also follow us on Facebook and Twitter.

FOR PARTS & SERVICE CALL [256/356.0261](tel:2563560261)

 [FACEBOOK.COM/TIFFINMOTORHOMES](https://www.facebook.com/tiffinmotorhomes)

 [TWITTER.COM/TIFFINMOTORHOME](https://twitter.com/tiffinmotorhome)

YOUR LOCAL TIFFIN DEALER: