

ALLEGRO BREEZE®

2015



TIFFIN
MOTORHOMES

2015 ALLEGRO BREEZE

Love at first drive.

ENJOY THE ROAD IN THE MOST COMPACT CLASS A DIESEL-PUSHER EVER PRODUCED.

You don't have to go big to ride in the lap of luxury these days, thanks to the lavishly compact 2015 Allegro Breeze from Tiffin Motorhomes. Introduced in 2009, the Breeze is a Tiffin innovation: the industry's first Class A model that is closer in size to a full-size SUV than a full-size RV. Perfect for first-time buyers or mobile nest downsizers, the Breeze lives up to its easygoing name, offering effortless handling, excellent maneuverability, and better mileage than other rear engine diesels. Compact as it is, though, the Breeze gives up nothing in luxury or features, delivering the same attention to style and comfort found on our larger, more expensive coaches. Like every motorhome that bears the Tiffin name, the Allegro Breeze is designed to please.



FOR ADDITIONAL CONTENT, download the free LAYAR app on your tablet or smartphone, and scan photos showing the LAYAR logo.



SHOWN 32 BR FLOOR PLAN WITH MAROON CORAL EXTERIOR



RIDE

Drives so easy
you'll forget it's
a motorhome.

Climb into the driver's seat of the Allegro Breeze and see the open road as never before. The nimble Breeze, available in your choice of 28' or 32' long, invites you to go anywhere and everywhere, including places other RV drivers would never dare. Navigate every mile with confidence, courtesy of the Breeze's adept maneuverability, a synergy of power steering, and PrecisionTrack independent front suspension. Driving the Breeze is, to quote *RV Magazine*, "nothing short of amazing."

PERFORMANCE

The Breeze is precision crafted for a smooth ride. The Navistar MaxxForce® 7 rear engine puts 240 horsepower @ 2,600 RPM at your command, ready to charge the highway with a press of the pedal or tow up to 4500 lb. A forward mounted fuel tank provides supportive weight distribution for safe and easy braking, even in hazardous road conditions. Four air bags built into the chassis create a cushion between you and the road, ensuring the most comfortable riding experience.

COMMAND

The cockpit puts everything for your driving comfort within easy reach. Customize the position of brake and fuel pedals with a press of a button. Adjust your posture at the wheel with a tilting and telescoping steering column. A one-piece shatter resistant windshield provides an unobstructed view of the road ahead. For additional vantage points, automated side and rear cameras deliver images of the traffic around you.

TIFFIN INNOVATION: PRECISIONTRACK™

One reason the Breeze is so easy to love (and drive) comes from its high-performance chassis, Tiffin's acclaimed PowerGlide®. Designed and built by Tiffin specifically for the Breeze, the PowerGlide excels in the essentials of a luxury coach foundation — durability, reliability, performance, and control. Unique to this chassis is PrecisionTrack, a merger of independent front suspension with an air ride system, enhancing steering control on tight turns and corners.



DRIVER COMPARTMENT



HIGH-DEFINITION REAR/SIDE MONITOR



SATELLITE-READY RADIO (INCLUDES USB PORT)

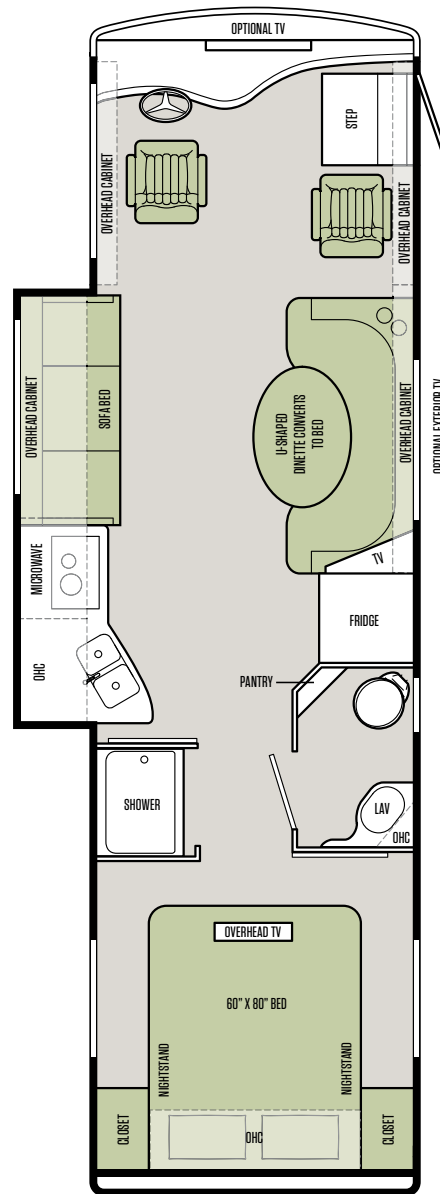
Live larger in a smaller size.

Tiffin's ongoing collaboration with customers is evident in our floor plans. Each is conceived to address specific needs of the RV lifestyle, with thoughtful details to make life on the road as comfortable as possible. Once you've decided on the right layout, customize your home with fabric and interior décor options. As always, all floor plans come with Tiffin's Store-It-All Assurance.

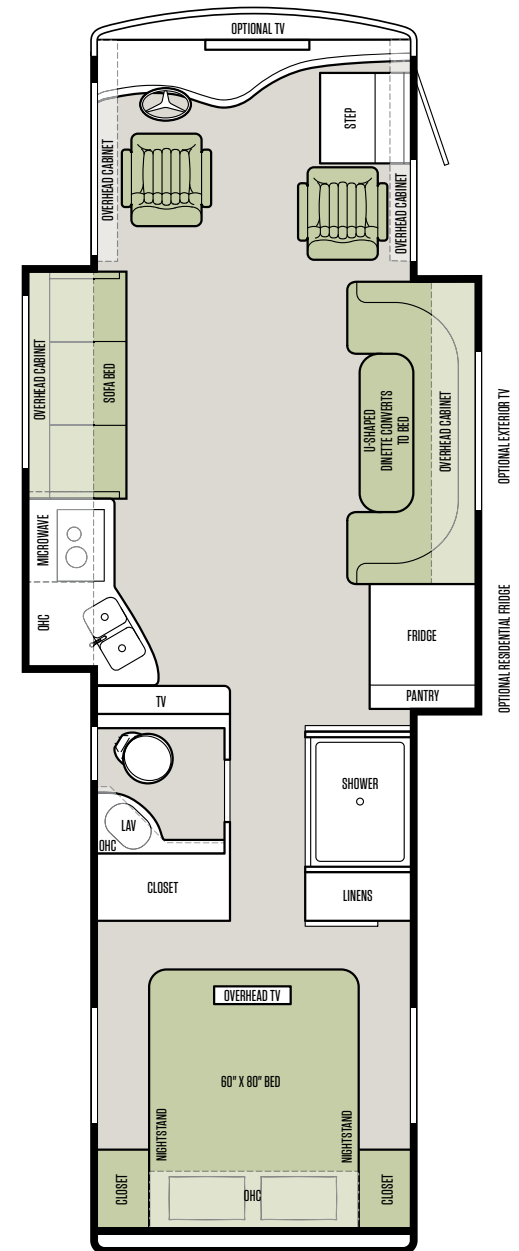
TIFFIN INNOVATION: EXTRAORDINAIRE™ AC SYSTEM

The interior ambiance in your Tiffin coach is enhanced by a state-of-the-art heating and cooling method, developed by Tiffin engineers for exclusive use in our luxury coaches. Modeled on residential-style systems, it uses adjustable registers and return vents placed the length of the ceiling to keep the airflow moving in a circular pattern to maintain your desired interior temperature. Whisper quiet and incredibly efficient, it easily lives up to its name — Extraordinaire.

28 BR



32 BR



TAKE A CLOSER LOOK AT OUR INNOVATIVE AC SYSTEM

All options may not be available in every model. Because of progressive improvements, specifications, standard & optional equipment are subject to change without notice or obligation. For a complete & up-to-date list of available options & specifications, as well as information on Tiffin's full line of motorhomes, visit tiffinmotorhomes.com.

INTERIOR DÉCOR

Pick a palette. It's time to customize your coach. Tiffin's commitment to quality and detail really shines when it comes to our finish options. Handcrafted solid wood cabinets, doors, drawers, and face framings gleam in your choice of three finishes, Medium Alderwood, English Chestnut and Cordovan. Add a splash of color with contemporary fabrics, countertops and tile. The Allegro Breeze offers three fabric suite options: River Rock, Sahara and introducing Zest, new for the 2015 model. View larger images of all interior décor options at tiffinmotorhomes.com.

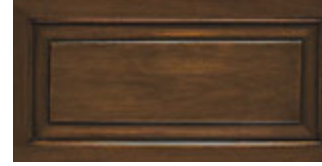
CABINETS



MEDIUM ALDERWOOD



ENGLISH CHESTNUT

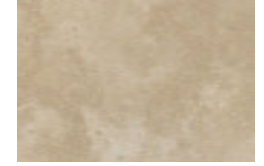


CORDOVAN

FLOORING



CARPET



TILE

RIVER ROCK FABRIC SUITE

LIVING AREA & KITCHEN



PILLOWS

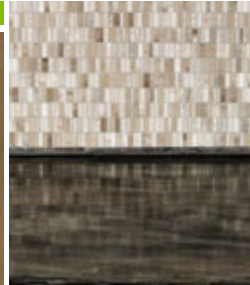


VALANCE

SOFA & COCKPIT SEATS



STANDARD LEATHER



BACKSPLASH & COUNTERTOP

SAHARA FABRIC SUITE

LIVING AREA & KITCHEN



PILLOWS



VALANCE

SOFA & COCKPIT SEATS



STANDARD LEATHER



BACKSPLASH & COUNTERTOP

ZEST FABRIC SUITE

LIVING AREA & KITCHEN

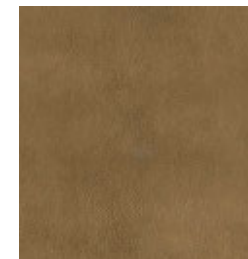


PILLOWS

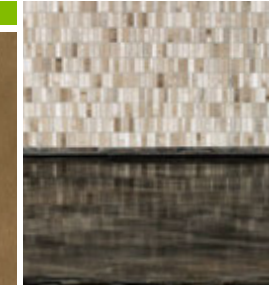


VALANCE

SOFA & COCKPIT SEATS



STANDARD LEATHER



BACKSPLASH & COUNTERTOP

BEDROOM



BEDROOM



BEDROOM



Allegro Breeze cabinet doors & fascias are made of solid wood, & all cabinet finishes are available in combination with any fabric suite. All options may not be available in every model. Because of progressive improvements, specifications, standard & optional equipment are subject to change without notice or obligation. For a complete & up-to-date list of available options & specifications, visit tiffinmotorhomes.com.



SURROUND SOUND SYSTEM



OPTIONAL EXTERIOR TV



TAKE A CLOSER LOOK AT OUR SMARTSLIDES

LIVE

Room to roam & room to live.

The Breeze welcomes you with all the comforts of home — and then some. You'll be impressed with the luxurious features available in a coach this size. Expert engineering allows for a surprisingly large living space for the footprint, whether you choose the 28' with one slide-out or the 32' with two. Of course, RV living is all about the great outdoors. So, unfurl the automatic awning for fresh air dining and entertaining, or enjoy family movie night with the optional exterior TV. Inside or out, it's all here in the Breeze.

DESIGN

When the coach docks for the day, swivel the captain's chair and transform from driver to resident. The main cabin is a cozy refuge, equipped with everything you need for relaxation, from comfortable seating and clutter-controlling storage to satellite TV and surround sound system. Energy-efficient LED lighting keeps the entire coach light and bright after the sun goes down.

DÉCOR

You might expect less style in a smaller-size coach. Not in the Breeze. Luxuries along for the ride include tile flooring, quality furnishings, and designer interior finishes. Tailor the interior décor to your personal taste, with a choice of contemporary fabric selections and classic wood finishes. As in every Tiffin model, cabinetry is 100% hardwood, custom-built by hand in our Red Bay mill shop.

SMARTSLIDES™ SEAMLESS SLIDE-OUT

There's more than meets the eye with our seamless slides. Manufactured exclusively by Tiffin for the Breeze, our slide-outs are built as one seamless unit of molded fiberglass. Virtually undetectable when closed, our Smartslides Seamless Slide-outs expand smoothly with a push of a button.

SHOWN 32 BR FLOOR PLAN WITH ENGLISH CHESTNUT CABINETS AND ZEST INTERIOR





TAKE A CLOSER LOOK AT THE BREEZE COMPLETE 360 INTERIORS





DINE

Cook up a good time in the tasteful kitchen galley.

You'll be a gracious host in the kitchen of the Breeze, with a host of helpful amenities, from the double-bowl stainless steel sink to the convection microwave oven. Ample storage ensures a place for everything. A handcrafted built-in pantry, ceiling mounted overhead cabinets, and up to 83 cubic feet of basement storage provide room for all the necessities — and more. Just fill this kitchen with all your favorite eats and you're ready to fuel up anytime, wherever you go.

KITCHEN HELPERS

Cooking on the road doesn't mean you have to sacrifice convenience. Clever space-saving tricks are on board to simplify meal prep. A gooseneck faucet provides adequate depth for filling large pots. The two-burner cooktop is inset with a hinged cover that converts to additional countertop space. And the dishwasher stays hotter longer, courtesy of insulation around the sink walls.

HOUSEHOLD MAINTENANCE

When it's time to tidy up, solid surface countertops and tile flooring clean up spotlessly with a quick wipe. A full tile backsplash, new this year, lends elegance, as well as low-maintenance ease. Fabrics are treated for stain resistance. Opt for the central vacuum system to simplify cleanup throughout the coach.



TIFFIN STORE-IT-ALL™ ASSURANCE

The 2015 Breeze offers Store-It-All Assurance, Tiffin's desire to exceed competitors in storage capacity, a needed commodity in any kitchen. Deeper than industry standards, our cabinets feature adjustable shelving and sliding compartments for better organization. Drawers are outfitted with full extension metal slides to pull completely open. All kitchen cabinetry is handcrafted from solid unblemished hardwood and features Tiffin's trademark fit-and-finish detailing.

SHOWN 32 BR FLOOR PLAN WITH ENGLISH CHESTNUT CABINETS AND ZEST INTERIOR



DOUBLE BOWL STAINLESS STEEL SINK



TWO-BURNER COOKTOP WITH HINGED COVER



U-SHAPED BOOTH DINETTE WITH HIDDEN STORAGE



OVERHEAD TV IN BEDROOM



SOFA CONVERTS TO BED



GLASS SURROUND SHOWER



PRIVATE WATER CLOSET

REST

Cozy up at night in four-star comfort.

When it's time to turn in, you won't find a more welcoming harbor than the bedroom of the Allegro Breeze. The queen-size memory foam mattress — the same quality found in luxury hotels — comes standard. A sound-rejecting insulated door and light-blocking black nightshades, new in 2015 models, allow for catnaps anytime. Catch up on your favorite shows with a ceiling-mounted HDTV, which tucks away when not in use. As for storage, his-and-her wardrobes keep clothes neatly organized, while a compartment under the bed houses larger items.

SLEEPING

Rest assured, a party of six can sleep comfortably in this smartly engineered motor coach. In addition to space for two in the bedroom, the living room sofa folds out into a double bed, and the built-in dinette booth can be transformed into a cozy sleeping bay. When it's time to hit the road again, pillows and bedding can be tucked into hidden storage space underneath the dinette.

BATHING

For convenience and privacy, the Breeze provides separate compartments for lavatory and shower. Sliding pocket doors allow you to close off the bathroom area entirely, or create a bedroom suite. Finishes throughout are top notch, from the satin nickel vanity faucet and solid surface vanity top to the handcrafted hardwood cabinetry. The glass surround and a skylight lend an air of spaciousness to the shower area.

SHOWN 32 BR FLOOR PLAN WITH ENGLISH CHESTNUT CABINETS AND ZEST INTERIOR





WARRANTY

You won't find a better warranty because you won't find a better-built coach.

The Tiffin Five-Star Warranty.
The best in the business, bar none.



At Tiffin Motorhomes, we build for quality first and foremost, limiting our production to just 12 coaches a day to ensure meticulous craftsmanship. It may not be the most business-savvy way to run a company but it is the best way. By investing the time and effort to do things right, we want you, as a Tiffin owner, to have the utmost confidence in your coach, as well as a peace of mind you won't find with other manufacturers. You see, not only do we stand proudly behind our product, we stand behind you as well.

★ 10

YEAR
CONSTRUCTION
WARRANTY

The structural integrity of the welded frame of entire coach is warranted for 10 years.

★ 5

YEAR
DELAMINATION
WARRANTY

We guarantee against all exterior fiberglass delamination or wall separation for 5 years.

★ 1

YEAR
COMPREHENSIVE
WARRANTY

Your coach is warranted against defects in materials and workmanship for 12 months, or 12,000 miles of use.

★ 1

YEAR
COACH ROADSIDE
SERVICES

Available through Coach-Net, the country's largest RV emergency road service, this program provides 24/7 access to responsive roadside and technical assistance.

★ Ongoing
Owner
Support

No other motorhome company can compare with Tiffin's exceptional customer service. Email us at service@tiffinmotorhomes.com or call us at 256/356.0261.

EXTERIOR DÉCOR

FULL-BODY PAINT SCHEMES



GOLD CORAL



SILVER SAND



MAROON CORAL



SUNLIT SAND



ROCKY MOUNTAIN BROWN

PREMIUM PAINT SYSTEM

Our eight-step full-body paint system features premium grade BASF paints sealed with four layers of superclear coat with ultraviolet protection. An additional layer of scratch-resistant plastic coating protects the front of the coach, stairwell, and entry door lock.

TAKE A CLOSER LOOK AT OUR PAINT SYSTEM IN ACTION



SPECIFICATIONS

GENERAL EXTERIOR

STANDARD ON ALL MODELS:

- Fiberglass Front & Rear Caps
- Tinted One-piece Windshield
- 6.0 kw Onan® Generator
- Horizontal Mounted Wipers
- Heated Power Mirrors
- Gel-coat Fiberglass Walls
- LED Patio & Door Light
- Patio Awning
- Slide-out Awning(s)
- Power Entry Door Awning
- Aluminum Wheels
- Foil Wrap Insulation Barrier
- Electric Step
- Convenient Storage Doors with Gas Shocks
- Ridged Long-life Storage Boxes
- Single Handle Lockable Storage Door Latches
- Heated Holding Tank Compartments
- Two 6 V Auxiliary Batteries
- Digital/Analog TV Antenna
- 50 Amp Service
- Black Holding Tank Flush System
- Exterior Rinse Hose/Shower
- Back-up Camera
- 110 V Exterior Receptacle
- Inverter for TV & Entertainment Center Only
- Undercoating
- Roof Ladder
- External Tripod Satellite Hook-up
- Exterior Storage Compartment Lights
- Paint Protective Film on Front Cap
- Seamless, One-piece Fiberglass Composite Slide-out Box Construction
- Side-view Cameras Activated by Turn Signals
- Full-body Paint
- Level Air System
- Low Profile Roof AC – Front
- Low Profile Roof AC – Rear

AVAILABLE OPTIONS:

| AVAILABLE OPTIONS: | 28 BR | 32 BR |
|---|--------------------------|--------------------------|
| In-motion Satellite Dish* | <input type="checkbox"/> | <input type="checkbox"/> |
| Low Profile Roof AC with Heat Pump (in Place of Front AC) | <input type="checkbox"/> | <input type="checkbox"/> |
| Exterior TV | <input type="checkbox"/> | <input type="checkbox"/> |

*High-definition programming is not available on a domed satellite antenna unless you subscribe to DISH Network®.

AUTOMOTIVE

STANDARD ON ALL MODELS:

- Allison 6-speed Automatic Transmission with Lock-up
- Independent Front Suspension
- Air Ride System
- Full Air Brakes
- Exhaust Brake

CHASSIS

| POWERGLIDE® REAR ENGINE DIESEL CHASSIS: | 28 BR | 32 BR |
|---|-----------------------|-----------------------|
| Engine | Navistar MaxxForce® 7 | Navistar MaxxForce® 7 |
| Peak HP | 240 HP @ 2,600 RPM | 240 HP @ 2,600 RPM |
| Peak Torque (lb – Ft. Max Net) | 620 @ 1,400 | 620 @ 1,400 |
| GAWR – Front | 8,500 lb | 8,500 lb |
| GAWR – Rear | 13,500 lb | 15,000 lb |
| GVWR | 22,000 lb | 23,500 lb |
| GCWR | 26,000 lb | 28,000 lb |
| Wheel Base | 152" | 202" |
| Tire Size | 265/70R19.5 | 265/70R19.5 |
| Fuel Tank (Gallons) | 70 | 70 |
| Alternator Amps | 170 | 170 |
| Trailer Hitch Capacity | 4,000 lb | 4,500 lb |

WEIGHTS & MEASURES

| OVERALL: | 28 BR | 32 BR |
|--|--------|--------|
| Overall Length (Approximate) | 29' 7" | 33' 2" |
| Overall Height with Roof Air (Maximum) | 11' 2" | 11' 2" |
| Interior Height | 78" | 78" |
| Overall Width | 95" | 95" |
| Interior Width | 91" | 91" |
| Fresh Water (Gallons) | 70 | 70 |
| Black Water (Gallons) | 30 | 30 |
| Grey Water (Gallons) | 50 | 50 |
| LPG Tank (Gallons; can only be filled to 80% capacity) | 20 | 20 |
| Basement Storage (Cubic Feet – Approximate) | 45 | 83 |
| Minimum Garage Height | 12' | 12' |



GENERAL INTERIOR

STANDARD ON ALL MODELS:

- High Gloss Raised Panel Hardwood Cabinet Doors
- Vinyl Headliner
- Treated Carpet & Fabrics
- Vinyl Tile Flooring
- Ball Bearing Drawer Slides
- Solar & Privacy Shades in Living Room
- LED Lighting
- Tank Level Monitor System
- Extraordinaire™ AC System
- USB Ports
- 6-gallon DSI Gas/Electric Water Heater
- Step Well Cover

| AVAILABLE OPTIONS: | 28 BR | 32 BR |
|--|--------------------------|--------------------------|
| Vacuum Cleaner System | <input type="checkbox"/> | <input type="checkbox"/> |
| Cordovan Solid Cabinet Doors & Drawer Fronts | <input type="checkbox"/> | <input type="checkbox"/> |
| English Chestnut Solid Cabinet Doors & Drawer Fronts | <input type="checkbox"/> | <input type="checkbox"/> |
| Medium Alderwood Solid Cabinet Doors & Drawer Fronts | <input type="checkbox"/> | <input type="checkbox"/> |
| Ducted Furnace | One | Two |

COCKPIT

STANDARD ON ALL MODELS:

- Power Halo Leatherette Driver & Passenger Seats
- Lighted Instrument Panel
- Contemporary-styled Dash
- Single CD Player & AM/FM Stereo
- Satellite-ready Radio (Subscription Required)
- 12 V Dash Receptacles
- USB Dash Receptacle
- Back-up Monitor
- Dash Gauges with Diagnostic System
- Dual Dash Fans
- Auxiliary Start
- Adjustable Gas & Brake Pedals
- Snack Tray with Two Cupholders
- Power Solar & Privacy Windshield Shades
- Manual Solar & Privacy Shades on Side Windows
- Fire Extinguisher
- Drawer in Dash

| AVAILABLE OPTIONS: | 28 BR | 32 BR |
|--------------------|--------------------------|--------------------------|
| Front Overhead TV | <input type="checkbox"/> | <input type="checkbox"/> |

KITCHEN

STANDARD ON ALL MODELS:

- Solid Surface Countertops
- Full Tile Backsplash
- Double Bowl Stainless Steel Sink
- 2-burner Cooktop with Hinged Cover
- Convection Microwave with Exterior Venting
- 2-door Refrigerator with Pantry

| AVAILABLE OPTIONS: | 28 BR | 32 BR |
|--------------------------|--------------------------|--------------------------|
| Icemaker in Freezer | <input type="checkbox"/> | <input type="checkbox"/> |
| Residential Refrigerator | NA | <input type="checkbox"/> |

BATH

STANDARD ON ALL MODELS:

- Medicine Cabinet
- Skylight in Shower & LED Light
- Satin Nickel Vanity Faucet
- Molded Fiberglass One-piece Shower
- Solid Surface Vanity Top
- Roof Vent Fan

BEDROOM

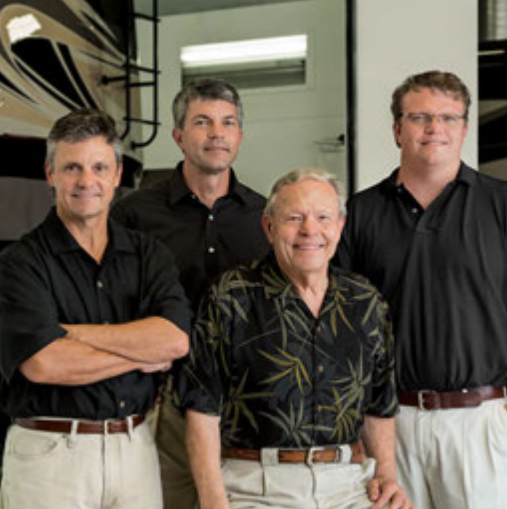
STANDARD ON ALL MODELS:

- Dual Wardrobes with Banks of Drawers
- Bed Comforter with Throw Pillows
- Memory Foam Queen Mattress
- Four Large Drawers in Bed Pedestal
- Solar & Privacy Shades
- Carbon Monoxide & Propane Gas Detectors
- Privacy Door in Hallway
- Overhead TV
- Tile Flooring

LIVING AREA/DINETTE

STANDARD ON ALL MODELS:

- U-shaped Dinette Converts to Bed
- Midsection TV
- Inverter for Televisions & Surround Sound
- Halo Leatherette DE Sofa/Sleeper on Driver Side
- Home Theater Surround Sound System



A family business built around yours.

Tiffin Motorhomes is proud to be one of the few family-owned manufacturers in the industry, and it makes a significant difference in how our company operates versus our competitors. For starters, with the Tiffin name on every coach, building a superior motorhome isn't just our occupation. It's a matter of personal pride, a pursuit we have committed our lives to perfecting.

Since we don't have shareholders looking over our shoulder, the only people we focus on making happy are folks like you. All the decisions we make, from using better parts to offering more thoughtful floor plans than anyone else, are based on what will result in a better motorhome, not a better dividend check. In fact, some decisions, like limiting production to 12 coaches a day to ensure quality craftsmanship, probably wouldn't sit too well with a corporate board of directors.

Also, when we say family-owned, that means family-operated, too. Tim Tiffin has been our General Manager for more than a decade, guiding the overall direction of our company. Van Tiffin oversees innovations as head of Research & Development, and Lex Tiffin's work with Supplier Relations helps us maintain our high standards. Of course, everyone knows our founder Bob, who is in the RV Industry Association's Hall of Fame and is still the first one at the plant every morning at 5:00 a.m.

As a family running a motorhome company, we understand families who own motorhomes. We know it's not just about where a coach will take you, but the experience you take from the journey. That's why every Tiffin motorhome is made to move you.

**LEFT TO RIGHT: TIM TIFFIN, VAN TIFFIN,
BOB TIFFIN, AND LEX TIFFIN**

GO TO TIFFINMOTORHOMES.COM

Visit us on the web for more information on the 2015 Allegro Breeze and all 2015 Tiffin Motorhomes, along with the latest product and specification updates. Plus, watch videos and see other exclusive web content. You can also follow us on Facebook and Twitter.

FOR PARTS & SERVICE CALL [256/356.0261](tel:2563560261)

 [FACEBOOK.COM/TIFFINMOTORHOMES](https://www.facebook.com/tiffinmotorhomes)

 [TWITTER.COM/TIFFINMOTORHOME](https://twitter.com/tiffinmotorhome)

YOUR LOCAL TIFFIN DEALER: