

Standards & Options

STANDARDS

PINNACLE PACKAGE

MANDATORY

- Solid surface tops in kitchen and main bath
- Frameless tinted safety glass windows
- Bluetooth surround sound bar
- Blu-Ray player
- Blackout roller night shades
- 15K ducted AC
- 40K BTU furnace
- Polartec foil insulation package
- LED interior lights
- 30" Residential microwave
- 19.7 gal/hr quick recovery G/E DSI water heater (10 gal)
- Trail Aire Rota-Flex pin box
- Dual 40# LP bottles
- Secure Seal heated and enclosed underbelly
- 16" custom aluminum wheels

PEAK PERFORMANCE PACKAGE

MANDATORY

- 5.5 Onan generator w/30 gal fuel tank
- Fueling station with exterior tank gage and power
- Rear electric queen Happijac bed with rollover sofas
- 2nd power awning w/LED strip
- 32" LED TV in bedroom
- Garage pull down screen
- Dyson cordless vac
- Level-Up 6-point hydraulic leveling
- 12 cu. ft. G/E refrigerator
- I-Cool memory foam mattress
- LED TV in main living area

INTERIOR

- Garage AM/FM/MP3 stereo w/Bluetooth
- (2) garage speakers
- Garage TV bracket w/cable & sat prep
- W/D prep
- 22" Diamond tread plate protection
- Aluminum RAM air vents in garage
- Black snap window covers w/storage in garage
- Tuff ply garage flooring
- 8' Ceiling in main living area
- Max fan w/ rain sensor in main living room
- Foldable in/out dinette table
- Luxurious styled reclining sofas with drink holders
- Stainless steel ball bearing drawer guides
- Porcelain foot flush toilet

- Fireplace with remote
- Large stainless steel residential kitchen sink
- High rise commercial grade kitchen faucet w/pull-down sprayer
- Raised panel cabinet doors throughout
- LP & carbon monoxide detectors, and smoke alarms
- Crown molding throughout
- USB charging station
- Power exhaust fans in bedroom, bathroom and garage

EXTERIOR

- Rear flood / loading lights
- 8' rear ramp door
- Quad-Step entry steps at both doors
- 30" entry door(s)
- Convenience docking station
- Roof mounted satellite prep
- LED docking hitch light
- Fold away grab handles at both entry doors
- Auxiliary 30 gal fuel tank
- Spare tire with carrier
- 50 amp detachable power cord
- Fold flat roof access ladder
- Slam latch-baggage doors
- (2) LED exterior scare lights
- Exterior TV & satellite hook-ups
- Water heater by-pass valve
- Black tank flush
- (2) marine grade exterior speakers

CONSTRUCTION

- 3/8" roof decking
- 5/8" floor decking
- High pressure hot melt laminated sidewalls
- Total Truss roof system
- Spring assist rear ramp
- 5-sided Alumina frame construction
- Radius roof line
- Wired and prepped for 2nd and 3rd AC
- 7000# rated Superlube axles
- Trail Aire Equa Flex suspension
- Galvanized wheel wells
- E rated radial tires
- Super-Stor basement storage
- Dura-Cam I beam frame
- Front hydraulic landing gear
- Rear electric stabilizer jacks
- 1200# rated frame mounted D-rings in garage

POLARTECH INSULATION PACKAGE COMPONENTS

- Sidewall - Block foam insulation + double layer lauan
- Roof - Wood rafters + R-14 spun insulation + R-15 radiant foil
- Floor system - R-14 spun insulation + R-15 radiant foil + ABS enclosure
- Front wall - R-7 spun insulation + R-15 radiant foil
- Slide floor - R-15 radiant foil insulation
- Slide end walls - R-7 spun insulation + R-15 radiant foil
- Bedroom deck - R-7 spun insulation + R-15 radiant foil
- Above open pin box - R-15 radiant foil
- Gate valves - Enclosed and heated
- Underbelly - Forced heat to tanks
- 40,000 BTU Furnace - Largest in its class
- Dual 40# LP bottles

TOTAL TRUSS ROOF SYSTEM COMPONENTS

- 50% stronger than competitive roof designs
- 4 1/2" crowned wood truss 16" on-center
- 2"x2" vertical wood stud supports to maximize load capacity
- Oversized nail plates for greater stability
- 3/8" roof decking (secured in place with screws)
- Radius roof edge
- Fully walk able

OPTIONS

- Full paint (select color)
- Gen 2.0 patio deck w/power awning
- 3 season door in garage I/O pull down screen
- DS sofa slide power awning (NA Richmond, Speedway, Grand Prix, Talladega)
- 2nd A/C in bedroom (15K)
- 3rd A/C in garage (15K)
- 32" LED TV in garage
- 18 cu. ft. refrigerator w/ 1000W inverter
- Polar Package (dual pane windows, 12V heat pads, heat pump on main AC)
- Trail Air Tri-Glide pin box
- Décor (Dusk, Twilight, Lunar)

CROSSROADS®

RECREATIONAL VEHICLES

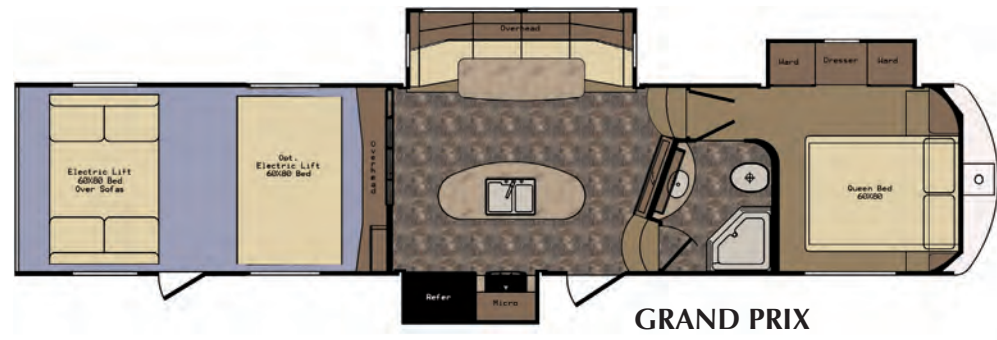
1140 W Lake Street • Topeka, IN 46571 • www.crossroadsrv.com

ELEVATION

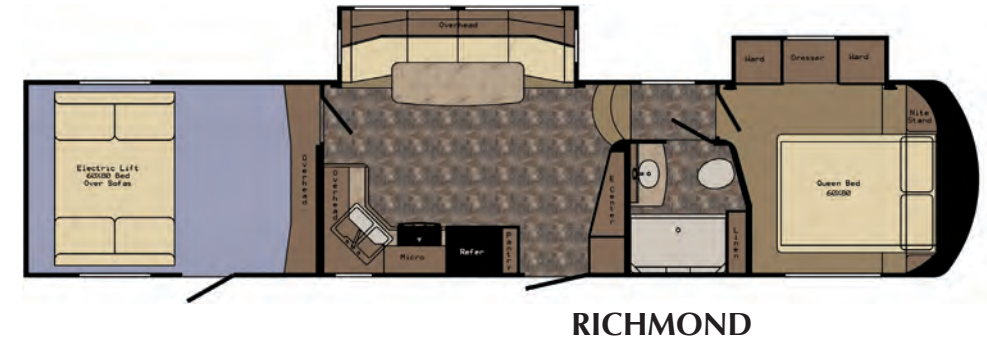


Floorplans & Specifications

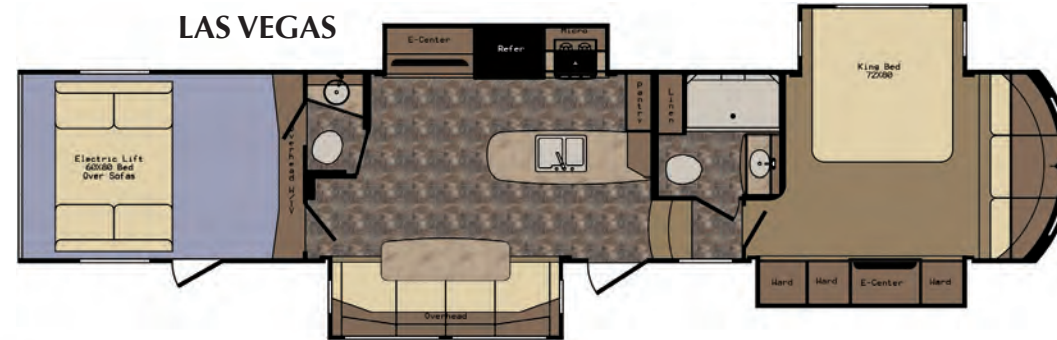




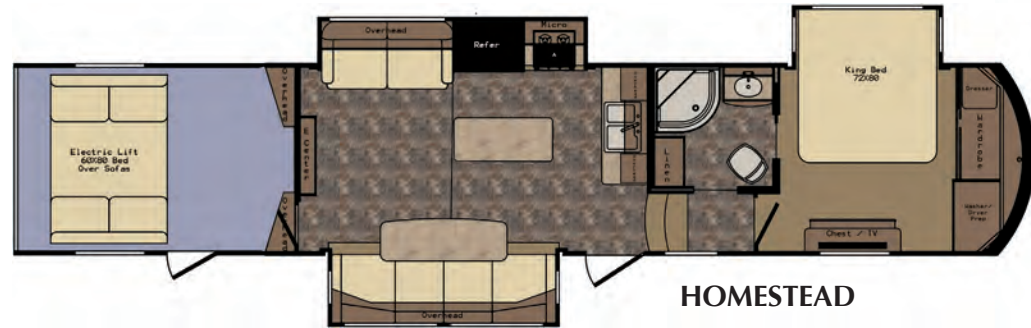
GRAND PRIX



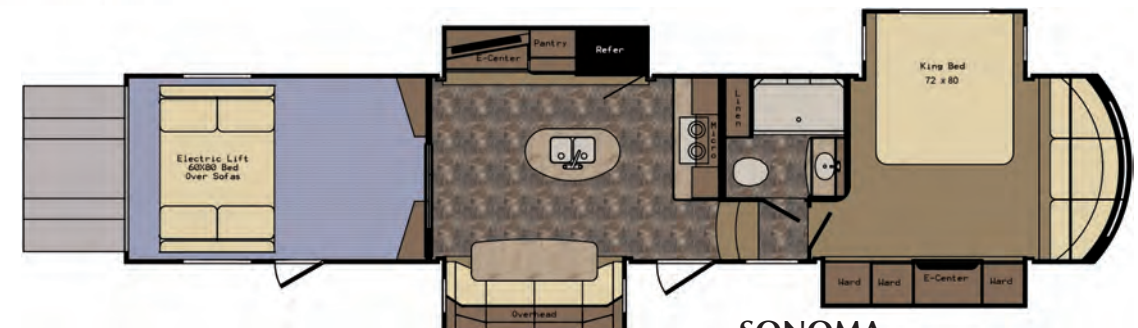
RICHMOND



LAS VEGAS

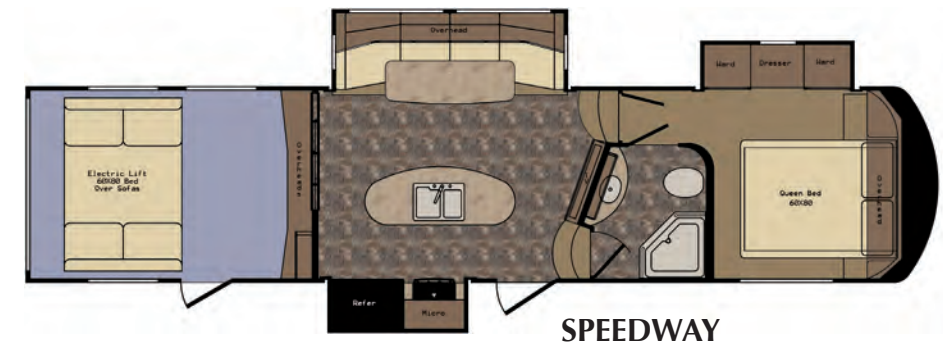


HOMESTEAD



SONOMA

| ELEVATION | GRAND PRIX | HOMESTEAD | LAS VEGAS | RICHMOND | SONOMA | SPEEDWAY |
|--------------------|--------------------------|--------------------------|--------------------------|--------------------------|--------------------------|--------------------------|
| GVWR | 18000 | 18000 | 18000 | 15500 | 18000 | 15500 |
| DRY WEIGHT | 13810 | 14726 | 14848 | 12668 | 14720 | 12578 |
| CARRYING CAP. | 4190 | 3274 | 3152 | 2832 | 3280 | 2922 |
| HITCH WEIGHT | 3366 | 3410 | 3770 | 2790 | 3488 | 2310 |
| AXLE WEIGHT | 10444 | 11316 | 11078 | 9878 | 11232 | 10268 |
| EXTERIOR WIDTH | 102" | 102" | 102" | 102" | 102" | 102" |
| BUMPER TO PIN | 43' 5" | 44' 7" | 44' 6" | 38' 11" | 43' 5" | 39' 5" |
| EXT BOX LENGTH | 44' 5" | 45' 7" | 45' 6" | 39' 11" | 44' 5" | 40' 5" |
| EXT. HEIGHT W/AC | 13' 2" | 13' 2" | 13' 2" | 13' 2" | 13' 2" | 13' 2" |
| FRAME SIZE | 12" | 12" | 12" | 12" | 12" | 12" |
| FRESH WATER CAP. | 104 | 104 | 92 | 104 | 92 | 104 |
| BLACK WATER CAP. | 42 | 42 | 68 | 42 | 42 | 42 |
| GRAY / GALLEY CAP. | 84 | 84 | 68 | 84 | 84 | 84 |
| L.P. GAS | 2 - 40# BOTTLES 18.9LBS. | 2 - 40# BOTTLES 18.9LBS. | 2 - 40# BOTTLES 18.9LBS. | 2 - 40# BOTTLES 18.9LBS. | 2 - 40# BOTTLES 18.9LBS. | 2 - 40# BOTTLES 18.9LBS. |
| TIRE SIZE | ST235/80R16E | ST235/80R16E | ST235/80R16E | ST235/80R16E | ST235/80R16E | ST235/80R16E |
| TIRE RATED LOAD | 3520# @ 80 PSI | 3520# @ 80 PSI | 3520# @ 80 PSI | 3520# @ 80 PSI | 3520# @ 80 PSI | 3520# @ 80 PSI |
| RIM SIZE | 16 X 6J | 16 X 6J | 16 X 6J | 16 X 6J | 16 X 6J | 16 X 6J |
| RIM RATED LOAD | 3960 | 3960 | 3960 | 3960 | 3960 | 3960 |
| GAWR | 7000 | 7000 | 7000 | 7000 | 7000 | 7000 |
| GROSS AXLE CAP. | 7000 | 7000 | 7000 | 7000 | 7000 | 7000 |
| SLIDEOUTS PER UNIT | 3 | 3 | 4 | 2 | 4 | 3 |
| AXLES PER UNIT | 3 | 3 | 3 | 2 | 3 | 2 |
| HITCH WEIGHT RATIO | 24% | 23% | 25% | 22% | 24% | 18% |
| AWNING SIZE | 18' | 17' | 7' | 18' | 7' | 18' |



SPEEDWAY