

Standards & Options

STANDARDS EXTERIOR

- High gloss laminated sidewalls
- 5-Sided Alumina frame construction
- Aerodynamic painted front cap with LED accent lights
- One-piece seamless rubber roof covering
- Radius rolled roof edge
- Total Truss Roof System
- 30"x72" main entry door
- Lighted triple entry step
- Extendable grab handle at main entry
- EZ lube axles
- Trail air equa-flex suspension
- Trail air roto flex pin box
- 16" "E" rated nitrogen filled radial tires
- Galvanized wheel well
- Outside kitchen (VBM)
- Super-Stor pass through basement storage
- Metal slam-latch pass through baggage doors
- Cable prep and electric outlet in basement
- Manual slide override extends through frame for easy access
- Dura-Cam I beam frame
- Scare light
- Exterior marine grade speakers (2)
- Dual battery capacity
- Battery disconnect
- Heated and enclosed gate valves
- ABS Enclosed underbelly
- Secure seal underbelly
- Forced heat to underbelly
- Black tank flush
- Quick recovery 10gal G/E DSI water heater (19.7 gal/hr)
- Outside shower
- Exterior utility center
- 50amp detachable power service
- 2nd AC prep
- Cable/SAT prep
- Digital TV antenna
- Electric rear jacks
- Outside grill prep
- Roof ladder

STANDARD INTERIOR

- Lumber core screwed stile cabinetry construction
- Raised panel cabinetry throughout
- 70-lb steel ball bearing guides, full extension
- Solid wood drawer construction
- Hardwood mullion style fridge front
- Extendable free standing table and chairs
- Self igniting 22" oven with 3-burner cook top
- Range cover
- Knife rack

- Adjustable pantry shelving (VBM)
- High rise pull out kitchen faucet
- Under mount stainless steel kitchen sink w/sink cover
- Maximum lino (Beauflor wood grain)
- Tri-Fold hide a bed sofa
- Swivel rocker recliner chairs (VBM)
- Deluxe theater seating (VBM)
- Ceiling fan
- Fireplace w/remote
- Slide out sidewall light (VBM)
- OHC above sofa/chairs in slide out
- Decorative slide fascias
- Water heater by-pass kit
- EZ winterization kit
- Charging station
- Backlit command center for switches
- 65amp converter with distribution center
- Bath skylight
- Built medicine cabinet
- Glass tub/shower enclosure
- Deluxe bedding package
- Full trunk under bed storage
- Plywood bed base with strut assist
- Spacious bedroom closets
- Washer/dryer prep (VBM)
- Fire extinguisher
- LP/CO2 detector
- Smoke detector

SELECT PACKAGE MANDATORY

- 8cu ft refer
- 12v Multi-media sound system w/Bluetooth
- Toy Lok
- Black Label furniture
- Deluxe soft pull roller night shades
- Dark tinted safety glass windows
- Glazed maple cabinetry
- Interior safety step light
- Interior grab handle
- Dual 30# lp tanks w/auto changeover
- Porcelain toilet with foot flush
- 32" - 48" LED TV in living area (VBM)
- Microwave
- 35,000 btu furnace
- 10 gal quick recovery water heater
- 15,000 BTU ducted air system with quick cool
- Spare tire
- Solid surface kitchen countertops
- Polartec insulation package
- Aluminum rims
- Vetro High gloss sidewalls
- Electric awning with LED light
- Trail Air Roto-flex pin box

- Equa flex suspension
- Rear hitch receiver
- 2nd power awning with LED lights (VBM)
- Maxx Air fan w/rain sensor in kitchen
- Correct track alignment system
- I-Cool mattress (60"x80")
- LED lights throughout interior
- LED strip light behind main TV and in outside kitchens
- 8 Function remote control
- 7" Deep sink w/ high rise pull out faucet
- Luxury backsplash

OPTIONS

- Bumper mount grill
- Insulated windows
- Painted rear fiberglass cap
- Painted exterior (requires painted rear cap)
- 2nd AC (lo-profile 13.5)
- Maxx Air Fan w/ rain sensor in bathroom
- Maxx Air Fan w/ rain sensor in living area (362FL only)
- King bed IPO Queen (322RL & 303SE)
- Free standing table and chairs with recliner (345BH)
- Theater seats ipo Recliners (VBM)
- Carpet in living area
- 32" TV with bracket in bedroom
- Ground control 3.0 electric auto leveling system
- 18 cubic ft French door Residential refer (VBM)
- 12 cubic ft side by side refer (362FL only)

POLARTEC COMPONENTS

- Sidewall - Block foam insulation + double layer lauan
- Roof - Wood rafters + R-14 spun insulation + R-15 radiant foil
- Floor system - R-14 spun insulation + R-15 radiant foil + ABS enclosure
- Front wall - R-7 spun insulation + R-15 radiant foil
- Rear wall - R-7 spun insulation + R-15 radiant foil
- Slide floor - R-15 radiant foil insulation
- Slide end walls - R-7 spun insulation + R-15 radiant foil
- Bedroom deck - R-7 spun insulation + R-15 radiant foil
- Above open pin box - R-15 radiant foil
- Gate valves - Enclosed and heated
- Underbelly - Forced heat to tanks
- 35,000 BTU Furnace - Largest in its class

TOTAL TRUSS ROOF SYSTEM

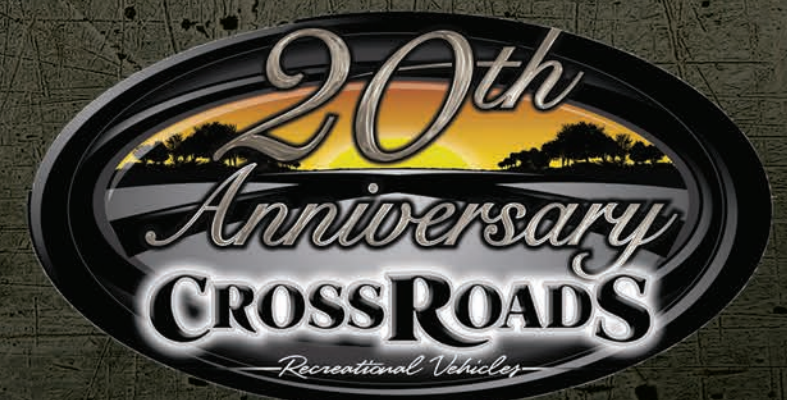
- 50% stronger than competitive roof designs
- 4 1/2" crowned wood truss 16" On Center
- 2"x2" vertical wood stud supports to maximize load capacity
- Oversized nail plates for greater stability
- 3/8" roof decking (secured in place with screws)
- Radius roof edge
- Fully walkable

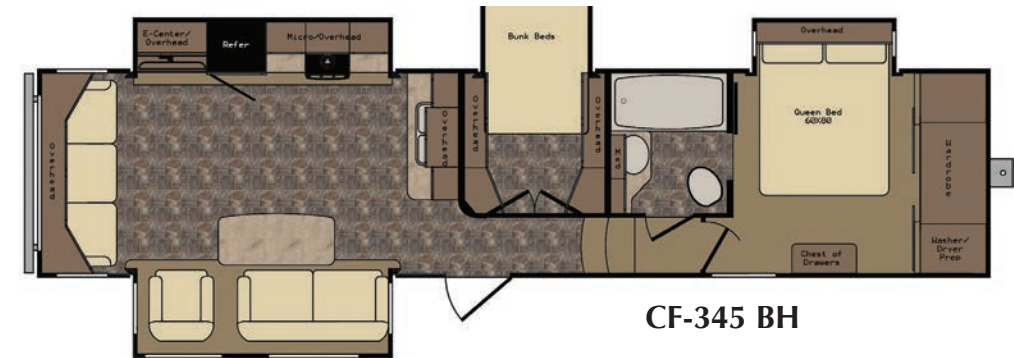
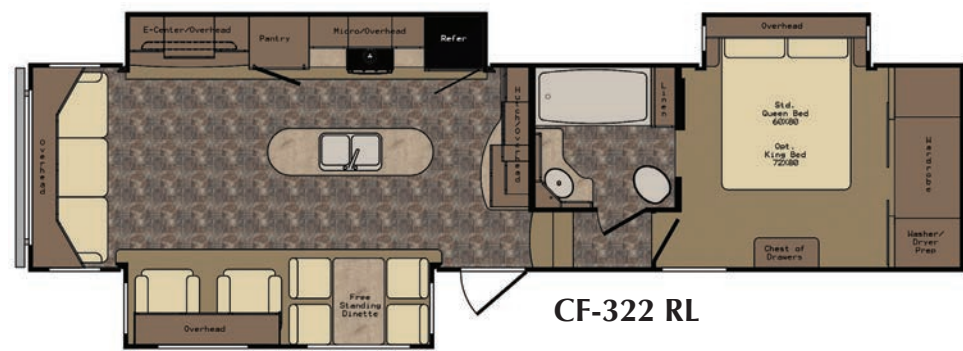
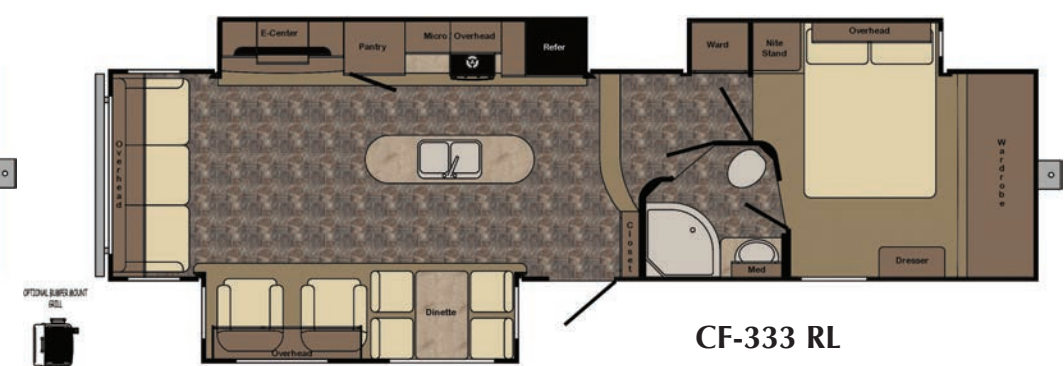
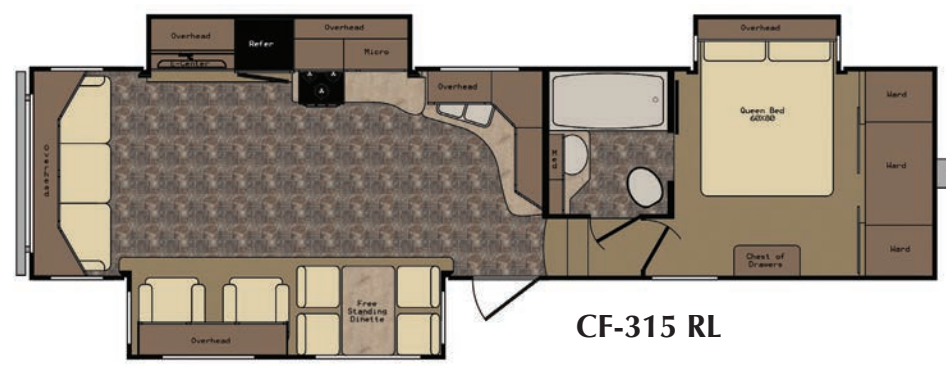
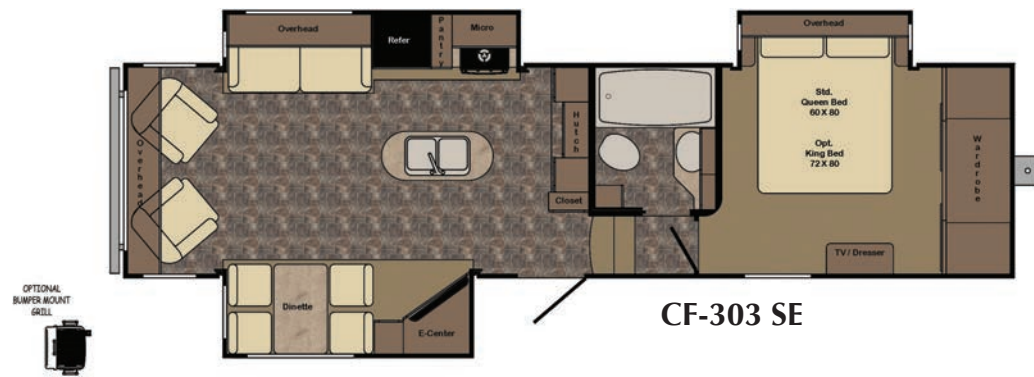
CRUISER

Floorplans & Specifications

CROSSROADS[®]
RECREATIONAL VEHICLES

1140 W Lake Street • Topeka, IN 46571 • www.crossroadsrv.com





FIFTH WHEELS	CF-303 SE	CF-305 RS	CF-315 RL	CF-322 RL	CF-333 RL	CF-345 BH	CF-362 FL	CF-365 BL
GVWR	12,304	12192	12478	12286	12132	14188	14318	14368
DRY WEIGHT	10,172	9624	10084	10544	10538	10897	10907	11658
CARRYING CAP.	2,132	2568	2394	1742	1594	3291	3411	2710
HITCH WEIGHT	1,904	1792	2078	1886	1732	2188	2318	2368
AXLE WEIGHT	8,268	7832	8006	8658	8806	8709	8589	9290
EXTERIOR WIDTH	96"	96"	96"	96"	96"	96"	96"	96"
BUMPER TO PIN	34'3"	33' 3"	35' 3"	37' 3"	36' 3"	37' 10"	39' 3"	39' 10"
EXT. BOX LENGTH	34'11"	33' 11"	35' 11"	37' 11"	36' 11"	38' 6"	39' 11"	40' 6"
EXT. HEIGHT W/AC	12'5"	12' 8"	12' 8"	12' 8"	12' 8"	12' 8"	12' 8"	12' 8"
FRAME SIZE	10"	10"	10"	10"	10"	10"	10"	12"
FRESH WATER CAP.	56	56	56	56	56	56	56	56
BLACK WATER CAP.	40	40	40	40	40	40	40	40
GRAY / GALLEY CAP.	80	40	80	80	80	80	80	80
L.P. GAS								
TIRE SIZE	235/80R16 E	235/80R16 E	235/80R16 E	235/80R16 E	235/80R16 E	235/80R16 E	235/80R16 E	235/80R16 E
TIRE RATED LOAD	3520# @ 80 PSI	3520# @ 80 PSI	3520# @ 80 PSI	3520# @ 80 PSI	3520# @ 80 PSI	3520# @ 80 PSI	3520# @ 80 PSI	3520# @ 80 PSI
RIM SIZE	16 X 6j	16 X 6j	16 X 6j	16 X 6j	16 X 6j	16 X 6K	16 X 6K	16 X 6K
RIM RATED LOAD	3200	3200	3200	3200	3200	3200	3200	3200
GAWR	5200	5200	5200	5200	5200	6000	6000	6000
GROSS AXLE CAP.	5200	5200	5200	5200	5200	6000	6000	6000
SLIDEOUTS PER UNIT	3	3	3	3	3	4	4	4
AXLES PER UNIT	2	2	2	2	2	2	2	2
HITCH WEIGHT RATIO	19%	19%	21%	18%	16%	20%	21%	20%
AWNING SIZE	15'	14'	14'	15'	15'	17'	18'	15'

