

## Standards & Options

### STANDARDS

#### LIVING ROOM

- Premium residential furniture
- Decorative glass in sofa slide-out cabinet doors
- Designer valances with hard lambrequin legs
- Chair rail in slide-out
- 7' Interior ceiling height (TT's)
- 6' 1" Ceiling in slide-out
- Decorative lights (VBM)
- Wood slide-out fascia
- Tri-fold H.A.B.
- AM/FM/CD/DVD Bluetooth stereo system
- Flush floor slide-out with large dinette windows
- Generous storage
- Storage drawers below booth dinette
- Living Room / Kitchen skylight

#### KITCHEN

- Super booth dinette (VBM)
- Range hood with light and exhaust fan
- High rise faucet
- Wall mounted systems monitor panel
- Ball bearings and drawer guides in drawers (rated for 70#s)
- Maple hardwood cabinet doors
- Maple cabinet drawers
- Microwave oven
- Range with oven
- 6 cu. Ft. Double door refrigerator

#### BATHROOM

- Large parchment color lavatory bowl
- Spacious shower/tub & one-piece surround
- Foot flush porcelain toilet
- Linen storage (varies by floor plan)
- Mirrored medicine cabinet
- Glass shower door & neo angle shower (VBM)
- Shower curtain with curved shower track (VBM)
- Skylight over tub (VBM)

### BEDROOM

- 60" X 74" Mattress
- TV hook-up
- Coordinated window treatments
- Night stands with outlets on each

### EXTERIOR

- 54 gallon fresh water tank
- Tinted safety glass windows
- Radial tires - nitro filled
- Easy open entry step
- Bumper with drain hose storage and end caps
- (2) Marine grade exterior speakers
- Molded rain gutters with 3" drip spouts
- Totally enclosed underbelly
- Outside shower
- Power landing gear (FW)
- Spare tire
- Electric awning w/LED lights
- Fiberglass front cap w/LED lights

### CONSTRUCTION

- One-piece rubber roof with 3" rolled roof wrap and 12 year manufacturer warranty
- 3/8" walkable roof decking
- 16" OC truss rafters with 4 1/2" crown
- R-7 Rated fiberglass roof insulation
- Rain gutters along entire roof line
- 13,500 Ducted A/C
- 16" OC stud placement in sidewalls, endwalls and slide rooms
- 5/8" floor decking
- R-7 Rated fiberglass sidewall insulation
- Steel I-beam frame
- R-7 Rated fiberglass floor insulation
- Maximum amount of linoleum throughout
- Moisture barrier wrapped floor
- 30" Radius entry door with screen
- Secure Stance axles (VBM)

### CONVENIENCE PACKAGE

#### (STANDARD)

- 3-Burner range with oven
- TV antenna
- Tub surround
- Water Heater Bypass
- Smoke detector
- LP detector
- 13,500 BTU A/C
- Fully enclosed and heated underbelly
- Electric Awning with LED lights
- Microwave
- Drawers under booth dinette
- Power vent in bath
- Large swing out entry assist handle
- 6 gallon gas/electric DSI water heater
- Night shades
- Outside shower
- Stabilizer jacks
- Skylight in Shower/Tub
- Laminated aluminum framed fiberglass sidewalls
- Sink covers
- Tri-fold Hide-A-Bed Sofa
- Skylight in Kitchen/Living room
- Spare tire and carrier
- Fiberglass front cap with LED lights
- Black tank flush

### OPTIONS

- Aluminum Rims (mandatory)
- LCD Remote System (mandatory)
- LED TV
- Free standing dinette with 4/ chairs
- 8 cu. Ft. Refrigerator
- Bi-fold range cover
- Solid surface countertops with sink covers
- Denver Supreme Upgrade Mattress
- 15,000 BTU A/C
- 50 amp service with 2nd A/C prep
- 2nd A/C in bedroom (must have 50 AMP)
- Rear ladder
- Bumper mount grill
- Power tongue jack
- Power leveling jacks (2 - FW, 4 - TT)
- Upgrade insulation
- Tri-fold Hide-A-Bed (IPO jack knife and trundle bed in bunk room, 31BH, 36DB, 32SB & 33BH)

\*VBM: Varies By Model

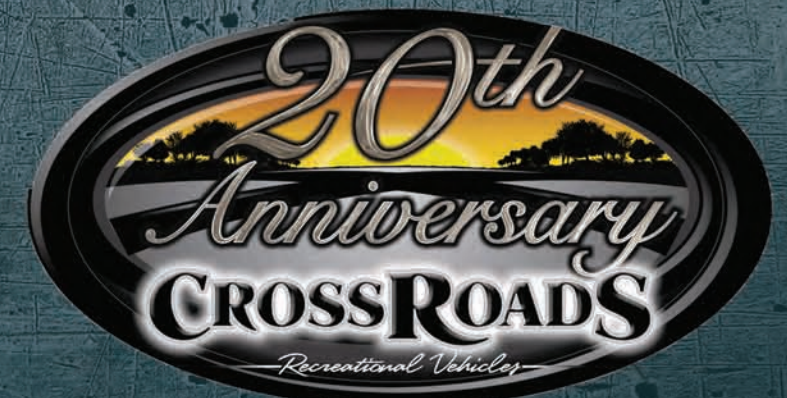
**CROSSROADS®**  
RECREATIONAL VEHICLES

1140 W Lake Street • Topeka, IN 46571 • [www.crossroadsrv.com](http://www.crossroadsrv.com)

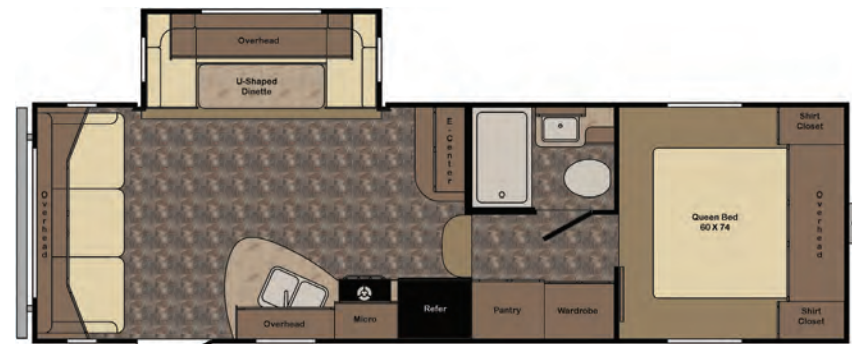
# REZERVE

## Floorplans & Specifications

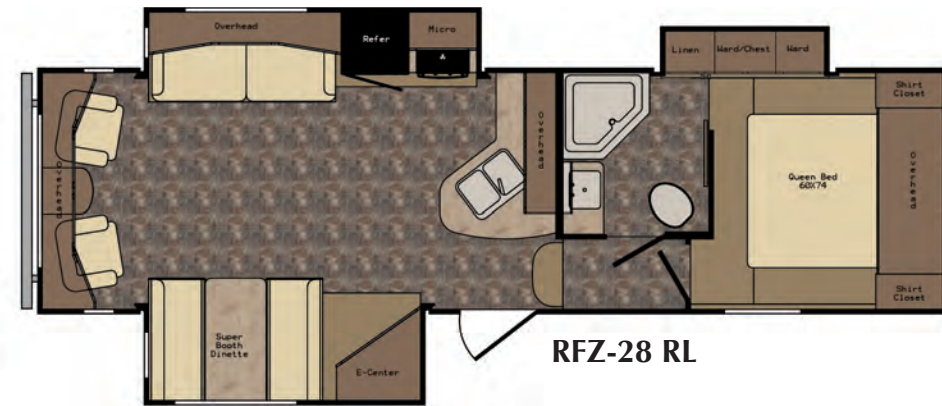
## Fifth Wheels



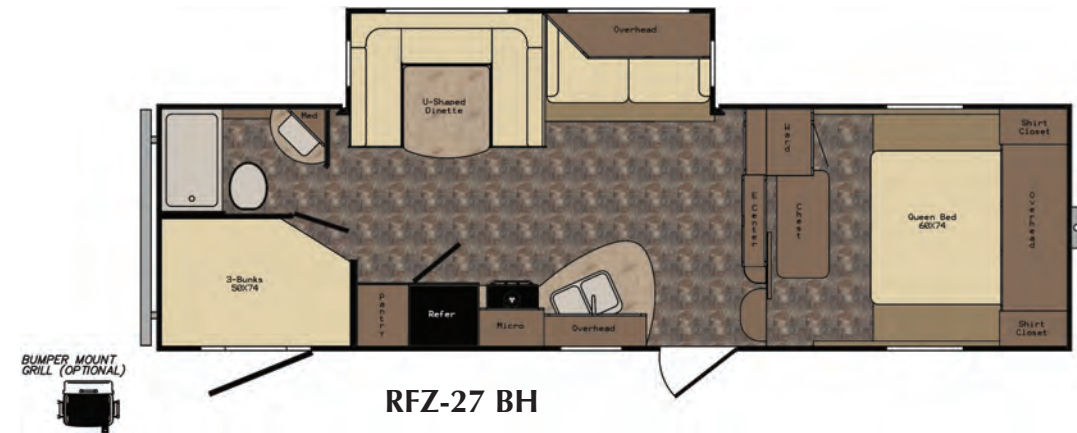




RFZ-24 RL



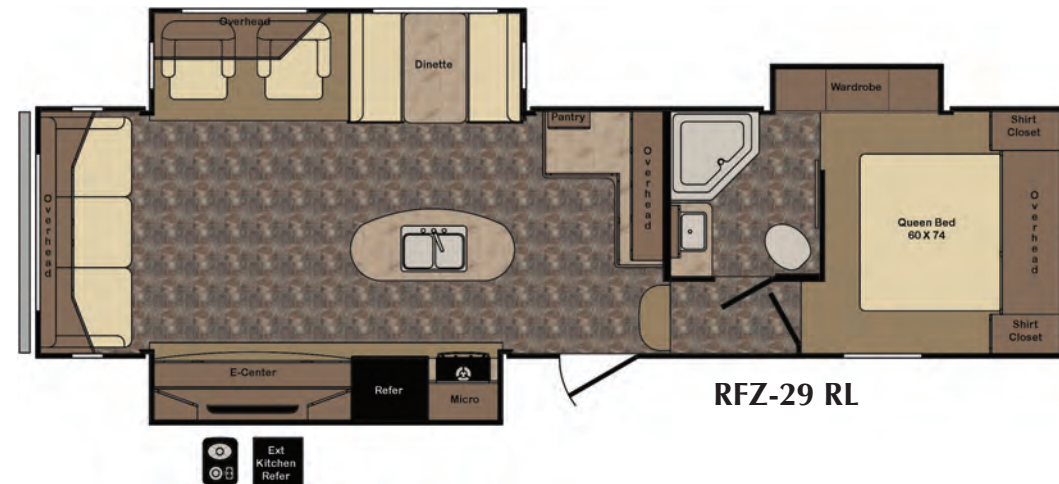
RFZ-28 RL



RFZ-27 BH



RFZ-31 BH



RFZ-29 RL

FIFTH WHEELS	RFZ-24 RL	RFZ-27 BH	RFZ-28 RL	RFZ-29 RL	RFZ-31 BH	RFZ-36 DB
DRY WEIGHT	6818	7041	7676	8645	8356	10666
GVWR	10124	10352	10412	11880	11696	13438
CARRYING CAP.	3306	3311	2736	3235	3340	2772
HITCH WEIGHT	1324	1552	1612	1720	1536	1838
EXTERIOR LENGTH	27' 11"	30' 6"	30' 6"	33' 6"	34' 11"	39' 11"
EXT. HEIGHT W/AC	12' 1"	12' 1"	12' 1"	12' 3"	12' 3"	12' 7"
FRESH WATER CAP.	54	54	54	54	54	54
BLACK WATER CAP.	40	40	40	40	40	80
GRAY / GALLEY CAP.	40	40	40	40	40	80
L.P. GAS	2 - 30# BOTTLES	2 - 30# BOTTLES	2 - 30# BOTTLES	2 - 30# BOTTLES	2 - 30# BOTTLES	2 - 30# BOTTLES
TIRE SIZE	225/75R15 D	225/75R15 D	225/75R15 D	225/75R15 D	225/75R15 D	235/80R16 E



RFZ-36 DB



## Standards & Options

### STANDARDS

#### LIVING ROOM

- Premium residential furniture
- Decorative glass in sofa slide-out cabinet doors
- Designer valances with hard lambrequin legs
- Chair rail in slide-out
- 7' Interior ceiling height (TT's)
- 6' 1" Ceiling in slide-out
- Decorative lights (VBM)
- Wood slide-out fascia
- Tri-fold H.A.B.
- AM/FM/CD/DVD Bluetooth stereo system
- Flush floor slide-out with large dinette windows
- Generous storage
- Storage drawers below booth dinette
- Living Room / Kitchen skylight

#### KITCHEN

- Super booth dinette (VBM)
- Range hood with light and exhaust fan
- High rise faucet
- Wall mounted systems monitor panel
- Ball bearings and drawer guides in drawers (rated for 70#s)
- Maple hardwood cabinet doors
- Maple cabinet drawers
- Microwave oven
- Range with oven
- 6 cu. Ft. Double door refrigerator

#### BATHROOM

- Large parchment color lavatory bowl
- Spacious shower/tub & one-piece surround
- Foot flush porcelain toilet
- Linen storage (varies by floor plan)
- Mirrored medicine cabinet
- Glass shower door & neo angle shower (VBM)
- Shower curtain with curved shower track (VBM)
- Skylight over tub (VBM)

### BEDROOM

- 60" X 74" Mattress
- TV hook-up
- Coordinated window treatments
- Night stands with outlets on each

### EXTERIOR

- 54 gallon fresh water tank
- Tinted safety glass windows
- Radial tires - nitro filled
- Easy open entry step
- Bumper with drain hose storage and end caps
- (2) Marine grade exterior speakers
- Molded rain gutters with 3" drip spouts
- Totally enclosed underbelly
- Outside shower
- Power landing gear (FW)
- Spare tire
- Electric awning w/LED lights
- Fiberglass front cap w/LED lights

### CONSTRUCTION

- One-piece rubber roof with 3" rolled roof wrap and 12 year manufacturer warranty
- 3/8" walkable roof decking
- 16" OC truss rafters with 4 1/2" crown
- R-7 Rated fiberglass roof insulation
- Rain gutters along entire roof line
- 13,500 Ducted A/C
- 16" OC stud placement in sidewalls, endwalls and slide rooms
- 5/8" floor decking
- R-7 Rated fiberglass sidewall insulation
- Steel I-beam frame
- R-7 Rated fiberglass floor insulation
- Maximum amount of linoleum throughout
- Moisture barrier wrapped floor
- 30" Radius entry door with screen
- Secure Stance axles (VBM)

### CONVENIENCE PACKAGE

#### (STANDARD)

- 3-Burner range with oven
- TV antenna
- Tub surround
- Water Heater Bypass
- Smoke detector
- LP detector
- 13,500 BTU A/C
- Fully enclosed and heated underbelly
- Electric Awning with LED lights
- Microwave
- Drawers under booth dinette
- Power vent in bath
- Large swing out entry assist handle
- 6 gallon gas/electric DSI water heater
- Night shades
- Outside shower
- Stabilizer jacks
- Skylight in Shower/Tub
- Laminated aluminum framed fiberglass sidewalls
- Sink covers
- Tri-fold Hide-A-Bed Sofa
- Skylight in Kitchen/Living room
- Spare tire and carrier
- Fiberglass front cap with LED lights
- Black tank flush

### OPTIONS

- Aluminum Rims (mandatory)
- LCD Remote System (mandatory)
- LED TV
- Free standing dinette with 4/ chairs
- 8 cu. Ft. Refrigerator
- Bi-fold range cover
- Solid surface countertops with sink covers
- Denver Supreme Upgrade Mattress
- 15,000 BTU A/C
- 50 amp service with 2nd A/C prep
- 2nd A/C in bedroom (must have 50 AMP)
- Rear ladder
- Bumper mount grill
- Power tongue jack
- Power leveling jacks (2 - FW, 4 - TT)
- Upgrade insulation
- Tri-fold Hide-A-Bed (IPO jack knife and trundle bed in bunk room, 31BH, 36DB, 32SB & 33BH)

\*VBM: Varies By Model

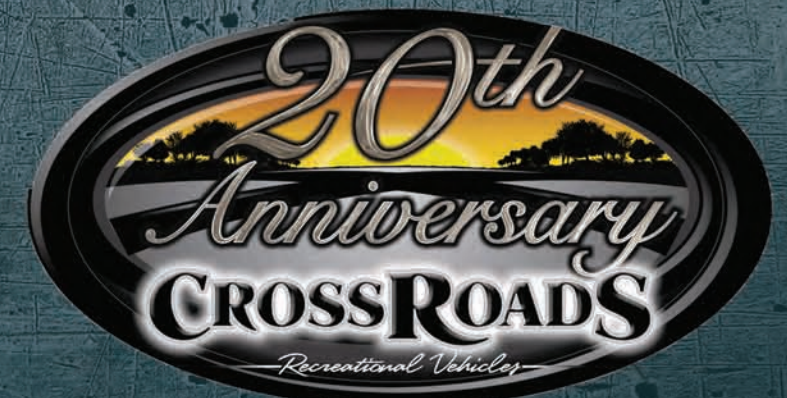
**CROSSROADS®**  
RECREATIONAL VEHICLES

1140 W Lake Street • Topeka, IN 46571 • [www.crossroadsrv.com](http://www.crossroadsrv.com)

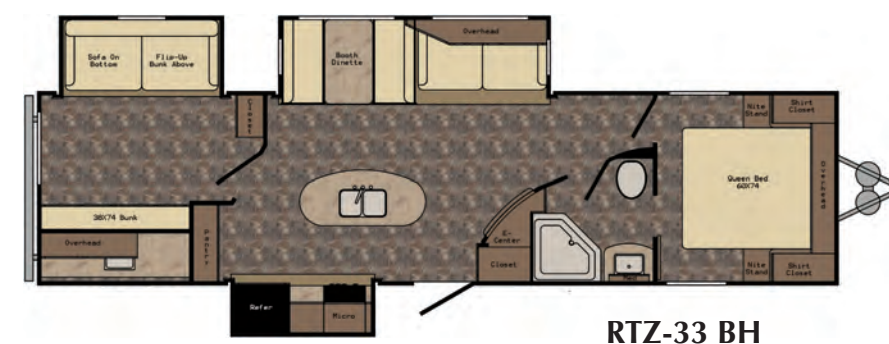
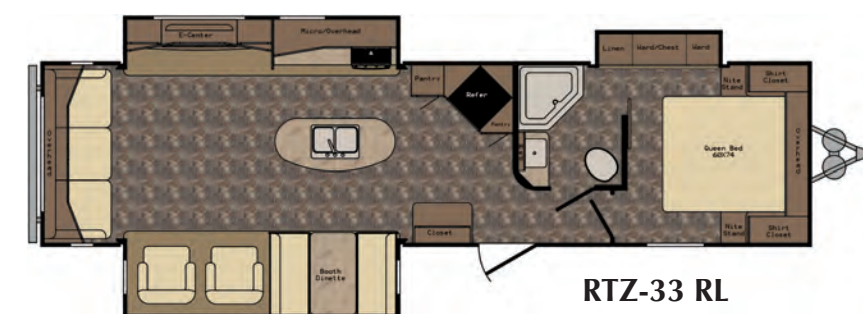
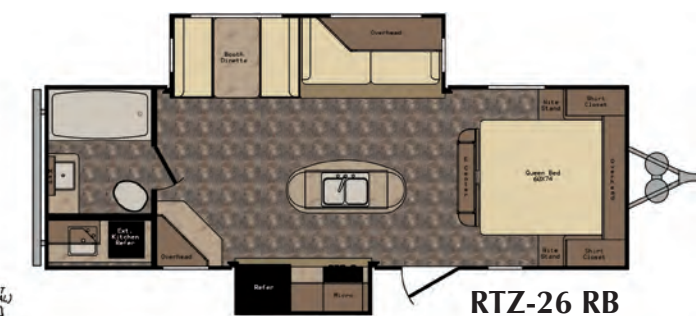
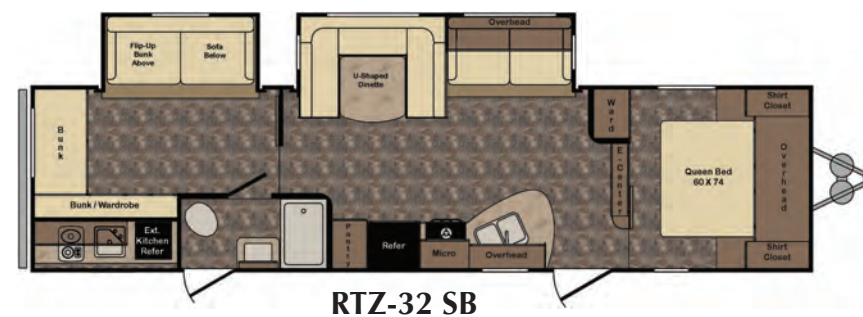
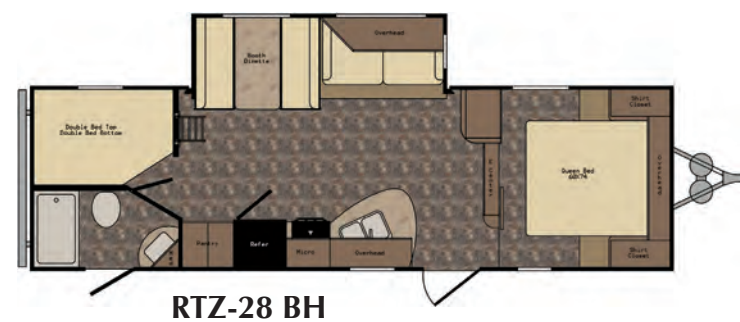
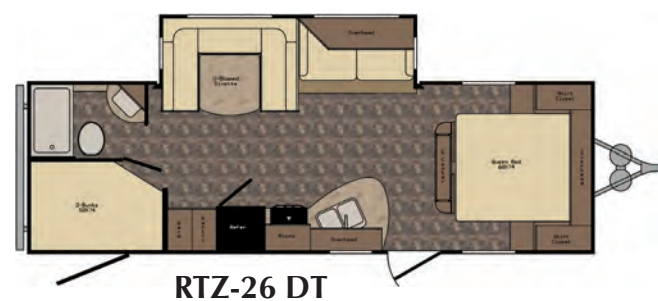
# REZERVE

## Floorplans & Specifications

## Travel Trailers







TRAVEL TRAILERS	RTZ-26 DT	RTZ-26 KS	RTZ-26 RB	RTZ-27 BK	RTZ-28 BH	RTZ-29 RK	RTZ-29 RL	RTZ-32 SB	RTZ-33 RL	RTZ-33 BH
DRY WEIGHT	6082	6822	6465	6760	6254	7006	7511	8306	8073	8455
GVWR	7812	9488	7834	9604	7850	9582	9530	11092	11154	11162
CARRYING CAP.	1730	2666	1369	2844	1596	2576	2019	2786	3081	2707
HITCH WEIGHT	812	688	834	804	850	782	730	932	994	1002
EXTERIOR LENGTH	29' 11"	29' 11"	28' 11"	31' 11"	31' 10"	33' 6"	33' 6"	37' 2"	36' 8"	36' 6"
EXT. HEIGHT W/AC	11' 5"	11' 7"	11' 5"	11' 5"	11' 5"	11' 5"	11' 5"	11' 7"	11' 7"	11' 9"
FRESH WATER CAP.	54	54	54	54	54	54	54	54	54	54
BLACK WATER CAP.	40	40	40	40	40	40	40	40	40	40
GRAY / GALLEY CAP.	40	80	80	40	40	80	80	40	80	80
L.P. GAS	2 - 30# BOTTLES	2 - 30# BOTTLES	2 - 30# BOTTLES	2 - 30# BOTTLES	2 - 30# BOTTLES	2 - 30# BOTTLES	2 - 30# BOTTLES	2 - 30# BOTTLES	2 - 30# BOTTLES	2 - 30# BOTTLES
TIRE SIZE	205/75R15 C	225/75R15 D	205/75R15 C	225/75R15 D	205/75R15 C	225/75R15 D	225/75R15 D	225/75R15 D	225/75R15 D	225/75R15 D