

Standards & Options

STANDARDS

LIVING ROOM

- Designer valances
- Wood Slide-out fascia (VBM)
- AM/FM stereo system with Bluetooth and AUX jack
- Three décor choices
- Mini blinds
- Sleeper sofa
- Woodgrain linoleum
- Generous storage

KITCHEN

- Range hood with light & exhaust fan
- High rise faucet
- Wall mounted systems monitor panel
- Raised panel upper and lower cabinet doors
- Maple cabinet doors
- Maple cabinet drawers
- Microwave oven
- Range with 3 burner cook-top
- 6 cu. ft. refrigerator
- Steel ball bearing drawer guides (rated or 70#s)

BATHROOM

- Large parchment lavatory bowl
- Spacious shower/tub & one-piece surround
- Foot flush porcelain toilet
- Mirrored medicine cabinet
- Shower curtain with curved shower track

BEDROOM

- 60" X 74" Mattress (N/A in 208FL)
- Cable TV hook-up
- Coordinated window treatments

EXTERIOR

- Rounded, aerodynamic front end
- 40 gallon fresh water tank (54 on toy deck models & 328SB)
- Easy open entry step
- Bumper with drain hose storage and end caps
- (2) Marine grade exterior speakers
- Diamond plate front stone guard
- Seamless one piece rubber roof with 12 year manufacturer warranty
- Molded rain gutters with 3" drip spouts
- 6 gallon gas DSI water heater
- 30" Main radius entry door with screen door (VBM)

SAFETY

- Safety chains
- Break away switch
- Electric brakes on all wheels
- Carbon monoxide detector
- Fire extinguisher
- GFI electrical outlets
- Tinted safety glass
- 15" Radial tires - nitrogen filled

CONVENIENCE PACKAGE (STANDARD)

- Smoke detector
- LP detector
- 13,500 BTU A/C
- Awning
- Microwave
- Stabilizer jacks (4)
- Power vent in bathroom
- TV antenna
- Tub surround
- Water heater bypass
- Quilted reversible bedspread

OPTIONS

- Electric Awning (mandatory)
- LCD Remote System on slideout models (mandatory)
- Skylight in kitchen/living room
- LED TV
- Oven
- Denver Supreme Mattress
- Outside shower
- LP bottle cover
- Spare radial tire
- 15,000 BTU A/C
- 6 gallon gas/electric DSI water heater
- Power tongue jack

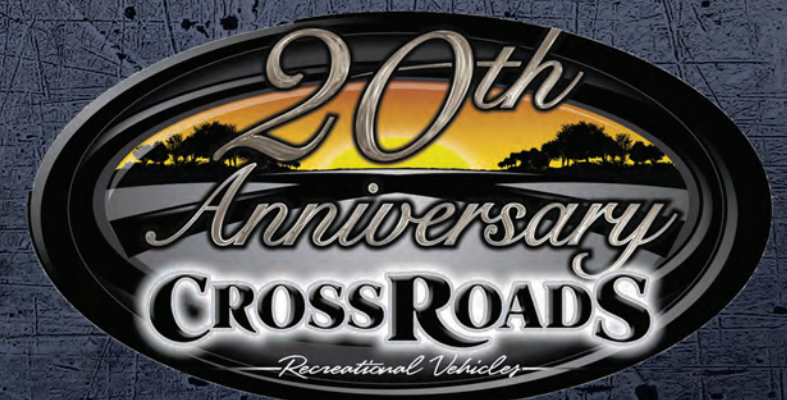
VBM: Varies By Model

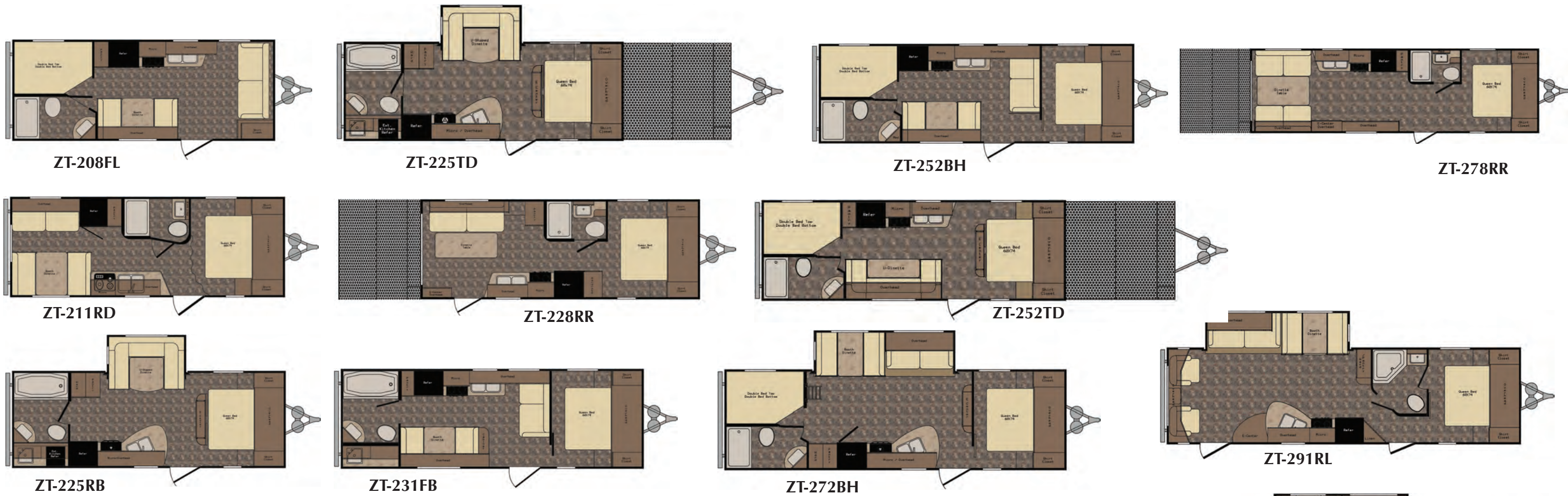
Z-1

Floorplans & Specifications

CROSSROADS®
RECREATIONAL VEHICLES

1140 W Lake Street • Topeka, IN 46571 • www.crossroadsrv.com





Z-1	ZT-208FL	ZT-211RD	ZT-225RB	ZT-225TD	ZT-228RR	ZT-231FB	ZT-252BH
DRY WEIGHT	3994	4065	5198	5992	4495	4495	4751
GVWR	7398	7506	7612	9442	7488	7576	7576
CARRYING CAP.	3404	3441	2414	3450	2993	3081	2825
HITCH WEIGHT	398	506	612	642	488	576	576
EXTERIOR LENGTH	23' 11"	24' 11"	25' 11"	35' 11"	25' 1"	27' 6"	28' 6"
EXT. HEIGHT W/AC	10' 3"	10' 3"	10' 11"	11' 2"	10' 4"	10' 3"	10' 3"
FRESH WATER CAP.	40	40	45	45	45	40	40
BLACK WATER CAP.	26	26	26	26	26	26	26
GRAY / GALLEY CAP.	52	26	52	52	26	26	52
L.P. GAS	2 - 20# BOTTLES	2 - 20# BOTTLES	2 - 20# BOTTLES	2 - 20# BOTTLES	2 - 20# BOTTLES	2 - 20# BOTTLES	2 - 20# BOTTLES
TIRE SIZE	205/75R15 C	205/75R15 C	205/75R15 C	225/75R15 D	205/75R15 C	205/75R15 C	205/75R15 C

Z-1	ZT-252TD	ZT-272BH	ZT-278RR	ZT-291RL	ZT-301 BH	ZT-302 KB	ZT-328SB
DRY WEIGHT	5725	5806	5075	6190	6130	6244	7270
GVWR	9470	7720	7746	7678	7846	7796	9684
CARRYING CAP.	3745	1914	2671	1488	1716	1552	2414
HITCH WEIGHT	670	720	746	678	846	796	884
EXTERIOR LENGTH	37' 9"	30' 4"	30' 4"	32' 7"	32' 9"	32' 9"	35' 11"
EXT. HEIGHT W/AC	11' 2"	10' 11"	10' 4"	10' 11"	10' 11"	10' 11"	11' 1"
FRESH WATER CAP.	45	45	45	45	45	45	45
BLACK WATER CAP.	26	26	26	26	40	40	40
GRAY / GALLEY CAP.	52	52	52	26	40	40	40
L.P. GAS	2 - 20# BOTTLES	2 - 20# BOTTLES	2 - 20# BOTTLES	2 - 20# BOTTLES	2 - 20# BOTTLES	2 - 20# BOTTLES	2 - 20# BOTTLES
TIRE SIZE	225/75R15 D	205/75R15 C	205/75R15 C	205/75R15 C	205/75R15 C	205/75R15 C	225/75R15 D

