

Berkshire XL

BY FOREST RIVER MOTOR HOMES DIESEL DIVISION



U N C O M P R O M I S E D L U X U R Y



4 0 B H



Berkshire XL

W E L C O M E T O B E R K S H I R E X L

ONYX INTERIOR, EXOTIC CHERRY CABINETS
COCKPIT - KITCHEN - LIVING AREA



Y O U ' V E A R R I V E D

THE ELEGANT FEEL OF THE BERKSHIRE XL IS ACHIEVED BY MIXING RICH WOOD TONES WITH ELEGANT FINISHES, SUCH AS REAL PORCELAIN TILE FLOORING AND SOLID SURFACE COUNTERTOPS. WITH INTERIOR DECOR OPTIONS PROFESSIONALLY COORDINATED BY OUR DESIGNERS, YOU ARE SURE TO FIND SOMETHING THAT WILL PLEASE YOU. THE COCKPIT IS THE EPITOME OF FORM AND FUNCTION AND ADJUSTS EASILY FOR TRUE TRAVELING COMFORT.



Berkshire XL

W E L L A P P O I N T E D

ONYX INTERIOR, EXOTIC CHERRY CABINETS
KITCHEN - LIVING AREA



E N T E R T A I N M E N T

YOU WILL FEEL RIGHT AT HOME IN THE 40BH, THE THOUGHTFULLY DESIGNED KITCHEN FLOWS EFFORTLESSLY INTO THE LIVING AREA AND HAS ALL THE AMENITIES OF HOME INCLUDING PLENTY OF STORAGE. THE 39" LED HD TV WITH SLIDE THAT IS VIEWABLE FROM MANY ANGLES INVITES YOU RIGHT INTO THE ACTION FROM THE COMFORT OF THE EXPANSIVE COMFORT FIT COUCH BY VILLA.

4 0 B H



Berkshire XL

T O T A L C O M F O R T

ONYX INTERIOR, EXOTIC CHERRY CABINETS
MASTER BEDROOM - BATHROOM - BUNKROOM



R E S T A S S U R E D

FRIENDS AND FAMILY WILL BE DELIGHTED WHEN THEY REALIZE THEY HAVE AN AREA TO THEMSELVES. WHETHER THEY ARE WATCHING A DVD OR PLAYING THEIR FAVORITE GAME, THEY WILL DO SO IN COMPLETE COMFORT. THE INNOVATIVE DESIGN ALLOWS THE TOP BUNK TO FOLD UP AND OUT OF THE WAY TO CREATE A SPACIOUS HANGING CLOSET ALLOWING FOR MORE STORAGE.

4 0 B H



Berkshire

R E S I D E N T I A L S T Y L I N G

TOPAZ INTERIOR, EXOTIC CHERRY CABINETS
KITCHEN - LIVING AREA

B E R K S H I R E X L F E A T U R E S



STANDARD FIREPLACE



EASILY ACCESSIBLE ELECTRICAL FUSES WITH BERKSHIRE XL'S NO FUSS SCHEMATIC



STANDARD 39" EXTERIOR ENTERTAINMENT CENTER IN SIDEWALL



SLIDE-OUT GENERATOR TRAY

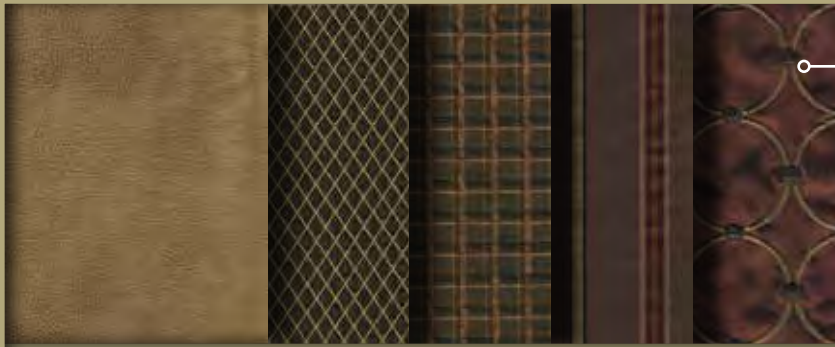


STANDARD CAFE COMPARTMENT DOORS WITH PASS THRU STORAGE AND STANDARD SLIDE-OUT STORAGE TRAY

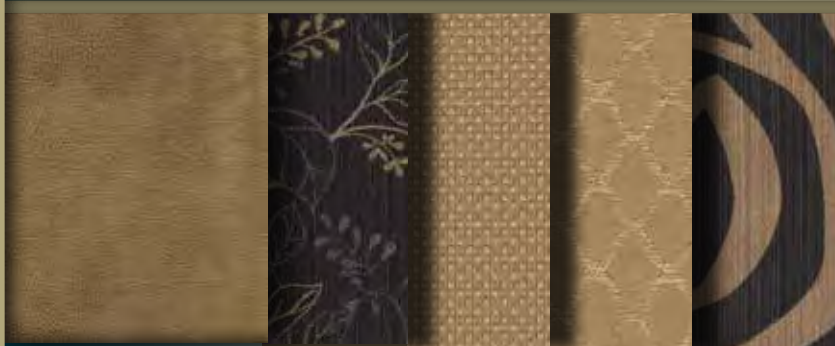


BERKSHIRE XL'S WATER MANIFOLD SYSTEM WITH WHOLE UNIT FILTER AND EXTERIOR SHOWER

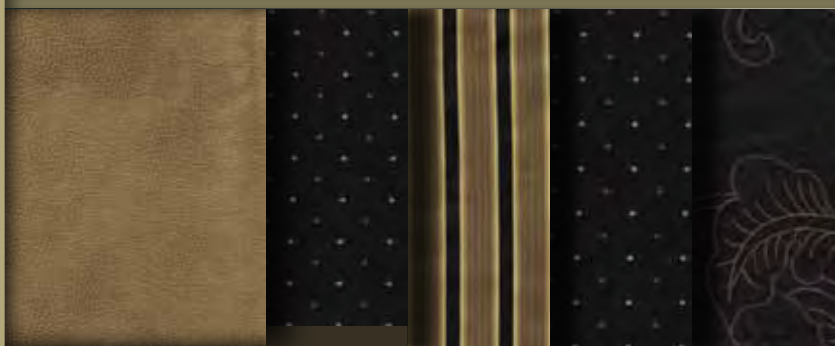
DECORS



TOPAZ DECOR



SAPPHIRE DECOR



ONYX DECOR

EXOTIC CHERRY HARDWOOD

BROOKSIDE COGNAC HARDWOOD

CHASSIS STANDARDS

- ∞ Cummins® ISB-XT turbo diesel 6.7 liter, 360 HP @ 2600 RPM, 800 ft. lbs. torque @ 1800 RPM
- ∞ Allison 3000MH 6-speed transmission
- ∞ 10,000 lb. receiver hitch
- ∞ polished aluminum wheels
- ∞ 100 gallon, dual fill fuel tank
- ∞ Day time running lights
- ∞ 7-Pin tow power connector
- ∞ 18.7 CFM air compressor
- ∞ Farr® Eco-air cleaner
- ∞ Air filter restriction indicator
- ∞ Fuel/water separator
- ∞ Heated air dryer
- ∞ Automatic, heated moisture ejectors
- ∞ Power steering
- ∞ Washer/wiper w/ intermittent function
- ∞ 160 amp alternator
- ∞ (2)1900 CCA maintenance free batteries
- ∞ 120V Engine block heater

BRAKES

- ∞ Full air w/ auto slack adjuster
- ∞ Automatic brake system
- ∞ Integral exhaust brake w/ variable turbo

SUSPENSION

- ∞ Neway® air suspension front & rear
- ∞ Sachs® custom tuned shock absorbers
- ∞ Heavy duty stabilizer bar
- ∞ 55 degree wheel cut
- ∞ I-beam suspension w/ bell crank
- ∞ Air suspension deflation system

COOLING SYSTEM

- ∞ Cross flow, rear mounted radiator
- ∞ Transmission oil cooler
- ∞ 5 year/100,000 mile coolant (some maintenance required)

STEERING WHEEL

- ∞ 4-Spoke VIP black steering wheel

- ∞ Electronic cruise control w/ high idle
- ∞ Telescopic/tilt steering wheel

STRUCTURAL STANDARDS

- ∞ Steel basement construction
- ∞ Automotive & foam seal undercoating
- ∞ Vacuum bonded floor
- ∞ Tubular aluminum frame
- ∞ 1/2" structure wood flooring
- ∞ 2 lb. density, block foam polystyrene insulation
- ∞ Vacuum bonded sidewalls
- ∞ Gel-coated fiberglass skin
- ∞ Crowned & layered vacuum bonded roof
- ∞ Fiberglass roof
- ∞ Channeled drains for AC's
- ∞ Steel firewall with 2 lb. density, block foam polystyrene insulation
- ∞ Tubular steel front bulkhead
- ∞ Fiberglass front and rear caps
- ∞ 84" interior ceiling height

EXTERIOR STANDARDS

- ∞ Full body painted exterior (Sikkens® 4x clear coat)
- ∞ Diamond Shield® front mask protective film
- ∞ Hehr® frameless dual pane, dark tint windows (including (2) exit windows)
- ∞ Side-hinged "gate style" exterior compartment doors w/ full pass through storage
- ∞ Power stepwell cover
- ∞ (4) Point fully automatic Equalizer® hydraulic leveling system w/ auto dump
- ∞ 2000W Pure Sine inverter/converter
- ∞ (4) Six volt house batteries
- ∞ (2) Master electric shut off switches
- ∞ Individual zoned manifold water supply system
- ∞ Variable speed constant pressure water pump
- ∞ All coach water filtration system
- ∞ Slide-out storage tray
- ∞ Exterior entertainment center in sidewall
- ∞ Power entry door awning
- ∞ Power main awning w/ LED lights
- ∞ Key one door locks

STANDARDS AND OPTIONS

- ∞ Auto generator start
- ∞ Lighted exterior assist handle
- ∞ (2) 20,000 BTU furnaces
- ∞ Girard® tankless water heater w/ continuous flow
- ∞ 24.5 gallon propane tank
- ∞ Black water tank flush system
- ∞ Power entrance step
- ∞ Patio light
- ∞ Shower skylight
- ∞ Heated pads for all water & holding tanks
- ∞ Full length mud flap w/ chrome trim
- ∞ (2) Piece rear ladder
- ∞ 8.0 Onan® diesel generator w/ full slide tray
- ∞ Auxiliary LP hook-up (passenger side)
- ∞ Auxiliary air chuck (front firewall)
- ∞ LH and RH side fuel fill

DRIVER/PASSENGER AREA STANDARDS

- ∞ One piece windshield w/ power sun & blackout shades
- ∞ Dash radio w/ integrated back-up and side camera package & GPS / Nav. / MP3 / Bluetooth
- ∞ Wrap around cockpit w/ (9) gauge instrument cluster
- ∞ LCD engine message center
- ∞ 6-Way power driver seat w/ 360 degree swivel & recliner
- ∞ Power footrest on passenger seat
- ∞ Passenger seat w/ 360 degree swivel & recliner
- ∞ Passenger side laptop console
- ∞ Lighted step well
- ∞ Sirius satellite radio capable
- ∞ (2) Stereo speakers throughout coach
- ∞ Satellite TV prep
- ∞ Remote generator start switch (on dash)
- ∞ 32" LED TV in cockpit O/H (NA 40RB)
- ∞ Individual map lights
- ∞ Driver/passenger cup holders
- ∞ Automotive dash AC/heater w/ deluxe controls
- ∞ Electronic battery disconnect switch

LIVING/DINING/GALLEY STANDARDS

- ∞ LED lighting package
- ∞ LED color TV
- ∞ High def (CAT6) distribution control box for entertainment electronics
- ∞ Sony® Blue-Ray player
- ∞ Sound bar w/ bass woofer & mid range tweeter
- ∞ (3) Interior décor choices
- ∞ Dream booth dinette w/ storage underneath (40BH only)
- ∞ Electric fireplace
- ∞ "Soft Touch" love seat (40BH only)
- ∞ Contoured overhead cabinets in slide-out rooms
- ∞ Carpeted living room & dining area slide rooms
- ∞ 18" polished tile w/ inserts forward of the bedroom
- ∞ "Soft Touch" padded ceiling
- ∞ Fantastic Fan in galley area
- ∞ MCD® roller style sun & blackout shades
- ∞ Solid surface counter tops w/ flush mount stainless sink & stove covers
- ∞ Full extension metal drawer guides w/ ball bearings, soft close kitchen
- ∞ Single lever faucet w/ pull-out sprayer
- ∞ 30" convection/microwave oven
- ∞ Residential style refer
- ∞ Sealed 3-burner recessed cook top
- ∞ Galley storage compartment for range & sink covers
- ∞ Residential hardwoods by Native Hardwoods throughout
- ∞ Ducted integrated "Whisper Quiet" air throughout
- ∞ 2 Low profile 15,000 BTU A/C's w/ heat pump

LIVING/DINING/GALLEY OPTIONS

- ∞ Free standing dinette w/ hutch & 4 chairs (40BH only)
- ∞ "Soft touch" hide-a-bed sofa
- ∞ 12 cu. ft. side-by-side refrigerator w/ ice maker
- ∞ Satellite dome

BATHROOM AREA STANDARDS

- ∞ Extra large lavatory bowl sink
- ∞ Double lever lavatory faucets
- ∞ One piece fiberglass shower w/ glass door
- ∞ Porcelain china toilet (w/ Macerator rear bath 40RB)
- ∞ Mirrored medicine cabinets
- ∞ Towel bars
- ∞ Fan in bathroom & lavatory area
- ∞ China toilet w/ Macerator

BEDROOM AREA STANDARDS

- ∞ 60" x 80" island queen bed w/ bedspread & decorative pillows (40BH)
- ∞ 72" x 80" king bed w/ bedspread & decorative pillows (40QL & 40RB)
- ∞ Bedside wardrobe w/ shoe rack
- ∞ Dresser drawers & wardrobe type cabinets
- ∞ (2) Flip down LCD monitors w/ DVD & AV input (40BH only)
- ∞ Overhead cabinets
- ∞ 32" LCD TV
- ∞ LED lighting package w/dimmer controls
- ∞ Individual reading lights
- ∞ Stackable washer/dryer prep
- ∞ Carpet w/ padding
- ∞ Night stands
- ∞ Serta® mattress
- ∞ Egress window
- ∞ 15,000 BTU A/C low profile
- ∞ Ducted integrated "Whisper Quiet" air

BEDROOM/BATHROOM OPTIONS

- ∞ Stackable washer/dryer

SAFETY STANDARDS

- ∞ 110 GFI protected circuits
- ∞ Carbon monoxide detector
- ∞ LP gas detector
- ∞ Smoke alarm
- ∞ Surface mounted fire extinguisher

P E O P L E W I L L T A L K

YOU WILL BE THE TALK OF THE TOWN WITH ANY OF OUR 4 EXTERIOR FULL BODY PAINT SCHEMES. PROFESSIONALLY DESIGNED WITH GREAT PRECISION, THEY COMPLIMENT THE INTERIOR OF THE BERKSHIRE. ENHANCED WITH SIKKENS 4X CLEARCOAT, IT'S NOT JUST MADE TO LOOK GOOD, IT'S MADE TO LAST.



EQUALIZER (4) Point fully automatic
SYSTEMS Equalizer® hydraulic
leveling system w/ auto
dump.

EXTERIOR COLOR OPTIONS

Berkshire XL

WINDSOR
PARK



Berkshire XL

LONDON
MIST



Berkshire XL

ENGLISH
BURGUNDY



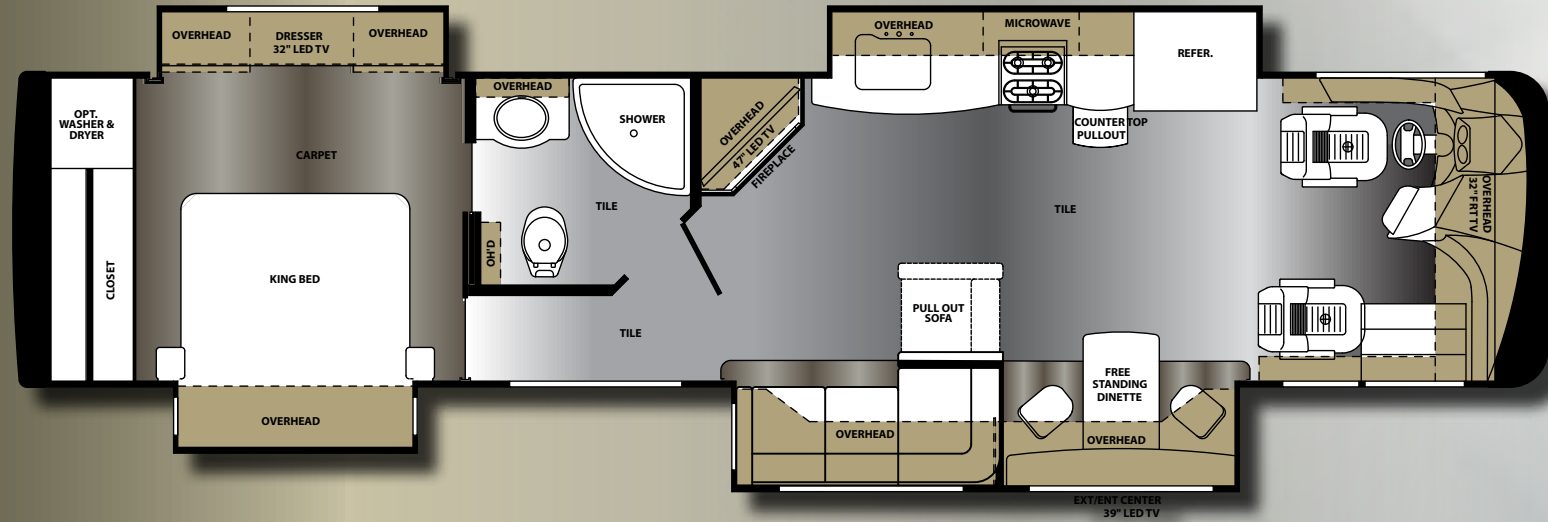
Berkshire XL

CASTLE
GRAY

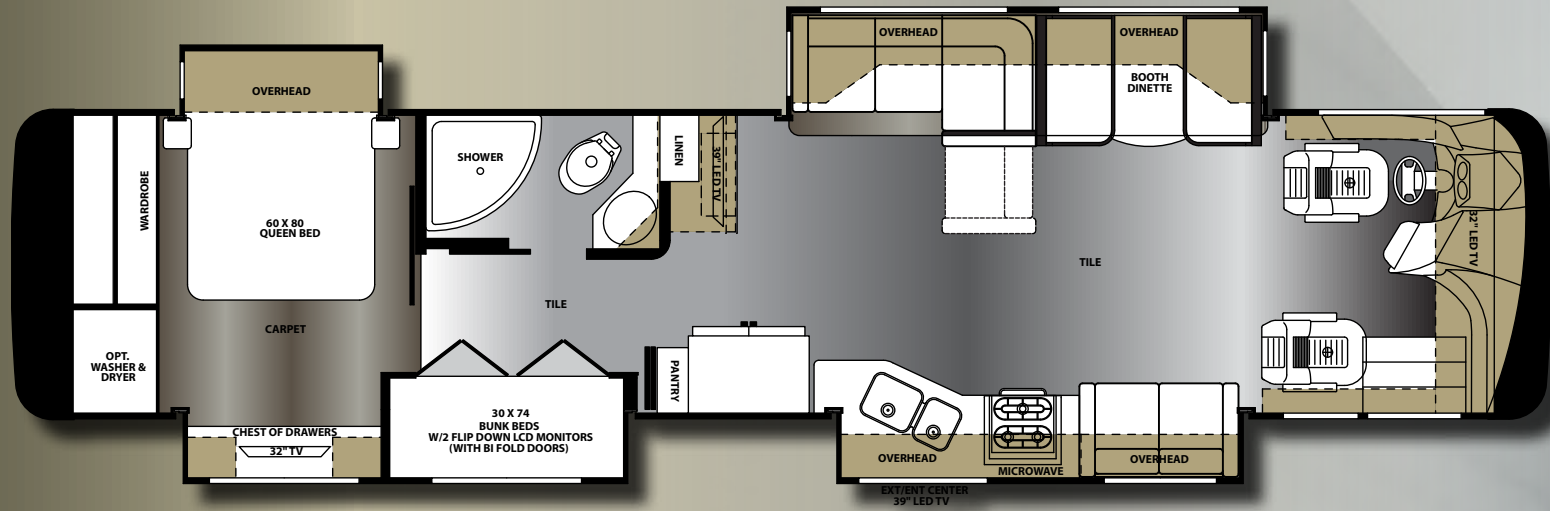


BERKSHIRE XL FLOOR PLANS

40QL



40BH



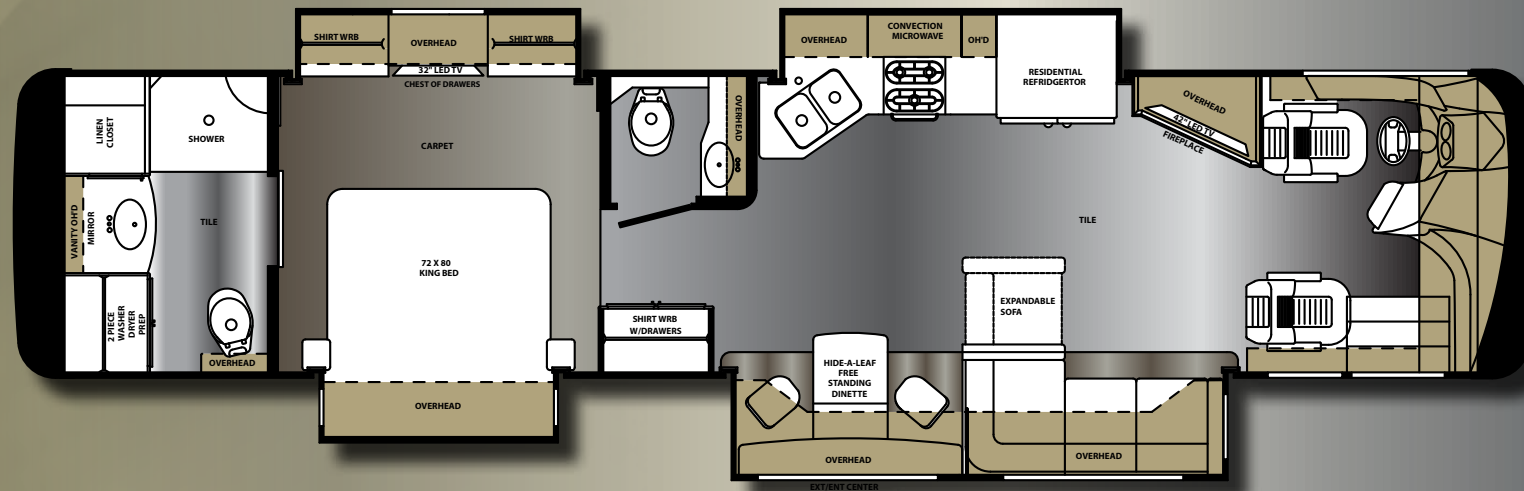
MODEL	40QL	40BH	40RB
*APPROX. OVERALL LENGTH	41'	41'	41'
OVERALL WIDTH	100"	100"	100"
APPROX. HEIGHT	12' 5"	12' 5"	12' 5"
INTERIOR WIDTH	95.5"	95.5"	95.5"
INTERIOR HEIGHT	84"	84"	84"
GREY TANK (GAL)	60	60	60
BLACK TANK (GAL)	44	44	44
FRESH WATER TANK (GAL)	86	86	86
LP (GAL)	24.5	24.5	24.5
FURNACE OUTPUT (BTU)	40,000	40,000	40,000
CONTINUOUS HOT WATER	Tankless	Tankless	Tankless
APPROX. EXT BASEMENT STORAGE (CU. FT.)	183	183	183
WHEELBASE	266"	266"	266"

STANDARD PACKAGE (ALL CUMMINS ENGINE: ISB 360HP)

TORQUE (FT./LB.)	800
TRANSMISSION	Allison 3000MH
HITCH RATING (LBS.)	10,000
WHEELS	Aluminum
FRONT GAWR (LBS.)	12,000
REAR GAWR (LBS.)	19,000
GVWR (LBS.)	31,000
GCWR (LBS.)	41,000
FUEL TANK (GAL)	100
DEF TANK (GAL)	13
TIRES	275/70R22.5

*Approximate Overall Length Shown W/O Rear Ladder. Add 6" with Rear Ladder

4 0 R B





Forest River, Inc. encourages our customers to purchase their Forest River products from a local dealership whenever possible for the following reasons:

- 1) Forest River, Inc. dealers are independently owned and operated businesses so priority service and scheduling is at their discretion and is often provided to customers that purchased their unit at that dealership.
- 2) Purchasing locally allows customers to establish meaningful relationships with a dealer, enhancing the RV experience through assistance with product questions, user tips or RV regulations for your state or country, and much more!
- 3) Canadian customers must meet requirements to bring an RV purchased out of the country to their home. These requirements may involve additional inspections and certifications, taxes and fees. Your local Canadian Dealer is a professional at meeting these requirements
- 4) Scheduling timely warranty repairs and adjustments through a local dealership provides far greater flexibility and convenience to you, the customer!

It is the goal of Forest River, Inc. that all of our RV owners fully enjoy the RV experience and that customer satisfaction meets or exceeds their expectations!



PRE-DELIVERY INSPECTION FACILITY

20,000 square feet of quality assurance. The bare essentials for a premium product. This state-of-the-art facility gives immediate daily feedback to production for quality assurance in every unit built.

Berkshire XL

BY FOREST RIVER MOTOR HOMES DIESEL DIVISION

NAMED AFTER ITS PARENT COMPANY, THE BERKSHIRE XL CLASS A MOTORHOME IS THE FLAGSHIP OF OUR FLEET. ONLY THE FINEST APPOINTMENTS AND ATTENTION TO DETAIL GO INTO BUILDING IT. WITH THIS IN MIND, THE BERKSHIRE XL LIVES UP TO IT'S NAME IN BOTH QUALITY AND VALUE. FOREST RIVER IS PROUD TO BE PART OF THE BERKSHIRE HATHAWAY FAMILY.



YOUR BERKSHIRE XL DEALER



Learn More

Scan this barcode using a QR Reader on your smart phone to learn more about Forest River.



A Berkshire Hathaway company.

Forest River, Inc. - Diesel Motorized Division
1800 West Hively Avenue, Elkhart, IN 46515
(574) 522-3693 www.forestriverinc.com/berkshire

All specifications contained herein are based on the latest product information at time of printing. Forest River reserves the right to make changes in colors, materials, equipment and specifications at any time without notice and assumes no responsibility for any errors in this brochure. The pictures in this brochure may show props and optional equipment. PLD918

© 2015 - Berkshire XL - a division of Forest River Inc.
A Berkshire Hathaway company