

# REACTOR

Travel Trailer Toy Haulers

Adventure Begins  
with a  
Spark of Genius



EVER GREEN  
RECREATIONAL VEHICLES

# The Compact, Lightweight Reactor is Trail Ready.



## Why settle when you can reinvent?

EverGreen has forever altered the toy hauler category with the more affordable, lightweight Reactor. Floorplans ranging in length from 24 to 28 feet all with a 102-inch wide body design, create a lightweight toy hauler with an open interior like no other. The spacious living area is attributed to a 101-inch barrel ceiling allowing more headroom. An expansive bathroom and enough room to sleep up to eight adults comfortably add to the appeal of the lightweight, affordable Reactor.

Reactor toy hauler interior walls are built with a tough laminated inner shell, our DuraLite™ Double Welded Aluminum Structure sidewall, and finished in a high-gloss exterior gel-coat. Beauflor flooring throughout resists moisture, rot and mildew—far superior to spray on floors.



**Opposing 72-inch sofas add plenty of room for guests. Fold them down at night to sleep two adults comfortably.**

19FK



**The HappiJac bunk system at the rear of the Reactor allows everyone to sleep peacefully.**

19FK

# Power is in your reach wherever you take the Reactor.



## Affordable Road Ready Utility.

Although lightweight, the Reactor garage is full of quality standard features. Garages range in length from just over 11 to 14-feet and boast 7 foot, 6 inch ramp doors for safer loading and unloading. When it's time to move on down the road, 6,000-pound D-ring tie-downs mounted to the frame keep all your toys secure.

Taking trips well off the beaten path is no problem with the Reactor's standard equipment. Equipped with an 18-gallon fuel tank and pump system, dual 20-pound LP tanks, 106-gallon fresh water tank, on most models, and 41-gallon gray and black water tanks, the Reactor is outfitted specially to keep you out on the trail longer.

## Lightweight Design, Heavy-Duty Construction.

Built on the DuraLite™ Double Welded Aluminum Structure, the Reactor is built to tackle rough back roads and two tracks. The double welded frame is stronger than screwed frames and extra framing placed around all window, door and baggage compartment openings give the structure added strength and rigidity.

Reactor's floor system is set above the axles for increased ground clearance. Combine this with the EZ-lube leaf spring suspension system for a smooth ride.

**Take the toys out and entertain with plenty of seating and table space for everyone. The 23FB is shown here with optional barrel seating in place of the sofa.**



23FB



21SA

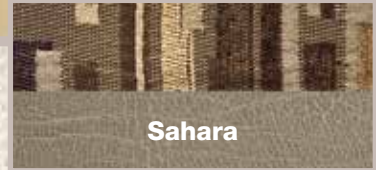
**The three burner cooktop has a cover, so you can utilize the space even when your not cooking.**

**Choose two optional barrel chairs in place of the sofa.**

23FB



# Reactor Interior Color Selections



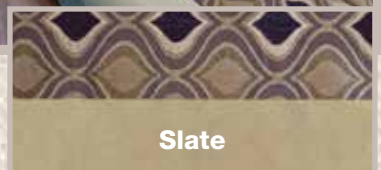
Sahara



Graphite



Carbon



Slate

# No one builds Toy Haulers like EverGreen.

Take the time to compare because there is an "EverGreen Difference." Since we revolutionized the RV industry with the Ever-Lite travel trailer, we've been busy focusing on the innovation front with new manufacturing and material specifications to build a better trailer for your family.

## Construction Features

### Walls

- 1 Fully welded aluminum frame
- 2 High-density, block foam insulation
- 3 Large frameless style windows for superior ventilation
- 4 Glossy fiberglass-reinforced exterior

### Roof

- 5 Fully crowned roof
- 6 Fully insulated
- 7 Full 101-inch interior height
- 8 Reflective, white roofing

### Floor

- 9 Enclosed underbelly
- 10 Fully welded aluminum frame
- 11 Underbelly with dust barrier
- 12 Marine plywood in garage area
- 13 High-density, block foam insulation
- 14 Padded "No-Crack" vinyl floor
- 15 8-inch steel I-beam frame

## DuraLite™ Double Welded Aluminum Structure



The Reactor is built on the DuraLite Double Welded Aluminum Structure. It includes aluminum frame construction in the walls and floors with header framing around all doors, windows and baggage door openings. Our strong, durable frame eliminates flexing for a longer lasting coach.



## Crowned Roof Provides Ample Headroom

Reactor 5" full barrel ceilings create more space in the garage and living area, more than 8-feet.



# Standard Features and Optional Packages

## CONSTRUCTION

- Higher ground clearance
- DuraLite Double Welded Aluminum Structure in walls and floor
- 6,000-pound D-ring tie-downs mounted to frame
- EZ lube hubs 6,000-pound axles
- 101-inch interior height
- 7 1/2-foot ramp door height
- 3,000 pound capacity ramp door
- Massive pass through storage
- Built to Canadian CSA standards

## INTERIOR

- 6-cubic foot double door refrigerator
- Two jack knife sofas
- Rear power bed with bottom lounge
- Overhead storage cabinets/shelves with cargo netting
- Queen bed in bedroom
- Two large wardrobes in bedroom (select models)
- Radio with DVD and CD player
- Microwave with built in range hood
- Rear roll down screen
- 101-inch interior height with industry first 5" full "barrel ceiling"
- 3-burner stove
- Porcelain foot flush toilet

## EXTERIOR

- Aluminum wheels
- One piece rubber roof
- High gloss gel coat finish
- 15-inch wheels
- Heated and enclosed underbelly
- Detachable power cord
- Welded toy lock connection
- Pass through storage - Select models
- Front diamond plate stone guard

## UTILITY

- EZ lube 6,000 pound axles
- Six gallon DSI water heater
- 100-gallon fresh water tank
- 41-gallon gray water tank
- 41-gallon black water tank with flush
- Quick connect water port
- Dual 20 pound LP tanks with crimped rubber lines
- Monitor panel
- 18-gallon generator fuel tank

## INTERIOR OPTIONS

- Stereo Upgrade/Kicker Marine Speakers with LCD
- 10-inch Kicker Sub-Woofer with Power Amp
- Two Barrel Chairs in Place of Sofa
- 32-inch LCD TV

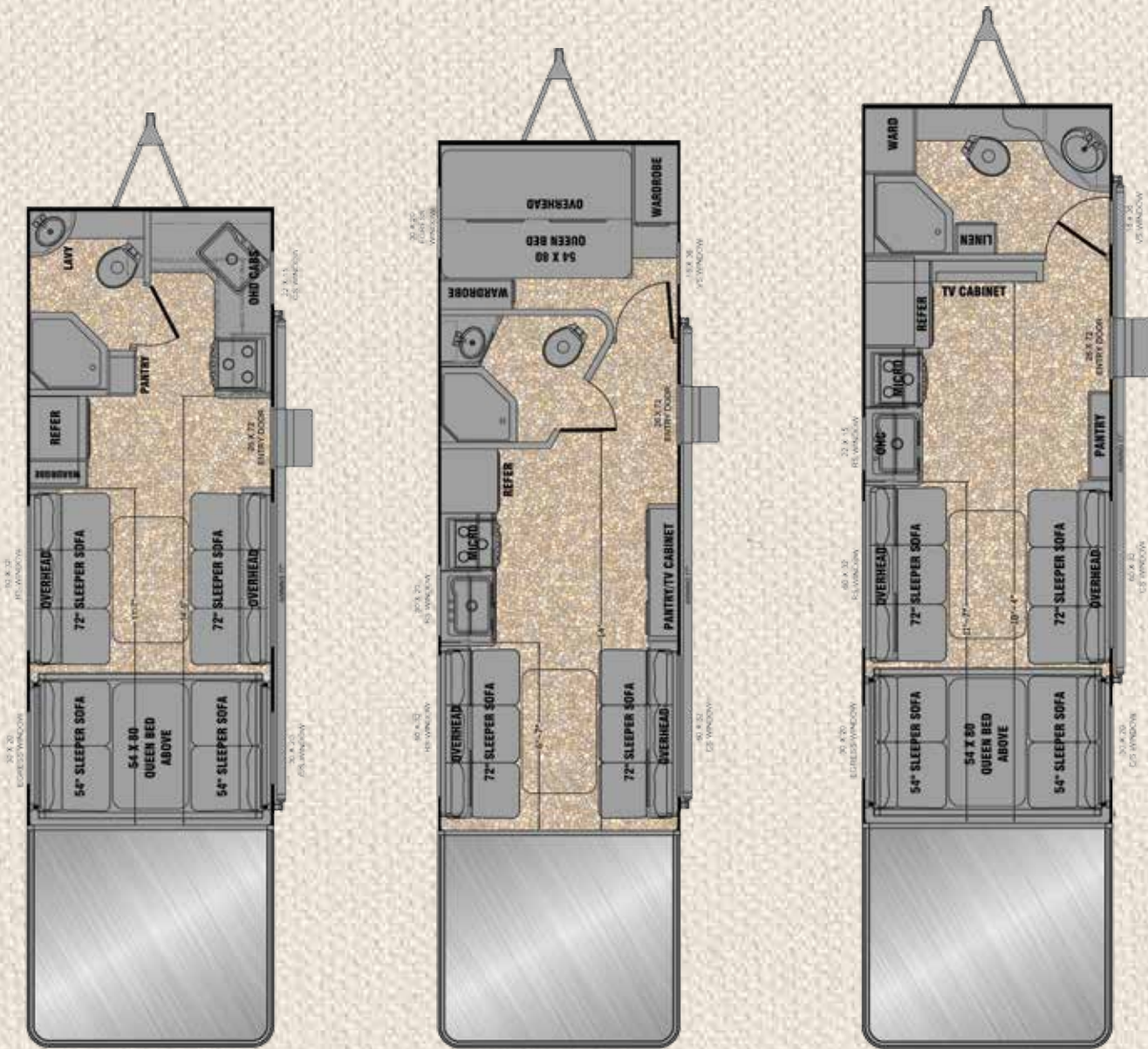
## EXTERIOR OPTIONS

- Power tongue jack
- Power awning

## UTILITY OPTIONS

- CSA
- 15,000 BTU Low Profile AC
- Atwood On-Demand Tankless Hot Water
- Extra Tie Downs
- 40-gallon equipment fuel tank with 4000k generator option

# Choose your floor plan from a wide range



## 19FK

|              |             |
|--------------|-------------|
| Ext Length   | 24' 7"      |
| Ext Width    | 102"        |
| Int Height   | 96"/101"    |
| Cargo R/S    | 11' 7"      |
| Cargo C/S    | 14' 9"      |
| GVWR         | 10,900      |
| Axle Weight  | 4867        |
| Hitch Weight | 708         |
| UVW          | 5575        |
| Payload      | 4445        |
| Fresh Water  | 56 gal      |
| Gray Water   | 41 gal      |
| Black Water  | 41 gal      |
| Fuel Tank    | 18gal/40opt |

## 21SA

|              |             |
|--------------|-------------|
| Ext Length   | 27' 6"      |
| Ext Width    | 102"        |
| Int Height   | 96"/101"    |
| Cargo R/S    | 6' 7"       |
| Cargo C/S    | 14'         |
| GVWR         | 10,900      |
| Axle Weight  | 5153        |
| Hitch Weight | 849         |
| UVW          | 6002        |
| Payload      | 4018        |
| Fresh Water  | 106 gal     |
| Gray Water   | 41 gal      |
| Black Water  | 41 gal      |
| Fuel Tank    | 18gal/40opt |

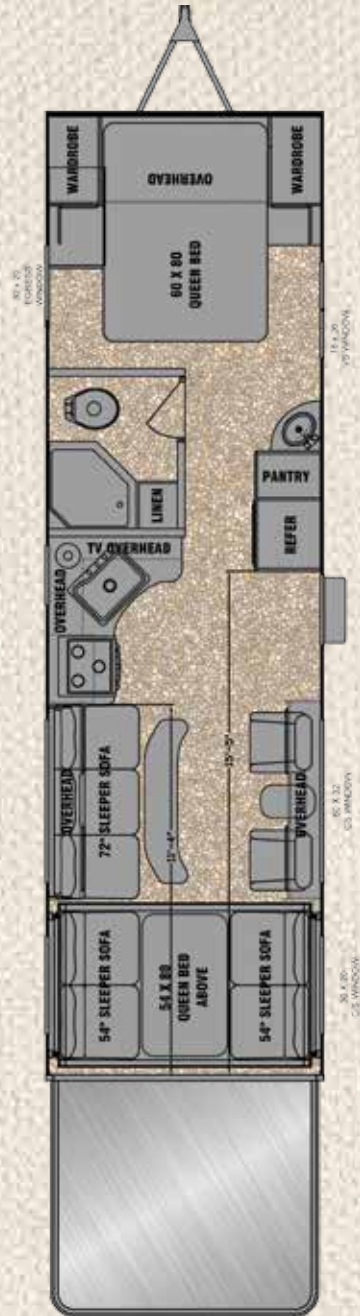
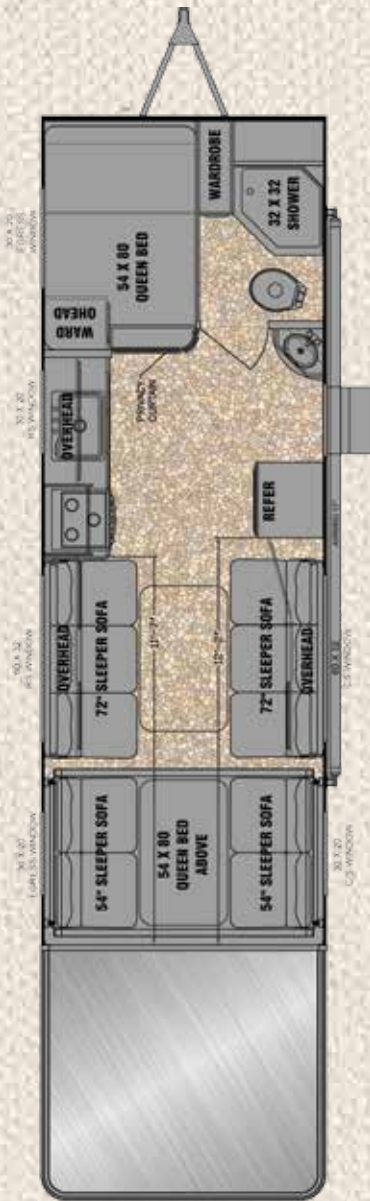
## 23FB

|              |             |
|--------------|-------------|
| Ext Length   | 27' 8"      |
| Ext Width    | 102"        |
| Int Height   | 96"/101"    |
| Cargo R/S    | 11' 7"      |
| Cargo C/S    | 18' 4"      |
| GVWR         | 10,900      |
| Axle Weight  | 5709        |
| Hitch Weight | 889         |
| UVW          | 6598        |
| Payload      | 3422        |
| Fresh Water  | 106 gal     |
| Gray Water   | 41 gal      |
| Black Water  | 41 gal      |
| Fuel Tank    | 18gal/40opt |

\*EverGreen RV reserves the right to change or discontinue at any time, without notice, prices, colors, materials, equipment, accessories, specifications, models, and packages, without incurring any obligations to make the same or similar changes to trailers previously sold. Colors shown may vary due to reproduction and printing processes.



of popular choices.



**23FSB**

|              |             |
|--------------|-------------|
| Ext Length   | 28'         |
| Ext Width    | 102"        |
| Int Height   | 96"/101"    |
| Cargo R/S    | 11' 7"      |
| Cargo C/S    | 12' 2"      |
| GVWR         | 10,900      |
| Axle Weight  | 5452        |
| Hitch Weight | 957         |
| UVW          | 6409        |
| Payload      | 3611        |
| Fresh Water  | 106 gal     |
| Gray Water   | 41 gal      |
| Black Water  | 41 gal      |
| Fuel Tank    | 18gal/40opt |

**24FQS**

|              |             |
|--------------|-------------|
| Ext Length   | 28' 4"      |
| Ext Width    | 102"        |
| Int Height   | 96"/101"    |
| Cargo R/S    | 12' 3"      |
| Cargo C/S    | 12' 3"      |
| GVWR         | 10,900      |
| Axle Weight  | 5428        |
| Hitch Weight | 856         |
| UVW          | 6284        |
| Payload      | 3736        |
| Fresh Water  | 106 gal     |
| Gray Water   | 41 gal      |
| Black Water  | 41 gal      |
| Fuel Tank    | 18gal/40opt |

**27FS**

|              |             |
|--------------|-------------|
| Ext Length   | TBD         |
| Ext Width    | 102"        |
| Int Height   | 96"/101"    |
| Cargo R/S    | TBD         |
| Cargo C/S    | TBD         |
| GVWR         | TBD         |
| Axle Weight  | TBD         |
| Hitch Weight | TBD         |
| UVW          | TBD         |
| Payload      | TBD         |
| Fresh Water  | 106 gal     |
| Gray Water   | 41 gal      |
| Black Water  | 41 gal      |
| Fuel Tank    | 18gal/40opt |

## Check Out Reactor's Features and Benefits

- ✓ 7 ½-foot ramp door makes loading and unloading safe and easy
- ✓ DuraLite Double Welded Aluminum Structure is stronger than screwed frames
- ✓ 100-gallon fresh water tank (on most models) allows for longer trips
- ✓ Barrel ceiling and 101-inch interior height create a spacious open concept
- ✓ 102-inch body design maximizes interior garage and living space
- ✓ Enclosed underbelly with heated tanks protects water tanks and water lines
- ✓ 18-gallon fueling station with pump to conveniently fill toys on long trips
- ✓ Diamond shield protects the trailer from road debris and rock damage
- ✓ 6,000-pound toy locks keep even the heaviest equipment secure on the road
- ✓ EZ lube leaf spring suspension makes for smoother travel off the beaten path

### Compliments of:

See the above dealer for further information and prices.



## The EverGreen Peace of Mind Warranty.

We're so confident in our quality that we're willing to stand behind our travel trailers and fifth-wheels with one of the best warranties in the industry.

- 1-Year Limited Warranty
- 3-Year Limited Structural Warranty\*
- 12-Year Roofing Materials Warranty (except the Ascend)
- 1-Year Free Roadside Assistance Program

\*Contact your EverGreen dealer for an applicable copy of all limited warranties

## Learn more about our full line of quality EverGreen Travel Trailers, Fifth Wheels, Toy Haulers and Motorhomes.



10758 County Road 2 • Middlebury, IN 46540  
Phone: (574) 825-4298 • Fax: (574) 825-4299



[www.GoEverGreenRV.com](http://www.GoEverGreenRV.com)  
[www.LifestyleLRV.com](http://www.LifestyleLRV.com)

