

2015
AMERICAN HERITAGE®



American Coach®
DRIVING YOUR PASSION



DRIVING YOUR PASSION

INTEGRITY. REPUTATION. COMMITMENT.

At American Coach®, these are more than just words. They're the principles upon which we build every motorcoach, every day.



We believe that every luxury motorcoach owner deserves an extraordinary journey, which is why the American Coach story begins long before you step inside or get behind the wheel. It begins with innovative engineering, cutting-edge construction techniques and a meticulous attention to detail. But a beautiful, distinctive design is only the beginning. Through our expert service team and dedicated nationwide dealer network, we've earned an unsurpassed level of customer loyalty.

We're with you at every turn, every time, year after year. Your dreams are limitless, and so is our commitment to every American Coach owner. We're more than a luxury motorcoach manufacturer. We're a partner in the pursuit of your passion.



AMERICAN HERITAGE 45A shown in Jet Set interior décor and Rich Caramel wood cabinetry

American HERITAGE®



THE 2015 AMERICAN HERITAGE

In the 2015 American Heritage, you'll indulge in a gourmet galley and lavish amenities. Everywhere you turn, decadence abounds. Details like glazed hardwood cabinetry, polished porcelain tile and a stone and glass spa shower enclosure catch your eye, beg to be touched and exude rapturous beauty and splendor.





American HERITAGE®

TOP FEATURES

- iPad® Remote Controller
- Aqua-Hot® 600D Heating System
- Bose® Home Theater System
- Silverleaf® Total Coach™ Control System
- Color Matching Exterior Window Graphics
- Powerful 600HP Cummins® ISX15
- Dual Pure Sine Wave Inverters
- Sony® LED TVs
- Roof-Mounted Girard Nova Awnings with LED Lights
- Avionics Entry Door with Pneumatic Air Latches

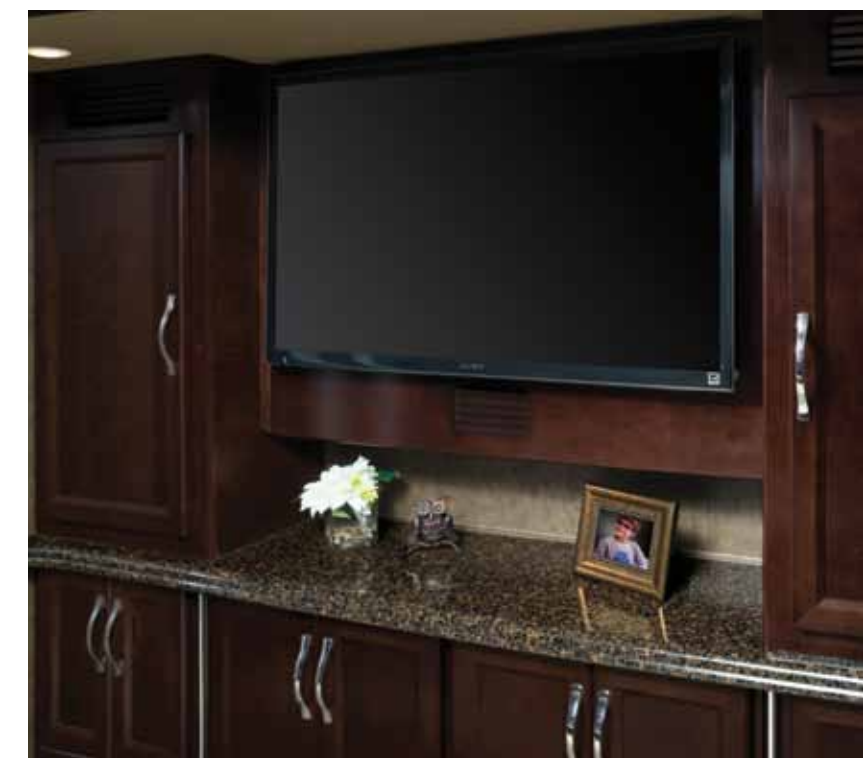




SOPHISTICATION THAT
SPEAKS VOLUMES WITH
AN INVITING WHISPER.



Inside the American Heritage, sophisticated palettes, enticing textures and exhilarating patterns create a stunning interior landscape. From the moment you step inside, it's evident that this is the extravagant reward you deserve for all your hard work.



EXTERIOR / INTERIOR DÉCOR

BLACK CAVIAR



Rich Caramel

JET SET



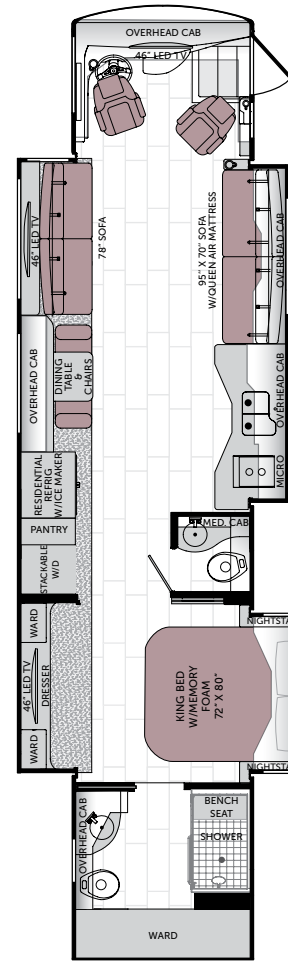
Chestnut

OPEN AIR



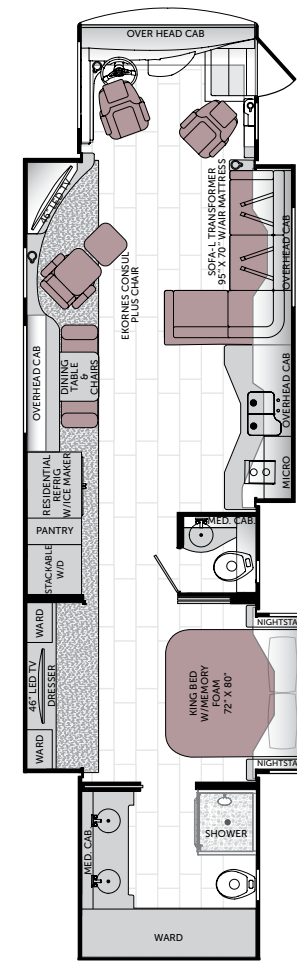
"Build Your Own" at AmericanCoach.com
or with the iPad® app.

FLOOR PLANS



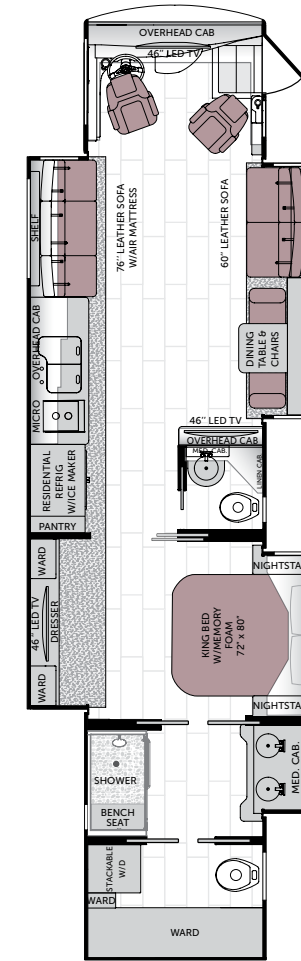
45A

Available options: 091, 107, 126, 129, 856



45N

Available options: 087, 091, 107, 126, 129, 856



45T

Available options: 091, 107, 126, 129, 826, 828, 856

OPTIONS



OPT. 087
FRONT 46\"/>



OPT. 091
EXTERIOR
32\"/>



OPT. 107
DISHWASHER



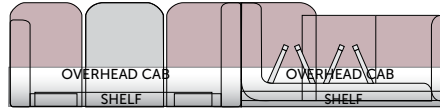
OPT. 126
W/D COMBO



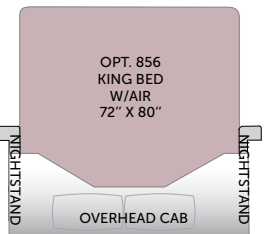
OPT. 129
W/D READY



OPT. 826
DINETTE OVERHEAD CABINETS



OPT. 828
VILLA FACE-TO-FACE
ULTRALEATHER DINETTE ENSEMBLE



OPT. 856
KING BED
W/AIR
72\"/>

¹Interior décors and/or woods may be subject to change.
Printed fabric samples are representations of actual fabrics and may be limited due to standard printing technology.

STANDARD & OPTIONAL FEATURES | INTERIOR



DRIVER CONVENIENCE

- Adjustable Brake & Throttle Pedals
- Auxiliary Fog Lamps
- Auxiliary Start Switch
- Chrome, Heated Side-View Mirrors w/Remote Adjustment & Turn Signal Indicators, Side Vision Cameras Integrated into Mirrors
- Compass & Exterior Temperature Gauge
- Defrost Control System
- Dual-Dash Monitor Design
- Driver & Passenger LED Reading Lights
- Driver Seat & Steering Wheel Position Memory
- Hadley® Air Horns
- Xenon Head Lamps
- Hardwood Dash Cabinetry w/Solid-Surface Top and Storage Drawers
- I.C.C. Light Switch
- Keyless Entry Door Access w/Key Fob
- Low-Profile, Automotive-Style Dash Instrumentation, Backlit Gauges & Switches
- Multiple Auxiliary 12-Volt Dash Receptacles
- One-Piece Windshield Bonded to Steel
- Power Driver Window
- Powered Windshield Privacy Blinds & Shades
- Pressure Pro® Active Tire Pressure Monitoring System
- SGM Dash Climate Control System w/Dual Zone Control
- Silverleaf® Chassis Monitoring System
- Smart Wheel, Leather and Burl Wood Trim, Electronic Tilt-Telescope
- Tag Axle Dump Switch
- Top-Mounted Intermittent Windshield Wiper System w/Wet Arm
- Villa® 8-Way Power Driver Seat w/Heat, Power Lumbar, Adjustable Arms & Massage (Ultraleather)
- Villa 8-Way Power Passenger Seat w/Heat, Power Lumbar, Adjustable Arms, Massage & Electric Footrest (Leather)

Electronics

- Color Camera Monitor w/One-Way Audio
- Sony® Rear-View Camera
- Video Valet w/3 Integrated Cameras
- Xite® Touch Screen Dash Radio w/GPS Navigation & Sirius® Satellite Radio (Subscription Required)

GENERAL AMENITIES

- 30" Deep Slide-Outs (45T)
- Decorative Ceiling Trim
- Hardwood Window Treatments
- Wood-Trimmed Fan-Tastic® Rain Sensor, Power Roof Vents w/3-Speed Fan (3)
- Flush Bolt Latch Hardware on Pocket Doors
- Interior MultiPlex Power Management System
- Lined Cabinet Interiors
- Premium Hardwood Cabinet Doors
- Premium Hardwood Face-Framed Cabinetry & Moldings
- Polished Porcelain Tile Floor
- 12V LED Ceiling & Task Lighting
- Solid-Surface Entry-Step w/ LED Accent Lights & Storage
- Pop-Up Outlet at Dinette Countertop w/USB Outlets
- Aqua-Hot® 60,000 Btu/h Continuous, Tankless Hot Water System

Optional

- Canadian Standards Build
- Custom Interior Request
- Factory V.I.P. Delivery

LIVING AREA

- Central Vacuum System
- Centralized Command Center
- Large Passenger Window
- Lighted Step Well Area w/Power Cover
- Polished Porcelain Tile Floor
- Power Double Roller Shades/Blinds
- Sony 46" LED HDTV Front (45A/45T)
- Sony 46" LED HDTV (Mid-Ship)
- iPad® Controller for Lights, Blinds & A/V
- RVC Multiplex Control System by Silverleaf® w/iPad Interface

Optional

- Sony 46" LED HDTV (45N Front)
- KVH In-Motion Satellite System
- Winegard® In-Motion Satellite System



STANDARD & OPTIONAL FEATURES | INTERIOR



DRIVER CONVENIENCE

- Adjustable Brake & Throttle Pedals
- Auxiliary Fog Lamps
- Auxiliary Start Switch
- Chrome, Heated Side-View Mirrors w/Remote Adjustment & Turn Signal Indicators, Side Vision Cameras Integrated into Mirrors
- Compass & Exterior Temperature Gauge
- Defrost Control System
- Dual-Dash Monitor Design
- Driver & Passenger LED Reading Lights
- Driver Seat & Steering Wheel Position Memory
- Hadley® Air Horns
- Xenon Head Lamps
- Hardwood Dash Cabinetry w/Solid-Surface Top and Storage Drawers
- I.C.C. Light Switch
- Keyless Entry Door Access w/Key Fob
- Low-Profile, Automotive-Style Dash Instrumentation, Backlit Gauges & Switches
- Multiple Auxiliary 12-Volt Dash Receptacles
- One-Piece Windshield Bonded to Steel
- Power Driver Window
- Powered Windshield Privacy Blinds & Shades
- Pressure Pro® Active Tire Pressure Monitoring System
- SGM Dash Climate Control System w/Dual Zone Control
- Silverleaf® Chassis Monitoring System
- Smart Wheel, Leather and Burl Wood Trim, Electronic Tilt-Telescope
- Tag Axle Dump Switch
- Top-Mounted Intermittent Windshield Wiper System w/Wet Arm
- Villa® 8-Way Power Driver Seat w/Heat, Power Lumbar, Adjustable Arms & Massage (Ultraleather)
- Villa 8-Way Power Passenger Seat w/Heat, Power Lumbar, Adjustable Arms, Massage & Electric Footrest (Leather)

Electronics

- Color Camera Monitor w/One-Way Audio
- Sony® Rear-View Camera
- Video Valet
- Multiple Auxiliary 12-Volt Dash Receptacles
- Xite® Touch Screen Dash Radio w/GPS Navigation & Sirius® Satellite Radio (Subscription Required)

GENERAL AMENITIES

- 30" Deep Slide-Outs (45T)
- Decorative Ceiling Trim
- Hardwood Window Treatments
- Wood-Trimmed Fan-Tastic® Rain Sensor, Power Roof Vents w/3-Speed Fan (3)
- Flush Bolt Latch Hardware on Pocket Doors
- Interior MultiPlex Power Management System
- Lined Cabinet Interiors
- Premium Hardwood Cabinet Doors
- Premium Hardwood Face-Framed Cabinetry & Moldings
- Polished Porcelain Tile Floor
- 12V LED Ceiling & Task Lighting
- Solid-Surface Entry-Step w/ LED Accent Lights & Storage
- Pop-Up Outlet at Dinette Countertop w/USB Outlets
- Aqua-Hot® 60,000 Btu/h Continuous, Tankless Hot Water System

Optional

- Canadian Standards Build
- Custom Interior Request
- Factory V.I.P. Delivery

LIVING AREA

- Central Vacuum System
- Centralized Command Center
- Large Passenger Window
- Lighted Step Well Area w/Power Cover
- Polished Porcelain Tile Floor
- Power Double Roller Shades/Blinds
- Sony 46" LED HDTV Front (45A/45T)
- Sony 46" LED HDTV (Mid-Ship)
- iPad® Controller for Lights, Blinds & A/V
- RVC Multiplex Control System by Silverleaf® w/iPad Interface

Electronics

- Sony® Blu-ray® DVD w/Wi-Fi
- Bose® V35 Home Theater System

GALLEY

- Adjustable Shelves
- Countertop Decorative Edge Treatment
- Kalia High-Rise Galley Faucet w/Pullout Sprayer
- Polished Solid-Surface Countertop & Flush Sink Covers w/Convenient Cut Out for Faucet Flow
- Decorative Backsplash
- Roller Bearing Full-Extension Drawer Guides
- Solid Hardwood Drawer Fronts
- Solid-Surface Under-Mount Double-Bowl Sink

Appliances

- Flush-Mount Electric 2-Burner Induction Cooktop
- GE® Advantium® Convection Microwave Oven
- Insta-Hot Hot Water Dispenser
- French Door Refrigerator w/Icemaker In Door

Optional

- Dishwasher Drawer w/Cabinet Wood Front

PLUMBING/ELECTRICAL

- Aqua-Hot® 600D Multi-Zone Hydronic Heating System
- Dual Holding Tank San-T-Flush™ System
- Energy Management System (50 Amp)
- Heat Pump on Rear AC Unit
- Heated Tile Floor
- Heated Water & Holding Tank Compartments
- Inverter & Battery Monitor
- Multi-Point Water Pump Switching
- PEX Plumbing System
- SensaTank™ Level Monitoring System (Interior & Exterior Monitor)
- Surge Guard™ Electrical System Protection
- Three 15.0M Low-Profile Roof Air Conditioners
- Variable-Speed Water Pump
- Waste Management System (Macerator)
- Whole Coach Water Filtration System

BEDROOM

- Exclusive Serenity Series King Mattress w/Signature Memory Foam
- Cedar-Lined Wardrobe
- Full-Length Rear Wardrobe
- Hardwood 6-Panel Doors
- Hardwood Framed Headboard w/Padded Fabric Accent
- Key-Actuated Hidden Safe
- Lift-Up Bed w/Under-Bed Storage
- Overhead Cabinetry Above Bed
- Polished Solid-Surface Counter & Nightstand Tops
- Recessed Bedroom Ceiling Fan
- Remote Generator Start Switch

Electronics

- Sony® 46" LED HDTV
- Sony Blu-ray® DVD Player
- Stacked Washer/Dryer
- Video Valet Bedroom Monitor
- Virtual Window, Security Camera
- Wardrobe Lighting
- Shoe Storage Rear Wardrobe

Optional

- Combination Washer/Dryer
- Washer/Dryer Ready w/Shelves
- King Air Mattress w/2 Remotes

BATHROOM

- Brushed Nickel Finish Bath Accessories
- Clear Glass Shower Enclosure w/Chrome Trim
- Hand-Laid Residential-Style Tiled Shower w/Solid-Surface Accents & Mosaic Tile
- Kalia Residential Fixed & Hand-Held Shower Heads
- LED Floor Lights
- Polished Solid-Surface Countertop & Sink w/Kalia Faucet
- Tecma® Silence Plus 2-Button Porcelain Vacuum Flush Toilets (2)
- Skylight in Shower
- Solid-Surface Shower Caddy
- Double Roller Shades (Manual)

FURNITURE

- Decorative Dinette & Folding Guest Chairs (N/A w/Face-to-Face Dinette Options)
- Dinette w/Deep-Base Cabinet Storage, File Storage & Slide-Out Laptop Tray
- Polished Solid-Surface Dinette Table w/Slide-Out Extension
- Villa® Ultraleather™ Furniture Throughout
- Villa Ultraleather Sofa Bed w/Air Mattress (45A, 45T)
- Villa Ultraleather Sofa w/Removable Arms (45A, 45T)
- Villa Ultraleather Expanding L-Sofa w/Air Mattress (45N)

Optional

- Villa Ultraleather Dinette Face-to-Face Dinette Ensemble (45T)

SAFETY

- 3-Point Integrated Seat Belts at Driver & Passenger Seats
- Carbon Monoxide (CO) Detector
- Emergency Egress Window
- Fire Extinguisher
- Lighted Exterior Grab Handle
- Momentary Courtesy Lighting at Entry & Passenger Area
- Side Docking Lamps
- Side Turn Signal Indicators
- Smoke Detector/Alarm
- Scare Lights

STANDARD & OPTIONAL FEATURES | EXTERIOR

GENERAL AMENITIES

- Air Inflation Hose w/Fittings
- Battery Disconnect Switches for House & Chassis
- Brushed Stainless Kick Plate Under Entry Door
- Brushed Stainless Service Panels
- Convenience Light in Utility Compartment
- Protective Front Mask
- Dual Pure Sine Wave Inverter/Chargers (1-2800w, 2000w)
- Electrical Outlets in Luggage Compartments
- Fresh Water Hose (25')
- Full-Width Rear Rock Guard w/Stainless Logo Panel
- Integrated Rear Upper Fiberglass Wing Deflector
- Keyless Entry Touch Pad/Entry Handle Integrated
- Large Rear Engine Access Door w/Power Assist Struts
- Maintenance-Free (8) Absorbed Glass MDT 6-Volt Batteries (Group GC2)
- Cummins Onan® 12.5 kW Quiet Diesel Generator on Power Slide-Out w/Automatic Start
- "One Key" System (Luggage & Entry Doors)
- Power Cord Reel (50 AMP)
- Power Bus-Style Double Entry Step
- Power Luggage Door Locks (Select Doors) w/Remote Key Fob
- Power Water Hose Reel
- Roof-Mounted Engine Air Intake
- Solar Charging Panel (120w)
- Spray Wand w/Soap Dispenser & Paper Towel Holder
- Strut-Assisted Side-Hinged Luggage Doors
- Windshield Washer 1.5-Gallon Reservoir

Optional

- 1st Full Bay 36"/54" Slide Trays
- 1st Full Bay 90" Slide Tray
- 2nd Full Bay 36"/54" Slide Trays
- 2nd Full Bay 90" Slide Tray
- 1st Full Bay 90" Electric Trays & 2nd Full Bay 90" Electric Tray
- Custom Exterior Paint Color Request
- Exterior Sidewall TV (Sony® 32" LCD HDTV & Sony AM/FM/CD/DVD)
- Ground Effects LED Lighting Package
- Polished Stainless Trim 6"
- Polished Stainless Trim 12"
- Power Cord Remote (Key Fob)
- Two-Piece Aluminum Rear Ladder

CONSTRUCTION

- 5-Layer Flooring w/3" Bead Foam Insulation
- 6-Layer Radius Roof w/Bead Foam Insulation
- Aluminum-Framed Wall Construction
- Central Electrical Panel for 120V/12V AC/DC
- Dense Bead Foam Insulation Throughout
- Axalta™ Automotive Full Body Paint w/Sand & Buff Super Clear High-Gloss Finish
- Fiberglass Front and Rear Quarter Panels
- Fiberglass Molded Front Bumper
- Full Fiberglass Front & Rear Caps
- 1st Full Bay 90" Electric Trays & 2nd Full Bay 90" Electric Tray
- Custom Exterior Paint Color Request
- Exterior Sidewall TV (Sony® 32" LCD HDTV & Sony AM/FM/CD/DVD)
- Ground Effects LED Lighting Package
- Polished Stainless Trim 6"
- Polished Stainless Trim 12"
- Power Cord Remote (Key Fob)
- Two-Piece Aluminum Rear Ladder
- Heated Water and Holding Tank Compartments
- Interlocking Aluminum Roof/Sidewall/Floor Connections
- Insulated Aluminum Framed & Paneled Luggage Compartment Doors
- One-Piece Molded Fiberglass Roof w/Radius Corners & Seamless Transition to Caps
- Pebble-Finished Fiberglass Basement Lining
- Steel Construction on Front Bulkhead
- Sound Absorption Material Front, Rear & Engine
- Vacu-bond® Sidewall, Roof, Floor & Rear Wall

LIBERTY® CHASSIS

- Aluminum Wheels (6)
- Anti-Lock Brake System (ABS)
- Automatic 4-Point Dual (Air & Hydraulic) Leveling System
- Automatic Traction Control
- Custom-Tuned Sachs® Shocks
- Dual Locking Fuel Fill Doors
- Electro-Coated Heavy-Duty Steel Bridge Structure
- Engine Block Heater
- Full Air Brakes w/Automatic Slack Adjusters
- Neway® Air Ride Suspension
- Side Radiator Configuration
- Two 1900 CCA Maintenance-Free Chassis Batteries
- ZF® Independent Front Suspension w/60-Degree Steering Angle

AWNINGS/WINDOWS/DOORS

- 30" Avionics Entry Door w/Deadbolt & Pneumatic Air Latches
- Entry Screen Door w/Logo Kick Plate
- Flush-Mount Windows w/Graphic Overlay
- Girard Window Awnings (Roadside)
- Powered Entry Door Awning
- Roof-Mounted Girard Nova 2-stage Power Awnings (2) w/Wind Sensor System/LED Lights
- Slide-Out Topper Awnings



WEIGHTS & MEASURES

WEIGHTS

CHASSIS — LIBERTY®			
Model	45A	45N	45T
GVWR (lbs) ¹	51,000	51,000	51,000
Front GAWR (lbs) ²	17,000	17,000	17,000
Rear GAWR (lbs) ²	20,000	20,000	20,000
Tag Axle GAWR (lbs) ²	14,000	14,000	14,000
GCWR (lbs) ³	66,000	66,000	66,000
Hitch Rating Weight (lbs) ^{††}	15,000	15,000	15,000
Tongue Weight (lbs) [†]	1,500	1,500	1,500
Fuel Capacity (gal)	150	150	150

CHASSIS – Liberty 600
MODEL: Freightliner® SLM Series
ENGINE: Cummins® ISX15 w/3-Stage Engine Brake
TORQUE: 1,950 lb-ft @ 1,200 RPM
HORSEPOWER: 600 HP
TRANSMISSION: Allison® 4000 MH, 6-Speed w/Electronic Shifter
ALTERNATOR: 270-Amp Leece-Neville
FRONT TIRES: 315/80R 22.5 Michelin® Radial (2)
REAR TIRES: 315/80R 22.5 Michelin Radial (6)

IMPORTANT — PLEASE READ: Product information, photography and illustrations included in this publication were as accurate as possible at the time of printing. For further product information and changes, please visit our website at www.AmericanCoach.com or contact your local American Coach dealer. Prices, materials, design and specifications are subject to change without notice. All weights, fuel, liquid capacities and dimensions are approximate. American Coach has designed its recreational vehicles to provide a variety of uses for its customers. Each vehicle features optimal seating, sleeping, storage and fluid capacities. The user is responsible for selecting the proper combination of loads (i.e., occupants, equipment, fluids, cargo, etc.) to ensure that the vehicle's capacities are not exceeded.

1. GVWR (Gross Vehicle Weight Rating) is the maximum permissible weight of this fully loaded motor home. The GVWR is equal to or greater than the sum of the (UVW) unloaded vehicle weight plus the (OCCC) occupant cargo-carrying capacity*
2. GAWR (Gross Axle Weight Rating) is the maximum permissible loaded weight a specific axle is designed to carry.
3. GCWR (Gross Combined Weight Rating) is the value specified by the motor home manufacturer as the maximum allowable loaded weight of this motor home with its towed vehicle. Towing and braking capacities may be different. Refer to American Coach and chassis manufacturer's manuals for complete information.
4. Length measured from front bumper to rear bumper (excludes accessories).
5. Excludes safety equipment and awnings.
6. Motor homes feature a body width over 96" which will restrict your access to certain roads. Before purchasing, you should research any state and/or province road laws which may affect your usage.
N/A = Not Applicable

† The chassis manufacturer recommends the installation of a supplemental brake control system to activate the brakes on the vehicle or trailer you are towing. Hitch receiver ratings expressed are maximum for the hitch receiver installed and may require the purchase of additional equipment that is dependant on the weight of the towed load. Consult with hitch receiver manufacturer for further information.

DIMENSIONS & CAPACITIES

MODEL	45A	45N	45T
Wheelbase (inches)	302"	302"	302"
Overall Length ⁴	44'-11.5"	44'-11.5"	44'-11.5"
Overall Height (with A/C)	12'-11"	12'-11"	12'-11"
Overall Width (maximum) ^{5, 6}	102"	102"	102"
Interior Height (maximum)	84"	84"	84"
Interior Width (maximum)	96"	96"	96"
Fresh Water Holding Tank (gal)	100	100	100
Grey Water Holding Tank (gal)	60	60	60
Black Water Holding Tank (gal)	40	40	40

THE AMERICAN COACH DIFFERENCE

EXCEPTIONAL DISTINCTION

At American Coach, we believe that your motorcoach is an exuberant declaration of success. That's why we strive every day to provide the best service, the most personal support, the highest-quality materials and the most distinctive designs in the RV industry.

We outfit each coach with state-of-the-art, name-brand technology, sophisticated accessories and engineered components. Our luxury motorcoaches do more than help you make memories—they help you make a statement, no matter where your travels take you.

SUPERIOR INNOVATION

The American Coach manufacturing process incorporates expert engineering, cutting-edge technology and industry-leading construction techniques.

- Vacu-bonded® floors, sidewalls and roof
- Interlocking aluminum construction
- DuPont® ChromaSystem™ full-body exterior paint

TRUSTED SUPPORT

From the first time you step inside your coach—and for many years to come—our service and support team is here to guarantee a smoother, safer, more satisfying ownership experience.

- American Coach Premium Roadside Assistance
- Nationwide network of luxury motorcoach dealers
- Dedicated factory support exclusively for American Coach owners



RELIABLE REPUTATION

In a marketplace full of imitators, the American Coach reputation speaks for itself.

- Industry-leading engineering and construction
- Industry-leading service and support
- Recognition and respect from customers
- Highest resale values
- Most satisfied repeat buyers

WEIGHTS & MEASURES

WEIGHTS

CHASSIS – LIBERTY®		
Model	45A	45N
GVWR (lbs) ¹	51,000	51,000
Front GAWR (lbs) ²	17,000	17,000
Rear GAWR (lbs) ²	20,000	20,000
Tag Axle GAWR (lbs) ²	14,000	14,000
GCWR (lbs) ³	66,000	66,000
Hitch Rating Weight (lbs) ^{††}	15,000	15,000
Tongue Weight (lbs) [†]	1,500	1,500
Fuel Capacity (gal)	150	150

CHASSIS – Liberty 600

MODEL: Freightliner® SLM Series

ENGINE: Cummins® ISX15 w/3-Stage Engine Brake

TORQUE: 1,950 lb-ft @ 1,200 RPM

HORSEPOWER: 600 HP

TRANSMISSION: Allison® 4000 MH, 6-Speed w/Electronic Shifter

ALTERNATOR: 270-Amp Leece-Neville

FRONT TIRES: 315/80R 22.5 Michelin® Radial (2)

REAR TIRES: 315/80R 22.5 Michelin Radial (6)

IMPORTANT – PLEASE READ: Product information, photography and illustrations included in this publication or contact your local American Coach dealer. Prices, materials, design and specifications are subject to change without notice. American Coach is not responsible for any misuse of the vehicle for any purpose other than the intended variety of uses for its customers. Each vehicle features optimal seating, sleeping, storage and fluid capacities. Capacities are not exceeded.

1. GVWR (Gross Vehicle Weight Rating) is the maximum permissible weight of this fully loaded motor home, including the weight of the motor home, to or greater than the sum of the (UVW) unloaded vehicle weight plus the (OCCC) occupant cargo-carrying capacity.
 2. GAWR (Gross Axle Weight Rating) is the maximum permissible loaded weight a specific axle is designed to carry.
 3. GCWR (Gross Combined Weight Rating) is the value specified by the motor home manufacturer as the maximum weight of this motor home with its towed vehicle. Towing and braking capacities may be different. Consult the American Coach and chassis manufacturer's manuals for complete information.
 4. Length measured from front bumper to rear bumper (excludes accessories).
 5. Excludes safety equipment and awnings.
 6. Motor homes feature a body width over 96" which will restrict your access to certain roads. Before purchase, please research any state and/or province road laws which may affect your usage.
- N/A = Not Applicable

[†] The chassis manufacturer recommends the installation of a supplemental brake control system to activate the vehicle or trailer you are towing. Hitch receiver ratings expressed are maximum for the hitch receiver if used with the proper equipment. Hitch receiver ratings expressed are maximum for the hitch receiver if used with the proper equipment. Consult manufacturer for further information.

American
HERITAGE®

THE AMERICAN COACH DIFFERENCE



American Coach has partnered with Freightliner Custom Chassis Corporation (FCCC) to provide an integrated engineering chassis solution for the exclusive Liberty® Chassis design—durable and dependable with an impressive warranty and the smoothest ride in the industry.

SUPERIOR INNOVATION

The American Coach manufacturing process incorporates expert engineering, cutting-edge technology and industry-leading construction techniques.

- Vacu-bonded® floors, sidewalls and roof
- Interlocking aluminum construction
- DuPont® ChromaSystem™ full-body exterior paint

TRUSTED SUPPORT

From the first time you step inside your coach—and for many years to come—our service and support team is here to guarantee a smoother, safer, more satisfying ownership experience.

- American Coach Premium Roadside Assistance
- Nationwide network of luxury motorcoach dealers
- Dedicated factory support exclusively for American Coach owners



American Coach

DRIVING YOUR PASSION

RELIABLE REPUTATION

In a marketplace full of imitators, the American Coach reputation speaks for itself.

- Industry-leading engineering and construction
- Industry-leading service and support
- Recognition and respect from customers
- Highest resale values
- Most satisfied repeat buyers

Visit *AmericanCoach.com* and look for American Coach iPad® apps available through iTunes.



ALLIED RECREATION GROUP

2015 AMERICAN REVOLUTION 2015 AMERICAN TRADITION 2015 AMERICAN EAGLE 2015 AMERICAN HERITAGE

American Coach Customer Care, P.O. Box 31, Decatur, IN 46733.

© 2014. Allied Recreation Group, Inc. Printed in the USA. Inventory Control Number AH15B1, 06/14. Model Year 2015, First Edition.