

# CATALINA

## DESTINATION



**CATALINA**  
DESTINATION



# 39FKTS

*The 39FKTS is the perfect family destination unit. With spacious sleeping areas and a large living room, you are sure to have a great time relaxing!*



*39FKTS with Truffle decor*



*39FKTS Bedroom  
(TV not included)*



*39FKTS Bunk room*



*Large bathroom with abundant storage*



# 39MKTS

The Catalina 39MKTS is a triple slide couples camper. It has opposing slides in the living area and kitchen to give you even more space! This is your future home away from home.



39MKTS with Camel decor



39MKTS bathroom featuring glass shower doors and seat



39MKTS Bedroom  
(TV not included)



# 40BHTS

For the full family outdoor experience, look no further than the 40BHTS. With the optional camp kitchen, tons of sleeping, and spacious interior, your family will have everything it needs to enjoy the outdoors. For time spent inside while camping the 40BHTS leaves nothing to be desired. Featuring a full entertainment center in the living area complete with electric fireplace. The spacious master bedroom also features a standard electric fireplace.



40BHTS with Truffle decor



40BHTS Optional exterior camp kitchen

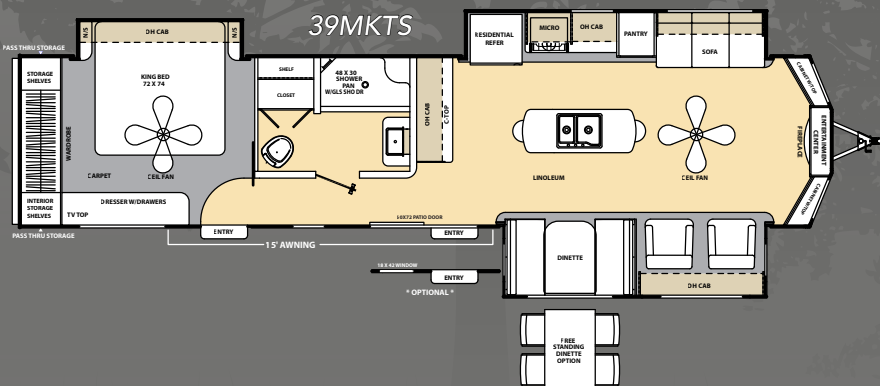
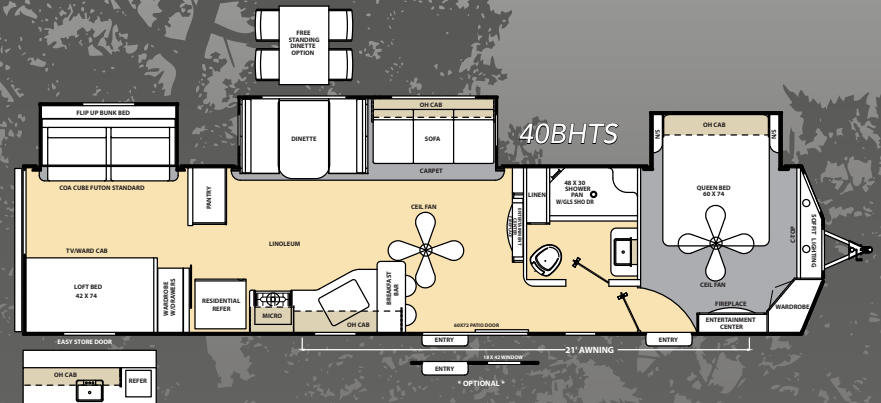
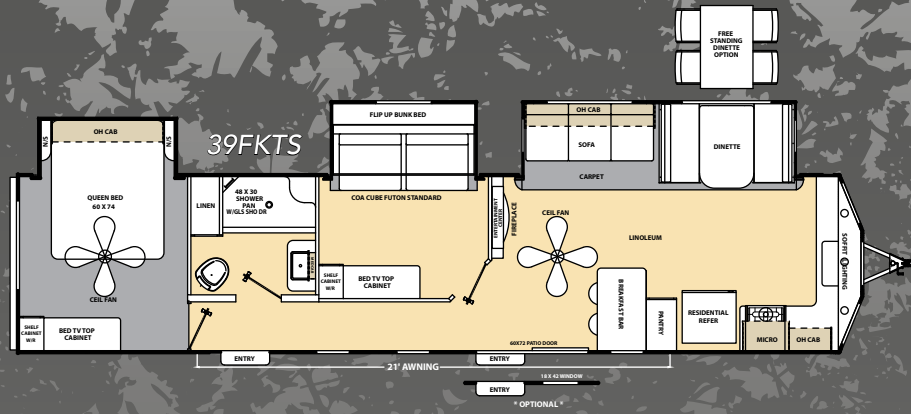
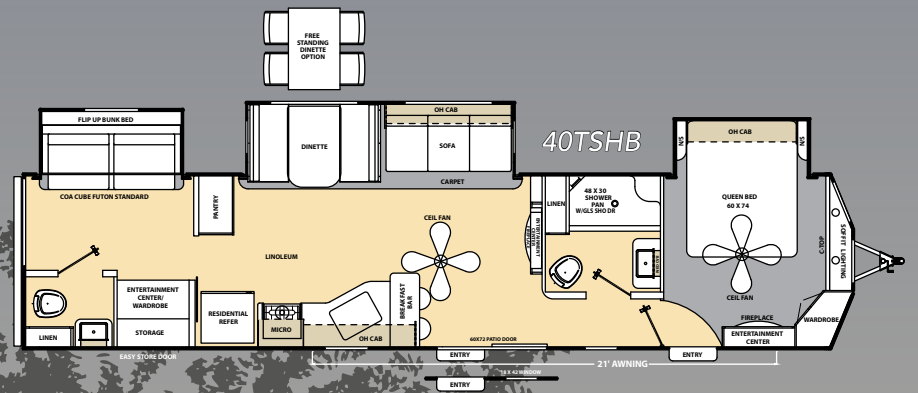
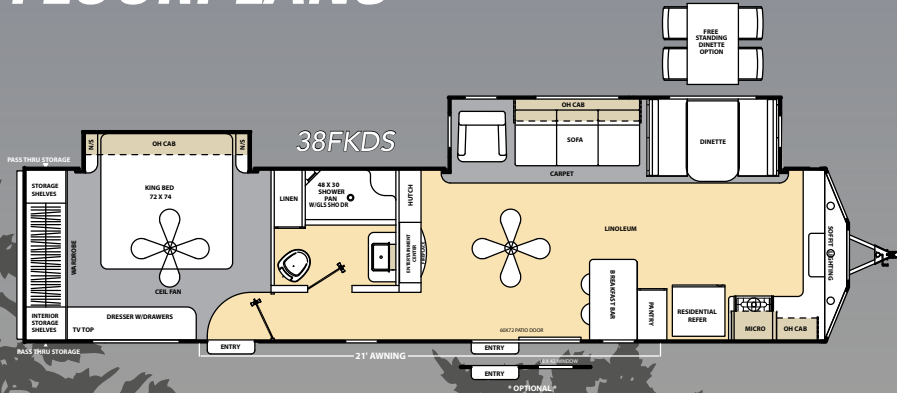


40BHTS Bunk room (TV not included)



40BHTS Bedroom (TV not included)

# FLOORPLANS



## SPECIFICATIONS

MODEL	38FKDS	39FKTS	39MKTS	40BHTS	40TSHB
Shipping Weight	8,990	9,480	9,350	9,610	9,680
Carrying Capacity	2,510	2,020	2,150	1,890	1,820
GVWR	11,500	11,500	11,500	11,500	11,500
Hitch Weight	1,210	1,110	1,330	1,130	1,190
Exterior Height (Includes A/C)	11' 8"	11' 8"	11' 8"	11' 8"	11' 8"
Fresh Water Capacity (gal.)	46	46	46	46	46
Grey Water Capacity (gal.)	80	80	80	80 ***	80
Waste Water Capacity (gal.)	40	40	40	40	70
Awning Length	21'	21'	15'	21'	21'
Wheel Size	15"	15"	15"	15"	15"
Exterior Length	40' 9"	40' 9"	40' 9"	40' 9"	40' 9"
Exterior Width	96"	96"	96"	96"	96"
Interior Height (Coach)	84"	84"	84"	84"	84"
Axles	5200 lbs.	5200 lbs.	5200 lbs.	5200 lbs.	5200 lbs.

\*\*\*110 with Camp Kitchen



# STANDARD AND OPTIONAL FEATURES

## Exterior Standard Features

- Cambered structural steel I-beam frame
- 3/8" Fully decked walk-on roof
- 2" X 3" longitudinal floor joists on approximately 12" centers
- Residential in-floor ducted heat
- 84" Ceiling height destination trailers
- One-piece, seamless, rubber roof material with 12 year warranty
- Electric slide out(s)
- Wall studs on 16" centers
- 1/2" Plywood dinette, bed and bunk platforms
- Roof rafters, constructed of residential-style tapered 5" trusses
- 5/8" Tongue & groove plywood floor decking
- R-7 fiberglass insulation in sidewall, roof & floor
- .024" Aluminum exterior skin with .030 Skirt metal
- Dark tinted (G-20) black framed windows w/safety glass
- Swing arm entry assist handle at main entry
- Radius entry steps
- 5200 Lb. Superlube™ easy maintenance axles
- Silver maintenance free e-coat wheels
- Painted bumper w/drain hose carrier and end caps
- Radius-cornered fiberglass entrance door
- Painted bottom radius skirting
- Amber patio light w/inside switch
- Baggage doors are lockable and radius-cornered
- Grab handle at second entry (per floorplan)
- Rain guttering, molded w/drip spouts
- Polished aluminum fender skirts
- Large bay front windows
- Manual awning

## Interior Standard Features

- Grace Cherry interior wood
- Jack knife convertible sofa with bolster cushions
- Residential furniture
- Tile look linoleum flooring
- Digital TV antenna with signal booster
- Cable hook-up with RG-6 coax cabling
- Valance & lambrequin window treatments

- Solid doors throughout all units
- Large dinette tabletop
- Satellite hook up for TV (living room only)
- Night shades in living area
- Solid thermofoil countertop
- Fireplace entertainment center (std. on every floorplan)
- Residential sized stainless steel residential refrigerator
- 3-Burner stainless steel range w/ 9,000 BTU superburner™
- Stainless Steel range hood w/light and exhaust fan
- Stainless Steel microwave oven
- Convenient breakfast bar in all models
- Kitchen drawers with full extension metal ball bearing drawer guides
- Easy-view extra large picture window at dinette
- Large pedestal dinette table
- Residential style lighting above dinette w/ wall sconces
- Silverware drawer
- Under-bed storage, bed lifts easily on gas struts
- Designer decorative headboard
- Skylight above bath and shower
- Marine toilet with foot flush
- Large sink in bathroom
- Medicine cabinet w/ mirror
- Bathroom exhaust fan

## Standard Heat, Water and Power Equipment

- Roto-cast holding tanks
- 35K BTU auto-ignition furnace with wall thermostat
- 110V G.F.C.I. Protected exterior receptacle
- 50-Amp electric service
- 12V demand water pump
- Systems monitor panel
- Hook-up for city water
- Two 30 Lb. LP tanks with auto switchover regulator and ABS cover
- Water heater by-pass winterization kit

## Customer Value Package (Mandatory Option)

- 13.5K BTU ducted A/C
- Heated-enclosed underbelly
- 10-Gal. electronic ignition (DSI) gas/electric water heater
- Serta® Sleep System mattress
- Decorative wall border in the kitchen
- Multi-Media DVD/CD Radio w/ USB input jack
- Winegard TV antenna w/ cable interior/exterior hook-ups
- Two 30 Lb. LP tanks with auto switchover regulator and ABS cover
- Outside shower
- Fiberglass shower with a sliding door
- Gas oven
- Sink covers/cutting boards combination (2)
- Stabilizer jacks (4)
- Mounted telescoping TV swing arm bracket
- Bedroom and Living room ceiling fans with wall switch

## Additional Options

- 15K BTU ducted A/C
- Second 13.5K BTU A/C
- Power electric awning with wall mounted LED lights
- Spare tire w/ carrier & cover
- Full size exterior camp kitchen (40BHTS only)
- Hide-a-bed sofa
- Detachable hitch
- Bar stools (2)
- Free standing dinette w/ extension and chairs
- Outside marine-grade speakers



**Coachmen**  
Leader to the Great Outdoors.

## SUPERIOR STANDARDS



32" Flatscreen LED HDTV



Fireplace Entertainment Center  
Included on ALL Floorplans



Designer Bedroom with Quilted  
Bedspread, Pillow Shams, Serta  
Mattress and Custom Headboard



Solid thermofoil countertop



Pleated Night Shades



Skylight Above  
Tub/Shower



Metal Drawer Guides



Real Wood, Screwed Cabinet  
Fascia with Lumber Core Stiles,  
NOT Stapled Particle Board  
Like Most Brands.

# CATALINA DESTINATION



## CUSTOMER VALUE PACKAGE



Stainless Steel  
Appliance Package



Dual Sink Covers/Cutting  
Board Combination



Kitchen Wall Border



Two (2) Ceiling Fans  
(Bedroom and Living Area)



Serta® Sleep System  
Mattress



Fiberglass shower with a  
sliding door



Swing Arm TV Bracket



Multimedia DVD/CD Radio  
with USB Input



Four (4) Stabilizer Jacks



Exterior Shower with  
Head Mount



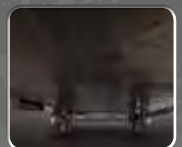
10 Gal. DSI Gas/Electric  
Water Heater



Two (2) 30 Lbs. LP Tanks w/  
ABS Tank Cover



Antenna with Interior and  
Exterior Hook-Ups



Heated and Enclosed  
Underbelly





# FREE ONE YEAR MEMBERSHIP

## Big benefits for new owners

Coachmen is proud to sponsor the largest manufacturer sponsored camping club in North America ... Coachmen Owners' Association (COA). COA provides a broad breadth of value propositions for our owners including: planned trips/ tours and rallies at bulk rate discounts, free trip routing, free campground directory, free Easy RVing magazine, theme park discounts, fuel discounts, mail forwarding, a dedicated COA web site, local and state club activities and Caravan Chapter membership opportunities. Most importantly, COA enhances the Coachmen ownership and RV lifestyle experience. Every new Coachmen RV buyer is eligible for a 1 Year **FREE** membership in the Coachmen Owners' Association. It all adds up to an easy ownership experience!

## Travel Easy™ Roadside Assistance

RVing is easier with Coachmen's Travel Easy™ Roadside Assistance provided **FREE** the first year of ownership to those who purchase a New Coachmen RV. Administered by Coach-Net, this service provides you with 24/7 operational, technical and emergency road service coverage. Also included is towing, fuel delivery, jump starts, lockout service, tire changes, mobile mechanic and unlimited technical assistance. Anywhere. Anytime. Travel Easy™ is the security of knowing that help is an easy phone call away.



All information contained in this brochure is believed to be accurate at the time of publication. However, during the model year, it may be necessary to make revisions and Coachmen reserves the right to make all such changes without notice, including prices, colors, materials, equipment and specifications as well as the addition of new models and the discontinuance of models shown in this brochure. Therefore, please consult with your Coachmen dealer and confirm the existence of any materials, design or specifications that are material to your purchase decision.

To learn more about Coachmen RV and our products and see how Coachmen is leading the great outdoors, visit [www.coachmenrv.com](http://www.coachmenrv.com)



# Coachmen

Leader to the Great Outdoors.

Coachmen RV  
Catalina Division  
423 N. Main St./P.O. Box 30  
Middlebury, IN 46540



### Learn More

Scan this barcode using a QR Reader on your smart phone to learn more about Forest River.



A Berkshire Hathaway company.



Forest River, Inc. encourages our customers to purchase their Forest River products from a local dealership whenever possible for the following reasons:

It is the goal of Forest River, Inc. that all of our RV owners fully enjoy the RV experience and that customer satisfaction meets or exceeds their expectations!

- 1) Forest River, Inc. dealers are independently owned and operated businesses so priority service and scheduling is at their discretion and is often provided to customers that purchased their unit at that dealership.
- 2) Purchasing locally allows customers to establish meaningful relationships with a dealer, enhancing the RV experience through assistance with product questions, user tips or RV regulations for your state or country, and much more!
- 3) Canadian customers must meet requirements to bring an RV purchased out of the country to their home. These requirements may involve additional inspections and certifications, taxes and fees. Your local Canadian Dealer is a professional at meeting these requirements.
- 4) Scheduling timely warranty repairs and adjustments through a local dealership provides far greater flexibility and convenience to you, the customer!

## YOUR CATALINA DEALER

