



VACATIONER

HOLIDAY RAMBLER®

2015 HOLIDAY RAMBLER | CLASS A GAS

TOP FEATURES

- 39" LED TV
- LED Lighting
- Hardwood Cabinet Doors/Drawers
- One-Piece Panoramic Windshield
- Full Body Paint
- Side-Swing Luggage Doors
- 22.5" Aluminum Wheels
- Pass-Through Basement Storage
- 4-Point Auto Hydraulic Leveling Jacks
- Seamless Sidewall Transitions
- Sideview Cameras
- Dual-Pane Windows



CAPPUCCINO



GATEWAY GRAY



WATERFORD II

WEIGHTS & MEASUREMENTS

MODELS	36DBT	36SBT
Wheelbase (inches)	242"	228"
GVWR (lbs) ¹	22,000	22,000
Front GAWR (lbs) ²	8,000	8,000
Rear GAWR (lbs) ²	15,000	15,000
GCWR (lbs) ³	26,000	26,000
Hitch Rating Weight (lbs) ^{†, ††}	5,000	5,000
Tongue Weight (lbs) [†]	500	500
Fuel Capacity (gal)	80	80

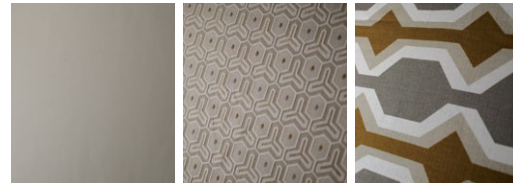
FORD® CHASSIS

Model: Ford® Chassis	Alternator: 130 Amp
Engine: 6.8L Triton V10	Torque: 457 lb-ft @ 3,250 RPM
Transmission: 5-Speed, Automatic w/Overdrive	Horsepower: 362HP

DIMENSIONS & CAPACITIES

MODELS	36DBT	36SBT
Overall Length ⁴	37' 6"	36' 3"
Overall Height (with A/C)	12' 10"	12' 10"
Overall Width (maximum) ^{5, 6}	102"	102"
Interior Height (maximum)	84"	84"
Interior Width (maximum)	96"	96"
Patio Awning Width	18'	20'
Interior Storage (cu. ft.)	135	114
Exterior Storage (cu.ft.)	148	152
Fresh Water Holding Tank (gal)	85	85
Grey Water Holding Tank (gal)	58	58
Black Water Holding Tank (gal)	42	42
Appliance Propane Tank (gal) (WC) ⁷	25	25
Water Heater Tank (gal)	10	10

GATEWAY GRAY



SOFA

ACCENT

BEDSPREAD



COUNTERTOP

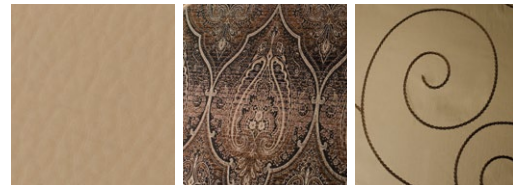
FLOORING

CARPET

GLAZED HILLSIDE CHERRY



WATERFORD II



SOFA

ACCENT

BEDSPREAD



COUNTERTOP

FLOORING

CARPET

GLAZED FULTON CHERRY





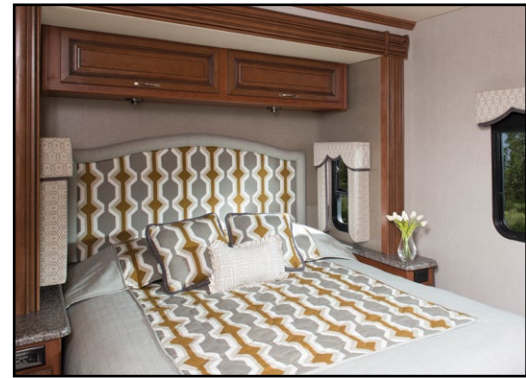
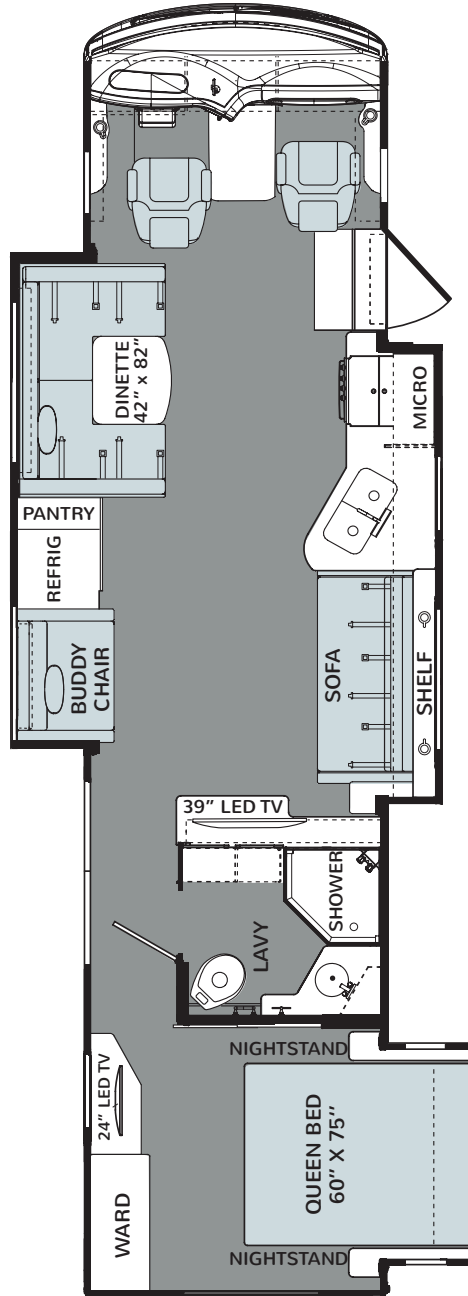
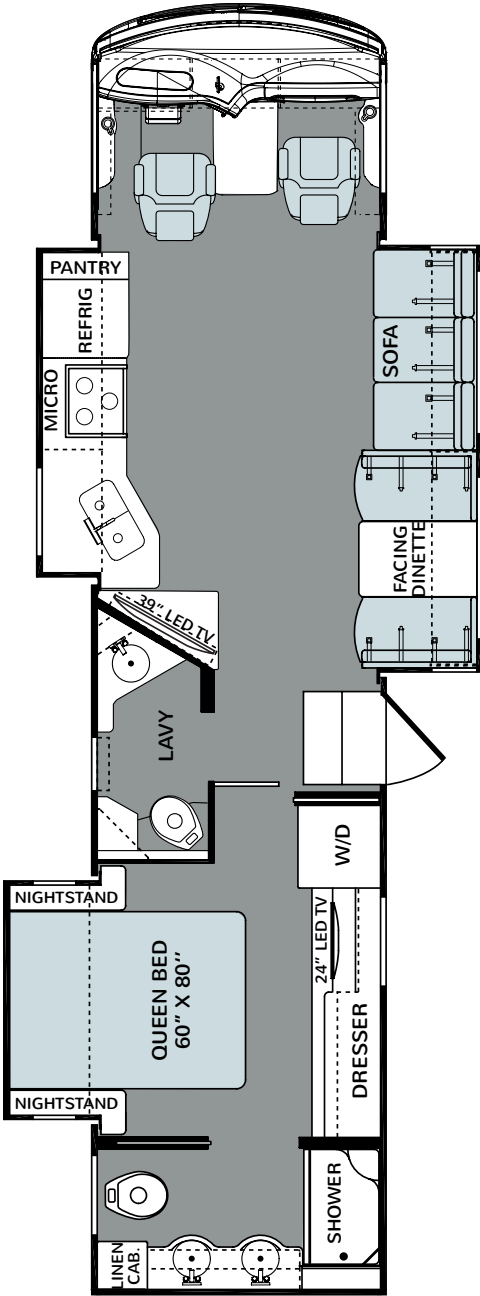
VACATIONER

HOLIDAY RAMBLER

2015 HOLIDAY RAMBLER | CLASS A GAS

36DBT

36SBT



Addendums

1. GVWR (Gross Vehicle Weight Rating) is the maximum permissible weight of this fully loaded motorhome. The GVWR is equal to or greater than the sum of the (UVW) unloaded vehicle weight plus the (OCCC) occupant cargo-carrying capacity*.
2. GAWR (Gross Axle Weight Rating) is the maximum permissible loaded weight a specific axle is designed to carry.
3. GCWR (Gross Combined Weight Rating) is the value specified by the motorhome manufacturer as the maximum allowable loaded weight of this motorhome with its towed vehicle. Towing and braking capacities may be different. Refer to Fleetwood and chassis manufacturer's manuals for complete information.
4. Length measured from front bumper to rear bumper (excludes accessories).
5. Excludes safety equipment and awnings.
6. Motorhomes feature a body width over 96" which will restrict your access to certain roads. Before purchasing, you should research any state and/or province road laws which may affect your usage.
7. Tank manufacturer's listed water capacity (WC). Actual propane capacity is 80% of water listing as required by the safety code.

† The chassis manufacturer recommends the installation of a supplemental brake control system to activate the brakes on the vehicle or trailer you are towing. Hitch receiver ratings expressed are maximum for the hitch receiver installed and may require the purchase of additional equipment that is dependent on the weight of the towed load. Consult with hitch receiver manufacturer for further information.

* UVW and OCCC are found on the label containing the federal certification tag in each RV.

†† The Minimum Towable Load of this vehicle is the available weight capacity, up to GCWR, when the coach is fully loaded to maximum GVWR. However, if the coach is loaded to something less than maximum GVWR, that extra available weight capacity can be added to your Towable Load. For example, if your coach is loaded to 1000lbs less than maximum GVWR, your Towable Load increases accordingly. Do not exceed the hitch rating weight, GVWR or GCWR.

IMPORTANT—PLEASE READ

Product information, photography and illustrations included in this publication were as accurate as possible at the time of printing. For further product information and changes, please visit our website at www.holidayrambler.com or contact your local Holiday Rambler dealer. Prices, materials, design and specifications are subject to change without notice. All weights, fuel, liquid capacities and dimensions are approximate. Holiday Rambler has designed its recreational vehicles to provide a variety of uses for customers. Each vehicle features optimal seating, sleeping, storage and fluid capacities. The user is responsible for selecting the proper combination of loads (i.e., occupants, equipment, fluids, cargo, etc.) to ensure that the vehicle's capacities are not exceeded.

CONTACT US

To locate a dealer near you, visit our website at www.holidayrambler.com or call 1-877-252-4666. We can also be contacted at Holiday Rambler Customer Relations, P.O. Box 1007, Decatur, IN 46733.

ALLIED RECREATION GROUP



©2014 Allied Recreation Group, Inc. Printed in USA.
Inventory Control Number VAC 15F2, 05/14. Model Year
2015, Second Edition.