



# 170 Versatile

# 170 Versatile



<b>Travel Capacity</b>	Six
<b>Sleeping Capacity</b>	Four
<b>Dining</b>	Front & rear
<b>Engine</b>	4.8 L SFI gas V8
<b>Batteries</b>	One 12 V AGM, 1,200 W
<b>Water Heater</b>	Propane with bypass, 23 L/6 U.S. gal., 12,000 BTU
<b>Water Capacity</b>	
<b>Fresh</b>	75 L/20 U.S. gal.
<b>Black</b>	30 L/8 U.S. gal.
<b>Gray</b>	85 L/23 U.S. gal.
<b>Tow Weight</b>	5,400 lbs. (2,450 kg)
<b>Tongue Weight</b>	1,000 lbs. (450 kg)
<b>RV Warranty</b>	5 year unlimited mileage/ km, RV limited warranty covering the manufacture of the motorhome only (excludes chassis)

## Interior Color Options

### Cabinetry



Cherry

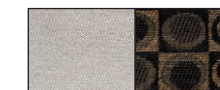


Ebony



Bamboo

### Main & Accent Fabric



Tan

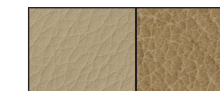


Onyx

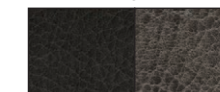


Platinum

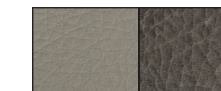
### Leather Seating



Tan



Onyx



Platinum

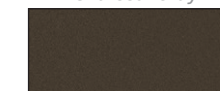
### Exterior Paint Options



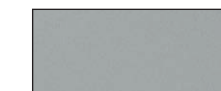
White



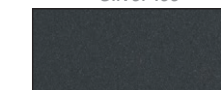
Charcoal Gray



Brownstone Metallic



Silver Ice



Gray Metallic\*

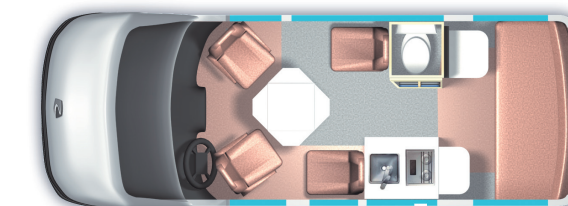
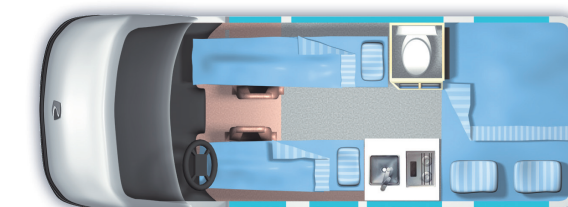
## The freedom to travel often

Named for its ability to change right along with its passenger's needs, the 170 Versatile combines convenience, comfort, efficiency and value all in one stylish package. Ideal for an active family heading to a sporting event or a couple looking to get away from it all, the 170 Versatile offers you all the amenities of a larger motorhome with the added benefit of driveability, parking ease and fuel efficiency. With seating for up to six, sleeping up to four and tons of storage space, the 170 Versatile is the perfect combination of functionality and style.



## Features

- Galley features 3.0 cu. ft. refrigerator, two burner recessed stove and extensive storage
- Power sofa easily converts to a comfortable double bed
- Optional permanent cabinet for extra hanging or shelf space
- Separate eating and sleeping areas



# 170 Versatile

## Specifications

Exterior length	18' 9" (5,720 mm)
Exterior width (without mirrors)	6' 7" (2,007 mm)
Interior aisle width	30" (760 mm)
Exterior height	8' 9" (2,660 mm)
Interior standing height	6' 1" (1,855 mm)
Wheelbase	135" (3,430 mm)
Gross vehicle weight rating	8,600 lbs. (3,900 kg)
Occupant & cargo carrying capacity*	1,250 lbs. (500 kg)
Gross combined weight rating*	13,000 lbs. (5,897 kg)
Towing – tow weight*	5,400 lbs. (2,450 kg)
Towing – tongue weight*	1,000 lbs. (450 kg)
Fuel type	Gas
Fresh water capacity	75 L/20 U.S. gal.
Black holding tank capacity	30 L/8 U.S. gal.
Gray holding tank capacity	85 L/23 U.S. gal.
Storage capacity (with options)	930 L/33 cu. ft. (1,400 L/49 cu. ft.)
Rear double bed sleeping maximum (width x length)	50" x 73" (1,260 mm x 1,855 mm)
Front single bed - Left (width x length)	22" x 58" (560 mm x 1,470 mm)
Front single bed - Right (width x length)	22" x 74" (560 mm x 1,880 mm)

\* Refer to [www.roadtrek.com](http://www.roadtrek.com) for more details.

## RV Warranty

5 year unlimited mileage/km, RV limited warranty covering the manufacture of the motorhome only (excludes chassis).

## Chassis Warranty

3 year/36,000 mile or 60,000 km limited "bumper to bumper" warranty and 5 year/100,000 mile or 160,000 km limited powertrain warranty as offered by General Motors. Refer to chassis manufacturers' website for details.

Roadtrek Motorhomes Inc. reserves the right to make changes at any time, without notice, in colors, materials, equipment, specifications and models. This information is intended as a guide only; please visit [www.roadtrek.com](http://www.roadtrek.com) for a complete list of specifications and options. Some motorhomes may be shown with equipment that is optional. Accessories shown in the photography are not included.

## Coach Features

	Standard	Optional
Air conditioner – 110 V, 10,200 BTU	X	
Armoire – interchangeable with right lounge seat		X
Awning – 9' 10" (3,000 mm) power awning	X	
Bathroom – temporarily enclosed with bifold door	X	
Batteries – one 12 V AGM, 1,200 W	X	
Cabinet – permanently replaces driver side lounge seat		X
Connection – external – 110 V	X	
Detectors – smoke, propane & CO	X	
Furnace – propane automatic, 16,000 BTU	X	
Generator – conventional – gasoline with remote-start, 2.8 kW		X
Generator – under-hood		X
Generator/alternator – engine mounted 12 V 3,500 W		X
Home theater system with 5.1 surround sound & dual center speakers with DVD, CD, AM/FM radio, dual use rear speakers	X	
Mattress – single folding for 1 <sup>st</sup> & 2 <sup>nd</sup> row seats		X
Microwave oven – 110 V, 20 L/0.7 cu. ft., 700 W	X	
Monitor panel – water, propane & battery charge levels, battery disconnect & generator hour meter	X	
Power converter with charger – 110/12 V, 3-step 45 AMP charger	X	
Power inverter – 12/110 V, 750 W	X	
Propane tank – 38 L/10 U.S. gal., 45 lbs.	X	
Rear power sofa – fabric	X	
Rear power sofa – faux leather		X
Refrigerator – 12 V/110 V propane, 3.0 cu. ft. with auto source selection	X	
Seats – passenger side 2 <sup>nd</sup> row captain seat		X
Screen package – side door windows, side door & rear door		X
Sewage disposal system – 12 V macerator sewage pump	X	
Solar charging system - daylight - 200 W with charge controller		X
Storage compartments (exterior) – one below floor	X	
Stove – propane; two burner recessed with flush cover	X	
TV – 22" HD flat screen on rotating bracket with remote		X
Water heater – propane with bypass, 23 L/6 U.S. gal., 12,000 BTU	X	
Water system – on demand 12 V with water pump	X	

## Chassis Features

	Standard	Optional
Airbag – driver & passenger (with passenger on/off switch)	X	
Alternator – 145 AMP	X	
Axle – rear – 3.42 ratio	X	
Battery – 600 AMP	X	
Brakes – anti-lock (ABS), four wheel disc	X	
Camera – rearview backup	X	
Climate control	X	
Continental spare tire carrier		X
Cooling – transmission oil – external	X	
Cruise control	X	
Engine – 4.8 L SFI gas V8	X	
Fender flares		X
Headlights – automatic on/off	X	
Mirrors (exterior) – power, heated with convex OnStar®	X	X
Power – 213 kW/285 HP	X	
Radio – audio system with navigation, AM/FM stereo with MP3 compatible CD/DVD player & navigation, USB port, seek-and-scan, digital clock, auto-tone control, Radio Data System (RDS), speed-compensated volume & TheftLock®	X	
Receiver – Class IV		X
Stability program	X	
Theft deterrent system	X	
Tilt steering	X	
Tire storage – rear storage area	X	
Tires – LT245/75R16E black wall	X	
Torque – 398 Nm/295 lb.-ft.	X	
Transmission – automatic 6-speed heavy duty	X	
Wheels – 16" aluminum polished with steel spare		X
Window operation – power; front doors only	X	
Wiring harness for towing – 4-way & 7-way connector	X	

## Find Your Roadtrek



[www.roadtrek.com](http://www.roadtrek.com)

## Connect With Us



[facebook.com/roadtrek](https://facebook.com/roadtrek)



[twitter.com/roadtrekmh](https://twitter.com/roadtrekmh)



[youtube.com/roadtrekmotorhomes](https://youtube.com/roadtrekmotorhomes)



Your destination awaits

Roadtrek Motorhomes Inc. 100 Shirley Avenue, Kitchener, ON Canada N2B 2E1 | Toll-free: 1.888.ROADTREK (762-3873) | Phone: 519.745.0711 | Fax: 519.745.1170



# 190 Popular

# 190 Popular



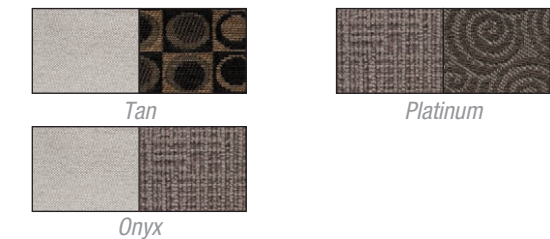
<b>Travel Capacity</b>	Six
<b>Sleeping Capacity</b>	Three
<b>Dining</b>	Front & rear
<b>Engine</b>	6.0 L SFI gas V8
<b>Batteries</b>	Two 6 V AGM, 2,400 W
<b>Water Heater</b>	Propane with bypass, 23 L/6 U.S. gal., 12,000 BTU
<b>Water Capacity</b>	
<b>Fresh</b>	115 L/31 U.S. gal.
<b>Black</b>	40 L/10 U.S. gal.
<b>Gray</b>	85 L/23 U.S. gal.
<b>Tow Weight</b>	8,200 lbs. (3,700 kg)
<b>Tongue Weight</b>	1,000 lbs. (450 kg)
<b>RV Warranty</b>	5 year unlimited mileage/ km, RV limited warranty covering the manufacture of the motorhome only (excludes chassis)

## Interior Color Options

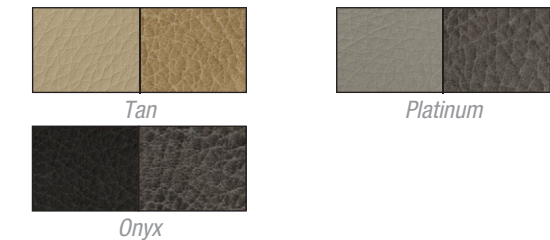
### Cabinetry



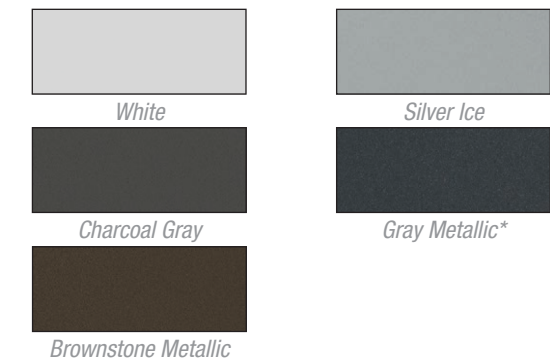
### Main & Accent Fabric



### Leather Seating



### Exterior Paint Options



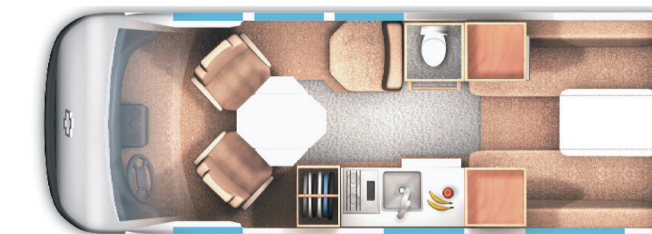
## Your home away from home

The best vacations are a combination of excitement, adventure, rest and relaxation. With the 190 Popular, no longer do you need to sacrifice all the comforts and conveniences of home in order to achieve your dream vacation. The 190 Popular is the perfect mix of style and comfort with everything you need at your fingertips including a full-length wardrobe, ample storage, dining at the front, sleeping at the rear, and a well equipped galley. Whether you are headed away for a weekend escape, or have a longer vacation planned, the 190 Popular is the perfect way to get away from it all.



## Features

- Galley features 3.0 cu. ft. refrigerator, microwave and two burner recessed stove
- Power sofa easily converts to a king or twin bed(s)
- Ample storage including full-length wardrobe
- Separate eating and sleeping areas



# 190 Popular

## Specifications

<b>Exterior length</b>	20' 5" (6,220 mm)
<b>Exterior width (without mirrors)</b>	6' 7" (2,007 mm)
<b>Interior aisle width</b>	30" (760 mm)
<b>Exterior height</b>	8' 9" (2,660 mm)
<b>Interior standing height</b>	6' 1" (1,855 mm)
<b>Wheelbase</b>	155" (3,940 mm)
<b>Gross vehicle weight rating</b>	9,600 lbs. (4,355 kg)
<b>Occupant &amp; cargo carrying capacity*</b>	2,000 lbs. (900 kg)
<b>Gross combined weight rating*</b>	16,000 lbs. (7,258 kg)
<b>Towing – tow weight*</b>	8,200 lbs. (3,700 kg)
<b>Towing – tongue weight*</b>	1,000 lbs. (450 kg)
<b>Fuel type</b>	Gas
<b>Fresh water capacity</b>	115 L/31 U.S. gal.
<b>Black holding tank capacity</b>	40 L/10 U.S. gal.
<b>Gray holding tank capacity</b>	85 L/23 U.S. gal.
<b>Storage capacity (with options)</b>	1,520 L/54 cu. ft. (1,680 L/59 cu. ft.)
<b>Rear king sleeping maximum (width x length)</b>	73" x 76" (1,855 mm x 1,930 mm)
<b>Rear twin bed - Left (width x length)</b>	27" x 76" (690 mm x 1,930 mm)
<b>Rear twin bed - Right (width x length)</b>	27" x 72" (690 mm x 1,830 mm)
<b>Front single bed - Right (width x length)</b>	22" x 74" (560 mm x 1,880 mm)

\* Refer to [www.roadtrek.com](http://www.roadtrek.com) for more details.

## RV Warranty

5 year unlimited mileage/km, RV limited warranty covering the manufacture of the motorhome only (excludes chassis).

## Chassis Warranty

3 year/36,000 mile or 60,000 km limited "bumper to bumper" warranty and 5 year/100,000 mile or 160,000 km limited powertrain warranty as offered by General Motors. Refer to chassis manufacturers' website for details.

Roadtrek Motorhomes Inc. reserves the right to make changes at any time, without notice, in colors, materials, equipment, specifications and models. This information is intended as a guide only; please visit [www.roadtrek.com](http://www.roadtrek.com) for a complete list of specifications and options. Some motorhomes may be shown with equipment that is optional. Accessories shown in the photography are not included.

## Coach Features

	Standard	Optional
40 <sup>th</sup> Anniversary package – mocha steel custom paint with tricoat crushed glass clear coat, Four Season RVing package, permanent bathroom package, bamboo cabinets, 3,000 W inverter/converter/charger/battery restorer, 225 W solar panel & charge controller, LED strip lighting, four 4,800 W batteries, 280 AMP engine generator, spare tire mounted underneath the unit, 2" increased headroom		<b>X</b>
Air conditioner – 110 V, 10,200 BTU	<b>X</b>	
Armoire – interchangeable with right lounge seat		<b>X</b>
Awning – 11' 6" (3,500 mm) power awning	<b>X</b>	
Bathroom – temporarily enclosed with bifold door	<b>X</b>	
Bathroom – permanently enclosed with sink & shower		<b>X</b>
Batteries – two 6 V AGM, 2,400 W	<b>X</b>	
Batteries – additional two 6 V AGM batteries		<b>X</b>
Connection – external – 110 V	<b>X</b>	
Detectors – smoke, propane & CO	<b>X</b>	
Furnace – propane automatic, 16,000 BTU	<b>X</b>	
Generator – conventional – gasoline with remote-start, 2.8 kW		<b>X</b>
Generator – under-hood		<b>X</b>
Home theater system – 5.1 surround sound & dual center speakers with DVD, CD, AM/FM radio, dual use rear speakers	<b>X</b>	
Mattress – single folding for 1 <sup>st</sup> & 2 <sup>nd</sup> row seats		<b>X</b>
Microwave oven – 110 V, 20 L/0.7 cu. ft., 700 W	<b>X</b>	
Monitor panel – water, propane & battery charge levels, battery disconnect & generator hour meter	<b>X</b>	
Power converter with charger – 110/12 V, 3-step 45 AMP charger	<b>X</b>	
Power inverter – 12/110 V, 750 W	<b>X</b>	
Propane tank – 38 L/10 U.S. gal., 45 lbs.	<b>X</b>	
Rear power sofa – fabric		<b>X</b>
Rear power sofa – faux leather		<b>X</b>
Refrigerator – 12 V/110 V propane, 3.0 cu. ft. with auto source selection	<b>X</b>	
Seats - passenger side 2 <sup>nd</sup> row captains seat		<b>X</b>
Screen package – side door windows, side door & rear door		<b>X</b>
Sewage disposal system – 12 V macerator sewage pump	<b>X</b>	
Solar charging system - daylight - 200 W with charge controller		<b>X</b>
Storage compartments (exterior) – two below floor	<b>X</b>	
Stove – propane; two burner recessed with flush cover	<b>X</b>	
TV – 22" HD flat screen on rotating bracket with remote		<b>X</b>
Water heater – propane with bypass, 23 L/6 U.S. gal., 12,000 BTU	<b>X</b>	
Water system – on demand 12 V with water pump	<b>X</b>	

## Chassis Features

	Standard	Optional
Airbag – driver & passenger (with passenger on/off switch)	<b>X</b>	
Alternator – 145 AMP	<b>X</b>	
Axle – rear – 3.42 ratio	<b>X</b>	
Battery – 600 AMP	<b>X</b>	
Brakes – anti-lock (ABS), four wheel disc	<b>X</b>	
Camera – rearview backup	<b>X</b>	
Climate control	<b>X</b>	
Continental spare tire carrier		<b>X</b>
Cooling – transmission oil – external	<b>X</b>	
Cruise control	<b>X</b>	
Engine – 6.0 L SFI gas V8	<b>X</b>	
Fender flares		<b>X</b>
Headlights – automatic on/off	<b>X</b>	
Mirrors (exterior) – power, heated with convex OnStar®	<b>X</b>	<b>X</b>
Power – 224 kW/323 HP	<b>X</b>	
Radio – audio system with navigation, AM/FM stereo with MP3 compatible CD/DVD player & navigation, USB port, seek-and-scan, digital clock, auto-tone control, Radio Data System (RDS), speed-compensated volume & TheftLock®	<b>X</b>	
Receiver – Class IV	<b>X</b>	
Stability program	<b>X</b>	
Theft deterrent system	<b>X</b>	
Tilt steering	<b>X</b>	
Tire storage – rear storage area	<b>X</b>	
Tires – LT245/75R16E black wall	<b>X</b>	
Torque – 504 Nm/373 lb.-ft.	<b>X</b>	
Transmission – automatic 6-speed heavy duty	<b>X</b>	
Wheels – 16" aluminum polished with steel spare		<b>X</b>
Window operation – power; front doors only	<b>X</b>	
Wiring harness for towing – 4-way & 7-way connector	<b>X</b>	

## Find Your Roadtrek



## Connect With Us



Roadtrek Motorhomes Inc. 100 Shirley Avenue, Kitchener, ON Canada N2B 2E1 | Toll-free: 1.888.ROADTREK (762-3873) | Phone: 519.745.0711 | Fax: 519.745.1170





210 Popular

# 210 Popular



<b>Travel Capacity</b>	Five (USA)/Three (CAN)
<b>Sleeping Capacity</b>	Three
<b>Dining</b>	Front & rear
<b>Engine</b>	6.0 L SFI gas V8
<b>Batteries</b>	Two 6 V AGM, 2,400 W
<b>Water Heater</b>	Propane with bypass, 23 L/6 U.S. gal., 12,000 BTU
<b>Water Capacity</b>	
<b>Fresh</b>	135 L/36 U.S. gal.
<b>Black</b>	40 L/10 U.S. gal.
<b>Gray</b>	85 L/23 U.S. gal.
<b>Tow Weight</b>	7,650 lbs. (3,450 kg)
<b>Tongue Weight</b>	1,000 lbs. (450 kg)
<b>RV Warranty</b>	5 year unlimited mileage/ km, RV limited warranty covering the manufacture of the motorhome only (excludes chassis)

## Interior Color Options

### Cabinetry



Cherry

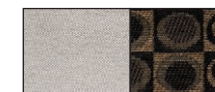


Ebony

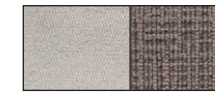


Bamboo

### Main & Accent Fabric



Tan



Onyx

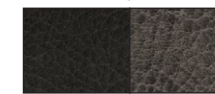


Platinum

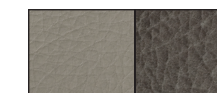
### Leather Seating



Tan



Onyx

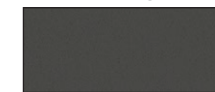


Platinum

### Exterior Paint Options



White



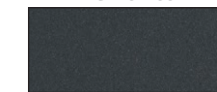
Charcoal Gray



Brownstone Metallic



Silver Ice



Gray Metallic\*

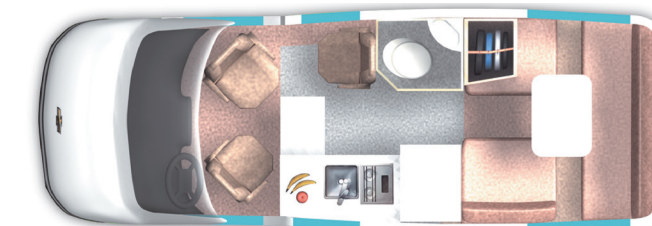
## The ultimate fusion of design

A true Class B motorhome, the 210 Popular was crafted with care and precision. From front to rear you will find the 210 Popular has a spacious design and an abundance of storage so you'll never have to leave anything behind. The rear power sofa folds down into a luxurious king-size bed for two, with an additional sleeping area at the front for a third passenger. Experience diverse, exciting and beautiful locations with the 210 Popular, and fulfill all your travel dreams.



## Features

- Expansive galley with a beautiful granite countertop, convection microwave oven, and a 5 cu. ft. refrigerator
- Automatic propane heating system
- Extensive storage capacity
- Comfortable and spacious permanent bathroom with stand-up shower
- Increased interior headroom





# 210 Popular

## Specifications

<b>Exterior length</b>	21' 11" (6,680 mm)
<b>Exterior width (without mirrors)</b>	7' 4" (2,135 mm)
<b>Interior aisle width</b>	30" (760 mm)
<b>Exterior height</b>	8' 9" (2,660 mm)
<b>Interior standing height</b>	6' 2" (1,880 mm)
<b>Wheelbase</b>	155" (3,940 mm)
<b>Gross vehicle weight rating</b>	9,600 lbs. (4,355 kg)
<b>Occupant &amp; cargo carrying capacity*</b>	1,450 lbs. (650 kg)
<b>Gross combined weight rating*</b>	16,000 lbs. (7,258 kg)
<b>Towing – tow weight*</b>	7,650 lbs. (3,450 kg)
<b>Towing – tongue weight*</b>	1,000 lbs. (450 kg)
<b>Fuel type</b>	Gas
<b>Fresh water capacity</b>	135 L/36 U.S. gal.
<b>Black holding tank capacity</b>	40 L/10 U.S. gal.
<b>Gray holding tank capacity</b>	85 L/23 U.S. gal.
<b>Storage capacity (with options)</b>	1,940 L/69 cu. ft. (2,040 L/72 cu. ft.)
<b>Rear king sleeping maximum (width x length)</b>	80" x 78" (2,030 mm x 1,980 mm)
<b>Rear twin bed (width x length)</b>	30" x 78" (760 mm x 1,980 mm)
<b>Front single bed (width x length)</b>	22" x 74" (560 mm x 1,880 mm)

\* Refer to [www.roadtrek.com](http://www.roadtrek.com) for more details.

## RV Warranty

5 year unlimited mileage/km, RV limited warranty covering the manufacture of the motorhome only (excludes chassis).

## Chassis Warranty

3 year/36,000 mile or 60,000 km limited "bumper to bumper" warranty and 5 year/100,000 mile or 160,000 km limited powertrain warranty as offered by General Motors. Refer to chassis manufacturers' website for details.

Roadtrek Motorhomes Inc. reserves the right to make changes at any time, without notice, in colors, materials, equipment, specifications and models. This information is intended as a guide only; please visit [www.roadtrek.com](http://www.roadtrek.com) for a complete list of specifications and options. Some motorhomes may be shown with equipment that is optional. Accessories shown in the photography are not included.

## Coach Features

	Standard	Optional
Air conditioner – 110 V, 10,200 BTU	X	
Armoire – interchangeable with right lounge seat		X
Awning – 11' 6" (3,500 mm) power awning	X	
Bathroom – permanently enclosed with sink & shower	X	
Batteries – two 6 V AGM, 2,400 W	X	
Batteries – additional two 6 V AGM batteries		X
Connection – external – 110 V	X	
Detectors – smoke, propane & CO	X	
Furnace – propane automatic, 16,000 BTU	X	
Generator – conventional – gasoline with remote-start, 2.8 kW		X
Generator – under-hood		X
Generator/alternator – engine mounted 12 V, 3,500 W		X
Home theater system with 5.1 surround sound & dual center speakers with DVD, CD, AM/FM radio, dual use rear speakers	X	
Mattress – single folding for 1 <sup>st</sup> & 2 <sup>nd</sup> row seats		X
Microwave oven – 110 V convection, 28 L/1.0 cu. ft., 1,800 W convection/1,000 W microwave	X	
Monitor panel – water, propane & battery charge levels, battery disconnect & generator hour meter	X	
Power converter with charger – 110/12 V, 3-step 45 AMP charger	X	
Power inverter – 12/110 V, 750 W	X	
Propane tank – 38 L/10 U.S. gal., 45 lbs.	X	
Rear power sofa – fabric		X
Rear power sofa – faux leather		X
Refrigerator – 12 V/110 V propane, 5.0 cu. ft. with auto source selection	X	
Seats – passenger side 2 <sup>nd</sup> row captain seats		X
Screen package – side door windows, side door & rear door		X
Sewage disposal system – 12 V macerator sewage pump	X	
Solar charging system - daylight - 200 W with charge controller		X
Storage compartments (exterior) – three below floor	X	
Stove – propane; two burner recessed with flush cover	X	
TV – 22" HD flat screen on rotating bracket with remote		X
Water heater – propane with bypass, 23 L/6 U.S. gal., 12,000 BTU	X	
Water system – on demand 12 V with water pump	X	

## Chassis Features

	Standard	Optional
Airbag – driver & passenger (with passenger on/off switch)	X	
Alternator – 145 AMP	X	
Axle – rear – 3.42 ratio	X	
Battery – 600 AMP	X	
Brakes – anti-lock (ABS), four wheel disc	X	
Camera – rearview backup	X	
Climate control	X	
Continental spare tire carrier		X
Cooling – transmission oil – external	X	
Cruise control	X	
Engine – 6.0 L SFI gas V8	X	
Headlights – automatic on/off	X	
Mirrors (exterior) – power, heated with convex	X	
OnStar®		X
Power – 224 kW/323 HP	X	
Radio – audio system with navigation, AM/FM stereo with MP3 compatible CD/DVD player & navigation, USB port, seek-and-scan, digital clock, auto-tone control, Radio Data System (RDS), speed-compensated volume & TheftLock®		X
Receiver – Class IV	X	
Stability program	X	
Theft deterrent system	X	
Tilt steering	X	
Tire storage – rear storage area	X	
Tires – LT245/75R16E black wall	X	
Torque – 504 Nm/373 lb.-ft.	X	
Transmission – automatic 6-speed heavy duty	X	
Wheels – 16" aluminum polished with steel spare		X
Window operation – power; front doors only	X	
Wiring harness for towing – 4-way & 7-way connector	X	

## Find Your Roadtrek



## Connect With Us



Roadtrek Motorhomes Inc. 100 Shirley Avenue, Kitchener, ON Canada N2B 2E1 | Toll-free: 1.888.ROADTREK (762-3873) | Phone: 519.745.0711 | Fax: 519.745.1170





*CS Adventurous*

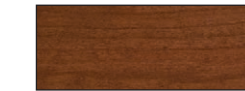
# CS Adventurous



<b>Travel Capacity</b>	Six
<b>Sleeping Capacity</b>	Three
<b>Dining</b>	Front & rear
<b>Engine</b>	3.0 L CRD V6 turbo diesel BlueTec®
<b>Batteries</b>	Two 6 V AGM, 2,400 W
<b>Water Heater</b>	Propane, 11 L/3 U.S. gal., 10,000 BTU
<b>Water Capacity</b>	
<b>Fresh</b>	125 L/33 U.S. gal.
<b>Black</b>	40 L/10 U.S. gal.
<b>Gray</b>	80 L/21 U.S. gal.
<b>Tow Weight</b>	7,000 lbs. (3,200 kg)
<b>Tongue Weight</b>	750 lbs. (340 kg)
<b>RV Warranty</b>	5 year unlimited mileage/km, RV limited warranty covering the manufacture of the motorhome only (excludes chassis)

## Interior Color Options

### Cabinetry



Cherry



Bamboo



Ebony

### Main & Accent Fabric

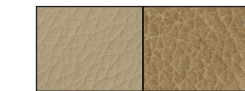


Tan

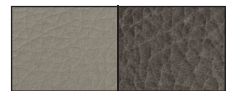


Platinum/Onyx

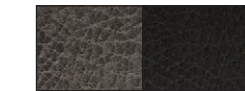
### Leather Seating



Tan



Platinum



Onyx

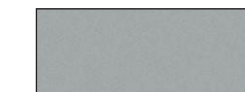
## Exterior Paint Options



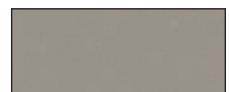
White



Midnight Black



Silver Ice



Champagne Pearl



Charcoal Gray



Ruby Red Metallic

## Camping has never looked so good

Built on quality, perfected with style, comfort and all the conveniences you need, the CS Adventurous was designed with the heart of a camper in mind. The efficient, compact, and fun CS Adventurous has everything you would ever need for all your outdoor adventures. The CS Adventurous is not your traditional RV, with its sleek styling and size, ease of driving and great fuel economy, no destination is off limits. With seating for six, sleeping for three, and plenty of interior storage, it's camping in a way you never imagined.



## Features

- Expanded galley features a 7 cu. ft. refrigerator, convection microwave and abundant storage
- Hydronic heating system provides in-floor radiant heat throughout, supplementary radiant heat in the bathroom, and hot water
- Panoramic windows from front to rear
- Comfortable and spacious permanent bathroom with stand-up shower



# CS Adventurous

## Specifications

<b>Exterior length</b>	22' 9" (6,945 mm)
<b>Exterior width (without mirrors)</b>	6' 8" (2,025 mm)
<b>Interior aisle width</b>	28" (710 mm)
<b>Exterior height (with roof AC)</b>	9' 7" (2,920 mm)
<b>Interior standing height</b>	6' 2" (1,880 mm)
<b>Wheelbase</b>	170" (4,325 mm)
<b>Gross vehicle weight rating</b>	11,030 lbs. (5,003 kg)
<b>Occupant &amp; cargo carrying capacity*</b>	3,000 lbs. (1,350 kg)
<b>Gross combined weight rating*</b>	15,250 lbs. (6,915 kg)
<b>Towing – tow weight*</b>	7,000 lbs. (3,200 kg)
<b>Towing – tongue weight*</b>	750 lbs. (340 kg)
<b>Fuel type</b>	Diesel
<b>Fresh water capacity</b>	125 L/33 U.S. gal.
<b>Black holding tank capacity</b>	40 L/10 U.S. gal.
<b>Gray holding tank capacity</b>	80 L/21 U.S. gal.
<b>Storage capacity (with options)</b>	1,880 L/66 cu. ft. (2,220 L/78 cu. ft.)
<b>Rear king sleeping maximum (width x length)</b>	69" x 78" (1,750 mm x 1,980 mm)
<b>Rear twin bed sleeping (width x length)</b>	25" x 78" (635 mm x 1,980 mm)
<b>Front single bed (width x length)</b>	22" x 76" (560 mm x 1,930 mm) – optional feature

\* Refer to [www.roadtrek.com](http://www.roadtrek.com) for more details.

## RV Warranty

5 year, unlimited mileage/km, RV limited warranty covering the manufacture of the motorhome only (excludes chassis).

## Chassis Warranty

3 year/36,000 mile or 60,000 km base limited warranty and 5 year/100,000 mile or 160,000 km limited diesel engine components warranty as offered by Mercedes. Refer to chassis manufacturers' website for details.

Roadtrek Motorhomes Inc. reserves the right to make changes at any time, without notice, in colors, materials, equipment, specifications and models. This information is intended as a guide only; please visit [www.roadtrek.com](http://www.roadtrek.com) for a complete list of specifications and options. Some motorhomes may be shown with equipment that is optional. Accessories shown in the photography are not included.

## Coach Features

	Standard	Optional
Air conditioner – 110 V, 11,000 BTU roof mount	X	
Armoire – with adjustable shelves & drawers; interchangeable with right 2 <sup>nd</sup> row seat		X
Awning – 13' 2" (4,000 mm) power awning	X	
Bathroom – permanently enclosed with sink & shower	X	
Batteries – two 6 V AGM, 2,400 W	X	
Batteries – four 6 V AGM, 4,800 W		X
Cabinet – permanent wardrobe – replaces driver side 2 <sup>nd</sup> row seat		X
Connection – external – 110 V with detachable power cord	X	
Detectors – smoke, propane & CO	X	
Furnace – propane in-floor radiant heating, 10,000 BTU	X	
Generator – conventional – propane with remote-start, 2.5 kW		X
Generator – under-hood	X	
Generator/alternator – engine mounted 12 V, 3,500 W		X
Home theater system with 5.1 surround sound & dual center speakers with DVD, CD, AM/FM radio, dual use rear speakers	X	
Mattress – single folding for 1 <sup>st</sup> & 2 <sup>nd</sup> row seats		X
Microwave oven – 110 V convection, 28 L/1.0 cu. ft., 1,800 W convection/1,000 W microwave	X	
Monitor panel – water, propane & battery charge levels, battery disconnect & generator hour meter	X	
Power inverter – 12/110 V, 3,000 W with remote	X	
Propane tank – 60 L/16 U.S. gal., 70 lbs.	X	
Rear power sofa – fabric	X	
Rear power sofa – faux leather		X
Refrigerator – 12 V/110 V compressor driven with thermostat, 7.0 cu. ft.	X	
Screen package – rear doors only		X
Sewage disposal system – 12 V macerator sewage pump	X	
Solar charging system – daylight – 240 W with charge controller		X
Solar package – two additional 6 V AGM deep cycle auxiliary batteries (4,800 W available), solar charging system (240 W), 3,500 W under-hood generator, upgraded 6 year warranty		X
Storage compartments (exterior) – one below floor	X	
Stove – propane; two burner recessed with flush cover & built-in igniter	X	
Stove – induction cooktop		X
TV – 22" HD flat screen on rotating bracket with remote		X
Water heater – propane, 11 L/3 U.S. gal., 10,000 BTU	X	
Water system – on demand 12 V with water pump	X	

## Chassis Features

	Standard	Optional
Airbag – driver & passenger	X	
Alternator – 14 V/220 AMP	X	
Axle – rear – 3.92 (USA) 4.18 (CAN) ratio	X	
Battery – 760 AMP	X	
Brakes – anti-lock (ABS), four wheel disc	X	
Camera – rearview backup	X	
Climate control – electronic with glove box cooler	X	
Cooling – transmission oil – external	X	
Cruise control	X	
Engine – 3.0 L CRD V6 turbo diesel BlueTec®	X	
Headlights – automatic on/off	X	
Luxury chassis OEM option package		X
Power – 140 kW/188 HP	X	
Radio – Mercedes Becker Map Pilot Navigation System with Bluetooth & on-dash keypad, audio 15 FM/AM, aux-in, USB	X	
Receiver – Class III	X	
Stability program – adaptive (accounts for load)	X	
Theft deterrent system	X	
Tilt steering	X	
Tire storage – vehicle underside between axles	X	
Tires – LT215/85R16E black wall dual rear	X	
Torque – 440 Nm/325 lb.-ft.	X	
Traction control	X	
Transmission – automatic 5-speed heavy duty	X	
Wheels – 16" aluminum polished with steel spare		X
Window operation – power; front doors only	X	
Wiring harness for towing – E40 wire harness & 7 pin connector	X	
XL Package - 18" extended chassis at rear		X

## Find Your Roadtrek



## Connect With Us



Roadtrek Motorhomes Inc. 100 Shirley Avenue, Kitchener, ON Canada N2B 2E1 | Toll-free: 1.888.ROADTREK (762-3873) | Phone: 519.745.0711 | Fax: 519.745.1170





E-trek

# E-trek

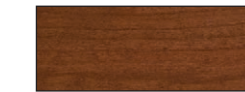


<b>Travel Capacity</b>	Seven
<b>Sleeping Capacity</b>	Four
<b>Dining</b>	Front & rear
<b>Engine</b>	3.0 L CRD V6 turbo diesel BlueTec®
<b>Solar Panel</b>	240 W
<b>Batteries</b>	Eight 6 V, 9,600 W
<b>Water Capacity</b>	
<b>Fresh</b>	125 L/33 U.S. gal.
<b>Black</b>	40 L/10 U.S. gal.
<b>Gray</b>	80 L/21 U.S. gal.
<b>Tow Weight</b>	7,000 lbs. (3,200 kg)
<b>Tongue Weight</b>	750 lbs. (340 kg)

**Extended RV Warranty**  
 6 year unlimited mileage/km limited warranty covering the manufacture of the motorhome, appliances, electronics, plumbing and batteries (excludes chassis)

## Interior Color Options

### Cabinetry



Cherry



Bamboo



Ebony

### Main & Accent Fabric

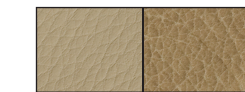


Tan

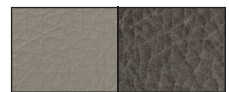


Platinum/Onyx

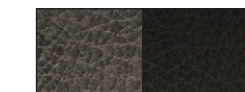
### Leather Seating



Tan



Platinum



Onyx

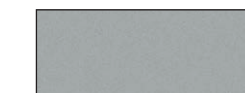
## Exterior Paint Options



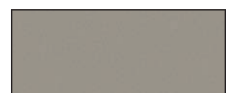
White



Midnight Black



Silver Ice



Champagne Pearl



Charcoal Gray



Ruby Red Metallic

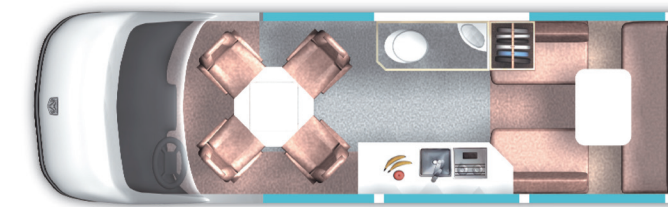
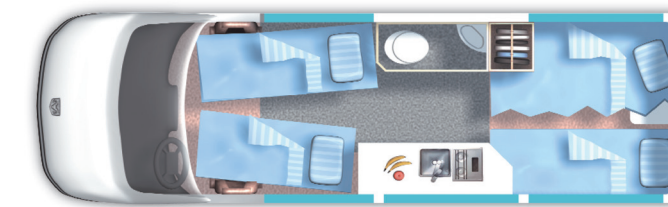
## The eco-conscious travel companion

The environmentally conscious E-trek is packed with all the luxury and functionality you could ever imagine in a motorhome. Giving you the best of both worlds, the E-trek uses diesel as its primary fuel source to provide you the comfort of heat and hot water while a 240 W solar charging system helps to offset power use to reduce your carbon emissions. Our commitment to the environment, technology and functionality in a motorhome is evident throughout the entire design of the E-trek. It's more than a vacation getaway, it's a lifestyle.



## Features

- Includes a 240 W solar panel and eight 6 V auxiliary AGM batteries
- Expansive galley features an induction cooktop and instant hot water system
- Diesel powered water heater and furnace combination
- Panoramic windows from front to rear





## Specifications

<b>Exterior length</b>	22' 9" (6,945 mm)
<b>Exterior width (without mirrors)</b>	6' 8" (2,025 mm)
<b>Interior aisle width</b>	28" (710 mm)
<b>Exterior height (with roof AC)</b>	9' 7" (2,920 mm)
<b>Interior standing height</b>	6' 3" (1,910 mm)
<b>Wheelbase</b>	170" (4,325 mm)
<b>Gross vehicle weight rating</b>	11,030 lbs. (5,003 kg)
<b>Occupant &amp; cargo carrying capacity*</b>	2,500 lbs. (1,150 kg)
<b>Gross combined weight rating*</b>	15,250 lbs. (6,915 kg)
<b>Towing – tow weight*</b>	7,000 lbs. (3,200 kg)
<b>Towing – tongue weight*</b>	750 lbs. (340 kg)
<b>Fuel type</b>	Diesel
<b>Fresh water capacity</b>	125 L/33 U.S. gal.
<b>Black holding tank capacity</b>	40 L/10 U.S. gal.
<b>Gray holding tank capacity</b>	80 L/21 U.S. gal.
<b>Storage capacity (with options)</b>	1,430 L/51 cu. ft. (2,410 L/85 cu. ft.)
<b>Rear king sleeping maximum (width x length)</b>	69" x 78" (1,750 mm x 1,980 mm)
<b>Rear twin bed sleeping (width x length)</b>	25" x 78" (635 mm x 1,980 mm)
<b>Front single bed (width x length)</b>	22" x 76" (560 mm x 1,930 mm) – optional feature

\* Refer to [www.roadtrek.com](http://www.roadtrek.com) for more details.

## Extended RV Warranty

6 year unlimited mileage/km limited warranty covering the manufacture of the motorhome, appliances, electronics, plumbing and batteries (excludes chassis).

## Chassis Warranty

3 year/36,000 mile or 60,000 km base limited warranty and 5 year/100,000 mile or 160,000 km limited diesel engine components warranty as offered by Mercedes. Refer to chassis manufacturers' website for details.

Roadtrek Motorhomes Inc. reserves the right to make changes at any time, without notice, in colors, materials, equipment, specifications and models. This information is intended as a guide only; please visit [www.roadtrek.com](http://www.roadtrek.com) for a complete list of specifications and options. Some motorhomes may be shown with equipment that is optional. Accessories shown in the photography are not included.

## Coach Features

	Standard	Optional
Air conditioner – 110 V, 11,000 BTU roof mount	X	
Armoire – with adjustable shelves & drawers; interchangeable with right captain seat		X
Awning – 13' 2" (4,000 mm) power awning	X	
Bathroom – permanently enclosed with sink & shower	X	
Batteries – eight 6 V, 9,600 W	X	
Cabinet – permanent wardrobe – replaces driver side 2 <sup>nd</sup> row seat		X
Connection – external – 110 V with detachable power cord (30 AMP)	X	
Detectors – smoke & CO	X	
Furnace – combination furnace/water heater, 16,000 BTU	X	
Generator/alternator – engine mounted 24 V 3,500 W	X	
Home theater system with 5.1 surround sound & dual center speakers with DVD, CD, AM/FM radio, dual use rear speakers	X	
Mattress – single folding for 1 <sup>st</sup> & 2 <sup>nd</sup> row seats		X
Microwave oven – 110 V convection, 28 L/1.0 cu. ft., 1,800 W convection/1,000 W microwave	X	
Monitor panel – water & battery charge levels, battery disconnect surge protection & power monitoring on control panel	X	
Power inverter – 24/110 V, 5,000 W	X	
Rear power sofa – faux leather	X	
Refrigerator – 12 V/110 V compressor driven with thermostat, 3.6 cu. ft.	X	
Screen package – rear doors only		X
Sewage disposal system – 12 V macerator sewage pump	X	
Solar charging system – daylight – 240 W with charge controller	X	
Stove – 110 V flush-mounted one burner inductive cooktop	X	
TV – 22" HD flat screen on rotating bracket with remote		X
Water heater – combination water heater/furnace, 110 V, 9 L/2.5 U.S. gal.	X	
Water system – on demand 12 V with water pump	X	

## Chassis Features

	Standard	Optional
Airbag – driver & passenger	X	
Alternator – 14 V/220 AMP	X	
Axle – rear – 3.92 (USA) 4.18 (CAN) ratio	X	
Battery – 760 AMP	X	
Brakes – anti-lock (ABS), four wheel disc	X	
Camera – rearview backup	X	
Climate control – electronic with glove box cooler	X	
Cooling – transmission oil – external	X	
Cruise control	X	
Engine – 3.0 L CRD V6 turbo diesel BlueTec®	X	
Headlights – automatic on/off	X	
Luxury chassis OEM option package		X
Power – 140 kW/188 HP	X	
Radio – Mercedes Becker Map Pilot Navigation System with Bluetooth & on-dash keypad, audio 15 FM/AM, aux-in, USB	X	
Receiver – Class III	X	
Stability program – adaptive (accounts for load)	X	
Theft deterrent system	X	
Tilt steering	X	
Tire storage – vehicle underside between axles	X	
Tires – LT215/85R16E black wall dual rear	X	
Torque – 440 Nm/325 lb.-ft.	X	
Traction control	X	
Transmission – automatic 5-speed heavy duty	X	
Wheels – 16" aluminum polished with steel spare		X
Window operation – power; front doors only	X	
Wiring harness for towing – E40 wire harness & 7 pin connector	X	
XL Package - 18" extended chassis at rear		X

### Find Your Roadtrek



### Connect With Us



Roadtrek Motorhomes Inc. 100 Shirley Avenue, Kitchener, ON Canada N2B 2E1 | Toll-free: 1.888.ROADTREK (762-3873) | Phone: 519.745.0711 | Fax: 519.745.1170





# RANGER RT



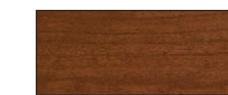
# RANGER RT



<b>Travel Capacity</b>	Four
<b>Sleeping Capacity</b>	Two
<b>Dining</b>	Front & rear
<b>Engine</b>	4.8 L SFI gas V8
<b>Batteries</b>	Two 6 V AGM, 2,400 W
<b>Water Heater</b>	110 V, 9 L/2.5 U.S. gal.
<b>Water Capacity</b>	
<b>Fresh</b>	65 L/18 U.S. gal.
<b>Black</b>	40 L/10 U.S. gal.
<b>Gray</b>	85 L/23 U.S. gal.
<b>RV Warranty</b>	5 year unlimited mileage/km, RV limited warranty covering the manufacture of the motorhome only (excludes chassis)

## Interior Color Options

### Option One



Cherry - Cabinetry



Platinum - Main & Accent Fabric

### Option Two



Ebony - Cabinetry



Onyx - Main & Accent Fabric

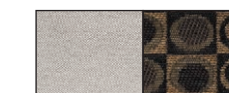


Onyx - Faux Leather Seating

### Option Three



Bamboo - Cabinetry



Tan - Main & Accent Fabric



Tan - Faux Leather Seating

## Exterior Paint



White

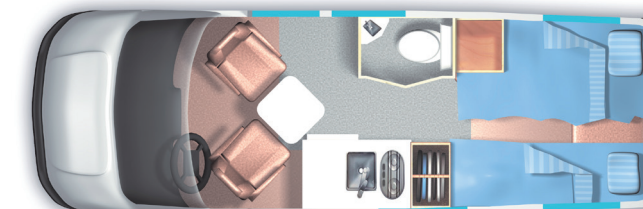
## Good things come in small packages

Setting a new standard in a mid-size package, the Ranger RT offers all the luxuries of a fully equipped camper van but with the added benefits of impressive fuel efficiency from a smaller engine and a lighter chassis. The great use of space in the Ranger RT simplifies the energy sources to electricity and gasoline for easier operation and less maintenance. This compact yet sensible model makes it easy to travel often, maneuvering across the countryside with ease, and taking in all the beautiful landscapes and awe-inspiring views along the way.



## Features

- Induction cooktop for a safe, fast and energy efficient way to cook
- Power sofa easily converts to a king or twin bed(s)
- Separate eating and sleeping areas
- Permanent bathroom with sink and sit-down shower



# RANGER RT

## Specifications

Exterior length	20' 5" (6,220 mm)
Exterior width (without mirrors)	6' 7" (2,007 mm)
Interior aisle width	26" (660 mm)
Exterior height	8' 9" (2,660 mm)
Interior standing height	6' 1" (1,855 mm)
Wheelbase	155" (3,940 mm)
Gross vehicle weight rating	8,600 lbs. (3,900 kg)
Occupant & cargo carrying capacity*	1,700 lbs. (750 kg)
Gross combined weight rating*	13,000 lbs. (5,897 kg)
Fuel type	Gas
Fresh water capacity	65 L/18 U.S. gal.
Black holding tank capacity	40 L/10 U.S. gal.
Gray holding tank capacity	85 L/23 U.S. gal.
Storage capacity	1,390 L/49 cu. ft.
Rear king sleeping maximum (width x length)	73" x 76" (1,855 mm x 1,930 mm)
Rear twin bed - Left (width x length)	27" x 76" (690 mm x 1,930 mm)
Rear twin bed - Right (width x length)	27" x 72" (690 mm x 1,830 mm)

\* Refer to [www.roadtrek.com](http://www.roadtrek.com) for more details.

## RV Warranty

5 year unlimited mileage/km, RV limited warranty covering the manufacture of the motorhome only (excludes chassis).

## Chassis Warranty

3 year/36,000 mile or 60,000 km limited "bumper to bumper" warranty and 5 year/100,000 mile or 160,000 km limited powertrain warranty as offered by General Motors. Refer to chassis manufacturers' website for details.

Roadtrek Motorhomes Inc. reserves the right to make changes at any time, without notice, in colors, materials, equipment, specifications and models. This information is intended as a guide only; please visit [www.roadtrek.com](http://www.roadtrek.com) for a complete list of specifications and options. Some motorhomes may be shown with equipment that is optional. Accessories shown in the photography are not included.

## Coach Features

	Standard	Optional
Air conditioner – 110 V, 10,200 BTU	X	
Awning – 11' 6" (3,500 mm) power awning		X
Bathroom – permanently enclosed with sink & shower	X	
Batteries – two 6 V AGM, 2,400 W	X	
Connection – external – 110 V	X	
Detectors – smoke, propane & CO	X	
Furnace – propane automatic, 16,000 BTU		X
Generator – conventional – gasoline with remote-start, 2.8 kW with continental spare tire kit		X
Generator – under-hood		X
Generator/alternator – engine mounted 12 V 3,500 W		X
Microwave oven – 110 V convection, 20 L/0.7 cu. ft., 700 W	X	
Monitor panel – water, propane (with option) & battery charge levels, battery disconnect & generator hour meter (with option)	X	
Power converter with charger – 110/12 V, 3-step 45 AMP charger	X	
Power inverter – 12/110 V, 1,250 W (with 4 receptacles)	X	
Propane tank – 25 L/7 U.S. gal., 30 lbs.		X
Rear power sofa – fabric	X	
Refrigerator – 12 V/110 V compressor driven with thermostat, 3.1 cu. ft.	X	
Screen package – side door windows, side door & rear door		X
Sewage disposal system – gravity	X	
Solar charging system - daylight - 200 W with charge controller		X
Storage compartments (exterior) – two below floor	X	
Stove – 110 V one burner inductive cooktop	X	
Stove – propane		X
TV/DVD – 22" HD flat screen on rotating bracket with remote		X
Water heater – 110 V, 9 L/2.5 U.S. gal.	X	
Water system – on demand 12 V with water pump	X	

## Chassis Features

	Standard	Optional
Airbag – driver & passenger (with passenger on/off switch)	X	
Alternator – 145 AMP	X	
Axle – rear – 3.42 ratio	X	
Battery – 600 AMP	X	
Brakes – anti-lock (ABS), four wheel disc	X	
Climate control	X	
Continental spare tire carrier		X
Cooling – transmission oil – external	X	
Cruise control	X	
Engine – 4.8 L SFI gas V8	X	
Headlights – automatic on/off	X	
Mirrors (exterior) – manual	X	
Power – 213 kW/285 HP	X	
Radio – in-dash AM/FM with CD player	X	
Receiver – available with upsized chassis		X
Stability program	X	
Theft deterrent system	X	
Tilt steering	X	
Tire storage – underslung at rear	X	
Tires – LT245/75R16E black wall	X	
Torque – 398 Nm/295 lb.-ft.	X	
Transmission – automatic 6-speed heavy duty	X	
Window operation – power; front doors only	X	

## Find Your Roadtrek



[www.roadtrek.com](http://www.roadtrek.com)

## Connect With Us



[facebook.com/roadtrek](https://facebook.com/roadtrek)



[twitter.com/roadtrekmh](https://twitter.com/roadtrekmh)



[youtube.com/roadtrekmotorhomes](https://youtube.com/roadtrekmotorhomes)

Roadtrek Motorhomes Inc. 100 Shirley Avenue, Kitchener, ON Canada N2B 2E1 | Toll-free: 1.888.ROADTREK (762-3873) | Phone: 519.745.0711 | Fax: 519.745.1170





*RS Adventurous*

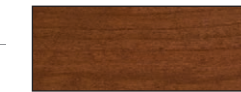
# RS Adventurous



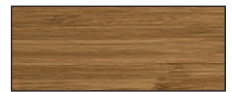
<b>Travel Capacity</b>	Seven
<b>Sleeping Capacity</b>	Four
<b>Dining</b>	Front & rear
<b>Engine</b>	3.0 L CRD V 6 turbo diesel BlueTec®
<b>Batteries</b>	Two 6 V AGM, 2,400 W
<b>Water Heater</b>	Propane with bypass, 23 L/ 6 U.S. gal., 12,000 BTU
<b>Water Capacity</b>	
<b>Fresh</b>	135 L/36 U.S. gal.
<b>Black</b>	40 L/10 U.S. gal.
<b>Gray</b>	80 L/21 U.S. gal.
<b>Tow Weight</b>	7,000 lbs. (3,200 kg)
<b>Tongue Weight</b>	750 lbs. (340 kg)
<b>RV Warranty</b>	5 year unlimited mileage/ km, RV limited warranty covering the manufacture of the motorhome only (excludes chassis)

## Interior Color Options

### Cabinetry



Cherry



Bamboo



Ebony

### Main & Accent Fabric

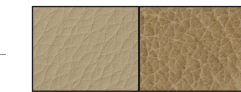


Tan

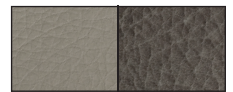


Platinum/Onyx

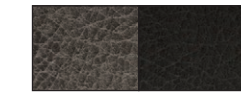
### Leather Seating



Tan



Platinum



Onyx

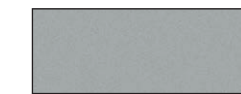
## Exterior Paint Options



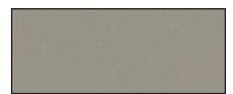
White



Midnight Black



Silver Ice



Champagne Pearl



Charcoal Gray



Ruby Red Metallic

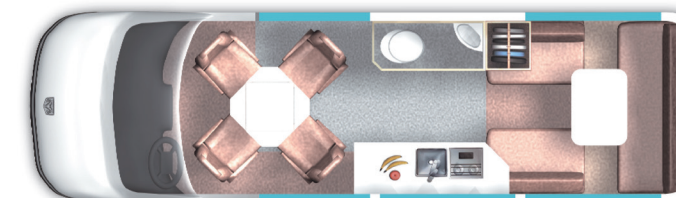
## Road trips redefined

The RS Adventurous is the perfect companion for life on the open road. The beautiful open concept design allows for up to 91 cubic feet of storage and stunning unobstructed views throughout the vehicle. Featuring an expansive galley, plush captain seats and additional seating on the cozy sofa in the rear, the RS Adventurous makes taking in the sights an enjoyable and comfortable experience for all.



## Features

- Expanded galley features a 3.6 cu. ft. refrigerator, convection microwave and abundant storage
- Automatic propane heating system
- Open concept with panoramic windows from front to rear
- Seats up to seven and sleeps up to four



# RS Adventurous

## Specifications

<b>Exterior length</b>	22' 9" (6,945 mm)
<b>Exterior width (without mirrors)</b>	6' 8" (2,025 mm)
<b>Interior aisle width</b>	28" (710 mm)
<b>Exterior height (with roof AC)</b>	9' 7" (2,920 mm)
<b>Interior standing height</b>	6' 3" (1,910 mm)
<b>Wheelbase</b>	170" (4,325 mm)
<b>Gross vehicle weight rating</b>	11,030 lbs. (5,003 kg)
<b>Occupant &amp; cargo carrying capacity*</b>	3,000 lbs. (1,350 kg)
<b>Gross combined weight rating*</b>	15,250 lbs. (6,915 kg)
<b>Towing – tow weight*</b>	7,000 lbs. (3,200 kg)
<b>Towing – tongue weight*</b>	750 lbs. (340 kg)
<b>Fuel type</b>	Diesel
<b>Fresh water capacity</b>	135 L/36 U.S. gal.
<b>Black holding tank capacity</b>	40 L/10 U.S. gal.
<b>Gray holding tank capacity</b>	80 L/21 U.S. gal.
<b>Storage capacity (with options)</b>	1,750 L/62 cu. ft. (2,570 L/91 cu. ft.)
<b>Rear king sleeping maximum (width x length)</b>	69" x 78" (1,750 mm x 1,980 mm)
<b>Rear twin bed sleeping (width x length)</b>	25" x 78" (635 mm x 1,980 mm)
<b>Front single bed (width x length)</b>	22" x 76" (560 mm x 1,930 mm) – optional feature

\* Refer to [www.roadtrek.com](http://www.roadtrek.com) for more details.

## RV Warranty

5 year unlimited mileage/km, RV limited warranty covering the manufacture of the motorhome only (excludes chassis).

## Chassis Warranty

3 year/36,000 mile or 60,000 km base limited warranty and 5 year/100,000 mile or 160,000 km limited diesel engine components warranty as offered by Mercedes. Refer to chassis manufacturers' website for details.

Roadtrek Motorhomes Inc. reserves the right to make changes at any time, without notice, in colors, materials, equipment, specifications and models. This information is intended as a guide only; please visit [www.roadtrek.com](http://www.roadtrek.com) for a complete list of specifications and options. Some motorhomes may be shown with equipment that is optional. Accessories shown in the photography are not included.

## Coach Features

	Standard	Optional
Air conditioner – 110 V, 11,000 BTU roof mount	X	
Armoire – with adjustable shelves & drawers; interchangeable with right 2 <sup>nd</sup> row seat		X
Awning – 13' 2" (4,000 mm) power awning	X	
Bathroom – permanently enclosed with sink & shower	X	
Batteries – two 6 V AGM, 2,400 W	X	
Batteries – four 6 V AGM, 4,800 W		X
Cabinet – permanent wardrobe – replaces driver side 2 <sup>nd</sup> row seat		X
Connection – external – 110 V with detachable power cord	X	
Detectors – smoke, propane & CO	X	
Furnace – propane automatic, 16,000 BTU	X	
Generator – conventional – propane with remote-start, 2.5 kW		X
Generator – under-hood	X	
Generator/alternator – engine mounted 12 V, 3,500 W		X
Home theater system with 5.1 surround sound & dual center speakers with DVD, CD, AM/FM radio, dual use rear speakers	X	
Mattress – single folding for 1 <sup>st</sup> & 2 <sup>nd</sup> row seats		X
Microwave oven – 110 V convection, 28 L/1.0 cu. ft., 1,800 W convection/1000 W microwave	X	
Monitor panel – water, propane & battery charge levels, battery disconnect & generator hour meter	X	
Power inverter – 12/110 V, 3,000 W with remote	X	
Propane tank – 60 L/16 U.S. gal., 70 lbs.	X	
Rear power sofa – fabric		X
Rear power sofa – faux leather		X
Refrigerator – 12 V/110 V compressor driven with thermostat, 3.6 cu. ft.	X	
Screen package – rear doors only		X
Sewage disposal system – 12 V macerator sewage pump	X	
Solar charging system – daylight – 240 W with charge controller		X
Storage compartments (exterior) – one below floor	X	
Stove – propane; two burner recessed with flush cover & built-in igniter	X	
TV – 22" HD flat screen on rotating bracket with remote		X
Water heater – propane with bypass, 23 L/6 U.S. gal., 12,000 BTU	X	
Water system – on demand 12 V with water pump	X	

## Chassis Features

	Standard	Optional
Airbag – driver & passenger	X	
Alternator – 14 V/220 AMP	X	
Axle – rear – 3.92 (USA) 4.18 (CAN) ratio	X	
Battery – 760 AMP	X	
Brakes – anti-lock (ABS), four wheel disc	X	
Camera – rearview backup	X	
Climate control – electronic with glove box cooler	X	
Cooling – transmission oil – external	X	
Cruise control	X	
Engine – 3.0 L CRD V6 turbo diesel BlueTec®	X	
Headlights – automatic on/off	X	
Luxury chassis OEM option package		X
Power – 140 kW/188 HP	X	
Radio – Mercedes Becker Map Pilot Navigation System with Bluetooth & on-dash keypad, audio 15 FM/AM, aux-in, USB	X	
Receiver – Class III	X	
Stability program – adaptive (accounts for load)	X	
Theft deterrent system	X	
Tilt steering	X	
Tire storage – vehicle underside between axles	X	
Tires – LT215/85R16E black wall dual rear	X	
Torque – 440 Nm/325 lb.-ft.	X	
Traction control	X	
Transmission – automatic 5-speed heavy duty	X	
Wheels – 16" aluminum polished with steel spare		X
Window operation – power; front doors only	X	
Wiring harness for towing – E40 wire harness & 7 pin connector	X	
XL Package - 18" extended chassis at rear		X

## Find Your Roadtrek



[www.roadtrek.com](http://www.roadtrek.com)

## Connect With Us



[facebook.com/roadtrek](https://facebook.com/roadtrek)



[twitter.com/roadtrekmh](https://twitter.com/roadtrekmh)



[youtube.com/roadtrekmotorhomes](https://youtube.com/roadtrekmotorhomes)

Roadtrek Motorhomes Inc. 100 Shirley Avenue, Kitchener, ON Canada N2B 2E1 | Toll-free: 1.888.ROADTREK (762-3873) | Phone: 519.745.0711 | Fax: 519.745.1170





# SS AGILE

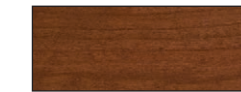
# SS AGILE



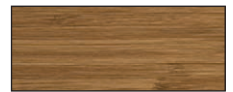
<b>Travel Capacity</b>	Five
<b>Sleeping Capacity</b>	Two
<b>Dining</b>	Front & rear
<b>Engine</b>	2.1 L CRD V4 turbo diesel BlueTec®
<b>Batteries</b>	Two 6 V AGM, 2,400 W
<b>Water Heater</b>	Propane with bypass, 23 L/6 U.S. gal., 12,000 BTU
<b>Water Capacity</b>	
<b>Fresh</b>	135 L/36 U.S. gal.
<b>Black</b>	40 L/10 U.S. gal.
<b>Gray</b>	75 L/20 U.S. gal.
<b>Tow Weight</b>	5,000 lbs. (2,268 kg)
<b>Tongue Weight</b>	500 lbs. (227 kg)
<b>RV Warranty</b>	5 year unlimited mileage/km, RV limited warranty covering the manufacture of the motorhome only (excludes chassis)

## Interior Color Options

### Cabinetry



Cherry



Bamboo



Ebony

### Main & Accent Fabric

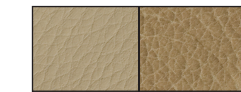


Tan

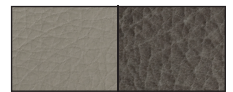


Platinum/Onyx

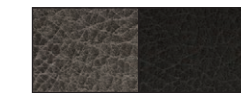
### Leather Seating



Tan



Platinum



Onyx

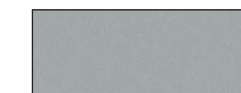
## Exterior Paint Options



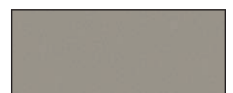
White



Midnight Black



Silver Ice



Champagne Pearl



Charcoal Gray



Ruby Red Metallic

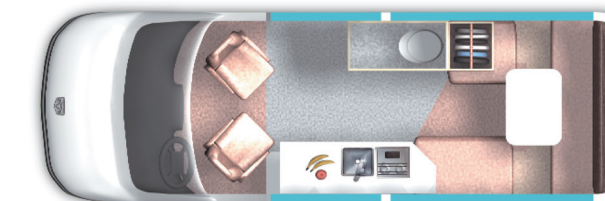
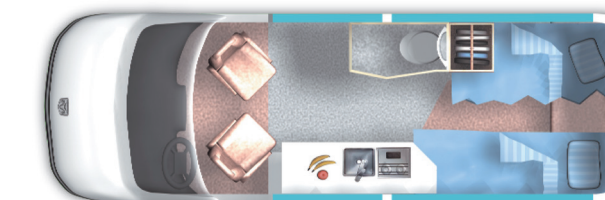
## All you need is a destination

No matter where you're driving, whether it's a long road trip across the countryside or a quick jaunt across town, the SS Agile makes every trip an adventure. Built on the renowned Mercedes-Benz Short Sprinter, the SS Agile is a great passenger vehicle with comfortable seating for five, sleeping for two, and offers all the conveniences of a fully-equipped motorhome. With great use of interior space, ease of driving and loaded with safety features, the SS Agile has you prepared for every journey, no matter the destination.



## Features

- Fully equipped galley features a 3.6 cu. ft. refrigerator, convection microwave and plenty of interior storage
- Automatic propane heating system
- Panoramic windows from front to rear
- Comfortable and spacious permanent bathroom with stand-up shower



# SS AGILE

## Specifications

Exterior length*	19' 5" (5,910 mm)
Exterior width (without mirrors)	6' 8" (2,025 mm)
Interior aisle width	28" (710 mm)
Exterior height (with roof AC)	9' 7" (2,920 mm)
Interior standing height	6' 3" (1,910 mm)
Wheelbase	144" (3,665 mm)
Gross vehicle weight rating	8,550 lbs. (3,878 kg)
Occupant & cargo carrying capacity*	1,500 lbs. (700 kg)
Gross combined weight rating*	13,550 lbs. (6,146 kg)
Towing – tow weight*	5,000 lbs. (2,268 kg)
Towing – tongue weight*	500 lbs. (227 kg)
Fuel type	Diesel
Fresh water capacity	135 L/36 U.S. gal.
Black holding tank capacity	40 L/10 U.S. gal.
Gray holding tank capacity	75 L/20 U.S. gal.
Storage capacity	1,280 L/45 cu. ft.
Rear king sleeping maximum (width x length)	69" x 76" (1,750 mm x 1,930 mm)
Rear twin bed sleeping (width x length)	25" x 76" (635 mm x 1,930 mm)

\* Refer to [www.roadtrek.com](http://www.roadtrek.com) for more details.

## RV Warranty

5 year unlimited mileage/km, RV limited warranty covering the manufacture of the motorhome only (excludes chassis).

## Chassis Warranty

3 year/36,000 mile or 60,000 km base limited warranty and 5 year/100,000 mile or 160,000 km limited diesel engine components warranty as offered by Mercedes. Refer to chassis manufacturers' website for details.

Roadtrek Motorhomes Inc. reserves the right to make changes at any time, without notice, in colors, materials, equipment, specifications and models. This information is intended as a guide only; please visit [www.roadtrek.com](http://www.roadtrek.com) for a complete list of specifications and options. Some motorhomes may be shown with equipment that is optional. Accessories shown in the photography are not included.

## Coach Features

	Standard	Optional
Air conditioner – 110 V, 11,000 BTU roof mount	X	
Awning – 9' 10" (3,000 mm) power awning	X	
Bathroom – permanently enclosed with shower	X	
Batteries – two 6 V AGM, 2,400 W	X	
Connection – external – 110 V with detachable power cord	X	
Detectors – smoke, propane & CO	X	
Furnace – propane automatic, 16,000 BTU	X	
Generator – conventional – propane with remote-start, 2.5 kW		X
Home theater system with 5.1 surround sound & dual center speakers with DVD, CD, AM/FM radio, dual use rear speakers	X	
Microwave oven – 110 V convection, 28 L/1.0 cu. ft., 1,800 W convection/1,000 W microwave	X	
Monitor panel – water, propane & battery charge levels, battery disconnect & generator hour meter	X	
Propane tank – 60 L/16 U.S. gal., 70 lbs.	X	
Rear power sofa – fabric	X	
Rear power sofa – faux leather		X
Refrigerator – 12 V/110 V compressor driven with thermostat, 3.6 cu. ft.	X	
Screen package – rear doors only		X
Sewage disposal system – 12 V macerator sewage pump	X	
Solar charging system – daylight – 300 W with charge controller		X
Stove – propane; two burner recessed with flush cover	X	
TV – 22" HD flat screen on rotating bracket with remote		X
Water heater – propane with bypass, 23 L/6 U.S. gal., 12,000 BTU	X	
Water system – on demand 12 V with water pump	X	

## Chassis Features

	Standard	Optional
Airbag – driver & passenger	X	
Alternator – 14 V/200 AMP	X	
Axle – rear – 3.92 ratio	X	
Battery – 760 AMP	X	
Brakes – anti-lock (ABS), four wheel disc	X	
Camera – rearview backup	X	
Climate control – electronic with glove box cooler	X	
Continental spare tire carrier	X	
Cooling – transmission oil – external	X	
Cruise control	X	
Engine – 2.1 L CRD V4 turbo diesel BlueTec®	X	
Headlights – automatic on/off	X	
Luxury chassis OEM option package		X
Power – 120 kW/161 HP	X	
Radio – Mercedes Becker Map Pilot Navigation System with Bluetooth & on-dash keypad, audio 15 FM/AM, aux-in, USB	X	
Receiver – Class III	X	
Stability program – adaptive (accounts for load)	X	
Theft deterrent system	X	
Tilt steering	X	
Tire storage – rear storage area	X	
Tires – LT245/75R16E black wall	X	
Torque – 359 Nm/265 lb.-ft.	X	
Traction control	X	
Transmission – automatic 7-speed heavy duty	X	
Wheels – 16" aluminum polished with spare		X
Window operation – power; front doors only	X	
Wiring harness for towing – E40 wire harness & 7 pin connector	X	

## Find Your Roadtrek



[www.roadtrek.com](http://www.roadtrek.com)

## Connect With Us



[facebook.com/roadtrek](https://facebook.com/roadtrek)



[twitter.com/roadtrekmh](https://twitter.com/roadtrekmh)



[youtube.com/roadtrekmotorhomes](https://youtube.com/roadtrekmotorhomes)



Your destination awaits

Roadtrek Motorhomes Inc. 100 Shirley Avenue, Kitchener, ON Canada N2B 2E1 | Toll-free: 1.888.ROADTREK (762-3873) | Phone: 519.745.0711 | Fax: 519.745.1170





*TS Adventurous*

# TS Adventurous



<b>Travel Capacity</b>	Seven
<b>Sleeping Capacity</b>	Four
<b>Dining</b>	Front & rear
<b>Engine</b>	3.0 L CRD V6 turbo diesel BlueTec®
<b>Batteries</b>	Four 6 V AGM, 4,800 W
<b>Water Heater</b>	Engine heat/110 V/12 V/ propane, 11 L/3 U.S. gal., 18,700 BTU
<b>Water Capacity</b>	
<b>Fresh</b>	125 L/33 U.S. gal.
<b>Black</b>	40 L/10 U.S. gal.
<b>Gray</b>	80 L/21 U.S. gal.
<b>Tow Weight</b>	7,000 lbs. (3,200 kg)
<b>Tongue Weight</b>	750 lbs. (340 kg)
<b>RV Warranty</b>	5 year unlimited mileage/ km, RV limited warranty covering the manufacture of the motorhome only (excludes chassis)

## Interior Color Options

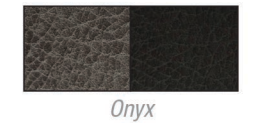
### Cabinetry



### Main & Accent Fabric



### Leather Seating



## Exterior Paint Options



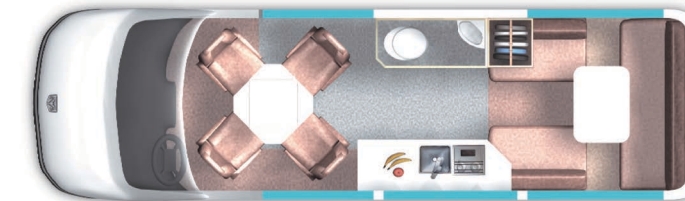
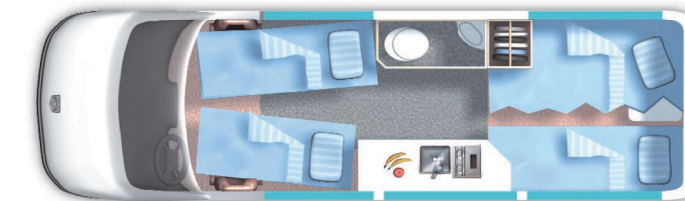
## A journey like no other

Luxury meets serenity in the beautifully crafted and feature laden TS Adventurous. Loaded with all the comforts you will ever need to tour around the countryside, the TS Adventurous offers a new stylish charcoal interior crafted with chrome accents, a top-of-the-line galley with true granite countertops, and the comfort and warmth of heated floors. Large panoramic windows, comfortable seating for up to seven, and a state of the art electronic package will leave you never wanting to return home.



## Features

- Innovative and interactive Coach-Connect™ monitoring system (optional)
- Expanded galley features a 3.6 cu. ft. refrigerator, microwave, induction cooktop, and on demand hot water
- Large 11,500 BTU air conditioner
- Power awning with integrated lighting



# TS Adventurous

## Specifications

<b>Exterior length</b>	22' 9" (6,945 mm)
<b>Exterior width (without mirrors)</b>	6' 7" (2,007 mm)
<b>Interior aisle width</b>	27" (686 mm)
<b>Exterior height (with roof AC)</b>	9' 7" (2,920 mm)
<b>Interior standing height</b>	6' 2" (1,880 mm)
<b>Wheelbase</b>	170" (4,325 mm)
<b>Gross vehicle weight rating</b>	11,030 lbs. (5,003 kg)
<b>Occupant &amp; cargo carrying capacity*</b>	3,000 lbs. (1,350 kg)
<b>Gross combined weight rating*</b>	15,250 lbs. (6,915 kg)
<b>Towing – tow weight*</b>	7,000 lbs. (3,200 kg)
<b>Towing – tongue weight*</b>	750 lbs. (340 kg)
<b>Fuel type</b>	Diesel
<b>Fresh water capacity</b>	125 L/33 U.S. gal.
<b>Black holding tank capacity</b>	40 L/10 U.S. gal.
<b>Gray holding tank capacity</b>	80 L/21 U.S. gal.
<b>Storage capacity</b>	1,727 L/61 cu. ft.
<b>Rear king sleeping maximum (width x length)</b>	69" x 78" (1,750 mm x 1,980 mm)
<b>Rear twin bed sleeping (width x length)</b>	25" x 78" (635 mm x 1,980 mm)
<b>Front single bed (width x length)</b>	22" x 76" (560 mm x 1,930 mm) – optional feature

\* Refer to [www.roadtrek.com](http://www.roadtrek.com) for more details.

## RV Warranty

5 year unlimited mileage/km, RV limited warranty covering the manufacture of the motorhome only (excludes chassis).

## Chassis Warranty

3 year/36,000 mile or 60,000 km base limited warranty and 5 year/100,000 mile or 160,000 km limited diesel engine components warranty as offered by Mercedes. Refer to chassis manufacturers' website for details.

Roadtrek Motorhomes Inc. reserves the right to make changes at any time, without notice, in colors, materials, equipment, specifications and models. This information is intended as a guide only; please visit [www.roadtrek.com](http://www.roadtrek.com) for a complete list of specifications and options. Some motorhomes may be shown with equipment that is optional. Accessories shown in the photography are not included.

## Coach Features

	Standard	Optional
Air conditioner – 110 V, 11,500 BTU roof mount	X	
Awning – 13' 2" (4,000 mm) power awning with integrated lighting	X	
Bathroom – permanently enclosed with sink & shower	X	
Batteries – four 6 V AGM, 4,800 W	X	
Cabinet – permanent – replaces driver side 2 <sup>nd</sup> row seat		X
Coach-Connect™ monitoring system		X
Connection – external – 110 V with detachable power cord	X	
Detectors – smoke, propane & CO	X	
Furnace – engine heat/110 V/12 V/propane in-floor radiant heating, 18,700 BTU	X	
Generator – under-hood	X	
Home theater system with sound bar speakers and DVD player	X	
Instant hot water – on demand 3.4 L/0.09 U.S. gal., 110 V	X	
Lighting - LED strip lighting	X	
Mattress – single folding for 1 <sup>st</sup> & 2 <sup>nd</sup> row seats		X
Microwave oven – 110 V pull-out drawer style		X
Power inverter – 12/110 V, 2,500 W minimum	X	
Propane tank – 60 L/16 U.S. gal./70 lbs.	X	
Rear power sofa with faux leather	X	
Refrigerator – 12 V/110 V compressor driven with thermostat, 3.6 cu. ft.	X	
Screen package – rear doors		X
Seats - two 2 <sup>nd</sup> row captain seats	X	
Sewage disposal system – 12 V macerator sewage pump	X	
Solar charging system – daylight – 240 W with charge controller	X	
E-trek package - four additional 6 V AGM deep cycle auxiliary batteries (4,800 W), solar charging system (240 W), 3,500 W under-hood generator, upgraded 6 year warranty		X
Stove – 110 V flush-mounted one burner inductive cooktop	X	
TV – 22" HD flat screen on rotating bracket with remote		X
Water heater – engine heat/110 V/ 12 V/propane, 11 L/3 U.S. gal., 18,700 BTU	X	
Water system – on demand 12 V with water pump	X	
Windows - tinted - front driver side, front passenger side & rear		X

## Chassis Features

	Standard	Optional
Airbag – driver & passenger	X	
Alternator – 14 V/220 AMP	X	
Axle – rear – 3.92 (USA) 4.18 (CAN) ratio	X	
Battery – 760 AMP	X	
Brakes – anti-lock (ABS), four wheel disc	X	
Camera – rearview backup	X	
Climate control – electronic with glove box cooler	X	
Cooling – transmission oil – external	X	
Cruise control	X	
Engine – 3.0 L CRD V6 turbo diesel BlueTec®	X	
Headlights – automatic on/off, Bi-xenon headlamps with U.S. headlamp washing system	X	
Luxury chassis OEM option package	X	
Mirrors (exterior) – power, heated with auxiliary parabolic	X	
Power – 140 kW/188 HP	X	
Radio – Mercedes Becker Map Pilot Navigation System with Bluetooth & on-dash keypad, audio 15 FM/AM, aux-in, USB	X	
Receiver – Class III with 7,500 lbs. capacity	X	
Stability program – adaptive (accounts for load)	X	
Suspension package - stabilizer, rear axle, under frame; stabilizer reinforced at front axle, springs & dampers, front reinforced	X	
Theft deterrent system	X	
Tilt steering	X	
Tire storage – vehicle underside between axles	X	
Tires – LT215/85R16E black wall dual rear	X	
Torque – 440 Nm/325 lb.-ft.	X	
Traction control	X	
Transmission – automatic 5-speed heavy duty	X	
Wheels – 16" aluminum polished with steel spare		X
Window operation – power; front doors only	X	
Wiring harness for towing – E40 wire harness & 7 pin connector	X	
XL Package - 18" extended chassis at rear		X

## Find Your Roadtrek



## Connect With Us



Roadtrek Motorhomes Inc. 100 Shirley Avenue, Kitchener, ON Canada N2B 2E1 | Toll-free: 1.888.ROADTREK (762-3873) | Phone: 519.745.0711 | Fax: 519.745.1170

