

**CRUISER**  
**AIRE**



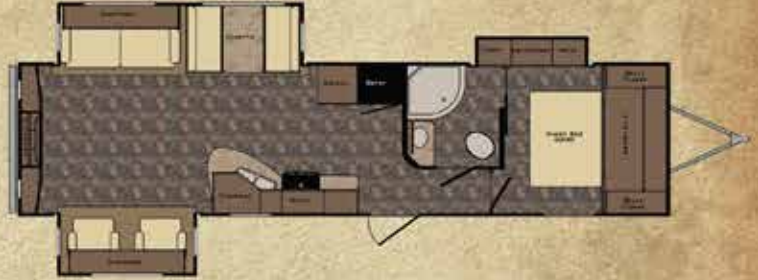
**CRUISER**  
**AIRE**

# CRUISER AIRE

CAT29BH



CAT31RE



CAT32BH



CAT33RE



CAF28SE Bedroom



Kitchen and Entertainment Center in a CAF28SE

CRUISER AIRE	CAT29BH	CAT31RE	CAT32BH	CAT33RE	CAF27RL	CAF28RK	CAF28SE	CAF29BH	CAF29RS	CAF30BH
SHIPPING WEIGHT	6927	8059	8037	8283	7819	8381	8431	8945	8987	8515
GVWR	10842	10986	10984	11064	11178	11772	11740	11986	11988	11726
CARRYING CAP	3915	2927	2947	2781	3359	3391	3309	3041	3001	3211
HITCH WEIGHT	682	826	824	904	1018	1612	1580	1826	1828	1566
AXLE WEIGHT	6245	7233	7213	7379	6801	6769	6851	7119	7159	6949
EXT LENGTH	32' 4"	35' 11"	35' 11"	36' 6"	29' 11"	31' 11"	30' 11"	32' 11"	32' 11"	33' 11"
EXT. HEIGHT W/AC	11' 2'	11' 2"	11' 2"	11' 2"	12' 0"	11' 10"	11' 10"	11' 10"	11' 10"	12' 0"
FRESH WATER	56	56	56	56	56	56	56	56	56	56
BLACK WATER	40	40	40	40	40	40	40	40	40	40
GRAY	80	80	80	40	40	80	40	40	40	80
TIRE SIZE	225/75R15D	225/75R15D	225/75R15D	225/75R15D	225/75R15D	225/75R15D	225/75R15D	225/75R15D	225/75R15D	225/75R15D

# FLOOR PLANS

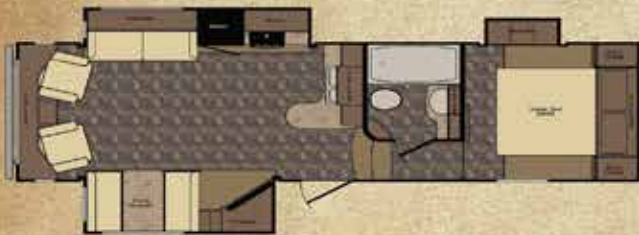
CAF27RL



CAF28RK



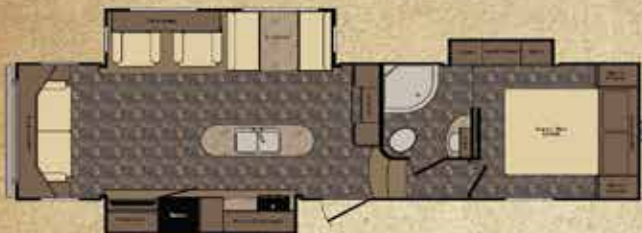
CAF28SE



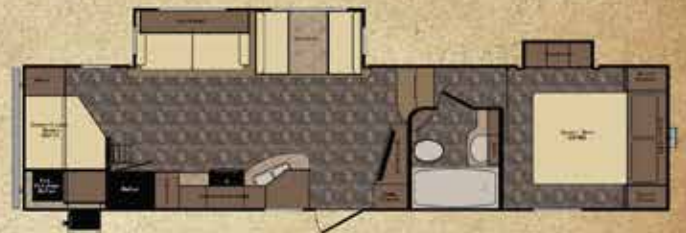
CAF29BH



CAF29RS



CAF30BH



Hutch in a CAF29RS



Living Area in a CAF29RS in the Cappuccino Decor

DISCLAIMER: Product information is as accurate as possible at the date of publication of this brochure. All features, floorplans, and specifications in this brochure are subject to change without notice. Please also consult CrossRoads RV's website at [www.crossroadsrv.com](http://www.crossroadsrv.com) for more current product information and specifications. Tow Vehicle Disclaimer: CAUTION: Owners of CrossRoads RV recreational vehicles are solely responsible for the selection and proper use of tow vehicles. All customers should consult with a motor vehicle manufacturer or their dealer concerning the proper use of any tow vehicles for CrossRoads RV products. CrossRoads RV disclaims any liability or damages suffered as a result of the selection, operation, use or misuse of tow vehicles. BUYER READY: RV LIMITED WARRANTY DOES NOT COVER DAMAGE TO THE RECREATIONAL VEHICLE OR TOW VEHICLE AS A RESULT OF THE SELECTION, OPERATION, USE OR MISUSE OF THE TOW VEHICLE.

# STANDARDS &

## STANDARDS

### EXTERIOR

- \*High gloss laminated sidewalls
- \*5-sided Aluma frame construction
- \*Aerodynamic front cap with LED accent lights
- \*One-piece seamless rubber roof covering
- \*Radius roof line
- \*Domed roof line (front to back-TT)
- \*Total Truss roof system
- \*30" x 72" main entry door
- \*Lighted triple entry step
- \*Extendable grab handle at main entry
- \*EZ lube axles
- \*Trail air equa-flex suspension
- \*Nitrogen filled radial tires
- \*Galvanized wheel well
- \*Outside kitchen (VBM)
- \*Super-Stor pass-through basement storage (FW)

- \*Manual slide override extends through frame for easy access
- \*Dura-Cam I beam frame
- \*Exterior marine grade speakers (2)
- \*LP cover (TT)
- \*Battery disconnect (FW)
- \*ABS Enclosed underbelly
- \*Forced heat to underbelly
- \*Black tank flush
- \*Quick recovery 6gal G/E DSI water heater (17.8 gal/hr)
- \*Outside shower
- \*30amp detachable power service
- \*Cable/SAT prep
- \*Digital TV antenna
- \*Stabilizer jacks
- \*Outside grill prep
- \*Roof ladder
- \*Metal slam latch pass-through baggage doors

### INTERIOR

- \*LED lights through out interior
- \*Lumber core screwed stile cabinetry construction
- \*Raised panel cabinetry throughout
- \*70-lb steel ball bearing guides, full extension
- \*Solid wood drawer construction
- \*Hardwood mullion style fridge front
- \*Decorative dinette light
- \*40" booth dinette (VBM)
- \*U-dinette with snap up table (VBM)
- \*Plywood dinette base
- \*Self igniting 22" oven with 3-burner cook top
- \*Range cover
- \*Knife rack
- \*Adjustable pantry shelving
- \*High definition laminate countertops
- \*High rise kitchen faucet



CAT29RS Kitchen with Optional Solid Surface Counter Top



Outdoor Kitchen on a CAT32BH

# OPTIONS

- \*Stainless steel kitchen sink w/sink cover
- \*Charging station
- \*Maximum lino
- \*Tri-Fold hide-a-bed sofa
- \*Swivel rocker chairs (VBM)
- \*Slideout sidewall light (VBM)
- \*OHC above sofa/chairs in slideout
- \*Decorative slide fascias
- \*Water heater by-pass kit
- \*EZ winterization kit
- \*Backlit command center for switches
- \*65amp converter with distribution center
- \*12-volt bath power vent
- \*Bath skylight
- \*Built medicine cabinet
- \*Glass tub/shower enclosure
- \*Deluxe bedding package
- \*Full trunk under bed storage
- \*Bed base with strut assist
- \*Spacious bedroom closets

- \*Fire extinguisher
- \*LP/CO2 detector
- \*Smoke detector

## SELECT PACKAGE (MANDATORY)

- \*8 cu ft refer
- \*12v Multi-media sound system w/Bluetooth
- \*Black Label furniture
- \*Deluxe soft pull roller shades
- \*Dark tinted safety glass windows
- \*Glazed maple cabinetry
- \*Dual 30# lb tanks w/auto changeover
- \*Porcelain toilet with foot flush
- \*32" TV in living area
- \*Microwave
- \*35,000 BTU furnace
- \*15K ducted air system with quick cool
- \*Spare tire

- \*Thermotec insulation package
- \*Aluminum rims
- \*Vetro high gloss sidewalls
- \*Electric awning with LED light
- \*Correct track alignment system
- \*i-Cool mattress (60"X80")
- \*Rear hitch receiver
- \*Electric rear jacks (FW)
- \*Electric tongue jack (TT)
- \*Electric stab jacks (TT)

## OPTIONS

- \*Bumper mount grill
- \*Insulated windows
- \*50amp service with 2nd A/C Prep
- \*2<sup>nd</sup> A/C (low-profile 13.5) requires 50amp w/ 2nd A/C prep
- \*Recliners ILO swivel rockers (VBM)
- \*Free standing table and chairs
- \*Solid surface countertops



Bunks in a CAT32BH



CAT32BH Bunk Room