

PALOMINO

SOLAIRE



PURE MICHIGAN®

197 X IN GREYSTONE



SOLAIRE EXPANDABLES

Welcome to the Solaire Expandables. We've engineered these trailers to have the perfect mixture between light-weight aluminum construction, including the full welded aluminum frame and laminated full walk on barreled roof, and a high quality design which will make your investment enjoyable for years to come.

SOLAIRE ULTRA LITES

The Ultra Lite trailers approach the light-weight class with special emphasis on towability and visibility. While our trailers come in 7' and 8' wide models, our special 7' wide trailers allow you to have greater visibility while towing, they fit in normal parking spots, and give you a greater margin of error when backing your unit into the campground. Matched with the EquaFlex suspension axle and you have a very smooth towing experience compared to other competitor's products.

267 BHSK IN CAFE



312 TSQBK IN GREYSTONE



SOLAIRE
ECLIPSE

We've taken extra consideration in designing and developing the Solaire Eclipse. Each interior is elegantly designed with tasteful amenities, which includes upscale Congoleum® wood grain flooring. Turning our attention to the exterior, we redesigned the front cap with perimeter LED lights, and finished the trailer with a smooth fiberglass pearl finish, which will make keeping your beautiful trailer clean easy.



20 RBS IN GREYSTONE



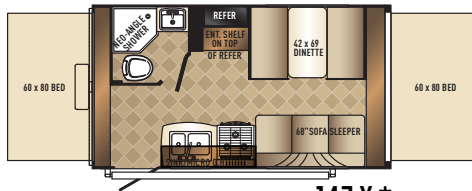
197 X IN GREYSTONE



SOLAIRE

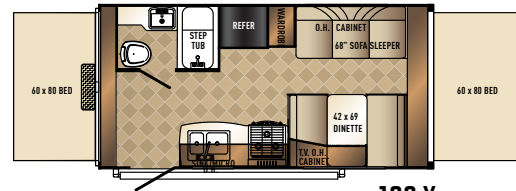
EXPANDABLES





147 X*

Hitch Dry Weight	315 LBS	Exterior Width	8'
Dry Axle Weight	2720 LBS	Travel Length	18'4"
Total Dry Weight	3011 LBS	Fresh Water Capacity	32 GAL
GVWR	3815 LBS	Gray Water Capacity	30 GAL
Interior Height	6'8"	Black Water Capacity	30 GAL
Exterior Height *	10'10"	Cargo Carrying Capacity	746 LBS



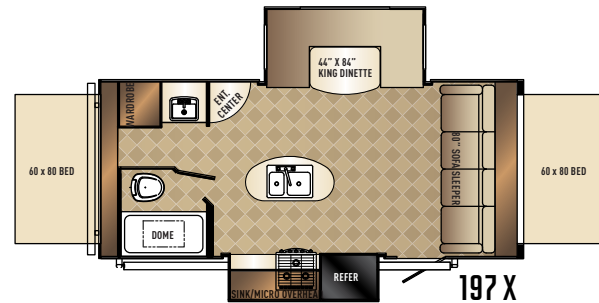
163 X

Hitch Dry Weight	400 LBS	Exterior Width	8'
Dry Axle Weight	3060 LBS	Travel Length	20'2"
Total Dry Weight	3392 LBS	Fresh Water Capacity	32 GAL
GVWR	7400 LBS	Gray Water Capacity	30 GAL
Interior Height	6'8"	Black Water Capacity	30 GAL
Exterior Height *	10'10"	Cargo Carrying Capacity	3906 LBS



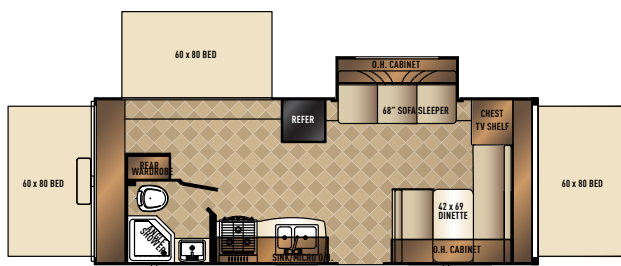
190 X

Hitch Dry Weight	620 LBS.	Exterior Width	8'
Dry Axle Weight	3990 LBS.	Travel Length	22'11"
Total Dry Weight	4622 LBS.	Fresh Water Capacity	32 GALS
GVWR	7620 LBS.	Gray Water Capacity	30 GALS
Interior Height	6'8"	Black Water Capacity	30 GALS
Exterior Height *	10'10"	Cargo Carrying Capacity	2976 LBS.



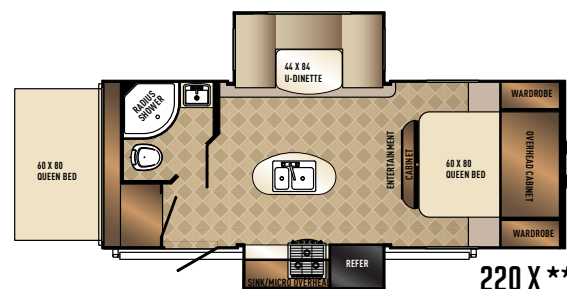
197 X

Hitch Dry Weight	600 LBS.	Exterior Width	8'
Dry Axle Weight	4085 LBS.	Travel Length	23'9"
Total Dry Weight	4645 LBS.	Fresh Water Capacity	32 GALS.
GVWR	7600 LBS.	Gray Water Capacity	30 GALS.
Interior Height	6'8"	Black Water Capacity	38 GALS.
Exterior Height *	10'10"	Cargo Carrying Capacity	2881 LBS.



213 X

Hitch Dry Weight	605 LBS.	Exterior Width	8'
Dry Axle Weight	3675 LBS.	Travel Length	25'2"
Total Dry Weight	4280 LBS.	Fresh Water Capacity	32 GALS
GVWR	7605 LBS.	Gray Water Capacity	30 GALS
Interior Height	6'8"	Black Water Capacity	30 GALS
Exterior Height *	10'10"	Cargo Carrying Capacity	3291 LBS.



220 X**

Hitch Dry Weight	610 LBS.	Exterior Width	8'
Dry Axle Weight	4325 LBS.	Travel Length	25'6"
Total Dry Weight	4901 LBS.	Fresh Water Capacity	32 GALS
GVWR	7610 LBS.	Gray Water Capacity	68 GALS
Interior Height	6'6"	Black Water Capacity	30 GALS
Exterior Height *	10'10"	Cargo Carrying Capacity	2641 LBS.

* 147 X SINGLE AXLE WITH 5 CU. FT. REFRIGERATOR AND NO DUCTED A/C. ** 220 X, INCLUDES 3/4 FRONT CAP

267 BHSK IN CAFE



SOLAIRE

ULTRA LITE





Pass thru storage with LED lighting

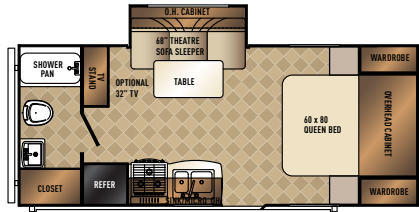
20 RBS IN GREYSTONE



The entertainment center has been recently redesigned to include more storage space than before. In the photo above it is featured with our special Persian walnut lumber core cabinetry.

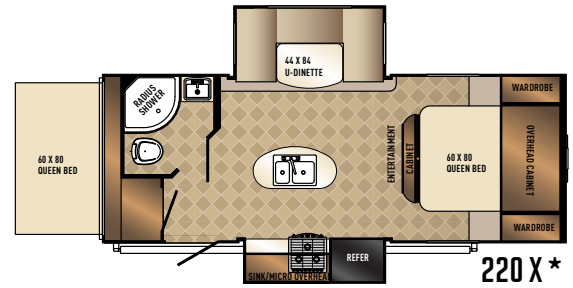


8' WIDE FLOORPLANS



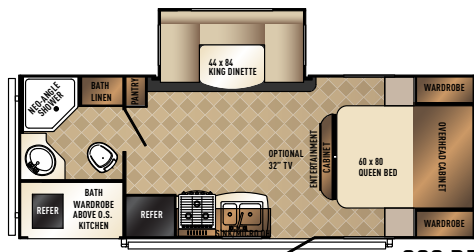
201 SS

Hitch Dry Weight	460 LBS.	Travel Length	23'6"
Dry Axle Weight	3390 LBS.	Fresh Water Capacity	32 GALS.
Total Dry Weight	3850 LBS.	Gray Water Capacity	38 GALS.
GVWR	7460 LBS.	Black Water Capacity	30 GALS.
Interior Height	6'8"	Cargo Carrying Capacity	3576 LBS.
Exterior Height	10'10"	Exterior Width	8'



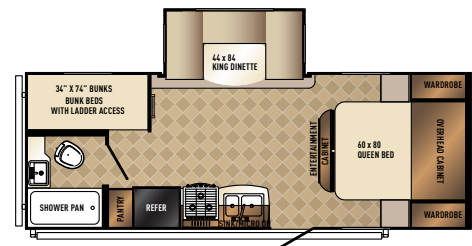
220 X*

Hitch Dry Weight	610 LBS.	Exterior Width	8'
Dry Axle Weight	4325 LBS.	Travel Length	25'6"
Total Dry Weight	4901 LBS.	Fresh Water Capacity	32 GALS.
GVWR	7610 LBS.	Gray Water Capacity	68 GALS.
Interior Height	6'6"	Black Water Capacity	38 GALS.
Exterior Height*	10'10"	Cargo Carrying Capacity	2641 LBS.



226 RBK

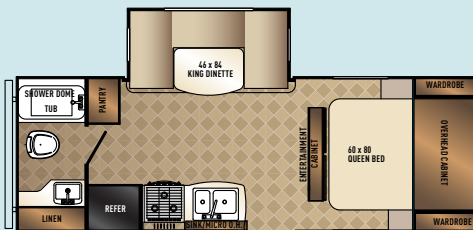
Hitch Dry Weight	710 LBS.	Travel Length	25'10"
Dry Axle Weight	4305 LBS.	Fresh Water Capacity	32 GALS.
Total Dry Weight	5015 LBS.	Gray Water Capacity	68 GALS.
GVWR	7710 LBS.	Black Water Capacity	38 GALS.
Interior Height	6'8"	Cargo Carrying Capacity	2661 LBS.
Exterior Height	10'10"	Exterior Width	8'



229 BHS

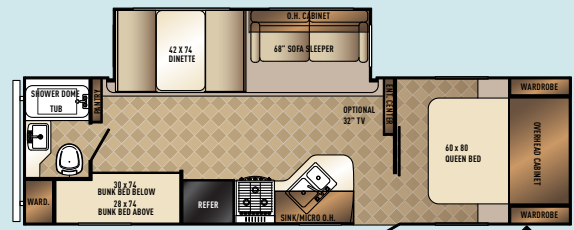
Hitch Dry Weight	730 LBS.	Travel Length	26'1"
Dry Axle Weight	3985 LBS.	Fresh Water Capacity	32 GALS.
Total Dry Weight	4715 LBS.	Gray Water Capacity	68 GALS.
GVWR	7730 LBS.	Black Water Capacity	38 GALS.
Interior Height	6'8"	Cargo Carrying Capacity	2981 LBS.
Exterior Height	10'10"	Exterior Width	8'

7' WIDE FLOORPLANS



20 RBS

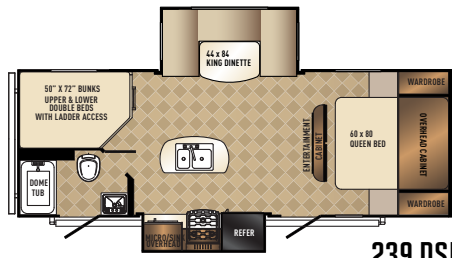
Hitch Dry Weight	650 LBS.	Travel Length	24'5"
Dry Axle Weight	3700 LBS.	Fresh Water Capacity	32 GALS.
Total Dry Weight	4350 LBS.	Gray Water Capacity	30 GALS.
GVWR	7650 LBS.	Black Water Capacity	30 GALS.
Interior Height	6'6"	Cargo Carrying Capacity	3266 LBS.
Exterior Height	10'8"	Exterior Width	7'



25 BHSS

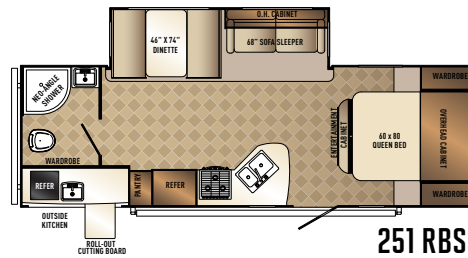
Hitch Dry Weight	545 LBS.	Travel Length	29'5"
Dry Axle Weight	4220 LBS.	Fresh Water Capacity	32 GALS.
Total Dry Weight	4690 LBS.	Gray Water Capacity	60 GALS.
GVWR	7545 LBS.	Black Water Capacity	30 GALS.
Interior Height	6'6"	Cargo Carrying Capacity	2746 LBS.
Exterior Height	10'8"	Exterior Width	7'

* 220 X, *INCLUDES TORSION AXLE



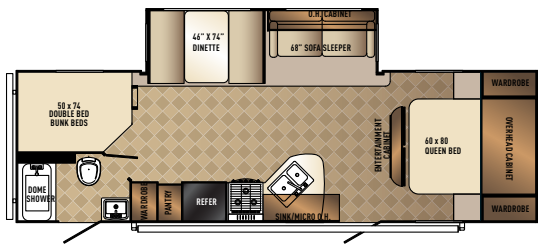
239 DSBH

Hitch Dry Weight	800 LBS.	Travel Length	27'1"
Dry Axle Weight	4590 LBS.	Fresh Water Capacity	32 GALS.
Total Dry Weight	5390 LBS.	Gray Water Capacity	68 GALS.
GVWR	7800 LBS.	Black Water Capacity	38 GALS.
Interior Height	6'8"	Cargo Carrying Capacity	2376 LBS
Exterior Height	10'10"	Exterior Width	8'



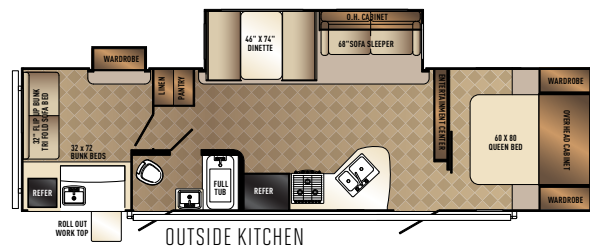
251 RBSS

Hitch Dry Weight	520 LBS.	Travel Length	29'3"
Dry Axle Weight	4930 LBS.	Fresh Water Capacity	32 GALS.
Total Dry Weight	5450 LBS.	Gray Water Capacity	76 GALS.
GVWR	7520 LBS.	Black Water Capacity	38 GALS.
Interior Height	6'8"	Cargo Carrying Capacity	2036
Exterior Height	10'10"	Exterior Width	8'



267 BHSK

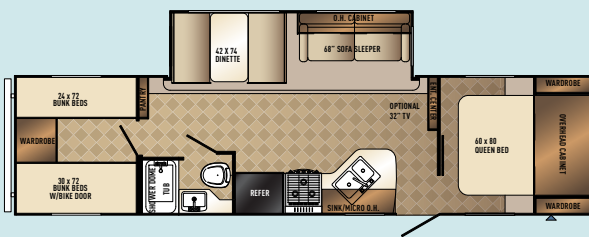
Hitch Dry Weight	885 LBS.	Travel Length	30'11"
Dry Axle Weight	4475 LBS.	Fresh Water Capacity	32 GALS.
Total Dry Weight	5360 LBS.	Gray Water Capacity	76 GALS.
GVWR	7885 LBS.	Black Water Capacity	38 GALS.
Interior Height	6'8"	Cargo Carrying Capacity	2491 LBS.
Exterior Height	10'10"	Exterior Width	8'



313 BHSS *

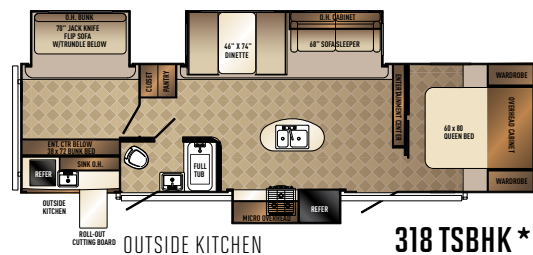
Hitch Dry Weight	890 LBS.	Travel Length	35'1"
Dry Axle Weight	5475 LBS.	Fresh Water Capacity	32 GALS.
Total Dry Weight	6365 LBS.	Gray Water Capacity	38 GALS.
GVWR	8890 LBS.	Black Water Capacity	38 GALS.*
Interior Height	6'8"	Cargo Carrying Capacity	2491 LBS.
Exterior Height	10'10"	Exterior Width	8'

* OUTSIDE KITCHEN DRAINS INTO BLACK TANK



28 QBSS

Hitch Dry Weight	610 LBS.	Travel Length	32'6"
Dry Axle Weight	4390 LBS.	Fresh Water Capacity	32 GALS.
Total Dry Weight	4990 LBS.	Gray Water Capacity	60 GALS.
GVWR	7610 LBS.	Black Water Capacity	30 GALS.
Interior Height	6'6"	Cargo Carrying Capacity	2576 LBS.
Exterior Height	10'8"	Exterior Width	7'



318 TSBHK *

Hitch Dry Weight	890 LBS.	Travel Length	35'4"
Dry Axle Weight	6235 LBS.	Fresh Water Capacity	32 GALS.
Total Dry Weight	7125 LBS.	Gray Water Capacity	38 GALS.
GVWR	8890 LBS.	Black Water Capacity	38 GALS.
Interior Height	6'8"	Cargo Carrying Capacity	1731 LBS.
Exterior Height	10'10"	Exterior Width	8'

* OUTSIDE KITCHEN DRAINS INTO BLACK TANK

312 TSQBK IN GREYSTONE



SOLAIRE

ECLIPSE





Café



Greystone



Outside kitchen

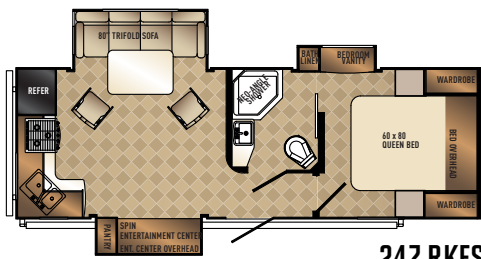
ECLIPSE FEATURES

1. Fiberglass Front Cap w/ LED Lights and Line X® Rock Guard
2. Power Stabilizer Jack Pack (Includes Electric Tongue Hitch)
3. Frameless Windows
4. Serta® Trump Metropolitan Mattress
5. Solid Surface Countertops
6. Aluminum Wheels
7. Water Tank Heaters



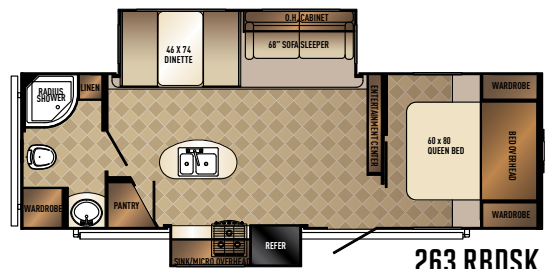
Magnetic door latch

* OUTSIDE KITCHEN DRAINS INTO BLACK WATER TANK



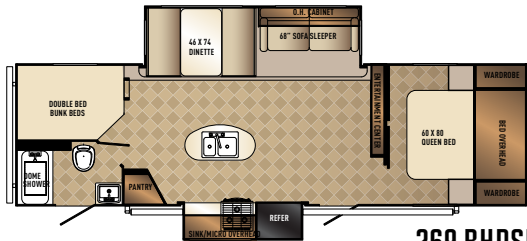
247 RKES

Hitch Dry Weight	590 LBS.	Travel Length	27'10"
Dry Axle Weight	5320 LBS.	Fresh Water Capacity	32 GALS.
Total Dry Weight	5910 LBS.	Gray Water Capacity	76 GALS.
GVWR	8590 LBS.	Black Water Capacity	38 GALS.
Interior Height	6'8"	Cargo Carrying Capacity	2646 LBS.
Exterior Height	10'10"	Exterior Width	8'



263 RBDSK

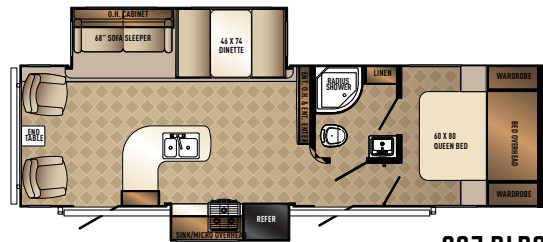
Hitch Dry Weight	790 LBS.	Travel Length	30'0"
Dry Axle Weight	5420 LBS.	Fresh Water Capacity	32 GALS.
Total Dry Weight	6210 LBS.	Gray Water Capacity	68 GALS.
GVWR	7790 LBS.	Black Water Capacity	38 GALS.
Interior Height	6'8"	Cargo Carrying Capacity	1546 LBS.
Exterior Height	10'10"	Exterior Width	8'



269 BHDSK

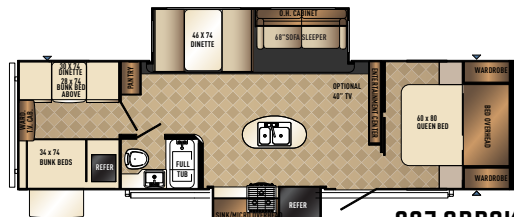
OUTSIDE KITCHEN

Hitch Dry Weight	955 LBS.	Travel Length	32'3"
Dry Axle Weight	4900 LBS.	Fresh Water Capacity	32 GALS.
Total Dry Weight	5855 LBS.	Gray Water Capacity	76 GALS.
GVWR	8955 LBS.	Black Water Capacity	38 GALS.
Interior Height	6'8"	Cargo Carrying Capacity	3066 LBS.
Exterior Height	10'10"	Exterior Width	8'



297 RLDS

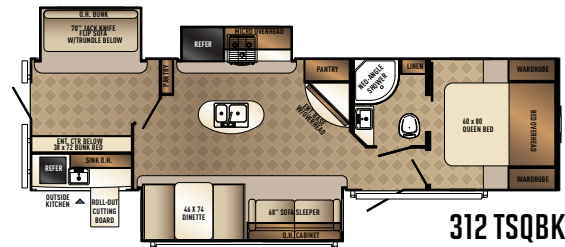
Hitch Dry Weight	615 LBS.	Travel Length	32'9"
Dry Axle Weight	5520 LBS.	Fresh Water Capacity	32 GALS.
Total Dry Weight	6135 LBS.	Gray Water Capacity	68 GALS.
GVWR	8615 LBS.	Black Water Capacity	38 GALS.
Interior Height	6'8"	Cargo Carrying Capacity	2446 LBS.
Exterior Height	10'10"	Exterior Width	8'



307 QBDSK

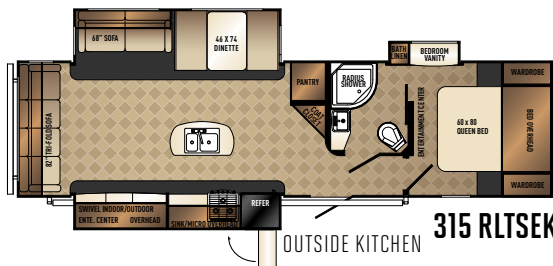
OUTSIDE KITCHEN

Hitch Dry Weight	835 LBS.	Travel Length	33'11"
Dry Axle Weight	5535 LBS.	Fresh Water Capacity	32 GALS.
Total Dry Weight	6370 LBS.	Gray Water Capacity	30 GALS.
GVWR	8835 LBS.	Black Water Capacity	38 GALS.*
Interior Height	6'8"	Cargo Carrying Capacity	2431 LBS.
Exterior Height	10'10"	Exterior Width	8'



312 TSQBK

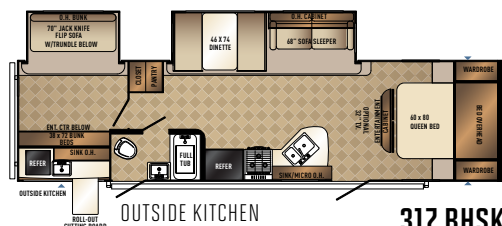
Hitch Dry Weight	805 LBS.	Travel Length	35'1"
Dry Axle Weight	7055 LBS.	Fresh Water Capacity	32 GALS.
Total Dry Weight	7860 LBS.	Gray Water Capacity	106 GALS.
GVWR	8805 LBS.	Black Water Capacity	30 GALS.
Interior Height	6'8"	Cargo Carrying Capacity	911 LBS.
Exterior Height	9'3"	Exterior Width	8'



315 RLTSK

OUTSIDE KITCHEN

Hitch Dry Weight	815 LBS.	Travel Length	35'4"
Dry Axle Weight	6220 LBS.	Fresh Water Capacity	32 GALS.
Total Dry Weight	7035 LBS.	Gray Water Capacity	60 GALS.
GVWR	8815 LBS.	Black Water Capacity	38 GALS.
Interior Height	6'8"	Cargo Carrying Capacity	1746 LBS.
Exterior Height	10'10"	Exterior Width	8'



317 BHSK

Hitch Dry Weight	625 LBS.	Travel Length	35'1"
Dry Axle Weight	6445 LBS.	Fresh Water Capacity	32 GALS.
Total Dry Weight	7070 LBS.	Gray Water Capacity	38 GALS.
GVWR	8625 LBS.	Black Water Capacity	38 GALS.*
Interior Height	6'8"	Cargo Carrying Capacity	1521 LBS.
Exterior Height	10'10"	Exterior Width	8'

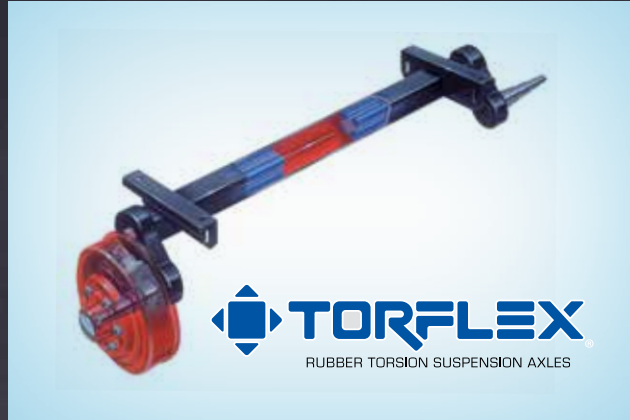
* OUTSIDE KITCHEN DRAINS INTO BLACK WATER TANK

SOLAIRE

POPULAR FEATURES



Solid surface exterior kitchen counter tops standard on available floorplans for added durability in all climate conditions.



Solaires include a standard torsion axle with independent wheel suspension (N/A on Sevens) and includes rubber cushioning to eliminate the metal on metal contact.



Optional Serta Trump® Mattress upgrade – provides a restful sleep with the most advanced 900 coil support system. The superior quality of the Serta Trump® helps provide the luxuries of home in your R.V.



The electric awning with self-contained LED light strip provides quick and easy set-up.



LED interior lighting provides:

- 80% less power
- Emits less heat
- LED's last 30,000 hours vs. 1,000 hours of halogen
- COB (chip on board) is the latest technology in LED lighting
- COB's and bulbs are both 3200k, for consistent appearance throughout



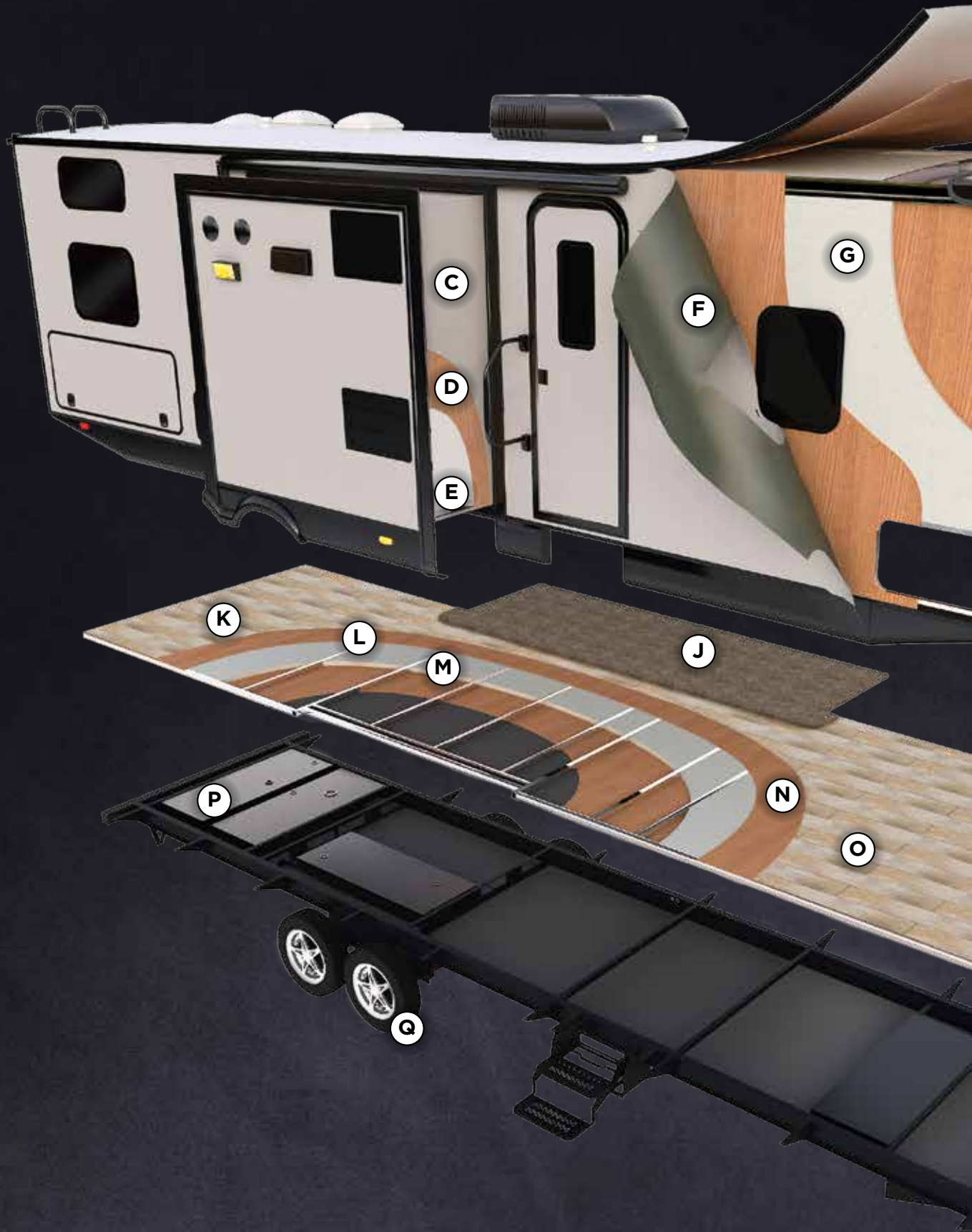
VACUUM-BONDED LAMINATED CONSTRUCTION

Solaire provides a fully 6 sided vacuum-bonded trailer. Our walls, floors, roof, fronts and backs are all built vacuum-bonded to ensure a light weight strong structural trailer.



VAULTED RADIUS ROOF

Vacuum bonded radius roof with vaulted ceiling providing superior insulation and more interior height.





SOLAIRE

ROCK-SOLID CONSTRUCTION

- A. Alpha Super Flex Membrane
- B. Luan Substrate
- C. Hi-Gloss Gel Coat
- D. Luan Substrate
- E. High density block foam insulation
- F. Pearl or Cool Grey Hi-Gloss Gel Coat Exterior
- G. High density block foam insulation
- H. Luan substrate
- I. Fiberglass front cap w/LED lights and
Line X® Rock Guard (Eclipse Models only)
- J. Residential Style Carpeting
- K. Fully welded aluminum super structure
- L. High density block foam insulation
- M. Luan substrate – top
- N. Luan substrate – bottom
- O. Congoleum® wood grain flooring
- P. Under floor holding tanks
- Q. Upgraded aluminum wheels (Eclipse only)
(Optional on X's and Ultras)

SOLAIRE

STANDARDS & OPTIONS

STANDARD FEATURES

- 6 Sided vacuum bonded construction
- Dexter or AL-KO torsion axle
- Equa Flex suspension axle (Ultras)
- Laminated full walk on barreled roof
- Full welded aluminum super structure
- Congoleum® wood grain flooring
- Magnetic baggage door catches
- Pocket screw lumber core cabinets
- Laminated roof w/ ducted A/C (Except 147 X)
- Pleated fabric window shades
- Pantries w/removable shelves and clothes rods
- Hi-Gloss Exterior Gel Coat
- Enclosed underbelly

COMMONLY ORDERED OPTIONS

- Aluminum wheels (Std. Eclipse models)
- Counter top extension (N/A on all floorplans)
- RVQ grill w/ bumper mount (bumper mount N/A on X's)
- Roof Ladder (N/A on X's and 297 RLDS, 315 RLSEK, 239 DSBH, 267 BHSK, 269 BHDSK)
- Spare tire, carrier and cover
- LED TV (sizes vary depending on floorplan)
- Solid surface counter tops
- Serta Trump® Mattress Upgrade (Std. Eclipse models)
- Power front jack (Std. Eclipse models)
- Power Stabilizer Jacks (Std. Eclipse models)
- Water Tank Heaters (Std. Eclipse models)
- Tri-Fold Hide A Bed
- Fireplace Available on Island Kitchen Floorplans (Std. on 312 TSQBK, 315 RLSEK, 247 RKES)
- Theatre Seating (N/A on all models)
- Create-a-breeze Fan

- See our website for a complete list of available options



Forest River, Inc. encourages our customers to purchase their Forest River products from a local dealership whenever possible for the following reasons:

- 1) Forest River, Inc. dealers are independently owned and operated businesses so priority service and scheduling is at their discretion and is often provided to customers that purchased their unit at that dealership.
- 2) Purchasing locally allows customers to establish meaningful relationships with a dealer, enhancing the RV experience through assistance with product questions, user tips or RV regulations for your state or country, and much more!
- 3) Canadian customers must meet requirements to bring an RV purchased out of the country to their home. These requirements may involve additional inspections and certifications, taxes and fees. Your local Canadian Dealer is a professional at meeting these requirements.
- 4) Scheduling timely warranty repairs and adjustments through a local dealership provides far greater flexibility and convenience to you, the customer!

It is the goal of Forest River, Inc. that all of our RV owners fully enjoy the RV experience and that customer satisfaction meets or exceeds their expectations!



PRE-DELIVERY INSPECTION FACILITY

20,000 square feet of quality assurance. The bare essentials for a premium product. This state-of-the-art facility gives immediate daily feedback to production for quality assurance in every unit built.



FREE MEMBERSHIP
to Forest River Owners' Group

www.forestriverfrog.com



SOLAIRE DEALER



Learn More
Scan this barcode using a QR Reader on your smart phone to learn more about Forest River.



A Berkshire Hathaway company.

SINCE 1968

PALOMINO

Recreational Vehicles

a Division of Forest River

PALOMINO RV

1047 EAST M-86 | COLON, MI 49040

P: 269.432.3271 | F: 269.432.2516

www.palominorv.com

All illustrations and specifications contained in this literature are based on the latest product information at time of publication. Forest River, Inc. reserves the right to make changes in prices, colors, materials, equipment and specifications at anytime without notice and assumes no responsibility for any error in this literature. All weights shown are approximate. All units are shipped F.O.B. point of manufacture. CONSULT YOUR LOCAL DEALER FOR WARRANTY INFORMATION. Litho U.S.A. 2015.02.04 FOR 1209