



YOUR VALUE LEADER
OASIS

SHASTA CONSTRUCTION
Leading Value in the RV Industry

Comfortable and roomy dinette booths are offered in every floorplan, along with a Jack Knife sofa, and a 60" x 74" Queen Bed. Durable fabrics, pocket-bored and screwed cabinetry, full extension ball bearing drawer guides, and electric slide rooms are details you will love in your time spent in a Oasis. From our Designer Carefree flooring to the one piece rubber roof, know your Oasis is supported by 16" on center wall and floor studs. The Oasis delivers everything you need for your travel adventures.



THE SHASTA STORY -
Leading Value in the RV Industry

In 1941, the first Shasta "house trailer" was built to be used as mobile military housing. Today, over 70 years later, Shasta remains an important player in the multi-billion-dollar RV industry. As one of the industry's longest producers of recreational vehicles, Shasta is proud of its longevity. We've earned our success in the best possible way - through experience ... more experience than any other R V company in the world. Shasta's respected name prevails in today's fast-moving RV industry because of experience, combined with a strong, service-oriented dealer network, a loyal, repeat customer base, and our outstanding association with our parent company, Forest River.

FLOOR PLAN	SST 21CK	SST 25BH	SST 25RS	SST 26DB	SST 26RL	SST 28BK	SST 30QB	SST 310K
Length Overall	25' 8"	28' 11"	28' 11"	29' 11"	31' 11"	29' 11"	34' 7"	34' 8"
Width	96"	96"	96"	96"	96"	96"	96"	96"
Tire size	ST205/75R14	ST205/75R14	ST205/75R14	ST205/75R14	ST205/75R14	ST205/75R14	ST205/75R14	ST205/75R14
Exterior Height w/ A/C	10' 6"	10' 6"	10' 8"	10' 6"	10' 8"	10' 8"	10' 8"	10' 8"
Main Slide Room Height	NA	NA	5' 8"	5' 8"	5' 8"	5' 8"	5' 8"	5' 8"
Dry Weight (lbs.)	4,188	4,296	4,540	4,870	5,182	5,843	5,618	5,670
Hitch Weight (lbs.)	506	530	544	517	627	734	763	630
Fresh Water Tank Cap. (gal.)	50	50	50	50	50	50	50	50
Grey Water Tank Cap. (gal.)	36	36	36	36	36	72	36	36
Black Water Tank Cap. (gal.)	36	36	36	36	36	36	36	36
Awning	17'	17'	17'	17'	20'	20'	17'	17'
Furnace (BTU's)	18K	18K	18K	18K	18K	18K	18K	18K
Water Heater Capacity (gal.)	6	6	6	6	6	6	6	6



24/7 EMERGENCY ROADSIDE ASSISTANCE
Coach-Net®
For a worry-free ownership experience, Forest River includes one year of Coach-Net RV Technical & Roadside Assistance with each RV purchase. Whether new to the RV lifestyle or an experienced RV enthusiast, Forest River owners have 24/7 access to technical, operational and emergency roadside service coverage throughout the US & Canada. Coach-Net's fast, dependable service is just a phone call away.

PRE-DELIVERY INSPECTION FACILITY
20,000 square feet of quality assurance. The bare essentials for a premium product. This state-of-the-art facility gives immediate daily feedback to production for quality assurance in every unit built.

All illustrations and specifications contained in this brochure are based on the latest product information at time of publication. Shasta Recreational Vehicles reserves the right to make changes in prices, colors, materials, equipment and specifications, and to discontinue models at any time without notice. Some equipment shown separately, or on products illustrated in this brochure, may be optional at extra cost. Check with your Shasta dealer for more information if you have specific questions. ©Copyright 2014 Shasta, a Division of Forest River Inc. - All Rights Reserved.



Forest River, Inc. encourages our customers to purchase their Forest River products from a local dealership whenever possible for the following reasons:

It is the goal of Forest River, Inc. that all of our RV owners fully enjoy the RV experience and that customer satisfaction meets or exceeds their expectations!

- 1) Forest River, Inc. dealers are independently owned and operated businesses so priority service and scheduling is at their discretion and is often provided to customers that purchased their unit at that dealership.
- 2) Purchasing locally allows customers to establish meaningful relationships with a dealer, enhancing the RV experience through assistance with product questions, user tips or RV regulations for your state or country, and much more!
- 3) Canadian customers must meet requirements to bring an RV purchased out of the country to their home. These requirements may involve additional inspections and certifications, taxes and fees. Your local Canadian Dealer is a professional at meeting these requirements.
- 4) Scheduling timely warranty repairs and adjustments through a local dealership provides far greater flexibility and convenience to you, the customer!



Learn More
Scan this barcode using a QR Reader on your smart phone to learn more about Forest River.



YOUR SHASTA Oasis DEALER:



SHASTA - OASIS LIGHTWEIGHT TRAVEL TRAILERS

Shasta
EST. 1941

YOUR VALUE LEADER
OASIS

YOUR VALUE LEADER FOR THE BEST

RV



SHASTA LIVING Leading Value in the RV Industry

The Oasis has all you need for an impressive home base. A full galley kitchen with a 3 burner cooktop, residential 60/40 sink, a 6 cubic foot refrigerator, and a 6 gallon gas DSI water heater. Outside there's pass-through storage, and front diamond plate rock guard to make your life easy. When it's finally time to sleep, enjoy the comfortable 60"x 74" queen bed, with reading lights and wardrobes. Oasis from Shasta is the value leader for all your travels!

25RS

YOUR VALUE LEADER FOR THE BEST

DINING



STANDARDS

Exterior

- Front Hitch Light
- Bumper with Drain House Carrier and End Caps
- Baggage Doors
- Straight Axles with Electric Brakes
- E-Z Lube Hubs
- Amber Patio Light with Inside Switch
- Radius Entry Door with Screen
- Molded Rain Gutter with Extra Long Spouts
- Black-Framed Radius Tinted Safety Glass Windows
- LP Bottle
- Front Diamond Plate Rock Guard

Power Systems

- 12V Demand Water Pump
- Systems Monitor Panel
- Auto-Ignition Furnace with Wall Thermostat
- Water Heater Bypass
- Water System Winterization Kit
- 18K BTU's Furnace
- 6-Gal Water Heater

Interior

- Pocket-Bored and Screwed Cabinets
- Full Extension Ball Bearing Drawer Guides
- Mini Blinds
- Box Valances in Living Area
- Jack Knife Sofa

OPTIONS

Exterior

- Cable TV Hookup in Living Area and in Bedroom
- RG6 Coax Cable
- Beauflor Tile Flooring
- Under Bed Storage

Kitchen

- Residential 60/40 Sink
- High Goose Neck Faucet
- Range Hood with Exhaust Fan and Light

Bathroom

- Powered Roof Vent
- Marine Toilet with Foot Flush
- Medicine Cabinet with Mirror
- Large Sink

Construction

- .024 Aluminum Exterior Skin
- R-7 Fiberglass Insulation in Sidewall, Floor and Roof
- Radius Wood Rafters
- Aerodynamic Radius Front Profile
- 16"-On-Center Wood Wall Studs
- Electric Room Slides
- One-Piece Rubber Roof with 12-Yr. Warranty
- 8' Exterior Width
- Cambered Steel I-Beam Frame

Safety Features

- CO2 Detector
- LP Leak Detector
- Fire Extinguisher and Smoke Alarm

CAMPING WITH EASE PACKAGE

- 6-Gal. Gas DSI HW Heater
- 13.5 BTU A/C
- 3-Burner Cooktop
- Microwave Oven
- Residential 60/40 Sink
- High Goose Neck Faucet
- Radial Tires
- Patio Awning

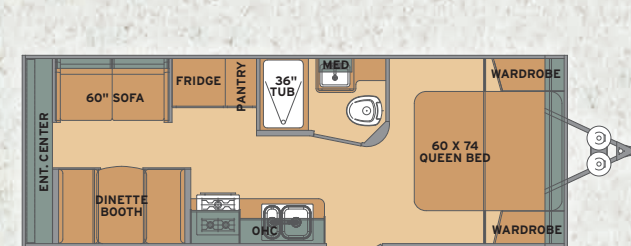
OPTIONS

Exterior

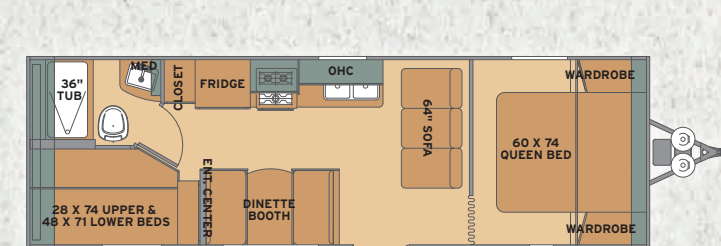
- Spare Tire and Carrier
- (4) Stab Jacks
- Electric Awning
- Outside Shower
- 2ND LP Bottle with Auto Changeover and ABS Cover

Interior

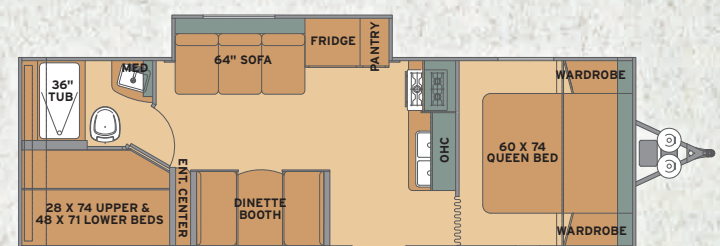
- Range with Oven in Place Of Cooktop
- 13.5K BTU Ducted A/C
- 15K BTU Ducted A/C
- 15K BTU in Place of 13.5K BTU A/C
- 48" Top Bunk IPO Std 28" Bunk (25RS, 26DB & 28BK)



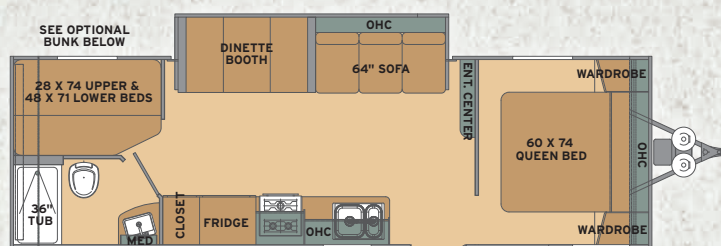
21CK



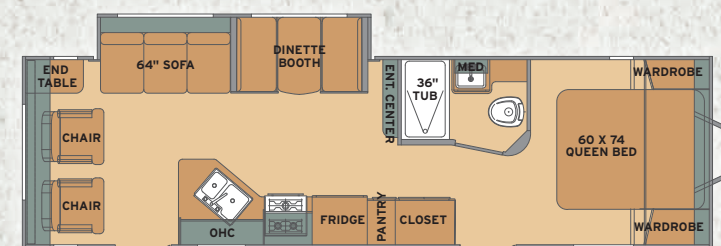
25BH



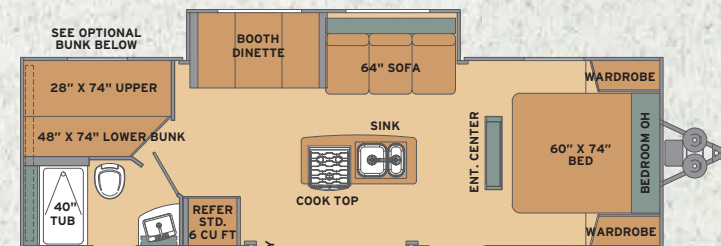
25RS



26DB



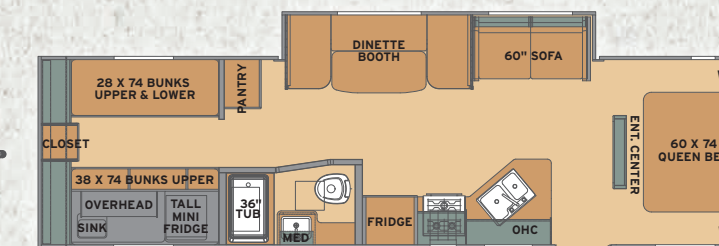
26RL



28BK



30QB



310K