

Trend



Why Trend?

- Compact size that can go anywhere
- Swivel cab seats
- Ultraleather™ furniture
- LED ceiling lights
- StudioLoft™ bed with electric lift
- Radio/GPS Navigation with 5" color touch screen
- Powered patio awning with LED lighting
- Rearview Monitor System with color camera
- MCD blackout roller shades



On the Cover: 23L Deluxe Graphics Package

23L Turbo with Aosta Cherry Cabinetry

Blaze New Trails

Get ready for a full-featured motorhome experience at an unbelievable price. Built on the new Ram ProMaster chassis, the new Winnebago Trend™ delivers fuel-efficiency and comfortable living space for up to four people. Both 23' floorplans offer a powered StudioLoft™ bed that lifts tight to the ceiling to conserve space during the day. Other


features include energy-saving LED lighting and soft, easy-to-clean Ultraleather™ furniture. We've even added three-point seat belts to the dinette—an industry first. Start something special when you're one of the first on the road in an all-new Winnebago Trend.



Recognized Quality The RV Dealers Association bestows its annual Quality Circle Award based on dealer ratings to the manufacturers that provide exceptional products, service and support. Only one manufacturer has received this honor for seventeen consecutive years: Winnebago Industries®

Best in Class

See how Winnebago Industries takes motorhome design and function to the next level, and why we've earned the right to be called the Most Recognized Name in Motorhomes.®

 Click on this icon throughout the brochure to link to more information on the web.



The **Rearview Monitor System** with its color rearview camera increases your visibility and awareness of your surroundings as you travel.



The dinette bench seat in the Trend is the first in the industry to come equipped with **3-Point Seat Belts**.



The **Skylight** with its pleated shade gives you more control of the lighting and ambiance in the Trend.



The **StudioLoft™** bed comes complete with an electric lift, privacy curtain, and ladder (23L), giving you more sleeping space and the ability to easily retract the bed when it's not in use.



Adjust your preferred light and privacy settings with **MCD Blackout Roller Shades**

Whether it's a late night movie or an evening spent playing board games, the Trend lounge is the perfect place to host. From the Ultraleather™ dinette and sofa/bed (23B) to the swivel cab seats and bench seat (23L), the thoughtfully designed lounge serves multiple purposes, from dining room to sleeping accommodations. With LED lighting and MCD blackout roller shades, you can control the amount of lighting and privacy you prefer.



23L Turbo with Aosta Cherry Cabinetry



HDTV



23L Pull-Out Table



23L Galley



2-Burner Range and Sink with Glass Covers

The galley can accommodate everything from an afternoon snack to a family dinner. Functional features include a microwave oven, a 2-burner range top with a glass cover, refrigerator/freezer, and a cold water filtration system. The laminate countertop and flip-up countertop extension (23L) serve as prep space, while the decorative backsplash with indirect lighting gives the galley a polished look.



23L Flip-Up Countertop Extension

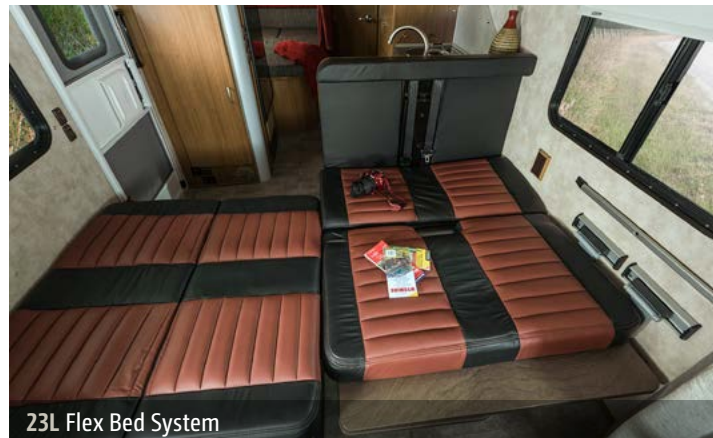


23L Bedroom

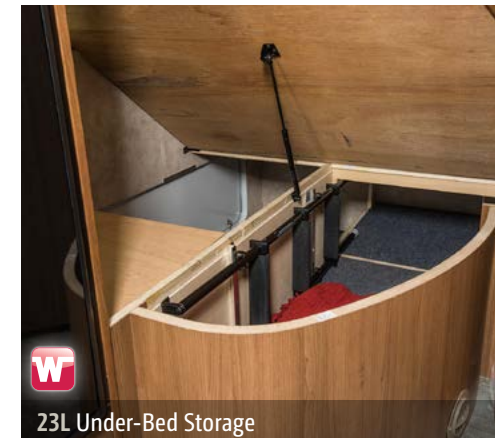


Bathroom

No matter which floorplan you choose, the Trend offers comfortable sleeping solutions, whether it's the Flex Bed System or powered StudioLoft™ bed. The 23L features a rear corner bed with adjustable headrests—just the spot for relaxing while reading a book or watching a movie—while the space below the bed provides additional storage.



23L Flex Bed System



23L Under-Bed Storage



Dash

Piloting the Trend is easy and enjoyable, thanks to its compact size and smooth ride made possible by the new Ram ProMaster chassis. The swivel cab seats offer flexibility and will help make your ride a comfortable experience. Take advantage of the radio that offers a GPS system, a 5" color touch screen monitor, Bluetooth™, Sirius XM™ with one-year complimentary subscription, and much more. At night, the cab window privacy panels can be lowered. An available dash appliqué provides extra style and customization to your Trend.



Powered Mirrors



Swivel Cab Seats

With everything from a powered patio awning and outdoor LED lighting to an exterior speaker system, you'll love relaxing in the great outdoors—day or night. Rotocast storage compartments provide plenty of accessible storage space. The all-new Euro-body styling with its premium high-gloss finish gives the Trend a strikingly sharp look.



Powered Patio Awning with LED Lighting



Powered Patio Awning with LED Lighting



Stylized Aluminum Wheels



23L Large Rear Storage Compartment

Fiberglass Roof

The one-piece fiberglass roof is backed by a 10-year limited parts-and-labor roof skin warranty.

Rubber Can't Cut It

Rubber roofs used by competitors can streak and degrade over time.

Thermo-Panel® Sidewalls

By layering fiberglass and high-density block foam insulation with welded aluminum support structures, we create some of the industry's strongest, most durable and lightweight sidewalls.

Embedded Steel Metal substructures embedded into the sidewall provide solid attachment points to keep cabinets and appliances mounted securely in place.

E-Coating An electrodeposition coating helps protect critical steel components.

Laser-Cut Tubing Precision laser cutters create precise joints in structural steel that are stronger and require less welding.



Interlocking Joints Specially engineered interlocking joints connect the floor, sidewalls, and roof where competitors often rely on simple screws to bear the weight.



Solid Framework Aluminum extruded in our own facility to our exacting standards creates an extremely strong and solid structural framework.

SUPER STRUCTURE®

BUILT TO LAST

Every coach—from our smallest Class C to our largest diesel-pusher model—is built to Winnebago Industries'® legendary SuperStructure® construction standards. It's a process developed and refined over more than 50 years of building some of the strongest, most durable coaches in the industry.

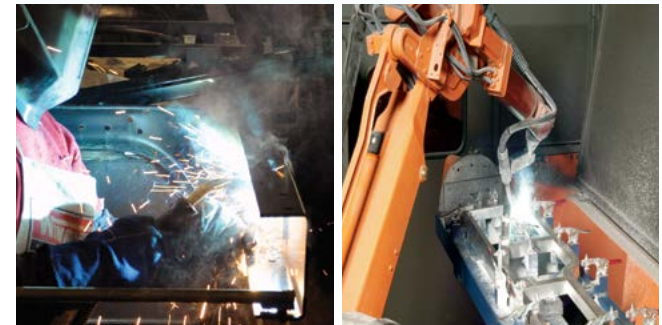
TESTING Before rolling out of our factories, every coach undergoes an extensive 113-point inspection. Each coach also passes a high-pressure water test that simulates rain at a rate of 50-inches per hour to check for leaks. During the design process, our computer simulations, physical testing center, and rigorous test track ensure each model is built to last.



DETAILS At Winnebago Industries, we treat the features you can't see with the same care as the ones you can. Look in the access panels of some of our competitors' coaches and you'll see loose insulation and wires haphazardly strewn about. Winnebago Industries maintains a clean fit and finish throughout so your coach will last for the long haul.



BUILT IN-HOUSE We extrude our own aluminum. We rotocast our own plastic components. In fact, we manufacture most of our own parts so they are designed to fit the space, rather than fitting the space to an awkward off-the-shelf component size.



**SUPER
STRUCTURE**
BUILT TO LAST

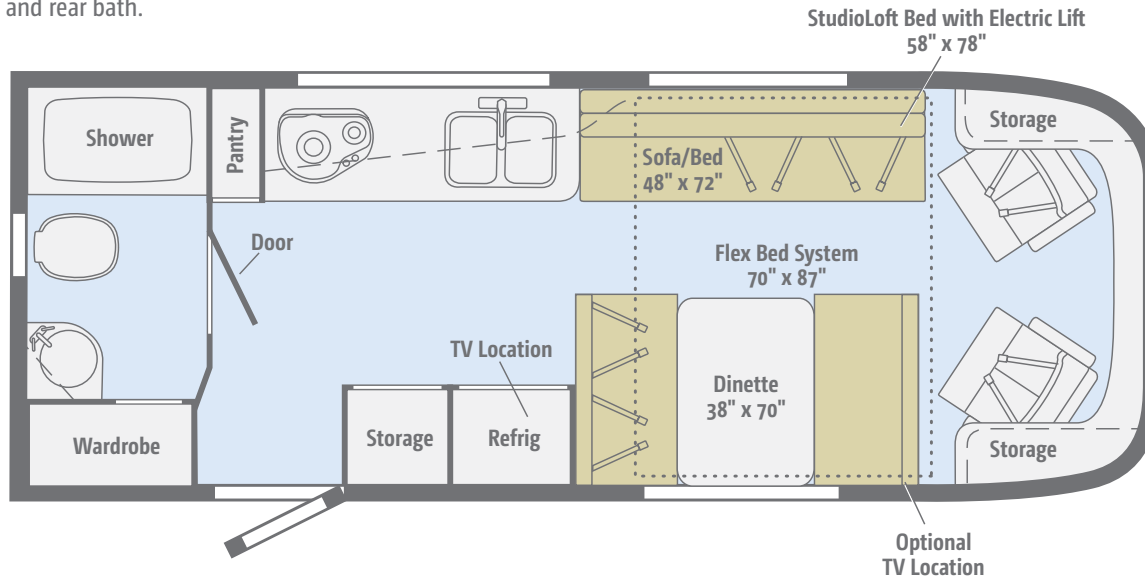
Visit BetterBuiltRVs.com to gain real insight into what goes into a Winnebago Industries motorhome.

TAKE A TOUR We're proud of our processes, state-of-the-art facilities, and the people who make Winnebago Industries number one. We invite you to visit our complex in Forest City, Iowa, for a first-hand look at the dedication and technology behind every motorhome we build.



NEW 23B

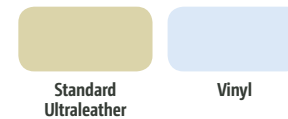
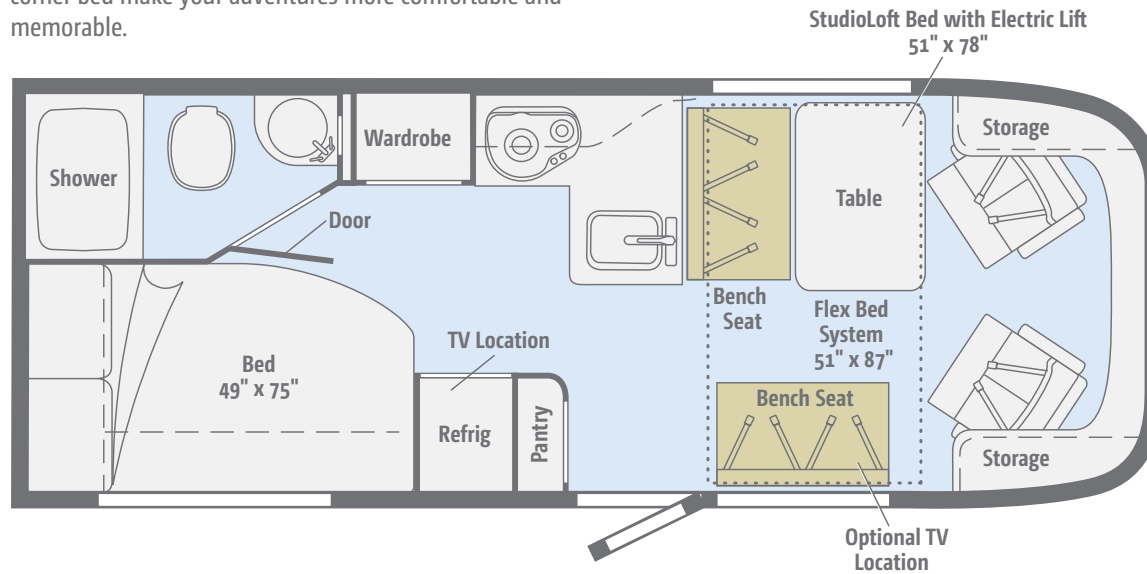
Gather with friends and family in the swivel cab seats, dinette with Ultraleather seats, and sofa that converts to a bed at night, while enjoying the mid-coach galley and rear bath.



Dimensions shown are for sleeping space only and may vary due to styling differences. Dashed lines denote overhead storage areas. Floorplans and specifications are also available online at GoWinnebago.com.

NEW 23L

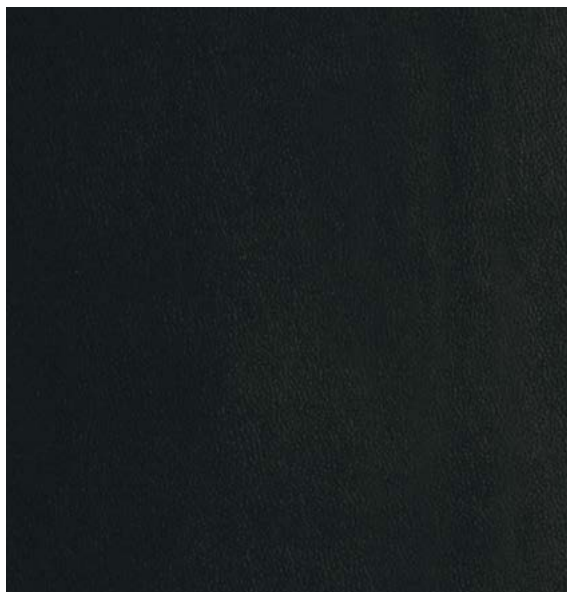
Swivel cab seats, a mid-coach L-shaped galley, and a rear corner bed make your adventures more comfortable and memorable.



Dimensions shown are for sleeping space only and may vary due to styling differences. Dashed lines denote overhead storage areas. Floorplans and specifications are also available online at GoWinnebago.com.

Choose from five fabric collections and two wood finishes, each with Satin Nickel hardware.

Turbo



Ultraleather



Ultraleather
Insert



Accent



Laminate
Countertop



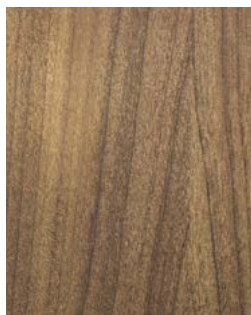
Wall Board



Vinyl



Aosta Cherry



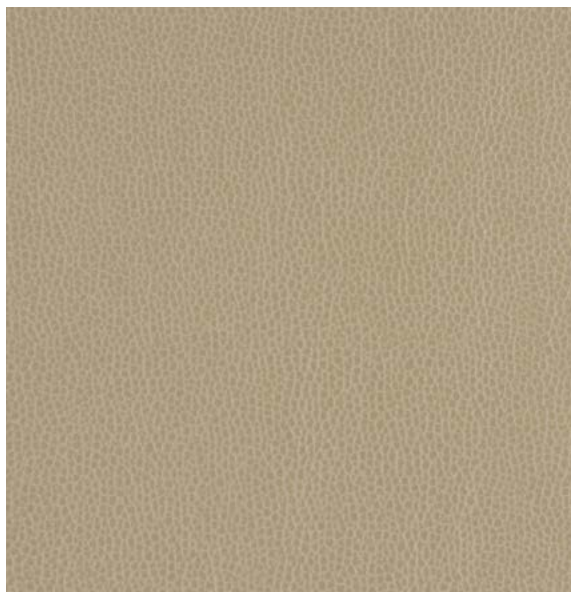
High-Gloss
Marbella Cherry*

**High-Gloss Marbella Cherry on cabinet door and drawer fronts.*

Winnebago Industries® reserves the right to change décor materials and specifications without notice or obligation.

Choose from five fabric collections and two wood finishes, each with Satin Nickel hardware.

Victory



Ultraleather



Ultraleather
Insert



Accent



Laminate
Countertop



Wall Board



Vinyl



Aosta Cherry



High-Gloss
Marbella Cherry*

**High-Gloss Marbella Cherry on cabinet door and drawer fronts.*

Winnebago Industries® reserves the right to change décor materials and specifications without notice or obligation.

Choose from five fabric collections and two wood finishes, each with Satin Nickel hardware.

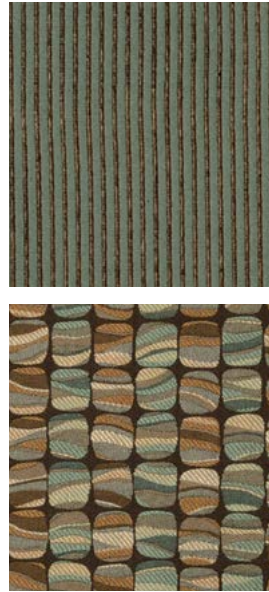
Pursuit



Ultraleather



Ultraleather
Insert



Accent



Laminate
Countertop



Wall Board



Vinyl



Aosta Cherry



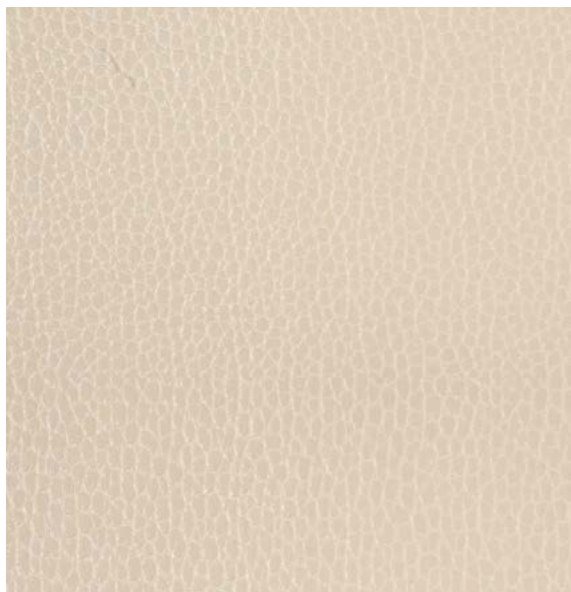
High-Gloss
Marbella Cherry*

**High-Gloss Marbella Cherry on cabinet door and drawer fronts.*

Winnebago Industries® reserves the right to change décor materials and specifications without notice or obligation.

Choose from five fabric collections and two wood finishes, each with Satin Nickel hardware.

Vapor



Ultraleather



Ultraleather
Insert



Accent



Laminate
Countertop



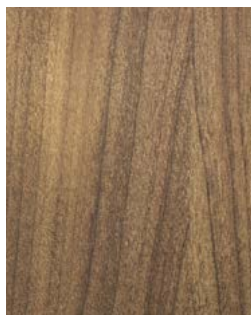
Wall Board



Vinyl



Aosta Cherry



High-Gloss
Marbella Cherry*

**High-Gloss Marbella Cherry on cabinet door and drawer fronts.*

Winnebago Industries® reserves the right to change décor materials and specifications without notice or obligation.

Choose from five fabric collections and two wood finishes, each with Satin Nickel hardware.

Vapor with Fabric



Fabric



Fabric Insert



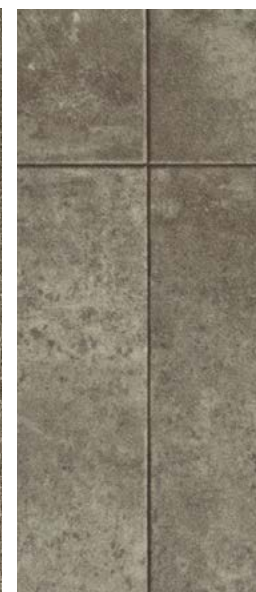
Accent



Laminate
Countertop



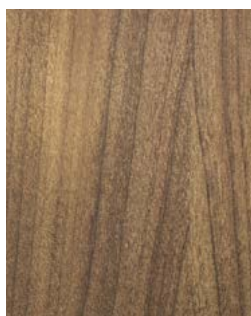
Wall Board



Vinyl



Aosta Cherry



High-Gloss
Marbella Cherry*

**High-Gloss Marbella Cherry on cabinet door and drawer fronts.*

Winnebago Industries® reserves the right to change décor materials and specifications without notice or obligation.

The Trend comes standard with a premier high-gloss deluxe graphics package.



DELUXE GRAPHICS PACKAGE

Weights & Measures

| | 23B | 23L |
|--|------------|------------|
| Length | 24' | 24' |
| Exterior Height ¹ | 10'1" | 10'1" |
| Exterior Width | 7'6.5" | 7'6.5" |
| Exterior Storage ² (cu. ft.) | 15.8 | 35 |
| Awning Length | 15' | 15' |
| Interior Height | 6'7" | 6'7" |
| Interior Width | 7'3" | 7'3" |
| Freshwater Tank Capacity ³ (gal.) | 27 | 26 |
| Water Heater Capacity (gal.) | Continuous | Continuous |
| Holding Tank Capacity - Black/Gray ³ (gal.) | 40/32 | 32/40 |
| LP Capacity ⁴ (gal.) | 13 | 13 |
| Fuel Capacity (gal.) | 24 | 24 |
| GCWR ⁵ (lbs.) | 11,500 | 11,500 |
| GVWR (lbs.) | 9,350 | 9,350 |
| GAWR - Front (lbs.) | 4,630 | 4,630 |
| GAWR - Rear (lbs.) | 5,291 | 5,291 |
| Wheelbase | 159" | 159" |

Ram ProMaster Chassis

280-hp. 3.6L V6 gas engine, 6-speed automatic 62TE transmission, 220-amp. alternator

Trailer Hitch⁶ 2,000-lb. drawbar/200-lb. maximum vertical tongue weight and wiring w/4-pin connector

Stylized aluminum wheels



Ram ProMaster
Chassis

Cab Conveniences

Cab seats armrests, adjustable lumbar support, adjustable seat height, and multi-adjustable swivel/slide/recline

Radio 5" LCD touch screen color monitor w/GPS, SiriusXM (one-year complimentary subscription included), iPod®/MP3 input, Bluetooth™

Rearview Monitor System w/color camera

Airbags driver and front passenger, side curtain, and seat-mounted side pelvic-thorax

3-point seat belts

Cruise control

Power steering w/adjustable wheel

12-volt powerpoints

Power door locks

Sunvisors

Power exterior mirrors w/defrost/turn signal

Cab window privacy panels

Powered windows

OPTIONAL EQUIPMENT

Dash appliqué

Interior

22" HDTV (23L) (mid-coach)

26" HDTV (23B) (mid-coach)

Coach Stereo System AM/FM, CD/DVD player, Bluetooth, front input jack and alarm clock

LED lights

Satellite system ready

Skylight w/shade

MCD blackout roller shades

Tinted windows

Amplified digital HDTV antenna

Systems monitor panel

Powered roof vent (galley, bath)

StudioLoft™ w/electric lift and privacy curtain

Vinyl ceiling

Ladder w/StudioLoft (23L)

OPTIONAL EQUIPMENT

19" HDTV (front)

Galley

Laminate countertops

Flip-up countertop extension (23L)

Single-door refrigerator/freezer

2-burner range top w/glass cover

Microwave oven

Decorative backsplash w/indirect lighting

Cold water filtration system

Stainless steel sink w/glass cover, dishpan, cutting board, drain pan, and silverware rack (23L)

Double stainless steel sink w/sink covers (23B)

Bathroom

Skylight

Flexible showerhead

Retractable, self-cleaning shower screen

Water pump switch

Bedroom

Foam mattress w/cover, adjustable headrest, headboard, and storage below bed (23L)

Exterior

Powered patio awning w/LED lighting

Porch light w/interior switch

Automatic entrance door steps

Premium high-gloss skin

Front and rear mud flaps

Rotocast storage compartments

Exterior speaker system

Heating & Cooling System

13,500 BTU roof-mount, high-efficiency A/C w/heat strip

20,000 BTU low-profile, ducted furnace

Electrical System

Exterior AC duplex receptacle and TV jack

2,800-watt Cummins® Onan® gas generator

AC/DC load center, 45-amp. converter/charger

Power Cord Compartment 30-amp. power cord, cable TV input, portable satellite dish hookup

Coach battery disconnect system

Automatic dual-battery charge control

Auxiliary start circuit

Deep-cycle, Group 31 AGM battery

Plumbing System

Service Center pressurized city water hookup, exterior wash station w/pump switch

Water tank fill w/lockable door

10' sewer hose

Tankless water heater

TrueLevel™ holding-tank monitoring system

Winterization Package water heater bypass and siphon tube

Permanent-mount LP tank w/gauge

On-demand water pump

OPTIONAL EQUIPMENT

Heated drainage system

Safety

3-point dinette seat belts (2) with child seat tether anchors (2)

LP, smoke, and carbon monoxide detectors

10 BC fire extinguisher

Ground fault interrupter

Daytime running lamps

Warranty⁶

12-month/15,000-mile basic limited warranty⁷

36-month/36,000-mile limited warranty on structure⁷

10-year limited parts-and-labor warranty on roof skin⁷

- 1 The height of each model is measured to the top of the tallest standard feature and is based on the curb weight of a typically equipped unit. The actual height of your vehicle may vary by several inches depending on chassis or equipment variations. Please contact your dealer for further information.
- 2 The load capacity of your motorhome is designated by weight, not by volume, so you cannot necessarily use all available space when loading your motorhome.
- 3 Capacities are based on measurements prior to tank installation. Slight capacity variations can result due to installation applications.
- 4 Capacities shown are tank manufacturer's listed water capacity (W.C.). Actual filled LP capacity is 80% of listing due to overfilling prevention device on tank.
- 5 Actual towing capacity is dependent on your particular loading and towing circumstances which includes the GVWR, GAWR, and GCWR, as well as adequate trailer brakes. Please refer to the Operator's Manual of your vehicle for further towing information.
- 6 See separate chassis warranty.
- 7 See your dealer for complete warranty information.

Winnebago Industries® continuing program of product improvement makes specifications, equipment, model availability, and prices subject to change without notice. Published content reflects the most current product information at time of printing. Please consult your dealer for individual vehicle features and specifications.

GoWinnebago.com Has All The Answers

Visit GoWinnebago.com on your computer, smartphone or tablet for the latest product information and updates.



PREFERRED CARE PROGRAM

We back our motorhomes with best-in-class support both before *and* after the sale:

- 12-month/15,000-mile basic limited warranty
- 36-month/36,000-mile limited warranty on structure
- 10-year limited parts-and-labor warranty on roof skin
- Complimentary 24-hour roadside assistance program



TRIP Saver
FAST TRACK PARTS

- TripSaver® Fast Track Parts guarantees that in-stock warranty parts ship directly to your dealer within 24 hours
- National dealer service network



WIT CLUB

Join the Club, Join the Fun

As a Winnebago motorhome owner, you are invited to join the WIT Club. It's a great way to take full advantage of your new coach and meet fun-loving WIT Club members from across the country who make motorhome adventures a way of life.



Members enjoy:

- Caravans and rallies
- Newsletters
- Local and state group activities
- RV travel benefits

See more at WITclub.com



Grand National Rally

In 1969, two things happened: Neil Armstrong took mankind's first steps on the moon, and Winnebago Industries' WIT Club launched its first Grand National Rally in Forest City, Iowa. Every year since then, thousands of rally-goers connect with old friends to enjoy concerts, tours, activities, and more. Blast off for an adventurous week in July to celebrate 45 years of interstate land roving at the 2014 "Out of This World" Grand National Rally. It's a mission you'll never forget!