

# Forza

**WINNEBAGO**<sup>®</sup>



## *Why Forza?*

- Primera cab seats and furniture
- LED ceiling lighting
- Residential refrigerator
- MCD blackout roller shades
- Polished Corian<sup>®</sup> countertops and glass tile backsplash
- Flex Bed System with powered bunk (38R) and available powered StudioLoft (34T)
- Powered patio awning with LED lighting
- 2,000-watt inverter/charger
- Automatic generator start system
- Available exterior entertainment center with HDTV
- Extensive storage



On the Cover: 38R Graystone Full-Body Paint

38R Mountain View with Coffee-Glazed Forest Cherry Cabinetry

## Go Forward

It's time to go diesel with the elegant, pleasantly-priced Forza™. The Freightliner® XCS chassis provides a solid foundation with a Cummins® 340-hp diesel engine and Allison® six-speed transmission delivering the power. Diesel-pushers are known for storage and the Forza ups the ante with its Smart Storage™ design that pushes

capacity even further. Inside, you will appreciate fine amenities such as polished Corian® galley countertops, coffee-glazed cabinetry, upscale entertainment features, and LED lighting. Take a stroll through the Forza, and you will already be planning your first adventure.



**Recognized Quality** The Recreation Vehicle Dealer Association annually rates RV manufacturers and awards the Quality Circle Award to manufacturers that provide exceptional products, service, and support. Winnebago is proud to be the only manufacturer that has received this award every year since its inception.

## Best in Class

See how Winnebago takes motorhome design and function to the next level, and why we've earned the right to be called the Most Recognized Name in Motorhomes.®



Click on this icon throughout the brochure to link to more information on the web.



Enjoy comfortable dining in the **BenchMark® Dinette** (36G, 38R). Drop down the Dream Dinette table and easily convert it into a convenient sleeping space for your guests.



The **Multi-Purpose Room with Flex Bed System** (38R) can smoothly transition from a wardrobe to a dinette. Quickly convert this area into two bunk beds when you have guests.



Keep your clothes fresh and clean wherever you are with the available **Washer and Dryer**.



The **Radio/Rearview Monitor System** features a touch screen color monitor, iPod®/MP3 input, and rearview color camera. Add the available SiriusXM™ satellite radio (subscription not included) so you can listen to your favorite stations wherever you go.



38R Mountain View with Coffee-Glazed Forest Cherry Cabinetry

Whether you're looking for an adventurous day on the road, a quiet afternoon cuddled up in front of the cozy available fireplace, or an evening of entertaining friends, the Forza lounge is an incredibly versatile space to accommodate your needs. Enjoy the home theater sound bar system with a built-in CD/DVD player, while the MCD blackout roller shades give you control over the tinted, dual-glazed, thermo-insulated coach windows. LED ceiling lights and a soft vinyl ceiling add to the relaxing ambiance.



MCD Blackout Roller Shades



HDTV and Available Fireplace



38R Galley

Preparing meals and snacks is a joy with ample preparation space and high-end galley features. Popular amenities include a three-burner range top, a microwave/convection oven with a range fan, a two-door residential refrigerator with an icemaker, and extensive storage with the pull-out drawers and adjustable shelves. The tasteful Corian® countertops, sink covers, and glass tile backsplash provide extra preparation space with a touch of elegance. You can also customize your galley to your preferred style with your choice of attractive cabinet finishes, including Coffee-Glazed Honey Cherry, Coffee-Glazed Forest Cherry, and Coffee-Glazed Vienna Maple.



Two-Door Residential Refrigerator



Pantry



Full-Extension Drawer Slides

Enjoy restful nights in the spacious master bedroom. You'll appreciate the roomy, walk-around queen bed and the ceiling flip-down HDTV in the 38R, while the generous wardrobe provides abundant storage. Take advantage of the available Ideal Rest® Nouveau digital comfort control mattress for even more comfort by customizing the firmness and support to your personal preference. You'll enjoy the washer and dryer available in each floorplan.



38R Bedroom



38R Master Bath



38R Guest Bath



38R Wardrobe



38R Flip-Down HDTV

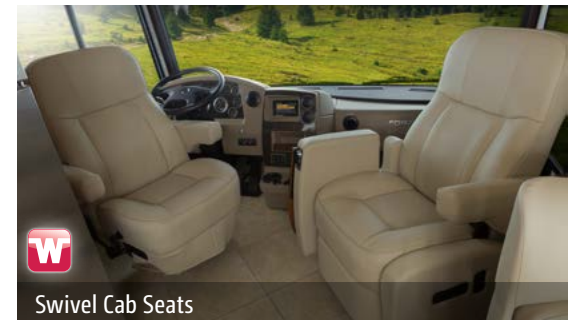


Dash

Get ready to kick your motorhome lifestyle into high gear. Noted for its signature quality and smooth ride, this luxury diesel-pusher will deliver the superior performance of the Maxum Chassis®. Six-way power cab seats offer stylish comfort while driving and also swivel as comfortable lounge chairs to accommodate more guests when parked. Powered mirrors with sideview cameras, a powered MCD visor shade, and a color rearview camera provide further comfort and control on the road.



Powered MCD Windshield/Visor Shade



Swivel Cab Seats

The Forza makes setup easy with quality features such as the exterior wash station so you can spend more time enjoying your destination and your journey. Relax under the powered patio awning and enjoy a movie on the HDTV with the available exterior entertainment center. Loading and unloading your gear is a breeze with spacious, lighted exterior storage compartments.



38R Powered Patio Awning with LED Lighting



Powered Mirrors



38R Exterior Storage

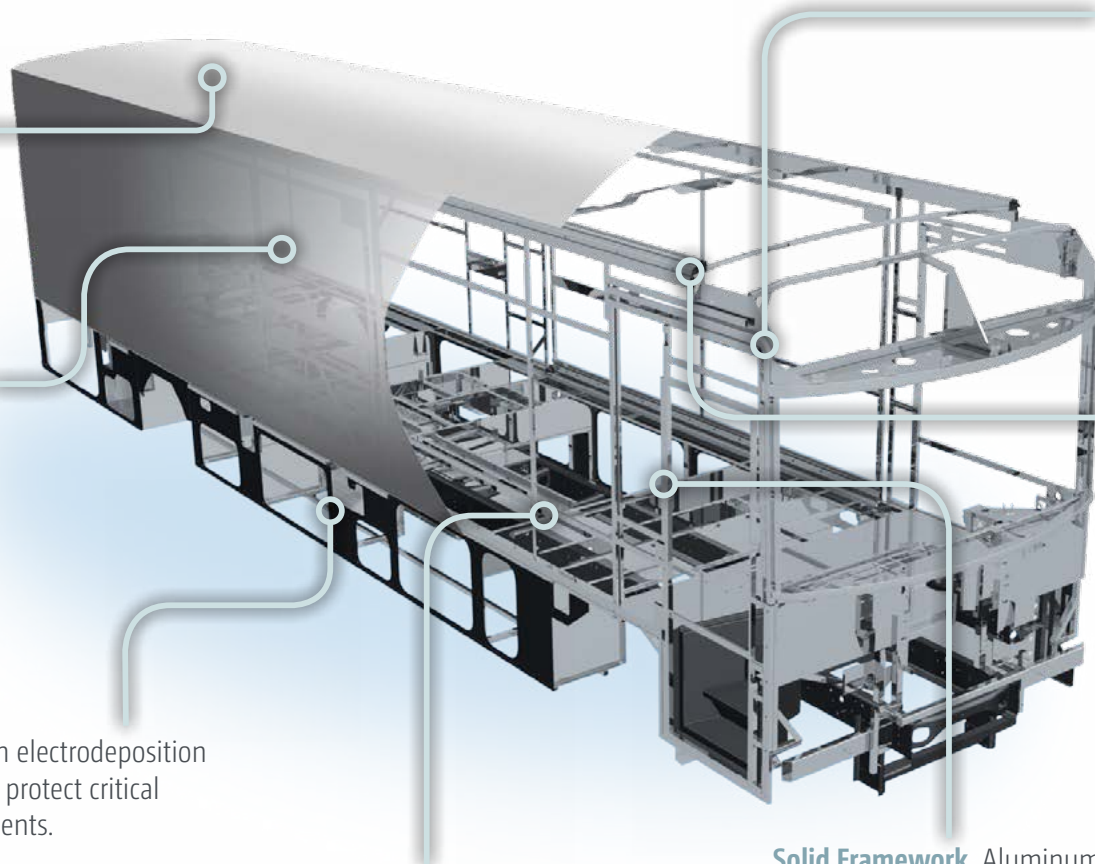


38R Patio Awning with LED Lighting



Stylized Aluminum Wheels (NA 34T)





### Fiberglass Roof

The crowned, one-piece fiberglass roof is backed by a 10-year limited parts-and-labor roof skin warranty.

### Thermo-Panel® Sidewalls

By layering fiberglass and high-density block foam insulation with welded aluminum support structures, we create some of the industry's strongest, most durable and lightweight sidewalls.

**E-Coating** An electrodeposition coating helps protect critical steel components.

**Embedded Steel** Metal substructures embedded into the sidewall provide solid attachment points to keep cabinets and appliances mounted securely in place.

**Laser-Cut Tubing** Precision laser cutters create precise joints in structural steel that are stronger and require less welding.



**Interlocking Joints** Specially engineered interlocking joints connect the floor, sidewalls and roof where competitors often rely on simple screws to bear the weight.



**Solid Framework** Aluminum extruded in our own facility to our exacting standards creates an extremely strong and solid structural framework.

# SUPER STRUCTURE

BUILT TO LAST

Every coach—from our smallest Class C to our largest diesel-pusher model—is built to Winnebago's® legendary SuperStructure® construction standards. It's a process developed and refined over more than 50 years of building some of the strongest, most durable coaches in the industry.

**TESTING** Before rolling out of our factories, every coach undergoes an extensive 113-point inspection. Each coach also passes a high-pressure water test that simulates rain at a rate of 50-inches per hour to check for leaks. During the design process, our computer simulations, physical testing center, and rigorous test track ensure each model is built to last.



**DETAILS** At Winnebago, we treat the features you can't see with the same care as the ones you can. Look in the access panels of some of our competitors' coaches and you'll see loose insulation and wires haphazardly strewn about. Winnebago maintains a clean fit and finish throughout so your coach will last for the long haul.



**BUILT IN-HOUSE** We extrude our own aluminum. We rotocast our own plastic components. In fact, we manufacture most of our own parts so they are designed to fit the space, rather than fitting the space to an awkward off-the-shelf component size.



**SUPER STRUCTURE**  
BUILT TO LAST

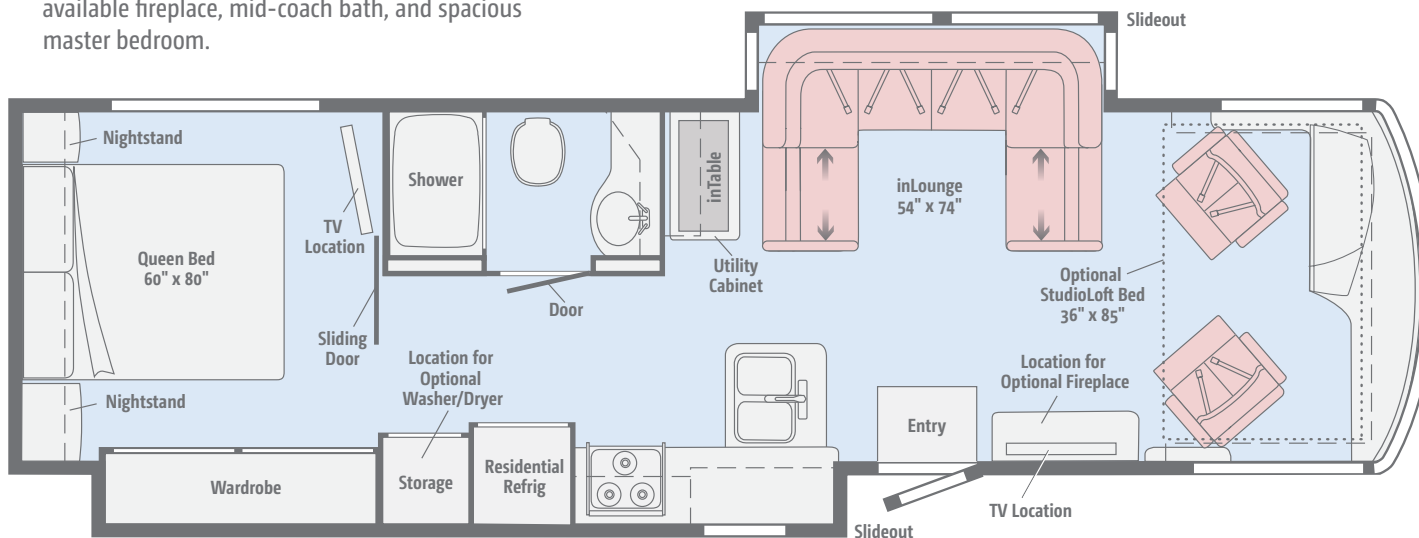
Visit [BetterBuiltRVs.com](http://BetterBuiltRVs.com) to gain real insight into what goes into a Winnebago motorhome.

**TAKE A TOUR** We're proud of our processes, state-of-the-art facilities, and the people who make Winnebago number one. We invite you to visit our complex in Forest City, Iowa, for a firsthand look at the dedication and technology behind every motorhome we build.



# 34T

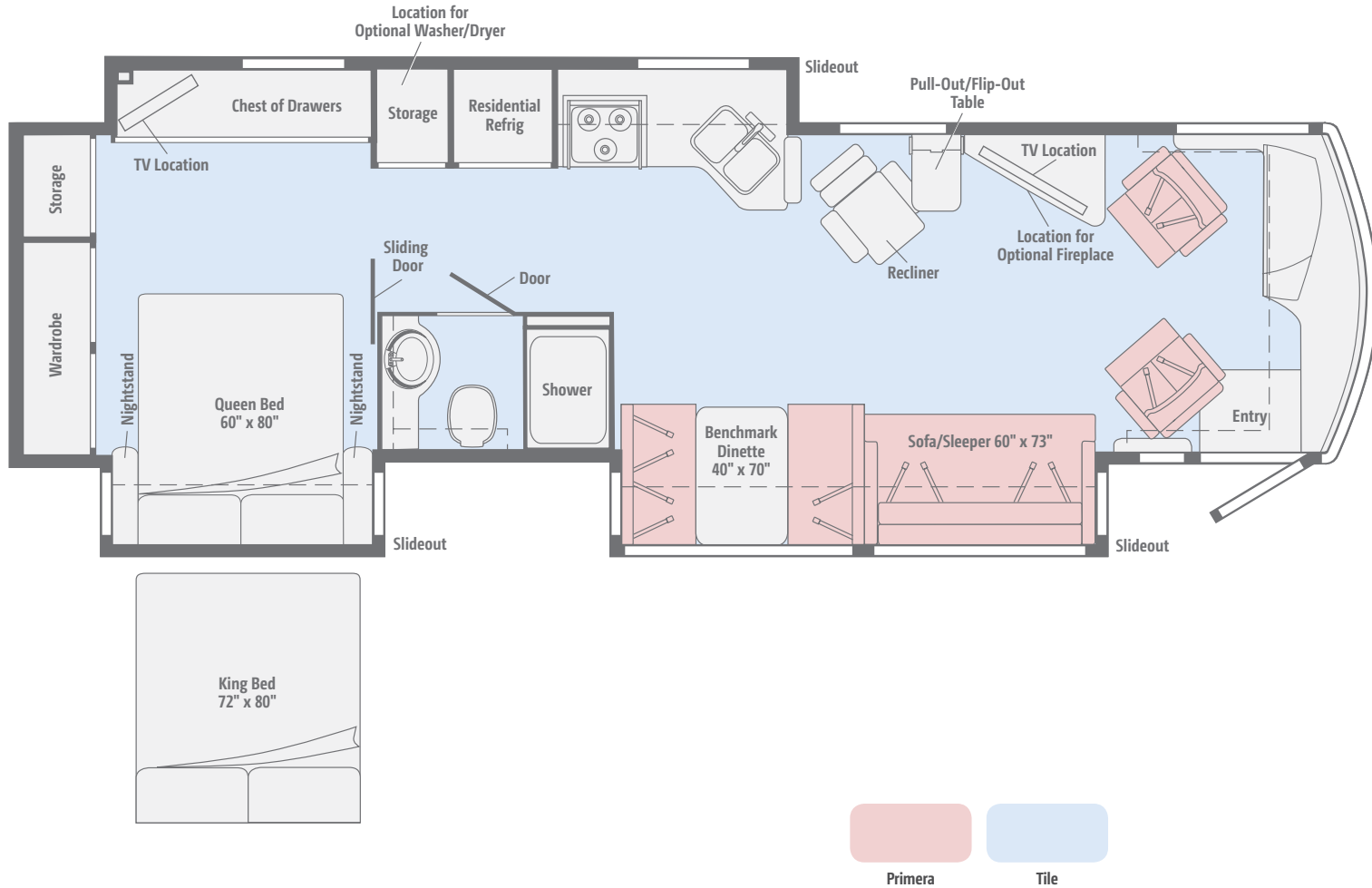
Experience the roominess of this dual-slideout with its inLounge™ sofa and movable inTable™, available fireplace, mid-coach bath, and spacious master bedroom.



Dimensions shown are for sleeping space only and may vary due to styling differences. Dashed lines denote overhead storage areas. Floorplans and specifications are also available online at [WinnebagoInd.com](http://WinnebagoInd.com).

## NEW 36G

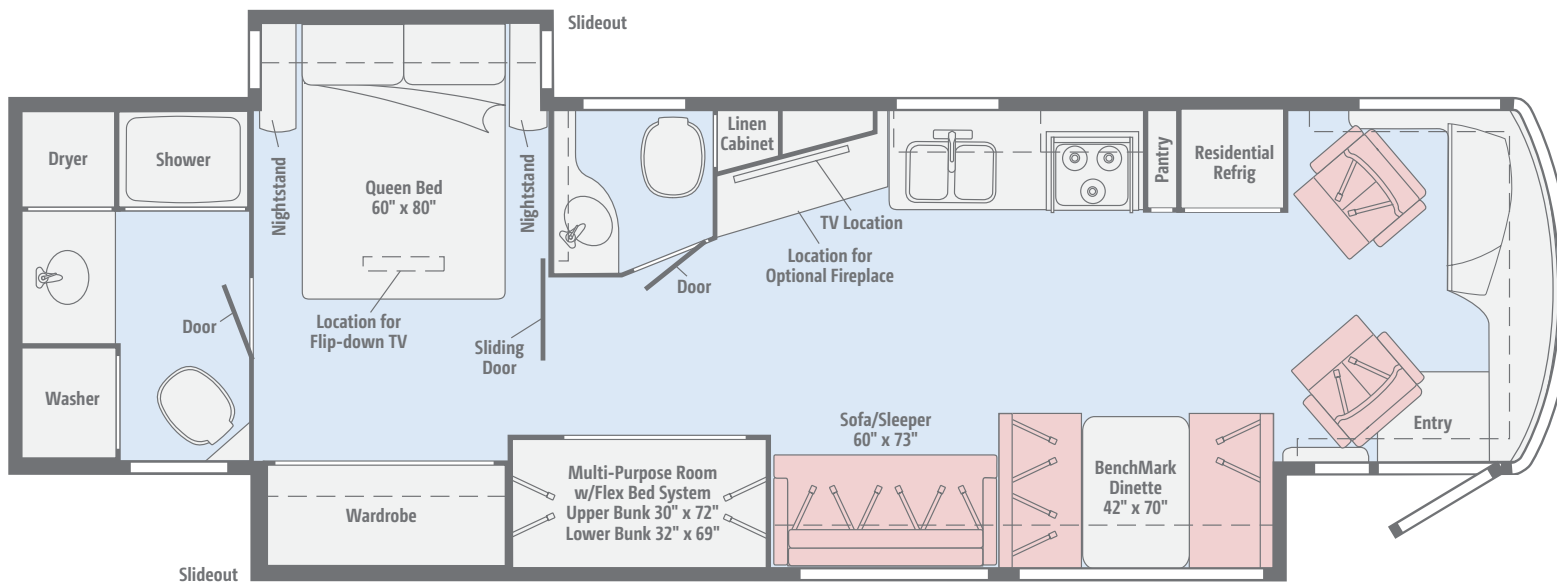
A Primera BenchMark dinette with a Dream Dinette table, recliner with pull-out table, and mid-coach bath are all standard features in this triple-slideout floorplan. The master bedroom comes with a wardrobe and chest of drawers for all your belongings.



Dimensions shown are for sleeping space only and may vary due to styling differences. Dashed lines denote overhead storage areas. Floorplans and specifications are also available online at [WinnebagoInd.com](http://WinnebagoInd.com).

# 38R

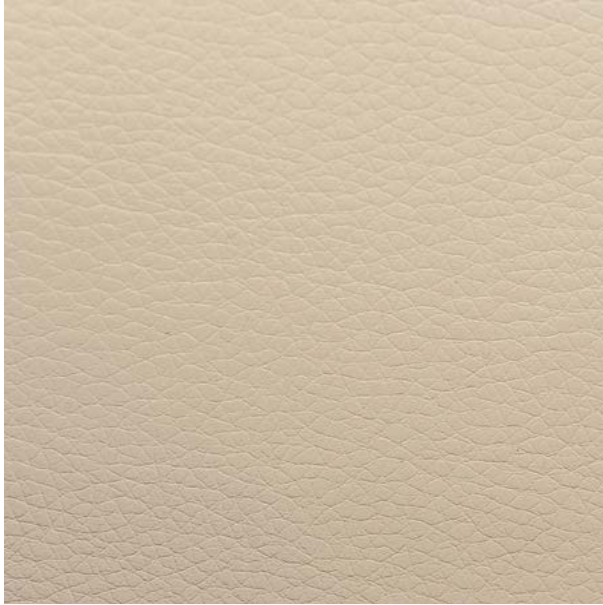
This dual-slideout features a forward galley, lounge HDTV and optional fireplace, Flex Bed System bunk beds, and dual bathrooms (mid-coach and master).



Dimensions shown are for sleeping space only and may vary due to styling differences. Dashed lines denote overhead storage areas. Floorplans and specifications are also available online at [WinnebagoInd.com](http://WinnebagoInd.com).

Choose from four fabric collections and three wood finishes.

## Arctic\*



Primera



Accent



Bedspread



Corian Countertop  
(Galley)



Wall Board



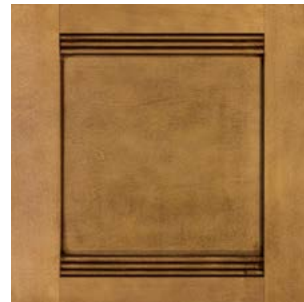
Vinyl Tile



Coffee-Glazed  
Honey Cherry



Coffee-Glazed  
Forest Cherry



Coffee-Glazed  
Vienna Maple

*Winnebago reserves the right to change décor materials and specifications without notice or obligation.*

*\*Not available after 2/23/15*

Choose from four fabric collections and three wood finishes.

## Fracture



Primera



Accent



Bedspread



Corian Countertop  
(Galley)



Wall Board



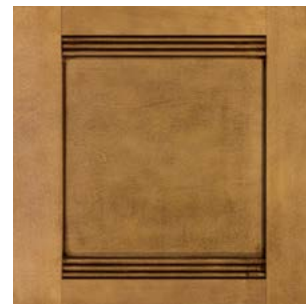
Vinyl Tile



Coffee-Glazed  
Honey Cherry



Coffee-Glazed  
Forest Cherry

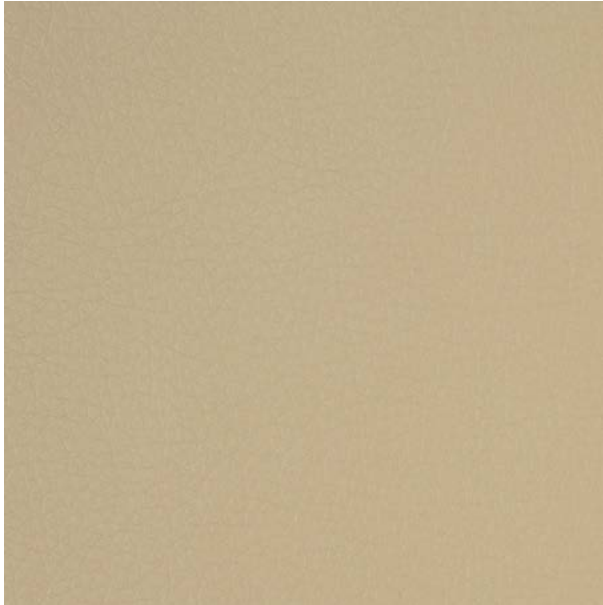


Coffee-Glazed  
Vienna Maple

*Winnebago reserves the right to change décor materials and specifications without notice or obligation.*

Choose from four fabric collections and three wood finishes.

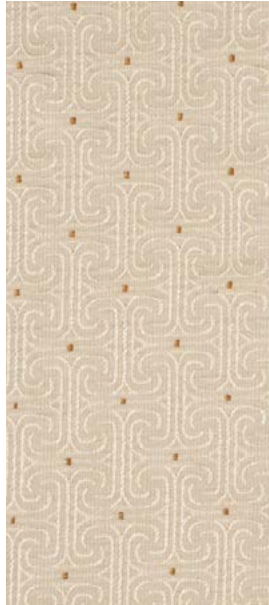
## Mountain View



Primera



Accent



Bedspread



Corian Countertop  
(Galley)



Wall Board



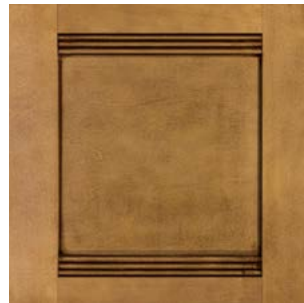
Vinyl Tile



Coffee-Glazed  
Honey Cherry



Coffee-Glazed  
Forest Cherry



Coffee-Glazed  
Vienna Maple

*Winnebago reserves the right to change décor materials and specifications without notice or obligation.*



Choose from four fabric collections and two wood finishes.

## Grayson\*\*



Ultraleather



Accent



Bedspread



Corian Countertop  
(Galley)



Wall Board



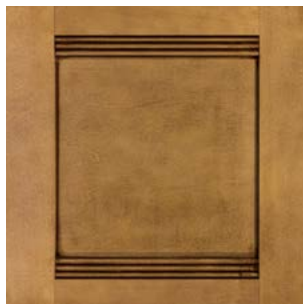
Carpet



Vinyl



Coffee-Glazed  
Honey Cherry



Coffee-Glazed  
Vienna Maple

*Winnebago reserves the right to change décor materials and specifications without notice or obligation.*

*\*\*Available after 2/23/15*

Choose from four stunning full-body paint options.



**Graystone**  
FULL-BODY PAINT



**Sandstone**  
FULL-BODY PAINT

Choose from four stunning full-body paint options.



**Wine**  
FULL-BODY PAINT



**Sedona Sand**  
FULL-BODY PAINT

## Weights & Measures

	34T	36G	38R
Length	35'6"	37'10"	39'10"
Exterior Height <sup>1</sup>	11'11"	11'11"	11'11"
Exterior Width <sup>2</sup>	8'5.5"	8'5.5"	8'5.5"
Exterior Storage <sup>3</sup> (cu. ft.)	153	222	228
Awning Length	17'	11'6"	20'
Interior Height	6'8"	6'8"	6'8"
Interior Width	8'0.5"	8'0.5"	8'0.5"
Freshwater Capacity w/Heater <sup>4</sup> (gal.)	84	84	84
Water Heater Capacity	10	10	10
Holding Tank Capacity - Black/Gray <sup>4</sup> (gal.)	48/54	48/54	44/54
LP Capacity <sup>5</sup> (gal.)	23	23	23
Fuel Capacity (gal.)	90	90	90
GCWR <sup>6</sup> (lbs.)	30,000	33,000	33,000
GVWR (lbs.)	26,000	27,910	27,910
GAWR - Front (lbs.)	10,410	10,410	10,410
GAWR - Rear (lbs.)	17,500	17,500	17,500
Wheelbase	208"	236"	260"

## Freightliner® XCS Chassis

340-hp Cummins® ISB 6.7L

Allison® 6-speed automatic 2100 MH transmission (34T)

Allison 6-speed automatic 2500 MH transmission (36G, 38R)

Information display center

NeWay® front and rear air suspension

160-amp. alternator

Air brakes w/ABS

Engine exhaust brake

Automatic hydraulic leveling jacks

7-pin trailer wiring

Trailer Hitch<sup>6</sup> 5,000-lb. drawbar/500-lb. maximum vertical tongue weight

Stainless steel wheel liners (34T)

Stylized aluminum wheels (36G, 38R)

## Cab Conveniences

Cab seats adjustable armrests, fixed lumbar support, and multi-adjustable recline

6-way power driver seat & passenger seat

3-point seat belts

Radio/Rearview Monitor System 6" LCD color touch screen, remote, iPod®/MP3 input, rear color camera

Cruise control

12-volt powerpoints

Powered MCD blackout roller visor/shade (front windshield)

MCD blackout roller shade (driver and passenger windows)

Chassis/house battery radio power switch

Power mirrors w/defrost and sideview camera

Power steering

Powered stepwell cover (NA 34T)

Map lights

TRW® tilt/telescopic steering column w/foot-actuated pedal

## OPTIONAL EQUIPMENT

+Lounge passenger cab seat w/footrest and flip-up workstation

SiriusXM™ (subscription not included), iPod® interface connector, receiver, remote

## Interior

48" HDTV (34T, 36G)

50" HDTV (38R)

USB/multi-outlet charging station w/surge protection (38R)

Home theater sound bar system

DVD player w/remote

Satellite system ready

Digital TV amplified antenna system

LED ceiling lights

MCD blackout roller shades

Soft vinyl ceiling

OnePlace® systems center

Tinted, dual-glazed, thermo-insulated coach windows

Powered ventilator fan (galley)

Powered roof vent(s) (bath)

Washer and dryer prep

## OPTIONAL EQUIPMENT

Washer and dryer

Electric fireplace

Powered StudioLoft™ w/privacy curtain (34T)

Winegard® Trav'ler® automatic HDTV satellite antenna

MCD solar/blackout roller shades

## Galley

Corian® countertops and decorative backsplash

2-door residential refrigerator/freezer w/icemaker

Microwave/convection oven w/range fan and touch control

3-burner range top w/storage below

Corian range and sink covers

## Bath

Laminate countertop

Flexible showerhead

Textured glass shower door

Skylight

Porcelain toilet

One-piece fiberglass shower surround

## Bedroom

28" HDTV (38R)

32" HDTV (34T)

40" HDTV (36G)

Queen bed w/innerspring mattress (w/storage below on 34T)

Bedspread and pillow shams

Headboard

## OPTIONAL EQUIPMENT

Queen Ideal Rest® Nouveau digital comfort control mattress (w/storage below)

King Ideal Rest Nouveau digital comfort control mattress (36G)

## Exterior

Powered patio awning w/LED lighting

2nd powered patio awning w/LED lighting (34T)

Exterior compartment 110-volt duplex, TV antenna, and 3-way A/V receptacles

KeyOne® lock system

Porch light (36G, 38R)

Powered entrance awning (36G, 38R)

Lighted storage compartments

Automatic entrance steps

Lower front protective mask

Premium high-gloss sidewall skin

### OPTIONAL EQUIPMENT

Exterior entertainment center w/32" HDTV

## Heating & Cooling System

2-13,500 BTU air conditioners (1 A/C, 1 A/C w/heat pump) (34T)

2-15,000 BTU air conditioners (1 A/C, 1 A/C w/heat pump) (36G, 38R)

35,000 BTU ducted furnace (34T)

40,000 BTU ducted furnace (36G, 38R)

## Electrical System

Service Center cable TV input, 50-amp. power cord, shoreline/generator automatic changeover switch, portable satellite hookup

2,000-watt inverter/charger w/remotely panel with coach battery disconnect switch

6,000-watt Cummins Onan® Quiet Diesel™ generator

Auxiliary start circuit

AC/DC electrical distribution system

4 deep-cycle Group 31 marine/RV batteries

Battery disconnect system (coach and chassis)

PowerLine® Energy Management System

Automatic dual-battery charge control

Automatic generator start system

## Plumbing System

Service Center pressurized city water hookup w/diverter fill, freshwater drain, drainage valves, exterior wash station w/pump switch, holding tank flushing system, 20' sewer hose

On-demand water pump

10-gallon LP 110-volt electric water heater w/electric ignition

TrueLevel™ holding tank monitoring system

Full-coach water filtration system

Permanent-mount LP tank w/gauge

Heated holding tank compartment

## Safety

LP, smoke, and carbon monoxide detectors

10 BC fire extinguisher

Ground fault interrupter

High-mount brake lamps

Daytime running lamps

## Warranty<sup>7</sup>

12-month/15,000-mile basic limited warranty<sup>8</sup>

36-month/36,000-mile limited warranty on structure<sup>8</sup>

10-year limited parts-and-labor warranty on roof skin<sup>8</sup>

### FOOTNOTES

- 1 The height of each model is measured to the top of the tallest standard feature and is based on the curb weight of a typically equipped unit. The actual height of your vehicle may vary by several inches depending on chassis or equipment variations. Please contact your dealer for further information.
- 2 Floorplans feature a wide-body design - over 96." In making your purchase decision, you should be aware that some states restrict access on some or all state roads to 96" in body-width. Before making your purchase decision, you should confirm the road usage laws that interest you.
- 3 The load capacity of your motorhome is designated by weight, not by volume, so you cannot necessarily use all available space when loading your motorhome.
- 4 Capacities are based on measurements prior to tank installation. Slight capacity variations can result due to installation applications.
- 5 Capacities shown are tank manufacturer's listed water capacity (WC). Actual filled LP capacity is 80% of listing due to overfilling prevention on tank.
- 6 Actual towing capacity is dependent on your particular loading and towing circumstances which includes the GVWR, GAWR, and GCWR, as well as adequate trailer brakes. Please refer to the Operator's Manual of your vehicle for further towing information.
- 7 See separate chassis warranty.
- 8 See your dealer for complete warranty information.

Winnebago's continuing program of product improvement makes specifications, equipment, model availability, and prices subject to change without notice. Published content reflects the most current product information at time of printing. Please consult your dealer for individual vehicle features and specifications.



Let us host your next

# Adventure

Over 20 Tours in 2015



WGOAdventures.com



Show your Winnebago love with high-quality gifts and wearables.



Apparel | Gifts | Parts | Gear

WinnebagoOutdoor.com

Find your style



Connect with Winnebago (Click one of the following)



Like us



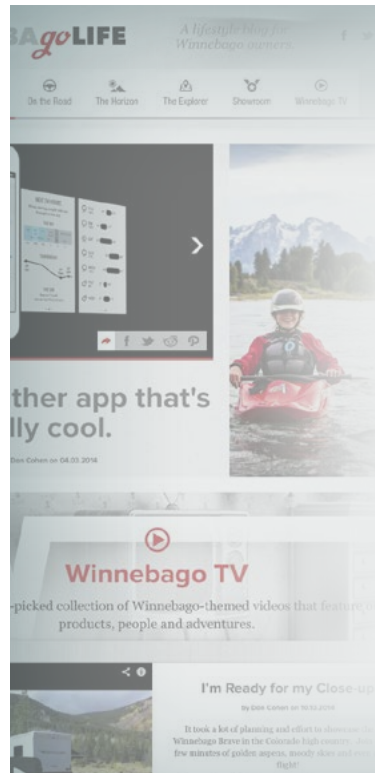
Follow us



Watch now

## WinnebagoInd.com Has All The Answers

Visit WinnebagoInd.com on your computer, smartphone, or tablet for the latest product information and updates.



## Welcome to GoLife!

Visit our lifestyle blog for motorhome news, personal travelogues, and community stories.

WinnebagoLife.com



mywinnebago.com

WINNEBAGO HAS A STORY AND WHAT A STORY IT IS!

## Looking Back

Take a Drive Down Memory Lane  
Our history begins in the heartland of Forest City, Iowa and here we have a rich history of high quality, reliable, and lasting motorhomes. We're proud of our long history and the high quality, reliable, and lasting motorhomes we've produced over the years.

Tell us your story

The story of Winnebago is about the people who have made it what it is today. We want to hear from you! Write your story, and we'll feature it in our magazine. All story submissions will receive a complimentary 24-hour roadside assistance. If your story is selected, we'll send you a Winnebago 24-hour roadside assistance kit. Send us your story today!

write your STORY READ ALL ABOUT IT

## Join the Crew

Show Your Pride  
We're looking for a few good men and women who love to travel and want to be part of the crew. If you love Winnebago motorhomes and want to be part of the crew, you're invited to show your pride by submitting your name and photo to become part of the crew.

## See How Far We've Come

MOVE THE SLIDER TO SEE THE EVOLUTION

## Then & Now

The Crew is Back  
It's time to get back on the road. We're looking for a few good men and women who love to travel and want to be part of the crew. If you love Winnebago motorhomes and want to be part of the crew, you're invited to show your pride by submitting your name and photo to become part of the crew.

SEE TRIBUTE SEE BRAVE

## Ads from the Archives

SEE THE HISTORY OF WINNEBAGO

**VISIT:**  
MyWinnebagoStory.com

# PREFERRED CARE PROGRAM

We back our motorhomes with best-in-class support both before and after the sale:

- 12-month/15,000-mile basic limited warranty
- 36-month/36,000-mile limited warranty on structure
- 10-year limited parts-and-labor warranty on roof skin
- Complimentary 24-hour roadside assistance program

**24 HOUR**  
**TRIP SAVER**  
FAST TRACK PARTS  
**WINNEBAGO**

TripSaver® Fast Track Parts guarantees that in-stock warranty parts ship directly to your dealer within 24 hours

- National dealer service network

For more information, visit us at [WGOService.com](http://WGOService.com)

**24/7**  
**WINNEBAGO**  
ROADSIDE ASSISTANCE

**WINNEBAGO**  
RV INSURANCE

From RV to personal insurance, Winnebago RV Insurance can provide all the coverage and services you need to feel at home on the road.

Call us at: (800) 642-4892

# WIT CLUB

## Join the Club, Join the Fun

Here's the perfect way to begin your life on the road as the owner of a new Winnebago – by joining the exclusive WIT Club. Start your adventure with other fun-loving WIT Club members from across the country and get the most out of your new Winnebago motorhome.

Members enjoy:

- Caravans and rallies
- Newsletters
- Local and state group activities
- RV travel benefits

See more at [WITclub.com](http://WITclub.com)

**WIT CLUB**  
"DOWN UNDER"

## Grand National Rally

G'day mates! Explore the outback at this year's "Down Under" Grand National Rally. Each year, thousands of Winnebago owners descend upon the land down under – a.k.a. Forest City, Iowa.

Rally-goers enjoy an unforgettable week reconnecting with friends, taking tours, participating in activities, and more. Hop on down and join the adventure this July!

©2015 Winnebago  
Seat belts are your most important hookup. Always buckle up.